

# NOBLE ENERGY, INC

Location: COLORADO Slot: SLOT#04 Guttersen Y12-754 (610'FSL & 2271'FEL,SEC.12)  
 Field: WELD COUNTY (NOBLE NAD 83 GRID) Well: Guttersen Y12-754  
 Facility: SEC.12-T02N-R64W Wellbore: Guttersen Y12-754 PWB

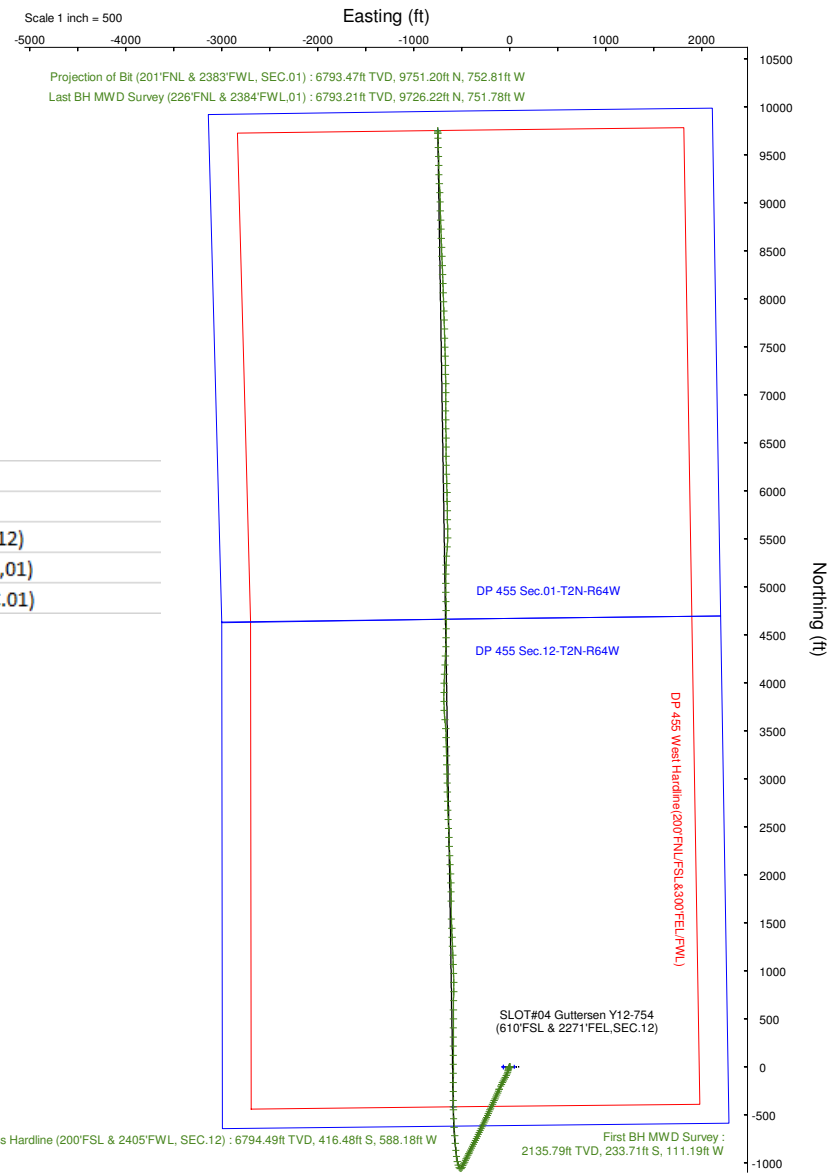
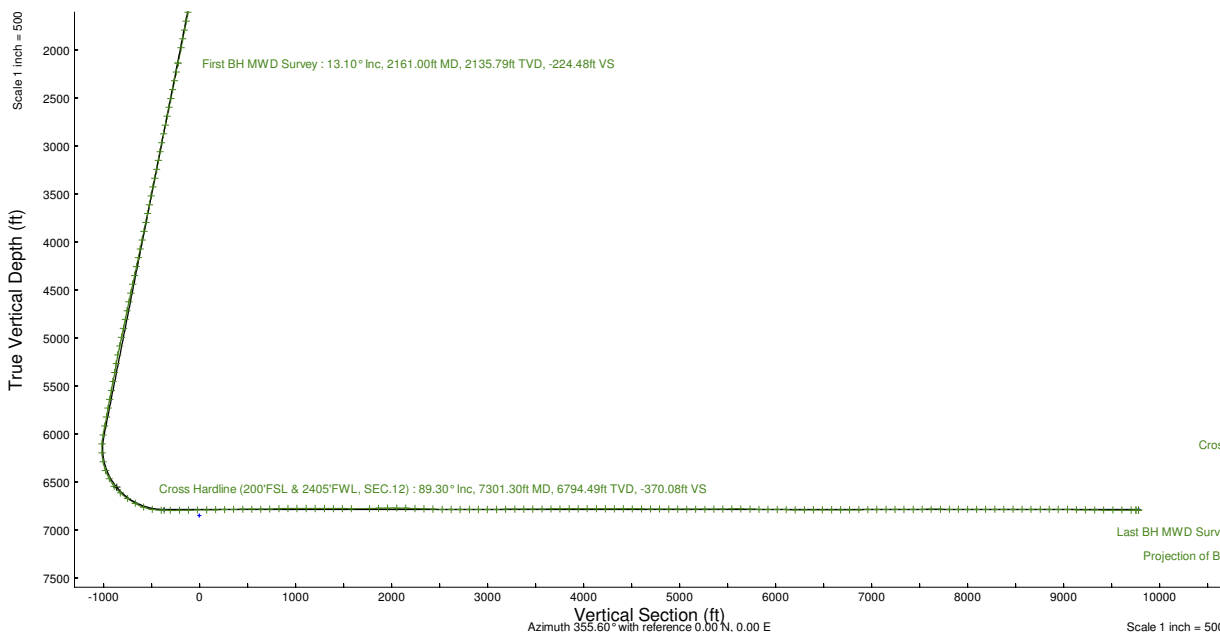
Plot reference wellpath is Guttersen Y12-754 (REV-C.0) PWP  
 True vertical depths are referenced to RIG (4864'GL+30'KB@4894'RKB) (RKB)  
 Reference wellpath measured depths are referenced to RIG (4864'GL+30'KB@4894'RKB) (RKB)  
 RIG (4864'GL+30'KB@4894'RKB) (RKB) to Mean Sea Level: 4894 feet  
 Mean Sea Level to Ground level (At Slot: SLOT#04 Guttersen Y12-754 (610'FSL & 2271'FEL,SEC.12)): 0 feet  
 Offset wellpath MDs are referenced to each path's default MD datum  
 Grid System: NAD83 / Lambert Colorado SP, Northern Zone (501), US feet  
 North Reference: Grid north  
 Scale: True distance  
 Coordinates are in feet referenced to Slot  
 Depths are in feet  
 Created by: robiale01 on 2024-06-13; Database: WA\_Denver

## Location Information

Facility Name				
SEC.12-T02N-R64W				
Slot		Local N (ft)	Local E (ft)	
SLOT#04 Guttersen Y12-754 (610'FSL & 2271'FEL,SEC.12)		0.40	67.37	
RIG (4864'GL+30'KB@4894'RKB) (RKB) to Ground level (At Slot: SLOT#04 Guttersen Y12-754 (610'FSL & 2271'FEL,SEC.12))		Grid East (US ft)	Grid North (US ft)	Latitude
		3279678.757	1298091.404	40°08'50.3448"N
Mean Sea Level to Ground level (At Slot: SLOT#04 Guttersen Y12-754 (610'FSL & 2271'FEL,SEC.12))		Grid East (US ft)	Grid North (US ft)	Latitude
		3279946.128	1298091.801	40°08'50.3412"N
RIG (4864'GL+30'KB@4894'RKB) (RKB) to Mean Sea Level				Longitude
				104°29'55.6692"W
				Longitude
				104°29'54.8016"W
				4894ft
				0ft
				4894ft



MD (ft)	INC (deg)	AZ (deg)	TVD (ft)	Local N (ft)	Local E (ft)	Comment
2161	13.1	204.94	2135.79	-233.71	-111.19	First BH MWD Survey
7301.3	89.3	359.349	6794.49	-416.48	-588.18	Cross Hardline (200'FSL & 2405'FWL, SEC.12)
17450	89.41	357.63	6793.21	9726.22	-751.78	Last BH MWD Survey (226'FNL & 2384'FWL,01)
17475	89.41	357.63	6793.47	9751.2	-752.81	Projection of Bit (201'FNL & 2383'FWL, SEC.01)



REFERENCE WELLPATH IDENTIFICATION			
Operator	NOBLE ENERGY, INC	Well	Guttersen Y12-754
Field	WELD COUNTY (NOBLE NAD 83 GRID)	API/Legal	
Facility	SEC.12-T02N-R64W	Wellbore	Guttersen Y12-754 AWB
Slot	SLOT#04 Guttersen Y12-754 (610'FSL & 2271'FEL,SEC.12)		

REPORT SETUP INFORMATION			
Projection System	NAD83 / Lambert Colorado SP, Northern Zone (501), US feet	Software System	WellArchitect® 6.0
North Reference	Grid	User	Robiale01
Scale	0.999958	Report Generated	6/12/2024 at 3:30:00 PM
Convergence at slot	0.65° East	Database	WA_Denver

WELLPATH LOCATION						
	Local coordinates		Grid coordinates		Geographic coordinates	
	North[ft]	East[ft]	Easting[US ft]	Northing[US ft]	Latitude	Longitude
Slot Location	0.40	67.37	3279946.13	1298091.80	40.1473170°	-104.4985560°
Facility Reference Pt			3279878.76	1298091.40	40.1473180°	-104.4987970°
Field Reference Pt			3000000.00	4454105.15	48.7761986°	-105.5000000°

WELLPATH DATUM			
Calculation method	Minimum curvature	RIG (4864'GL+30'KB@4894'RKB) (RKB) to Facility Vertical Datum	4894.00ft
Horizontal Reference Pt	Slot	RIG (4864'GL+30'KB@4894'RKB) (RKB) to Mean Sea Level	4894.00ft
Vertical Reference Pt	RIG (4864'GL+30'KB@4894'RKB) (RKB)	RIG (4864'GL+30'KB@4894'RKB) (RKB) to Ground Level at Slot (SLOT#04 Guttersen Y12-754 (610'FSL & 2271'FEL,SEC.12))	4894.00ft
MD Reference Pt	RIG (4864'GL+30'KB@4894'RKB) (RKB)	Section Origin	N 0.00, E 0.00 ft
Field Vertical Reference	Mean Sea Level	Section Azimuth	355.60°

REFERENCE WELLPATH IDENTIFICATION			
Operator	NOBLE ENERGY, INC	Well	Guttersen Y12-754
Field	WELD COUNTY (NOBLE NAD 83 GRID)	API/Legal	
Facility	SEC.12-T02N-R64W	Wellbore	Guttersen Y12-754 AWB
Slot	SLOT#04 Guttersen Y12-754 (610'FSL & 2271'FEL,SEC.12)		

WELLPATH DATA (186 stations) † = interpolated, ‡ = extrapolated station										
MD [ft]	Inclination [°]	Azimuth [°]	TVD [ft]	Vert Sect [ft]	North [ft]	East [ft]	Latitude	Longitude	DLS [°/100ft]	Comments
0.00†	0.000	288.410	0.00	0.00	0.00	0.00	40.1473170	-104.4985560	0.00	
30.00	0.000	288.410	30.00	0.00	0.00	0.00	40.1473170	-104.4985560	0.00	
203.00	0.260	288.410	203.00	0.15	0.12	-0.37	40.1473174	-104.4985573	0.15	
294.00	0.530	261.690	294.00	0.20	0.13	-0.98	40.1473174	-104.4985595	0.35	
389.00	0.440	264.150	388.99	0.16	0.03	-1.78	40.1473171	-104.4985624	0.10	
484.00	0.620	278.740	483.99	0.27	0.07	-2.65	40.1473173	-104.4985655	0.24	
578.00	0.790	269.420	577.98	0.43	0.14	-3.80	40.1473175	-104.4985696	0.22	
673.00	2.020	227.940	672.95	-0.55	-0.99	-5.70	40.1473145	-104.4985764	1.60	
767.00	3.170	208.600	766.86	-3.74	-4.38	-8.18	40.1473052	-104.4985854	1.52	
862.00	4.920	206.140	861.62	-9.45	-10.34	-11.23	40.1472890	-104.4985966	1.85	
957.00	6.160	198.230	956.17	-17.67	-18.84	-14.62	40.1472657	-104.4986090	1.53	
1051.00	6.330	193.310	1049.62	-27.26	-28.68	-17.39	40.1472388	-104.4986194	0.60	
1146.00	8.350	191.900	1143.83	-38.87	-40.52	-20.02	40.1472064	-104.4986292	2.13	
1241.00	10.110	196.650	1237.60	-53.27	-55.26	-23.83	40.1471660	-104.4986435	2.02	
1335.00	11.700	202.450	1329.90	-69.47	-71.98	-29.83	40.1471204	-104.4986656	2.05	
1430.00	12.310	208.780	1422.83	-86.54	-89.76	-38.39	40.1470718	-104.4986969	1.53	
1525.00	12.930	209.300	1515.53	-103.86	-107.90	-48.46	40.1470223	-104.4987337	0.66	
1619.00	12.570	208.250	1607.22	-121.22	-126.08	-58.45	40.1469727	-104.4987702	0.46	
1714.00	12.930	207.550	1699.87	-138.94	-144.61	-68.26	40.1469222	-104.4988060	0.41	
1809.00	12.840	207.020	1792.48	-156.97	-163.44	-77.97	40.1468708	-104.4988415	0.16	
1903.00	12.310	205.790	1884.23	-174.54	-181.77	-87.08	40.1468208	-104.4988748	0.63	
1998.00	12.840	204.560	1976.95	-192.53	-200.49	-95.87	40.1467697	-104.4989070	0.63	
2161.00	13.100	204.940	2135.79	-224.48	-233.71	-111.19	40.1466789	-104.4989631	0.17	First BH MWD Survey
2256.00	13.090	203.990	2228.32	-243.33	-253.30	-120.10	40.1466254	-104.4989958	0.23	
2350.00	13.050	203.820	2319.88	-262.04	-272.74	-128.72	40.1465724	-104.4990274	0.06	
2445.00	13.090	204.990	2412.42	-280.87	-292.30	-137.59	40.1465190	-104.4990599	0.28	
2540.00	13.050	204.900	2504.96	-299.59	-311.78	-146.65	40.1464658	-104.4990931	0.05	
2634.00	13.140	204.270	2596.52	-318.22	-331.14	-155.51	40.1464129	-104.4991256	0.18	
2729.00	13.050	203.910	2689.05	-337.14	-350.79	-164.30	40.1463592	-104.4991578	0.13	
2824.00	12.600	204.570	2781.68	-355.65	-370.02	-172.96	40.1463067	-104.4991896	0.50	
2918.00	14.460	204.510	2873.06	-374.89	-390.03	-182.09	40.1462521	-104.4992230	1.98	
3013.00	11.830	203.720	2965.57	-393.86	-409.74	-190.93	40.1461983	-104.4992555	2.77	
3108.00	12.890	203.900	3058.36	-411.78	-428.34	-199.14	40.1461474	-104.4992856	1.12	
3202.00	12.540	205.070	3150.06	-429.90	-447.17	-207.71	40.1460960	-104.4993170	0.46	
3297.00	12.360	204.600	3242.82	-447.77	-465.76	-216.31	40.1460453	-104.4993485	0.22	
3392.00	13.300	204.360	3335.45	-466.24	-484.96	-225.05	40.1459928	-104.4993805	0.99	
3486.00	13.730	204.480	3426.85	-485.48	-504.96	-234.13	40.1459382	-104.4994138	0.46	
3581.00	13.190	204.650	3519.24	-504.83	-525.07	-243.33	40.1458833	-104.4994475	0.57	
3676.00	11.870	204.520	3611.97	-522.86	-543.81	-251.90	40.1458321	-104.4994790	1.39	
3771.00	13.860	204.930	3704.58	-541.33	-563.02	-260.75	40.1457797	-104.4995114	2.10	
3865.00	12.730	206.530	3796.06	-560.03	-582.50	-270.13	40.1457265	-104.4995457	1.26	
3960.00	13.930	205.890	3888.50	-578.88	-602.15	-279.79	40.1456729	-104.4995811	1.27	
4055.00	13.850	205.780	3980.72	-598.58	-622.68	-289.73	40.1456168	-104.4996174	0.09	
4149.00	13.860	206.330	4071.99	-617.99	-642.90	-299.62	40.1455616	-104.4996536	0.14	
4244.00	13.920	205.420	4164.21	-637.68	-663.42	-309.57	40.1455056	-104.4996901	0.24	

REFERENCE WELLPATH IDENTIFICATION			
Operator	NOBLE ENERGY, INC	Well	Guttersen Y12-754
Field	WELD COUNTY (NOBLE NAD 83 GRID)	API/Legal	
Facility	SEC.12-T02N-R64W	Wellbore	Guttersen Y12-754 AWB
Slot	SLOT#04 Guttersen Y12-754 (610'FSL & 2271'FEL,SEC.12)		

WELLPATH DATA (186 stations) † = interpolated, ‡ = extrapolated station										
MD [ft]	Inclination [°]	Azimuth [°]	TVD [ft]	Vert Sect [ft]	North [ft]	East [ft]	Latitude	Longitude	DLS [°/100ft]	Comments
4339.00	13.920	206.640	4256.42	-657.39	-683.95	-319.60	40.1454496	-104.4997267	0.31	
4434.00	13.790	206.390	4348.66	-676.90	-704.31	-329.76	40.1453940	-104.4997639	0.15	
4528.00	14.010	206.070	4439.90	-696.33	-724.56	-339.74	40.1453387	-104.4998004	0.25	
4623.00	13.800	206.310	4532.12	-715.98	-745.05	-349.81	40.1452828	-104.4998373	0.23	
4718.00	13.770	206.530	4624.38	-735.42	-765.32	-359.88	40.1452275	-104.4998741	0.06	
4812.00	13.690	206.310	4715.70	-754.58	-785.30	-369.81	40.1451729	-104.4999104	0.10	
4907.00	13.510	206.560	4808.03	-773.76	-805.30	-379.76	40.1451183	-104.4999468	0.20	
5002.00	13.840	206.480	4900.34	-793.03	-825.40	-389.78	40.1450635	-104.4999835	0.35	
5096.00	13.790	206.240	4991.62	-812.31	-845.51	-399.75	40.1450086	-104.5000199	0.08	
5191.00	13.890	206.230	5083.86	-831.87	-865.90	-409.80	40.1449529	-104.5000567	0.11	
5286.00	13.640	205.940	5176.14	-851.35	-886.20	-419.74	40.1448975	-104.5000931	0.27	
5380.00	10.660	206.230	5268.02	-868.40	-903.97	-428.43	40.1448490	-104.5001249	3.17	
5475.00	12.160	206.430	5361.14	-884.55	-920.81	-436.77	40.1448030	-104.5001554	1.58	
5569.00	12.200	206.660	5453.02	-901.56	-938.55	-445.63	40.1447546	-104.5001878	0.07	
5664.00	12.070	206.020	5545.90	-918.72	-956.45	-454.49	40.1447058	-104.5002202	0.20	
5759.00	12.170	206.330	5638.78	-935.89	-974.35	-463.29	40.1446569	-104.5002524	0.13	
5853.00	12.060	206.360	5730.69	-952.85	-992.03	-472.04	40.1446087	-104.5002844	0.12	
5948.00	12.100	206.230	5823.59	-969.94	-1009.85	-480.85	40.1445600	-104.5003166	0.05	
6043.00	12.090	206.190	5916.48	-987.07	-1027.71	-489.64	40.1445113	-104.5003488	0.01	
6137.00	12.390	207.570	6008.34	-1004.10	-1045.49	-498.65	40.1444627	-104.5003818	0.45	
6232.00	7.390	234.790	6101.95	-1015.89	-1058.06	-508.37	40.1444285	-104.5004170	7.07	
6326.00	7.110	300.170	6195.34	-1015.68	-1058.62	-518.36	40.1444273	-104.5004528	8.32	
6421.00	11.340	327.160	6289.13	-1004.12	-1047.81	-528.52	40.1444573	-104.5004886	6.26	
6516.00	20.540	343.420	6380.42	-979.55	-1023.93	-538.36	40.1445232	-104.5005229	10.67	
6610.00	29.100	346.650	6465.67	-940.78	-985.81	-548.36	40.1446281	-104.5005571	9.22	
6705.00	37.660	354.140	6544.95	-888.83	-934.34	-556.68	40.1447696	-104.5005848	9.99	
6799.00	47.890	355.100	6613.86	-825.09	-870.87	-562.61	40.1449440	-104.5006034	10.90	
6894.00	55.890	355.790	6672.45	-750.40	-796.42	-568.51	40.1451486	-104.5006216	8.44	
6988.00	60.210	354.550	6722.18	-670.66	-716.96	-575.25	40.1453669	-104.5006425	4.73	
7083.00	70.380	356.530	6761.83	-584.48	-631.03	-581.89	40.1456029	-104.5006627	10.87	
7177.00	80.450	358.200	6785.48	-493.67	-540.28	-586.04	40.1458522	-104.5006739	10.85	
7272.00	89.140	359.540	6794.09	-399.31	-445.78	-587.89	40.1461116	-104.5006767	9.25	
7301.30†	89.300	359.349	6794.49	-370.08	-416.48	-588.18	40.1461920	-104.5006766	0.85	Cross Hardline (200'FSL & 2405'FWL, SEC.12)
7367.00	89.660	358.920	6795.08	-304.51	-350.79	-589.17	40.1463724	-104.5006775	0.85	
7461.00	90.710	359.800	6794.78	-210.71	-256.80	-590.22	40.1466304	-104.5006775	1.46	
7556.00	91.200	0.210	6793.19	-116.01	-161.82	-590.21	40.1468911	-104.5006736	0.67	
7651.00	91.630	0.720	6790.85	-21.38	-66.85	-589.44	40.1471518	-104.5006670	0.70	
7745.00	90.220	359.160	6789.33	72.33	27.13	-589.54	40.1474097	-104.5006636	2.24	
7840.00	90.740	0.520	6788.54	167.06	122.13	-589.80	40.1476705	-104.5006607	1.53	
7934.00	90.620	0.060	6787.42	260.74	216.12	-589.33	40.1479285	-104.5006552	0.51	
8029.00	91.320	359.880	6785.81	355.45	311.11	-589.38	40.1481892	-104.5006516	0.76	
8124.00	90.150	0.510	6784.59	450.13	406.09	-589.05	40.1484499	-104.5006466	1.40	
8218.00	89.660	359.640	6784.75	543.85	500.09	-588.93	40.1487079	-104.5006423	1.06	
8313.00	91.260	0.570	6783.99	638.55	595.09	-588.76	40.1489687	-104.5006379	1.95	
8407.00	91.020	1.200	6782.12	732.13	689.06	-587.31	40.1492265	-104.5006289	0.72	

REFERENCE WELLPATH IDENTIFICATION			
Operator	NOBLE ENERGY, INC	Well	Guttersen Y12-754
Field	WELD COUNTY (NOBLE NAD 83 GRID)	API/Legal	
Facility	SEC.12-T02N-R64W	Wellbore	Guttersen Y12-754 AWB
Slot	SLOT#04 Guttersen Y12-754 (610'FSL & 2271'FEL,SEC.12)		

WELLPATH DATA (186 stations)										
MD [ft]	Inclination [°]	Azimuth [°]	TVD [ft]	Vert Sect [ft]	North [ft]	East [ft]	Latitude	Longitude	DLS [°/100ft]	Comments
8502.00	92.680	1.710	6779.05	826.58	783.97	-584.89	40.1494870	-104.5006165	1.83	
8597.00	90.030	359.130	6776.80	921.20	878.93	-584.20	40.1497476	-104.5006101	3.89	
8691.00	90.180	357.510	6776.63	1015.09	972.88	-586.96	40.1500056	-104.5006162	1.73	
8786.00	90.180	358.260	6776.33	1110.01	1067.82	-590.46	40.1502663	-104.5006249	0.79	
8881.00	89.820	357.470	6776.33	1204.94	1162.75	-594.00	40.1505270	-104.5006338	0.91	
8975.00	89.820	357.600	6776.63	1298.88	1256.66	-598.04	40.1507849	-104.5006444	0.14	
9070.00	89.230	357.750	6777.41	1393.81	1351.58	-601.90	40.1510455	-104.5006544	0.64	
9164.00	90.060	357.790	6778.00	1487.74	1445.51	-605.55	40.1513034	-104.5006637	0.88	
9258.00	89.200	357.800	6778.60	1581.67	1539.43	-609.17	40.1515614	-104.5006728	0.91	
9447.00	91.390	0.120	6777.63	1770.32	1728.38	-612.60	40.1520801	-104.5006775	1.69	
9542.00	92.620	359.360	6774.31	1865.01	1823.31	-613.03	40.1523407	-104.5006752	1.52	
9636.00	90.460	357.860	6771.78	1958.84	1917.24	-615.31	40.1525986	-104.5006796	2.80	
9731.00	89.660	357.930	6771.68	2053.76	2012.18	-618.80	40.1528593	-104.5006882	0.85	
9825.00	88.000	357.480	6773.60	2147.67	2106.08	-622.56	40.1531171	-104.5006979	1.83	
9920.00	87.970	357.330	6776.94	2242.57	2200.92	-626.86	40.1533776	-104.5007095	0.16	
10015.00	88.120	357.600	6780.18	2337.46	2295.78	-631.06	40.1536381	-104.5007207	0.32	
10109.00	87.750	357.060	6783.57	2431.36	2389.61	-635.44	40.1538958	-104.5007325	0.70	
10204.00	88.550	358.020	6786.64	2526.25	2484.47	-639.51	40.1541563	-104.5007433	1.31	
10298.00	91.020	358.250	6786.99	2620.15	2578.42	-642.57	40.1544142	-104.5007504	2.64	
10393.00	89.970	357.520	6786.17	2715.07	2673.35	-646.08	40.1546749	-104.5007591	1.35	
10487.00	89.970	358.590	6786.22	2808.98	2767.29	-649.27	40.1549329	-104.5007668	1.14	
10582.00	90.090	358.640	6786.17	2903.85	2862.26	-651.56	40.1551936	-104.5007712	0.14	
10677.00	90.150	358.820	6785.97	2998.71	2957.24	-653.67	40.1554544	-104.5007749	0.20	
10771.00	89.940	358.360	6785.89	3092.58	3051.21	-655.98	40.1557124	-104.5007793	0.54	
10866.00	91.760	359.480	6784.49	3187.40	3146.18	-657.77	40.1559731	-104.5007819	2.25	
10961.00	89.940	358.550	6783.08	3282.22	3241.15	-659.41	40.1562339	-104.5007839	2.15	
11055.00	90.090	358.050	6783.05	3376.11	3335.11	-662.20	40.1564918	-104.5007901	0.56	
11150.00	90.520	359.160	6782.55	3470.98	3430.08	-664.51	40.1567526	-104.5007946	1.25	
11245.00	90.250	355.730	6781.91	3565.91	3524.96	-668.74	40.1570132	-104.5008059	3.62	
11339.00	90.250	353.930	6781.50	3659.90	3618.58	-677.21	40.1572704	-104.5008324	1.91	
11434.00	90.490	357.480	6780.88	3754.88	3713.29	-684.33	40.1575306	-104.5008540	3.75	
11529.00	90.340	359.470	6780.20	3849.76	3808.25	-686.85	40.1577913	-104.5008593	2.10	
11623.00	90.520	0.820	6779.49	3943.45	3902.25	-686.62	40.1580493	-104.5008546	1.45	
11718.00	90.120	1.520	6778.96	4038.00	3997.22	-684.68	40.1583100	-104.5008439	0.85	
11813.00	90.000	3.120	6778.86	4132.35	4092.14	-680.83	40.1585704	-104.5008263	1.69	
11908.00	89.260	2.890	6779.47	4226.55	4187.01	-675.85	40.1588306	-104.5008046	0.82	
12002.00	89.780	2.430	6780.26	4319.83	4280.91	-671.49	40.1590882	-104.5007852	0.74	
12097.00	89.910	2.590	6780.52	4414.14	4375.81	-667.33	40.1593486	-104.5007665	0.22	
12191.00	89.570	1.150	6780.94	4507.57	4469.76	-664.26	40.1596064	-104.5007518	1.57	
12286.00	89.720	0.320	6781.53	4602.19	4564.75	-663.04	40.1598671	-104.5007436	0.89	
12381.00	89.820	359.370	6781.91	4696.93	4659.75	-663.30	40.1601278	-104.5007407	1.01	
12475.00	89.480	358.970	6782.49	4790.74	4753.74	-664.66	40.1603858	-104.5007418	0.56	
12570.00	89.480	358.900	6783.35	4885.58	4848.72	-666.43	40.1606466	-104.5007442	0.07	
12665.00	89.910	359.520	6783.86	4980.39	4943.70	-667.74	40.1609074	-104.5007451	0.79	
12759.00	89.820	0.070	6784.08	5074.13	5037.70	-668.07	40.1611654	-104.5007425	0.59	

REFERENCE WELLPATH IDENTIFICATION			
Operator	NOBLE ENERGY, INC	Well	Guttersen Y12-754
Field	WELD COUNTY (NOBLE NAD 83 GRID)	API/Legal	
Facility	SEC.12-T02N-R64W	Wellbore	Guttersen Y12-754 AWP
Slot	SLOT#04 Guttersen Y12-754 (610'FSL & 2271'FEL,SEC.12)		

WELLPATH DATA (186 stations)										
MD [ft]	Inclination [°]	Azimuth [°]	TVD [ft]	Vert Sect [ft]	North [ft]	East [ft]	Latitude	Longitude	DLS [°/100ft]	Comments
12854.00	90.060	1.200	6784.18	5168.76	5132.70	-667.02	40.1614261	-104.5007349	1.22	
12949.00	90.090	1.620	6784.05	5263.27	5227.67	-664.68	40.1616867	-104.5007227	0.44	
13043.00	90.340	4.070	6783.70	5356.52	5321.54	-660.02	40.1619442	-104.5007022	2.62	
13138.00	90.650	5.040	6782.88	5450.35	5416.24	-652.47	40.1622039	-104.5006714	1.07	
13232.00	91.630	0.120	6781.01	5543.61	5510.09	-648.24	40.1624614	-104.5006525	5.34	
13327.00	88.710	358.960	6780.73	5638.37	5605.08	-649.01	40.1627222	-104.5006514	3.31	
13422.00	88.520	359.140	6783.02	5733.17	5700.04	-650.58	40.1629828	-104.5006532	0.28	
13516.00	88.310	359.170	6785.62	5826.95	5793.99	-651.97	40.1632408	-104.5006544	0.23	
13611.00	89.850	358.940	6787.15	5921.76	5888.96	-653.53	40.1635015	-104.5006562	1.64	
13705.00	89.720	358.520	6787.50	6015.62	5982.94	-655.62	40.1637595	-104.5006598	0.47	
13800.00	89.480	358.770	6788.16	6110.48	6077.91	-657.86	40.1640203	-104.5006640	0.36	
13895.00	89.230	358.500	6789.23	6205.34	6172.88	-660.13	40.1642810	-104.5006683	0.39	
13989.00	89.420	358.600	6790.34	6299.21	6266.84	-662.50	40.1645390	-104.5006730	0.23	
14084.00	90.400	359.620	6790.49	6394.03	6361.83	-663.98	40.1647998	-104.5006745	1.49	
14179.00	90.180	359.600	6790.01	6488.80	6456.82	-664.63	40.1650605	-104.5006730	0.23	
14273.00	90.400	359.280	6789.53	6582.58	6550.82	-665.54	40.1653186	-104.5006725	0.41	
14368.00	89.380	358.710	6789.72	6677.41	6645.80	-667.21	40.1655793	-104.5006746	1.23	
14462.00	90.060	359.560	6790.17	6771.23	6739.79	-668.63	40.1658374	-104.5006759	1.16	
14557.00	91.230	359.290	6789.11	6866.01	6834.77	-669.58	40.1660981	-104.5006755	1.26	
14652.00	90.520	1.070	6787.65	6960.69	6929.76	-669.28	40.1663588	-104.5006706	2.02	
14746.00	90.090	0.250	6787.15	7054.32	7023.75	-668.20	40.1666168	-104.5006629	0.98	
14841.00	90.000	359.130	6787.08	7149.08	7118.75	-668.72	40.1668775	-104.5006609	1.18	
14935.00	90.370	358.840	6786.78	7242.91	7212.73	-670.38	40.1671356	-104.5006631	0.50	
15030.00	90.090	359.850	6786.39	7337.71	7307.72	-671.47	40.1673963	-104.5006631	1.10	
15125.00	90.550	357.960	6785.86	7432.54	7402.70	-673.28	40.1676571	-104.5006658	2.05	
15219.00	90.490	357.860	6785.01	7526.46	7496.63	-676.71	40.1679150	-104.5006743	0.12	
15314.00	89.970	358.960	6784.63	7621.35	7591.59	-679.35	40.1681758	-104.5006799	1.28	
15409.00	89.780	357.950	6784.84	7716.23	7686.56	-681.91	40.1684365	-104.5006852	1.08	
15503.00	89.940	357.800	6785.07	7810.15	7780.49	-685.39	40.1686944	-104.5006939	0.23	
15598.00	89.910	358.130	6785.19	7905.07	7875.43	-688.77	40.1689551	-104.5007021	0.35	
15693.00	90.000	358.180	6785.27	7999.98	7970.38	-691.82	40.1692159	-104.5007092	0.11	
15787.00	90.000	358.530	6785.27	8093.87	8064.35	-694.52	40.1694738	-104.5007151	0.37	
15882.00	89.880	358.070	6785.36	8188.76	8159.30	-697.34	40.1697346	-104.5007214	0.50	
15977.00	90.280	357.680	6785.23	8283.69	8254.24	-700.86	40.1699953	-104.5007301	0.59	
16071.00	90.000	357.710	6785.00	8377.62	8348.16	-704.64	40.1702532	-104.5007399	0.30	
16166.00	89.880	357.740	6785.10	8472.56	8443.09	-708.42	40.1705139	-104.5007496	0.13	
16261.00	90.090	357.930	6785.13	8567.48	8538.02	-712.00	40.1707745	-104.5007586	0.30	
16355.00	89.970	358.090	6785.08	8661.40	8631.96	-715.27	40.1710325	-104.5007665	0.21	
16450.00	89.940	358.110	6785.15	8756.31	8726.91	-718.42	40.1712932	-104.5007739	0.04	
16545.00	89.690	358.200	6785.46	8851.21	8821.86	-721.48	40.1715539	-104.5007810	0.28	
16639.00	89.510	358.430	6786.12	8945.11	8915.82	-724.24	40.1718119	-104.5007871	0.31	
16734.00	89.540	359.040	6786.90	9039.96	9010.79	-726.34	40.1720727	-104.5007908	0.64	
16829.00	88.680	358.850	6788.38	9134.86	9105.71	-729.74	40.1723333	-104.5007991	2.48	
16923.00	89.170	356.620	6790.14	9228.83	9199.54	-735.10	40.1725910	-104.5008145	0.58	
17018.00	89.600	358.110	6791.16	9323.77	9294.43	-739.46	40.1728516	-104.5008263	1.63	

REFERENCE WELLPATH IDENTIFICATION			
Operator	NOBLE ENERGY, INC	Well	Guttersen Y12-754
Field	WELD COUNTY (NOBLE NAD 83 GRID)	API/Legal	
Facility	SEC.12-T02N-R64W	Wellbore	Guttersen Y12-754 AWB
Slot	SLOT#04 Guttersen Y12-754 (610'FSL & 2271'FEL,SEC.12)		

WELLPATH DATA (186 stations) † = interpolated, ‡ = extrapolated station										
MD [ft]	Inclination [°]	Azimuth [°]	TVD [ft]	Vert Sect [ft]	North [ft]	East [ft]	Latitude	Longitude	DLS [°/100ft]	Comments
17113.00	89.540	359.340	6791.87	9418.63	9389.40	-741.58	40.1731124	-104.5008301	1.30	
17207.00	90.370	358.750	6791.95	9512.45	9483.39	-743.14	40.1733704	-104.5008319	1.08	
17302.00	89.750	358.070	6791.85	9607.34	9578.35	-745.78	40.1736311	-104.5008375	0.97	
17397.00	89.320	357.440	6792.62	9702.27	9673.28	-749.50	40.1738918	-104.5008470	0.80	
17450.00	89.410	357.630	6793.21	9755.23	9726.22	-751.78	40.1740372	-104.5008530	0.40	Last BH MWD Survey (226'FNL & 2384'FWL,01)
17475.00‡	89.410	357.630	6793.47	9780.22	9751.20	-752.81	40.1741058	-104.5008557	0.00	Projection of Bit (201'FNL & 2383'FWL, SEC.01)

TARGETS								
Name	TVD [ft]	North [ft]	East [ft]	Grid East [US ft]	Grid North [US ft]	Latitude	Longitude	Shape
DP 455 Sec.01-T2N-R64W	-2.00	-0.40	-67.37	3279878.76	1298091.40	40.1473180	-104.4987970	polygon
	2D Polygon: dimensions not calculated							
DP 455 Sec.12-T2N-R64W	-2.00	-0.40	-67.37	3279878.76	1298091.40	40.1473180	-104.4987970	polygon
	2D Polygon: dimensions not calculated							
Guttersen Y12-754 BHL (200'FNL & 2385'FWL,SEC.01)	6787.00	9752.40	-751.21	3279194.95	1307843.78	40.1741090	-104.5008499	point
Guttersen Y12-754 BPZ (200'FNL & 2385'FWL,SEC.01)	6787.00	9752.40	-751.21	3279194.95	1307843.78	40.1741090	-104.5008499	point
Guttersen Y12-754 LP (200'FSL & 2403'FWL,SEC.12)	6787.00	-416.47	-590.43	3279355.72	1297675.34	40.1461921	-104.5006847	point
DP 455 West Hardline (200'FNL/FSL&300'FEL/FWL)	6850.00	0.51	45.01	3279991.13	1298092.31	40.1473170	-104.4983950	polygon
	2D Polygon: dimensions not calculated							

WELLPATH COMPOSITION - Ref Wellbore: Guttersen Y12-754 AWB Ref Wellpath: Guttersen Y12-754 AWP					
Start MD [ft]	End MD [ft]	Positional Uncertainty Model	Log Name/Comment	Wellbore	Survey Date
30.00	1998.00	OWSG MWD rev2 - Standard	13.5" Surface OWSG MWD rev2 - Standard	Guttersen Y12-754 AWB	6/12/2024
1998.00	17475.00	OWSG MWD rev2 (MS+IFR1)	8.5" Monobore - OWSG MWD rev2 (MS+IFR1)	Guttersen Y12-754 AWB	6/12/2024

REFERENCE WELLPATH IDENTIFICATION			
Operator	NOBLE ENERGY, INC	Well	Guttersen Y12-754
Field	WELD COUNTY (NOBLE NAD 83 GRID)	API/Legal	
Facility	SEC.12-T02N-R64W	Wellbore	Guttersen Y12-754 AWB
Slot	SLOT#04 Guttersen Y12-754 (610'FSL & 2271'FEL,SEC.12)		

WELLPATH COMMENTS				
MD [ft]	Inclination [°]	Azimuth [°]	TVD [ft]	Comment
2161.00	13.100	204.940	2135.79	First BH MWD Survey
7301.30	89.300	359.349	6794.49	Cross Hardline (200'FSL & 2405'FWL, SEC.12)
17450.00	89.410	357.630	6793.21	Last BH MWD Survey (226'FNL & 2384'FWL,01)
17475.00	89.410	357.630	6793.47	Projection of Bit (201'FNL & 2383'FWL, SEC.01)