

FAHEY OIL & GAS - 28780
FRIEND & MEYER 3
API # 005-06835

Prepared DTA: 4/29/2024
QC: MJH

Loc. # 320744

FIELD NAME FAIRWAY - #22510

Spud Date 2/7/1983

Basin DENVER - JULESBURG

Location NWSE 2 4S 63W 6

Elevation GL (ft) 5556

Elevation KB (ft) 5566

TD (ft) 7763

PBTD (ft) 7743

Formation Tops

DENVER - 172'

UPPER ARAPAHOE - 457'

LOWER ARAPAHOE - 779'

FOX HILLS TOP - 1281'

FOX HILLS BASE - 1464'

Base of Upper Pierre - 2570'

No SUSSEX Fm Production w/in 1 mi.
SUSSEX - 4692'

No SHANNON Fm Production w/in 1 mi.

NIOBRARA - 6830'

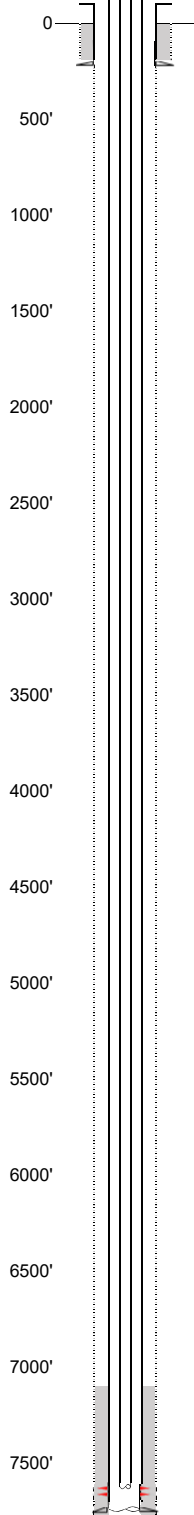
TIMPAS - 7194'

CODELL - 7235'

GREENHORN - 7300'

J SAND - 7645'

EXISTING



Existing Casing and Cement Coverage

SURF: Size: 8.625", Hole Size: 12.25 in.
Depth: 220 ft., Weight: 24
Cement: 150 sx, Top: 0 ft., Method: Vis

Deepest DWR w/in 1 mi. = 600'

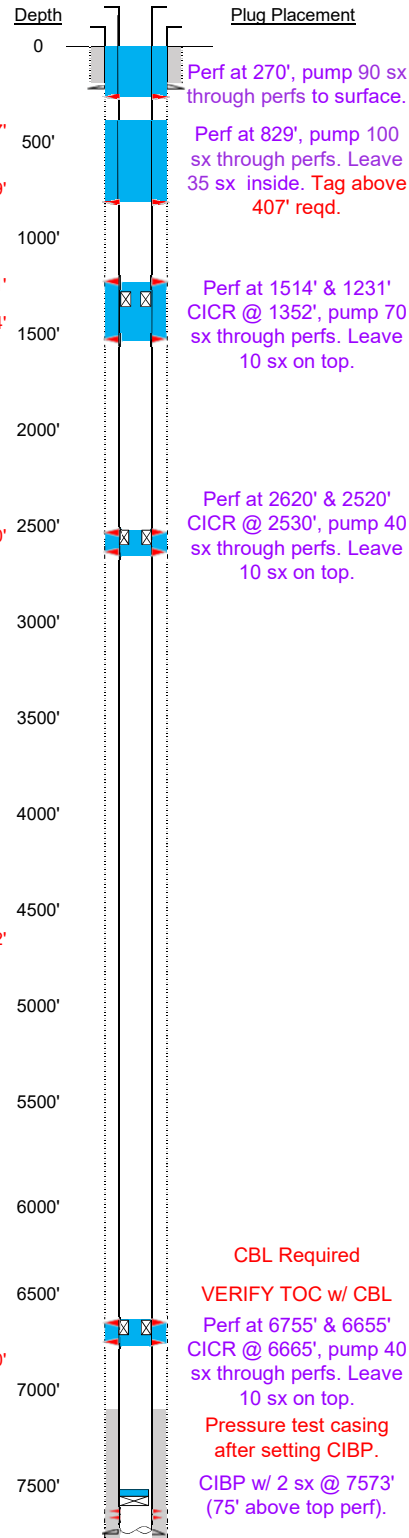
1ST, Size: 4.5", Hole Size: 7.875"

Depth: 7761 ft, Weight: 11.6

Cement: 150 sx, TOC: 7065', Method: CALC

tubing UNK
TOC = 7065' (CALC by ECMC)
J Sand Perfs 7648' - 7662'
PBTD (ft) 7743'
TD (ft) 7763'

PROPOSED



Plug Placement

Perf at 270', pump 90 sx through perfs to surface.

Perf at 829', pump 100 sx through perfs. Leave 35 sx inside. Tag above 407' reqd.

Perf at 1514' & 1231' CICR @ 1352', pump 70 sx through perfs. Leave 10 sx on top.

Perf at 2620' & 2520' CICR @ 2530', pump 40 sx through perfs. Leave 10 sx on top.

CBL Required

VERIFY TOC w/ CBL

Perf at 6755' & 6655' CICR @ 6665', pump 40 sx through perfs. Leave 10 sx on top.

Pressure test casing after setting CIBP.

CIBP w/ 2 sx @ 7573' (75' above top perf).