

Loc. # 320666

FIELD NAME FAIRWAY - #22510

Spud Date 3/17/1981

Basin DENVER - JULESBURG

Location SESE 2 4S 63W 6

Elevation GL (ft) 5544

Elevation KB (ft) 5554

TD (ft) 7773

PBTD (ft) 7730

Formation Tops

DENVER - 161'

UPPER ARAPAHOE - 445'

LOWER ARAPAHOE - 760'

FOX HILLS TOP - 1259'

FOX HILLS BASE - 1445'

Base of Upper Pierre - 2540'

No SUSSEX Fm Production w/in 1 mi.
 SUSSEX - 4663'

No SHANNON Fm Production w/in 1 mi.

NIOBRARA - 6813'

CARLILE - 7215'

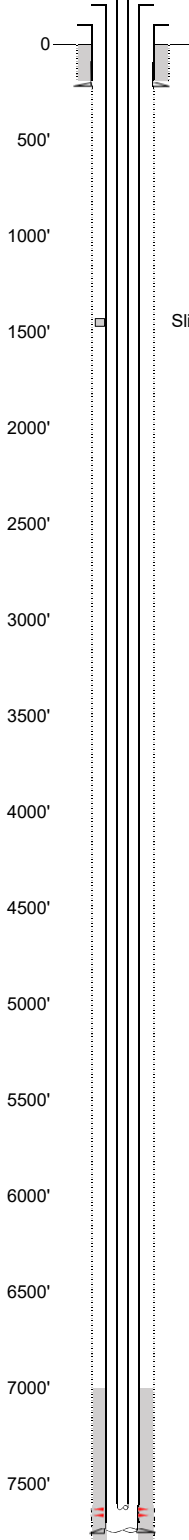
GREENHORN - 7293'

BENTONITE - 7487'

D SAND - 7577'

J SAND - 7623'

EXISTING



Existing Casing and Cement Coverage

SURF: Size: 8.625", Hole Size: 12.25 in.
 Depth: 220 ft., Weight: 24
 Cement: 200 sx, Top: 0 ft., Method: Vis

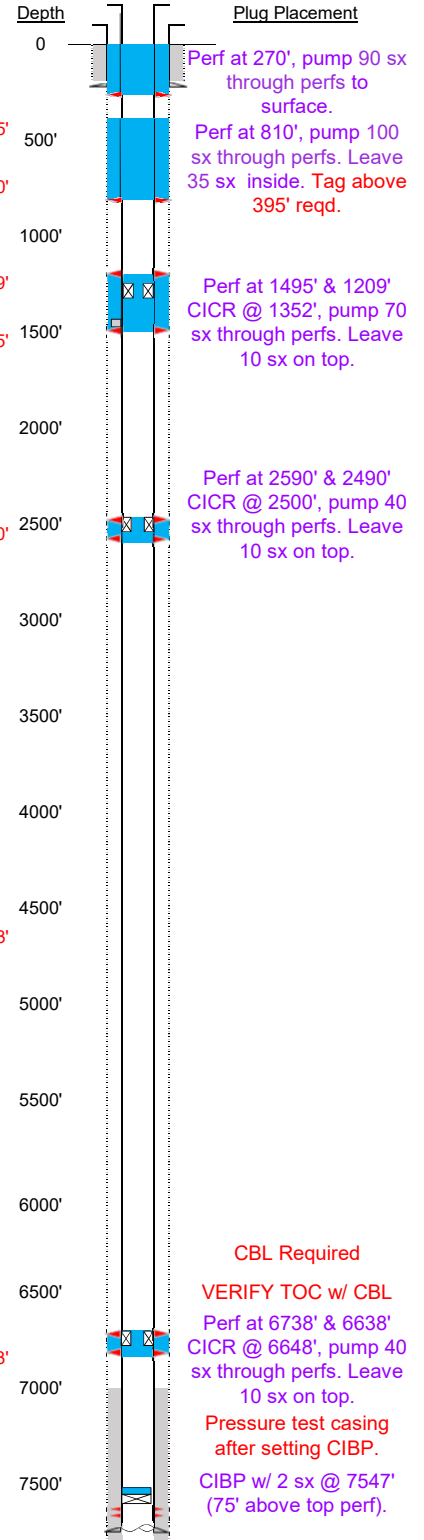
Deepest DWR w/in 1 mi. = 600'

Sliding Sleeve @ 1477' with 1000 gal Chemgel (doc #378085)

1ST, Size: 4.5", Hole Size: 7.875"
 Depth: 7748 ft, Weight: 11.6
 Cement: 175 sx, TOC: 6980', Method: CALC

tubing UNK
 TOC = 6980' (CALC by ECMC)
 J Sand Perfs 7622' - 7632'
 PBTD (ft) 7730'
 TD (ft) 7773'

PROPOSED



Depth

Plug Placement

Perf at 270', pump 90 sx through perfs to surface.

Perf at 810', pump 100 sx through perfs. Leave 35 sx inside. Tag above 395' reqd.

Perf at 1495' & 1209' CICR @ 1352', pump 70 sx through perfs. Leave 10 sx on top.

Perf at 2590' & 2490' CICR @ 2500', pump 40 sx through perfs. Leave 10 sx on top.

SUSSEX - 4663'

NIOBRARA - 6813'

CBL Required

VERIFY TOC w/ CBL

Perf at 6738' & 6638' CICR @ 6648', pump 40 sx through perfs. Leave 10 sx on top.

Pressure test casing after setting CIBP.

CIBP w/ 2 sx @ 7547' (75' above top perf).