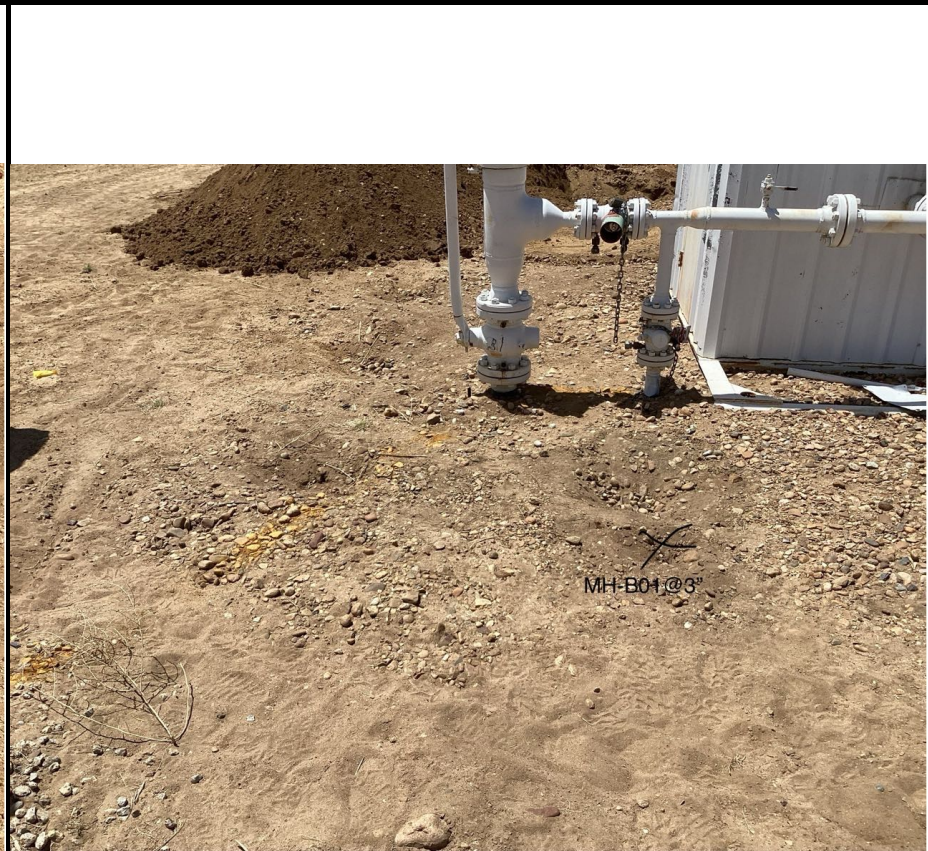
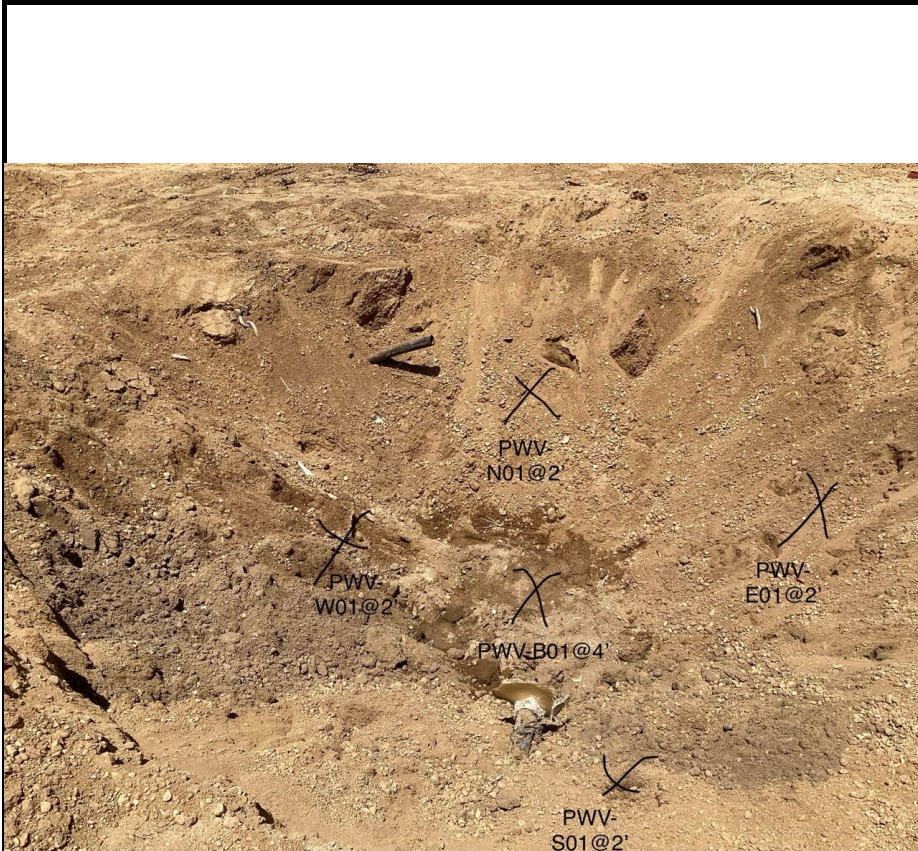




SITE NAME: Morning Fresh/Sarche Facility							DATE: 6/10/2024	REM. PROJECT #:	WEATHER: 80	
SITE DIRECTIONS: CR 31, CR 32, .5 E, .2 S into							CLIENT: Anadarko			
LEGALS AND LAT/LONG: (40.2138056, -104.7667500)							TASMAN PERSONNEL: Kevins M,			
SOIL TYPES: Clayey Sand - SC							SURFACE GRADIENT: East			
SOIL SAMPLING							FACILITY INFRASTRUCTURE			
Date/Time	Soil Sample ID	PID (ppm)	Visual	Olfactory	Photo?	Grab or Lab Sample?	EQUIPMENT		Quantity	
							Above Ground Storage Tank (AST)			
6/7/2024 13:00	AST-B01@3"	0.0	No Staining	No Odor	Yes	Lab	Buried or Partially Buried Vessel			
6/7/2024 13:02	AST-B02@3"	0.0	No Staining	No Odor	Yes	N/A	Separator			
6/7/2024 13:04	PWV-B01@4'	0.0	No Staining	No Odor	Yes	Lab	Emission Control Device (ECD)			
6/7/2024 13:06	PWV-N01@2'	0.0	No Staining	No Odor	Yes	N/A	Dump Line			
6/7/2024 13:08	PWV-S01@2'	0.0	No Staining	No Odor	Yes	N/A	Wellhead			
6/7/2024 13:10	PWV-E01@2'	0.0	No Staining	No Odor	Yes	N/A	Flowline			
6/7/2024 13:12	PWV-W01@2'	0.0	No Staining	No Odor	Yes	N/A	Other:			
6/7/2024 13:14	SEP1-B01@3"	0.0	No Staining	No Odor	Yes	Lab	Soil Loads Removed			
6/7/2024 13:16	SEP1-B02@3"	0.0	No Staining	No Odor	Yes	Lab	IMPACTED SOIL IDENTIFIED?			
6/7/2024 13:18	SEP2-B01@3"	0.0	No Staining	No Odor	Yes	Lab	ESTIMATED VOLUME OF IMPACTS:			
6/7/2024 13:20	SEP2-B02@3"	0.0	No Staining	No Odor	Yes	Lab	Date	Number	CY	
6/7/2024 13:22	MH-B01@3"	0.0	No Staining	No Odor	Yes	N/A				
6/7/2024 13:24	ECD-B01@3"	0.0	No Staining	No Odor	Yes	N/A				
6/7/2024 13:26	DL-B01@4'	0.6	No Staining	No Odor	Yes	N/A				
6/7/2024 14:00	BG-01@3"	0.0	No Staining	No Odor	Yes	Lab				
6/7/2024 14:02	BG-02@3"	0.0	No Staining	No Odor	Yes	Lab	Total Removed		0	0
6/7/2024 14:04	BG-03@3"	0.0	No Staining	No Odor	Yes	Lab	Disposal Facility:			
6/7/2024 14:06	BG-04@3"	0.0	No Staining	No Odor	Yes	Lab	Groundwater Recovery			
6/10/2024 13:48	PWV-B01R@4'	0.1	No Staining	No Odor	Yes	Lab	DATE GW ENCOUNTERED:		DEPTH:	
6/10/2024 13:50	PWV-N01R@2'	0.0	No Staining	No Odor	Yes	Lab	GROUNDWATER IN CONTACT WITH IMPACTED SOIL?			
6/10/2024 13:52	AST-B01R@3"	0.1	No Staining	No Odor	Yes	Lab				
6/10/2024 13:54	SEP1-B01R@3"	0.0	No Staining	No Odor	Yes	Lab	LNAPL OR SHEEN OBSERVED ON GW?			
GROUNDWATER SAMPLING							Date		BBLs	
Date/Time	Groundwater Sample ID	Depth Collected	Turbid?	Sheen?	Odor?	Photo?				
							Total Removed		0	
							Disposal Facility:			



SITE NAME: Morning Fresh/Sarthe Facility							DATE: 6/10/2024	REM. PROJECT #:	WEATHER: 80 Sunny		
SITE DIRECTIONS: CR 31, CR 32, .5 E, .2 S into							CLIENT: Anadarko				
LEGALS AND LAT/LONG: (40.2138056, -104.7667500)							TASMAN PERSONNEL: Kevins Magouirk				
SOIL TYPES: Well Graded Sand - SW							SURFACE GRADIENT: East				
SOIL SAMPLING							FACILITY INFRASTRUCTURE				
Date/Time	Soil Sample ID	PID (ppm)	Visual	Olfactory	Photo?	Grab or Lab Sample?	EQUIPMENT		Quantity		
							Above Ground Storage Tank (AST)				
6/10/2024 13:56	SEP1-B02R@3"	0.0	No Staining	No Odor	Yes	Lab	Buried or Partially Buried Vessel				
6/10/2024 13:58	SEP2-B01R@3"	0.0	No Staining	No Odor	Yes	Lab	Separator				
6/10/2024 14:00	SEP2-B02R@3"	0.0	No Staining	No Odor	Yes	Lab	Emission Control Device (ECD)				
6/10/2024 14:30	BG-05@2'	0.0	No Staining	No Odor	Yes	Lab	Dump Line				
6/10/2024 14:32	BG-05@4'	0.0	No Staining	No Odor	Yes	Lab	Wellhead				
6/10/2024 14:34	BG-06@2'	0.0	No Staining	No Odor	Yes	Lab	Flowline				
6/10/2024 14:36	BG-06@4'	0.1	No Staining	No Odor	Yes	Lab	Other:				
6/10/2024 14:38	BG-07@2'	0.1	No Staining	No Odor	Yes	Lab	Soil Loads Removed				
6/10/2024 14:40	BG-07@4	0.0	No Staining	No Odor	Yes	Lab	IMPACTED SOIL IDENTIFIED?				
6/13/2024 13:30	AST/PWV-B01@4'	0.7	No Staining	No Odor	Yes	Lab	ESTIMATED VOLUME OF IMPACTS:				
6/13/2024 13:32	AST/PWV-B02@4'	0.5	No Staining	No Odor	Yes	Lab	Date	Number	CY		
6/13/2024 13:34	AST/PWV-N01@2'	0.4	No Staining	No Odor	Yes	Lab					
6/13/2024 13:36	AST/PWV-N02@2'	0.4	No Staining	No Odor	Yes	Lab					
6/13/2024 13:38	AST/PWV-S01@2'	0.3	No Staining	No Odor	Yes	Lab					
6/13/2024 13:40	AST/PWV-S02@2'	0.3	No Staining	No Odor	Yes	Lab					
6/13/2024 13:42	AST/PWV-E01@2'	0.5	No Staining	No Odor	Yes	Lab	Total Removed		0	0	
6/13/2024 13:44	AST/PWV-W01@2'	0.3	No Staining	No Odor	Yes	Lab	Disposal Facility:				
							Groundwater Recovery				
							DATE GW ENCOUNTERED:			DEPTH:	
							GROUNDWATER IN CONTACT WITH IMPACTED SOIL?				
							LNAPL OR SHEEN OBSERVED ON GW?				
GROUNDWATER SAMPLING							Date		BBLs		
Date/Time	Groundwater Sample ID	Depth Collected	Turbid?	Sheen?	Odor?	Photo?					
							Total Removed		0		
							Disposal Facility:				



Equipment ID:		Equipment Type:	
Material:	Volume:	Contents:	
Notes/Conditions:			

Equipment ID:		Equipment Type:	
Material:	Volume:	Contents:	
Notes/Conditions:			



Equipment ID:		Equipment Type:	
Material:	Volume:	Contents:	
Notes/Conditions:			

Equipment ID:		Equipment Type:	
Material:	Volume:	Contents:	
Notes/Conditions:			



Equipment ID:		Equipment Type:		Equipment ID:		Equipment Type:	
Material:	Volume:	Contents:		Material:	Volume:	Contents:	
Notes/Conditions:				Notes/Conditions:			



Equipment ID:		Equipment Type:		Equipment ID:		Equipment Type:	
Material:	Volume:	Contents:		Material:	Volume:	Contents:	
Notes/Conditions:				Notes/Conditions:			



Equipment ID:		Equipment Type:	
Material:	Volume:	Contents:	
Notes/Conditions:			

Equipment ID:		Equipment Type:	
Material:	Volume:	Contents:	
Notes/Conditions:			



BG-07@2', 4'



AST-B01R@3'

Equipment ID:		Equipment Type:	
Material:	Volume:	Contents:	
Notes/Conditions:			

Equipment ID:		Equipment Type:	
Material:	Volume:	Contents:	
Notes/Conditions:			



Equipment ID:		Equipment Type:	
Material:	Volume:	Contents:	
Notes/Conditions:			

Equipment ID:		Equipment Type:	
Material:	Volume:	Contents:	
Notes/Conditions:			



Equipment ID:		Equipment Type:	
Material:	Volume:	Contents:	
Notes/Conditions:			

Equipment ID:		Equipment Type:	
Material:	Volume:	Contents:	
Notes/Conditions:			



Equipment ID:		Equipment Type:		Equipment ID:		Equipment Type:	
Material:	Volume:	Contents:		Material:	Volume:	Contents:	
Notes/Conditions:				Notes/Conditions:			



Equipment ID:		Equipment Type:	
Material:	Volume:	Contents:	
Notes/Conditions:			



Equipment ID:		Equipment Type:	
Material:	Volume:	Contents:	
Notes/Conditions:			