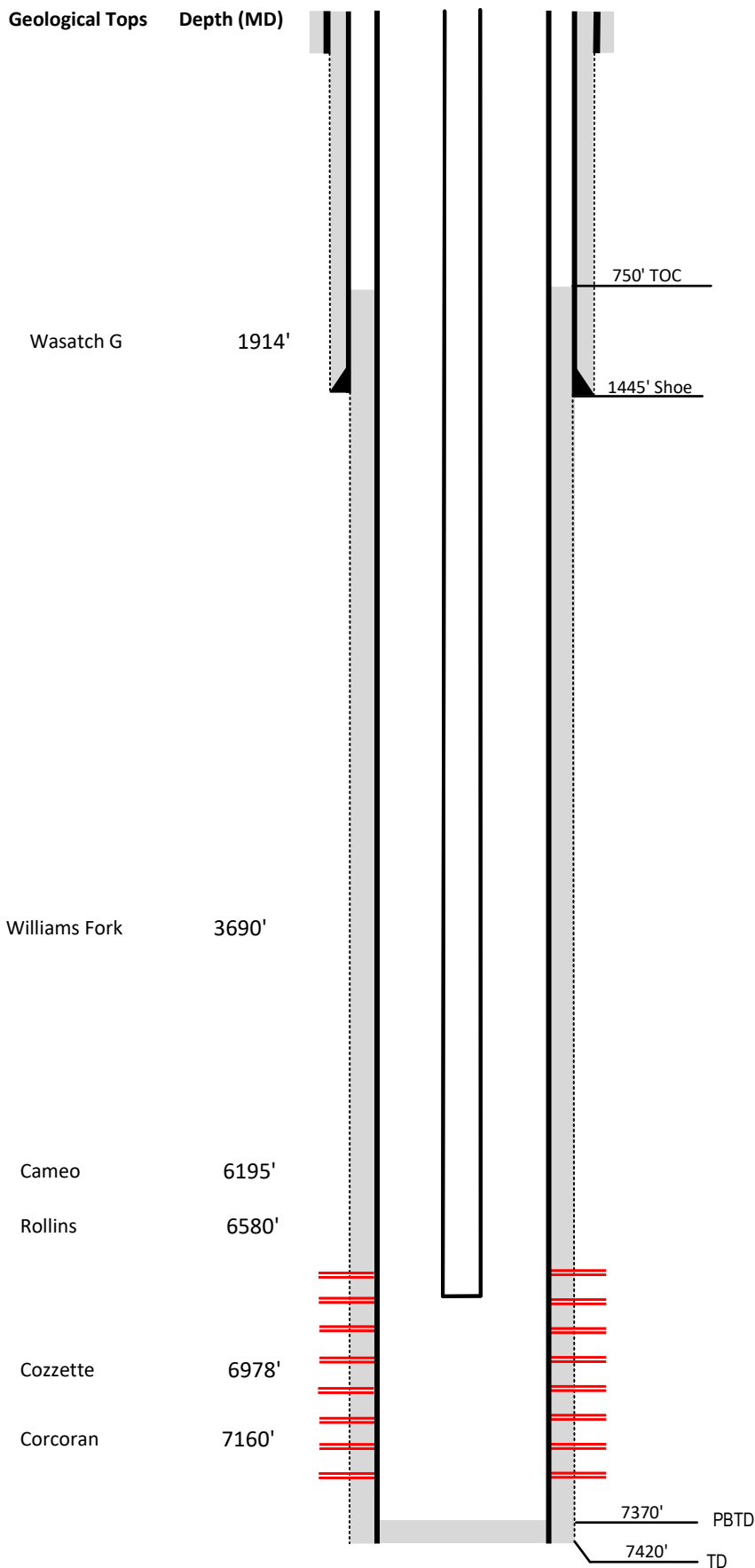


Laramie Energy

Current Wellbore Diagram

Not to scale

FEDERAL WELL: YES NO



Well Name Wood Spangler #21-1
API 05-077-09163-00
Surface Location SWSW Sec 15 T9S R94W
GPS Coordinates 39.269974, -107.877804
County, State Mesa County, Co
Diagram Date 2/6/2024

Hole	26" @ 40'
Conductor	16" @ 40'
Cement	Surface

Surface Hole	12.25" @ 1468'
Casing	8 5/8" 32# J-55 @ 1468'
Cement	420 sks
TOC	Surface

Production Hole	7.875" @ 7415'
Casing	4 1/2" 11.6# I-80 @ 7415'
Cement	1260 sks
TOC	750'

Tubing	2 3/8" J-55 EUE @ 6782'
---------------	-------------------------

Perforations	Top	Bottom
	5373'	7261'