

DATE:	June 2024
DESIGNED BY:	S. Vogt
DRAWN BY:	L. Reed

**Tasman, Inc.**  
6855 W. 119th Ave  
Broomfield, CO 80020

**Crestone Peak Resources Operating LLC**  
**State Bierstadt 4-65 35-34 2AH**  
SENE Sec. 35-T4S-R65W  
Arapahoe County, Colorado

Site Location Map

Figure  
1

**Legend**

- + Soil sample location – Field Screened (Collected via Trimble GPS)
- + Soil sample location – Exceeded ECMC Table 915-1 Soil Standards (Collected via Trimble GPS)

ECMC Table 915-1 Soil Standards	
Compound	Standard
Benzene (mg/kg)	0.0026 / 1.2
Naphthalene (mg/kg)	0.0038 / 2
TVPH-GRO (mg/kg)	500
TEPH-DRO (mg/kg)	
TEPH-ORO (mg/kg)	
1,2,4-Trimethylbenzene (mg/kg)	0.0081 / 30
Flourene (mg/kg)	0.54 / 240
1-Methylnaphthalene (mg/kg)	0.006 / 18
2-Methylnaphthalene (mg/kg)	0.019 / 24
Barium (mg/kg)	82 / 15,000
Chromium (VI) (mg/kg)	0.00067 / 0.3
Selenium (mg/kg)	0.26 / 390
pH	6 - 8.3
SAR	< 6
EC (mmhos/cm)	< 4
Boron (mg/L)	2

**Notes**

Crestone Peak Resources Operating, LLC site infrastructure has been removed.

Chrome (IV) = Hexavalent Chromium

GPS = Global Positioning System

ECMC = Colorado Energy & Carbon Management Commission

TVPH-GRO = Total Volatile Petroleum Hydrocarbons – Gasoline Range Organics

TEPH-DRO = Total Extractable Petroleum Hydrocarbons – Diesel Range Organics

TEPH-ORO = Total Extractable Petroleum Hydrocarbons – Oil Range Organics

EC = Electrical Conductivity

SAR = Sodium Adsorption Ratio

mg/kg – milligrams per kilogram

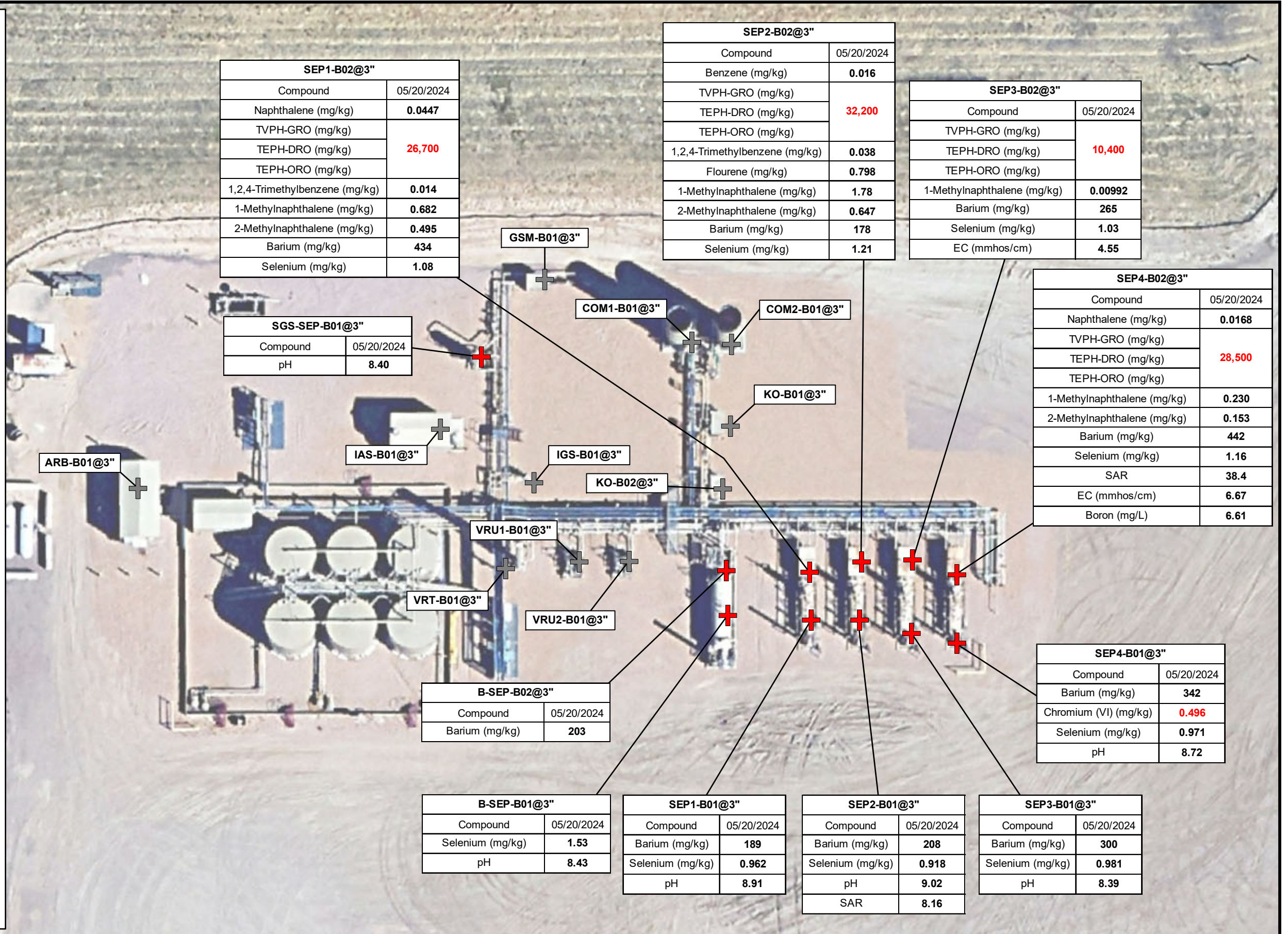
mg/L – milligrams per liter

mmhos/cm – millimhos per centimeter

0 ft. 30 ft. 60 ft.



Image Source: Google Earth



DATE: June 27, 2024

DESIGNED BY: S. Vogt

DRAWN BY: T. Smith

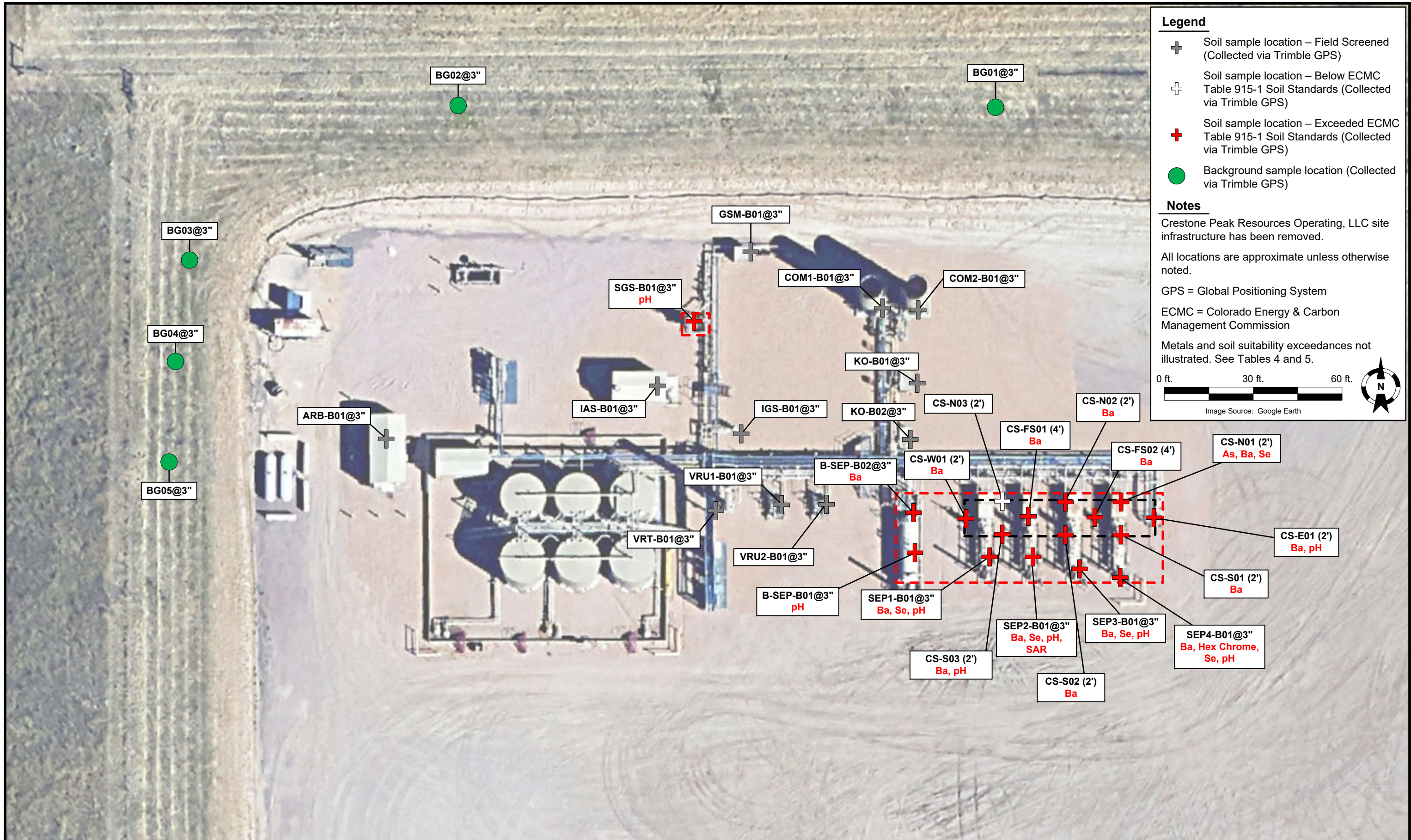


**Tasman, Inc.**  
6855 W119th Ave.  
Broomfield, CO 80020

**Crestone Peak Resources Operating, LLC**  
State Bierstadt 4-65 35-34 2AH  
SESE Sec. 35-T4S-R65W  
Arapahoe County, Colorado

Soil Sample Location Map  
(05/20/2024)

Figure  
2



**Legend**

- ⊕ Soil sample location – Field Screened (Collected via Trimble GPS)
- ⊕ Soil sample location – Below ECMC Table 915-1 Soil Standards (Collected via Trimble GPS)
- ⊕ Soil sample location – Exceeded ECMC Table 915-1 Soil Standards (Collected via Trimble GPS)
- Background sample location (Collected via Trimble GPS)

**Notes**

Crestone Peak Resources Operating, LLC site infrastructure has been removed.

All locations are approximate unless otherwise noted.

GPS = Global Positioning System

ECMC = Colorado Energy & Carbon Management Commission

Metals and soil suitability exceedances not illustrated. See Tables 4 and 5.

0 ft. 30 ft. 60 ft.

Image Source: Google Earth

DATE:	June 12, 2024
DESIGNED BY:	S. Vogt
DRAWN BY:	L. Molson



**Tasman, Inc.**  
 6855 W119th Ave.  
 Broomfield, CO 80020

**Crestone Peak Resources Operating, LLC**  
 State Bierstadt 4-65 35-34 2AH  
 SESE Sec. 35-T4S-R65W  
 Arapahoe County, Colorado

Soil Sample Location Map  
 (05/20/2024 & 06/15/2024)

Figure  
 2

**Legend**

- + Soil sample location – Field Screened (Collected via Trimble GPS)
- + Soil sample location – Below ECMC Table 915-1 Soil Standards (Collected via Trimble GPS)
- + Soil sample location – Exceeded ECMC Table 915-1 Soil Standards (Collected via Trimble GPS)
- Excavation extent (Collected via Trimble GPS)

ECMC Table 915-1 Soil Standards	
Compound	Standard
Arsenic (mg/kg)	0.29 / 0.68
Barium (mg/kg)	82 / 15,000
Selenium (mg/kg)	0.26 / 390
pH	6 - 8.3

**Notes**

Crestone Peak Resources Operating, LLC site infrastructure has been removed.

All locations are approximate unless otherwise noted.

Locations removed via excavation not shown unless otherwise noted.

GPS = Global Positioning System

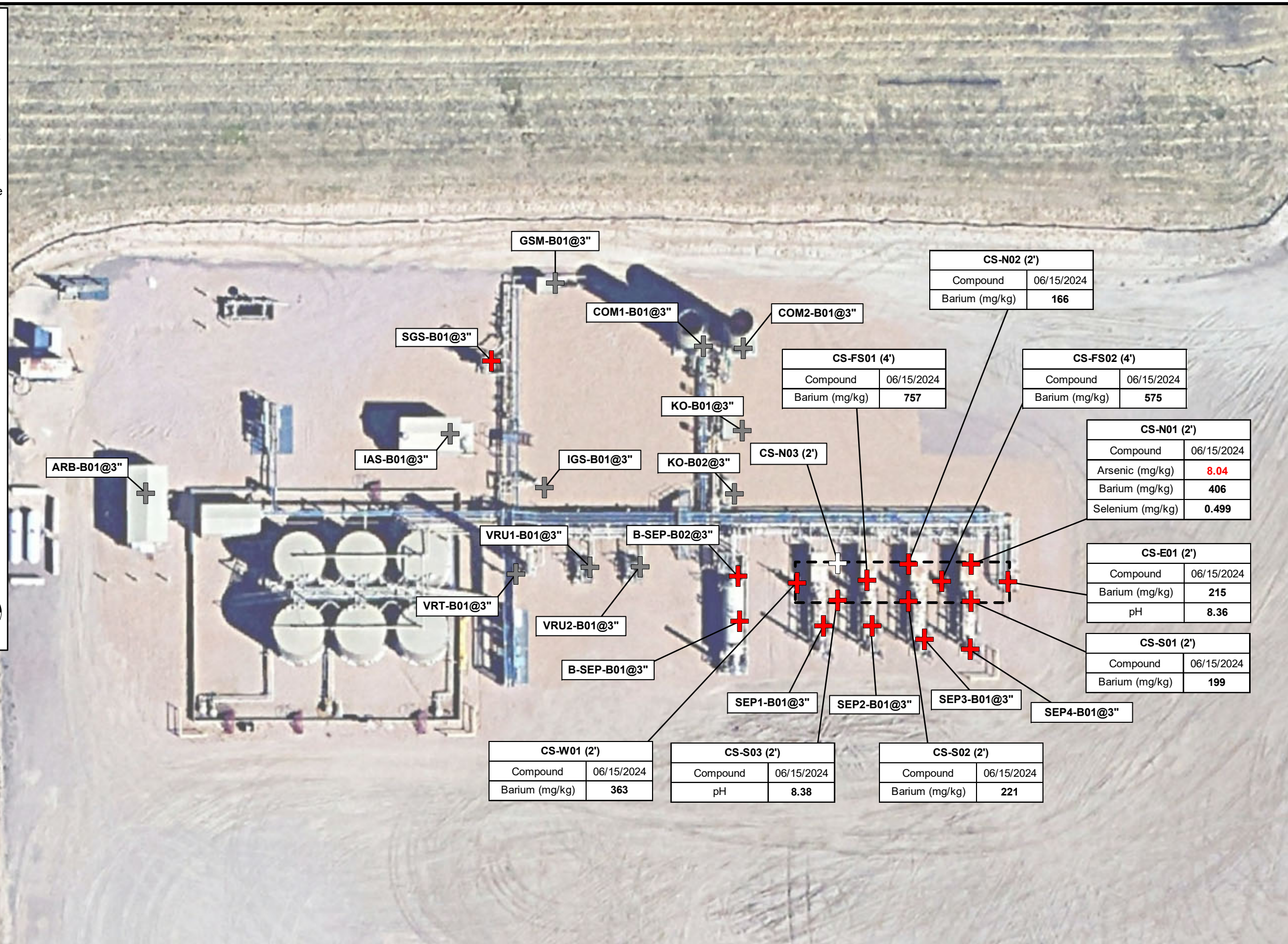
ECMC = Colorado Energy & Carbon Management Commission

mg/kg – milligrams per kilogram

0 ft.      30 ft.      60 ft.



Image Source: Google Earth



CS-N02 (2')	
Compound	06/15/2024
Barium (mg/kg)	166

CS-FS01 (4')	
Compound	06/15/2024
Barium (mg/kg)	757

CS-FS02 (4')	
Compound	06/15/2024
Barium (mg/kg)	575

CS-N01 (2')	
Compound	06/15/2024
Arsenic (mg/kg)	8.04
Barium (mg/kg)	406
Selenium (mg/kg)	0.499

CS-E01 (2')	
Compound	06/15/2024
Barium (mg/kg)	215
pH	8.36

CS-S01 (2')	
Compound	06/15/2024
Barium (mg/kg)	199

CS-W01 (2')	
Compound	06/15/2024
Barium (mg/kg)	363

CS-S03 (2')	
Compound	06/15/2024
pH	8.38

CS-S02 (2')	
Compound	06/15/2024
Barium (mg/kg)	221

DATE:	June 27, 2024
DESIGNED BY:	S. Vogt
DRAWN BY:	T. Smith

**Tasman, Inc.**  
 6855 W119th Ave.  
 Broomfield, CO 80020

**Crestone Peak Resources Operating, LLC**  
**State Bierstadt 4-65 35-34 2AH**  
 SESE Sec. 35-T4S-R65W  
 Arapahoe County, Colorado

Soil Sample Location Map  
 (06/15/2024)

Figure  
 3



**Legend**

- Background sample location (Collected via Trimble GPS)
- ⌈⌋ Excavation extent (Collected via Trimble GPS)

**Notes**

Crestone Peak Resources Operating, LLC site infrastructure has been removed.


All locations are approximate unless otherwise noted.

GPS = Global Positioning System

ECMC = Colorado Energy & Carbon Management Commission

0 ft. 30 ft. 60 ft.

Image Source: Google Earth



DATE:	June 28, 2024
DESIGNED BY:	S. Vogt
DRAWN BY:	T. Smith



**Tasman, Inc.**  
 6855 W119th Ave.  
 Broomfield, CO 80020

**Crestone Peak Resources Operating, LLC**  
**State Bierstadt 4-65 35-34 2AH**  
 SESE Sec. 35-T4S-R65W  
 Arapahoe County, Colorado

Background Soil Sample  
 Location Map  
 (05/20/2024)

Figure  
 4