

UNGRADED ELEVATION: 5582.5'
FINAL ELEVATION: 5581.8'
AREA OF DISTURBANCE: 1.3± ACRES
AREA OF WORKING PAD SURFACE: 1.0± ACRES

JACKSON 31 SENW 3054

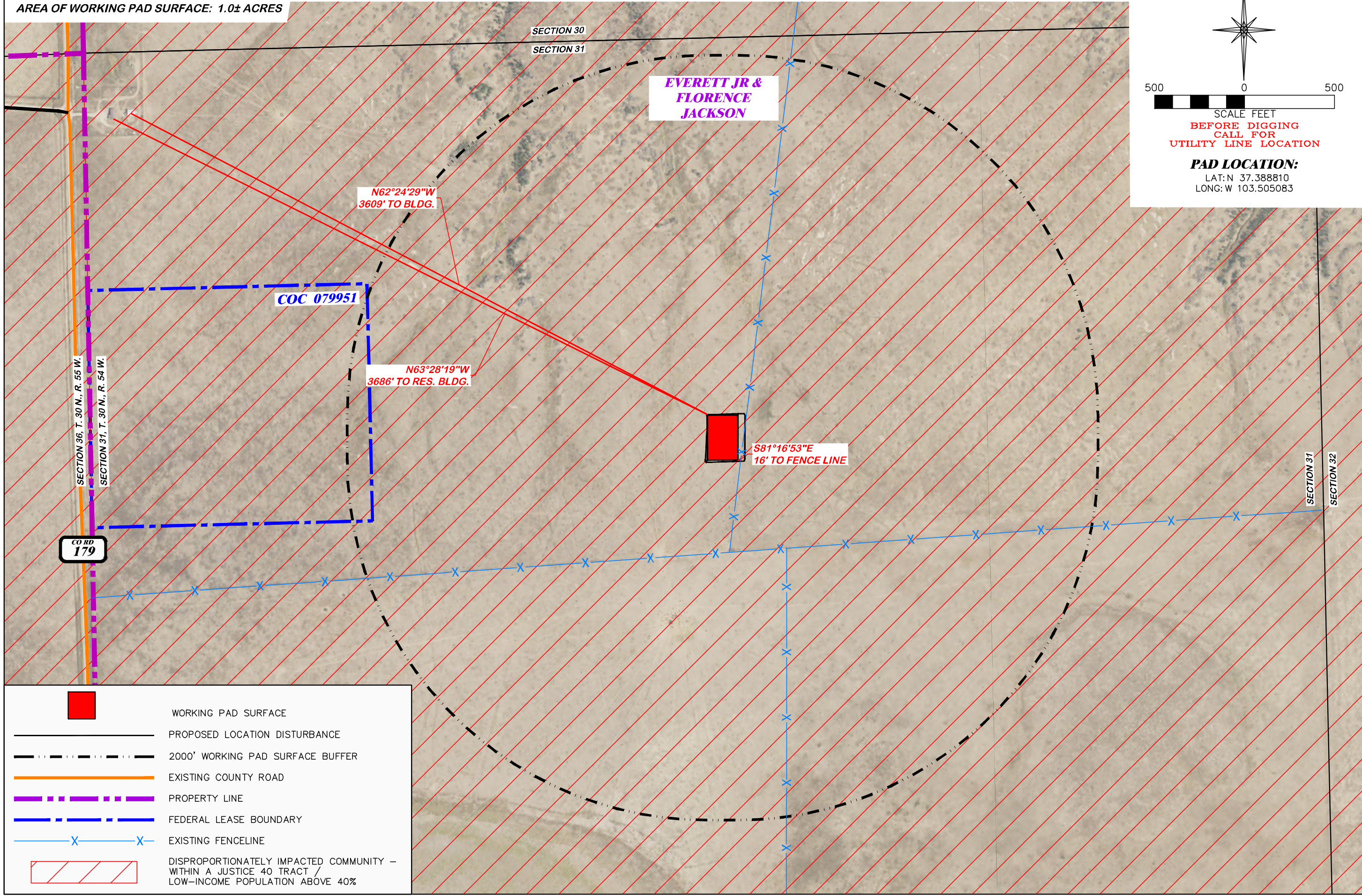
N

500 0 500

SCALE FEET

BEFORE DIGGING
CALL FOR
UTILITY LINE LOCATION

PAD LOCATION:
LAT: N 37.388810
LONG: W 103.505083



WORKING PAD SURFACE

PROPOSED LOCATION DISTURBANCE

2000' WORKING PAD SURFACE BUFFER

EXISTING COUNTY ROAD

PROPERTY LINE

FEDERAL LEASE BOUNDARY

EXISTING FENCELINE

DISPROPORTIONATELY IMPACTED COMMUNITY –
WITHIN A JUSTICE 40 TRACT /
LOW-INCOME POPULATION ABOVE 40%

DISPROPORTIONATELY IMPACTED COMMUNITIES MAP

DRG

RIFFIN & ASSOCIATES, INC.

1414 ELK ST., ROCK SPRINGS, WY 82901

(307) 962-5028

DRAWN: 7/19/22 - EMB

REVISD: 4/9/24 - JMB

ADDED MAP

SCALE: 1" = 500'

DRG JOB No. 22227

304b(7)J DIC MAP

BNL (ENTERPRISE) INC.

JACKSON 31 SENW 3054

SENW, SECTION 31, T.30 S., R.54 W., 6th P.M.,

LAS ANIMAS COUNTY, COLORADO