

JACKSON 31 SENW 3054

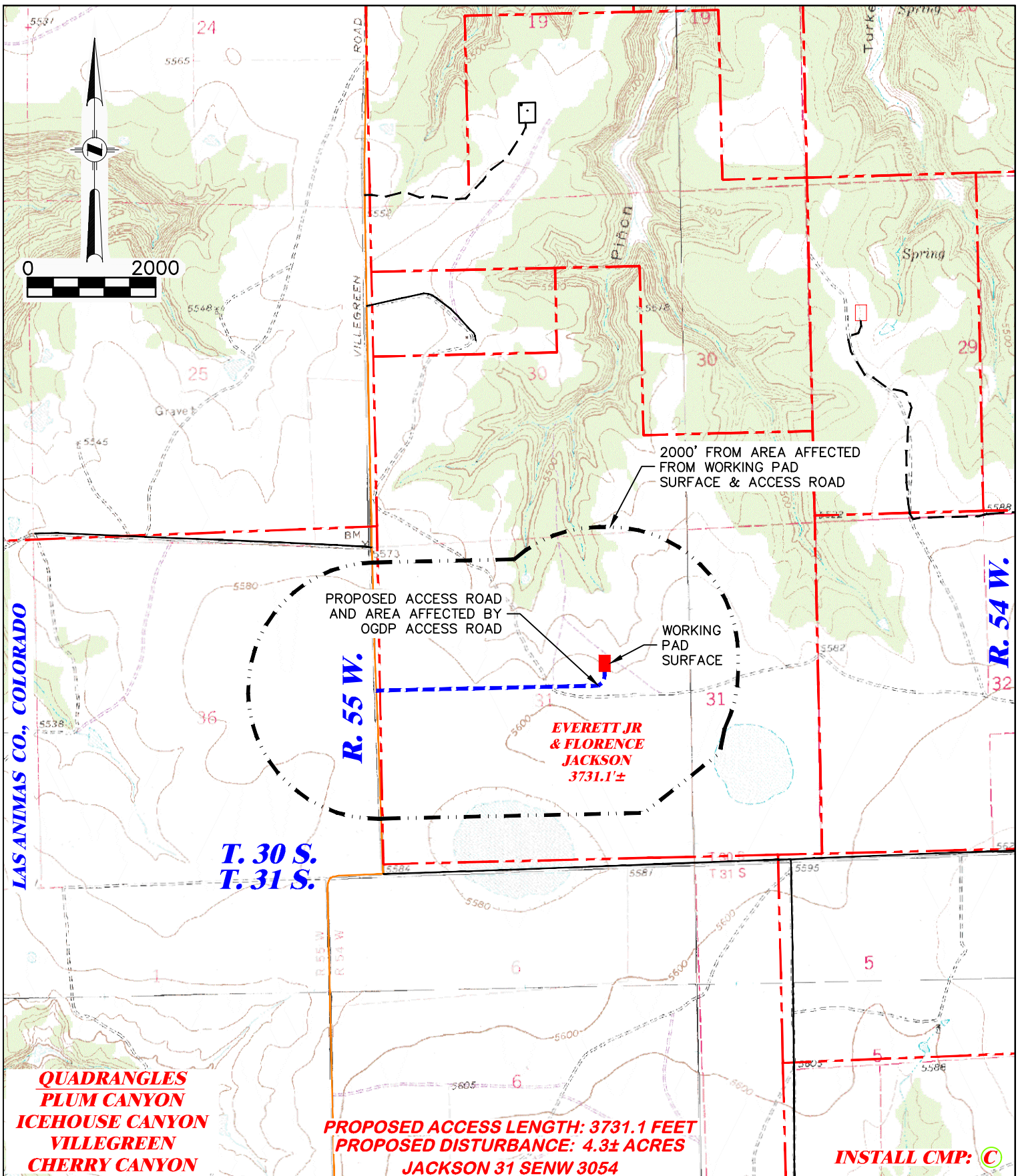
- PROPOSED ACCESS ROAD (0.7 MILES)
- ACCESS ALONG COUNTY ROAD (11.3 MILES)
- STATE HIGHWAY
- DIRT / COUNTY ROAD
- RESIDENTIAL BUILDING UNIT (RBU) WITHIN 2000' OF ACCESS ROUTE

PROPOSED ACCESS ROAD MAP

**HAUL ROUTE
BNL (ENTERPRISE) INC.
JACKSON 31 SENW 3054
SENW, SECTION 31, T. 30 S., R. 54 W., 6th P.M.,
LAS ANIMAS COUNTY, COLORADO**

DRG RIFFIN & ASSOCIATES, INC.
(307) 362-5028 1414 ELK ST., ROCK SPRINGS, WY 82901

DRAWN: 7/19/22 - EMB	SCALE: 1" = 8000'
REVISED: NA	DRG JOB No. 22227
	304b(7)F ACCESS



QUADRANGLES
PLUM CANYON
ICEHOUSE CANYON
VILLEGREEN
CHERRY CANYON

PROPOSED ACCESS LENGTH: 3731.1 FEET
PROPOSED DISTURBANCE: 4.3± ACRES
JACKSON 31 SENW 3054

INSTALL CMP: C

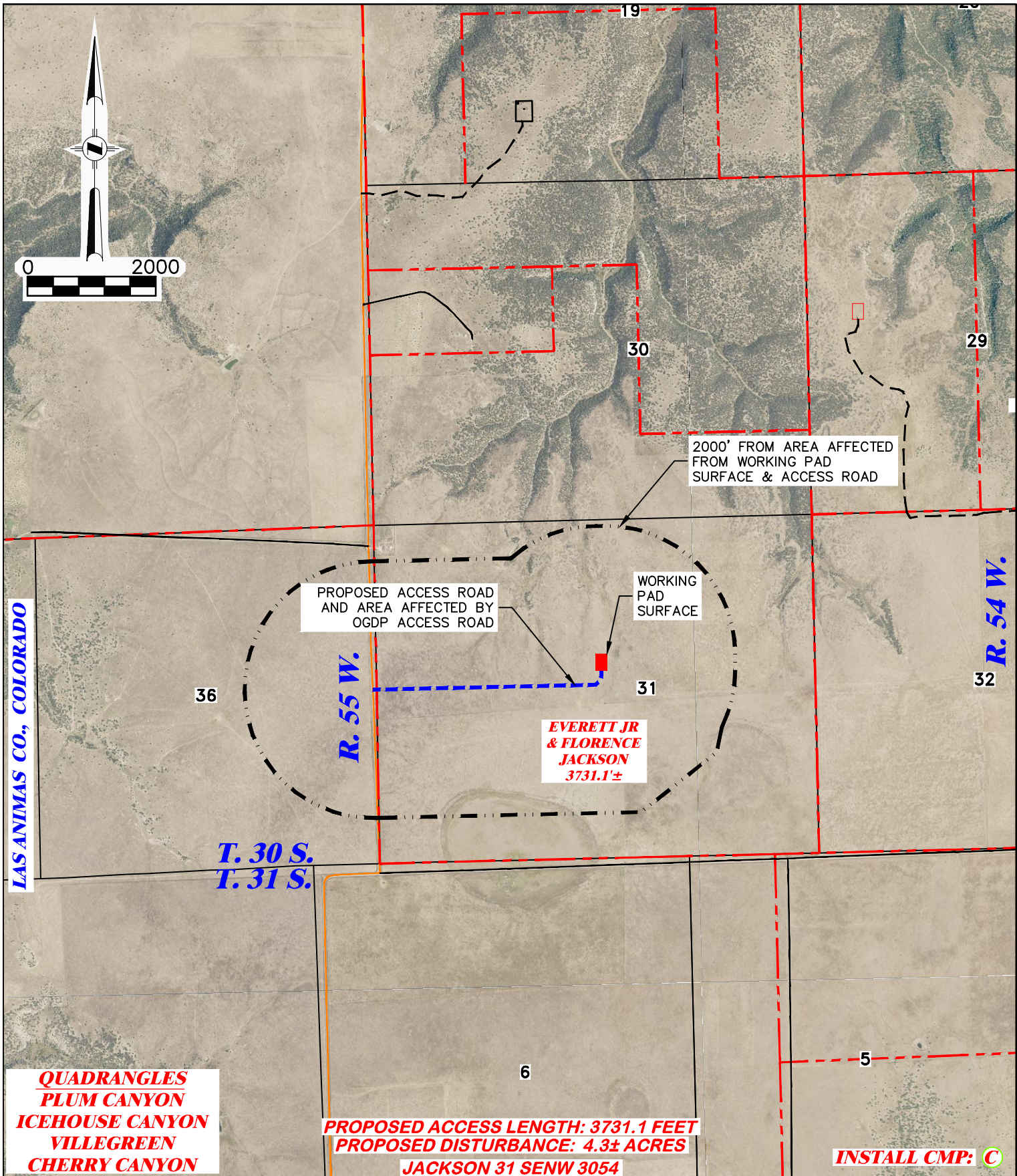
DRG RIFFIN & ASSOCIATES, INC.
 (307) 362-5028 1414 ELK ST., ROCK SPRINGS, WY 82901

DRAWN: 7/19/22 - EMB	SCALE: 1" = 2000'
REVISED: NA	DRG JOB No. 22227
304b(7)F ROAD SHEET 1 OF 2	

PROPOSED NEW ACCESS MAP
BNL (ENTERPRISE) INC.
JACKSON 31 SENW 3054
SENW, SECTION 31, T. 30 S., R. 54 W., 6th P.M.,
LAS ANIMAS COUNTY, COLORADO

PROPOSED WORKING PAD SURFACE

PROPOSED ACCESS W/ AFFECTED AREA



 (307) 362-5028 1414 ELK ST., ROCK SPRINGS, WY 82901		PROPOSED NEW ACCESS MAP BNL (ENTERPRISE) INC. JACKSON 31 SENW 3054	
		SENW, SECTION 31, T. 30 S., R. 54 W., 6th P.M., LAS ANIMAS COUNTY, COLORADO	
DRAWN: 7/19/22 - EMB	SCALE: 1" = 2000'	 PROPOSED WORKING PAD SURFACE	PROPOSED ACCESS W/ AFFECTED AREA
REVISED: NA	DRG JOB No. 22227		
304b(7)F ROAD SHEET 2 OF 2			