

UNGRADED ELEVATION: 5539.8'  
FINAL ELEVATION: 5538.6'  
AREA OF DISTURBANCE: 1.2± ACRES  
AREA OF WORKING PAD SURFACE: 1.0± ACRES

JACKSON 29 SWNW 3054

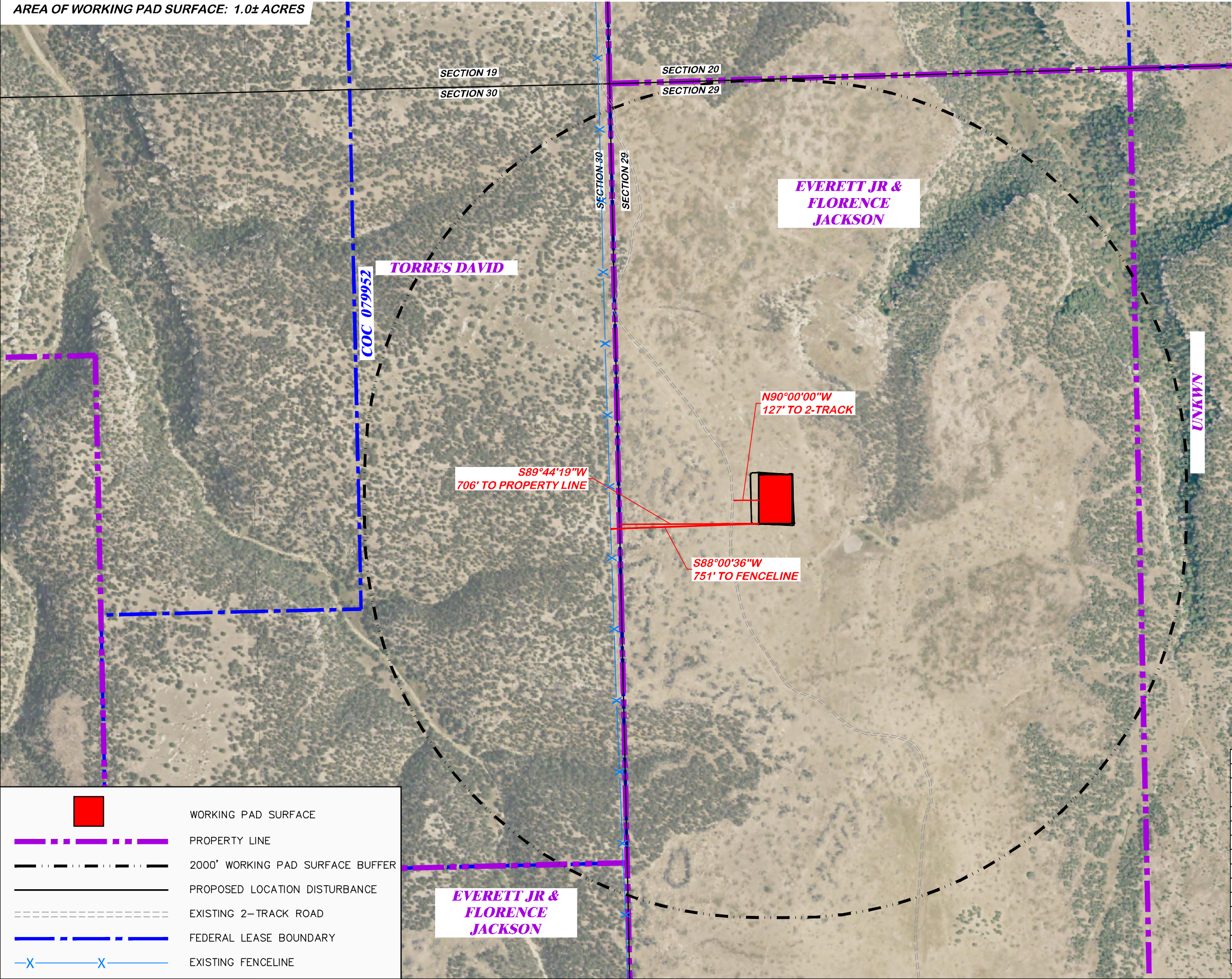
N

5000500

SCALE FEET

BEFORE DIGGING  
CALL FOR  
UTILITY LINE LOCATION

PAD LOCATION:  
LAT: N 37.403592  
LONG: W 103.490913



WORKING PAD SURFACE

PROPERTY LINE

2000' WORKING PAD SURFACE BUFFER

PROPOSED LOCATION DISTURBANCE

EXISTING 2-TRACK ROAD

FEDERAL LEASE BOUNDARY

EXISTING FENCELINE

LOCATION DRAWING FEATURES 304b(7)A	
FEATURE	DISTANCE
i BUILDING	5280'+ SE
i BUILDING UNITS	5280'+ SE
ii PUBLICLY MAINTAINED ROADS AND TRAILS	5280'+ N
iii FENCES	751' W
iv ABOVE GROUND UTILITIES	5280'+ NW
v RAILROADS	5280'+ NW
vi PIPELINES	5280'+ N
vii MINES	5280'+ S
viii OIL AND GAS WELLS AND PRODUCTION FACILITIES	5280'+ N
ix INJECTION WELLS	5280'+ N
x PLUGGED OIL AND GAS WELLS	5280'+ N
xi KNOWN WATER WELLS	4094' NE
xii KNOWN SEWERS WITH MANHOLES	5280'+ N

RIFFIN & ASSOCIATES, INC.  
1414 ELK ST., ROCK SPRINGS, WY 82901  
(307) 362-5028

DRAWN: 8/1/22 - EMB	SCALE: 1" = 500'
REVISED: 4/9/24 - JMB	DRG JOB No. 22225
UPDATED TABLE	304b(7)A LOC AERIAL

LOCATION DRAWING

BNL (ENTERPRISE) INC.  
JACKSON 29 SWNW 3054  
SWNW, SECTION 29, T.30 S., R. 54 W., 6th P.M.,  
LAS ANIMAS COUNTY, COLORADO



UNGRADED ELEVATION: 5539.8'  
FINAL ELEVATION: 5538.6'  
AREA OF DISTURBANCE: 1.2± ACRES  
AREA OF WORKING PAD SURFACE: 1.0± ACRES

JACKSON 29 SWNW 3054

N

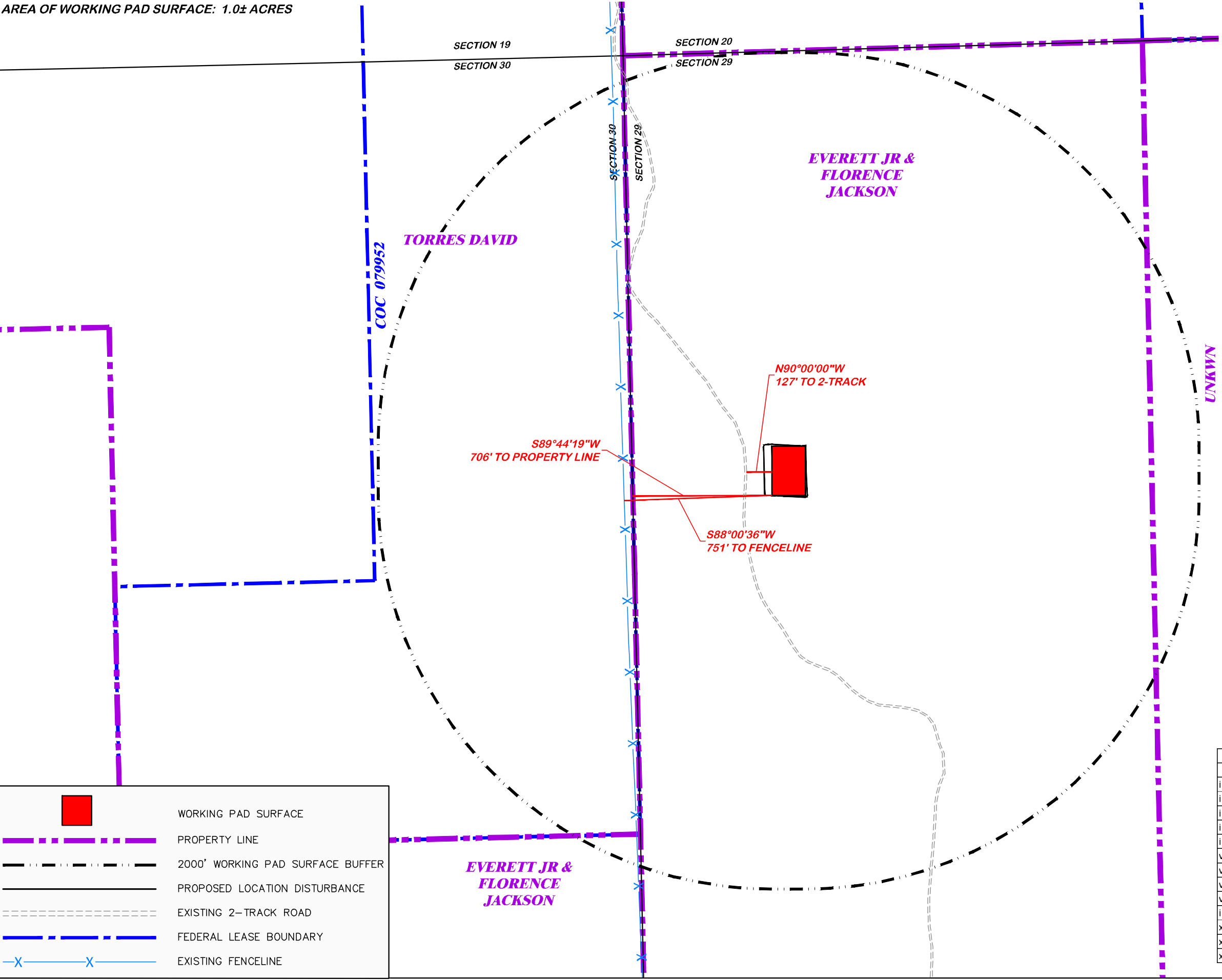
5000500

SCALE FEET

BEFORE DIGGING  
CALL FOR  
UTILITY LINE LOCATION

PAD LOCATION:

LAT: N 37.403592  
LONG: W 103.490913



WORKING PAD SURFACE

PROPERTY LINE

2000' WORKING PAD SURFACE BUFFER

PROPOSED LOCATION DISTURBANCE

EXISTING 2-TRACK ROAD

FEDERAL LEASE BOUNDARY

EXISTING FENCELINE

LOCATION DRAWING FEATURES 304b(7)A	
FEATURE	DISTANCE
i BUILDING	5280'+ SE
i BUILDING UNITS	5280'+ SE
ii PUBLICLY MAINTAINED ROADS AND TRAILS	5280'+ N
iii FENCES	751' W
iv ABOVE GROUND UTILITIES	5280'+ NW
v RAILROADS	5280'+ NW
vi PIPELINES	5280'+ N
vii MINES	5280'+ S
viii OIL AND GAS WELLS AND PRODUCTION FACILITIES	5280'+ N
ix INJECTION WELLS	5280'+ N
x PLUGGED OIL AND GAS WELLS	5280'+ N
xi KNOWN WATER WELLS	4094' NE
xii KNOWN SEWERS WITH MANHOLES	5280'+ N

LOCATION DRAWING

BNL (ENTERPRISE) INC.  
JACKSON 29 SWNW 3054  
SWNW, SECTION 29, T.30 S., R. 54 W., 6th P.M.,  
LAS ANIMAS COUNTY, COLORADO

DRG

RIFFIN & ASSOCIATES, INC.

1414 ELK ST., ROCK SPRINGS, WY 82901

(307) 962-5028

DRAWN: 8/1/22 - EMB

REVISD: 4/9/24 - JMB

UPDATED TABLE

SCALE: 1" = 500'

DRG JOB No. 22225

304b(7)A LOC DWG