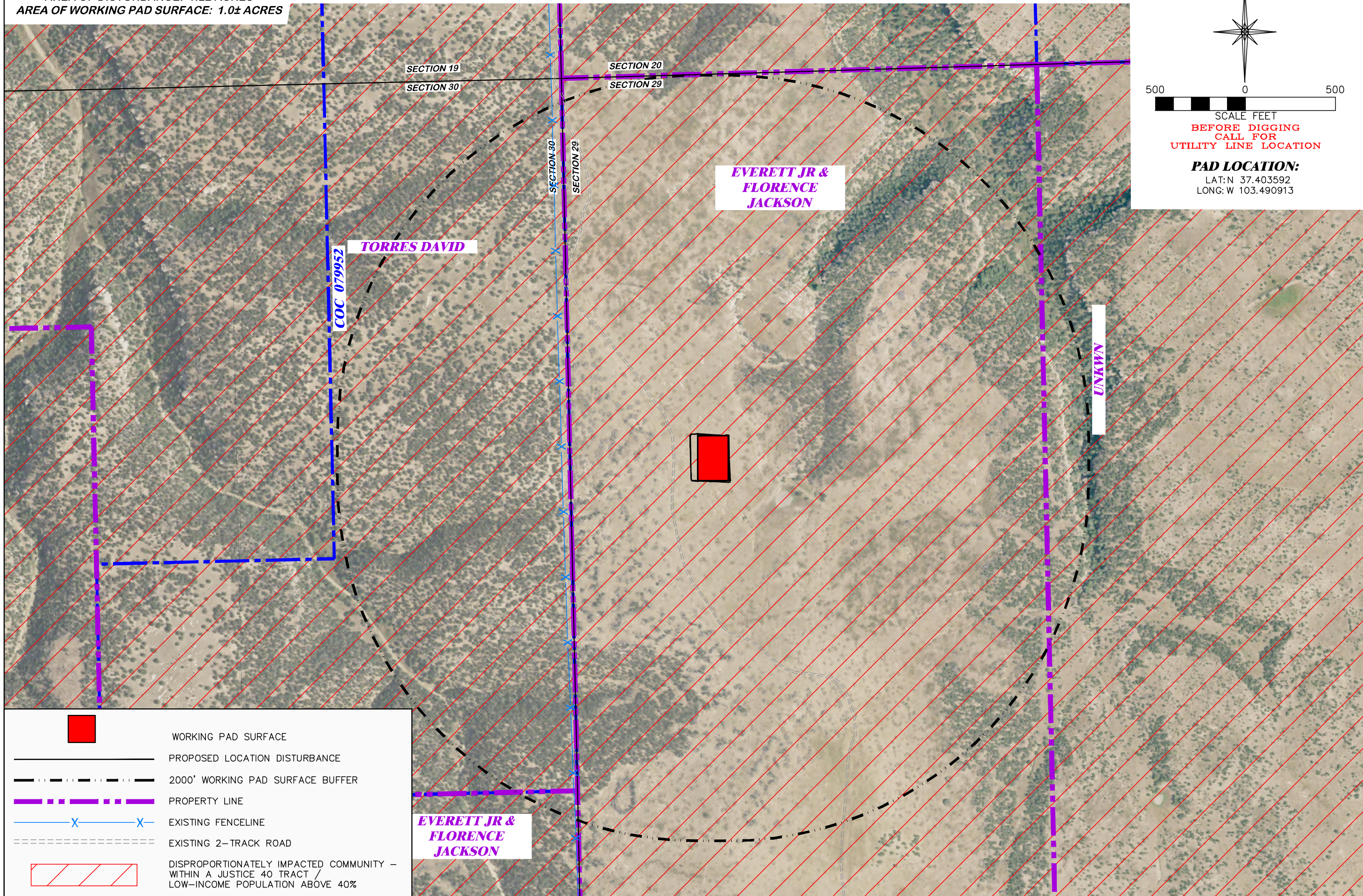


UNGRADED ELEVATION: 5539.8'
 FINAL ELEVATION: 5538.6'
 AREA OF DISTURBANCE: 1.2± ACRES
 AREA OF WORKING PAD SURFACE: 1.0± ACRES

JACKSON 29 SWNW 3054

SCALE FEET
 BEFORE DIGGING
 CALL FOR
 UTILITY LINE LOCATION

PAD LOCATION:
 LAT: N 37.403592
 LONG: W 103.490913



- WORKING PAD SURFACE
- PROPOSED LOCATION DISTURBANCE
- 2000' WORKING PAD SURFACE BUFFER
- PROPERTY LINE
- EXISTING FENCELINE
- EXISTING 2-TRACK ROAD
- DISPROPORTIONATELY IMPACTED COMMUNITY - WITHIN A JUSTICE 40 TRACT / LOW-INCOME POPULATION ABOVE 40%

DISPROPORTIONATELY IMPACTED COMMUNITIES MAP

BNL (ENTERPRISE) INC.
 JACKSON 29 SWNW 3054
 SWNW, SECTION 29, T.30 S., R. 54 W., 6th P.M.,
 LAS ANIMAS COUNTY, COLORADO

DRG RIFFIN & ASSOCIATES, INC.
 1414 ELK ST., ROCK SPRINGS, WY 82901
 (307) 962-5028

DRAWN: 8/1/22 - EMB
 REVISED: 4/19/24 - JMB

SCALE: 1" = 500'
 DRG JOB No. 22225
 304b(7)J DIC MAP

ADDED MAP