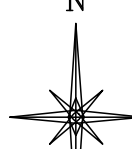


UNGRADED ELEVATION: 5532.7'
 FINAL ELEVATION: 5531.9'
 AREA OF DISTURBANCE: 1.2± ACRES
 AREA OF WORKING PAD SURFACE: 1.0± ACRES

JACKSON 27 SWSE 3054

N

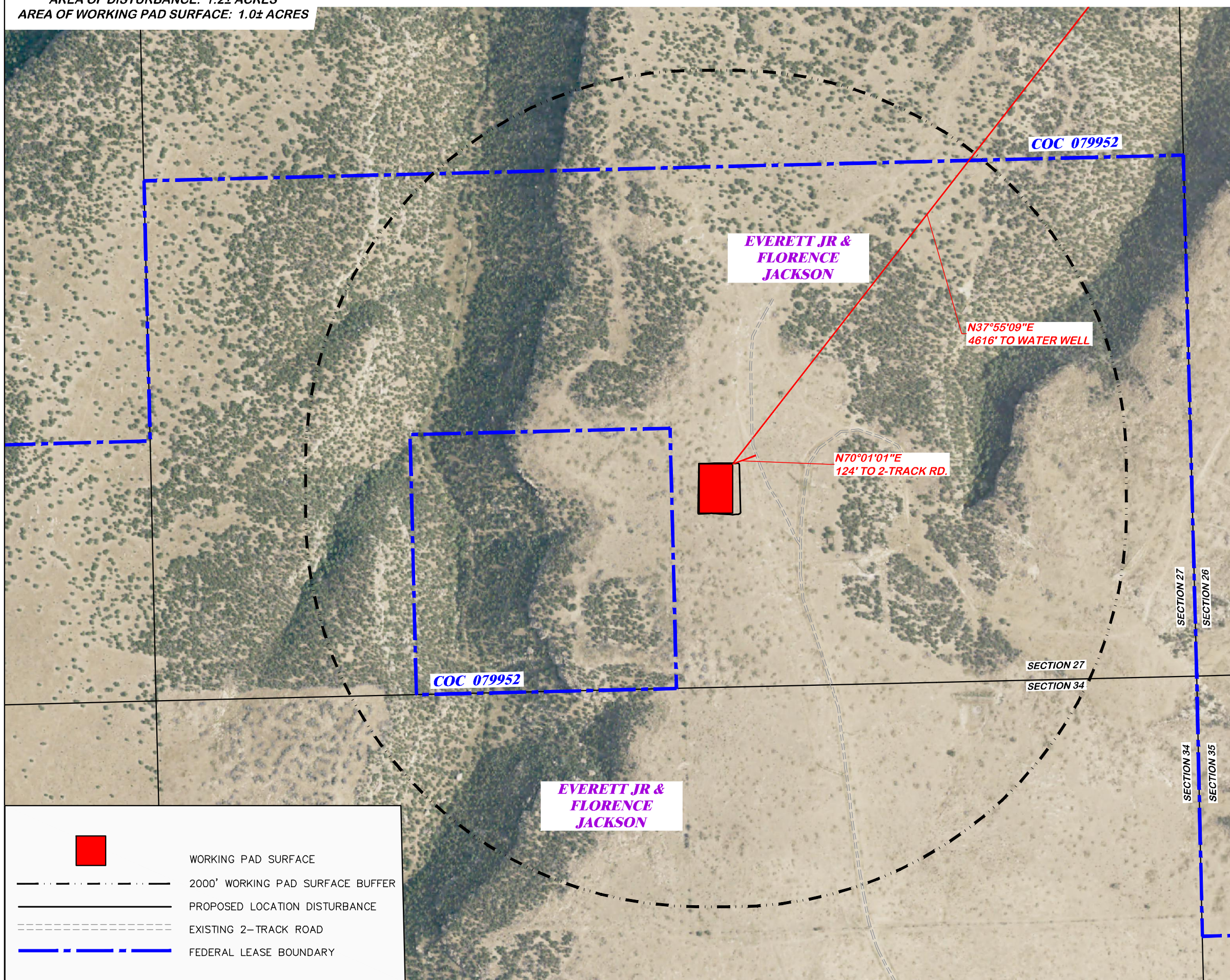
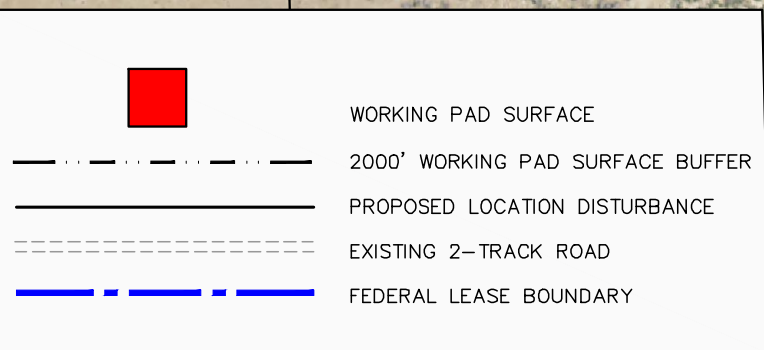


500 0 500

SCALE FEET

BEFORE DIGGING
CALL FOR
UTILITY LINE LOCATION

PAD LOCATION:
 LAT: N 37.397895
 LONG: W 103.447426

- WORKING PAD SURFACE
- 2000' WORKING PAD SURFACE BUFFER
- PROPOSED LOCATION DISTURBANCE
- EXISTING 2-TRACK ROAD
- FEDERAL LEASE BOUNDARY

LOCATION DRAWING

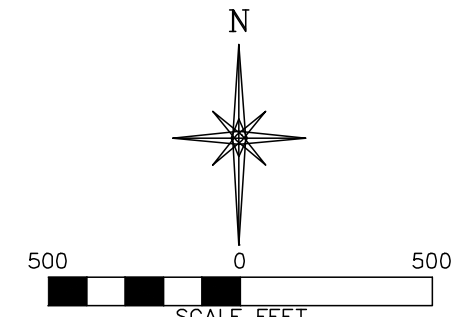
BNL (ENTERPRISE) INC.
JACKSON 27 SWSE 3054
SWSE, SECTION 27, T.30 S., R.54 W., 6th P.M.,
LAS ANIMAS COUNTY, COLORADO


DRG RIFFIN & ASSOCIATES, INC.
 1414 ELK ST., ROCK SPRINGS, WY 82901
 (307) 862-5028
 DRAWN: 6/29/22 - EMB SCALE: 1" = 500'
 REVISED: 4/18/24 - JMB DRG JOB No. 22224
 UPDATED TABLE 304b(7)A LOC AERIAL

LOCATION DRAWING FEATURES 304b(7)A	
FEATURE	DISTANCE
i BUILDING	5280'+ SW
i BUILDING UNITS	5280'+ SW
ii PUBLICLY MAINTAINED ROADS AND TRAILS	5280'+ SW
iii FENCES	5280'+ N
iv ABOVE GROUND UTILITIES	5280'+ NW
v RAILROADS	5280'+ NW
vi PIPELINES	5280'+ NW
vii MINES	5280'+ S
viii OIL AND GAS WELLS AND PRODUCTION FACILITIES	5280'+ N
ix INJECTION WELLS	5280'+ N
x PLUGGED OIL AND GAS WELLS	5280'+ N
xi KNOWN WATER WELLS	4616' NE
xii KNOWN SEWERS WITH MANHOLES	5280'+ N

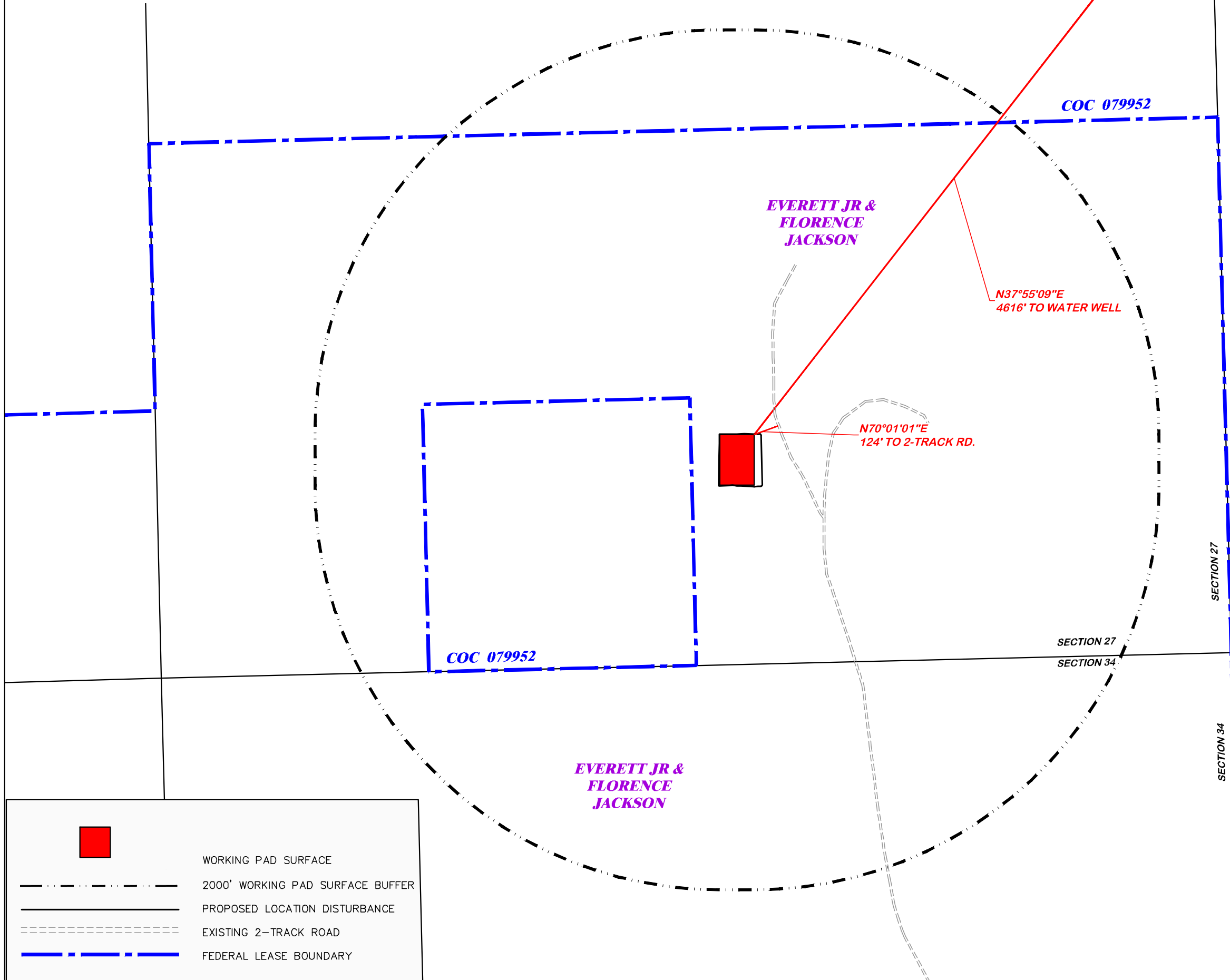
UNGRADED ELEVATION: 5532.7'
 FINAL ELEVATION: 5531.9'
 AREA OF DISTURBANCE: 1.2± ACRES
 AREA OF WORKING PAD SURFACE: 1.0± ACRES

JACKSON 27 SWSE 3054



SCALE FEET
 BEFORE DIGGING
 CALL FOR
 UTILITY LINE LOCATION

PAD LOCATION:
 LAT: N 37.397895
 LONG: W 103.447426



LOCATION DRAWING

BNL (ENTERPRISE) INC.
JACKSON 27 SWSE 3054
SWSE, SECTION 27, T.30 S., R.54 W., 6th P.M.,
LAS ANIMAS COUNTY, COLORADO

DRG RIFFIN & ASSOCIATES, INC.
 1414 ELK ST., ROCK SPRINGS, WY 82901

SCALE: 1" = 500'
 DRAWN: 6/29/22 - EMB
 REVISED: 4/18/24 - JMB
 DRG JOB No. 22224
 304b(7)A LOC DWG

	WORKING PAD SURFACE
	2000' WORKING PAD SURFACE BUFFER
	PROPOSED LOCATION DISTURBANCE
	EXISTING 2-TRACK ROAD
	FEDERAL LEASE BOUNDARY

LOCATION DRAWING FEATURES 304b(7)A	
FEATURE	DISTANCE
i BUILDING	5280'+ SW
i BUILDING UNITS	5280'+ SW
ii PUBLICLY MAINTAINED ROADS AND TRAILS	5280'+ SW
iii FENCES	5280'+ N
iv ABOVE GROUND UTILITIES	5280'+ NW
v RAILROADS	5280'+ NW
vi PIPELINES	5280'+ NW
vii MINES	5280'+ S
viii OIL AND GAS WELLS AND PRODUCTION FACILITIES	5280'+ N
ix INJECTION WELLS	5280'+ N
x PLUGGED OIL AND GAS WELLS	5280'+ N
xi KNOWN WATER WELLS	4616' NE
xii KNOWN SEWERS WITH MANHOLES	5280'+ N

UPDATED TABLE