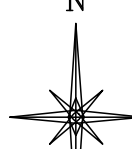


UNGRADED ELEVATION: 5532.7'
 FINAL ELEVATION: 5531.9'
 AREA OF DISTURBANCE: 1.2± ACRES
 AREA OF WORKING PAD SURFACE: 1.0± ACRES

JACKSON 27 SWSE 3054

N

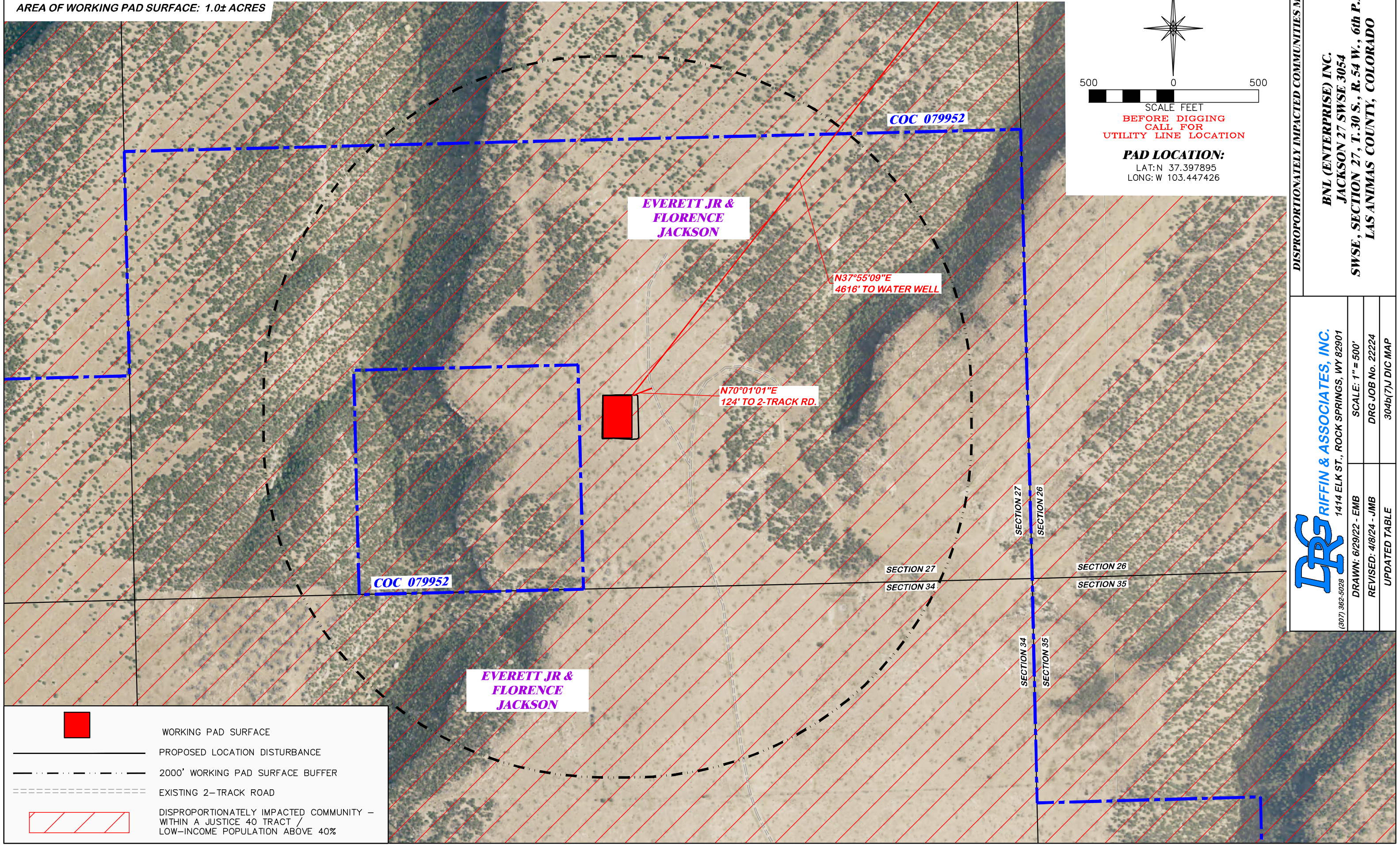






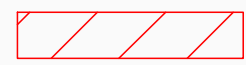
500 0 500

SCALE FEET

BEFORE DIGGING
CALL FOR
UTILITY LINE LOCATION

PAD LOCATION:
 LAT: N 37.397895
 LONG: W 103.447426



	WORKING PAD SURFACE
	PROPOSED LOCATION DISTURBANCE
	2000' WORKING PAD SURFACE BUFFER
	EXISTING 2-TRACK ROAD
	DISPROPORTIONATELY IMPACTED COMMUNITY - WITHIN A JUSTICE 40 TRACT / LOW-INCOME POPULATION ABOVE 40%

DISPROPORTIONATELY IMPACTED COMMUNITIES MAP

BNL (ENTERPRISE) INC.
 JACKSON 27 SWSE 3054
 SWSE, SECTION 27, T.30 S., R.54 W., 6th P.M.,
 LAS ANIMAS COUNTY, COLORADO

DRG RIFFIN & ASSOCIATES, INC.
 1414 ELK ST., ROCK SPRINGS, WY 82901
 (307) 862-5028

DRAWN: 6/29/22 - EMB	SCALE: 1" = 500'
REVISED: 4/8/24 - JMB	DRG JOB No. 22224
UPDATED TABLE	304b(7)J DIC MAP