

13.6 MILES FROM THE STATE HWY 160 INTERSECTION TO THE ACCESS ROAD TURN OFF FROM THE COUNTY ROAD

INTERSECTION STATE HWY 160 & CO. RD. 179

- PROPOSED ACCESS ROAD (3.1 Miles)
- ACCESS ALONG COUNTY ROAD (13.6 MILES)
- STATE HIGHWAY
- DIRT / COUNTY ROAD
- RESIDENTIAL BUILDING UNIT (RBU) WITHIN 2000' OF ACCESS ROUTE

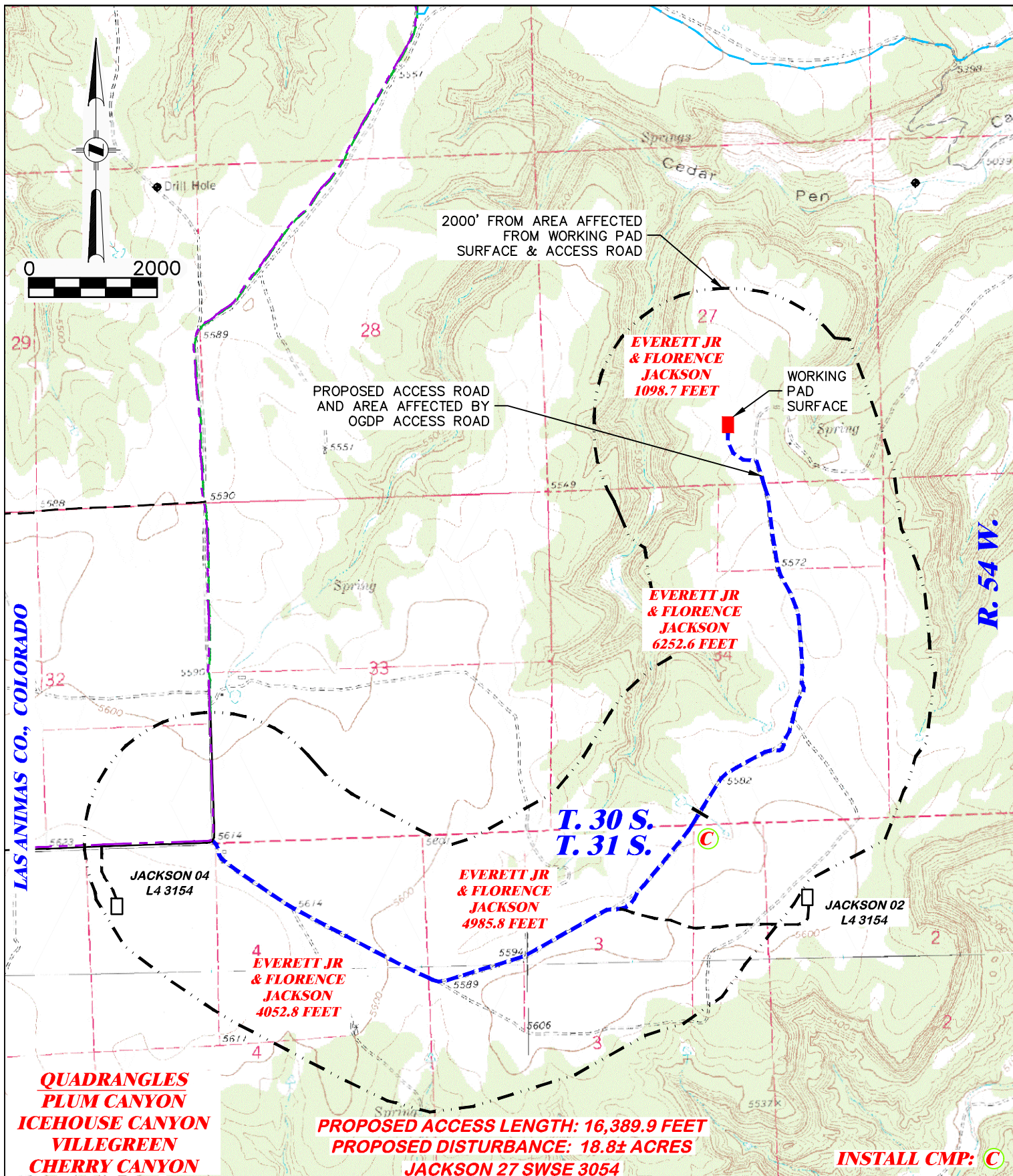
JACKSON 27 SWSE 3054


DRG RIFFIN & ASSOCIATES, INC.
 (307) 362-5028 1414 ELK ST., ROCK SPRINGS, WY 82901

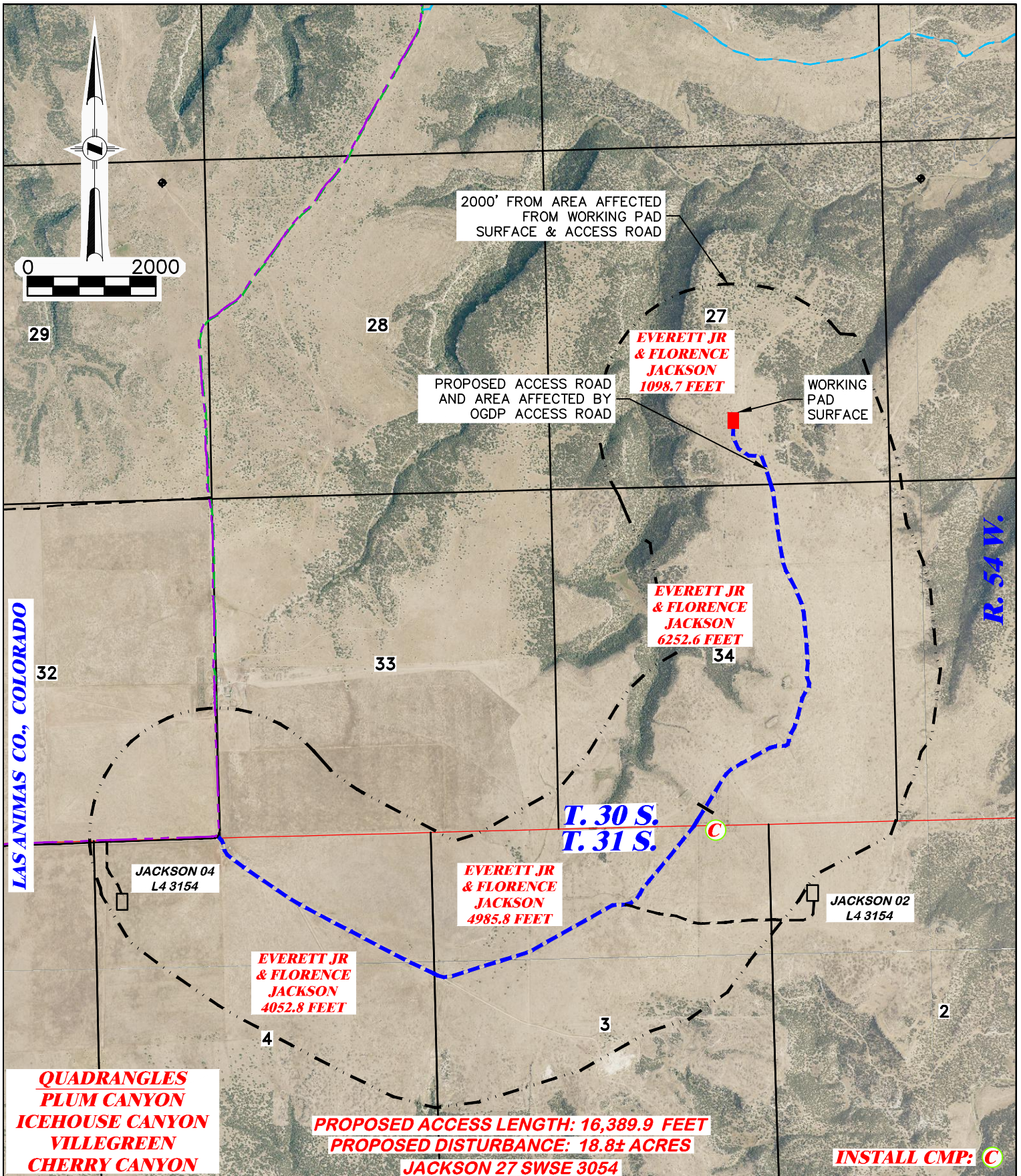
DRAWN: 6/29/22 - EMB	SCALE: 1" = 8000'
REVISED: NA	DRG JOB No. 22224
	304b(7)F ACCESS

PROPOSED ACCESS ROAD MAP

HAUL ROUTE
BNL (ENTERPRISE) INC.
JACKSON 27 SWSE 3054
SWSE, SECTION 27, T. 30 S., R. 54 W., 6th P.M.,
LAS ANIMAS COUNTY, COLORADO



 DRG RIFFIN & ASSOCIATES, INC. (307) 362-5028 1414 ELK ST., ROCK SPRINGS, WY 82901		PROPOSED NEW ACCESS MAP BNL (ENTERPRISE) INC. JACKSON 27 SWSE 3054 SWSE, SECTION 27, T. 30 S., R. 54 W., 6th P.M., LAS ANIMAS COUNTY, COLORADO	
		DRAWN: 6/29/22 - EMB REVISED: NA	SCALE: 1" = 2000' DRG JOB No. 22224
304b(7)F ROAD SHEET 1 OF 2		PROPOSED ACCESS LENGTH: 16,389.9 FEET PROPOSED DISTURBANCE: 18.8± ACRES JACKSON 27 SWSE 3054	



<p>DRG RIFFIN & ASSOCIATES, INC. (307) 362-5028 1414 ELK ST., ROCK SPRINGS, WY 82901</p>		<p>PROPOSED NEW ACCESS MAP BNL (ENTERPRISE) INC. JACKSON 27 SWSE 3054 SWSE, SECTION 27, T. 30 S., R. 54 W., 6th P.M., LAS ANIMAS COUNTY, COLORADO</p>	
		<p>DRAWN: 6/29/22 - EMB</p>	<p>SCALE: 1" = 2000'</p>
<p>REVISED: NA</p>	<p>DRG JOB No. 22224</p>	<p>304b(7)F ROAD SHEET 2 OF 2</p>	