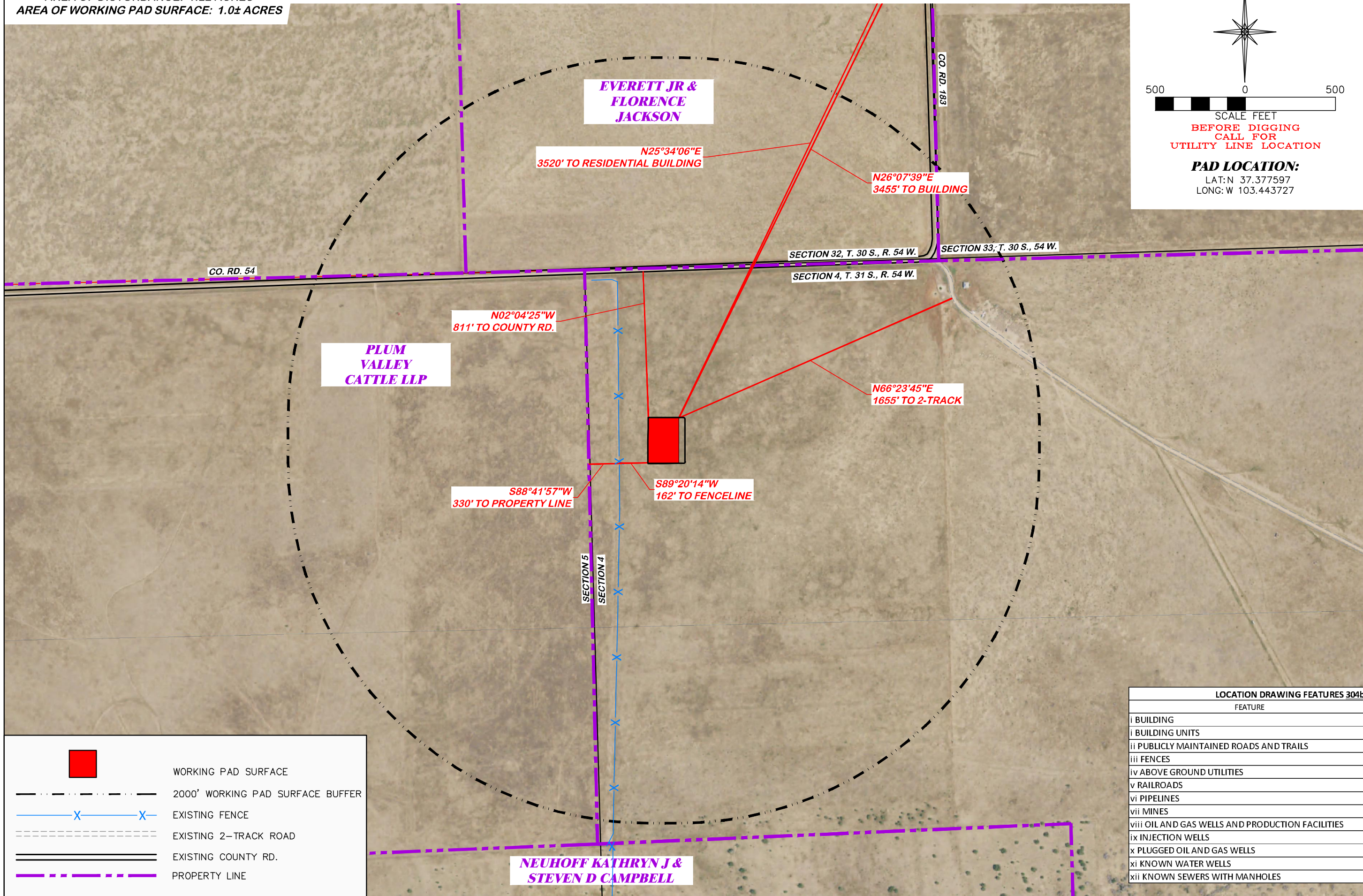


UNGRADED ELEVATION: 5630.4'
 FINAL ELEVATION: 5629.7'
 AREA OF DISTURBANCE: 1.2± ACRES
 AREA OF WORKING PAD SURFACE: 1.0± ACRES

JACKSON 04 L4 3154

SCALE FEET
 BEFORE DIGGING
 CALL FOR
 UTILITY LINE LOCATION

PAD LOCATION:
 LAT: N 37.377597
 LONG: W 103.443727



- WORKING PAD SURFACE
- 2000' WORKING PAD SURFACE BUFFER
- EXISTING FENCE
- EXISTING 2-TRACK ROAD
- EXISTING COUNTY RD.
- PROPERTY LINE

LOCATION DRAWING

BNL (ENTERPRISE) INC.
 JACKSON 04 L4 3154
 LOT 4, SECTION 4, T. 31 S., R. 54 W., 6th P.M.,
 LAS ANIMAS COUNTY, COLORADO

DRG RIFFIN & ASSOCIATES, INC.
 1414 ELK ST., ROCK SPRINGS, WY 82901
 (307) 862-5028

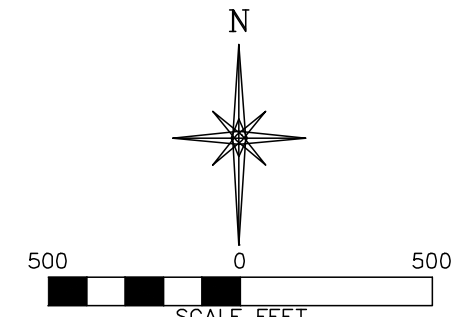
DRAWN: 8/25/2022 - DWB
 REVISED: 4/18/24 - JMB
 SCALE: 1" = 500'
 DRG JOB No. 22268
 304b(7)A LOC AERIAL

UPDATED TABLE

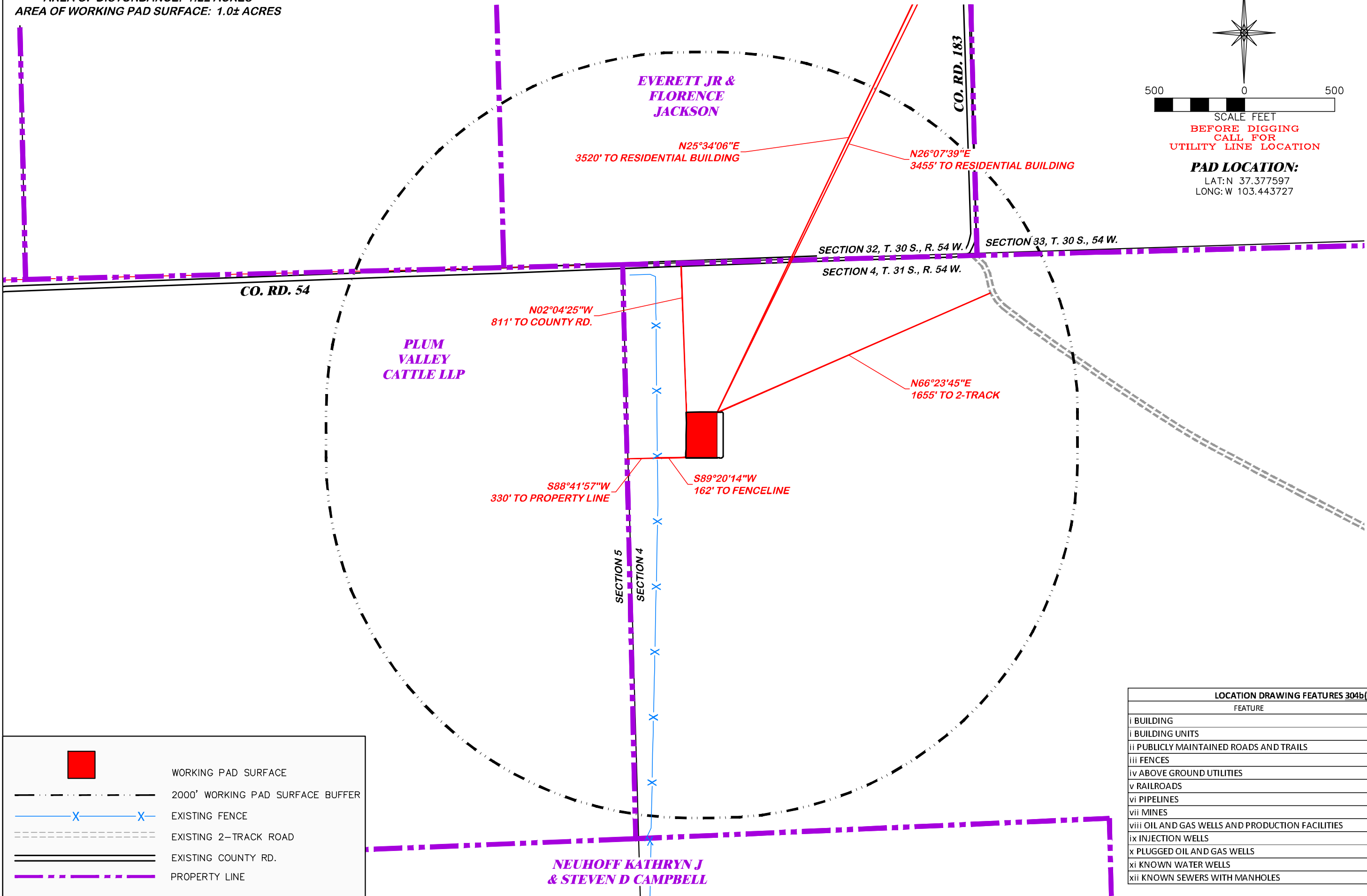
| LOCATION DRAWING FEATURES 304b(7)A | |
|--|-----------|
| FEATURE | DISTANCE |
| i BUILDING | 3455' NE |
| i BUILDING UNITS | 3520' NE |
| ii PUBLICLY MAINTAINED ROADS AND TRAILS | 811' N |
| iii FENCES | 162' W |
| iv ABOVE GROUND UTILITIES | 3520' NE |
| v RAILROADS | 5280'+ NW |
| vi PIPELINES | 5280'+ E |
| vii MINES | 5280'+ SW |
| viii OIL AND GAS WELLS AND PRODUCTION FACILITIES | 5280'+ N |
| ix INJECTION WELLS | 5280'+ N |
| x PLUGGED OIL AND GAS WELLS | 5280'+ N |
| xi KNOWN WATER WELLS | 4406' SW |
| xii KNOWN SEWERS WITH MANHOLES | 5280'+ N |

UNGRADED ELEVATION: 5630.4'
 FINAL ELEVATION: 5629.7'
 AREA OF DISTURBANCE: 1.2± ACRES
 AREA OF WORKING PAD SURFACE: 1.0± ACRES

JACKSON 04 L4 3154



PAD LOCATION:
 LAT: N 37.377597
 LONG: W 103.443727

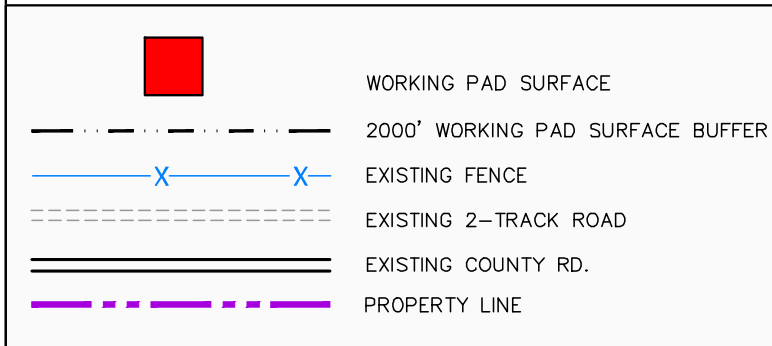


LOCATION DRAWING

BNL (ENTERPRISE) INC.
 JACKSON 04 L4 3154
 LOT 4, SECTION 4, T. 31 S., R. 54 W., 6th P.M.,
 LAS ANIMAS COUNTY, COLORADO

DRG RIFFIN & ASSOCIATES, INC.
 1414 ELK ST., ROCK SPRINGS, WY 82901

SCALE: 1" = 500'
 DRAWN: 8/25/2022 - DWB
 DRG JOB No. 22268
 REVISED: 4/18/24 - JMB
 304b(7)A LOC DWG
 UPDATED TABLE



| LOCATION DRAWING FEATURES 304b(7)A | |
|--|-----------|
| FEATURE | DISTANCE |
| i BUILDING | 3455' NE |
| i BUILDING UNITS | 3520' NE |
| ii PUBLICLY MAINTAINED ROADS AND TRAILS | 811' N |
| iii FENCES | 162' W |
| iv ABOVE GROUND UTILITIES | 3520' NE |
| v RAILROADS | 5280'+ NW |
| vi PIPELINES | 5280'+ E |
| vii MINES | 5280'+ SW |
| viii OIL AND GAS WELLS AND PRODUCTION FACILITIES | 5280'+ N |
| ix INJECTION WELLS | 5280'+ N |
| x PLUGGED OIL AND GAS WELLS | 5280'+ N |
| xi KNOWN WATER WELLS | 4406' SW |
| xii KNOWN SEWERS WITH MANHOLES | 5280'+ N |

NEUHOFF KATHRYN J
 & STEVEN D CAMPBELL