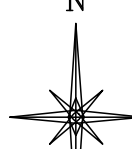


UNGRADED ELEVATION: 5630.4'
 FINAL ELEVATION: 5629.7'
 AREA OF DISTURBANCE: 1.2± ACRES
 AREA OF WORKING PAD SURFACE: 1.0± ACRES

JACKSON 04 L4 3154

N

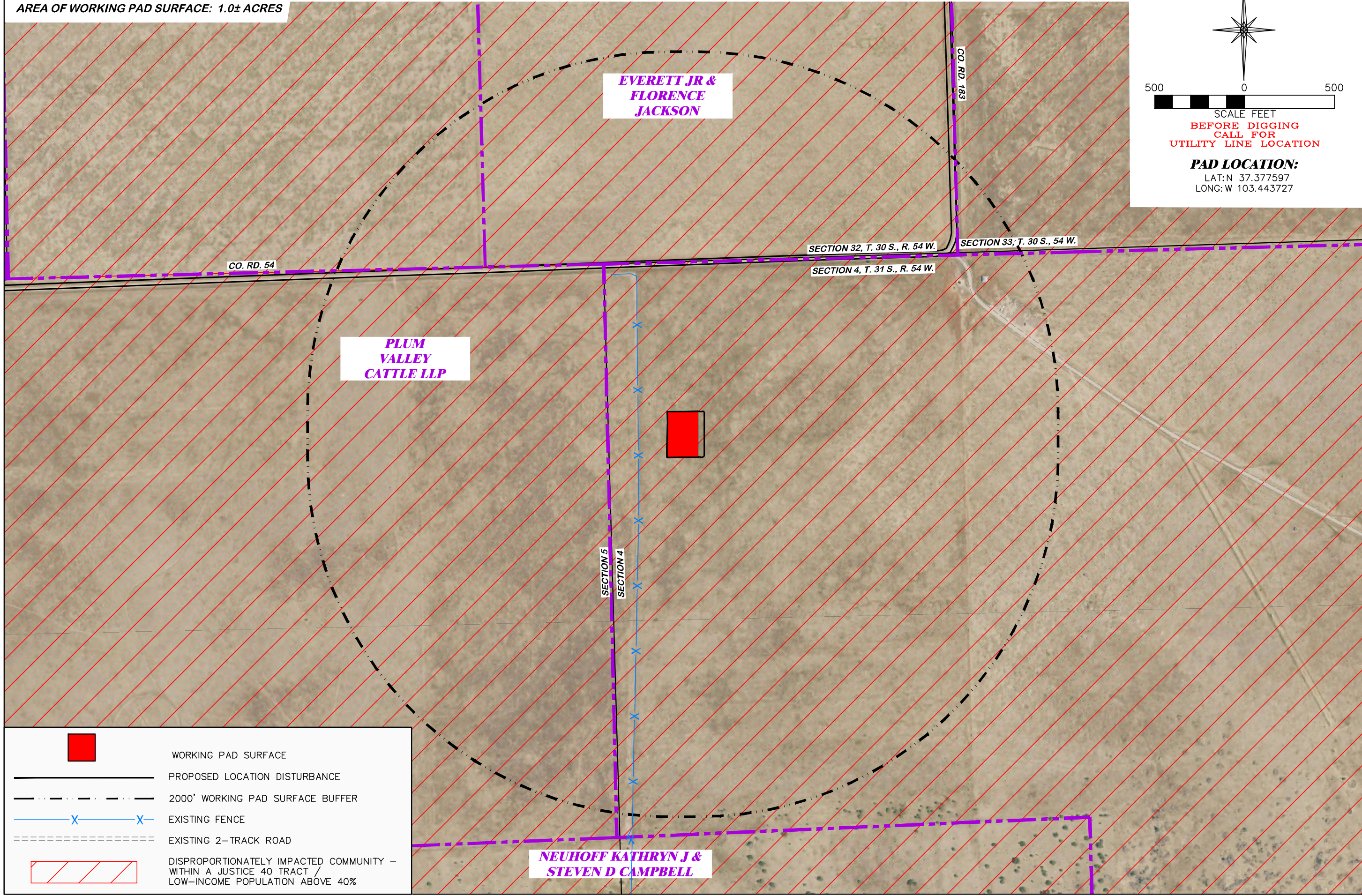



500 0 500


SCALE FEET


BEFORE DIGGING
CALL FOR
UTILITY LINE LOCATION


PAD LOCATION:
 LAT: N 37.377597
 LONG: W 103.443727





 WORKING PAD SURFACE

 PROPOSED LOCATION DISTURBANCE

 2000' WORKING PAD SURFACE BUFFER

 EXISTING FENCE

 EXISTING 2-TRACK ROAD

 DISPROPORTIONATELY IMPACTED COMMUNITY -
 WITHIN A JUSTICE 40 TRACT /
 LOW-INCOME POPULATION ABOVE 40%

DISPROPORTIONATELY IMPACTED COMMUNITY MAP

BNL (ENTERPRISE) INC.
 JACKSON 04 L4 3154
 LOT 4, SECTION 4, T. 31 S., R. 54 W., 6th P.M.,
 LAS ANIMAS COUNTY, COLORADO

DRG RIFFIN & ASSOCIATES, INC.
 1414 ELK ST., ROCK SPRINGS, WY 82901
 (307) 862-5028

SCALE: 1" = 500'

DRAWN: 8/25/2022 - DWB

REVISED: 4/18/24 - JMB

DRG JOB No. 22268

304b(7)J DIC MAP

ADDED MAP