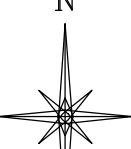


UNGRADED ELEVATION: 5612.1'
 FINAL ELEVATION: 5611.3'
 AREA OF DISTURBANCE: 1.2± ACRES
 AREA OF WORKING PAD SURFACE: 1.0± ACRES

JACKSON 02 L4 3154

N

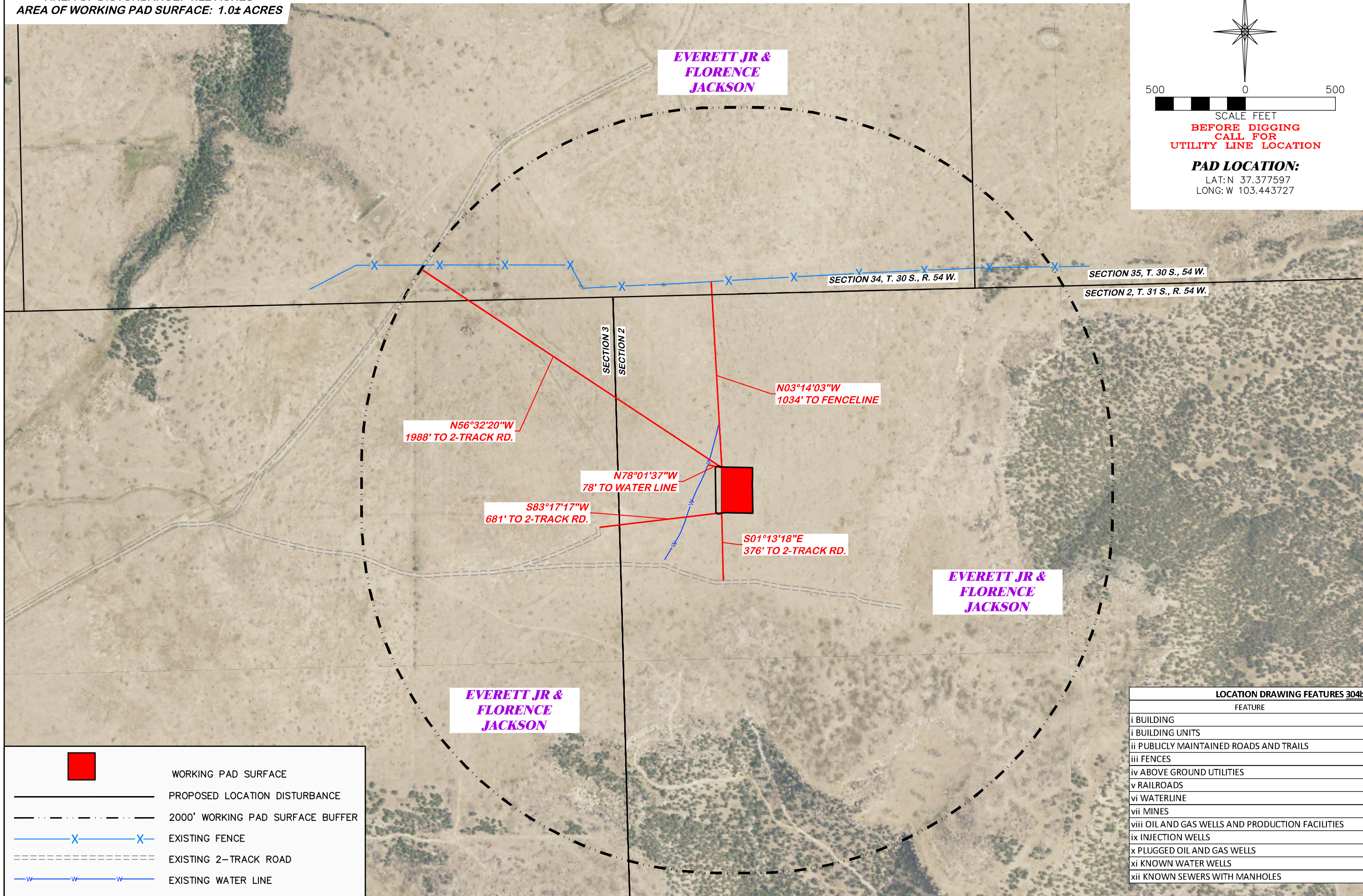


500 0 500

SCALE FEET

**BEFORE DIGGING
CALL FOR
UTILITY LINE LOCATION**







PAD LOCATION:
 LAT: N 37.377597
 LONG: W 103.443727



LOCATION DRAWING

BNL (ENTERPRISE) INC.
 JACKSON 02 L4 3154
 LOT 4, SECTION 2, T. 31 S., R. 54 W., 6th P.M.,
 LAS ANIMAS COUNTY, COLORADO

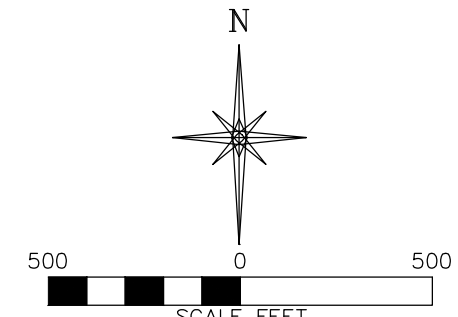

DRG RIFFIN & ASSOCIATES, INC.
 1414 ELK ST., ROCK SPRINGS, WY 82901
 (307) 362-5028
 DRAWN: 8/8/2022 - DWB
 REVISED: 4/5/24 - JMB
 SCALE: 1" = 500'
 DRG JOB No. 22267
 304b(7)A LOC AERIAL
 UPDATED TABLE

	WORKING PAD SURFACE
	PROPOSED LOCATION DISTURBANCE
	2000' WORKING PAD SURFACE BUFFER
	EXISTING FENCE
	EXISTING 2-TRACK ROAD
	EXISTING WATER LINE

LOCATION DRAWING FEATURES 304b(7)A	
FEATURE	DISTANCE
i BUILDING	5280'+ NW
i BUILDING UNITS	5280'+ NW
ii PUBLICLY MAINTAINED ROADS AND TRAILS	5280'+ W
iii FENCES	1034' NW
iv ABOVE GROUND UTILITIES	5280'+ NW
v RAILROADS	5280'+ NW
vi WATERLINE	78' NW
vii MINES	5280'+ W
viii OIL AND GAS WELLS AND PRODUCTION FACILITIES	5280'+ N
ix INJECTION WELLS	5280'+ W
x PLUGGED OIL AND GAS WELLS	5280'+ E
xi KNOWN WATER WELLS	4829' SE
xii KNOWN SEWERS WITH MANHOLES	5280'+ N

UNGRADED ELEVATION: 5612.1'
 FINAL ELEVATION: 5611.3'
 AREA OF DISTURBANCE: 1.2± ACRES
 AREA OF WORKING PAD SURFACE: 1.0± ACRES

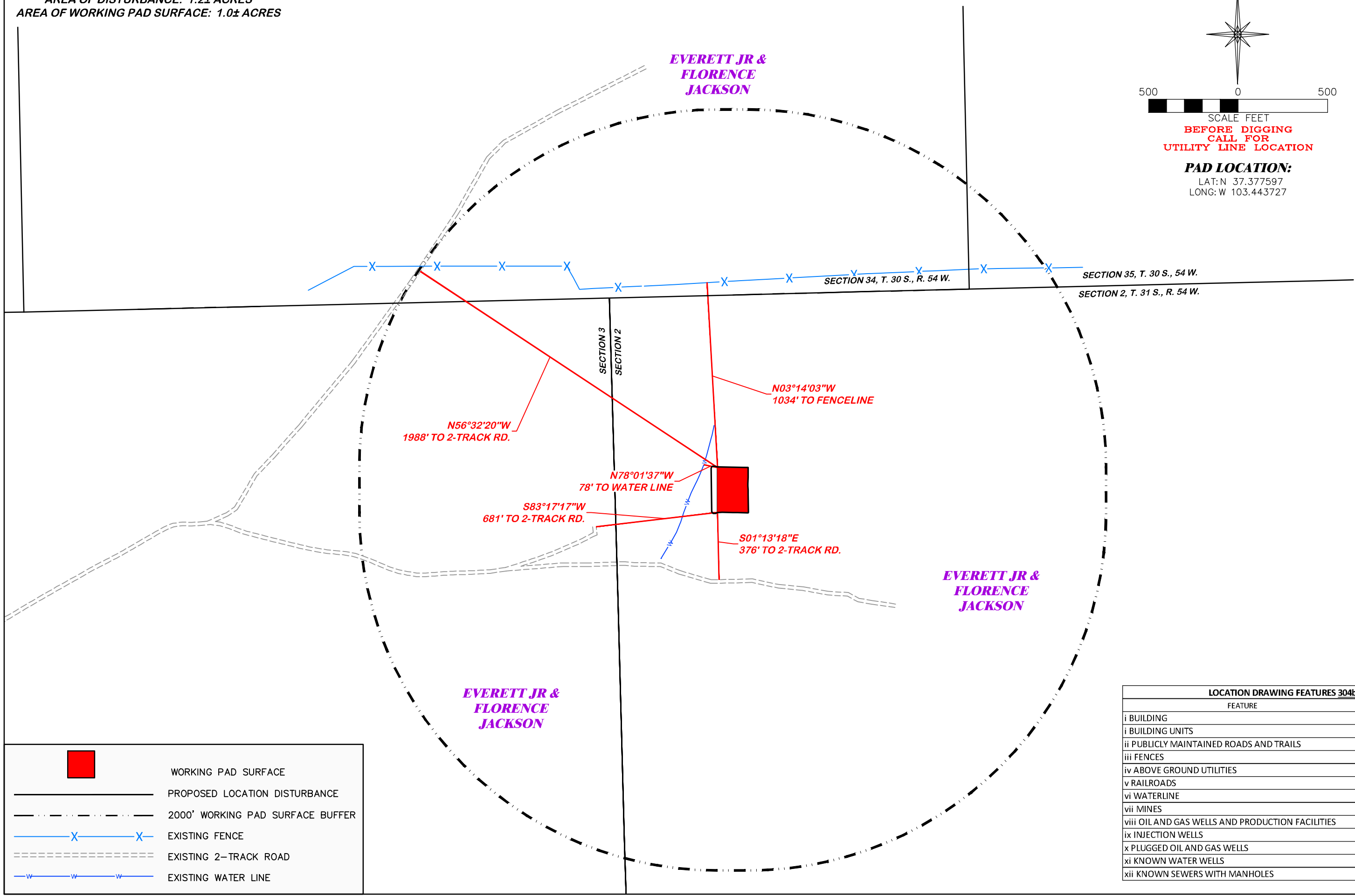
JACKSON 02 L4 3154



PAD LOCATION:
 LAT: N 37.377597
 LONG: W 103.443727

LOCATION DRAWING

BNL (ENTERPRISE) INC.
 JACKSON 02 L4 3154
 LOT 4, SECTION 2, T. 31 S., R. 54 W., 6th P.M.,
 LAS ANIMAS COUNTY, COLORADO



N56°32'20"W
1988' TO 2-TRACK RD.

N78°01'37"W
78' TO WATER LINE

S83°17'17"W
681' TO 2-TRACK RD.

N03°14'03"W
1034' TO FENCELINE

S01°13'18"E
376' TO 2-TRACK RD.

DRG RIFFIN & ASSOCIATES, INC.
 1414 ELK ST., ROCK SPRINGS, WY 82901
 (307) 862-5028

SCALE: 1" = 500'

DRAWN: 8/8/2022 - DWB
 REVISED: 4/5/24 - JMB

DRG JOB No. 22267
 304b(7)A LOC DWG

UPDATED TABLE

	WORKING PAD SURFACE
	PROPOSED LOCATION DISTURBANCE
	2000' WORKING PAD SURFACE BUFFER
	EXISTING FENCE
	EXISTING 2-TRACK ROAD
	EXISTING WATER LINE

LOCATION DRAWING FEATURES 304b(7)A	
FEATURE	DISTANCE
i BUILDING	5280'+ NW
i BUILDING UNITS	5280'+ NW
ii PUBLICLY MAINTAINED ROADS AND TRAILS	5280'+ W
iii FENCES	1034' NW
iv ABOVE GROUND UTILITIES	5280'+ NW
v RAILROADS	5280'+ NW
vi WATERLINE	78' NW
vii MINES	5280'+ W
viii OIL AND GAS WELLS AND PRODUCTION FACILITIES	5280'+ N
ix INJECTION WELLS	5280'+ W
x PLUGGED OIL AND GAS WELLS	5280'+ E
xi KNOWN WATER WELLS	4829' SE
xii KNOWN SEWERS WITH MANHOLES	5280'+ N