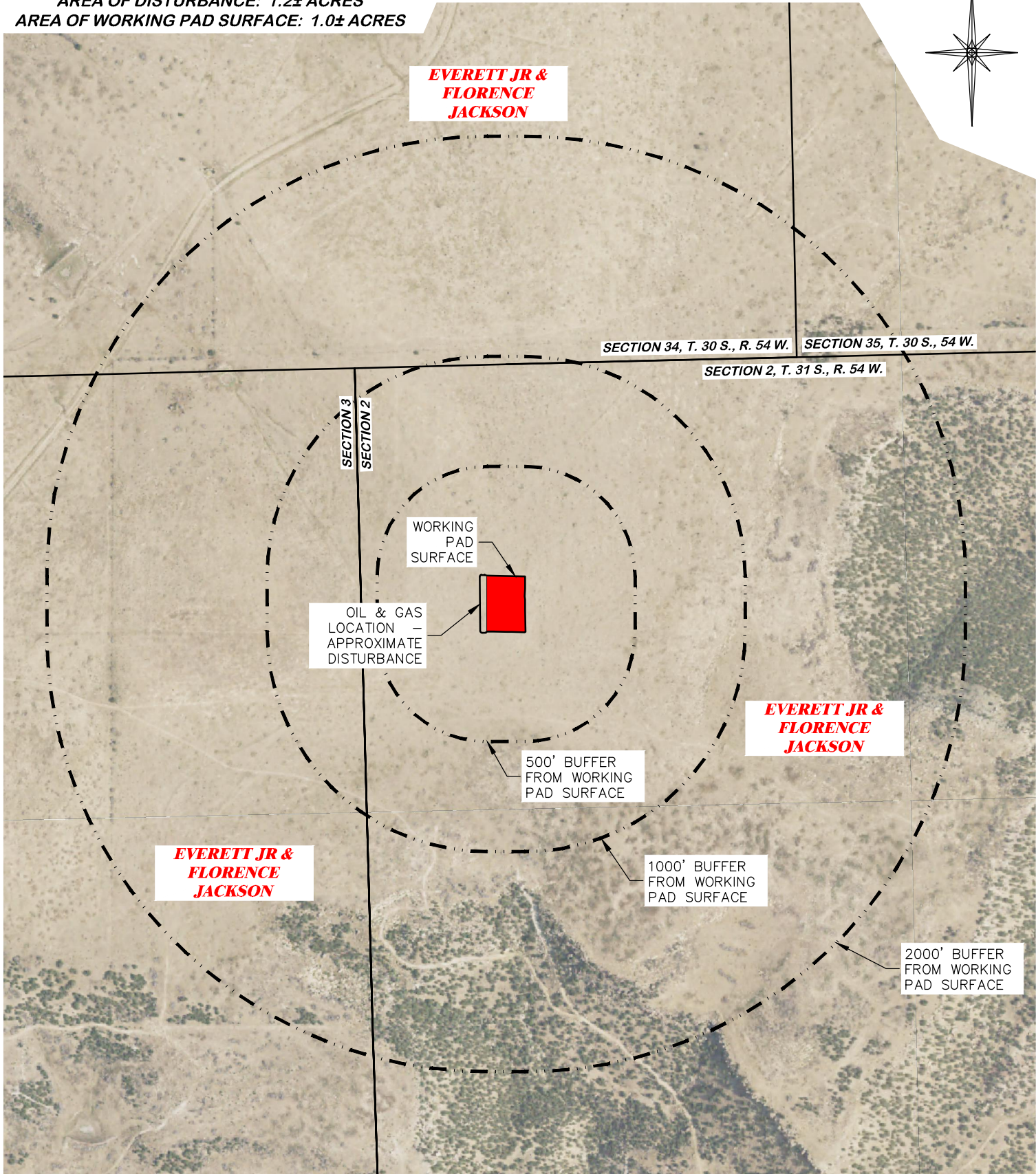
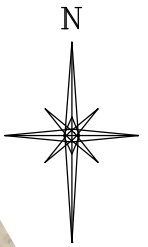


UNGRADED ELEVATION: 5612.1'  
 FINAL ELEVATION: 5611.3'  
 AREA OF DISTURBANCE: 1.2± ACRES  
 AREA OF WORKING PAD SURFACE: 1.0± ACRES

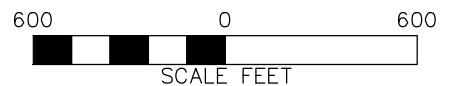


**CULTURAL ITEMS:**  
 MEASURED FROM NEAREST EDGE OF THE PROPOSED WORKING PAD SURFACE

|                         |           |
|-------------------------|-----------|
| BUILDING                | 5280'+ NW |
| RESIDENTIAL BUILDING    | 5280'+ NW |
| HIGH OCCUPANCY BUILDING | 5280'+ N  |
| DOAA                    | 5280'+ N  |
| PUBLIC ROAD             | 5280'+ W  |
| ABOVE GROUND UTILITY    | 5280'+ NW |
| RAILROAD                | 5280'+ NW |
| PROPERTY LINE           | 4850' SW  |
| SCHOOL FACILITY         | 5280'+ N  |
| SCHOOL PROPERTY LINE    | 5280'+ N  |
| CHILDCARE FACILITY      | 5280'+ N  |
| CHILDCARE PROPERTY LINE | 5280'+ N  |
| DI COMMUNITY            | 0'        |

**CULTURAL FEATURE INFORMATION**

| PRODUCTION FEATURE      | 0-500 FEET | 501 - 1,000 FEET | 1,001 - 2,000 FEET |
|-------------------------|------------|------------------|--------------------|
|                         | NUMBER     | NUMBER           | NUMBER             |
| BUILDING                | 0          | 0                | 0                  |
| RESIDENTIAL BUILDING    | 0          | 0                | 0                  |
| HIGH OCCUPANCY BUILDING | 0          | 0                | 0                  |
| SCHOOL PROPERTIES       | 0          | 0                | 0                  |
| SCHOOL FACILITIES       | 0          | 0                | 0                  |
| DOAA                    | 0          | 0                | 0                  |



**JACKSON 02 L4 3154**

**DRG RIFFIN & ASSOCIATES, INC.**  
 (307) 362-5028 1414 ELK ST., ROCK SPRINGS, WY 82901

|                              |                          |
|------------------------------|--------------------------|
| <b>DRAWN: 8/8/2022 - DWB</b> | <b>SCALE: 1" = 600'</b>  |
| <b>REVISED: 4/5/24 - JMB</b> | <b>DRG JOB No. 22267</b> |
| <b>UPDATED TABLE</b>         | <b>304b(3)C CULTURAL</b> |

**CULTURAL DISTANCES DRAWING**

**CULTURAL DISTANCES  
 BNL (ENTERPRISE) INC.  
 JACKSON 02 L4 3154  
 LOT 4, SECTION 2, T. 31 S., R. 54 W., 6th P.M.,  
 LAS ANIMAS COUNTY, COLORADO**