

GMT Exploration

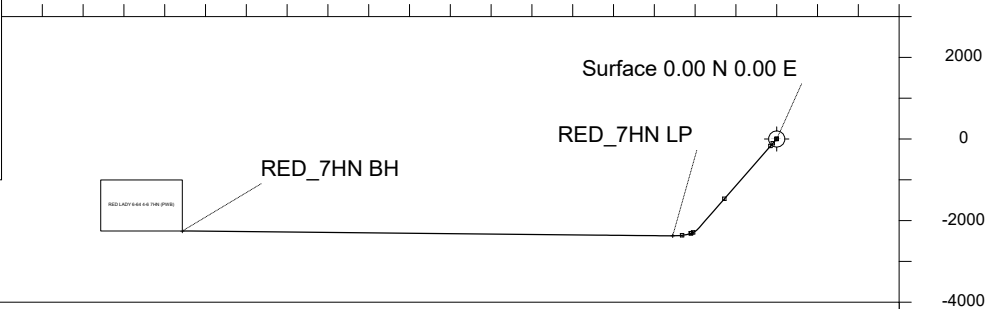
Location DJ Basin Slot RED LADY 6-64 4-6 3HN
Field Elbert County Wells Well RED LADY 6-64 4-6 7HN
Installation Ragged 6-64 4 Pad Wellbore RED LADY 6-64 4-6 7HN (PWB)

Created by vinnie.wolfram
Date plotted 12-Jun-2024
Plot reference is RED LADY 6-64 4-6 7HN (PWB).
Ref wellpath is RED LADY 6-64 4-6 7HN (PWB).
Coordinates are in Feet reference RED LADY 6-64 4-6 3HN.
True Vertical Depths are reference Rig Datum.
Measured Depths are reference Rig Datum.
Rig Datum: Planned Datum #1
Rig Datum to Mean Sea Level: 6013.60 ft.
Plot North is aligned to TRUE North.

Scale 1 cm = 1000 ft

East (Feet) ->

-18000 -16000 -14000 -12000 -10000 -8000 -6000 -4000 -2000 0 2000

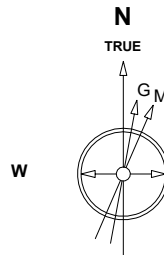
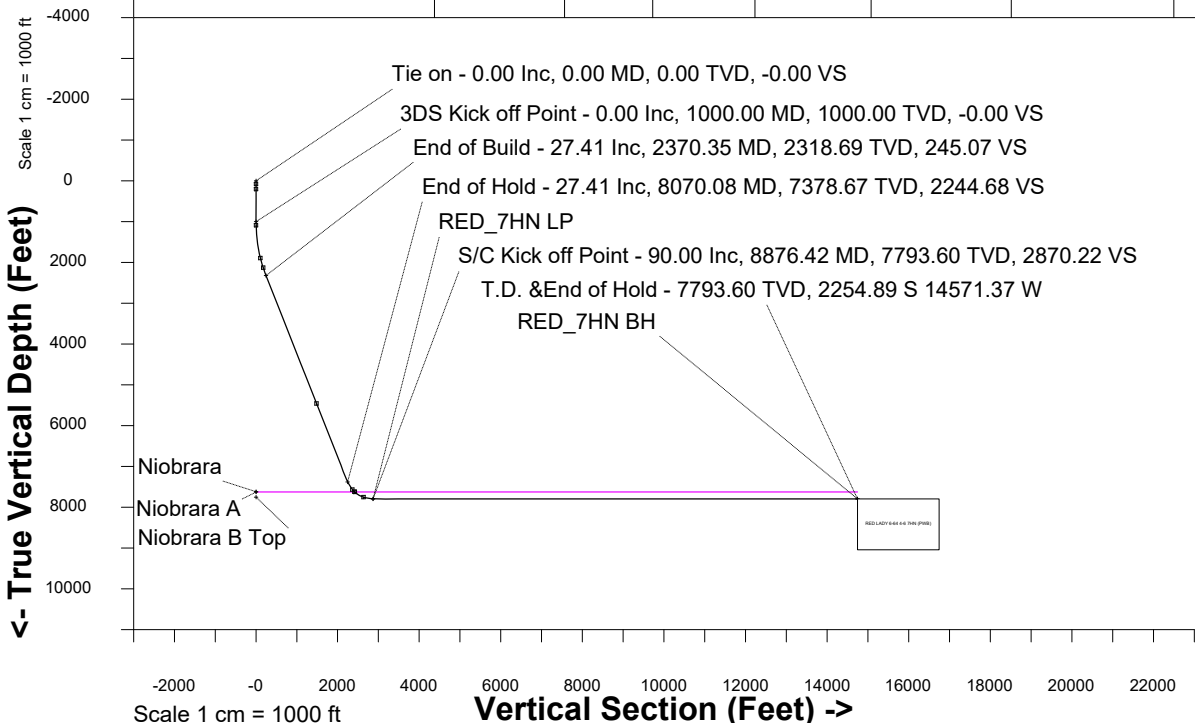


WELL PROFILE DATA

Point	MD	Inc	Azi	TVD	North	East	deg/100ft	V. Sect
Tie on	0.00	0.00	0.00	0.00	S 0.00	W 0.00		-0.00
KOP	1000.00	0.00	221.17	1000.00	S 0.00	W 0.00	0.00	-0.00
End of Build	2370.35	27.41	221.17	2318.69	S 242.06	W 211.65	2.00	245.07
End of Hold	8070.08	27.41	221.17	7378.67	S 2217.16	W 1938.63	0.00	2244.68
Target RED_7HN LP	8876.42	90.00	270.57	7793.60	S 2374.48	W 2547.61	9.00	2870.22
T.D. & Target RED... BH	20900.77	90.00	270.57	7793.60	S 2254.89	W 14571.37	0.00	14744.60

<- North(Feet)

Scale 1 cm = 1000 ft



Jan-3-2023
IGRF-13 Dip: 65.95 deg Field: 51361.9 nT
Lat: N39 33 44.1720 Long: W104 33 5.5800 Elev: 6016.70 ft
Magnetic North is 7.50 deg East of TRUE North
To correct azimuth from Magnetic to TRUE add 7.50 deg

Azimuth 261.51 with reference 0.00 N, 0.00 E from RED LADY 6-64 4-6 3HN

Wellhead Details							
Name	Latitude	Longitude	Northing	Easting	North	East	Slot Elevation Above Ground
RED LADY 6-64 4-6 3HN	N39 33 43.7724	W104 33 4.4352	1084785.7116	3267502.1297	40.43S	89.66E	0.00

Declination		
Date	Source	Time
Jan-3-2023	IGRF-13	10:05

Installation Details						
Name	Installation Position (Latitude)	Installation Position (Longitude)	Northing	Easting	Coord System Name	North Alignment
Ragged 6-64 4 Pad	N39 33 44.1720	W104 33 5.5800	1084825.1840	3267412.0415	NAD83 Colorado State Planes, North Zone, US Foot	True

Summary Wellpath								
MD[ft]	Inc[deg]	Azi[deg]	TVD[ft]	Vertical Depth SS	North[ft]	East[ft]	Dogleg [deg/100ft]	Vertical Section[ft]
0.00	0.00	0.00	0.00	-6013.60	0.00N	0.00E		0.00
1000.00	0.00	221.17	1000.00	-5013.60	0.00N	0.00E	==>	0.00
2370.35	27.41	221.17	2318.69	-3694.91	242.06S	211.65W	2.00	245.07
8070.08	27.41	221.17	7378.67	1365.07	2217.16S	1938.63W	==>	2244.68
8876.42	90.00	270.57	7793.60	1780.00	2374.48S	2547.61W	9.00	2870.22
20900.77	90.00	270.57	7793.60	1780.00	2254.89S	14571.37W	==>	14744.60

Interpolated Wellpath								
MD[ft]	Inc[deg]	Azi[deg]	TVD[ft]	North[ft]	East[ft]	Dogleg [deg/100ft]	Vertical Section[ft]	All Station Comments
0.00	0.00	0.00	0.00	0.00N	0.00E		0.00	Tie on, Slot Datum
77.00	0.00	0.00	77.00	0.00N	0.00E	==>	0.00	Lower Dawson
100.00	0.00	0.00	100.00	0.00N	0.00E	==>	0.00	
200.00	0.00	0.00	200.00	0.00N	0.00E	==>	0.00	
202.00	0.00	0.00	202.00	0.00N	0.00E	==>	0.00	Denver
300.00	0.00	0.00	300.00	0.00N	0.00E	==>	0.00	
400.00	0.00	0.00	400.00	0.00N	0.00E	==>	0.00	
500.00	0.00	0.00	500.00	0.00N	0.00E	==>	0.00	
600.00	0.00	0.00	600.00	0.00N	0.00E	==>	0.00	
700.00	0.00	0.00	700.00	0.00N	0.00E	==>	0.00	
800.00	0.00	0.00	800.00	0.00N	0.00E	==>	0.00	
900.00	0.00	0.00	900.00	0.00N	0.00E	==>	0.00	
1000.00	0.00	221.17	1000.00	0.00N	0.00E	==>	0.00	3DS Kick off Point
1089.01	1.78	221.17	1089.00	1.04S	0.91W	2.00	1.05	Upper Arapahoe
1100.00	2.00	221.17	1099.98	1.31S	1.15W	2.00	1.33	
1200.00	4.00	221.17	1199.84	5.25S	4.59W	2.00	5.32	
1300.00	6.00	221.17	1299.45	11.81S	10.33W	2.00	11.96	
1400.00	8.00	221.17	1398.70	20.99S	18.35W	2.00	21.25	
1500.00	10.00	221.17	1497.47	32.76S	28.65W	2.00	33.17	
1600.00	12.00	221.17	1595.62	47.13S	41.21W	2.00	47.71	
1700.00	14.00	221.17	1693.06	64.06S	56.01W	2.00	64.86	
1800.00	16.00	221.17	1789.64	83.54S	73.05W	2.00	84.58	
1900.00	18.00	221.17	1885.27	105.55S	92.29W	2.00	106.86	
1909.19	18.18	221.17	1894.00	107.70S	94.17W	2.00	109.04	Laramie - Fox Hills
2000.00	20.00	221.17	1979.82	130.06S	113.72W	2.00	131.68	
2100.00	22.00	221.17	2073.17	157.04S	137.31W	2.00	158.99	
2159.39	23.19	221.17	2128.00	174.22S	152.33W	2.00	176.38	Pierre Shale (Base of Fox Hills)
2200.00	24.00	221.17	2165.21	186.45S	163.03W	2.00	188.77	
2300.00	26.00	221.17	2255.84	218.27S	190.85W	2.00	220.97	
2370.35	27.41	221.17	2318.69	242.06S	211.65W	2.00	245.07	End of Build
2400.00	27.41	221.17	2345.01	252.34S	220.64W	==>	255.47	
2500.00	27.41	221.17	2433.78	286.99S	250.94W	==>	290.55	

All data is in Feet unless otherwise stated
Coordinates are from Slot MD's are from Rig and TVD's are from Rig (Planned Datum #1 6013.6ft above Mean Sea Level)
Vertical Section is from 0.00N 0.00E on azimuth 261.51 degrees
Bottom hole distance is 14744.81 Feet on azimuth 261.20 degrees from Wellhead
Calculation method uses Minimum Curvature method
Prepared by
Date Printed: 12-Jun-2024

Interpolated Wellpath								
MD[ft]	Inc[deg]	Azi[deg]	TVD[ft]	North[ft]	East[ft]	Dogleg [deg/100ft]	Vertical Section[ft]	All Station Comments
2600.00	27.41	221.17	2522.56	321.64S	281.24W	==>	325.64	
2700.00	27.41	221.17	2611.34	356.30S	311.54W	==>	360.72	
2800.00	27.41	221.17	2700.11	390.95S	341.83W	==>	395.80	
2900.00	27.41	221.17	2788.89	425.60S	372.13W	==>	430.88	
3000.00	27.41	221.17	2877.66	460.25S	402.43W	==>	465.97	
3100.00	27.41	221.17	2966.44	494.91S	432.73W	==>	501.05	
3200.00	27.41	221.17	3055.22	529.56S	463.03W	==>	536.13	
3300.00	27.41	221.17	3143.99	564.21S	493.33W	==>	571.21	
3400.00	27.41	221.17	3232.77	598.86S	523.63W	==>	606.30	
3500.00	27.41	221.17	3321.54	633.52S	553.93W	==>	641.38	
3600.00	27.41	221.17	3410.32	668.17S	584.23W	==>	676.46	
3700.00	27.41	221.17	3499.09	702.82S	614.53W	==>	711.54	
3800.00	27.41	221.17	3587.87	737.47S	644.83W	==>	746.63	
3900.00	27.41	221.17	3676.65	772.13S	675.13W	==>	781.71	
4000.00	27.41	221.17	3765.42	806.78S	705.43W	==>	816.79	
4100.00	27.41	221.17	3854.20	841.43S	735.72W	==>	851.88	
4200.00	27.41	221.17	3942.97	876.08S	766.02W	==>	886.96	
4300.00	27.41	221.17	4031.75	910.74S	796.32W	==>	922.04	
4400.00	27.41	221.17	4120.53	945.39S	826.62W	==>	957.12	
4500.00	27.41	221.17	4209.30	980.04S	856.92W	==>	992.21	
4600.00	27.41	221.17	4298.08	1014.69S	887.22W	==>	1027.29	
4700.00	27.41	221.17	4386.85	1049.35S	917.52W	==>	1062.37	
4800.00	27.41	221.17	4475.63	1084.00S	947.82W	==>	1097.45	
4900.00	27.41	221.17	4564.41	1118.65S	978.12W	==>	1132.54	
5000.00	27.41	221.17	4653.18	1153.30S	1008.42W	==>	1167.62	
5100.00	27.41	221.17	4741.96	1187.96S	1038.72W	==>	1202.70	
5200.00	27.41	221.17	4830.73	1222.61S	1069.02W	==>	1237.78	
5300.00	27.41	221.17	4919.51	1257.26S	1099.32W	==>	1272.87	
5400.00	27.41	221.17	5008.28	1291.91S	1129.61W	==>	1307.95	
5500.00	27.41	221.17	5097.06	1326.57S	1159.91W	==>	1343.03	
5600.00	27.41	221.17	5185.84	1361.22S	1190.21W	==>	1378.12	
5700.00	27.41	221.17	5274.61	1395.87S	1220.51W	==>	1413.20	
5800.00	27.41	221.17	5363.39	1430.52S	1250.81W	==>	1448.28	
5900.00	27.41	221.17	5452.16	1465.18S	1281.11W	==>	1483.36	
5906.57	27.41	221.17	5458.00	1467.45S	1283.10W	==>	1485.67	Sussex Sandstone
6000.00	27.41	221.17	5540.94	1499.83S	1311.41W	==>	1518.45	
6100.00	27.41	221.17	5629.72	1534.48S	1341.71W	==>	1553.53	
6200.00	27.41	221.17	5718.49	1569.13S	1372.01W	==>	1588.61	
6300.00	27.41	221.17	5807.27	1603.79S	1402.31W	==>	1623.69	
6400.00	27.41	221.17	5896.04	1638.44S	1432.61W	==>	1658.78	
6500.00	27.41	221.17	5984.82	1673.09S	1462.91W	==>	1693.86	
6600.00	27.41	221.17	6073.60	1707.74S	1493.21W	==>	1728.94	
6700.00	27.41	221.17	6162.37	1742.40S	1523.50W	==>	1764.02	
6800.00	27.41	221.17	6251.15	1777.05S	1553.80W	==>	1799.11	
6900.00	27.41	221.17	6339.92	1811.70S	1584.10W	==>	1834.19	
7000.00	27.41	221.17	6428.70	1846.35S	1614.40W	==>	1869.27	
7100.00	27.41	221.17	6517.47	1881.01S	1644.70W	==>	1904.36	
7200.00	27.41	221.17	6606.25	1915.66S	1675.00W	==>	1939.44	
7300.00	27.41	221.17	6695.03	1950.31S	1705.30W	==>	1974.52	
7400.00	27.41	221.17	6783.80	1984.96S	1735.60W	==>	2009.60	
7500.00	27.41	221.17	6872.58	2019.62S	1765.90W	==>	2044.69	
7600.00	27.41	221.17	6961.35	2054.27S	1796.20W	==>	2079.77	
7700.00	27.41	221.17	7050.13	2088.92S	1826.50W	==>	2114.85	
7800.00	27.41	221.17	7138.91	2123.57S	1856.80W	==>	2149.93	
7900.00	27.41	221.17	7227.68	2158.23S	1887.10W	==>	2185.02	
8000.00	27.41	221.17	7316.46	2192.88S	1917.40W	==>	2220.10	
8070.08	27.41	221.17	7378.67	2217.16S	1938.63W	==>	2244.68	End of Hold
8100.00	29.11	225.57	7405.03	2227.44S	1948.36W	9.00	2255.83	
8200.00	35.62	237.24	7489.53	2260.30S	1990.31W	9.00	2302.17	
8300.00	42.95	245.55	7566.93	2290.22S	2045.93W	9.00	2361.59	
8301.48	43.06	245.65	7568.01	2290.64S	2046.84W	9.00	2362.56	Sharon Springs

All data is in Feet unless otherwise stated
Coordinates are from Slot MD's are from Rig and TVD's are from Rig (Planned Datum #1 6013.6ft above Mean Sea Level)
Vertical Section is from 0.00N 0.00E on azimuth 261.51 degrees
Bottom hole distance is 14744.81 Feet on azimuth 261.20 degrees from Wellhead
Calculation method uses Minimum Curvature method
Prepared by
Date Printed: 12-Jun-2024

Interpolated Wellpath								
MD[ft]	Inc[deg]	Azi[deg]	TVD[ft]	North[ft]	East[ft]	Dogleg [deg/100ft]	Vertical Section[ft]	All Station Comments
								Shale
8373.25	48.61	250.26	7618.01	2309.85S	2094.55W	9.00	2412.58	Niobrara
8388.55	49.81	251.15	7628.01	2313.67S	2105.49W	9.00	2423.96	Niobrara A
8400.00	50.72	251.78	7635.33	2316.47S	2113.84W	9.00	2432.63	
8500.00	58.76	256.75	7693.04	2338.41S	2192.37W	9.00	2513.55	
8600.00	66.96	260.93	7738.63	2355.50S	2279.60W	9.00	2602.34	
8639.37	70.21	262.43	7753.01	2360.80S	2315.86W	9.00	2638.98	Niobrara B Top
8700.00	75.25	264.62	7771.00	2367.31S	2373.37W	9.00	2696.82	
8800.00	83.60	268.04	7789.34	2373.56S	2471.37W	9.00	2794.67	
8876.42	90.00	270.57	7793.60	2374.48S	2547.61W	9.00	2870.22	S/C Kick off Point/Target, RED_7HN LP
8900.00	90.00	270.57	7793.60	2374.24S	2571.20W	==>	2893.51	
9000.00	90.00	270.57	7793.60	2373.25S	2671.19W	==>	2992.26	
9100.00	90.00	270.57	7793.60	2372.25S	2771.19W	==>	3091.02	
9200.00	90.00	270.57	7793.60	2371.26S	2871.18W	==>	3189.77	
9300.00	90.00	270.57	7793.60	2370.26S	2971.18W	==>	3288.52	
9400.00	90.00	270.57	7793.60	2369.27S	3071.17W	==>	3387.27	
9500.00	90.00	270.57	7793.60	2368.28S	3171.17W	==>	3486.03	
9600.00	90.00	270.57	7793.60	2367.28S	3271.16W	==>	3584.78	
9700.00	90.00	270.57	7793.60	2366.29S	3371.16W	==>	3683.53	
9800.00	90.00	270.57	7793.60	2365.29S	3471.15W	==>	3782.28	
9900.00	90.00	270.57	7793.60	2364.30S	3571.15W	==>	3881.04	
10000.00	90.00	270.57	7793.60	2363.30S	3671.14W	==>	3979.79	
10100.00	90.00	270.57	7793.60	2362.31S	3771.14W	==>	4078.54	
10200.00	90.00	270.57	7793.60	2361.31S	3871.13W	==>	4177.30	
10300.00	90.00	270.57	7793.60	2360.32S	3971.13W	==>	4276.05	
10400.00	90.00	270.57	7793.60	2359.32S	4071.12W	==>	4374.80	
10500.00	90.00	270.57	7793.60	2358.33S	4171.12W	==>	4473.55	
10600.00	90.00	270.57	7793.60	2357.34S	4271.11W	==>	4572.31	
10700.00	90.00	270.57	7793.60	2356.34S	4371.11W	==>	4671.06	
10800.00	90.00	270.57	7793.60	2355.35S	4471.10W	==>	4769.81	
10900.00	90.00	270.57	7793.60	2354.35S	4571.10W	==>	4868.56	
11000.00	90.00	270.57	7793.60	2353.36S	4671.09W	==>	4967.32	
11100.00	90.00	270.57	7793.60	2352.36S	4771.09W	==>	5066.07	
11200.00	90.00	270.57	7793.60	2351.37S	4871.08W	==>	5164.82	
11300.00	90.00	270.57	7793.60	2350.37S	4971.08W	==>	5263.58	
11400.00	90.00	270.57	7793.60	2349.38S	5071.07W	==>	5362.33	
11500.00	90.00	270.57	7793.60	2348.38S	5171.07W	==>	5461.08	
11600.00	90.00	270.57	7793.60	2347.39S	5271.06W	==>	5559.83	
11700.00	90.00	270.57	7793.60	2346.40S	5371.06W	==>	5658.59	
11800.00	90.00	270.57	7793.60	2345.40S	5471.05W	==>	5757.34	
11900.00	90.00	270.57	7793.60	2344.41S	5571.05W	==>	5856.09	
12000.00	90.00	270.57	7793.60	2343.41S	5671.04W	==>	5954.84	
12100.00	90.00	270.57	7793.60	2342.42S	5771.04W	==>	6053.60	
12200.00	90.00	270.57	7793.60	2341.42S	5871.03W	==>	6152.35	
12300.00	90.00	270.57	7793.60	2340.43S	5971.03W	==>	6251.10	
12400.00	90.00	270.57	7793.60	2339.43S	6071.02W	==>	6349.86	
12500.00	90.00	270.57	7793.60	2338.44S	6171.02W	==>	6448.61	
12600.00	90.00	270.57	7793.60	2337.44S	6271.01W	==>	6547.36	
12700.00	90.00	270.57	7793.60	2336.45S	6371.01W	==>	6646.11	
12800.00	90.00	270.57	7793.60	2335.46S	6471.00W	==>	6744.87	
12900.00	90.00	270.57	7793.60	2334.46S	6571.00W	==>	6843.62	
13000.00	90.00	270.57	7793.60	2333.47S	6670.99W	==>	6942.37	
13100.00	90.00	270.57	7793.60	2332.47S	6770.99W	==>	7041.12	
13200.00	90.00	270.57	7793.60	2331.48S	6870.98W	==>	7139.88	
13300.00	90.00	270.57	7793.60	2330.48S	6970.98W	==>	7238.63	
13400.00	90.00	270.57	7793.60	2329.49S	7070.97W	==>	7337.38	
13500.00	90.00	270.57	7793.60	2328.49S	7170.97W	==>	7436.14	
13600.00	90.00	270.57	7793.60	2327.50S	7270.96W	==>	7534.89	
13700.00	90.00	270.57	7793.60	2326.50S	7370.96W	==>	7633.64	
13800.00	90.00	270.57	7793.60	2325.51S	7470.95W	==>	7732.39	

All data is in Feet unless otherwise stated
Coordinates are from Slot MD's are from Rig (Planned Datum #1 6013.6ft above Mean Sea Level)
Vertical Section is from 0.00N 0.00E on azimuth 261.51 degrees
Bottom hole distance is 14744.81 Feet on azimuth 261.20 degrees from Wellhead
Calculation method uses Minimum Curvature method
Prepared by
Date Printed: 12-Jun-2024

Interpolated Wellpath								
MD[ft]	Inc[deg]	Azi[deg]	TVD[ft]	North[ft]	East[ft]	Dogleg [deg/100ft]	Vertical Section[ft]	All Station Comments
13900.00	90.00	270.57	7793.60	2324.52S	7570.95W	==>	7831.15	
14000.00	90.00	270.57	7793.60	2323.52S	7670.94W	==>	7929.90	
14100.00	90.00	270.57	7793.60	2322.53S	7770.94W	==>	8028.65	
14200.00	90.00	270.57	7793.60	2321.53S	7870.93W	==>	8127.40	
14300.00	90.00	270.57	7793.60	2320.54S	7970.93W	==>	8226.16	
14400.00	90.00	270.57	7793.60	2319.54S	8070.92W	==>	8324.91	
14500.00	90.00	270.57	7793.60	2318.55S	8170.92W	==>	8423.66	
14600.00	90.00	270.57	7793.60	2317.55S	8270.91W	==>	8522.42	
14700.00	90.00	270.57	7793.60	2316.56S	8370.91W	==>	8621.17	
14800.00	90.00	270.57	7793.60	2315.56S	8470.90W	==>	8719.92	
14900.00	90.00	270.57	7793.60	2314.57S	8570.90W	==>	8818.67	
15000.00	90.00	270.57	7793.60	2313.58S	8670.89W	==>	8917.43	
15100.00	90.00	270.57	7793.60	2312.58S	8770.89W	==>	9016.18	
15200.00	90.00	270.57	7793.60	2311.59S	8870.88W	==>	9114.93	
15300.00	90.00	270.57	7793.60	2310.59S	8970.88W	==>	9213.68	
15400.00	90.00	270.57	7793.60	2309.60S	9070.87W	==>	9312.44	
15500.00	90.00	270.57	7793.60	2308.60S	9170.87W	==>	9411.19	
15600.00	90.00	270.57	7793.60	2307.61S	9270.86W	==>	9509.94	
15700.00	90.00	270.57	7793.60	2306.61S	9370.86W	==>	9608.70	
15800.00	90.00	270.57	7793.60	2305.62S	9470.85W	==>	9707.45	
15900.00	90.00	270.57	7793.60	2304.62S	9570.85W	==>	9806.20	
16000.00	90.00	270.57	7793.60	2303.63S	9670.84W	==>	9904.95	
16100.00	90.00	270.57	7793.60	2302.64S	9770.84W	==>	10003.71	
16200.00	90.00	270.57	7793.60	2301.64S	9870.83W	==>	10102.46	
16300.00	90.00	270.57	7793.60	2300.65S	9970.83W	==>	10201.21	
16400.00	90.00	270.57	7793.60	2299.65S	10070.82W	==>	10299.96	
16500.00	90.00	270.57	7793.60	2298.66S	10170.82W	==>	10398.72	
16600.00	90.00	270.57	7793.60	2297.66S	10270.81W	==>	10497.47	
16700.00	90.00	270.57	7793.60	2296.67S	10370.81W	==>	10596.22	
16800.00	90.00	270.57	7793.60	2295.67S	10470.81W	==>	10694.98	
16900.00	90.00	270.57	7793.60	2294.68S	10570.80W	==>	10793.73	
17000.00	90.00	270.57	7793.60	2293.68S	10670.80W	==>	10892.48	
17100.00	90.00	270.57	7793.60	2292.69S	10770.79W	==>	10991.23	
17200.00	90.00	270.57	7793.60	2291.70S	10870.79W	==>	11089.99	
17300.00	90.00	270.57	7793.60	2290.70S	10970.78W	==>	11188.74	
17400.00	90.00	270.57	7793.60	2289.71S	11070.78W	==>	11287.49	
17500.00	90.00	270.57	7793.60	2288.71S	11170.77W	==>	11386.24	
17600.00	90.00	270.57	7793.60	2287.72S	11270.77W	==>	11485.00	
17700.00	90.00	270.57	7793.60	2286.72S	11370.76W	==>	11583.75	
17800.00	90.00	270.57	7793.60	2285.73S	11470.76W	==>	11682.50	
17900.00	90.00	270.57	7793.60	2284.73S	11570.75W	==>	11781.26	
18000.00	90.00	270.57	7793.60	2283.74S	11670.75W	==>	11880.01	
18100.00	90.00	270.57	7793.60	2282.75S	11770.74W	==>	11978.76	
18200.00	90.00	270.57	7793.60	2281.75S	11870.74W	==>	12077.51	
18300.00	90.00	270.57	7793.60	2280.76S	11970.73W	==>	12176.27	
18400.00	90.00	270.57	7793.60	2279.76S	12070.73W	==>	12275.02	
18500.00	90.00	270.57	7793.60	2278.77S	12170.72W	==>	12373.77	
18600.00	90.00	270.57	7793.60	2277.77S	12270.72W	==>	12472.52	
18700.00	90.00	270.57	7793.60	2276.78S	12370.71W	==>	12571.28	
18800.00	90.00	270.57	7793.60	2275.78S	12470.71W	==>	12670.03	
18900.00	90.00	270.57	7793.60	2274.79S	12570.70W	==>	12768.78	
19000.00	90.00	270.57	7793.60	2273.79S	12670.70W	==>	12867.54	
19100.00	90.00	270.57	7793.60	2272.80S	12770.69W	==>	12966.29	
19200.00	90.00	270.57	7793.60	2271.81S	12870.69W	==>	13065.04	
19300.00	90.00	270.57	7793.60	2270.81S	12970.68W	==>	13163.79	
19400.00	90.00	270.57	7793.60	2269.82S	13070.68W	==>	13262.55	
19500.00	90.00	270.57	7793.60	2268.82S	13170.67W	==>	13361.30	
19600.00	90.00	270.57	7793.60	2267.83S	13270.67W	==>	13460.05	
19700.00	90.00	270.57	7793.60	2266.83S	13370.66W	==>	13558.80	
19800.00	90.00	270.57	7793.60	2265.84S	13470.66W	==>	13657.56	
19900.00	90.00	270.57	7793.60	2264.84S	13570.65W	==>	13756.31	
20000.00	90.00	270.57	7793.60	2263.85S	13670.65W	==>	13855.06	

All data is in Feet unless otherwise stated
Coordinates are from Slot MD's are from Rig (Planned Datum #1 6013.6ft above Mean Sea Level)
Vertical Section is from 0.00N 0.00E on azimuth 261.51 degrees
Bottom hole distance is 14744.81 Feet on azimuth 261.20 degrees from Wellhead
Calculation method uses Minimum Curvature method
Prepared by
Date Printed: 12-Jun-2024

Interpolated Wellpath								
MD[ft]	Inc[deg]	Azi[deg]	TVD[ft]	North[ft]	East[ft]	Dogleg [deg/100ft]	Vertical Section[ft]	All Station Comments
20100.00	90.00	270.57	7793.60	2262.85S	13770.64W	==>	13953.82	
20200.00	90.00	270.57	7793.60	2261.86S	13870.64W	==>	14052.57	
20300.00	90.00	270.57	7793.60	2260.87S	13970.63W	==>	14151.32	
20400.00	90.00	270.57	7793.60	2259.87S	14070.63W	==>	14250.07	
20500.00	90.00	270.57	7793.60	2258.88S	14170.62W	==>	14348.83	
20600.00	90.00	270.57	7793.60	2257.88S	14270.62W	==>	14447.58	
20700.00	90.00	270.57	7793.60	2256.89S	14370.61W	==>	14546.33	
20800.00	90.00	270.57	7793.60	2255.89S	14470.61W	==>	14645.08	
20900.00	90.00	270.57	7793.60	2254.90S	14570.60W	==>	14743.84	
20900.77	90.00	270.57	7793.60	2254.89S	14571.37W	==>	14744.60	End of Hold/Target, RED_7HN BH

All data is in Feet unless otherwise stated
Coordinates are from Slot MD's are from Rig and TVD's are from Rig (Planned Datum #1 6013.6ft above Mean Sea Level)
Vertical Section is from 0.00N 0.00E on azimuth 261.51 degrees
Bottom hole distance is 14744.81 Feet on azimuth 261.20 degrees from Wellhead
Calculation method uses Minimum Curvature method
Prepared by
Date Printed: 12-Jun-2024

Targets							
Name	North[ft]	East[ft]	TVD[ft]	Latitude	Longitude	Northing	Easting
RED 7HN BH	2254.89S	14571.37W	7793.60	N39 33 21.4452	W104 36 10.4724	1082374.98	3252955.33
RED 7HN LP	2374.48S	2547.61W	7793.60	N39 33 20.3040	W104 33 36.9612	1082384.05	3264980.00

Formations						
Formation Name	Formation MD	Formation TVD	Wellpath Inc	Incidence Angle	North	East
Lower Dawson	77.00	77.00	0.00	90.00	0.00N	0.00E
Denver	202.00	202.00	0.00	90.00	0.00N	0.00E
Upper Arapahoe	1089.01	1089.00	1.78	88.22	1.04S	0.91W
Laramie - Fox Hills	1909.19	1894.00	18.18	71.82	107.70S	94.17W
Pierre Shale (Base of Fox Hills)	2159.39	2128.00	23.19	66.81	174.22S	152.33W
Sussex Sandstone	5906.57	5458.00	27.41	62.59	1467.45S	1283.10W
Sharon Springs Shale	8301.48	7568.01	43.06	46.94	2290.64S	2046.84W
Niobrara	8373.25	7618.01	48.61	41.39	2309.85S	2094.55W
Niobrara A	8388.55	7628.01	49.81	40.19	2313.67S	2105.49W
Niobrara B Top	8639.37	7753.01	70.21	19.79	2360.80S	2315.86W

Survey Tool Program					
Reference	Survey Name	MD[ft]	TVD[ft]	Survey Tool	Error Model
1095802	Planned	20900.77	7793.60	WdW Rate Gyro	Standard

Notes