

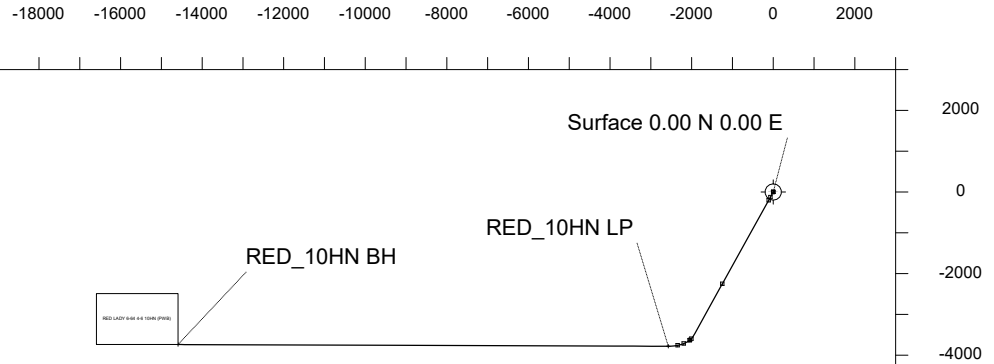
# GMT Exploration

Location	DJ Basin	Slot	RED LADY 6-64 4-6 4HN
Field	Elbert County Wells	Well	RED LADY 6-64 4-6 10HN
Installation	Ragged 6-64 4 Pad	Wellbore	RED LADY 6-64 4-6 10HN (PWB)

Created by	vinnie.wolfram
Date plotted	12-Jun-2024
Plot reference is RED LADY 6-64 4-6 10HN (PWB).	
Ref wellpath is RED LADY 6-64 4-6 10HN (PWB).	
Coordinates are in Feet reference RED LADY 6-64 4-6 4HN.	
True Vertical Depths are reference Rig Datum.	
Measured Depths are reference Rig Datum.	
Rig Datum: Planned Datum #1	
Rig Datum to Mean Sea Level: 6014.00 ft.	
Plot North is aligned to TRUE North.	

Scale 1 cm = 1000 ft

East (Feet) ->



## WELL PROFILE DATA

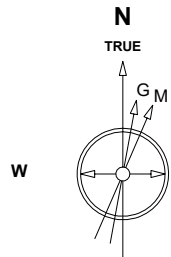
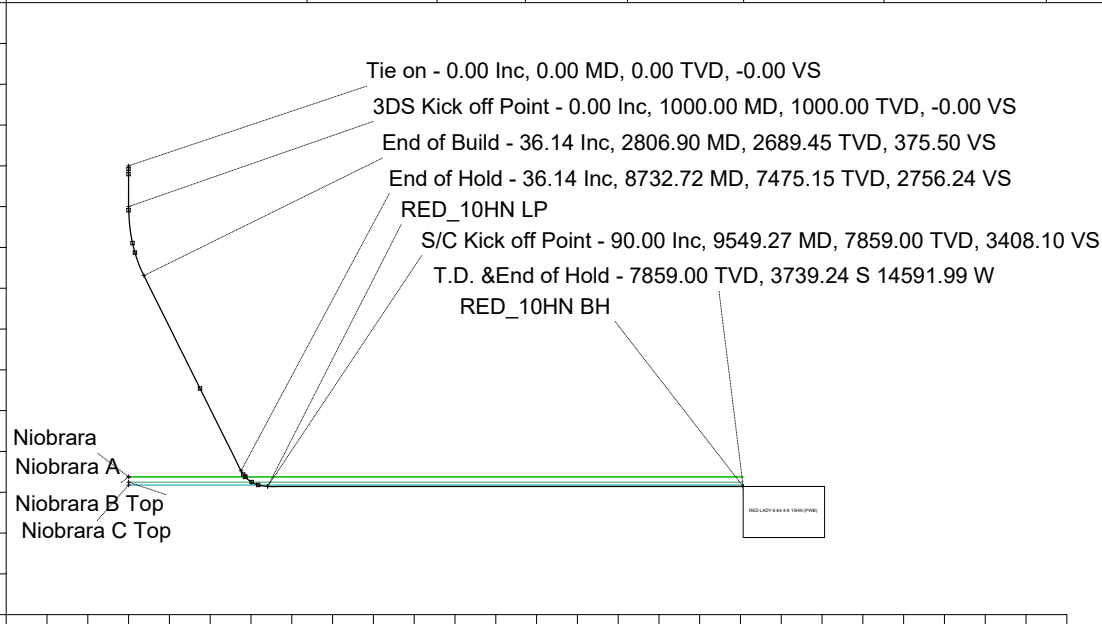
Point	MD	Inc	Azi	TVD	North	East	deg/100ft	V. Sect
Tie on	0.00	0.00	0.00	0.00	S 0.00	W 0.00		-0.00
KOP	1000.00	0.00	209.01	1000.00	S 0.00	W 0.00	0.00	-0.00
End of Build	2806.90	36.14	209.01	2689.45	S 482.02	W 267.32	2.00	375.50
End of Hold	8732.72	36.14	209.01	7475.15	S 3538.16	W 1962.19	0.00	2756.24
Target RED_10HN LP	9549.27	90.00	270.20	7859.00	S 3781.61	W 2573.42	9.00	3408.10
T.D. & Target RED... BH	21567.92	90.00	270.20	7859.00	S 3739.24	W 14591.99	0.00	15063.02

<- North(Feet)

Scale 1 cm = 1000 ft

<- True Vertical Depth (Feet)

Scale 1 cm = 1000 ft



Jan-3-2023  
IGRF-13 Dip: 65.95 deg Field: 51361.9 nT  
Lat: N39 33 44.1720 Long: W104 33 5.5800 Elev: 6016.70 ft  
Magnetic North is 7.50 deg East of TRUE North  
To correct azimuth from Magnetic to TRUE add 7.50 deg

Scale 1 cm = 1000 ft

Vertical Section (Feet) ->

Azimuth 256.07 with reference 0.00 N, 0.00 E from RED LADY 6-64 4-6 4HN

Wellhead Details							
Name	Latitude	Longitude	Northing	Easting	North	East	Slot Elevation Above Ground
RED LADY 6-64 4-6 4HN	N39 33 43.5744	W104 33 4.4352	1084765.6780	3267502.3440	60.47S	89.66E	0.00

Declination		
Date	Source	Time
Jan-3-2023	IGRF-13	10:05

Installation Details						
Name	Installation Position (Latitude)	Installation Position (Longitude)	Northing	Easting	Coord System Name	North Alignment
Ragged 6-64 4 Pad	N39 33 44.1720	W104 33 5.5800	1084825.1840	3267412.0415	NAD83 Colorado State Planes, North Zone, US Foot	True

Summary Wellpath								
MD[ft]	Inc[deg]	Azi[deg]	TVD[ft]	Vertical Depth SS	North[ft]	East[ft]	Dogleg [deg/100ft]	Vertical Section[ft]
0.00	0.00	0.00	0.00	-6014.00	0.00N	0.00E		0.00
1000.00	0.00	209.01	1000.00	-5014.00	0.00N	0.00E	==>	0.00
2806.90	36.14	209.01	2689.45	-3324.55	482.02S	267.32W	2.00	375.50
8732.72	36.14	209.01	7475.15	1461.15	3538.16S	1962.19W	==>	2756.24
9549.27	90.00	270.20	7859.00	1845.00	3781.61S	2573.42W	9.00	3408.10
21567.92	90.00	270.20	7859.00	1845.00	3739.24S	14591.99W	==>	15063.02

Interpolated Wellpath								
MD[ft]	Inc[deg]	Azi[deg]	TVD[ft]	North[ft]	East[ft]	Dogleg [deg/100ft]	Vertical Section[ft]	All Station Comments
0.00	0.00	0.00	0.00	0.00N	0.00E		0.00	Tie on, Slot Datum
76.00	0.00	0.00	76.00	0.00N	0.00E	==>	0.00	Lower Dawson
100.00	0.00	0.00	100.00	0.00N	0.00E	==>	0.00	
200.00	0.00	0.00	200.00	0.00N	0.00E	==>	0.00	
201.00	0.00	0.00	201.00	0.00N	0.00E	==>	0.00	Denver
300.00	0.00	0.00	300.00	0.00N	0.00E	==>	0.00	
400.00	0.00	0.00	400.00	0.00N	0.00E	==>	0.00	
500.00	0.00	0.00	500.00	0.00N	0.00E	==>	0.00	
600.00	0.00	0.00	600.00	0.00N	0.00E	==>	0.00	
700.00	0.00	0.00	700.00	0.00N	0.00E	==>	0.00	
800.00	0.00	0.00	800.00	0.00N	0.00E	==>	0.00	
900.00	0.00	0.00	900.00	0.00N	0.00E	==>	0.00	
1000.00	0.00	209.01	1000.00	0.00N	0.00E	==>	0.00	3DS Kick off Point
1088.01	1.76	209.01	1088.00	1.18S	0.66W	2.00	0.92	Upper Arapahoe
1100.00	2.00	209.01	1099.98	1.53S	0.85W	2.00	1.19	
1200.00	4.00	209.01	1199.84	6.10S	3.38W	2.00	4.75	
1300.00	6.00	209.01	1299.45	13.72S	7.61W	2.00	10.69	
1400.00	8.00	209.01	1398.70	24.38S	13.52W	2.00	18.99	
1500.00	10.00	209.01	1497.47	38.06S	21.11W	2.00	29.65	
1600.00	12.00	209.01	1595.62	54.75S	30.36W	2.00	42.65	
1700.00	14.00	209.01	1693.06	74.42S	41.27W	2.00	57.97	
1800.00	16.00	209.01	1789.64	97.05S	53.82W	2.00	75.60	
1900.00	18.00	209.01	1885.27	122.62S	68.00W	2.00	95.52	
1908.14	18.16	209.01	1893.00	124.83S	69.23W	2.00	97.24	Laramie - Fox Hills
2000.00	20.00	209.01	1979.82	151.09S	83.79W	2.00	117.70	
2100.00	22.00	209.01	2073.17	182.43S	101.17W	2.00	142.11	
2158.31	23.17	209.01	2127.00	202.01S	112.03W	2.00	157.36	Pierre Shale (Base of Fox Hills)
2200.00	24.00	209.01	2165.21	216.60S	120.12W	2.00	168.73	
2300.00	26.00	209.01	2255.84	253.55S	140.61W	2.00	197.52	
2400.00	28.00	209.01	2344.94	293.25S	162.63W	2.00	228.45	
2500.00	30.00	209.01	2432.39	335.65S	186.14W	2.00	261.47	
2600.00	32.00	209.01	2518.11	380.69S	211.12W	2.00	296.56	

All data is in Feet unless otherwise stated  
Coordinates are from Slot MD's are from Rig ( Planned Datum #1 6014.0ft above Mean Sea Level )  
Vertical Section is from 0.00N 0.00E on azimuth 256.07 degrees  
Bottom hole distance is 15063.47 Feet on azimuth 255.63 degrees from Wellhead  
Calculation method uses Minimum Curvature method  
Prepared by  
Date Printed: 12-Jun-2024

Interpolated Wellpath								
MD[ft]	Inc[deg]	Azi[deg]	TVD[ft]	North[ft]	East[ft]	Dogleg [deg/100ft]	Vertical Section[ft]	All Station Comments
2700.00	34.00	209.01	2601.97	428.31S	237.53W	2.00	333.66	
2800.00	36.00	209.01	2683.88	478.47S	265.35W	2.00	372.73	
2806.90	36.14	209.01	2689.45	482.02S	267.32W	2.00	375.50	End of Build
2900.00	36.14	209.01	2764.65	530.04S	293.95W	==>	412.90	
3000.00	36.14	209.01	2845.41	581.61S	322.55W	==>	453.08	
3100.00	36.14	209.01	2926.17	633.19S	351.15W	==>	493.25	
3200.00	36.14	209.01	3006.93	684.76S	379.75W	==>	533.43	
3300.00	36.14	209.01	3087.69	736.33S	408.35W	==>	573.61	
3400.00	36.14	209.01	3168.45	787.91S	436.96W	==>	613.78	
3500.00	36.14	209.01	3249.21	839.48S	465.56W	==>	653.96	
3600.00	36.14	209.01	3329.97	891.05S	494.16W	==>	694.13	
3700.00	36.14	209.01	3410.73	942.63S	522.76W	==>	734.31	
3800.00	36.14	209.01	3491.49	994.20S	551.36W	==>	774.48	
3900.00	36.14	209.01	3572.25	1045.77S	579.96W	==>	814.66	
4000.00	36.14	209.01	3653.01	1097.34S	608.56W	==>	854.84	
4100.00	36.14	209.01	3733.77	1148.92S	637.16W	==>	895.01	
4200.00	36.14	209.01	3814.53	1200.49S	665.77W	==>	935.19	
4300.00	36.14	209.01	3895.29	1252.06S	694.37W	==>	975.36	
4400.00	36.14	209.01	3976.05	1303.64S	722.97W	==>	1015.54	
4500.00	36.14	209.01	4056.81	1355.21S	751.57W	==>	1055.71	
4600.00	36.14	209.01	4137.57	1406.78S	780.17W	==>	1095.89	
4700.00	36.14	209.01	4218.33	1458.36S	808.77W	==>	1136.07	
4800.00	36.14	209.01	4299.09	1509.93S	837.37W	==>	1176.24	
4900.00	36.14	209.01	4379.85	1561.50S	865.98W	==>	1216.42	
5000.00	36.14	209.01	4460.60	1613.08S	894.58W	==>	1256.59	
5100.00	36.14	209.01	4541.36	1664.65S	923.18W	==>	1296.77	
5200.00	36.14	209.01	4622.12	1716.22S	951.78W	==>	1336.94	
5300.00	36.14	209.01	4702.88	1767.80S	980.38W	==>	1377.12	
5400.00	36.14	209.01	4783.64	1819.37S	1008.98W	==>	1417.29	
5500.00	36.14	209.01	4864.40	1870.94S	1037.58W	==>	1457.47	
5600.00	36.14	209.01	4945.16	1922.51S	1066.19W	==>	1497.65	
5700.00	36.14	209.01	5025.92	1974.09S	1094.79W	==>	1537.82	
5800.00	36.14	209.01	5106.68	2025.66S	1123.39W	==>	1578.00	
5900.00	36.14	209.01	5187.44	2077.23S	1151.99W	==>	1618.17	
6000.00	36.14	209.01	5268.20	2128.81S	1180.59W	==>	1658.35	
6100.00	36.14	209.01	5348.96	2180.38S	1209.19W	==>	1698.52	
6200.00	36.14	209.01	5429.72	2231.95S	1237.79W	==>	1738.70	
6233.77	36.14	209.01	5457.00	2249.37S	1247.45W	==>	1752.27	Sussex Sandstone
6300.00	36.14	209.01	5510.48	2283.53S	1266.39W	==>	1778.88	
6400.00	36.14	209.01	5591.24	2335.10S	1295.00W	==>	1819.05	
6500.00	36.14	209.01	5672.00	2386.67S	1323.60W	==>	1859.23	
6600.00	36.14	209.01	5752.76	2438.25S	1352.20W	==>	1899.40	
6700.00	36.14	209.01	5833.52	2489.82S	1380.80W	==>	1939.58	
6800.00	36.14	209.01	5914.28	2541.39S	1409.40W	==>	1979.75	
6900.00	36.14	209.01	5995.04	2592.97S	1438.00W	==>	2019.93	
7000.00	36.14	209.01	6075.80	2644.54S	1466.60W	==>	2060.11	
7100.00	36.14	209.01	6156.56	2696.11S	1495.21W	==>	2100.28	
7200.00	36.14	209.01	6237.32	2747.69S	1523.81W	==>	2140.46	
7300.00	36.14	209.01	6318.08	2799.26S	1552.41W	==>	2180.63	
7400.00	36.14	209.01	6398.84	2850.83S	1581.01W	==>	2220.81	
7500.00	36.14	209.01	6479.60	2902.40S	1609.61W	==>	2260.98	
7600.00	36.14	209.01	6560.36	2953.98S	1638.21W	==>	2301.16	
7700.00	36.14	209.01	6641.12	3005.55S	1666.81W	==>	2341.34	
7800.00	36.14	209.01	6721.88	3057.12S	1695.41W	==>	2381.51	
7900.00	36.14	209.01	6802.64	3108.70S	1724.02W	==>	2421.69	
8000.00	36.14	209.01	6883.40	3160.27S	1752.62W	==>	2461.86	
8100.00	36.14	209.01	6964.16	3211.84S	1781.22W	==>	2502.04	
8200.00	36.14	209.01	7044.92	3263.42S	1809.82W	==>	2542.21	
8300.00	36.14	209.01	7125.68	3314.99S	1838.42W	==>	2582.39	
8400.00	36.14	209.01	7206.44	3366.56S	1867.02W	==>	2622.56	
8500.00	36.14	209.01	7287.20	3418.14S	1895.62W	==>	2662.74	

All data is in Feet unless otherwise stated  
Coordinates are from Slot MD's are from Rig and TVD's are from Rig ( Planned Datum #1 6014.0ft above Mean Sea Level )  
Vertical Section is from 0.00N 0.00E on azimuth 256.07 degrees  
Bottom hole distance is 15063.47 Feet on azimuth 255.63 degrees from Wellhead  
Calculation method uses Minimum Curvature method  
Prepared by  
Date Printed: 12-Jun-2024

Interpolated Wellpath								
MD[ft]	Inc[deg]	Azi[deg]	TVD[ft]	North[ft]	East[ft]	Dogleg [deg/100ft]	Vertical Section[ft]	All Station Comments
8600.00	36.14	209.01	7367.96	3469.71S	1924.23W	==>	2702.92	
8700.00	36.14	209.01	7448.72	3521.28S	1952.83W	==>	2743.09	
8732.72	36.14	209.01	7475.15	3538.16S	1962.19W	==>	2756.24	End of Hold
8800.00	38.94	217.84	7528.53	3572.24S	1984.80W	9.00	2786.39	
8850.33	41.42	223.71	7567.00	3596.77S	2006.01W	9.00	2812.89	Sharon Springs Shale
8900.00	44.13	228.94	7603.46	3620.02S	2030.42W	9.00	2842.17	
8919.05	45.24	230.81	7617.01	3628.65S	2040.66W	9.00	2854.19	Niobrara
8933.35	46.08	232.17	7627.00	3635.02S	2048.66W	9.00	2863.49	Niobrara A
9000.00	50.22	238.01	7671.48	3663.33S	2089.38W	9.00	2909.83	
9100.00	56.89	245.53	7730.92	3701.11S	2160.23W	9.00	2987.69	
9140.11	59.68	248.23	7752.00	3714.49S	2191.61W	9.00	3021.36	Niobrara B Top
9200.00	63.94	251.97	7780.30	3732.42S	2241.23W	9.00	3073.84	
9300.00	71.25	257.66	7818.41	3756.50S	2330.38W	9.00	3166.16	
9311.43	72.10	258.27	7822.01	3758.76S	2340.99W	9.00	3177.01	Niobrara C Top
9400.00	78.71	262.87	7844.33	3772.74S	2425.48W	9.00	3262.38	
9500.00	86.27	267.81	7857.39	3780.75S	2524.19W	9.00	3360.12	
9549.27	90.00	270.20	7859.00	3781.61S	2573.42W	9.00	3408.10	S/C Kick off Point/Target, RED 10HN LP
9600.00	90.00	270.20	7859.00	3781.43S	2624.15W	==>	3457.29	
9700.00	90.00	270.20	7859.00	3781.08S	2724.14W	==>	3554.27	
9800.00	90.00	270.20	7859.00	3780.72S	2824.14W	==>	3651.24	
9900.00	90.00	270.20	7859.00	3780.37S	2924.14W	==>	3748.21	
10000.00	90.00	270.20	7859.00	3780.02S	3024.14W	==>	3845.19	
10100.00	90.00	270.20	7859.00	3779.67S	3124.14W	==>	3942.16	
10200.00	90.00	270.20	7859.00	3779.31S	3224.14W	==>	4039.14	
10300.00	90.00	270.20	7859.00	3778.96S	3324.14W	==>	4136.11	
10400.00	90.00	270.20	7859.00	3778.61S	3424.14W	==>	4233.08	
10500.00	90.00	270.20	7859.00	3778.26S	3524.14W	==>	4330.06	
10600.00	90.00	270.20	7859.00	3777.90S	3624.14W	==>	4427.03	
10700.00	90.00	270.20	7859.00	3777.55S	3724.14W	==>	4524.00	
10800.00	90.00	270.20	7859.00	3777.20S	3824.14W	==>	4620.98	
10900.00	90.00	270.20	7859.00	3776.85S	3924.14W	==>	4717.95	
11000.00	90.00	270.20	7859.00	3776.49S	4024.14W	==>	4814.92	
11100.00	90.00	270.20	7859.00	3776.14S	4124.14W	==>	4911.90	
11200.00	90.00	270.20	7859.00	3775.79S	4224.14W	==>	5008.87	
11300.00	90.00	270.20	7859.00	3775.44S	4324.13W	==>	5105.85	
11400.00	90.00	270.20	7859.00	3775.08S	4424.13W	==>	5202.82	
11500.00	90.00	270.20	7859.00	3774.73S	4524.13W	==>	5299.79	
11600.00	90.00	270.20	7859.00	3774.38S	4624.13W	==>	5396.77	
11700.00	90.00	270.20	7859.00	3774.03S	4724.13W	==>	5493.74	
11800.00	90.00	270.20	7859.00	3773.67S	4824.13W	==>	5590.71	
11900.00	90.00	270.20	7859.00	3773.32S	4924.13W	==>	5687.69	
12000.00	90.00	270.20	7859.00	3772.97S	5024.13W	==>	5784.66	
12100.00	90.00	270.20	7859.00	3772.62S	5124.13W	==>	5881.63	
12200.00	90.00	270.20	7859.00	3772.26S	5224.13W	==>	5978.61	
12300.00	90.00	270.20	7859.00	3771.91S	5324.13W	==>	6075.58	
12400.00	90.00	270.20	7859.00	3771.56S	5424.13W	==>	6172.56	
12500.00	90.00	270.20	7859.00	3771.21S	5524.13W	==>	6269.53	
12600.00	90.00	270.20	7859.00	3770.85S	5624.13W	==>	6366.50	
12700.00	90.00	270.20	7859.00	3770.50S	5724.13W	==>	6463.48	
12800.00	90.00	270.20	7859.00	3770.15S	5824.13W	==>	6560.45	
12900.00	90.00	270.20	7859.00	3769.79S	5924.12W	==>	6657.42	
13000.00	90.00	270.20	7859.00	3769.44S	6024.12W	==>	6754.40	
13100.00	90.00	270.20	7859.00	3769.09S	6124.12W	==>	6851.37	
13200.00	90.00	270.20	7859.00	3768.74S	6224.12W	==>	6948.34	
13300.00	90.00	270.20	7859.00	3768.38S	6324.12W	==>	7045.32	
13400.00	90.00	270.20	7859.00	3768.03S	6424.12W	==>	7142.29	
13500.00	90.00	270.20	7859.00	3767.68S	6524.12W	==>	7239.26	
13600.00	90.00	270.20	7859.00	3767.33S	6624.12W	==>	7336.24	
13700.00	90.00	270.20	7859.00	3766.97S	6724.12W	==>	7433.21	

All data is in Feet unless otherwise stated  
Coordinates are from Slot MD's are from Rig and TVD's are from Rig ( Planned Datum #1 6014.0ft above Mean Sea Level )  
Vertical Section is from 0.00N 0.00E on azimuth 256.07 degrees  
Bottom hole distance is 15063.47 Feet on azimuth 255.63 degrees from Wellhead  
Calculation method uses Minimum Curvature method  
Prepared by  
Date Printed: 12-Jun-2024

Interpolated Wellpath								
MD[ft]	Inc[deg]	Azi[deg]	TVD[ft]	North[ft]	East[ft]	Dogleg [deg/100ft]	Vertical Section[ft]	All Station Comments
13800.00	90.00	270.20	7859.00	3766.62S	6824.12W	==>	7530.19	
13900.00	90.00	270.20	7859.00	3766.27S	6924.12W	==>	7627.16	
14000.00	90.00	270.20	7859.00	3765.92S	7024.12W	==>	7724.13	
14100.00	90.00	270.20	7859.00	3765.56S	7124.12W	==>	7821.11	
14200.00	90.00	270.20	7859.00	3765.21S	7224.12W	==>	7918.08	
14300.00	90.00	270.20	7859.00	3764.86S	7324.12W	==>	8015.05	
14400.00	90.00	270.20	7859.00	3764.51S	7424.12W	==>	8112.03	
14500.00	90.00	270.20	7859.00	3764.15S	7524.12W	==>	8209.00	
14600.00	90.00	270.20	7859.00	3763.80S	7624.11W	==>	8305.97	
14700.00	90.00	270.20	7859.00	3763.45S	7724.11W	==>	8402.95	
14800.00	90.00	270.20	7859.00	3763.10S	7824.11W	==>	8499.92	
14900.00	90.00	270.20	7859.00	3762.74S	7924.11W	==>	8596.90	
15000.00	90.00	270.20	7859.00	3762.39S	8024.11W	==>	8693.87	
15100.00	90.00	270.20	7859.00	3762.04S	8124.11W	==>	8790.84	
15200.00	90.00	270.20	7859.00	3761.69S	8224.11W	==>	8887.82	
15300.00	90.00	270.20	7859.00	3761.33S	8324.11W	==>	8984.79	
15400.00	90.00	270.20	7859.00	3760.98S	8424.11W	==>	9081.76	
15500.00	90.00	270.20	7859.00	3760.63S	8524.11W	==>	9178.74	
15600.00	90.00	270.20	7859.00	3760.28S	8624.11W	==>	9275.71	
15700.00	90.00	270.20	7859.00	3759.92S	8724.11W	==>	9372.68	
15800.00	90.00	270.20	7859.00	3759.57S	8824.11W	==>	9469.66	
15900.00	90.00	270.20	7859.00	3759.22S	8924.11W	==>	9566.63	
16000.00	90.00	270.20	7859.00	3758.87S	9024.11W	==>	9663.61	
16100.00	90.00	270.20	7859.00	3758.51S	9124.11W	==>	9760.58	
16200.00	90.00	270.20	7859.00	3758.16S	9224.10W	==>	9857.55	
16300.00	90.00	270.20	7859.00	3757.81S	9324.10W	==>	9954.53	
16400.00	90.00	270.20	7859.00	3757.46S	9424.10W	==>	10051.50	
16500.00	90.00	270.20	7859.00	3757.10S	9524.10W	==>	10148.47	
16600.00	90.00	270.20	7859.00	3756.75S	9624.10W	==>	10245.45	
16700.00	90.00	270.20	7859.00	3756.40S	9724.10W	==>	10342.42	
16800.00	90.00	270.20	7859.00	3756.05S	9824.10W	==>	10439.39	
16900.00	90.00	270.20	7859.00	3755.69S	9924.10W	==>	10536.37	
17000.00	90.00	270.20	7859.00	3755.34S	10024.10W	==>	10633.34	
17100.00	90.00	270.20	7859.00	3754.99S	10124.10W	==>	10730.31	
17200.00	90.00	270.20	7859.00	3754.64S	10224.10W	==>	10827.29	
17300.00	90.00	270.20	7859.00	3754.28S	10324.10W	==>	10924.26	
17400.00	90.00	270.20	7859.00	3753.93S	10424.10W	==>	11021.24	
17500.00	90.00	270.20	7859.00	3753.58S	10524.10W	==>	11118.21	
17600.00	90.00	270.20	7859.00	3753.22S	10624.10W	==>	11215.18	
17700.00	90.00	270.20	7859.00	3752.87S	10724.10W	==>	11312.16	
17800.00	90.00	270.20	7859.00	3752.52S	10824.09W	==>	11409.13	
17900.00	90.00	270.20	7859.00	3752.17S	10924.09W	==>	11506.10	
18000.00	90.00	270.20	7859.00	3751.81S	11024.09W	==>	11603.08	
18100.00	90.00	270.20	7859.00	3751.46S	11124.09W	==>	11700.05	
18200.00	90.00	270.20	7859.00	3751.11S	11224.09W	==>	11797.02	
18300.00	90.00	270.20	7859.00	3750.76S	11324.09W	==>	11894.00	
18400.00	90.00	270.20	7859.00	3750.40S	11424.09W	==>	11990.97	
18500.00	90.00	270.20	7859.00	3750.05S	11524.09W	==>	12087.95	
18600.00	90.00	270.20	7859.00	3749.70S	11624.09W	==>	12184.92	
18700.00	90.00	270.20	7859.00	3749.35S	11724.09W	==>	12281.89	
18800.00	90.00	270.20	7859.00	3748.99S	11824.09W	==>	12378.87	
18900.00	90.00	270.20	7859.00	3748.64S	11924.09W	==>	12475.84	
19000.00	90.00	270.20	7859.00	3748.29S	12024.09W	==>	12572.81	
19100.00	90.00	270.20	7859.00	3747.94S	12124.09W	==>	12669.79	
19200.00	90.00	270.20	7859.00	3747.58S	12224.09W	==>	12766.76	
19300.00	90.00	270.20	7859.00	3747.23S	12324.09W	==>	12863.73	
19400.00	90.00	270.20	7859.00	3746.88S	12424.08W	==>	12960.71	
19500.00	90.00	270.20	7859.00	3746.53S	12524.08W	==>	13057.68	
19600.00	90.00	270.20	7859.00	3746.17S	12624.08W	==>	13154.66	
19700.00	90.00	270.20	7859.00	3745.82S	12724.08W	==>	13251.63	
19800.00	90.00	270.20	7859.00	3745.47S	12824.08W	==>	13348.60	
19900.00	90.00	270.20	7859.00	3745.12S	12924.08W	==>	13445.58	

All data is in Feet unless otherwise stated  
Coordinates are from Slot MD's are from Rig ( Planned Datum #1 6014.0ft above Mean Sea Level )  
Vertical Section is from 0.00N 0.00E on azimuth 256.07 degrees  
Bottom hole distance is 15063.47 Feet on azimuth 255.63 degrees from Wellhead  
Calculation method uses Minimum Curvature method  
Prepared by  
Date Printed: 12-Jun-2024

Interpolated Wellpath								
MD[ft]	Inc[deg]	Azi[deg]	TVD[ft]	North[ft]	East[ft]	Dogleg [deg/100ft]	Vertical Section[ft]	All Station Comments
20000.00	90.00	270.20	7859.00	3744.76S	13024.08W	==>	13542.55	
20100.00	90.00	270.20	7859.00	3744.41S	13124.08W	==>	13639.52	
20200.00	90.00	270.20	7859.00	3744.06S	13224.08W	==>	13736.50	
20300.00	90.00	270.20	7859.00	3743.71S	13324.08W	==>	13833.47	
20400.00	90.00	270.20	7859.00	3743.35S	13424.08W	==>	13930.44	
20500.00	90.00	270.20	7859.00	3743.00S	13524.08W	==>	14027.42	
20600.00	90.00	270.20	7859.00	3742.65S	13624.08W	==>	14124.39	
20700.00	90.00	270.20	7859.00	3742.30S	13724.08W	==>	14221.37	
20800.00	90.00	270.20	7859.00	3741.94S	13824.08W	==>	14318.34	
20900.00	90.00	270.20	7859.00	3741.59S	13924.08W	==>	14415.31	
21000.00	90.00	270.20	7859.00	3741.24S	14024.07W	==>	14512.29	
21100.00	90.00	270.20	7859.00	3740.89S	14124.07W	==>	14609.26	
21200.00	90.00	270.20	7859.00	3740.53S	14224.07W	==>	14706.23	
21300.00	90.00	270.20	7859.00	3740.18S	14324.07W	==>	14803.21	
21400.00	90.00	270.20	7859.00	3739.83S	14424.07W	==>	14900.18	
21500.00	90.00	270.20	7859.00	3739.48S	14524.07W	==>	14997.15	
21567.92	90.00	270.20	7859.00	3739.24S	14591.99W	==>	15063.02	End of Hold/Target, RED_10HN BH

All data is in Feet unless otherwise stated  
Coordinates are from Slot MD's are from Rig and TVD's are from Rig ( Planned Datum #1 6014.0ft above Mean Sea Level )  
Vertical Section is from 0.00N 0.00E on azimuth 256.07 degrees  
Bottom hole distance is 15063.47 Feet on azimuth 255.63 degrees from Wellhead  
Calculation method uses Minimum Curvature method  
Prepared by  
Date Printed: 12-Jun-2024



All data is in Feet unless otherwise stated  
 Coordinates are from Slot MD's are from Rig and TVD's are from Rig ( Planned Datum #1 6014.0ft above Mean Sea Level )  
 Vertical Section is from 0.00N 0.00E on azimuth 256.07 degrees  
 Bottom hole distance is 15063.47 Feet on azimuth 255.63 degrees from Wellhead  
 Calculation method uses Minimum Curvature method  
 Prepared by  
 Date Printed: 12-Jun-2024