

**VERDAD RESOURCES LLC
OLSEN #1
SECTION 25 , T8N, R61W, 6th P.M.
WELD COUNTY, COLORADO**

DATE:

DESCRIPTION:

[illegible]



PHOTO: VIEW OF AS-DRILLED LOCATION

CAMERA ANGLE: NORTHERLY

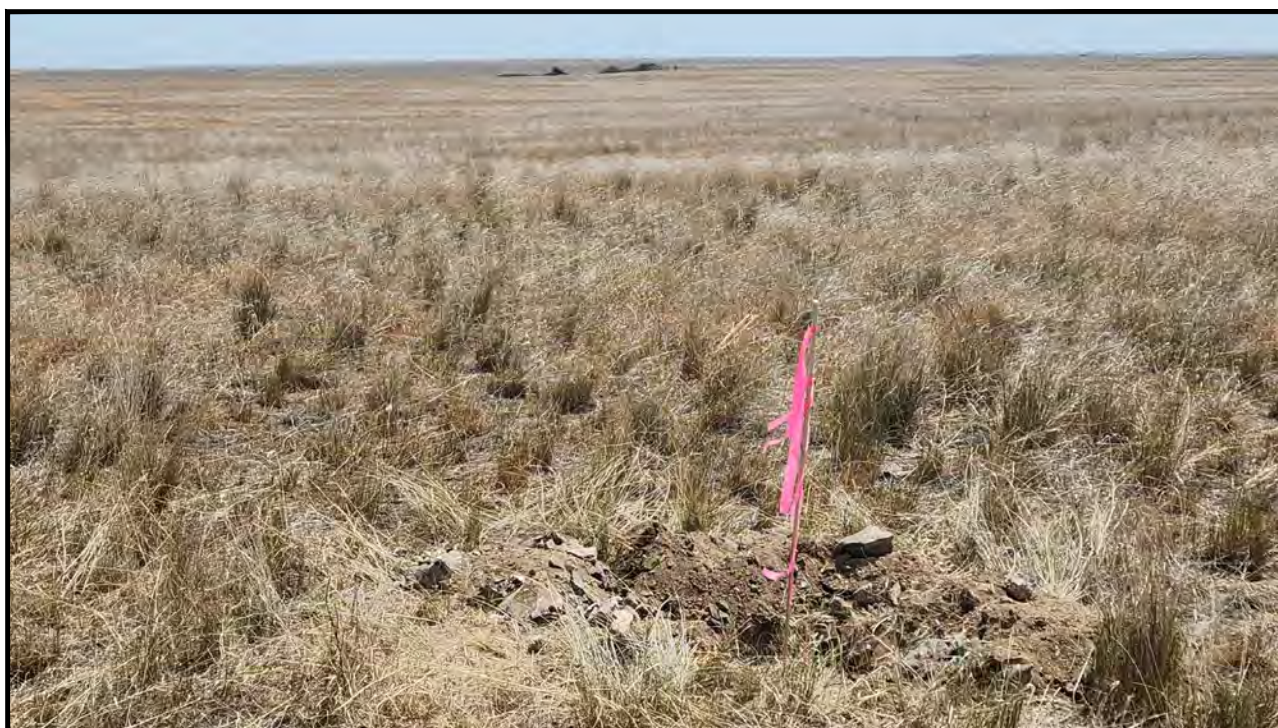


PHOTO: VIEW OF AS-DRILLED LOCATION

CAMERA ANGLE: EASTERLY

VERDAD RESOURCES LLC

OLSEN #1
NW 1/4 SW 1/4, SECTION 25, T8N, R61W, 6th P.M.
WELD COUNTY, COLORADO



UELS, LLC
Corporate Office * 85 South 200 East
Vernal, UT 84078 * (435) 789-1017

TAKEN BY	J.MORRIS., G.W.	06-04-24	
DRAWN BY	Q.S.J.	06-11-24	
LOCATION PHOTOS			PHOTO 1



PHOTO: VIEW OF AS-DRILLED LOCATION

CAMERA ANGLE: SOUTHERLY



PHOTO: VIEW OF AS-DRILLED LOCATION

CAMERA ANGLE: WESTERLY

VERDAD RESOURCES LLC

OLSEN #1
NW 1/4 SW 1/4, SECTION 25, T8N, R61W, 6th P.M.
WELD COUNTY, COLORADO

TAKEN BY	J.MORRIS., G.W.	06-04-24	
DRAWN BY	Q.S.J.	06-11-24	
LOCATION PHOTOS			PHOTO 2



UELS, LLC
 Corporate Office * 85 South 200 East
 Vernal, UT 84078 * (435) 789-1017

Well Name	Lat: (NAD 83)	Long: (NAD 83)	Lat: (NAD 27)	Long: (NAD 27)	Section	Township	Range	Qtr./Qtr.	DATE COMPLETED	PDOP	OPERATOR
OLSEN #1	40°37'52.52" (40.631256°)	-104°09'40.31" (-104.161197°)	40°37'52.57" (40.631271°)	-104°09'38.49" (-104.160692°)	25	T8N	R61W	NW/SW	6/4/2024	1.6	JARED MORRIS

