

Flowline Abandonment Type:

Previously Abandoned 4/30/2018 - Prior to 1105.d.(2) requirements enacted 1/15/2020.

Flowlines

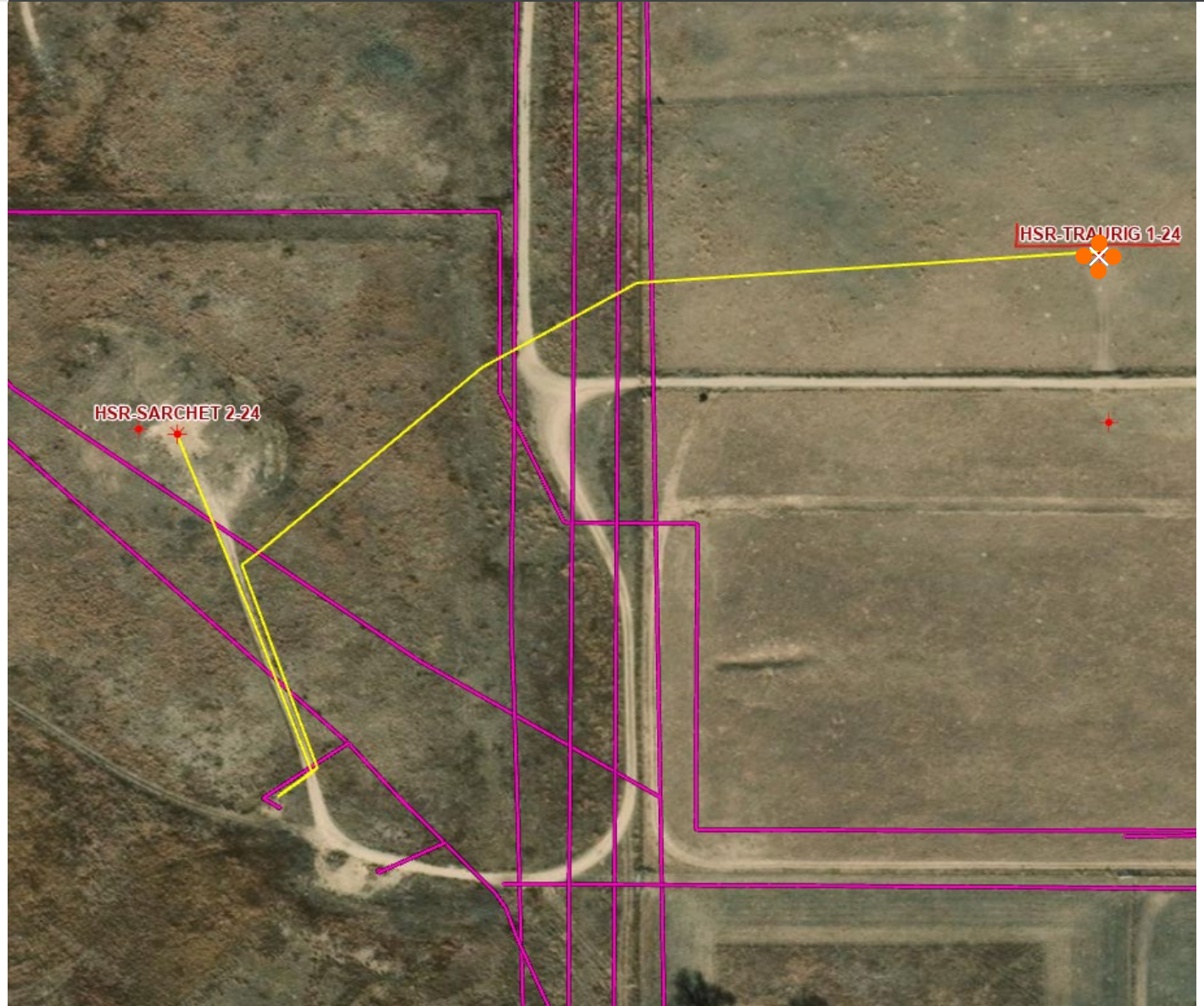
- Abandoned
- Active
- Out of Service
- Pre-commissioned
- Removed
- Turned into Air Line
- Area of Conflict
(Proposed Abandon-in-Place Area)
- ✕ Proposed Soil Sample Location
- Field Screening Location

Wells

- Active
- Abandoned Location
- Dry & Abandoned
- ✶ Plugged & Abandoned
- ✶ Producing
- ✶ Shut-In
- Temporarily Abandoned

Third-Party Pipelines

- — —
- — —
- — —
- — —
- — —
- — —
- NWI Wetlands



Well Latitude/Longitude: 40.216561/-104.605731
Flowline Length (ft): 1363

Flowline Point A Latitude/Longitude: 40.21657128/-104.6057285
Flowline Point B Latitude/Longitude: 40.21458711/-104.6087303

Created By: Henry Lawrence
Date: 5/30/2024

