

Project: Rio Blanco County, CO
Site: ELU A18 495 Pad
Well: ELU A18 FED 12C-18-495
Wellbore: OH
Design: Design #5
Latitude: 39.708961
Longitude: -108.103777
Ground Level: 8029.0
RKB=30' @ 8059.0usft (TBD)

PROJECT DETAILS: Rio Blanco County, CO

Geodetic System: Universal Transverse Mercator (US Survey Feet)
Datum: NAD 1927 - Western US
Ellipsoid: Clarke 1866
Zone: Zone 12N (114 W to 108 W)
System Datum: Mean Sea Level

REFERENCE INFORMATION

Vertical (TVD) Reference: RKB=30' @ 8059.0usft (TBD)
Section (VS) Reference: Slot - 12C-18(0.0N, 0.0E)
Measured Depth Reference: RKB=30' @ 8059.0usft (TBD)
Calculation Method: Minimum Curvature

FORMATION TOP DETAILS

TVDPath	MDPath	Formation
3887.0	4102.2	Wasatch
6437.0	6828.1	Wasatch G
6847.0	7266.4	Fort Union
8851.0	9377.0	Ohio Creek
9501.0	10027.2	Williams Fork
12401.0	12927.9	Cameo
12901.0	13428.0	Rollins

SECTION DETAILS

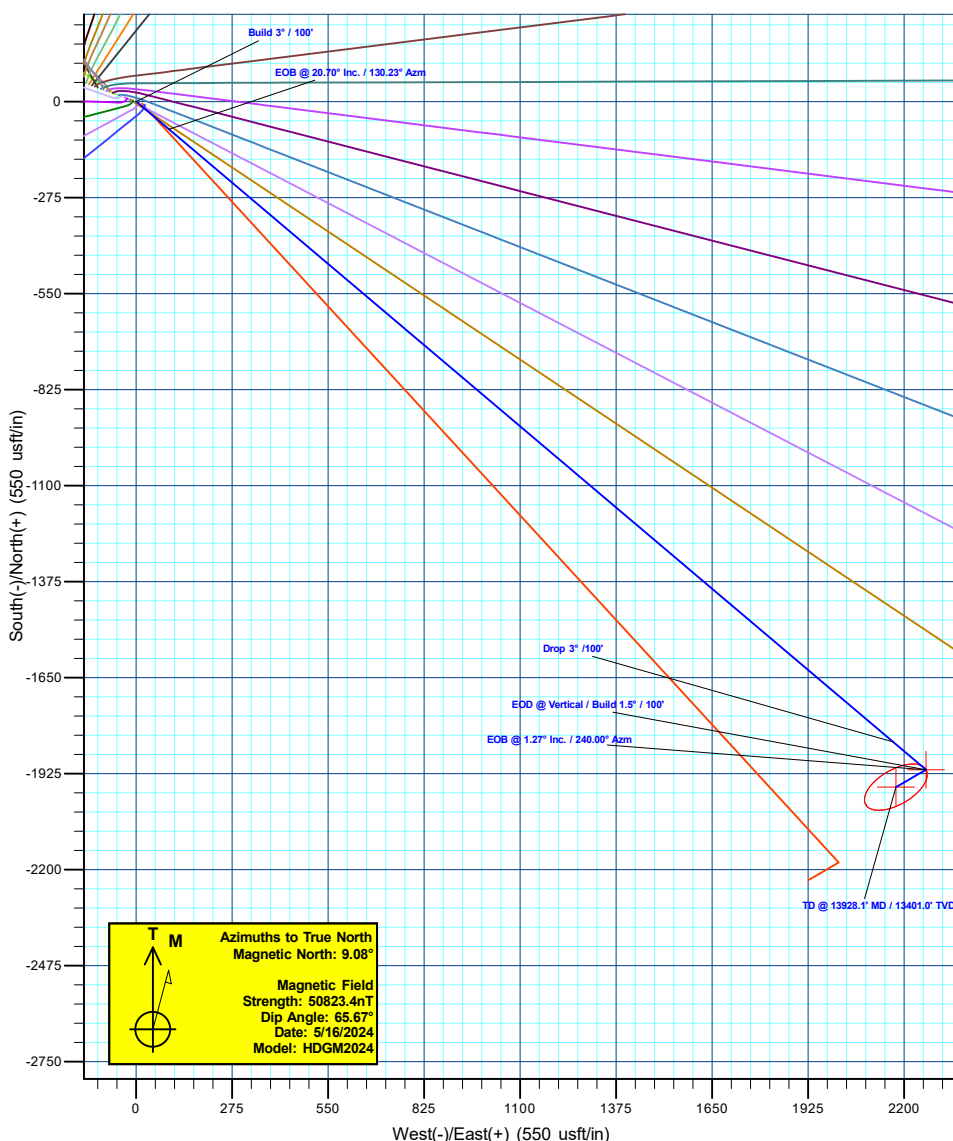
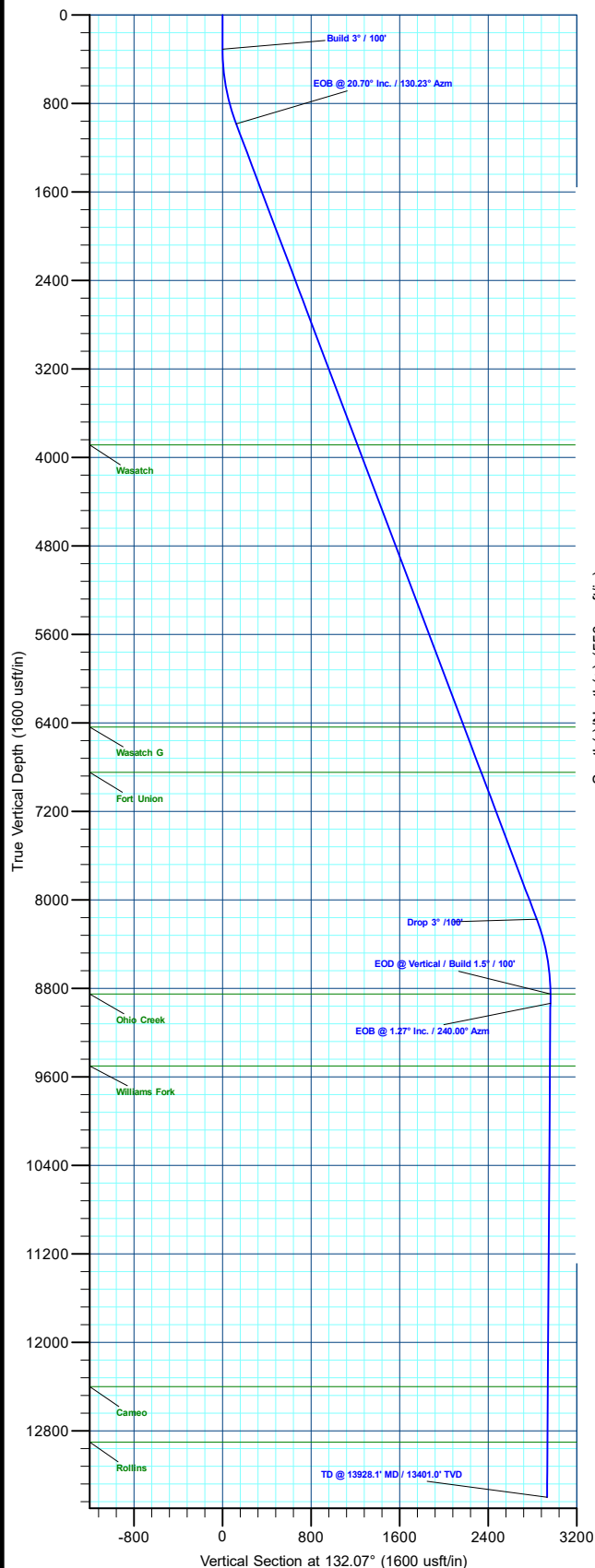
MD	Inc	Azi	TVD	+N/-S	+E/-W	Dieg	TFace	VSec	Annotation
0.0	0.00	0.00	0.0	0.0	0.0	0.00	0.00	0.0	
310.0	0.00	0.00	310.0	0.0	0.0	0.00	0.00	0.0	Build 3° / 100'
1000.0	20.70	130.23	985.1	-79.6	94.1	3.00	130.23	123.2	EOB @ 20.70° Inc. / 130.23° Azm
8687.1	20.70	130.23	8175.9	-1834.3	2168.6	0.00	0.00	2838.9	Drop 3° / 100'
9377.0	0.00	0.00	8851.0	-1914.0	2262.7	3.00	180.00	2962.1	EOD @ Vertical / Build 1.5° / 100'
9461.8	1.27	240.00	8935.7	-1914.4	2261.9	1.50	240.00	2961.8	EOB @ 1.27° Inc. / 240.00° Azm
13928.1	1.27	240.00	13401.0	-1964.0	2176.1	0.00	0.00	2931.3	TD @ 13928.1' MD / 13401.0' TVD

DESIGN TARGET DETAILS

Name	TVD	+N/-S	+E/-W	Northing	Easting	Latitude	Longitude
12C-18 - OHCR	8851.0	-1914.0	2262.7	14431389.97	2457348.74	39.703708	-108.095738
12C-18 - PBHL	13401.0	-1964.0	2176.1	14431337.20	2457263.80	39.703571	-108.096046

WELL DETAILS: ELU A18 FED 12C-18-495

Ground Level : 8029.0							
+N/-S	+E/-W	Northing	Easting	Latitude	Longitude		
0.0	0.0	14433229.83	2455025.34	39.708961	-108.103777	12C-18	



Plan: Design #5 (ELU A18 FED 12C-18-495/OH)

Created By: Will Jircik

Date: 21:06, June 09 2024



Caerus Oil & Gas

Rio Blanco County, CO

ELU A18 495 Pad

ELU A18 FED 12C-18-495 - Slot 12C-18

OH

Plan: Design #5

KLX Well Planning Report

09 June, 2024



Database:	KLXDirectional-AD	Local Co-ordinate Reference:	Well ELU A18 FED 12C-18-495 - Slot 12C-18
Company:	Caerus Oil & Gas	TVD Reference:	RKB=30' @ 8059.0usft (TBD)
Project:	Rio Blanco County, CO	MD Reference:	RKB=30' @ 8059.0usft (TBD)
Site:	ELU A18 495 Pad	North Reference:	True
Well:	ELU A18 FED 12C-18-495	Survey Calculation Method:	Minimum Curvature
Wellbore:	OH		
Design:	Design #5		

Project	Rio Blanco County, CO		
Map System:	Universal Transverse Mercator (US Survey Feet)	System Datum:	Mean Sea Level
Geo Datum:	NAD 1927 - Western US		
Map Zone:	Zone 12N (114 W to 108 W)		

Site		ELU A18 495 Pad			
Site Position:		Northing:	14,433,285.62 usft	Latitude:	39.709129
From:	Map	Easting:	2,454,854.21 usft	Longitude:	-108.104378
Position Uncertainty:	0.0 usft	Slot Radius:	13-3/16 "	Grid Convergence:	1.85 °

Well		ELU A18 FED 12C-18-495 - Slot 12C-18				
Well Position	+N/-S	-61.3 usft	Northing:	14,433,229.83 usft	Latitude:	39.708961
	+E/-W	169.2 usft	Easting:	2,455,025.34 usft	Longitude:	-108.103777
Position Uncertainty		0.0 usft	Wellhead Elevation:		Ground Level:	8,029.0 usft

Wellbore	OH				
Magnetics	Model Name	Sample Date	Declination (°)	Dip Angle (°)	Field Strength (nT)
	HDGM2024	5/16/2024	9.08	65.67	50,823.40000000

Design	Design #5			
Audit Notes:				
Version:	Phase:	PLAN	Tie On Depth:	0.0
Vertical Section:	Depth From (TVD) (usft)	+N/-S (usft)	+E/-W (usft)	Direction (°)
	0.0	0.0	0.0	132.07

Plan Sections										
Measured Depth (usft)	Inclination (°)	Azimuth (°)	Vertical Depth (usft)	+N/-S (usft)	+E/-W (usft)	Dogleg Rate (°/100usft)	Build Rate (°/100usft)	Turn Rate (°/100usft)	TFO (°)	Target
0.0	0.00	0.00	0.0	0.0	0.0	0.00	0.00	0.00	0.00	
310.0	0.00	0.00	310.0	0.0	0.0	0.00	0.00	0.00	0.00	
1,000.0	20.70	130.23	985.1	-79.6	94.1	3.00	3.00	0.00	130.23	
8,687.1	20.70	130.23	8,175.9	-1,834.3	2,168.6	0.00	0.00	0.00	0.00	
9,377.0	0.00	0.00	8,851.0	-1,914.0	2,262.7	3.00	-3.00	0.00	180.00	12C-18 - OHCR
9,461.8	1.27	240.00	8,935.7	-1,914.4	2,261.9	1.50	1.50	-141.63	240.00	
13,928.1	1.27	240.00	13,401.0	-1,964.0	2,176.1	0.00	0.00	0.00	0.00	12C-18 - PBHL

Database:	KLXDirectional-AD	Local Co-ordinate Reference:	Well ELU A18 FED 12C-18-495 - Slot 12C-18
Company:	Caerus Oil & Gas	TVD Reference:	RKB=30' @ 8059.0usft (TBD)
Project:	Rio Blanco County, CO	MD Reference:	RKB=30' @ 8059.0usft (TBD)
Site:	ELU A18 495 Pad	North Reference:	True
Well:	ELU A18 FED 12C-18-495	Survey Calculation Method:	Minimum Curvature
Wellbore:	OH		
Design:	Design #5		

Planned Survey									
Measured Depth (usft)	Inclination (°)	Azimuth (°)	Vertical Depth (usft)	+N/-S (usft)	+E/-W (usft)	Vertical Section (usft)	Dogleg Rate (°/100usft)	Build Rate (°/100usft)	Turn Rate (°/100usft)
0.0	0.00	0.00	0.0	0.0	0.0	0.0	0.00	0.00	0.00
100.0	0.00	0.00	100.0	0.0	0.0	0.0	0.00	0.00	0.00
200.0	0.00	0.00	200.0	0.0	0.0	0.0	0.00	0.00	0.00
Build 3° / 100'									
310.0	0.00	0.00	310.0	0.0	0.0	0.0	0.00	0.00	0.00
400.0	2.70	130.23	400.0	-1.4	1.6	2.1	3.00	3.00	0.00
500.0	5.70	130.23	499.7	-6.1	7.2	9.4	3.00	3.00	0.00
600.0	8.70	130.23	598.9	-14.2	16.8	22.0	3.00	3.00	0.00
700.0	11.70	130.23	697.3	-25.6	30.3	39.7	3.00	3.00	0.00
800.0	14.70	130.23	794.6	-40.4	47.7	62.5	3.00	3.00	0.00
900.0	17.70	130.23	890.7	-58.4	69.0	90.4	3.00	3.00	0.00
EOB @ 20.70° Inc. / 130.23° Azm									
1,000.0	20.70	130.23	985.1	-79.6	94.1	123.2	3.00	3.00	0.00
1,100.0	20.70	130.23	1,078.6	-102.5	121.1	158.6	0.00	0.00	0.00
1,200.0	20.70	130.23	1,172.2	-125.3	148.1	193.9	0.00	0.00	0.00
1,300.0	20.70	130.23	1,265.7	-148.1	175.1	229.2	0.00	0.00	0.00
1,400.0	20.70	130.23	1,359.3	-170.9	202.1	264.5	0.00	0.00	0.00
1,500.0	20.70	130.23	1,452.8	-193.8	229.1	299.9	0.00	0.00	0.00
1,600.0	20.70	130.23	1,546.4	-216.6	256.1	335.2	0.00	0.00	0.00
1,700.0	20.70	130.23	1,639.9	-239.4	283.0	370.5	0.00	0.00	0.00
1,800.0	20.70	130.23	1,733.4	-262.2	310.0	405.9	0.00	0.00	0.00
1,900.0	20.70	130.23	1,827.0	-285.1	337.0	441.2	0.00	0.00	0.00
2,000.0	20.70	130.23	1,920.5	-307.9	364.0	476.5	0.00	0.00	0.00
2,100.0	20.70	130.23	2,014.1	-330.7	391.0	511.8	0.00	0.00	0.00
2,200.0	20.70	130.23	2,107.6	-353.5	418.0	547.2	0.00	0.00	0.00
2,300.0	20.70	130.23	2,201.2	-376.4	445.0	582.5	0.00	0.00	0.00
2,400.0	20.70	130.23	2,294.7	-399.2	471.9	617.8	0.00	0.00	0.00
2,500.0	20.70	130.23	2,388.3	-422.0	498.9	653.1	0.00	0.00	0.00
2,600.0	20.70	130.23	2,481.8	-444.9	525.9	688.5	0.00	0.00	0.00
2,700.0	20.70	130.23	2,575.4	-467.7	552.9	723.8	0.00	0.00	0.00
2,800.0	20.70	130.23	2,668.9	-490.5	579.9	759.1	0.00	0.00	0.00
2,900.0	20.70	130.23	2,762.4	-513.3	606.9	794.5	0.00	0.00	0.00
3,000.0	20.70	130.23	2,856.0	-536.2	633.9	829.8	0.00	0.00	0.00
3,100.0	20.70	130.23	2,949.5	-559.0	660.9	865.1	0.00	0.00	0.00
3,200.0	20.70	130.23	3,043.1	-581.8	687.8	900.4	0.00	0.00	0.00
3,300.0	20.70	130.23	3,136.6	-604.6	714.8	935.8	0.00	0.00	0.00
3,400.0	20.70	130.23	3,230.2	-627.5	741.8	971.1	0.00	0.00	0.00
3,500.0	20.70	130.23	3,323.7	-650.3	768.8	1,006.4	0.00	0.00	0.00
3,600.0	20.70	130.23	3,417.3	-673.1	795.8	1,041.8	0.00	0.00	0.00
3,700.0	20.70	130.23	3,510.8	-696.0	822.8	1,077.1	0.00	0.00	0.00
3,800.0	20.70	130.23	3,604.3	-718.8	849.8	1,112.4	0.00	0.00	0.00
3,900.0	20.70	130.23	3,697.9	-741.6	876.7	1,147.7	0.00	0.00	0.00
4,000.0	20.70	130.23	3,791.4	-764.4	903.7	1,183.1	0.00	0.00	0.00
4,100.0	20.70	130.23	3,885.0	-787.3	930.7	1,218.4	0.00	0.00	0.00
Wasatch									
4,102.2	20.70	130.23	3,887.0	-787.8	931.3	1,219.2	0.00	0.00	0.00
4,200.0	20.70	130.23	3,978.5	-810.1	957.7	1,253.7	0.00	0.00	0.00
4,300.0	20.70	130.23	4,072.1	-832.9	984.7	1,289.1	0.00	0.00	0.00
4,400.0	20.70	130.23	4,165.6	-855.7	1,011.7	1,324.4	0.00	0.00	0.00
4,500.0	20.70	130.23	4,259.2	-878.6	1,038.7	1,359.7	0.00	0.00	0.00
4,600.0	20.70	130.23	4,352.7	-901.4	1,065.7	1,395.0	0.00	0.00	0.00
4,700.0	20.70	130.23	4,446.2	-924.2	1,092.6	1,430.4	0.00	0.00	0.00
4,800.0	20.70	130.23	4,539.8	-947.0	1,119.6	1,465.7	0.00	0.00	0.00

Database:	KLXDirectional-AD	Local Co-ordinate Reference:	Well ELU A18 FED 12C-18-495 - Slot 12C-18
Company:	Caerus Oil & Gas	TVD Reference:	RKB=30' @ 8059.0usft (TBD)
Project:	Rio Blanco County, CO	MD Reference:	RKB=30' @ 8059.0usft (TBD)
Site:	ELU A18 495 Pad	North Reference:	True
Well:	ELU A18 FED 12C-18-495	Survey Calculation Method:	Minimum Curvature
Wellbore:	OH		
Design:	Design #5		

Planned Survey									
Measured Depth (usft)	Inclination (°)	Azimuth (°)	Vertical Depth (usft)	+N/-S (usft)	+E/-W (usft)	Vertical Section (usft)	Dogleg Rate (°/100usft)	Build Rate (°/100usft)	Turn Rate (°/100usft)
4,900.0	20.70	130.23	4,633.3	-969.9	1,146.6	1,501.0	0.00	0.00	0.00
5,000.0	20.70	130.23	4,726.9	-992.7	1,173.6	1,536.3	0.00	0.00	0.00
5,100.0	20.70	130.23	4,820.4	-1,015.5	1,200.6	1,571.7	0.00	0.00	0.00
5,200.0	20.70	130.23	4,914.0	-1,038.4	1,227.6	1,607.0	0.00	0.00	0.00
5,300.0	20.70	130.23	5,007.5	-1,061.2	1,254.6	1,642.3	0.00	0.00	0.00
5,400.0	20.70	130.23	5,101.1	-1,084.0	1,281.6	1,677.7	0.00	0.00	0.00
5,500.0	20.70	130.23	5,194.6	-1,106.8	1,308.5	1,713.0	0.00	0.00	0.00
5,600.0	20.70	130.23	5,288.2	-1,129.7	1,335.5	1,748.3	0.00	0.00	0.00
5,700.0	20.70	130.23	5,381.7	-1,152.5	1,362.5	1,783.6	0.00	0.00	0.00
5,800.0	20.70	130.23	5,475.2	-1,175.3	1,389.5	1,819.0	0.00	0.00	0.00
5,900.0	20.70	130.23	5,568.8	-1,198.1	1,416.5	1,854.3	0.00	0.00	0.00
6,000.0	20.70	130.23	5,662.3	-1,221.0	1,443.5	1,889.6	0.00	0.00	0.00
6,100.0	20.70	130.23	5,755.9	-1,243.8	1,470.5	1,925.0	0.00	0.00	0.00
6,200.0	20.70	130.23	5,849.4	-1,266.6	1,497.4	1,960.3	0.00	0.00	0.00
6,300.0	20.70	130.23	5,943.0	-1,289.5	1,524.4	1,995.6	0.00	0.00	0.00
6,400.0	20.70	130.23	6,036.5	-1,312.3	1,551.4	2,030.9	0.00	0.00	0.00
6,500.0	20.70	130.23	6,130.1	-1,335.1	1,578.4	2,066.3	0.00	0.00	0.00
6,600.0	20.70	130.23	6,223.6	-1,357.9	1,605.4	2,101.6	0.00	0.00	0.00
6,700.0	20.70	130.23	6,317.1	-1,380.8	1,632.4	2,136.9	0.00	0.00	0.00
6,800.0	20.70	130.23	6,410.7	-1,403.6	1,659.4	2,172.3	0.00	0.00	0.00
Wasatch G									
6,828.1	20.70	130.23	6,437.0	-1,410.0	1,667.0	2,182.2	0.00	0.00	0.00
6,900.0	20.70	130.23	6,504.2	-1,426.4	1,686.4	2,207.6	0.00	0.00	0.00
7,000.0	20.70	130.23	6,597.8	-1,449.2	1,713.3	2,242.9	0.00	0.00	0.00
7,100.0	20.70	130.23	6,691.3	-1,472.1	1,740.3	2,278.2	0.00	0.00	0.00
7,200.0	20.70	130.23	6,784.9	-1,494.9	1,767.3	2,313.6	0.00	0.00	0.00
Fort Union									
7,266.4	20.70	130.23	6,847.0	-1,510.1	1,785.2	2,337.0	0.00	0.00	0.00
7,300.0	20.70	130.23	6,878.4	-1,517.7	1,794.3	2,348.9	0.00	0.00	0.00
7,400.0	20.70	130.23	6,972.0	-1,540.5	1,821.3	2,384.2	0.00	0.00	0.00
7,500.0	20.70	130.23	7,065.5	-1,563.4	1,848.3	2,419.5	0.00	0.00	0.00
7,600.0	20.70	130.23	7,159.0	-1,586.2	1,875.3	2,454.9	0.00	0.00	0.00
7,700.0	20.70	130.23	7,252.6	-1,609.0	1,902.2	2,490.2	0.00	0.00	0.00
7,800.0	20.70	130.23	7,346.1	-1,631.9	1,929.2	2,525.5	0.00	0.00	0.00
7,900.0	20.70	130.23	7,439.7	-1,654.7	1,956.2	2,560.9	0.00	0.00	0.00
8,000.0	20.70	130.23	7,533.2	-1,677.5	1,983.2	2,596.2	0.00	0.00	0.00
8,100.0	20.70	130.23	7,626.8	-1,700.3	2,010.2	2,631.5	0.00	0.00	0.00
8,200.0	20.70	130.23	7,720.3	-1,723.2	2,037.2	2,666.8	0.00	0.00	0.00
8,300.0	20.70	130.23	7,813.9	-1,746.0	2,064.2	2,702.2	0.00	0.00	0.00
8,400.0	20.70	130.23	7,907.4	-1,768.8	2,091.2	2,737.5	0.00	0.00	0.00
8,500.0	20.70	130.23	8,001.0	-1,791.6	2,118.1	2,772.8	0.00	0.00	0.00
8,600.0	20.70	130.23	8,094.5	-1,814.5	2,145.1	2,808.2	0.00	0.00	0.00
Drop 3° / 100'									
8,687.1	20.70	130.23	8,175.9	-1,834.3	2,168.6	2,838.9	0.00	0.00	0.00
8,700.0	20.31	130.23	8,188.1	-1,837.3	2,172.1	2,843.4	3.00	-3.00	0.00
8,800.0	17.31	130.23	8,282.7	-1,858.1	2,196.7	2,875.7	3.00	-3.00	0.00
8,900.0	14.31	130.23	8,378.9	-1,875.7	2,217.5	2,902.9	3.00	-3.00	0.00
9,000.0	11.31	130.23	8,476.4	-1,890.0	2,234.4	2,925.1	3.00	-3.00	0.00
9,100.0	8.31	130.23	8,574.9	-1,901.0	2,247.4	2,942.1	3.00	-3.00	0.00
9,200.0	5.31	130.23	8,674.2	-1,908.7	2,256.5	2,953.9	3.00	-3.00	0.00
9,300.0	2.31	130.23	8,774.0	-1,913.0	2,261.6	2,960.6	3.00	-3.00	0.00
EOD @ Vertical / Build 1.5° / 100' - Ohio Creek									
9,377.0	0.00	0.00	8,851.0	-1,914.0	2,262.7	2,962.1	3.00	-3.00	0.00
9,400.0	0.34	240.00	8,874.0	-1,914.0	2,262.7	2,962.1	1.50	1.50	0.00

Database:	KLXDirectional-AD	Local Co-ordinate Reference:	Well ELU A18 FED 12C-18-495 - Slot 12C-18
Company:	Caerus Oil & Gas	TVD Reference:	RKB=30' @ 8059.0usft (TBD)
Project:	Rio Blanco County, CO	MD Reference:	RKB=30' @ 8059.0usft (TBD)
Site:	ELU A18 495 Pad	North Reference:	True
Well:	ELU A18 FED 12C-18-495	Survey Calculation Method:	Minimum Curvature
Wellbore:	OH		
Design:	Design #5		

Planned Survey									
Measured Depth (usft)	Inclination (°)	Azimuth (°)	Vertical Depth (usft)	+N/-S (usft)	+E/-W (usft)	Vertical Section (usft)	Dogleg Rate (°/100usft)	Build Rate (°/100usft)	Turn Rate (°/100usft)
EOB @ 1.27° Inc. / 240.00° Azm									
9,461.8	1.27	240.00	8,935.7	-1,914.4	2,261.9	2,961.8	1.50	1.50	0.00
9,500.0	1.27	240.00	8,974.0	-1,914.9	2,261.2	2,961.6	0.00	0.00	0.00
9,600.0	1.27	240.00	9,073.9	-1,916.0	2,259.3	2,960.9	0.00	0.00	0.00
9,700.0	1.27	240.00	9,173.9	-1,917.1	2,257.4	2,960.2	0.00	0.00	0.00
9,800.0	1.27	240.00	9,273.9	-1,918.2	2,255.4	2,959.5	0.00	0.00	0.00
9,900.0	1.27	240.00	9,373.9	-1,919.3	2,253.5	2,958.9	0.00	0.00	0.00
10,000.0	1.27	240.00	9,473.8	-1,920.4	2,251.6	2,958.2	0.00	0.00	0.00
Williams Fork									
10,027.2	1.27	240.00	9,501.0	-1,920.7	2,251.1	2,958.0	0.00	0.00	0.00
10,100.0	1.27	240.00	9,573.8	-1,921.5	2,249.7	2,957.5	0.00	0.00	0.00
10,200.0	1.27	240.00	9,673.8	-1,922.6	2,247.8	2,956.8	0.00	0.00	0.00
10,300.0	1.27	240.00	9,773.8	-1,923.7	2,245.8	2,956.1	0.00	0.00	0.00
10,400.0	1.27	240.00	9,873.7	-1,924.8	2,243.9	2,955.4	0.00	0.00	0.00
10,500.0	1.27	240.00	9,973.7	-1,925.9	2,242.0	2,954.8	0.00	0.00	0.00
10,600.0	1.27	240.00	10,073.7	-1,927.1	2,240.1	2,954.1	0.00	0.00	0.00
10,700.0	1.27	240.00	10,173.7	-1,928.2	2,238.2	2,953.4	0.00	0.00	0.00
10,800.0	1.27	240.00	10,273.6	-1,929.3	2,236.2	2,952.7	0.00	0.00	0.00
10,900.0	1.27	240.00	10,373.6	-1,930.4	2,234.3	2,952.0	0.00	0.00	0.00
11,000.0	1.27	240.00	10,473.6	-1,931.5	2,232.4	2,951.3	0.00	0.00	0.00
11,100.0	1.27	240.00	10,573.6	-1,932.6	2,230.5	2,950.7	0.00	0.00	0.00
11,200.0	1.27	240.00	10,673.5	-1,933.7	2,228.5	2,950.0	0.00	0.00	0.00
11,300.0	1.27	240.00	10,773.5	-1,934.8	2,226.6	2,949.3	0.00	0.00	0.00
11,400.0	1.27	240.00	10,873.5	-1,935.9	2,224.7	2,948.6	0.00	0.00	0.00
11,500.0	1.27	240.00	10,973.5	-1,937.0	2,222.8	2,947.9	0.00	0.00	0.00
11,600.0	1.27	240.00	11,073.4	-1,938.1	2,220.9	2,947.2	0.00	0.00	0.00
11,700.0	1.27	240.00	11,173.4	-1,939.3	2,218.9	2,946.6	0.00	0.00	0.00
11,800.0	1.27	240.00	11,273.4	-1,940.4	2,217.0	2,945.9	0.00	0.00	0.00
11,900.0	1.27	240.00	11,373.4	-1,941.5	2,215.1	2,945.2	0.00	0.00	0.00
12,000.0	1.27	240.00	11,473.3	-1,942.6	2,213.2	2,944.5	0.00	0.00	0.00
12,100.0	1.27	240.00	11,573.3	-1,943.7	2,211.3	2,943.8	0.00	0.00	0.00
12,200.0	1.27	240.00	11,673.3	-1,944.8	2,209.3	2,943.1	0.00	0.00	0.00
12,300.0	1.27	240.00	11,773.3	-1,945.9	2,207.4	2,942.5	0.00	0.00	0.00
12,400.0	1.27	240.00	11,873.2	-1,947.0	2,205.5	2,941.8	0.00	0.00	0.00
12,500.0	1.27	240.00	11,973.2	-1,948.1	2,203.6	2,941.1	0.00	0.00	0.00
12,600.0	1.27	240.00	12,073.2	-1,949.2	2,201.7	2,940.4	0.00	0.00	0.00
12,700.0	1.27	240.00	12,173.2	-1,950.3	2,199.7	2,939.7	0.00	0.00	0.00
12,800.0	1.27	240.00	12,273.1	-1,951.5	2,197.8	2,939.0	0.00	0.00	0.00
12,900.0	1.27	240.00	12,373.1	-1,952.6	2,195.9	2,938.4	0.00	0.00	0.00
Cameo									
12,927.9	1.27	240.00	12,401.0	-1,952.9	2,195.4	2,938.2	0.00	0.00	0.00
13,000.0	1.27	240.00	12,473.1	-1,953.7	2,194.0	2,937.7	0.00	0.00	0.00
13,100.0	1.27	240.00	12,573.1	-1,954.8	2,192.1	2,937.0	0.00	0.00	0.00
13,200.0	1.27	240.00	12,673.0	-1,955.9	2,190.1	2,936.3	0.00	0.00	0.00
13,300.0	1.27	240.00	12,773.0	-1,957.0	2,188.2	2,935.6	0.00	0.00	0.00
13,400.0	1.27	240.00	12,873.0	-1,958.1	2,186.3	2,934.9	0.00	0.00	0.00
Rollins									
13,428.0	1.27	240.00	12,901.0	-1,958.4	2,185.8	2,934.8	0.00	0.00	0.00
13,500.0	1.27	240.00	12,973.0	-1,959.2	2,184.4	2,934.3	0.00	0.00	0.00
13,600.0	1.27	240.00	13,072.9	-1,960.3	2,182.4	2,933.6	0.00	0.00	0.00
13,700.0	1.27	240.00	13,172.9	-1,961.4	2,180.5	2,932.9	0.00	0.00	0.00
13,800.0	1.27	240.00	13,272.9	-1,962.5	2,178.6	2,932.2	0.00	0.00	0.00
13,900.0	1.27	240.00	13,372.9	-1,963.6	2,176.7	2,931.5	0.00	0.00	0.00

Database:	KLXDirectional-AD	Local Co-ordinate Reference:	Well ELU A18 FED 12C-18-495 - Slot 12C-18
Company:	Caerus Oil & Gas	TVD Reference:	RKB=30' @ 8059.0usft (TBD)
Project:	Rio Blanco County, CO	MD Reference:	RKB=30' @ 8059.0usft (TBD)
Site:	ELU A18 495 Pad	North Reference:	True
Well:	ELU A18 FED 12C-18-495	Survey Calculation Method:	Minimum Curvature
Wellbore:	OH		
Design:	Design #5		

Planned Survey									
Measured Depth (usft)	Inclination (°)	Azimuth (°)	Vertical Depth (usft)	+N/-S (usft)	+E/-W (usft)	Vertical Section (usft)	Dogleg Rate (°/100usft)	Build Rate (°/100usft)	Turn Rate (°/100usft)
TD @ 13928.1' MD / 13401.0' TVD									
13,928.1	1.27	240.00	13,401.0	-1,964.0	2,176.1	2,931.3	0.00	0.00	0.00

Design Targets									
Target Name - hit/miss target - Shape	Dip Angle (°)	Dip Dir. (°)	TVD (usft)	+N/-S (usft)	+E/-W (usft)	Northing (usft)	Easting (usft)	Latitude	Longitude
12C-18 - OHCR - plan hits target center - Point	0.00	0.00	8,851.0	-1,914.0	2,262.7	14,431,389.97	2,457,348.75	39.703708	-108.095738
12C-18 - PBHL - plan hits target center - Ellipse (radii L100.0 W50.0 on 240.00 azi)	0.00	0.00	13,401.0	-1,964.0	2,176.1	14,431,337.20	2,457,263.80	39.703571	-108.096046

Formations						
Measured Depth (usft)	Vertical Depth (usft)	Name	Lithology	Dip (°)	Dip Direction (°)	
4,102.2	3,887.0	Wasatch				
6,828.1	6,437.0	Wasatch G				
7,266.4	6,847.0	Fort Union				
9,377.0	8,851.0	Ohio Creek				
10,027.2	9,501.0	Williams Fork				
12,927.9	12,401.0	Cameo				
13,428.0	12,901.0	Rollins				

Plan Annotations				
Measured Depth (usft)	Vertical Depth (usft)	Local Coordinates		Comment
		+N/-S (usft)	+E/-W (usft)	
310.0	310.0	0.0	0.0	Build 3° / 100'
1,000.0	985.1	-79.6	94.1	EOB @ 20.70° Inc. / 130.23° Azm
8,687.1	8,175.9	-1,834.3	2,168.6	Drop 3° / 100'
9,377.0	8,851.0	-1,914.0	2,262.7	EOD @ Vertical / Build 1.5° / 100'
9,461.8	8,935.7	-1,914.4	2,261.9	EOB @ 1.27° Inc. / 240.00° Azm
13,928.1	13,401.0	-1,964.0	2,176.1	TD @ 13928.1' MD / 13401.0' TVD