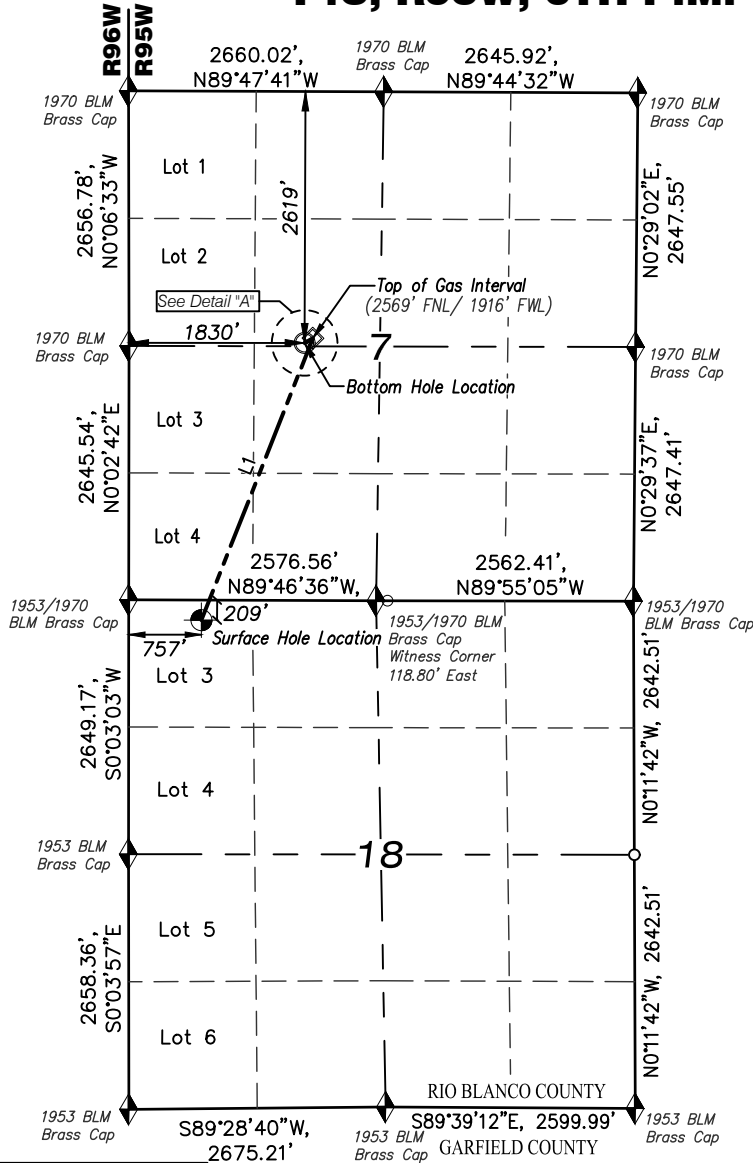


# T4S, R95W, 6TH P.M.

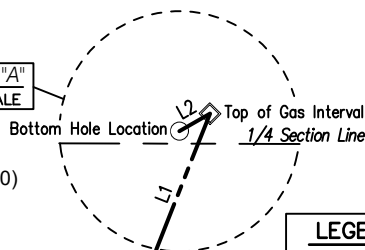


LINE TABLE		
LINE	DIRECTION	LENGTH
L1	N21°34'34\"E	3159.55'
L2	S60°01'40\"W	100.00'

## NOTES:

- Survey Datum:  
Low Distortion Projection Parameters  
Datum NAD83(2011) Epoch 2010.000 (GRS80)  
Projection Type = Transverse Mercator  
Origin Latitude= 39°40'00\" North  
Origin Longitude = 108°04'00\" West  
Scale Reduction = 1.000 377 882 Unitless  
Units= U.S. Survey Foot (USSF)  
GEOID12a NAVD88 (Basis of Elevation)
- Well footages are measured at right angles to section lines.
- PDOP Reading: 1.4 Operator: B. Taggart (Rule No. 215)
- Improvements: See Location Drawing (Figure #6) for all visible improvements within 2000 ft. of the working pad surface.

Detail "A"  
NO SCALE



## LEGEND

- ◆ SECTION CORNER LOCATED
- SURFACE HOLE LOCATION
- BOTTOM HOLE LOCATION
- ◇ TOP OF GAS INTERVAL
- COMPUTED

## ELU A18 FED 14B-7 495 WELL

UNGRADED GROUND  
ELEVATION = 8038.3'

## NAD 83 (SURFACE LOCATION)

LAT: 39° 42' 32.75\" N (39.709096 N)  
LONG: 108° 06' 17.94\" W (108.104983 W)

## NAD27 (SURFACE LOCATION)

LAT: 39° 42' 32.83\" N (39.709121 N)  
LONG: 108° 06' 15.65\" W (108.104348 W)

## UTM NAD 27 (ZONE 12) US Feet

N: 14433282.83  
E: 2454862.77

## NAD 83 (BOTTOM HOLE LOCATION)

LAT: 39° 43' 01.28\" N (39.717023 N)  
LONG: 108° 06' 04.20\" W (108.101166 W)

## NAD27 (BOTTOM HOLE LOCATION)

LAT: 39° 43' 01.37\" N (39.717048 N)  
LONG: 108° 06' 01.91\" W (108.100532 W)

## UTM NAD 27 (ZONE 12) US Feet

N: 14436204.60  
E: 2455842.90

## NAD 83 (TOP OF GAS INTERVAL)

LAT: 39° 43' 01.78\" N (39.717160 N)  
LONG: 108° 06' 03.09\" W (108.100858 W)

## NAD27 (TOP OF GAS INTERVAL)

LAT: 39° 43' 01.87\" N (39.717185 N)  
LONG: 108° 06' 00.81\" W (108.100224 W)

## UTM NAD 27 (ZONE 12) US Feet

N: 14436257.37  
E: 2455927.84

## CERTIFICATE OF SURVEYOR

This is to certify that the this plat was prepared from field notes taken during an actual survey made by me or under my supervision and that the location has been staked on the ground as shown on the plat and that the same are true and correct to the best of my knowledge and belief.



Ted T. Taggart, Registered Land Surveyor  
Registration No., 37075 State of Colorado

## CAERUS OIL & GAS LLC

ELU A18 FED 14B-7 495 WELL  
LOT 3 (NW1/4 NW1/4),  
SECTION 18, T4S, R95W, 6TH P.M.  
RIO BLANCO COUNTY, COLORADO

## WELL LOCATION PLAT

SURVEYED BY: JT/BT	DATE: 5/06/22	
DRAWN BY: SGT	DATE: 6/13/24	PROJECT NO: 20-13-04



WASATCH SURVEYING ASSOCIATES  
906 MAIN STREET, EVANSTON, WY 82930  
(307) 789-4545

