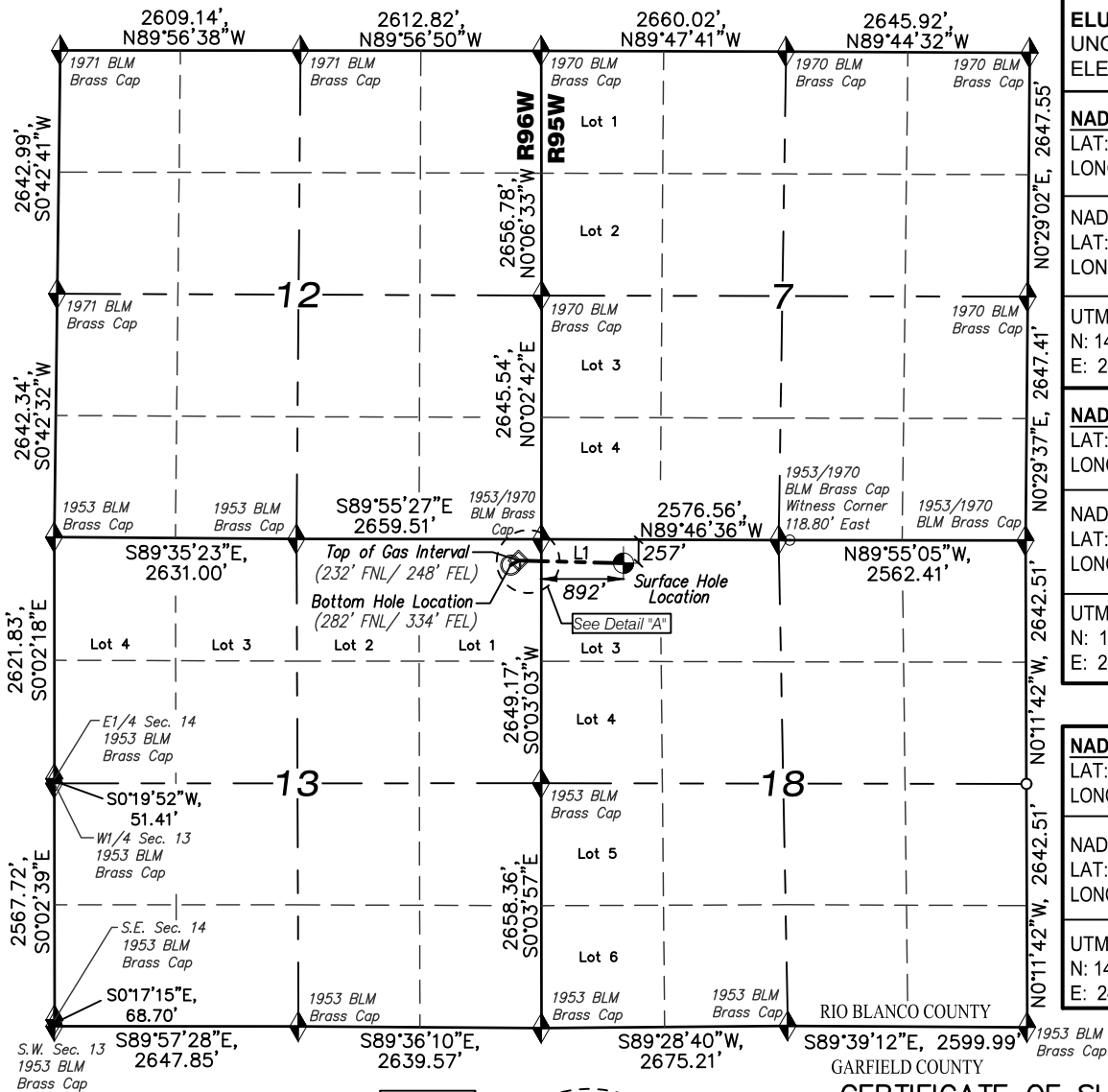


T4S, R96W, 6TH P.M.

T4S, R95W, 6TH P.M.



ELU A18 FED 25D-13 496 WELL
UNGRADED GROUND
ELEVATION = 8034.1'

NAD 83 (SURFACE LOCATION)
LAT: 39° 42' 32.26" N (39.708961 N)
LONG: 108° 06' 16.21" W (108.104502 W)

NAD27 (SURFACE LOCATION)
LAT: 39° 42' 32.35" N (39.708986 N)
LONG: 108° 06' 13.92" W (108.103867 W)

UTM NAD 27 (ZONE 12) US Feet
N: 14433238.20
E: 2454999.67

NAD 83 (BOTTOM HOLE LOCATION)
LAT: 39° 42' 32.05" N (39.708903 N)
LONG: 108° 06' 31.89" W (108.108858 W)

NAD27 (BOTTOM HOLE LOCATION)
LAT: 39° 42' 32.14" N (39.708927 N)
LONG: 108° 06' 29.60" W (108.108223 W)

UTM NAD 27 (ZONE 12) US Feet
N: 14433177.30
E: 2453774.90

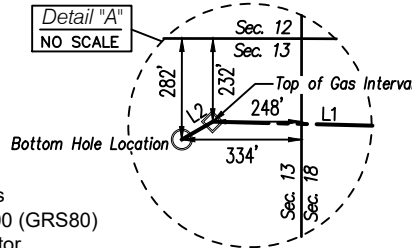
NAD 83 (TOP OF GAS INTERVAL)
LAT: 39° 42' 32.54" N (39.709040 N)
LONG: 108° 06' 30.78" W (108.108550 W)

NAD27 (TOP OF GAS INTERVAL)
LAT: 39° 42' 32.63" N (39.709065 N)
LONG: 108° 06' 28.50" W (108.107916 W)

UTM NAD 27 (ZONE 12) US Feet
N: 14433230.07
E: 2453859.84

LINE TABLE		
LINE	DIRECTION	LENGTH
L1	N88°32'01"W	1139.89'
L2	S60°01'40"W	100.00'

Detail "A"
NO SCALE



NOTES:

- Survey Datum:
Low Distortion Projection Parameters
Datum NAD83(2011) Epoch 2010.000 (GRS80)
Projection Type = Transverse Mercator
Origin Latitude = 39°40'00" North
Origin Longitude = 108°04'00" West
Scale Reduction = 1.000 377 882 Unitless
Units = U.S. Survey Foot (USSF)
GEOID12a NAVD88 (Basis of Elevation)
- Well footages are measured at right angles to section lines.
- PDOP Reading: 1.4 Operator: B. Taggart (Rule No. 215)
- Improvements: See Location Drawing (Figure #6) for all visible improvements within 2000 ft. of the working pad surface.

LEGEND

- ◆ SECTION CORNER LOCATED
- ⊙ SURFACE HOLE LOCATION
- BOTTOM HOLE LOCATION
- ◇ TOP OF GAS INTERVAL
- COMPUTED



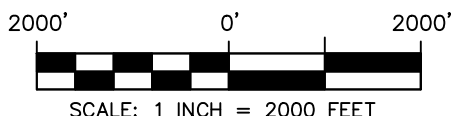
Ted T. Taggart, Registered Land Surveyor
Registration No., 37075 State of Colorado

CAERUS OIL & GAS LLC

ELU A18 FED 25D-13 496 WELL
LOT 3 (NW1/4 NW1/4),
SECTION 18, T4S, R95W, 6TH P.M.
RIO BLANCO COUNTY, COLORADO

WELL LOCATION PLAT

SURVEYED BY: JT/BT	DATE: 5/06/22	
DRAWN BY: SGT	DATE: 6/13/24	PROJECT NO: 20-13-04



WASATCH SURVEYING ASSOCIATES
906 MAIN STREET, EVANSTON, WY 82930
(307) 789-4545

