

Project: Rio Blanco County, CO  
Site: ELU A18 495 Pad  
Well: ELU A18 FED 15D-18-495  
Wellbore: OH  
Design: Design #1  
Latitude: 39.709062  
Longitude: -108.104138  
Ground Level: 8029.0  
RKB=30' @ 8059.0usft (TBD)

PROJECT DETAILS: Rio Blanco County, CO  
Geodetic System: Universal Transverse Mercator (US Survey Feet)  
Datum: NAD 1927 - Western US  
Ellipsoid: Clarke 1866  
Zone: Zone 12N (114 W to 108 W)  
System Datum: Mean Sea Level

REFERENCE INFORMATION  
Vertical (TVD) Reference: RKB=30' @ 8059.0usft (TBD)  
Section (VS) Reference: Slot - 15D-18(0.0N, 0.0E)  
Measured Depth Reference: RKB=30' @ 8059.0usft (TBD)  
Calculation Method: Minimum Curvature

#### SECTION DETAILS

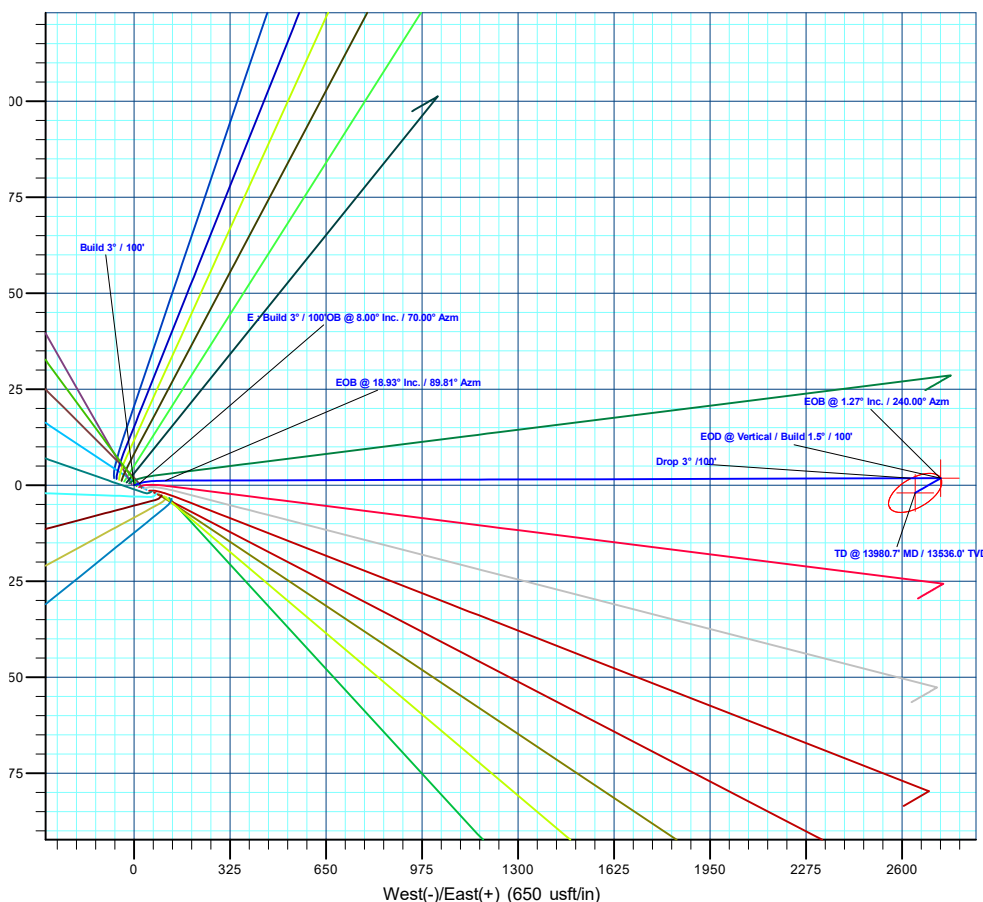
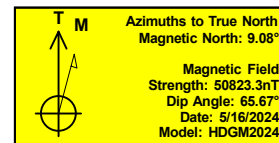
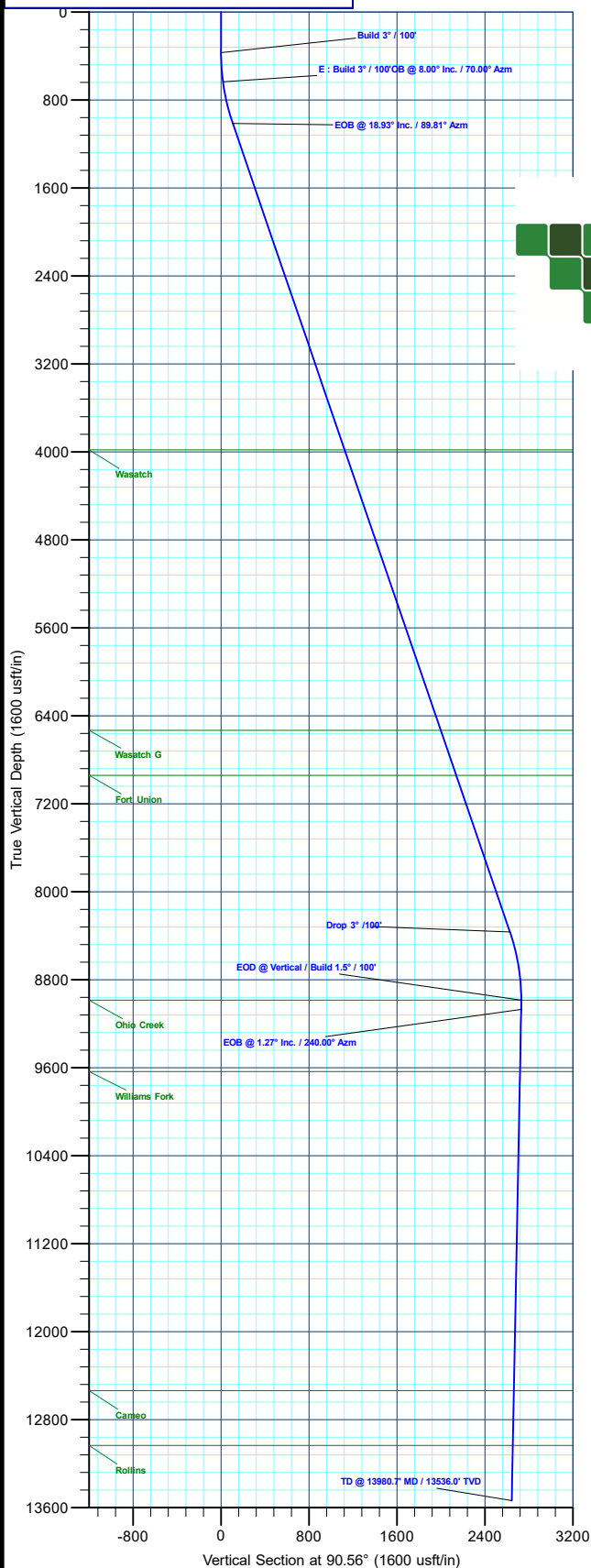
MD	Inc	Azi	TVD	+N/-S	+E/-W	Dleg	TFace	VSect	Annotation
0.0	0.00	0.00	0.0	0.0	0.0	0.00	0.00	0.0	Build 3° / 100'
370.0	0.00	0.00	370.0	0.0	0.0	0.00	0.00	0.0	E : Build 3° / 100°OB @ 8.00° Inc. / 70.00° Azm
636.7	8.00	70.00	635.8	6.4	17.5	3.00	70.00	17.4	EOB @ 18.93° Inc. / 89.81° Azm
1026.9	18.93	89.81	1014.9	15.9	106.6	3.00	32.81	106.4	Drop 3° / 100'
8798.7	18.93	89.81	8366.5	24.0	2627.5	0.00	0.00	2627.2	EOD @ Vertical / Build 1.5° / 100'
9429.6	0.00	0.00	8986.0	24.4	2730.8	3.00	180.00	2730.4	EOB @ 1.27° Inc. / 240.00° Azm
9514.4	1.27	240.00	9070.7	23.9	2730.0	1.50	240.00	2729.6	TD @ 13980.7' MD / 13536.0' TVD
13980.7	1.27	240.00	13536.0	-25.6	2644.2	0.00	0.00	2644.3	

#### DESIGN TARGET DETAILS

Name	TVD	+N/-S	+E/-W	Northing	Easting	Latitude	Longitude
15D-18 - OHCR	8986.0	24.4	2730.8	14433375.87	2457651.24	39.709128	-108.094435
15D-18 - PBHL	13536.0	-25.6	2644.2	14433323.10	2457566.30	39.708991	-108.094743

#### WELL DETAILS: ELU A18 FED 15D-18-495

		Ground Level : 8029.0			
+N/-S	+E/-W	Northing	Easting	Latitude	Longitude
0.0	0.0	14433263.30	2454922.66	39.709062	-108.104138 15D-18



Plan: Design #1 (ELU A18 FED 15D-18-495/OH)

Created By: Will Jircik

Date: 22:06, June 09 2024



## **Caerus Oil & Gas**

**Rio Blanco County, CO**

**ELU A18 495 Pad**

**ELU A18 FED 15D-18-495 - Slot 15D-18**

**OH**

**Plan: Design #1**

## **KLX Well Planning Report**

**09 June, 2024**



<b>Database:</b>	KLXDirectional-AD	<b>Local Co-ordinate Reference:</b>	Well ELU A18 FED 15D-18-495 - Slot 15D-18
<b>Company:</b>	Caerus Oil & Gas	<b>TVD Reference:</b>	RKB=30' @ 8059.0usft (TBD)
<b>Project:</b>	Rio Blanco County, CO	<b>MD Reference:</b>	RKB=30' @ 8059.0usft (TBD)
<b>Site:</b>	ELU A18 495 Pad	<b>North Reference:</b>	True
<b>Well:</b>	ELU A18 FED 15D-18-495	<b>Survey Calculation Method:</b>	Minimum Curvature
<b>Wellbore:</b>	OH		
<b>Design:</b>	Design #1		

<b>Project</b>	Rio Blanco County, CO		
<b>Map System:</b>	Universal Transverse Mercator (US Survey Feet)	<b>System Datum:</b>	Mean Sea Level
<b>Geo Datum:</b>	NAD 1927 - Western US		
<b>Map Zone:</b>	Zone 12N (114 W to 108 W)		

Site		ELU A18 495 Pad			
Site Position:		Northing:	14,433,285.62 usft	Latitude:	39.709129
From:	Map	Easting:	2,454,854.21 usft	Longitude:	-108.104378
Position Uncertainty:	0.0 usft	Slot Radius:	13-3/16 "	Grid Convergence:	1.85 °

Well	ELU A18 FED 15D-18-495 - Slot 15D-18					
Well Position	+N/-S	-24.5 usft	Northing:	14,433,263.30 usft	Latitude:	39.709062
	+E/-W	67.7 usft	Easting:	2,454,922.66 usft	Longitude:	-108.104138
Position Uncertainty		0.0 usft	Wellhead Elevation:		Ground Level:	8,029.0 usft

<b>Wellbore</b>	OH				
<b>Magnetics</b>	<b>Model Name</b>	<b>Sample Date</b>	<b>Declination (°)</b>	<b>Dip Angle (°)</b>	<b>Field Strength (nT)</b>
	HDGM2024	5/16/2024	9.08	65.67	50,823.30000000

<b>Design</b>	Design #1			
<b>Audit Notes:</b>				
<b>Version:</b>	<b>Phase:</b>	PLAN	<b>Tie On Depth:</b>	0.0
<b>Vertical Section:</b>	<b>Depth From (TVD) (usft)</b>	<b>+N/-S (usft)</b>	<b>+E/-W (usft)</b>	<b>Direction (°)</b>
	0.0	0.0	0.0	90.56

<b>Plan Sections</b>										
Measured Depth (usft)	Inclination (°)	Azimuth (°)	Vertical Depth (usft)	+N/-S (usft)	+E/-W (usft)	Dogleg Rate (°/100usft)	Build Rate (°/100usft)	Turn Rate (°/100usft)	TFO (°)	Target
0.0	0.00	0.00	0.0	0.0	0.0	0.00	0.00	0.00	0.00	
370.0	0.00	0.00	370.0	0.0	0.0	0.00	0.00	0.00	0.00	
636.7	8.00	70.00	635.8	6.4	17.5	3.00	3.00	0.00	70.00	
1,026.9	18.93	89.81	1,014.9	15.9	106.6	3.00	2.80	5.08	32.81	
8,798.7	18.93	89.81	8,366.5	24.0	2,627.5	0.00	0.00	0.00	0.00	
9,429.6	0.00	0.00	8,986.0	24.4	2,730.8	3.00	-3.00	0.00	180.00	15D-18 - OHCR
9,514.4	1.27	240.00	9,070.7	23.9	2,730.0	1.50	1.50	-141.63	240.00	
13,980.7	1.27	240.00	13,536.0	-25.6	2,644.2	0.00	0.00	0.00	0.00	15D-18 - PBHL

<b>Database:</b>	KLXDirectional-AD	<b>Local Co-ordinate Reference:</b>	Well ELU A18 FED 15D-18-495 - Slot 15D-18
<b>Company:</b>	Caerus Oil & Gas	<b>TVD Reference:</b>	RKB=30' @ 8059.0usft (TBD)
<b>Project:</b>	Rio Blanco County, CO	<b>MD Reference:</b>	RKB=30' @ 8059.0usft (TBD)
<b>Site:</b>	ELU A18 495 Pad	<b>North Reference:</b>	True
<b>Well:</b>	ELU A18 FED 15D-18-495	<b>Survey Calculation Method:</b>	Minimum Curvature
<b>Wellbore:</b>	OH		
<b>Design:</b>	Design #1		

Planned Survey									
Measured Depth (usft)	Inclination (°)	Azimuth (°)	Vertical Depth (usft)	+N/-S (usft)	+E/-W (usft)	Vertical Section (usft)	Dogleg Rate (°/100usft)	Build Rate (°/100usft)	Turn Rate (°/100usft)
0.0	0.00	0.00	0.0	0.0	0.0	0.0	0.00	0.00	0.00
100.0	0.00	0.00	100.0	0.0	0.0	0.0	0.00	0.00	0.00
200.0	0.00	0.00	200.0	0.0	0.0	0.0	0.00	0.00	0.00
300.0	0.00	0.00	300.0	0.0	0.0	0.0	0.00	0.00	0.00
<b>Build 3° / 100'</b>									
370.0	0.00	0.00	370.0	0.0	0.0	0.0	0.00	0.00	0.00
400.0	0.90	70.00	400.0	0.1	0.2	0.2	3.00	3.00	0.00
500.0	3.90	70.00	499.9	1.5	4.2	4.1	3.00	3.00	0.00
600.0	6.90	70.00	599.4	4.7	13.0	13.0	3.00	3.00	0.00
<b>E : Build 3° / 100'OB @ 8.00° Inc. / 70.00° Azm</b>									
636.7	8.00	70.00	635.8	6.4	17.5	17.4	3.00	3.00	0.00
700.0	9.65	76.15	698.4	9.1	26.8	26.7	3.00	2.61	9.71
800.0	12.40	82.44	796.5	12.6	45.6	45.4	3.00	2.75	6.29
900.0	15.25	86.45	893.6	14.8	69.3	69.2	3.00	2.84	4.01
1,000.0	18.14	89.21	989.4	15.8	98.0	97.9	3.00	2.89	2.76
<b>EOB @ 18.93° Inc. / 89.81° Azm</b>									
1,026.9	18.93	89.81	1,014.9	15.9	106.6	106.4	3.00	2.91	2.24
1,100.0	18.93	89.81	1,084.1	16.0	130.3	130.1	0.00	0.00	0.00
1,200.0	18.93	89.81	1,178.6	16.1	162.7	162.6	0.00	0.00	0.00
1,300.0	18.93	89.81	1,273.2	16.2	195.2	195.0	0.00	0.00	0.00
1,400.0	18.93	89.81	1,367.8	16.3	227.6	227.4	0.00	0.00	0.00
1,500.0	18.93	89.81	1,462.4	16.4	260.0	259.9	0.00	0.00	0.00
1,600.0	18.93	89.81	1,557.0	16.5	292.5	292.3	0.00	0.00	0.00
1,700.0	18.93	89.81	1,651.6	16.6	324.9	324.7	0.00	0.00	0.00
1,800.0	18.93	89.81	1,746.2	16.7	357.4	357.2	0.00	0.00	0.00
1,900.0	18.93	89.81	1,840.8	16.8	389.8	389.6	0.00	0.00	0.00
2,000.0	18.93	89.81	1,935.4	16.9	422.2	422.0	0.00	0.00	0.00
2,100.0	18.93	89.81	2,030.0	17.0	454.7	454.5	0.00	0.00	0.00
2,200.0	18.93	89.81	2,124.6	17.1	487.1	486.9	0.00	0.00	0.00
2,300.0	18.93	89.81	2,219.2	17.2	519.5	519.3	0.00	0.00	0.00
2,400.0	18.93	89.81	2,313.8	17.3	552.0	551.8	0.00	0.00	0.00
2,500.0	18.93	89.81	2,408.4	17.4	584.4	584.2	0.00	0.00	0.00
2,600.0	18.93	89.81	2,502.9	17.5	616.8	616.6	0.00	0.00	0.00
2,700.0	18.93	89.81	2,597.5	17.6	649.3	649.1	0.00	0.00	0.00
2,800.0	18.93	89.81	2,692.1	17.7	681.7	681.5	0.00	0.00	0.00
2,900.0	18.93	89.81	2,786.7	17.8	714.2	714.0	0.00	0.00	0.00
3,000.0	18.93	89.81	2,881.3	18.0	746.6	746.4	0.00	0.00	0.00
3,100.0	18.93	89.81	2,975.9	18.1	779.0	778.8	0.00	0.00	0.00
3,200.0	18.93	89.81	3,070.5	18.2	811.5	811.3	0.00	0.00	0.00
3,300.0	18.93	89.81	3,165.1	18.3	843.9	843.7	0.00	0.00	0.00
3,400.0	18.93	89.81	3,259.7	18.4	876.3	876.1	0.00	0.00	0.00
3,500.0	18.93	89.81	3,354.3	18.5	908.8	908.6	0.00	0.00	0.00
3,600.0	18.93	89.81	3,448.9	18.6	941.2	941.0	0.00	0.00	0.00
3,700.0	18.93	89.81	3,543.5	18.7	973.7	973.4	0.00	0.00	0.00
3,800.0	18.93	89.81	3,638.1	18.8	1,006.1	1,005.9	0.00	0.00	0.00
3,900.0	18.93	89.81	3,732.7	18.9	1,038.5	1,038.3	0.00	0.00	0.00
4,000.0	18.93	89.81	3,827.2	19.0	1,071.0	1,070.7	0.00	0.00	0.00
4,100.0	18.93	89.81	3,921.8	19.1	1,103.4	1,103.2	0.00	0.00	0.00
<b>Wasatch</b>									
4,164.7	18.93	89.81	3,983.0	19.2	1,124.4	1,124.1	0.00	0.00	0.00
4,200.0	18.93	89.81	4,016.4	19.2	1,135.8	1,135.6	0.00	0.00	0.00
4,300.0	18.93	89.81	4,111.0	19.3	1,168.3	1,168.0	0.00	0.00	0.00
4,400.0	18.93	89.81	4,205.6	19.4	1,200.7	1,200.5	0.00	0.00	0.00
4,500.0	18.93	89.81	4,300.2	19.5	1,233.2	1,232.9	0.00	0.00	0.00

<b>Database:</b>	KLXDirectional-AD	<b>Local Co-ordinate Reference:</b>	Well ELU A18 FED 15D-18-495 - Slot 15D-18
<b>Company:</b>	Caerus Oil & Gas	<b>TVD Reference:</b>	RKB=30' @ 8059.0usft (TBD)
<b>Project:</b>	Rio Blanco County, CO	<b>MD Reference:</b>	RKB=30' @ 8059.0usft (TBD)
<b>Site:</b>	ELU A18 495 Pad	<b>North Reference:</b>	True
<b>Well:</b>	ELU A18 FED 15D-18-495	<b>Survey Calculation Method:</b>	Minimum Curvature
<b>Wellbore:</b>	OH		
<b>Design:</b>	Design #1		

Planned Survey									
Measured Depth (usft)	Inclination (°)	Azimuth (°)	Vertical Depth (usft)	+N/-S (usft)	+E/-W (usft)	Vertical Section (usft)	Dogleg Rate (°/100usft)	Build Rate (°/100usft)	Turn Rate (°/100usft)
4,600.0	18.93	89.81	4,394.8	19.6	1,265.6	1,265.3	0.00	0.00	0.00
4,700.0	18.93	89.81	4,489.4	19.7	1,298.0	1,297.8	0.00	0.00	0.00
4,800.0	18.93	89.81	4,584.0	19.8	1,330.5	1,330.2	0.00	0.00	0.00
4,900.0	18.93	89.81	4,678.6	19.9	1,362.9	1,362.6	0.00	0.00	0.00
5,000.0	18.93	89.81	4,773.2	20.0	1,395.3	1,395.1	0.00	0.00	0.00
5,100.0	18.93	89.81	4,867.8	20.2	1,427.8	1,427.5	0.00	0.00	0.00
5,200.0	18.93	89.81	4,962.4	20.3	1,460.2	1,459.9	0.00	0.00	0.00
5,300.0	18.93	89.81	5,057.0	20.4	1,492.6	1,492.4	0.00	0.00	0.00
5,400.0	18.93	89.81	5,151.6	20.5	1,525.1	1,524.8	0.00	0.00	0.00
5,500.0	18.93	89.81	5,246.1	20.6	1,557.5	1,557.3	0.00	0.00	0.00
5,600.0	18.93	89.81	5,340.7	20.7	1,590.0	1,589.7	0.00	0.00	0.00
5,700.0	18.93	89.81	5,435.3	20.8	1,622.4	1,622.1	0.00	0.00	0.00
5,800.0	18.93	89.81	5,529.9	20.9	1,654.8	1,654.6	0.00	0.00	0.00
5,900.0	18.93	89.81	5,624.5	21.0	1,687.3	1,687.0	0.00	0.00	0.00
6,000.0	18.93	89.81	5,719.1	21.1	1,719.7	1,719.4	0.00	0.00	0.00
6,100.0	18.93	89.81	5,813.7	21.2	1,752.1	1,751.9	0.00	0.00	0.00
6,200.0	18.93	89.81	5,908.3	21.3	1,784.6	1,784.3	0.00	0.00	0.00
6,300.0	18.93	89.81	6,002.9	21.4	1,817.0	1,816.7	0.00	0.00	0.00
6,400.0	18.93	89.81	6,097.5	21.5	1,849.5	1,849.2	0.00	0.00	0.00
6,500.0	18.93	89.81	6,192.1	21.6	1,881.9	1,881.6	0.00	0.00	0.00
6,600.0	18.93	89.81	6,286.7	21.7	1,914.3	1,914.0	0.00	0.00	0.00
6,700.0	18.93	89.81	6,381.3	21.8	1,946.8	1,946.5	0.00	0.00	0.00
6,800.0	18.93	89.81	6,475.9	21.9	1,979.2	1,978.9	0.00	0.00	0.00
<b>Wasatch G</b>									
6,860.4	18.93	89.81	6,533.0	22.0	1,998.8	1,998.5	0.00	0.00	0.00
6,900.0	18.93	89.81	6,570.4	22.0	2,011.6	2,011.3	0.00	0.00	0.00
7,000.0	18.93	89.81	6,665.0	22.1	2,044.1	2,043.8	0.00	0.00	0.00
7,100.0	18.93	89.81	6,759.6	22.3	2,076.5	2,076.2	0.00	0.00	0.00
7,200.0	18.93	89.81	6,854.2	22.4	2,109.0	2,108.6	0.00	0.00	0.00
<b>Fort Union</b>									
7,293.9	18.93	89.81	6,943.0	22.5	2,139.4	2,139.1	0.00	0.00	0.00
7,300.0	18.93	89.81	6,948.8	22.5	2,141.4	2,141.1	0.00	0.00	0.00
7,400.0	18.93	89.81	7,043.4	22.6	2,173.8	2,173.5	0.00	0.00	0.00
7,500.0	18.93	89.81	7,138.0	22.7	2,206.3	2,205.9	0.00	0.00	0.00
7,600.0	18.93	89.81	7,232.6	22.8	2,238.7	2,238.4	0.00	0.00	0.00
7,700.0	18.93	89.81	7,327.2	22.9	2,271.1	2,270.8	0.00	0.00	0.00
7,800.0	18.93	89.81	7,421.8	23.0	2,303.6	2,303.2	0.00	0.00	0.00
7,900.0	18.93	89.81	7,516.4	23.1	2,336.0	2,335.7	0.00	0.00	0.00
8,000.0	18.93	89.81	7,611.0	23.2	2,368.4	2,368.1	0.00	0.00	0.00
8,100.0	18.93	89.81	7,705.6	23.3	2,400.9	2,400.5	0.00	0.00	0.00
8,200.0	18.93	89.81	7,800.2	23.4	2,433.3	2,433.0	0.00	0.00	0.00
8,300.0	18.93	89.81	7,894.7	23.5	2,465.8	2,465.4	0.00	0.00	0.00
8,400.0	18.93	89.81	7,989.3	23.6	2,498.2	2,497.9	0.00	0.00	0.00
8,500.0	18.93	89.81	8,083.9	23.7	2,530.6	2,530.3	0.00	0.00	0.00
8,600.0	18.93	89.81	8,178.5	23.8	2,563.1	2,562.7	0.00	0.00	0.00
8,700.0	18.93	89.81	8,273.1	23.9	2,595.5	2,595.2	0.00	0.00	0.00
<b>Drop 3° /100'</b>									
8,798.7	18.93	89.81	8,366.5	24.0	2,627.5	2,627.2	0.00	0.00	0.00
8,800.0	18.89	89.81	8,367.7	24.0	2,627.9	2,627.6	3.00	-3.00	0.00
8,900.0	15.89	89.81	8,463.1	24.1	2,657.8	2,657.5	3.00	-3.00	0.00
9,000.0	12.89	89.81	8,560.0	24.2	2,682.7	2,682.3	3.00	-3.00	0.00
9,100.0	9.89	89.81	8,658.0	24.3	2,702.4	2,702.1	3.00	-3.00	0.00
9,200.0	6.89	89.81	8,756.9	24.3	2,717.0	2,716.6	3.00	-3.00	0.00

<b>Database:</b>	KLXDirectional-AD	<b>Local Co-ordinate Reference:</b>	Well ELU A18 FED 15D-18-495 - Slot 15D-18
<b>Company:</b>	Caerus Oil & Gas	<b>TVD Reference:</b>	RKB=30' @ 8059.0usft (TBD)
<b>Project:</b>	Rio Blanco County, CO	<b>MD Reference:</b>	RKB=30' @ 8059.0usft (TBD)
<b>Site:</b>	ELU A18 495 Pad	<b>North Reference:</b>	True
<b>Well:</b>	ELU A18 FED 15D-18-495	<b>Survey Calculation Method:</b>	Minimum Curvature
<b>Wellbore:</b>	OH		
<b>Design:</b>	Design #1		

Planned Survey										
Measured Depth (usft)	Inclination (°)	Azimuth (°)	Vertical Depth (usft)	+N/-S (usft)	+E/-W (usft)	Vertical Section (usft)	Dogleg Rate (°/100usft)	Build Rate (°/100usft)	Turn Rate (°/100usft)	
9,300.0	3.89	89.81	8,856.5	24.4	2,726.4	2,726.0	3.00	-3.00	0.00	
9,400.0	0.89	89.81	8,956.4	24.4	2,730.6	2,730.2	3.00	-3.00	0.00	
<b>EOD @ Vertical / Build 1.5° / 100' - Ohio Creek</b>										
9,429.6	0.00	0.00	8,986.0	24.4	2,730.8	2,730.4	3.00	-3.00	0.00	
9,500.0	1.06	240.00	9,056.4	24.0	2,730.2	2,729.9	1.50	1.50	0.00	
<b>EOB @ 1.27° Inc. / 240.00° Azm</b>										
9,514.4	1.27	240.00	9,070.7	23.9	2,730.0	2,729.6	1.50	1.50	0.00	
9,600.0	1.27	240.00	9,156.3	22.9	2,728.3	2,728.0	0.00	0.00	0.00	
9,700.0	1.27	240.00	9,256.3	21.8	2,726.4	2,726.1	0.00	0.00	0.00	
9,800.0	1.27	240.00	9,356.3	20.7	2,724.5	2,724.2	0.00	0.00	0.00	
9,900.0	1.27	240.00	9,456.3	19.6	2,722.6	2,722.3	0.00	0.00	0.00	
10,000.0	1.27	240.00	9,556.2	18.5	2,720.7	2,720.3	0.00	0.00	0.00	
<b>Williams Fork</b>										
10,079.8	1.27	240.00	9,636.0	17.6	2,719.1	2,718.8	0.00	0.00	0.00	
10,100.0	1.27	240.00	9,656.2	17.4	2,718.7	2,718.4	0.00	0.00	0.00	
10,200.0	1.27	240.00	9,756.2	16.3	2,716.8	2,716.5	0.00	0.00	0.00	
10,300.0	1.27	240.00	9,856.2	15.2	2,714.9	2,714.6	0.00	0.00	0.00	
10,400.0	1.27	240.00	9,956.1	14.1	2,713.0	2,712.7	0.00	0.00	0.00	
10,500.0	1.27	240.00	10,056.1	13.0	2,711.0	2,710.8	0.00	0.00	0.00	
10,600.0	1.27	240.00	10,156.1	11.9	2,709.1	2,708.9	0.00	0.00	0.00	
10,700.0	1.27	240.00	10,256.1	10.8	2,707.2	2,707.0	0.00	0.00	0.00	
10,800.0	1.27	240.00	10,356.0	9.6	2,705.3	2,705.1	0.00	0.00	0.00	
10,900.0	1.27	240.00	10,456.0	8.5	2,703.4	2,703.2	0.00	0.00	0.00	
11,000.0	1.27	240.00	10,556.0	7.4	2,701.4	2,701.2	0.00	0.00	0.00	
11,100.0	1.27	240.00	10,656.0	6.3	2,699.5	2,699.3	0.00	0.00	0.00	
11,200.0	1.27	240.00	10,755.9	5.2	2,697.6	2,697.4	0.00	0.00	0.00	
11,300.0	1.27	240.00	10,855.9	4.1	2,695.7	2,695.5	0.00	0.00	0.00	
11,400.0	1.27	240.00	10,955.9	3.0	2,693.8	2,693.6	0.00	0.00	0.00	
11,500.0	1.27	240.00	11,055.9	1.9	2,691.8	2,691.7	0.00	0.00	0.00	
11,600.0	1.27	240.00	11,155.8	0.8	2,689.9	2,689.8	0.00	0.00	0.00	
11,700.0	1.27	240.00	11,255.8	-0.3	2,688.0	2,687.9	0.00	0.00	0.00	
11,800.0	1.27	240.00	11,355.8	-1.4	2,686.1	2,686.0	0.00	0.00	0.00	
11,900.0	1.27	240.00	11,455.8	-2.6	2,684.2	2,684.1	0.00	0.00	0.00	
12,000.0	1.27	240.00	11,555.7	-3.7	2,682.2	2,682.1	0.00	0.00	0.00	
12,100.0	1.27	240.00	11,655.7	-4.8	2,680.3	2,680.2	0.00	0.00	0.00	
12,200.0	1.27	240.00	11,755.7	-5.9	2,678.4	2,678.3	0.00	0.00	0.00	
12,300.0	1.27	240.00	11,855.7	-7.0	2,676.5	2,676.4	0.00	0.00	0.00	
12,400.0	1.27	240.00	11,955.7	-8.1	2,674.6	2,674.5	0.00	0.00	0.00	
12,500.0	1.27	240.00	12,055.6	-9.2	2,672.6	2,672.6	0.00	0.00	0.00	
12,600.0	1.27	240.00	12,155.6	-10.3	2,670.7	2,670.7	0.00	0.00	0.00	
12,700.0	1.27	240.00	12,255.6	-11.4	2,668.8	2,668.8	0.00	0.00	0.00	
12,800.0	1.27	240.00	12,355.6	-12.5	2,666.9	2,666.9	0.00	0.00	0.00	
12,900.0	1.27	240.00	12,455.5	-13.6	2,665.0	2,665.0	0.00	0.00	0.00	
<b>Cameo</b>										
12,980.5	1.27	240.00	12,536.0	-14.5	2,663.4	2,663.4	0.00	0.00	0.00	
13,000.0	1.27	240.00	12,555.5	-14.8	2,663.0	2,663.0	0.00	0.00	0.00	
13,100.0	1.27	240.00	12,655.5	-15.9	2,661.1	2,661.1	0.00	0.00	0.00	
13,200.0	1.27	240.00	12,755.5	-17.0	2,659.2	2,659.2	0.00	0.00	0.00	
13,300.0	1.27	240.00	12,855.4	-18.1	2,657.3	2,657.3	0.00	0.00	0.00	
13,400.0	1.27	240.00	12,955.4	-19.2	2,655.3	2,655.4	0.00	0.00	0.00	
<b>Rollins</b>										
13,480.6	1.27	240.00	13,036.0	-20.1	2,653.8	2,653.9	0.00	0.00	0.00	
13,500.0	1.27	240.00	13,055.4	-20.3	2,653.4	2,653.5	0.00	0.00	0.00	
13,600.0	1.27	240.00	13,155.4	-21.4	2,651.5	2,651.6	0.00	0.00	0.00	

<b>Database:</b>	KLXDirectional-AD	<b>Local Co-ordinate Reference:</b>	Well ELU A18 FED 15D-18-495 - Slot 15D-18
<b>Company:</b>	Caerus Oil & Gas	<b>TVD Reference:</b>	RKB=30' @ 8059.0usft (TBD)
<b>Project:</b>	Rio Blanco County, CO	<b>MD Reference:</b>	RKB=30' @ 8059.0usft (TBD)
<b>Site:</b>	ELU A18 495 Pad	<b>North Reference:</b>	True
<b>Well:</b>	ELU A18 FED 15D-18-495	<b>Survey Calculation Method:</b>	Minimum Curvature
<b>Wellbore:</b>	OH		
<b>Design:</b>	Design #1		

Planned Survey									
Measured Depth (usft)	Inclination (°)	Azimuth (°)	Vertical Depth (usft)	+N/-S (usft)	+E/-W (usft)	Vertical Section (usft)	Dogleg Rate (°/100usft)	Build Rate (°/100usft)	Turn Rate (°/100usft)
13,700.0	1.27	240.00	13,255.3	-22.5	2,649.6	2,649.7	0.00	0.00	0.00
13,800.0	1.27	240.00	13,355.3	-23.6	2,647.7	2,647.8	0.00	0.00	0.00
13,900.0	1.27	240.00	13,455.3	-24.7	2,645.7	2,645.9	0.00	0.00	0.00
TD @ 13980.7' MD / 13536.0' TVD									
13,980.7	1.27	240.00	13,536.0	-25.6	2,644.2	2,644.3	0.00	0.00	0.00

Design Targets									
Target Name - hit/miss target - Shape	Dip Angle (°)	Dip Dir. (°)	TVD (usft)	+N/-S (usft)	+E/-W (usft)	Northing (usft)	Easting (usft)	Latitude	Longitude
15D-18 - OHCR - plan hits target center - Point	0.00	0.00	8,986.0	24.4	2,730.8	14,433,375.87	2,457,651.25	39.709128	-108.094435
15D-18 - PBHL - plan hits target center - Ellipse (radii L100.0 W50.0 on 240.00 azi)	0.00	0.00	13,536.0	-25.6	2,644.2	14,433,323.10	2,457,566.30	39.708991	-108.094743

Formations						
Measured Depth (usft)	Vertical Depth (usft)	Name	Lithology	Dip (°)	Dip Direction (°)	
4,164.7	3,983.0	Wasatch				
6,860.4	6,533.0	Wasatch G				
7,293.9	6,943.0	Fort Union				
9,429.6	8,986.0	Ohio Creek				
10,079.8	9,636.0	Williams Fork				
12,980.5	12,536.0	Cameo				
13,480.6	13,036.0	Rollins				

Plan Annotations				
Measured Depth (usft)	Vertical Depth (usft)	+N/-S (usft)	+E/-W (usft)	Comment
370.0	370.0	0.0	0.0	Build 3° / 100'
636.7	635.8	6.4	17.5	E : Build 3° / 100'OB @ 8.00° Inc. / 70.00° Azm
1,026.9	1,014.9	15.9	106.6	EOB @ 18.93° Inc. / 89.81° Azm
8,798.7	8,366.5	24.0	2,627.5	Drop 3° /100'
9,429.6	8,986.0	24.4	2,730.8	EOD @ Vertical / Build 1.5° / 100'
9,514.4	9,070.7	23.9	2,730.0	EOB @ 1.27° Inc. / 240.00° Azm
13,980.7	13,536.0	-25.6	2,644.2	TD @ 13980.7' MD / 13536.0' TVD