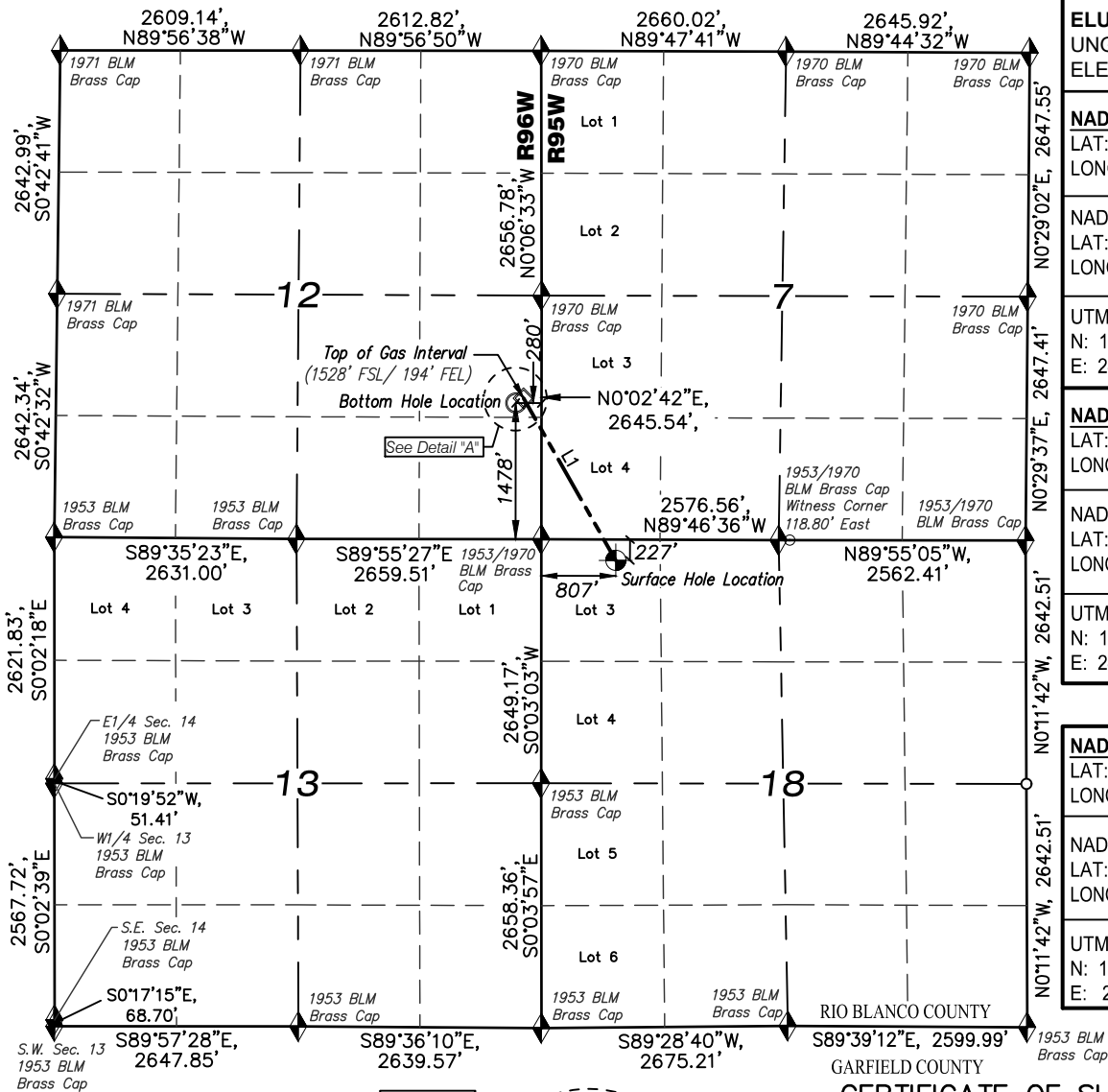


T4S, R96W, 6TH P.M.

T4S, R95W, 6TH P.M.



**ELU A18 FED 24C-12 496 WELL**  
UNGRADED GROUND  
ELEVATION = 8036.0'

**NAD 83 (SURFACE LOCATION)**

LAT: 39° 42' 32.56" N (39.709045 N)  
LONG: 108° 06' 17.29" W (108.104802 W)

**NAD27 (SURFACE LOCATION)**

LAT: 39° 42' 32.65" N (39.709070 N)  
LONG: 108° 06' 15.00" W (108.104168 W)

**UTM NAD 27 (ZONE 12) US Feet**

N: 14433266.09  
E: 2454914.10

**NAD 83 (BOTTOM HOLE LOCATION)**

LAT: 39° 42' 49.44" N (39.713733 N)  
LONG: 108° 06' 31.19" W (108.108665 W)

**NAD27 (BOTTOM HOLE LOCATION)**

LAT: 39° 42' 49.53" N (39.713758 N)  
LONG: 108° 06' 28.91" W (108.108030 W)

**UTM NAD 27 (ZONE 12) US Feet**

N: 14434938.40  
E: 2453772.40

**NAD 83 (TOP OF GAS INTERVAL)**

LAT: 39° 42' 49.93" N (39.713871 N)  
LONG: 108° 06' 30.09" W (108.108357 W)

**NAD27 (TOP OF GAS INTERVAL)**

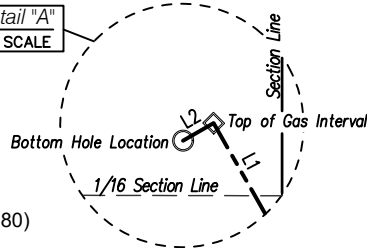
LAT: 39° 42' 50.02" N (39.713895 N)  
LONG: 108° 06' 27.80" W (108.107723 W)

**UTM NAD 27 (ZONE 12) US Feet**

N: 14434991.17  
E: 2453857.34

LINE TABLE		
LINE	DIRECTION	LENGTH
L1	N29°36'58"W	2023.08'
L2	S60°01'12"W	100.00'

Detail "A"  
NO SCALE

**NOTES:**

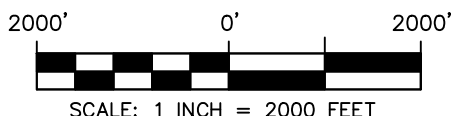
- Survey Datum:  
Low Distortion Projection Parameters  
Datum NAD83(2011) Epoch 2010.000 (GRS80)  
Projection Type = Transverse Mercator  
Origin Latitude = 39°40'00" North  
Origin Longitude = 108°04'00" West  
Scale Reduction = 1.000 377 882 Unitless  
Units = U.S. Survey Foot (USSF)  
GEOID12a NAVD88 (Basis of Elevation)
- Well footages are measured at right angles to section lines.
- PDOP Reading: 1.4 Operator: B. Taggart (Rule No. 215)
- Improvements: See Location Drawing (Figure #6) for all visible improvements within 2000 ft. of the working pad surface.

**LEGEND**

- ◆ SECTION CORNER LOCATED
- ⊕ SURFACE HOLE LOCATION
- BOTTOM HOLE LOCATION
- ◇ TOP OF GAS INTERVAL
- COMPUTED



Ted T. Taggart, Registered Land Surveyor  
Registration No., 37075 State of Colorado



**WASATCH SURVEYING ASSOCIATES**  
906 MAIN STREET, EVANSTON, WY 82930  
(307) 789-4545

**CAERUS OIL & GAS LLC**

ELU A18 FED 24C-12 496 WELL  
LOT 3 (NW1/4 NW1/4),  
SECTION 18, T4S, R95W, 6TH P.M.  
RIO BLANCO COUNTY, COLORADO

**WELL LOCATION PLAT**

SURVEYED BY: JT/BT	DATE: 5/06/22	
DRAWN BY: SGT	DATE: 6/13/24	PROJECT NO: 20-13-04