

Project: Rio Blanco County, CO
Site: ELU A18 495 Pad
Well: ELU A18 FED 15A-7-495
Wellbore: OH
Design: Design #5
Latitude: 39.709095
Longitude: -108.104258
Ground Level: 8029.0
RKB=30' @ 8059.0usft (TBD)

PROJECT DETAILS: Rio Blanco County, CO
Geodetic System: Universal Transverse Mercator (US Survey Feet)
Datum: NAD 1927 - Western US
Ellipsoid: Clarke 1866
Zone: Zone 12N (114 W to 108 W)
System Datum: Mean Sea Level

REFERENCE INFORMATION
Vertical (TVD) Reference: RKB=30' @ 8059.0usft (TBD)
Section (VS) Reference: Slot - 15A-7(0.0N, 0.0E)
Measured Depth Reference: RKB=30' @ 8059.0usft (TBD)
Calculation Method: Minimum Curvature

SECTION DETAILS

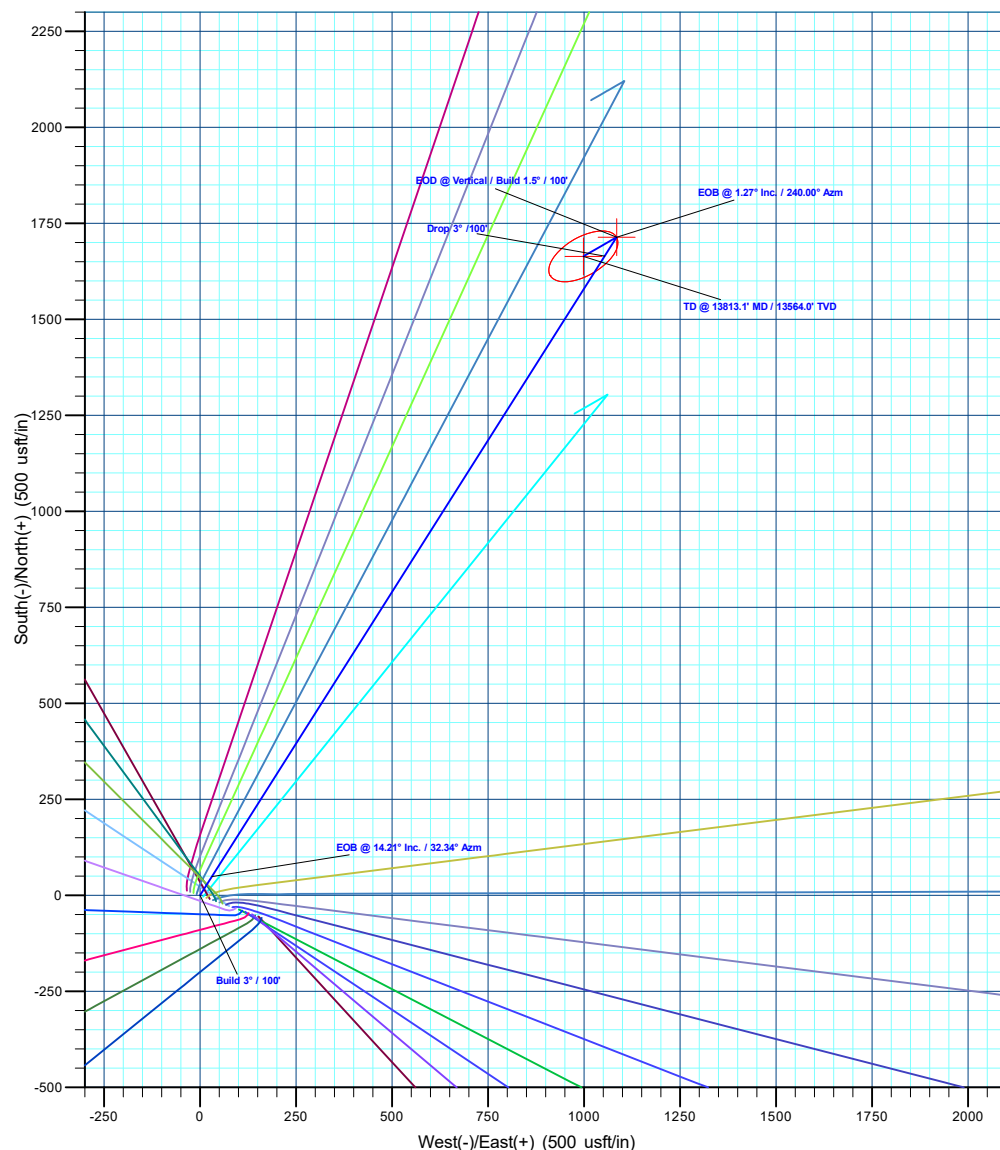
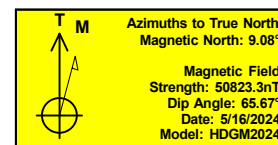
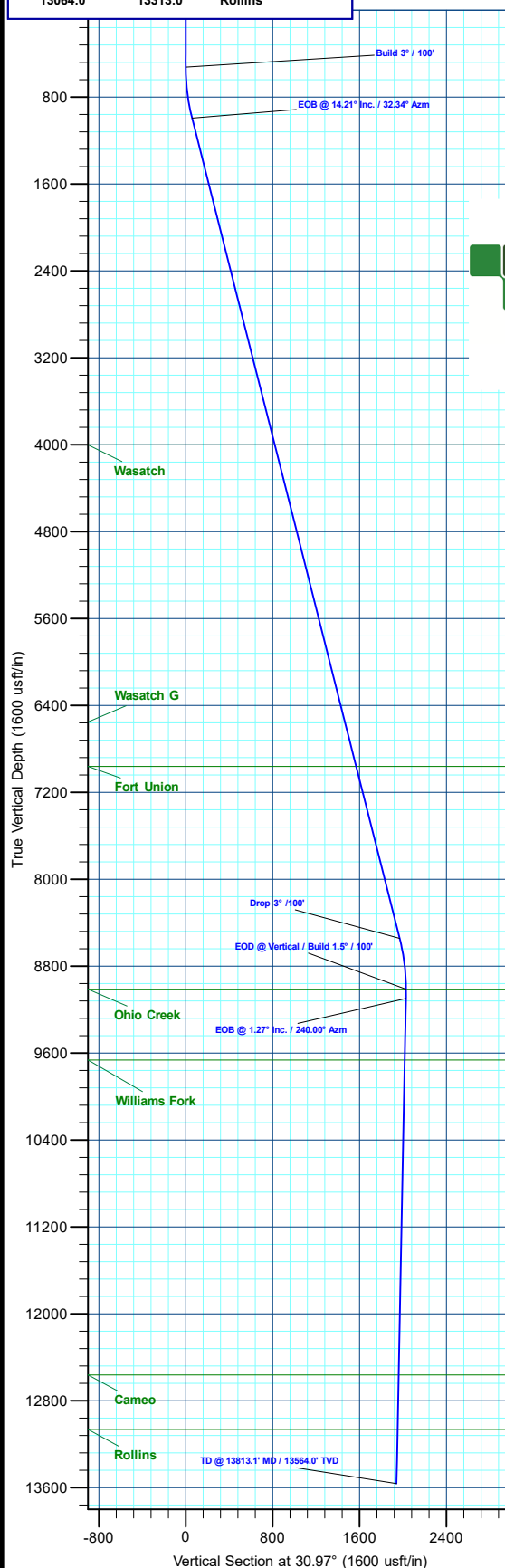
MD	Inc	Azi	TVD	+N/-S	+E/-W	Dleg	TFace	Vsect	Annotation
0.0	0.00	0.00	0.0	0.0	0.0	0.00	0.00	0.0	
525.0	0.00	0.00	525.0	0.0	0.0	0.00	0.00	0.0	Build 3° / 100'
998.6	14.21	32.34	993.8	49.4	31.3	3.00	32.34	58.4	EOB @ 14.21° Inc. / 32.34° Azm
8788.4	14.21	32.34	8545.2	1664.9	1054.0	0.00	0.00	1969.9	Drop 3° / 100'
9262.0	0.00	0.00	9014.0	1714.2	1085.3	3.00	180.00	2028.3	EOD @ Vertical / Build 1.5° / 100'
6962.0	7155.2								
9014.0	9262.0								
9346.7	1.27	240.00	9098.7	1713.8	1084.4	1.50	240.00	2027.5	EOB @ 1.27° Inc. / 240.00° Azm
13813.1	1.27	240.00	13564.0	1664.2	998.7	0.00	0.00	1940.9	TD @ 13813.1' MD / 13564.0' TVD

DESIGN TARGET DETAILS

Name	TVD	+N/-S	+E/-W	Northing	Easting	Latitude	Longitude
15A-7 - OHCR	9014.0	1714.2	1085.3	14435022.87	2455917.74	39.713800	-108.100402
15A-7 - PBHL	13564.0	1664.2	998.7	14434970.10	2455832.80	39.713662	-108.100709

WELL DETAILS: ELU A18 FED 15A-7-495

Ground Level : 8029.0							
+N/-S	+E/-W	Northing	Easting	Latitude	Longitude		
0.0	0.0	14433274.46	2454888.43	39.709095	-108.104258	15A-7	



Plan: Design #5 (ELU A18 FED 15A-7-495/OH)

Created By: Will Jircik

Date: 21:54, June 09 2024



Caerus Oil & Gas

Rio Blanco County, CO

ELU A18 495 Pad

ELU A18 FED 15A-7-495 - Slot 15A-7

OH

Plan: Design #5

KLX Well Planning Report

09 June, 2024



Database:	KLXDirectional-AD	Local Co-ordinate Reference:	Well ELU A18 FED 15A-7-495 - Slot 15A-7
Company:	Caerus Oil & Gas	TVD Reference:	RKB=30' @ 8059.0usft (TBD)
Project:	Rio Blanco County, CO	MD Reference:	RKB=30' @ 8059.0usft (TBD)
Site:	ELU A18 495 Pad	North Reference:	True
Well:	ELU A18 FED 15A-7-495	Survey Calculation Method:	Minimum Curvature
Wellbore:	OH		
Design:	Design #5		

Project	Rio Blanco County, CO		
Map System:	Universal Transverse Mercator (US Survey Feet)	System Datum:	Mean Sea Level
Geo Datum:	NAD 1927 - Western US		
Map Zone:	Zone 12N (114 W to 108 W)		

Site		ELU A18 495 Pad				
Site Position:		Northing:	14,433,285.62 usft	Latitude:	39.709129	
From:	Map	Easting:	2,454,854.21 usft	Longitude:	-108.104378	
Position Uncertainty:		0.0 usft	Slot Radius:	13-3/16 "	Grid Convergence:	1.85 °

Well		ELU A18 FED 15A-7-495 - Slot 15A-7				
Well Position	+N/-S	-12.3 usft	Northing:	14,433,274.46 usft	Latitude:	39.709095
	+E/-W	33.8 usft	Easting:	2,454,888.43 usft	Longitude:	-108.104258
Position Uncertainty		0.0 usft	Wellhead Elevation:		Ground Level:	8,029.0 usft

Wellbore	OH				
Magnetics	Model Name	Sample Date	Declination (°)	Dip Angle (°)	Field Strength (nT)
	HDGM2024	5/16/2024	9.08	65.67	50,823.30000000

Design	Design #5			
Audit Notes:				
Version:	Phase:	PLAN	Tie On Depth:	0.0
Vertical Section:	Depth From (TVD) (usft)	+N/-S (usft)	+E/-W (usft)	Direction (°)
	0.0	0.0	0.0	30.97

Plan Sections										
Measured Depth (usft)	Inclination (°)	Azimuth (°)	Vertical Depth (usft)	+N/-S (usft)	+E/-W (usft)	Dogleg Rate (°/100usft)	Build Rate (°/100usft)	Turn Rate (°/100usft)	TFO (°)	Target
0.0	0.00	0.00	0.0	0.0	0.0	0.00	0.00	0.00	0.00	
525.0	0.00	0.00	525.0	0.0	0.0	0.00	0.00	0.00	0.00	
998.6	14.21	32.34	993.8	49.4	31.3	3.00	3.00	0.00	32.34	
8,788.4	14.21	32.34	8,545.2	1,664.9	1,054.0	0.00	0.00	0.00	0.00	
9,262.0	0.00	0.00	9,014.0	1,714.2	1,085.3	3.00	-3.00	0.00	180.00	15A-7 - OHCR
9,346.7	1.27	240.00	9,098.7	1,713.8	1,084.4	1.50	1.50	-141.63	240.00	
13,813.1	1.27	240.00	13,564.0	1,664.2	998.7	0.00	0.00	0.00	0.00	15A-7 - PBHL

Database:	KLXDirectional-AD	Local Co-ordinate Reference:	Well ELU A18 FED 15A-7-495 - Slot 15A-7
Company:	Caerus Oil & Gas	TVD Reference:	RKB=30' @ 8059.0usft (TBD)
Project:	Rio Blanco County, CO	MD Reference:	RKB=30' @ 8059.0usft (TBD)
Site:	ELU A18 495 Pad	North Reference:	True
Well:	ELU A18 FED 15A-7-495	Survey Calculation Method:	Minimum Curvature
Wellbore:	OH		
Design:	Design #5		

Planned Survey									
Measured Depth (usft)	Inclination (°)	Azimuth (°)	Vertical Depth (usft)	+N/-S (usft)	+E/-W (usft)	Vertical Section (usft)	Dogleg Rate (°/100usft)	Build Rate (°/100usft)	Turn Rate (°/100usft)
0.0	0.00	0.00	0.0	0.0	0.0	0.0	0.00	0.00	0.00
100.0	0.00	0.00	100.0	0.0	0.0	0.0	0.00	0.00	0.00
200.0	0.00	0.00	200.0	0.0	0.0	0.0	0.00	0.00	0.00
300.0	0.00	0.00	300.0	0.0	0.0	0.0	0.00	0.00	0.00
400.0	0.00	0.00	400.0	0.0	0.0	0.0	0.00	0.00	0.00
500.0	0.00	0.00	500.0	0.0	0.0	0.0	0.00	0.00	0.00
Build 3° / 100'									
525.0	0.00	0.00	525.0	0.0	0.0	0.0	0.00	0.00	0.00
600.0	2.25	32.34	600.0	1.2	0.8	1.5	3.00	3.00	0.00
700.0	5.25	32.34	699.8	6.8	4.3	8.0	3.00	3.00	0.00
800.0	8.25	32.34	799.1	16.7	10.6	19.8	3.00	3.00	0.00
900.0	11.25	32.34	897.6	31.0	19.6	36.7	3.00	3.00	0.00
EOB @ 14.21° Inc. / 32.34° Azm									
998.6	14.21	32.34	993.8	49.4	31.3	58.4	3.00	3.00	0.00
1,000.0	14.21	32.34	995.1	49.7	31.4	58.7	0.00	0.00	0.00
1,100.0	14.21	32.34	1,092.1	70.4	44.6	83.3	0.00	0.00	0.00
1,200.0	14.21	32.34	1,189.0	91.1	57.7	107.8	0.00	0.00	0.00
1,300.0	14.21	32.34	1,285.9	111.9	70.8	132.4	0.00	0.00	0.00
1,400.0	14.21	32.34	1,382.9	132.6	84.0	156.9	0.00	0.00	0.00
1,500.0	14.21	32.34	1,479.8	153.3	97.1	181.4	0.00	0.00	0.00
1,600.0	14.21	32.34	1,576.8	174.1	110.2	206.0	0.00	0.00	0.00
1,700.0	14.21	32.34	1,673.7	194.8	123.3	230.5	0.00	0.00	0.00
1,800.0	14.21	32.34	1,770.6	215.6	136.5	255.1	0.00	0.00	0.00
1,900.0	14.21	32.34	1,867.6	236.3	149.6	279.6	0.00	0.00	0.00
2,000.0	14.21	32.34	1,964.5	257.0	162.7	304.1	0.00	0.00	0.00
2,100.0	14.21	32.34	2,061.5	277.8	175.9	328.7	0.00	0.00	0.00
2,200.0	14.21	32.34	2,158.4	298.5	189.0	353.2	0.00	0.00	0.00
2,300.0	14.21	32.34	2,255.3	319.3	202.1	377.7	0.00	0.00	0.00
2,400.0	14.21	32.34	2,352.3	340.0	215.2	402.3	0.00	0.00	0.00
2,500.0	14.21	32.34	2,449.2	360.7	228.4	426.8	0.00	0.00	0.00
2,600.0	14.21	32.34	2,546.2	381.5	241.5	451.4	0.00	0.00	0.00
2,700.0	14.21	32.34	2,643.1	402.2	254.6	475.9	0.00	0.00	0.00
2,800.0	14.21	32.34	2,740.1	423.0	267.8	500.4	0.00	0.00	0.00
2,900.0	14.21	32.34	2,837.0	443.7	280.9	525.0	0.00	0.00	0.00
3,000.0	14.21	32.34	2,933.9	464.4	294.0	549.5	0.00	0.00	0.00
3,100.0	14.21	32.34	3,030.9	485.2	307.2	574.1	0.00	0.00	0.00
3,200.0	14.21	32.34	3,127.8	505.9	320.3	598.6	0.00	0.00	0.00
3,300.0	14.21	32.34	3,224.8	526.6	333.4	623.1	0.00	0.00	0.00
3,400.0	14.21	32.34	3,321.7	547.4	346.5	647.7	0.00	0.00	0.00
3,500.0	14.21	32.34	3,418.6	568.1	359.7	672.2	0.00	0.00	0.00
3,600.0	14.21	32.34	3,515.6	588.9	372.8	696.8	0.00	0.00	0.00
3,700.0	14.21	32.34	3,612.5	609.6	385.9	721.3	0.00	0.00	0.00
3,800.0	14.21	32.34	3,709.5	630.3	399.1	745.8	0.00	0.00	0.00
3,900.0	14.21	32.34	3,806.4	651.1	412.2	770.4	0.00	0.00	0.00
4,000.0	14.21	32.34	3,903.3	671.8	425.3	794.9	0.00	0.00	0.00
4,100.0	14.21	32.34	4,000.3	692.6	438.4	819.4	0.00	0.00	0.00
Wasatch									
4,101.8	14.21	32.34	4,002.0	692.9	438.7	819.9	0.00	0.00	0.00
4,200.0	14.21	32.34	4,097.2	713.3	451.6	844.0	0.00	0.00	0.00
4,300.0	14.21	32.34	4,194.2	734.0	464.7	868.5	0.00	0.00	0.00
4,400.0	14.21	32.34	4,291.1	754.8	477.8	893.1	0.00	0.00	0.00
4,500.0	14.21	32.34	4,388.0	775.5	491.0	917.6	0.00	0.00	0.00
4,600.0	14.21	32.34	4,485.0	796.3	504.1	942.1	0.00	0.00	0.00

Database:	KLXDirectional-AD	Local Co-ordinate Reference:	Well ELU A18 FED 15A-7-495 - Slot 15A-7
Company:	Caerus Oil & Gas	TVD Reference:	RKB=30' @ 8059.0usft (TBD)
Project:	Rio Blanco County, CO	MD Reference:	RKB=30' @ 8059.0usft (TBD)
Site:	ELU A18 495 Pad	North Reference:	True
Well:	ELU A18 FED 15A-7-495	Survey Calculation Method:	Minimum Curvature
Wellbore:	OH		
Design:	Design #5		

Planned Survey									
Measured Depth (usft)	Inclination (°)	Azimuth (°)	Vertical Depth (usft)	+N/-S (usft)	+E/-W (usft)	Vertical Section (usft)	Dogleg Rate (°/100usft)	Build Rate (°/100usft)	Turn Rate (°/100usft)
4,700.0	14.21	32.34	4,581.9	817.0	517.2	966.7	0.00	0.00	0.00
4,800.0	14.21	32.34	4,678.9	837.7	530.4	991.2	0.00	0.00	0.00
4,900.0	14.21	32.34	4,775.8	858.5	543.5	1,015.8	0.00	0.00	0.00
5,000.0	14.21	32.34	4,872.7	879.2	556.6	1,040.3	0.00	0.00	0.00
5,100.0	14.21	32.34	4,969.7	900.0	569.7	1,064.8	0.00	0.00	0.00
5,200.0	14.21	32.34	5,066.6	920.7	582.9	1,089.4	0.00	0.00	0.00
5,300.0	14.21	32.34	5,163.6	941.4	596.0	1,113.9	0.00	0.00	0.00
5,400.0	14.21	32.34	5,260.5	962.2	609.1	1,138.4	0.00	0.00	0.00
5,500.0	14.21	32.34	5,357.5	982.9	622.3	1,163.0	0.00	0.00	0.00
5,600.0	14.21	32.34	5,454.4	1,003.6	635.4	1,187.5	0.00	0.00	0.00
5,700.0	14.21	32.34	5,551.3	1,024.4	648.5	1,212.1	0.00	0.00	0.00
5,800.0	14.21	32.34	5,648.3	1,045.1	661.6	1,236.6	0.00	0.00	0.00
5,900.0	14.21	32.34	5,745.2	1,065.9	674.8	1,261.1	0.00	0.00	0.00
6,000.0	14.21	32.34	5,842.2	1,086.6	687.9	1,285.7	0.00	0.00	0.00
6,100.0	14.21	32.34	5,939.1	1,107.3	701.0	1,310.2	0.00	0.00	0.00
6,200.0	14.21	32.34	6,036.0	1,128.1	714.2	1,334.8	0.00	0.00	0.00
6,300.0	14.21	32.34	6,133.0	1,148.8	727.3	1,359.3	0.00	0.00	0.00
6,400.0	14.21	32.34	6,229.9	1,169.6	740.4	1,383.8	0.00	0.00	0.00
6,500.0	14.21	32.34	6,326.9	1,190.3	753.6	1,408.4	0.00	0.00	0.00
6,600.0	14.21	32.34	6,423.8	1,211.0	766.7	1,432.9	0.00	0.00	0.00
6,700.0	14.21	32.34	6,520.7	1,231.8	779.8	1,457.5	0.00	0.00	0.00
Wasatch G									
6,732.2	14.21	32.34	6,552.0	1,238.5	784.0	1,465.4	0.00	0.00	0.00
6,800.0	14.21	32.34	6,617.7	1,252.5	792.9	1,482.0	0.00	0.00	0.00
6,900.0	14.21	32.34	6,714.6	1,273.3	806.1	1,506.5	0.00	0.00	0.00
7,000.0	14.21	32.34	6,811.6	1,294.0	819.2	1,531.1	0.00	0.00	0.00
7,100.0	14.21	32.34	6,908.5	1,314.7	832.3	1,555.6	0.00	0.00	0.00
Fort Union									
7,155.2	14.21	32.34	6,962.0	1,326.2	839.6	1,569.1	0.00	0.00	0.00
7,200.0	14.21	32.34	7,005.4	1,335.5	845.5	1,580.1	0.00	0.00	0.00
7,300.0	14.21	32.34	7,102.4	1,356.2	858.6	1,604.7	0.00	0.00	0.00
7,400.0	14.21	32.34	7,199.3	1,376.9	871.7	1,629.2	0.00	0.00	0.00
7,500.0	14.21	32.34	7,296.3	1,397.7	884.8	1,653.8	0.00	0.00	0.00
7,600.0	14.21	32.34	7,393.2	1,418.4	898.0	1,678.3	0.00	0.00	0.00
7,700.0	14.21	32.34	7,490.1	1,439.2	911.1	1,702.8	0.00	0.00	0.00
7,800.0	14.21	32.34	7,587.1	1,459.9	924.2	1,727.4	0.00	0.00	0.00
7,900.0	14.21	32.34	7,684.0	1,480.6	937.4	1,751.9	0.00	0.00	0.00
8,000.0	14.21	32.34	7,781.0	1,501.4	950.5	1,776.5	0.00	0.00	0.00
8,100.0	14.21	32.34	7,877.9	1,522.1	963.6	1,801.0	0.00	0.00	0.00
8,200.0	14.21	32.34	7,974.9	1,542.9	976.8	1,825.5	0.00	0.00	0.00
8,300.0	14.21	32.34	8,071.8	1,563.6	989.9	1,850.1	0.00	0.00	0.00
8,400.0	14.21	32.34	8,168.7	1,584.3	1,003.0	1,874.6	0.00	0.00	0.00
8,500.0	14.21	32.34	8,265.7	1,605.1	1,016.1	1,899.1	0.00	0.00	0.00
8,600.0	14.21	32.34	8,362.6	1,625.8	1,029.3	1,923.7	0.00	0.00	0.00
8,700.0	14.21	32.34	8,459.6	1,646.6	1,042.4	1,948.2	0.00	0.00	0.00
Drop 3° /100'									
8,788.4	14.21	32.34	8,545.2	1,664.9	1,054.0	1,969.9	0.00	0.00	0.00
8,800.0	13.86	32.34	8,556.5	1,667.3	1,055.5	1,972.7	3.00	-3.00	0.00
8,900.0	10.86	32.34	8,654.2	1,685.4	1,067.0	1,994.1	3.00	-3.00	0.00
9,000.0	7.86	32.34	8,752.8	1,699.1	1,075.7	2,010.4	3.00	-3.00	0.00
9,100.0	4.86	32.34	8,852.2	1,708.4	1,081.6	2,021.5	3.00	-3.00	0.00
9,200.0	1.86	32.34	8,952.0	1,713.4	1,084.7	2,027.3	3.00	-3.00	0.00
EOD @ Vertical / Build 1.5° / 100' - Ohio Creek									
9,262.0	0.00	0.00	9,014.0	1,714.2	1,085.3	2,028.3	3.00	-3.00	0.00

Database:	KLXDirectional-AD	Local Co-ordinate Reference:	Well ELU A18 FED 15A-7-495 - Slot 15A-7
Company:	Caerus Oil & Gas	TVD Reference:	RKB=30' @ 8059.0usft (TBD)
Project:	Rio Blanco County, CO	MD Reference:	RKB=30' @ 8059.0usft (TBD)
Site:	ELU A18 495 Pad	North Reference:	True
Well:	ELU A18 FED 15A-7-495	Survey Calculation Method:	Minimum Curvature
Wellbore:	OH		
Design:	Design #5		

Planned Survey									
Measured Depth (usft)	Inclination (°)	Azimuth (°)	Vertical Depth (usft)	+N/-S (usft)	+E/-W (usft)	Vertical Section (usft)	Dogleg Rate (°/100usft)	Build Rate (°/100usft)	Turn Rate (°/100usft)
9,300.0	0.57	240.00	9,052.0	1,714.2	1,085.1	2,028.2	1.50	1.50	0.00
EOB @ 1.27° Inc. / 240.00° Azm									
9,346.7	1.27	240.00	9,098.7	1,713.8	1,084.4	2,027.5	1.50	1.50	0.00
9,400.0	1.27	240.00	9,152.0	1,713.2	1,083.4	2,026.5	0.00	0.00	0.00
9,500.0	1.27	240.00	9,252.0	1,712.1	1,081.5	2,024.5	0.00	0.00	0.00
9,600.0	1.27	240.00	9,351.9	1,711.0	1,079.6	2,022.6	0.00	0.00	0.00
9,700.0	1.27	240.00	9,451.9	1,709.9	1,077.7	2,020.6	0.00	0.00	0.00
9,800.0	1.27	240.00	9,551.9	1,708.8	1,075.7	2,018.7	0.00	0.00	0.00
9,900.0	1.27	240.00	9,651.9	1,707.6	1,073.8	2,016.8	0.00	0.00	0.00
Williams Fork									
9,912.1	1.27	240.00	9,664.0	1,707.5	1,073.6	2,016.5	0.00	0.00	0.00
10,000.0	1.27	240.00	9,751.8	1,706.5	1,071.9	2,014.8	0.00	0.00	0.00
10,100.0	1.27	240.00	9,851.8	1,705.4	1,070.0	2,012.9	0.00	0.00	0.00
10,200.0	1.27	240.00	9,951.8	1,704.3	1,068.1	2,010.9	0.00	0.00	0.00
10,300.0	1.27	240.00	10,051.8	1,703.2	1,066.1	2,009.0	0.00	0.00	0.00
10,400.0	1.27	240.00	10,151.7	1,702.1	1,064.2	2,007.1	0.00	0.00	0.00
10,500.0	1.27	240.00	10,251.7	1,701.0	1,062.3	2,005.1	0.00	0.00	0.00
10,600.0	1.27	240.00	10,351.7	1,699.9	1,060.4	2,003.2	0.00	0.00	0.00
10,700.0	1.27	240.00	10,451.7	1,698.8	1,058.4	2,001.3	0.00	0.00	0.00
10,800.0	1.27	240.00	10,551.6	1,697.7	1,056.5	1,999.3	0.00	0.00	0.00
10,900.0	1.27	240.00	10,651.6	1,696.6	1,054.6	1,997.4	0.00	0.00	0.00
11,000.0	1.27	240.00	10,751.6	1,695.4	1,052.7	1,995.4	0.00	0.00	0.00
11,100.0	1.27	240.00	10,851.6	1,694.3	1,050.8	1,993.5	0.00	0.00	0.00
11,200.0	1.27	240.00	10,951.6	1,693.2	1,048.8	1,991.6	0.00	0.00	0.00
11,300.0	1.27	240.00	11,051.5	1,692.1	1,046.9	1,989.6	0.00	0.00	0.00
11,400.0	1.27	240.00	11,151.5	1,691.0	1,045.0	1,987.7	0.00	0.00	0.00
11,500.0	1.27	240.00	11,251.5	1,689.9	1,043.1	1,985.7	0.00	0.00	0.00
11,600.0	1.27	240.00	11,351.5	1,688.8	1,041.2	1,983.8	0.00	0.00	0.00
11,700.0	1.27	240.00	11,451.4	1,687.7	1,039.2	1,981.9	0.00	0.00	0.00
11,800.0	1.27	240.00	11,551.4	1,686.6	1,037.3	1,979.9	0.00	0.00	0.00
11,900.0	1.27	240.00	11,651.4	1,685.5	1,035.4	1,978.0	0.00	0.00	0.00
12,000.0	1.27	240.00	11,751.4	1,684.4	1,033.5	1,976.0	0.00	0.00	0.00
12,100.0	1.27	240.00	11,851.3	1,683.2	1,031.6	1,974.1	0.00	0.00	0.00
12,200.0	1.27	240.00	11,951.3	1,682.1	1,029.6	1,972.2	0.00	0.00	0.00
12,300.0	1.27	240.00	12,051.3	1,681.0	1,027.7	1,970.2	0.00	0.00	0.00
12,400.0	1.27	240.00	12,151.3	1,679.9	1,025.8	1,968.3	0.00	0.00	0.00
12,500.0	1.27	240.00	12,251.2	1,678.8	1,023.9	1,966.3	0.00	0.00	0.00
12,600.0	1.27	240.00	12,351.2	1,677.7	1,022.0	1,964.4	0.00	0.00	0.00
12,700.0	1.27	240.00	12,451.2	1,676.6	1,020.0	1,962.5	0.00	0.00	0.00
12,800.0	1.27	240.00	12,551.2	1,675.5	1,018.1	1,960.5	0.00	0.00	0.00
Cameo									
12,812.8	1.27	240.00	12,564.0	1,675.3	1,017.9	1,960.3	0.00	0.00	0.00
12,900.0	1.27	240.00	12,651.1	1,674.4	1,016.2	1,958.6	0.00	0.00	0.00
13,000.0	1.27	240.00	12,751.1	1,673.3	1,014.3	1,956.7	0.00	0.00	0.00
13,100.0	1.27	240.00	12,851.1	1,672.2	1,012.3	1,954.7	0.00	0.00	0.00
13,200.0	1.27	240.00	12,951.1	1,671.0	1,010.4	1,952.8	0.00	0.00	0.00
13,300.0	1.27	240.00	13,051.0	1,669.9	1,008.5	1,950.8	0.00	0.00	0.00
Rollins									
13,313.0	1.27	240.00	13,064.0	1,669.8	1,008.3	1,950.6	0.00	0.00	0.00
13,400.0	1.27	240.00	13,151.0	1,668.8	1,006.6	1,948.9	0.00	0.00	0.00
13,500.0	1.27	240.00	13,251.0	1,667.7	1,004.7	1,947.0	0.00	0.00	0.00
13,600.0	1.27	240.00	13,351.0	1,666.6	1,002.7	1,945.0	0.00	0.00	0.00
13,700.0	1.27	240.00	13,450.9	1,665.5	1,000.8	1,943.1	0.00	0.00	0.00

Database:	KLXDirectional-AD	Local Co-ordinate Reference:	Well ELU A18 FED 15A-7-495 - Slot 15A-7
Company:	Caerus Oil & Gas	TVD Reference:	RKB=30' @ 8059.0usft (TBD)
Project:	Rio Blanco County, CO	MD Reference:	RKB=30' @ 8059.0usft (TBD)
Site:	ELU A18 495 Pad	North Reference:	True
Well:	ELU A18 FED 15A-7-495	Survey Calculation Method:	Minimum Curvature
Wellbore:	OH		
Design:	Design #5		

Planned Survey									
Measured Depth (usft)	Inclination (°)	Azimuth (°)	Vertical Depth (usft)	+N/-S (usft)	+E/-W (usft)	Vertical Section (usft)	Dogleg Rate (°/100usft)	Build Rate (°/100usft)	Turn Rate (°/100usft)
13,800.0	1.27	240.00	13,550.9	1,664.4	998.9	1,941.1	0.00	0.00	0.00
TD @ 13813.1' MD / 13564.0' TVD									
13,813.1	1.27	240.00	13,564.0	1,664.2	998.7	1,940.9	0.00	0.00	0.00

Design Targets									
Target Name	Dip Angle (°)	Dip Dir. (°)	TVD (usft)	+N/-S (usft)	+E/-W (usft)	Northing (usft)	Easting (usft)	Latitude	Longitude
15A-7 - OHCR	0.00	0.00	9,014.0	1,714.2	1,085.3	14,435,022.87	2,455,917.75	39.713800	-108.100402
- plan hits target center									
- Point									
15A-7 - PBHL	0.00	0.00	13,564.0	1,664.2	998.7	14,434,970.10	2,455,832.80	39.713663	-108.100710
- plan hits target center									
- Ellipse (radii L100.0 W50.0 on 240.00 azi)									

Formations						
Measured Depth (usft)	Vertical Depth (usft)	Name	Lithology	Dip (°)	Dip Direction (°)	
4,101.8	4,002.0	Wasatch				
6,732.2	6,552.0	Wasatch G				
7,155.2	6,962.0	Fort Union				
9,262.0	9,014.0	Ohio Creek				
9,912.1	9,664.0	Williams Fork				
12,812.8	12,564.0	Cameo				
13,313.0	13,064.0	Rollins				

Plan Annotations				
Measured Depth (usft)	Vertical Depth (usft)	+N/-S (usft)	+E/-W (usft)	Comment
525.0	525.0	0.0	0.0	Build 3° / 100'
998.6	993.8	49.4	31.3	EOB @ 14.21° Inc. / 32.34° Azm
8,788.4	8,545.2	1,664.9	1,054.0	Drop 3° / 100'
9,262.0	9,014.0	1,714.2	1,085.3	EOD @ Vertical / Build 1.5° / 100'
9,346.7	9,098.7	1,713.8	1,084.4	EOB @ 1.27° Inc. / 240.00° Azm
13,813.1	13,564.0	1,664.2	998.7	TD @ 13813.1' MD / 13564.0' TVD