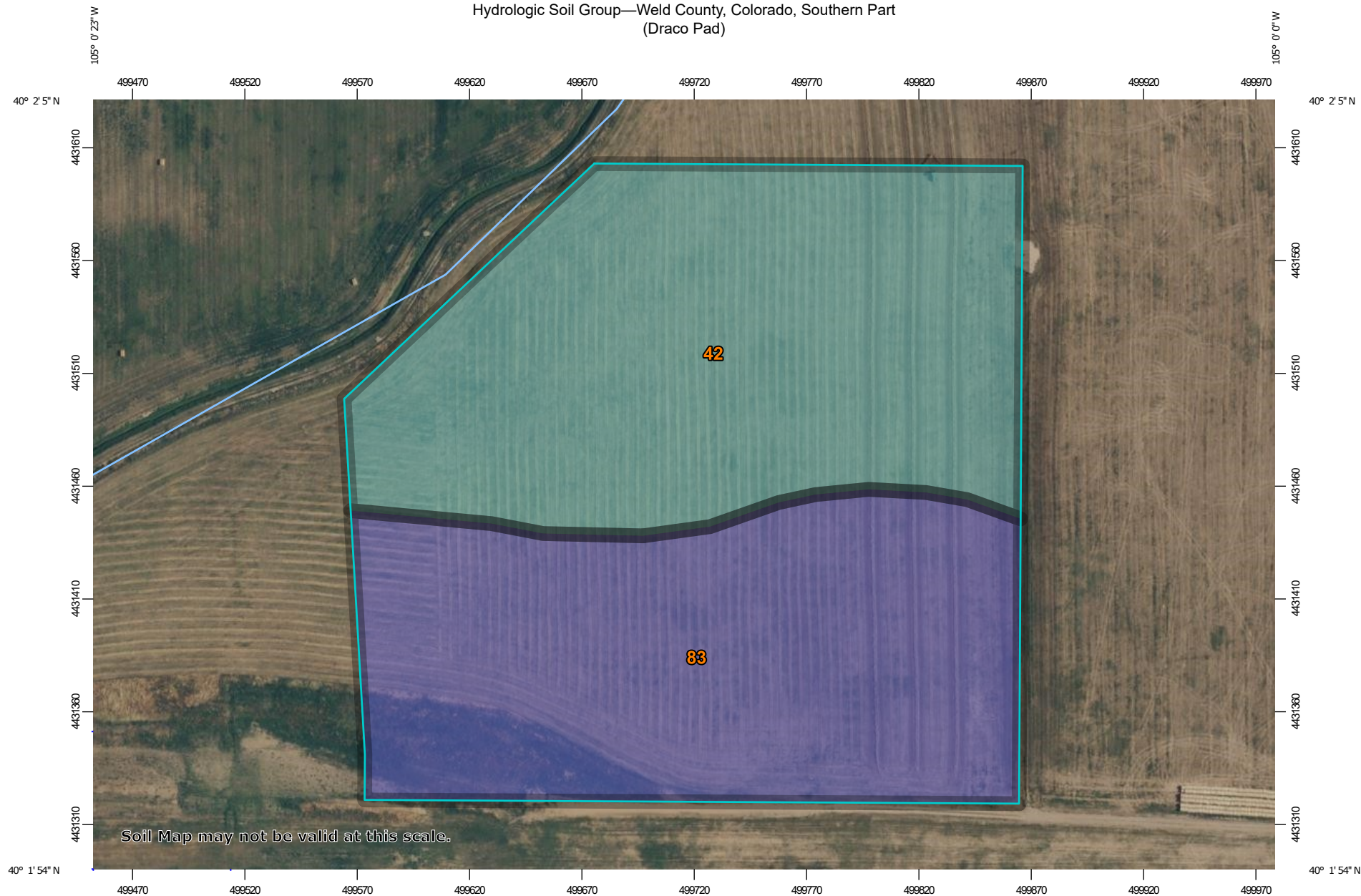
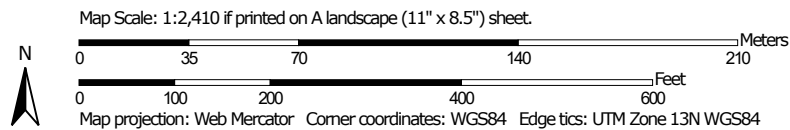


# Hydrologic Soil Group—Weld County, Colorado, Southern Part (Draco Pad)



Soil Map may not be valid at this scale.



**Natural Resources  
Conservation Service**

Web Soil Survey  
National Cooperative Soil Survey

10/10/2023  
Page 1 of 4

## Weld County, Colorado, Southern Part

### 42—Nunn clay loam, 1 to 3 percent slopes

#### Map Unit Setting

*National map unit symbol:* 2tlpl

*Elevation:* 3,900 to 5,840 feet

*Mean annual precipitation:* 13 to 17 inches

*Mean annual air temperature:* 50 to 54 degrees F

*Frost-free period:* 135 to 160 days

*Farmland classification:* Prime farmland if irrigated

#### Map Unit Composition

*Nunn and similar soils:* 85 percent

*Minor components:* 15 percent

*Estimates are based on observations, descriptions, and transects of the mapunit.*

#### Description of Nunn

##### Setting

*Landform:* Terraces

*Landform position (three-dimensional):* Tread

*Down-slope shape:* Linear

*Across-slope shape:* Linear

*Parent material:* Pleistocene aged alluvium and/or eolian deposits

##### Typical profile

*Ap - 0 to 9 inches:* clay loam

*Bt - 9 to 13 inches:* clay loam

*Btk - 13 to 25 inches:* clay loam

*Bk1 - 25 to 38 inches:* clay loam

*Bk2 - 38 to 80 inches:* clay loam

##### Properties and qualities

*Slope:* 1 to 3 percent

*Depth to restrictive feature:* More than 80 inches

*Drainage class:* Well drained

*Runoff class:* Medium

*Capacity of the most limiting layer to transmit water*

*(Ksat):* Moderately low to moderately high (0.06 to 0.20 in/hr)

*Depth to water table:* More than 80 inches

*Frequency of flooding:* None

*Frequency of ponding:* None

*Calcium carbonate, maximum content:* 7 percent

*Maximum salinity:* Nonsaline to very slightly saline (0.1 to 2.0 mmhos/cm)

*Sodium adsorption ratio, maximum:* 0.5

*Available water supply, 0 to 60 inches:* High (about 9.9 inches)

##### Interpretive groups

*Land capability classification (irrigated):* 2e

*Land capability classification (nonirrigated): 3e*  
*Hydrologic Soil Group: C*  
*Ecological site: R067BY042CO - Clayey Plains*  
*Hydric soil rating: No*

#### **Minor Components**

##### **Heldt**

*Percent of map unit: 10 percent*  
*Landform: Terraces*  
*Landform position (three-dimensional): Tread*  
*Down-slope shape: Linear*  
*Across-slope shape: Linear*  
*Ecological site: R067BY042CO - Clayey Plains*  
*Hydric soil rating: No*

##### **Satanta**

*Percent of map unit: 5 percent*  
*Landform: Terraces*  
*Landform position (three-dimensional): Tread*  
*Down-slope shape: Linear*  
*Across-slope shape: Linear*  
*Ecological site: R067BY002CO - Loamy Plains*  
*Hydric soil rating: No*

## **Data Source Information**

Soil Survey Area: Weld County, Colorado, Southern Part  
Survey Area Data: Version 21, Sep 1, 2022

## Weld County, Colorado, Southern Part

### 83—Wiley-Colby complex, 3 to 5 percent slopes

#### Map Unit Setting

*National map unit symbol:* 3644

*Elevation:* 4,850 to 5,000 feet

*Mean annual precipitation:* 12 to 16 inches

*Mean annual air temperature:* 48 to 54 degrees F

*Frost-free period:* 135 to 170 days

*Farmland classification:* Farmland of statewide importance

#### Map Unit Composition

*Wiley and similar soils:* 55 percent

*Colby and similar soils:* 30 percent

*Minor components:* 15 percent

*Estimates are based on observations, descriptions, and transects of the mapunit.*

#### Description of Wiley

##### Setting

*Landform:* Plains

*Down-slope shape:* Linear

*Across-slope shape:* Linear

*Parent material:* Calcareous eolian deposits

##### Typical profile

*H1 - 0 to 11 inches:* silt loam

*H2 - 11 to 60 inches:* silty clay loam

*H3 - 60 to 64 inches:* silty clay loam

##### Properties and qualities

*Slope:* 3 to 5 percent

*Depth to restrictive feature:* More than 80 inches

*Drainage class:* Well drained

*Runoff class:* Low

*Capacity of the most limiting layer to transmit water*

*(Ksat):* Moderately high to high (0.60 to 2.00 in/hr)

*Depth to water table:* More than 80 inches

*Frequency of flooding:* None

*Frequency of ponding:* None

*Calcium carbonate, maximum content:* 15 percent

*Maximum salinity:* Nonsaline to very slightly saline (0.0 to 2.0 mmhos/cm)

*Available water supply, 0 to 60 inches:* High (about 11.7 inches)

##### Interpretive groups

*Land capability classification (irrigated):* 3e

*Land capability classification (nonirrigated):* 4e

*Hydrologic Soil Group:* B

*Ecological site:* R067BY002CO - Loamy Plains

*Hydric soil rating:* No

## **Description of Colby**

### **Setting**

*Landform:* Plains

*Down-slope shape:* Linear

*Across-slope shape:* Linear

*Parent material:* Calcareous eolian deposits

### **Typical profile**

*H1 - 0 to 7 inches:* loam

*H2 - 7 to 60 inches:* silt loam

### **Properties and qualities**

*Slope:* 3 to 5 percent

*Depth to restrictive feature:* More than 80 inches

*Drainage class:* Well drained

*Runoff class:* Low

*Capacity of the most limiting layer to transmit water*

*(Ksat):* Moderately high to high (0.57 to 2.00 in/hr)

*Depth to water table:* More than 80 inches

*Frequency of flooding:* None

*Frequency of ponding:* None

*Calcium carbonate, maximum content:* 15 percent

*Available water supply, 0 to 60 inches:* High (about 10.6 inches)

### **Interpretive groups**

*Land capability classification (irrigated):* 3e

*Land capability classification (nonirrigated):* 4e

*Hydrologic Soil Group:* B

*Ecological site:* R067BY002CO - Loamy Plains

*Hydric soil rating:* No

## **Minor Components**

### **Heldt**

*Percent of map unit:* 9 percent

*Hydric soil rating:* No

### **Weld**

*Percent of map unit:* 6 percent

*Hydric soil rating:* No

## **Data Source Information**

Soil Survey Area: Weld County, Colorado, Southern Part

Survey Area Data: Version 22, Aug 24, 2023