

SITE SAFETY AND EMERGENCY ACTION PLAN

CIVITAS RESOURCES, INC.



EXTRACTION OIL AND GAS, LLC

District Office

650 Southgate Drive

Windsor, CO 80550

Draco Pad

Weld County, Colorado

Address TBD

Table of Contents

SECTION 1 – APPROVAL SIGNATURES	1
SECTION 2 – SITE ADDRESS AND DIRECTIONS.....	2
a) Directions:.....	2
b) Ingress and egress information:	2
c) Physical Address and GPS coordinates	2
d) Emergency Evacuation/Muster Assembly point(s)	2
SECTION 3 – LIST OF EMERGENCY CONTACTS.....	3
a) Civitas Resources	3
b) Civitas Resources Community/Media Relations.....	3
c) First Responders (Fire, EMS, HazMat)	3
d) Local, State, and Federal Contacts	3
e) Medical Facilities (<i>Nearest locations to site</i>)	4
f) Spill Response Organization (<i>Contracted</i>)	4
g) Loss of Well Control.....	4
h) Railroad Emergency Response (<i>if applicable</i>).....	4
i) Mutual-Aid –	4
SECTION – 4 SITE SPECIFIC INFORMATION.....	5
a) Site Description.....	5
b) Nearby Schools, High Occupancy Buildings, Waterways.....	5
c) Site Safety Requirements and General Safety Information	5
d) Equipment List	5
e) Chemicals stored on-site (BBLs and Gallons)	6
SECTION 5 – MAPS AND DRAWINGS	7
Project Area Map.....	7
Project Location Access Map and Muster Point.....	8
Haul Route Map.....	9
2500 Foot Buffer Area Map	10
SECTION 6 – SPILL RESPONSE AND CLEAN-UP.....	11
a) Spill Response	11
b) Spill Reporting.....	11
SECTION 7 – REPORTABLE QUANTITIES.....	13
a) Reportable Quantities	13
b. Reportable Requirements	13
SECTION 8 – EVACUATION INFORMATION.....	13
a. Evacuation Plan Procedures (public)	13
SECTION – 9 TRAINING AND EXERCISES	14
SECTION – 10 COORDINATION WITH FIRST RESPONDERS	14
SECTION – 11 Plan Review and Update Procedures.....	15

SECTION 1 – APPROVAL SIGNATURES

Instructions: Company Representative to sign with concurrence review by local Fire District in alignment with ECMC FORM 2 A and Rule 602. J Emergency Response Plan, Guidance Plan Element 2.

Civitas Resources			
Name	Signature	Title	Date
Lisa David		Director- Emergency Management	
Fire District			
Name	Signature	Title	Date

SECTION 2 – SITE ADDRESS AND DIRECTIONS

a) Directions:

From WCR 7 and WCR 6 proceed N. approximately .2 miles, then turn West on to the lease road entrance.

b) Ingress and egress information:

All traffic into and out of **Draco Pad** will check-in and check-out with security. All ingress and egress routes will be clearly identified and kept clear from parked/staged vehicles at all times.

c) Physical Address and GPS coordinates:

- **API#** – Pending ECMC Permit Approval
- **Legal Description** – SE ¼ of Section 4, Township 1 North, Range 68 West
- **Address** - * Address Pending (*Weld OEM will provide physical address for 911 dispatching*)
- **Town, CO, Zip** – Weld County, Colorado
- **Lat/Long:** Lat: 40.033221°N Long: -105.003518°W

d) Emergency Evacuation/Muster Assembly point(s):

For incidents where remaining in a particular area could pose a hazard to personnel onsite, such as a fire or hazardous material release, evacuation may be required to ensure the safety of onsite personnel. In the event of an emergency, site personnel will initially be evacuated to pre-designated muster assembly points.

- The Muster assembly points are identified on Figure 2 in this plan, and noted on the site-specific TRP.
- The Muster assembly points will be identified during all site safety briefings for visitors, employees, and contract personnel.
- **Sign-In Sheets:** During drilling and completion activities all employees and approved visitors to the **Draco Pad in the SE ¼ of Section 21, Township 1 North, Range 68 West** will be required to enter through a manned security checkpoint. Upon checking in, employees and visitors will be provided with a detailed safety briefing of current operations, all safety precautions that must be adhered to, and the site emergency evacuation plan. In addition, all personnel who enter the location must sign out upon their departure. Security or Supervisory personnel are required to account for all persons entering or leaving during active operations and in the event of an incident.
- Once drilling and completion activities are finalized, the site will transition to its production phase and no unauthorized personnel will be allowed on location without first contacting a company representative.

SECTION 3 – LIST OF EMERGENCY CONTACTS

a) Civitas Resources

Name	Office Phone	Emergency/Cell
Field Office 650 Southgate Drive Windsor, CO 80550	NA	303-659-7740
Civitas Resources EHS on-call Emergency Number	720-927-1813	NA
Emergency Management Director- Lisa David	NA	Cell 307-689-0000
Health and Safety Manager- Lisa Allen	NA	Cell 409-454-2104
EHS – Environmental Luke Kelly	NA	Cell 720-315-8934

b) Civitas Resources Community/Media Relations

Name	Office Phone	Cell Phone
Rich Coolidge	NA	303-312-8561

c) First Responders (Fire, EMS, HazMat)

Name	Emergency Number	Non-Emergency Number
*All emergency notifications require notification to 911 first		
Mountain View Fire	911	303-772-0710
Weld County Sheriff	911	970-356-4015
Colorado State Highway Patrol	911	970-506-4999

d) Local, State, and Federal Contacts

Name	Emergency Number	Non-Emergency Number
Weld County Oil and Gas Energy Department	none	970-400-3580
Weld County OEM	none	970-350-9600
ECMC	none	303-894-2100
CDPHE	none	877-518-5608
Colorado Parks & Wildlife	none	303-291-7227

National Response Center	800-424-8802	none
--------------------------	--------------	------

e) **Medical Facilities** *(Nearest locations to site)*

Name	Office Phone
Centura St. Anthony North 14300 Orchard Pkwy Westminster, CO 80023	720-627-0000
Northern Colorado Medical Facility (Burn Unit) 1801 16 th St Greeley, CO 80631	970-810-4121

f) **Spill Response Organization** *(Contracted)*

Name	24/7 Emergency Number	Non-Emergency Number
EnviroServe	800-488-0910	NA

g) **Loss of Well Control**

Name	24/7 Emergency Number	Non-Emergency Number
Wild Well Control, Inc. (Contracted Well Specialist)		281-353-5481

h) **Railroad Emergency Response** *(if applicable)*

Name	24/7 Emergency Number
NA	NA

i) **Mutual-Aid –**

All mutual-aid coordination within Weld County will be in accordance with the current Weld County Fire Chiefs Association Mutual-Aid Agreement. In addition, due to the size of Weld County and the large number of Fire Departments that make up the Weld County Fire Chiefs Association's, Mutual-Aid may be a mixture of full-time, combination, and volunteer FD resources responding to an incident at **Draco**.

SECTION – 4 SITE SPECIFIC INFORMATION

a) Site Description

The **Draco Pad** is a Civitas Resources oil and gas well site. The scope of this project is to drill twenty-six (26) horizontal oil and gas wells. There will be no on-site storage, all production ties into pipeline.

As part of the Weld County 1041 WOGLA permit process, the following sections of County Code address site layout, site drawings, and identify any sensitive areas and discuss any mitigation measures needed.

- Sec. 21-5-312 – Comprehensive Development Plans (CDPs)
- Section 21-5-320 – Application requirements for 1041 WOGLA Permit

b) Nearby Schools, High Occupancy Buildings, Waterways

- Schools - None within 2500' of location.
- High Occupancy Buildings - None within 2500' of location.
- Waterways – The Community Ditch is within 2500' of location.

c) Site Safety Requirements and General Safety Information

The minimum personal protective equipment (PPE) to enter any Civitas Resources production location includes a hard hat, safety glasses, safety toe boots, fire resistant clothing (FRC), and a 4-gas personal monitor. All contractors and visitors are responsible for providing their employees with the appropriate training on and use of PPE while on Civitas Resources locations. In addition, all contract personnel entering a Civitas Resources location to perform work must understand and abide by Civitas Resources contractor expectations relating to environmental, health, and safety requirements.

The primary hazards that any person must be aware of while on a Civitas Resources production location include, but are not limited to, the potential for release of hydrocarbon gases and/or liquids from production equipment/tanks, heavy truck and equipment traffic, loud noise, high pressures, and the potential for a flash fire. These hazards can vary depending on the work being performed.

- d) SDS:** Depending on the operations taking place on location, chemicals stored on-site may vary. In accordance with 49 CFR 1910.1200, Safety Data Sheets (SDS) will be made available for site personnel performing work and for first responders in a centralized location onsite.

e) Equipment List

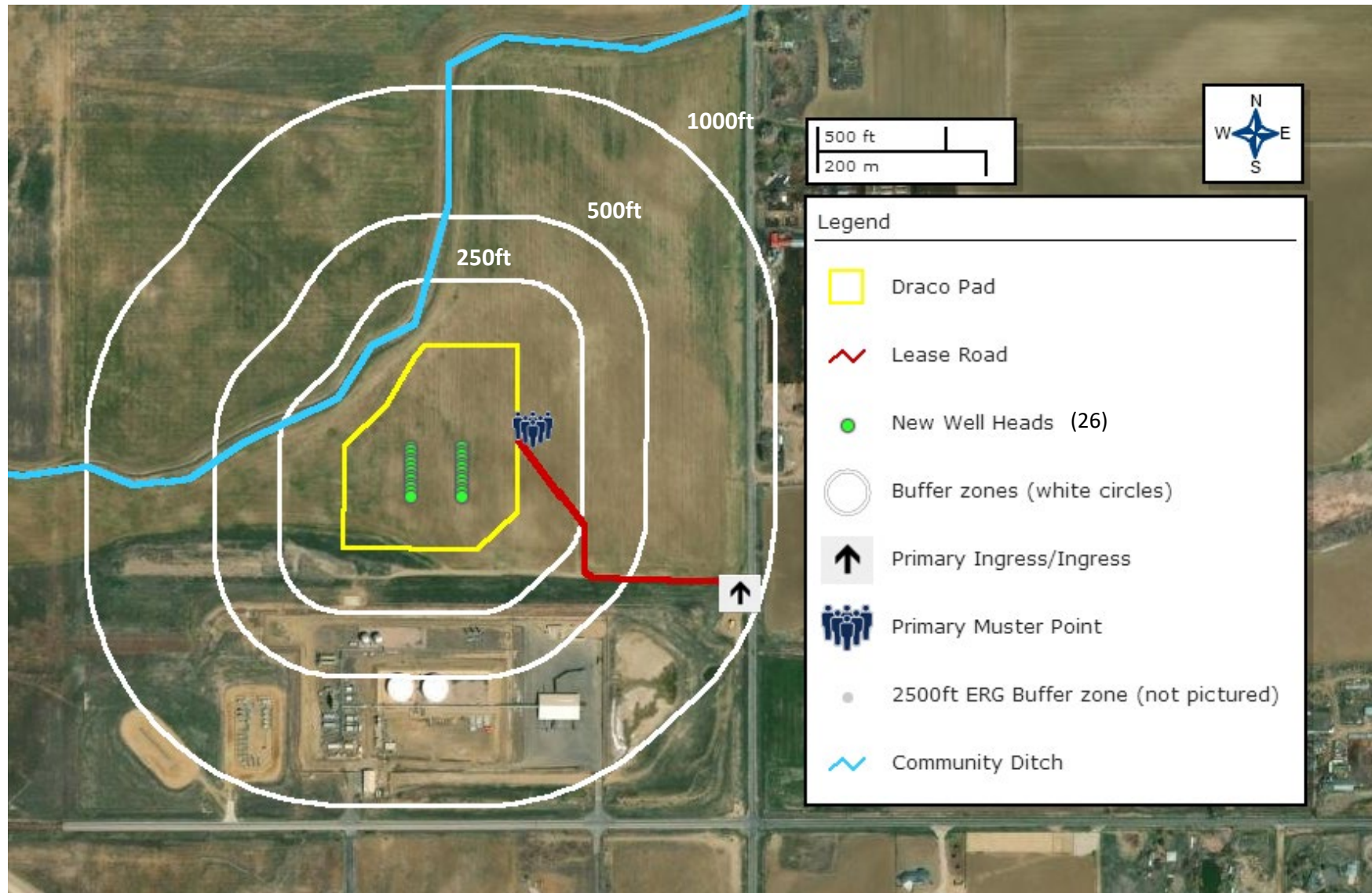
- 26 Separators
- 1HP 2 Phase Separator
- 1 Maintenance Vessel
- 4 Compressors
- 1 Enclosed Combustion Device
- 3 Pigging Stations
- 2 Surge Vessels
- 2 MLVTs
- 1 Communication Tower
- 2 Gas Meter Buildings
- 1 Meter Building
- 4 Gas Lift Meter Sheds.
- 2 Water Coolers
- 5 Oil Pump Skids
- 2 Water Pump Skids

f) Chemicals stored on-site (BBLs and Gallons)

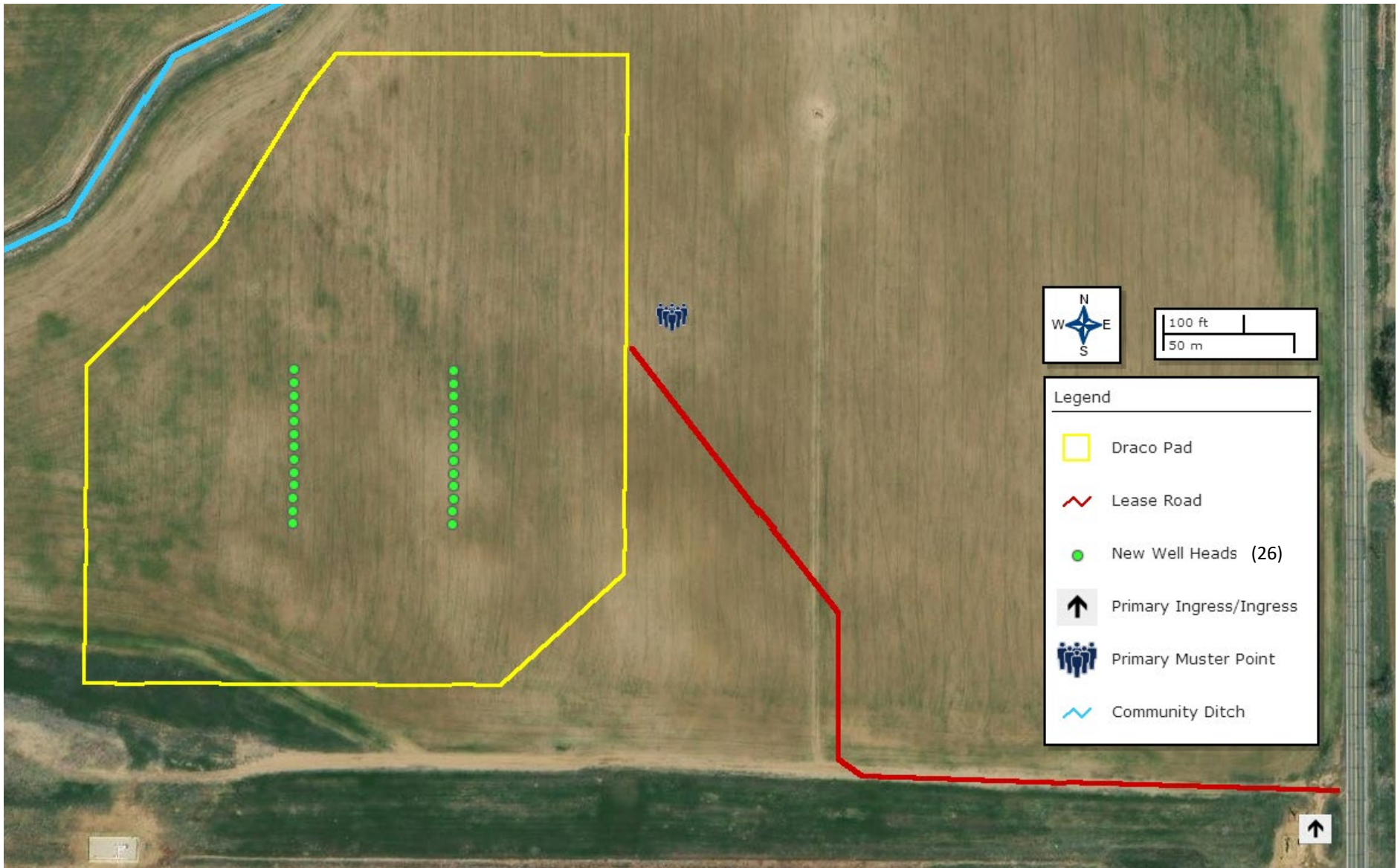
Drilling	DIESEL FUEL	285 BBLs x 1 Tank
	NEO FLOW MUD ADD.	400 BBLs x 6 Tanks
Completions	CNG	UNKNOWN
	15% HYDROCHLORIC ACID	119 BBLs
	BLEACH	119 BBLs
	BIOCIDE	265 GALLONS
Production	CRUDE OIL	TANKLESS FACILITY
	PRODUCED WATER	TANKLESS FACILITY
	METHANE	NA

SECTION 5 – MAPS AND DRAWINGS

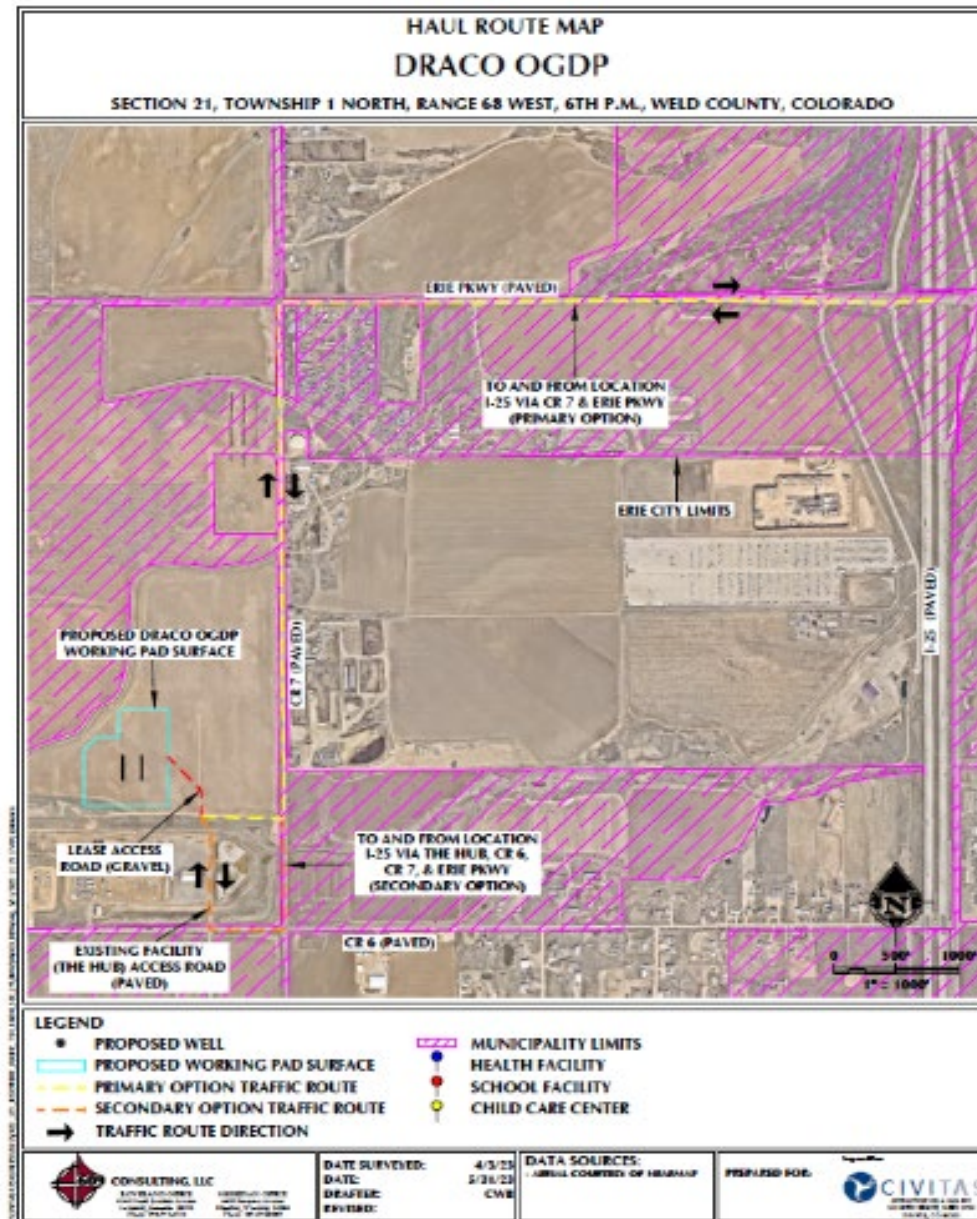
Project Area Map
250', 500', 1,000' Buffer



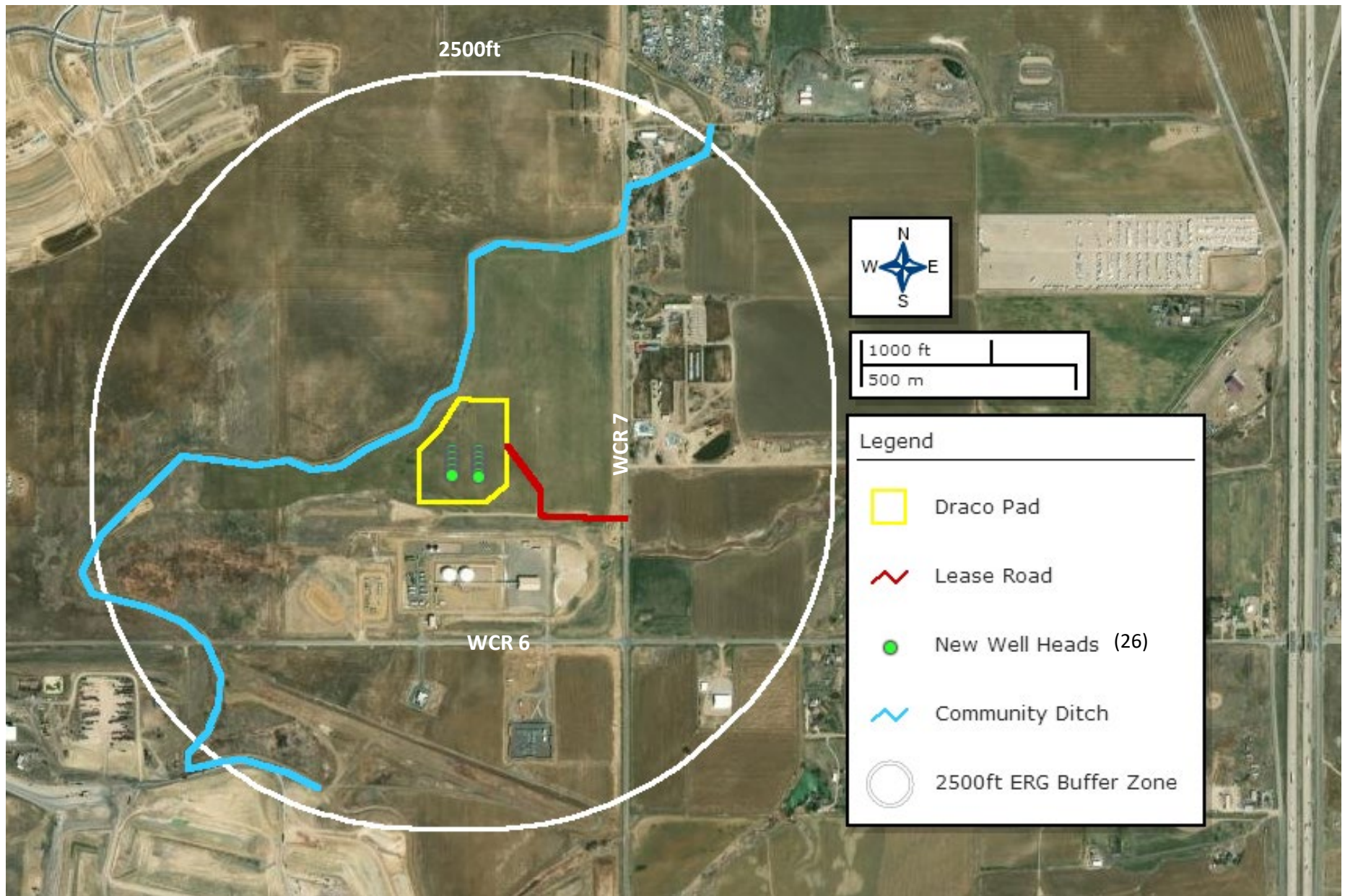
Project Location Access Map and Muster Point



Haul Route Map



2500 Foot Buffer Area Map



SECTION 6 – SPILL RESPONSE AND CLEAN-UP

a) Spill Response

There are multiple types of hydrocarbons and chemicals stored onsite which can be released/spilled during oil and gas production and exploration. Most commonly released are unrefined products such as crude oil and produced water. Refined petroleum products such as diesel, gasoline, produced oils, and motor oil spills are less common, but still equally important to mitigate. If a spill is discovered, it will be mitigated in accordance with Colorado Energy and Carbon Management Commission (ECMC), Colorado Department of Public Health and Environment (CDPHE), and Weld County LEPC requirements.

Once a release has been discovered, it will be immediately stopped and contained if possible and is safe to do so. When containing a spill; a combination of sorbent rolls, pads, mats, socks, or containment boom may be deployed, or earthen berms will be constructed around the release to keep spilled material contained and from spreading. During a spill, efforts will be made to minimize contact with live vegetation, nearby drainage, rivers, creeks, or streams. If the release is outside of secondary containment or poses a threat to flow off site, or impact environmentally sensitive areas, the spill response contractor should be notified for cleanup assistance, if needed, and for removal and disposal of spilled materials and contaminated areas.

In the event of a large incident requiring outside assistance/cascading resources, Civitas Resources has contracted with EnviroServe. EnviroServe possesses a working knowledge of oil and gas operations, emergency response and the Incident Command System (ICS). Once notified EnviroServe personnel can be on location within 12 hours.

b) Spill Reporting

The person reporting a spill may be required to supply the minimum spill assessment information to provide as a complete understanding of the incident as possible to local, state, or federal agencies if applicable. Some initial spill response actions and information that may be reported are presented below:

- A spill/release will be reported to the ECMC if released material is property of Civitas Resources and meets the ECMC reporting thresholds (see below), an example would be crude oil released from a separator or produced water from a water vault.
- A spill/release will be reported to the Weld County LEPC if released material is property of Civitas Resources and meets the ECMC reporting thresholds (see below) Mandated by Section 304 of the Emergency Planning and Community Right-To-Know Act (EPCRA).

A spill/release will be reported to the CDPHE if released material is in the custody of a third party for spills meeting CDPHE reporting thresholds or are of any size that impact or threaten to impact waters of the state, a residence or occupied structure, livestock or public byway. An example would be an oil hauler over filling a truck and spills product onto the ground next to a flowing irrigation ditch.

Spills are reportable to the ECMC and/or to Weld County LEPC in the following circumstances:

- A. the spill or release impacts or threatens to impact any waters of the state, a residence or occupied structure, livestock or a public byway;
- B. a spill or release in which 1 barrel or more is released outside of berms or other secondary containment;
- C. or any spill or release of 5 barrels or more. If the spill impacts or threatens to impact waters of the state (which include surface water, ground water and dry gullies or storm sewers leading to surface water), it must also be reported immediately to CDPHE (25-8-601 CRS). Petroleum releases of 25 gallons or more.

Once a spill is determined reportable, there is a 24-hour deadline to make initial notification to the ECMC/LEPC or CDPHE depending on the product ownership. Spills/releases in the custody of Civitas Resources will be reported by a Company representative. Spills/releases in the custody of a third party will be reported by the responsible company's EHS Department to the appropriate agency and to Civitas Resources.

These regulatory guidelines will be strictly followed by Civitas Resources and any contractors operating under Civitas Resources guidance during all activities at the **Draco in the SE ¼ of Section 4, Township 1 North, Range 68 West.**

SECTION 7 – REPORTABLE QUANTITIES

a) Reportable Quantities

Mandated by Section 312 of the Emergency Planning and Community Right-To-Know Act (EPCRA) – also known as SARA Title III – the Tier II form captures information about the types, quantities, and locations of hazardous chemicals at a given facility. The form also lists contact information for the facility's designated emergency point-of-contact.

- Any facility that is required to maintain SDSs under the Occupational Safety and Health Administration (OSHA) 49 CFR 1910.1200 regulations for hazardous chemicals stored or used in the workplace.
- Facilities with chemicals in quantities that equal or exceed the lists of lists thresholds must report.
- Propane, benzene, and methane are on the lists of lists and are known to be in crude oil. In addition, diesel is on the lists of lists and may be stored on oil and gas sites during construction and development.

b. Reportable Requirements

Instructions: If your facility meets the requirements under 40 CFR Part 370, you must submit your Tier II report to the State of Colorado every year before March 1st.

These regulatory requirements will be strictly followed by Civitas Resources and any contractors operating under Civitas Resources during all activities at the **Draco in the SE ¼ of Section 4, Township 1 North, Range 68 West**.

SECTION 8 – EVACUATION INFORMATION

a. Evacuation Plan Procedures (public)

The procedure to be used in alerting the public in the event of an incident which could pose a threat to life or property will be arranged and coordinated with first responders and Weld County Emergency Management.

In the event of an actual emergency, the following steps will be immediately taken:

1. The Civitas Resources representative will immediately notify first responders (911), to warn the public of potential chemical exposure.
2. First responders may conduct door to door evacuation notices in addition to Code Red (reverse 911).
3. Civitas Resources will monitor essential and non-essential personnel traffic on or near the incident site.
4. General:
 - a. The area included within the radius of exposure is considered to be the zone with the maximum potential hazard, per the Emergency Response Guide (ERG). When it is determined that conditions exist which create an additional area (beyond the initial zone of maximum potential hazard) vulnerable to possible hazard, public areas in the additional hazardous area will be evacuated.
 - b. In the event of an incident, after the public areas have been evacuated and traffic stopped, it is expected that local civil authorities will have arrived and within a few hours will have assumed direction of and control of the public, including all public areas.
 - c. Civitas Resources will fully cooperate with these authorities and will exert every effort by careful advice to such authorities to prevent panic or rumors.

Civitas Resources will dispatch appropriate personnel to the incident location as soon as possible. The company's personnel will cooperate with and provide such information to civil authorities as they might require.

SECTION – 9 TRAINING AND EXERCISES

The National Incident Management System (NIMS) guides all levels of government, nongovernmental organizations, and the private sector to work together to prevent, protect against, mitigate, respond to and recover from incidents.

NIMS provides stakeholders across the whole community with the shared vocabulary, systems and processes to successfully deliver the capabilities described in the National Preparedness System. NIMS defines operational systems that guide how personnel work together during incidents.

Civitas Resources plays a vital role in the Incident Management System. Civitas Resources has a significant impact on local, regional, and national economic recovery, and is part of the whole community and essential to the function of the Community Lifelines.

To maximize Civitas Resources impact and willingness to participate in incident operations, Civitas Resources should coordinate and integrate with first responders into a Unified Command (UC)—including planning, training, and preparedness exercises. In addition, it is also recommended all Civitas Resources employees who will respond to an incident have training in ICS 100 and ICS 200 at a minimum, for company and agency emergency response interoperability to manage a response.

EXERCISES: Exercises are an important component to test an organization's response readiness, training and familiarity with various emergency response scenarios, participation and engagement with local and or state agencies, and to develop lessons learned to improve emergency response capabilities. Per ECMC guidance number 16, a proposed schedule and type of exercises are provided below:

Civitas will conduct at least one exercise annually to test its ability to implement the Company Emergency Response Plan. Exercise types will consist of Tabletop, Communications, Functional, and Full-Scale. The type of exercise will be determined annually at the discretion of Civitas management.

Civitas continually works with first response agencies to ensure for coordinated efforts during emergencies. As an active member of the CPRN, Civitas is able to stay abreast of current efforts in the region that enhance response capabilities between the oil and gas industry and public safety agencies.

SECTION – 10 COORDINATION WITH FIRST RESPONDERS

- a) Civitas Resources will communicate site construction, drill spud, completion operations and Production Turn-In-Line dates to the Weld County Office of Emergency Management for coordination/communication with local first responders. These start dates will be provided a minimum of 7 business days prior to commencement or change in oil and gas development operations.
- b) In the event of an emergency requiring First Responders, Unified Command will be established between the Civitas Resources appointed company representative on location and First Responders present. A unified command post will be established based on conditions present at time of incident.
- c) Civitas Resources EHS representative and first responders identified in this Emergency Action Plan and Tactical Response Plan have reviewed both documents and have discussed coordination efforts in the event of an emergency situation requiring first responder assistance.
- d) **Industry Mutual-Aid:** Civitas Resources is an active member of the Colorado Preparedness Response Network (CPRN), which supports mutual-aid collaboration between industry and public emergency response organizations to achieve a coordinated and effective response to an all-hazards event.

SECTION – 11 Plan Review and Update Procedures

a) Multi-year plan review and update:

Civitas intends to update the area-wide Emergency Response Plan every five (5) years or after a change in personnel, operations, or ownership.

b) Post incident plan review and update:

Civitas intends to update the area-wide Emergency Response Plan after a spill/release in order to evaluate and record the plan's effectiveness. The plan will also be updated after training and exercises that reveal gaps/deficiencies in the plan's effectiveness.

CIVITAS RESOURCES, INC.

Extraction Oil and Gas, LLC

DRACO PAD

ADDRESS (OEM will input once address is issued)

LAT: 40.033221°N/LONG: -105.003518°W

NOTIFICATIONS

CIVITAS RESOURCES 24-HOUR HOTLINE

720-927-1813

WELD COUNTY REGIONAL COMMUNICATIONS CENTER

911 AND 970-350-9600 (NON- EMERGENCY)

MOUNTAIN VIEW FIRE

911 AND 303-772-0710 (NON- EMERGENCY)

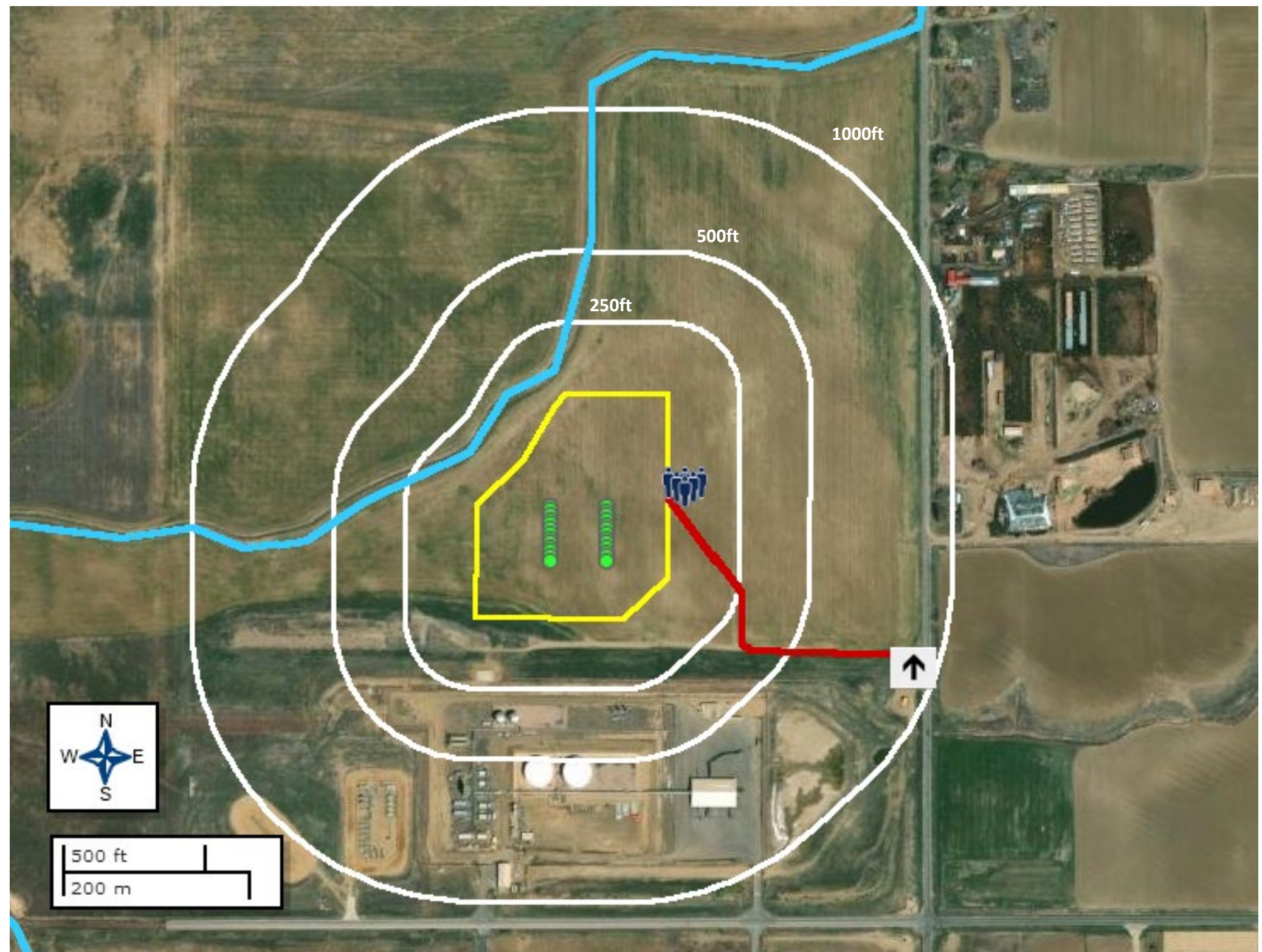
WELD COUNTY OEM

970-350-9600

CRITICAL RECEPTORS

COMMUNITY DITCH

CRESTONE PEAK OIL HUB



Legend



Draco Pad



Buffer zones (white circles)



2500ft ERG Buffer zone (not pictured)



Lease Road



Primary Ingress/Ingress



Community Ditch



New Well Heads (26)



Primary Muster Point

FIRE DEPARTMENT RESPONSE GUIDELINES	INDUSTRY RESPONSE OBJECTIVES	FACILITY INFORMATION																																																																															
<div>Command</div> <div>FIRE DEPARTMENT RESPONSE GUIDELINES</div> <div>COMMAND</div> <ul style="list-style-type: none">Establish initial command post near the oil & gas location entrance.Position should provide a clear view of the entire sceneAdvise responding units and resources to stage near the location entrance.Locate operator lease sign on location (located at the entrance /site access)If industry personnel are not on location, call the 24-Hour Emergency Contact number located on the sign.Establish unified command with operator on-site liaisonDevelop incident action plan with the operator to mitigate incidentStrategy - <u>Always defensive unless a life safety need is identified!</u> <div>INCIDENT STABILIZATION</div> <ul style="list-style-type: none">Implement Hazardous Materials response protocolsAll personnel operating in hazard zones should be in appropriate PPE, to include a personal mobile air monitoring deviceEstablish Hot, Warm, Cold Zones, and ERG zonesExposure Concerns --- Equipment, nearby structures, neighborhoods, roadways, etc.Monitor weather conditions, especially wind directionAir monitoring for vulnerable areas and locations around the incident.Conduct evacuations of citizens, bystanders, and resources at risk.Identify and address any water supply and/or foam requirements necessary to mitigate the incident <div>SPECIAL CONSIDERATIONS</div> <ul style="list-style-type: none">If evacuations are needed, coordinate with Carbon Valley EMA before ordering an evacuation to establish evacuation routes, shelters, shelter in-place and to utilize Code Red (reverse 9-1-1).Request mutual aid apparatus and equipment asap to minimize operational delaysConsider and address any potential impacts to critical receptors identified near the location.Consider requesting a HazMat Team if needed to assist with mitigation.Consider requiring a fire investigation for any fire and/or explosion.Keep the public and stakeholders informed of response activities.Notify FAA if air Traffic restrictions are needed (requested through OEM) <u>(very large incident)</u>	<div>Ensure safety of the public, first responders, employees, and contractors. Minimize impact to the environment and local community. The following response objectives checklist shall be followed:</div> <div>SAFETY – PROTECT LIFE</div> <ul style="list-style-type: none">Evaluate and account for all personnelIsolate all potential ignition sourcesEstablish site control (safe perimeter and evacuation routes)Contact emergency services as needed (911, Fire, LEPC)Identify hazard(s) of emitted material (obtain SDS)Implement air monitoring around impacted areaContinually assess site hazards/risks <div>RESPONSE – INCIDENT STABILIZATION</div> <ul style="list-style-type: none">Notify internal personnel and agenciesAssign on-site liaison to the incident commanderEstablish a unified command post and field communicationsEstablish Hot, Warm, Cold Zones, and ERG zoneIdentify and establish staging areas to support response operationsActivate emergency shutdown procedures (ESD)Activate response action contractors for equipment and manpower as needed (e.g, Well Control, spill/HazMat clean-up, etc.) <div>ENVIRONMENTAL – PROTECT THE ENVIRONMENT</div> <ul style="list-style-type: none">Identify, prioritize, and protect environmentally sensitive areasVerify if water has been impactedImplement waste handling, disposal and decontamination procedures as neededContain and recover spilled materialsNotify appropriate agencies <div>SPECIAL CONSIDERATIONS</div> <ul style="list-style-type: none">Keep the public and stakeholders informed of response activities.	<div>Well Pad Liquid Storage:</div> <ul style="list-style-type: none">Oil (BBL) – N/A (Tankless)Water (BBL) – N/A (Tankless)*1 Barrel (BBL) = 42 Gallons <div>Specific Facility Hazardous Conditions: (chemicals stored on site)</div> <table><tr><td rowspan="4">Drilling</td><td>DIESEL FUEL</td><td>285 BBLs x 1 Tank</td></tr><tr><td>NEO FLOW MUD ADD.</td><td>400 BBLs x 6 Tanks</td></tr><tr><td></td><td></td></tr><tr><td></td><td></td></tr><tr><td colspan="3">Storage Location</td></tr><tr><td colspan="3"><ul style="list-style-type: none">STORAGE LOCATION VARIES FROM SITE TO SITE. CIVITAS WILL HAVE AN AERIAL VIEW OF EACH SITES STORAGE LOCATIONS AVAILABLE FOR RESPONDERS</td></tr><tr><td rowspan="4">Completions</td><td>CNG</td><td>UNKNOWN</td></tr><tr><td>15% HYDROCHLORIC ACID</td><td>119 BBLS</td></tr><tr><td>BLEACH</td><td>119 BBLS</td></tr><tr><td>BIOCIDE</td><td>265 GALLONS</td></tr><tr><td colspan="3">Storage Location</td></tr><tr><td colspan="3"><ul style="list-style-type: none">STORAGE LOCATION VARIES FROM SITE TO SITE. CIVITAS WILL HAVE AN AERIAL VIEW OF EACH SITES STORAGE LOCATIONS AVAILABLE FOR RESPONDERS</td></tr><tr><td rowspan="5">Flowback</td><td>NA</td><td></td></tr><tr><td></td><td></td></tr><tr><td></td><td></td></tr><tr><td></td><td></td></tr><tr><td></td><td></td></tr><tr><td colspan="3">Storage Location</td></tr><tr><td colspan="3"><ul style="list-style-type: none">STORAGE LOCATION VARIES FROM SITE TO SITE. CIVITAS WILL HAVE AN AERIAL VIEW OF EACH SITES STORAGE LOCATIONS AVAILABLE FOR RESPONDERSNo Flowback Operations</td></tr><tr><td rowspan="5">Production</td><td>CRUDE OIL</td><td>0 BBLs x 0 Tank</td></tr><tr><td>PRODUCED WATER</td><td>0 BBLs x 0 Tank</td></tr><tr><td></td><td></td></tr><tr><td></td><td></td></tr><tr><td></td><td></td></tr><tr><td colspan="3">Storage Location</td></tr><tr><td colspan="3"><ul style="list-style-type: none">THIS PAD TRANSPORTS ALL PRODUCT VIA PIPELINE; NO ON SITE STORAGE</td></tr><tr><td colspan="3">Is Water Supply Available on Location? NO</td></tr><tr><td colspan="3">Fire hydrants- NA</td></tr><tr><td colspan="3"></td></tr><tr><td colspan="3">Water Storage Tanks- NA</td></tr><tr><td colspan="3"></td></tr></table>	Drilling	DIESEL FUEL	285 BBLs x 1 Tank	NEO FLOW MUD ADD.	400 BBLs x 6 Tanks					Storage Location			<ul style="list-style-type: none">STORAGE LOCATION VARIES FROM SITE TO SITE. CIVITAS WILL HAVE AN AERIAL VIEW OF EACH SITES STORAGE LOCATIONS AVAILABLE FOR RESPONDERS			Completions	CNG	UNKNOWN	15% HYDROCHLORIC ACID	119 BBLS	BLEACH	119 BBLS	BIOCIDE	265 GALLONS	Storage Location			<ul style="list-style-type: none">STORAGE LOCATION VARIES FROM SITE TO SITE. CIVITAS WILL HAVE AN AERIAL VIEW OF EACH SITES STORAGE LOCATIONS AVAILABLE FOR RESPONDERS			Flowback	NA										Storage Location			<ul style="list-style-type: none">STORAGE LOCATION VARIES FROM SITE TO SITE. CIVITAS WILL HAVE AN AERIAL VIEW OF EACH SITES STORAGE LOCATIONS AVAILABLE FOR RESPONDERSNo Flowback Operations			Production	CRUDE OIL	0 BBLs x 0 Tank	PRODUCED WATER	0 BBLs x 0 Tank							Storage Location			<ul style="list-style-type: none">THIS PAD TRANSPORTS ALL PRODUCT VIA PIPELINE; NO ON SITE STORAGE			Is Water Supply Available on Location? NO			Fire hydrants- NA						Water Storage Tanks- NA					
Drilling	DIESEL FUEL	285 BBLs x 1 Tank																																																																															
	NEO FLOW MUD ADD.	400 BBLs x 6 Tanks																																																																															
Storage Location																																																																																	
<ul style="list-style-type: none">STORAGE LOCATION VARIES FROM SITE TO SITE. CIVITAS WILL HAVE AN AERIAL VIEW OF EACH SITES STORAGE LOCATIONS AVAILABLE FOR RESPONDERS																																																																																	
Completions	CNG	UNKNOWN																																																																															
	15% HYDROCHLORIC ACID	119 BBLS																																																																															
	BLEACH	119 BBLS																																																																															
	BIOCIDE	265 GALLONS																																																																															
Storage Location																																																																																	
<ul style="list-style-type: none">STORAGE LOCATION VARIES FROM SITE TO SITE. CIVITAS WILL HAVE AN AERIAL VIEW OF EACH SITES STORAGE LOCATIONS AVAILABLE FOR RESPONDERS																																																																																	
Flowback	NA																																																																																
Storage Location																																																																																	
<ul style="list-style-type: none">STORAGE LOCATION VARIES FROM SITE TO SITE. CIVITAS WILL HAVE AN AERIAL VIEW OF EACH SITES STORAGE LOCATIONS AVAILABLE FOR RESPONDERSNo Flowback Operations																																																																																	
Production	CRUDE OIL	0 BBLs x 0 Tank																																																																															
	PRODUCED WATER	0 BBLs x 0 Tank																																																																															
Storage Location																																																																																	
<ul style="list-style-type: none">THIS PAD TRANSPORTS ALL PRODUCT VIA PIPELINE; NO ON SITE STORAGE																																																																																	
Is Water Supply Available on Location? NO																																																																																	
Fire hydrants- NA																																																																																	
Water Storage Tanks- NA																																																																																	