

Project: Rio Blanco County, CO
Site: ELU A18 495 Pad
Well: ELU A18 FED 14C-7-495
Wellbore: OH
Design: Design #5
Latitude: 39.709112
Longitude: -108.104318
Ground Level: 8029.0
RKB=30' @ 8059.0usft (TBD)

PROJECT DETAILS: Rio Blanco County, CO
Geodetic System: Universal Transverse Mercator (US Survey Feet)
Datum: NAD 1927 - Western US
Ellipsoid: Clarke 1866
Zone: Zone 12N (114 W to 108 W)
System Datum: Mean Sea Level

REFERENCE INFORMATION
Vertical (TVD) Reference: RKB=30' @ 8059.0usft (TBD)
Section (VS) Reference: Slot - 14C-7(0.0N, 0.0E)
Measured Depth Reference: RKB=30' @ 8059.0usft (TBD)
Calculation Method: Minimum Curvature

FORMATION TOP DETAILS

TVDPath	MDPath	Formation
4036.0	4223.8	Wasatch
6586.0	6915.0	Wasatch G
6986.0	7347.7	Fort Union
9060.0	9507.3	Ohio Creek
9714.0	10157.4	Williams Fork
12614.0	13058.1	Cameo
13114.0	13558.2	Rollins

SECTION DETAILS

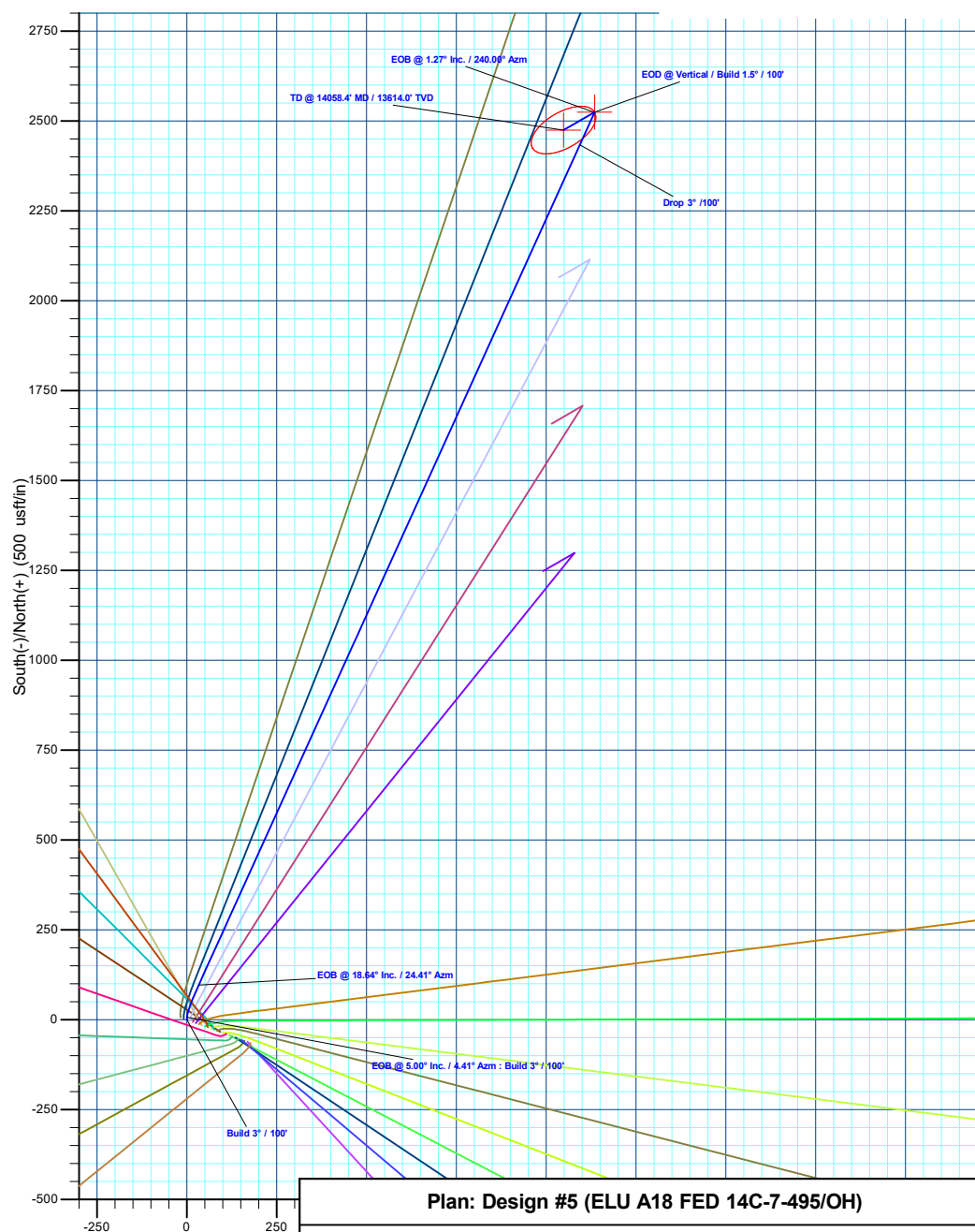
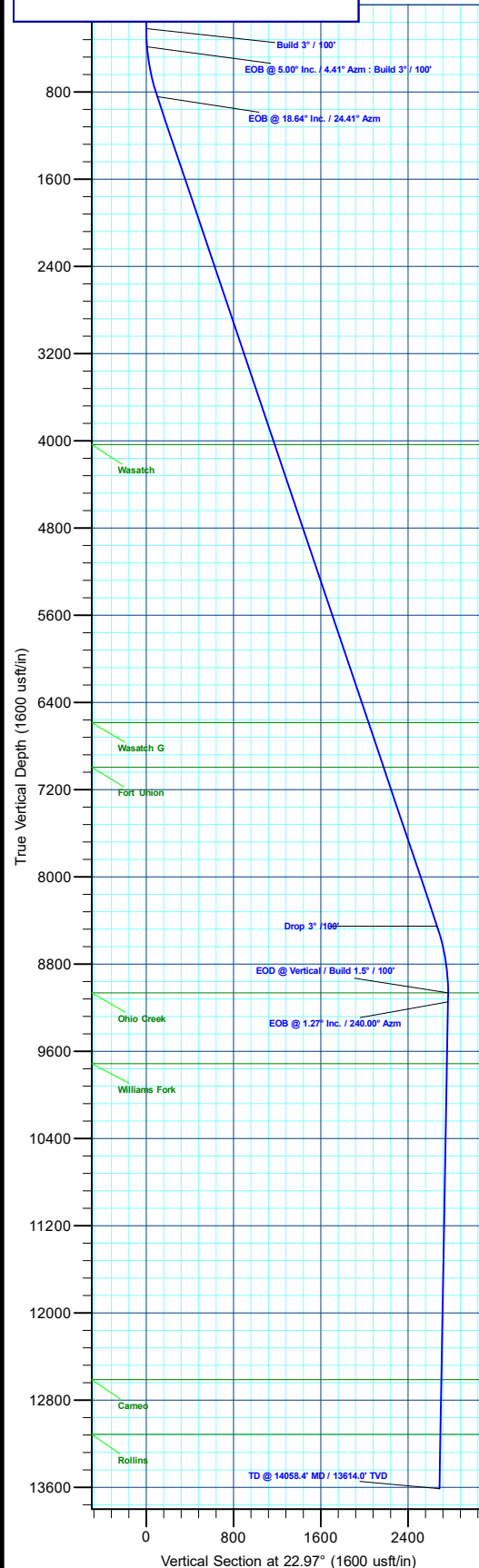
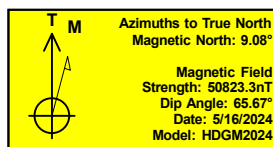
MD	Inc	Azi	TVD	+N/-S	+E/-W	Dleg	TFace	VSec	Annotation
0.0	0.00	0.00	0.0	0.0	0.0	0.00	0.00	0.0	Build 3° / 100'
220.0	0.00	0.00	220.0	0.0	0.0	0.00	0.00	0.0	EOB @ 5.00° Inc. / 4.41° Azm : Build 3° / 100'
386.7	5.00	4.41	386.5	7.2	0.6	3.00	4.41	6.9	EOB @ 18.64° Inc. / 24.41° Azm
854.7	18.64	24.41	843.7	96.1	33.2	3.00	26.78	101.5	Drop 3° / 100'
8885.9	18.64	24.41	8453.6	2433.6	1094.0	0.00	0.00	2667.6	EOB @ Vertical / Build 1.5° / 100'
9507.3	0.00	0.00	9064.0	2524.9	1135.4	3.00	180.00	2767.7	EOB @ 1.27° Inc. / 240.00° Azm
9592.0	1.27	240.00	9148.7	2524.4	1134.6	1.50	240.00	2767.0	TD @ 14058.4' MD / 13614.0' TVD
14058.4	1.27	240.00	13614.0	2474.9	1048.8	0.00	0.00	2687.9	

DESIGN TARGET DETAILS

Name	TVD	+N/-S	+E/-W	Northing	Easting	Latitude	Longitude
14C-7 - OHCR	9064.0	2524.9	1135.4	14435840.27	2455924.54	39.716041	-108.100284
14C-7 - PBHL	13614.0	2474.9	1048.8	14435787.50	2455839.60	39.715904	-108.100591

WELL DETAILS: ELU A18 FED 14C-7-495

	Ground Level : 8029.0					
+N/-S	0.0	+E/-W	0.0	Northing	Easting	Latitude
				14433280.04	2454871.32	39.709112
						Longitude
						-108.104318
						14C-7



Plan: Design #5 (ELU A18 FED 14C-7-495/OH)

Created By: Will Jircik

Date: 21:46, June 09 2024



Caerus Oil & Gas

Rio Blanco County, CO

ELU A18 495 Pad

ELU A18 FED 14C-7-495 - Slot 14C-7

OH

Plan: Design #5

KLX Well Planning Report

09 June, 2024



Database:	KLXDirectional-AD	Local Co-ordinate Reference:	Well ELU A18 FED 14C-7-495 - Slot 14C-7
Company:	Caerus Oil & Gas	TVD Reference:	RKB=30' @ 8059.0usft (TBD)
Project:	Rio Blanco County, CO	MD Reference:	RKB=30' @ 8059.0usft (TBD)
Site:	ELU A18 495 Pad	North Reference:	True
Well:	ELU A18 FED 14C-7-495	Survey Calculation Method:	Minimum Curvature
Wellbore:	OH		
Design:	Design #5		

Project	Rio Blanco County, CO		
Map System:	Universal Transverse Mercator (US Survey Feet)	System Datum:	Mean Sea Level
Geo Datum:	NAD 1927 - Western US		
Map Zone:	Zone 12N (114 W to 108 W)		

Site		ELU A18 495 Pad				
Site Position:		Northing:	14,433,285.62 usft	Latitude:	39.709129	
From:	Map	Easting:	2,454,854.21 usft	Longitude:	-108.104378	
Position Uncertainty:		0.0 usft	Slot Radius:	13-3/16 "	Grid Convergence:	1.85 °

Well	ELU A18 FED 14C-7-495 - Slot 14C-7					
Well Position	+N/-S	-6.1 usft	Northing:	14,433,280.04 usft	Latitude:	39.709112
	+E/-W	16.9 usft	Easting:	2,454,871.32 usft	Longitude:	-108.104318
Position Uncertainty		0.0 usft	Wellhead Elevation:		Ground Level:	8,029.0 usft

Wellbore	OH				
Magnetics	Model Name	Sample Date	Declination (°)	Dip Angle (°)	Field Strength (nT)
	HDGM2024	5/16/2024	9.08	65.67	50,823.30000000

Design	Design #5			
Audit Notes:				
Version:	Phase:	PLAN	Tie On Depth:	0.0
Vertical Section:	Depth From (TVD) (usft)	+N/-S (usft)	+E/-W (usft)	Direction (°)
	0.0	0.0	0.0	22.97

Plan Sections										
Measured Depth (usft)	Inclination (°)	Azimuth (°)	Vertical Depth (usft)	+N/-S (usft)	+E/-W (usft)	Dogleg Rate (°/100usft)	Build Rate (°/100usft)	Turn Rate (°/100usft)	TFO (°)	Target
0.0	0.00	0.00	0.0	0.0	0.0	0.00	0.00	0.00	0.00	
220.0	0.00	0.00	220.0	0.0	0.0	0.00	0.00	0.00	0.00	
386.7	5.00	4.41	386.5	7.2	0.6	3.00	3.00	0.00	4.41	
854.7	18.64	24.41	843.7	96.1	33.2	3.00	2.91	4.27	26.78	
8,885.9	18.64	24.41	8,453.6	2,433.6	1,094.0	0.00	0.00	0.00	0.00	
9,507.3	0.00	0.00	9,064.0	2,524.9	1,135.4	3.00	-3.00	0.00	180.00	14C-7 - OHCR
9,592.0	1.27	240.00	9,148.7	2,524.4	1,134.6	1.50	1.50	-141.63	240.00	
14,058.4	1.27	240.00	13,614.0	2,474.9	1,048.8	0.00	0.00	0.00	0.00	14C-7 - PBHL

Database:	KLXDirectional-AD	Local Co-ordinate Reference:	Well ELU A18 FED 14C-7-495 - Slot 14C-7
Company:	Caerus Oil & Gas	TVD Reference:	RKB=30' @ 8059.0usft (TBD)
Project:	Rio Blanco County, CO	MD Reference:	RKB=30' @ 8059.0usft (TBD)
Site:	ELU A18 495 Pad	North Reference:	True
Well:	ELU A18 FED 14C-7-495	Survey Calculation Method:	Minimum Curvature
Wellbore:	OH		
Design:	Design #5		

Planned Survey									
Measured Depth (usft)	Inclination (°)	Azimuth (°)	Vertical Depth (usft)	+N/-S (usft)	+E/-W (usft)	Vertical Section (usft)	Dogleg Rate (°/100usft)	Build Rate (°/100usft)	Turn Rate (°/100usft)
0.0	0.00	0.00	0.0	0.0	0.0	0.0	0.00	0.00	0.00
100.0	0.00	0.00	100.0	0.0	0.0	0.0	0.00	0.00	0.00
200.0	0.00	0.00	200.0	0.0	0.0	0.0	0.00	0.00	0.00
Build 3° / 100'									
220.0	0.00	0.00	220.0	0.0	0.0	0.0	0.00	0.00	0.00
300.0	2.40	4.41	300.0	1.7	0.1	1.6	3.00	3.00	0.00
EOB @ 5.00° Inc. / 4.41° Azm : Build 3° / 100'									
386.7	5.00	4.41	386.5	7.2	0.6	6.9	3.00	3.00	0.00
400.0	5.36	6.34	399.7	8.4	0.7	8.0	3.00	2.70	14.47
500.0	8.18	15.23	499.0	20.0	3.1	19.6	3.00	2.82	8.89
600.0	11.09	19.54	597.6	35.9	8.1	36.2	3.00	2.91	4.30
700.0	14.04	22.06	695.2	56.2	15.9	58.0	3.00	2.95	2.52
800.0	17.01	23.72	791.5	80.8	26.4	84.7	3.00	2.97	1.66
EOB @ 18.64° Inc. / 24.41° Azm									
854.7	18.64	24.41	843.7	96.1	33.2	101.5	3.00	2.98	1.26
900.0	18.64	24.41	886.5	109.3	39.2	115.9	0.00	0.00	0.00
1,000.0	18.64	24.41	981.3	138.4	52.4	147.9	0.00	0.00	0.00
1,100.0	18.64	24.41	1,076.0	167.5	65.6	179.8	0.00	0.00	0.00
1,200.0	18.64	24.41	1,170.8	196.6	78.8	211.8	0.00	0.00	0.00
1,300.0	18.64	24.41	1,265.6	225.7	92.0	243.7	0.00	0.00	0.00
1,400.0	18.64	24.41	1,360.3	254.8	105.2	275.7	0.00	0.00	0.00
1,500.0	18.64	24.41	1,455.1	284.0	118.4	307.7	0.00	0.00	0.00
1,600.0	18.64	24.41	1,549.8	313.1	131.6	339.6	0.00	0.00	0.00
1,700.0	18.64	24.41	1,644.6	342.2	144.8	371.6	0.00	0.00	0.00
1,800.0	18.64	24.41	1,739.3	371.3	158.1	403.5	0.00	0.00	0.00
1,900.0	18.64	24.41	1,834.1	400.4	171.3	435.5	0.00	0.00	0.00
2,000.0	18.64	24.41	1,928.8	429.5	184.5	467.4	0.00	0.00	0.00
2,100.0	18.64	24.41	2,023.6	458.6	197.7	499.4	0.00	0.00	0.00
2,200.0	18.64	24.41	2,118.3	487.7	210.9	531.3	0.00	0.00	0.00
2,300.0	18.64	24.41	2,213.1	516.8	224.1	563.3	0.00	0.00	0.00
2,400.0	18.64	24.41	2,307.9	545.9	237.3	595.2	0.00	0.00	0.00
2,500.0	18.64	24.41	2,402.6	575.0	250.5	627.2	0.00	0.00	0.00
2,600.0	18.64	24.41	2,497.4	604.1	263.7	659.1	0.00	0.00	0.00
2,700.0	18.64	24.41	2,592.1	633.2	276.9	691.1	0.00	0.00	0.00
2,800.0	18.64	24.41	2,686.9	662.3	290.1	723.0	0.00	0.00	0.00
2,900.0	18.64	24.41	2,781.6	691.4	303.3	755.0	0.00	0.00	0.00
3,000.0	18.64	24.41	2,876.4	720.5	316.6	786.9	0.00	0.00	0.00
3,100.0	18.64	24.41	2,971.1	749.6	329.8	818.9	0.00	0.00	0.00
3,200.0	18.64	24.41	3,065.9	778.7	343.0	850.8	0.00	0.00	0.00
3,300.0	18.64	24.41	3,160.6	807.8	356.2	882.8	0.00	0.00	0.00
3,400.0	18.64	24.41	3,255.4	837.0	369.4	914.7	0.00	0.00	0.00
3,500.0	18.64	24.41	3,350.2	866.1	382.6	946.7	0.00	0.00	0.00
3,600.0	18.64	24.41	3,444.9	895.2	395.8	978.6	0.00	0.00	0.00
3,700.0	18.64	24.41	3,539.7	924.3	409.0	1,010.6	0.00	0.00	0.00
3,800.0	18.64	24.41	3,634.4	953.4	422.2	1,042.5	0.00	0.00	0.00
3,900.0	18.64	24.41	3,729.2	982.5	435.4	1,074.5	0.00	0.00	0.00
4,000.0	18.64	24.41	3,823.9	1,011.6	448.6	1,106.5	0.00	0.00	0.00
4,100.0	18.64	24.41	3,918.7	1,040.7	461.8	1,138.4	0.00	0.00	0.00
4,200.0	18.64	24.41	4,013.4	1,069.8	475.0	1,170.4	0.00	0.00	0.00
Wasatch									
4,223.8	18.64	24.41	4,036.0	1,076.7	478.2	1,178.0	0.00	0.00	0.00
4,300.0	18.64	24.41	4,108.2	1,098.9	488.3	1,202.3	0.00	0.00	0.00
4,400.0	18.64	24.41	4,202.9	1,128.0	501.5	1,234.3	0.00	0.00	0.00
4,500.0	18.64	24.41	4,297.7	1,157.1	514.7	1,266.2	0.00	0.00	0.00

Database:	KLXDirectional-AD	Local Co-ordinate Reference:	Well ELU A18 FED 14C-7-495 - Slot 14C-7
Company:	Caerus Oil & Gas	TVD Reference:	RKB=30' @ 8059.0usft (TBD)
Project:	Rio Blanco County, CO	MD Reference:	RKB=30' @ 8059.0usft (TBD)
Site:	ELU A18 495 Pad	North Reference:	True
Well:	ELU A18 FED 14C-7-495	Survey Calculation Method:	Minimum Curvature
Wellbore:	OH		
Design:	Design #5		

Planned Survey									
Measured Depth (usft)	Inclination (°)	Azimuth (°)	Vertical Depth (usft)	+N/-S (usft)	+E/-W (usft)	Vertical Section (usft)	Dogleg Rate (°/100usft)	Build Rate (°/100usft)	Turn Rate (°/100usft)
4,600.0	18.64	24.41	4,392.5	1,186.2	527.9	1,298.2	0.00	0.00	0.00
4,700.0	18.64	24.41	4,487.2	1,215.3	541.1	1,330.1	0.00	0.00	0.00
4,800.0	18.64	24.41	4,582.0	1,244.4	554.3	1,362.1	0.00	0.00	0.00
4,900.0	18.64	24.41	4,676.7	1,273.5	567.5	1,394.0	0.00	0.00	0.00
5,000.0	18.64	24.41	4,771.5	1,302.6	580.7	1,426.0	0.00	0.00	0.00
5,100.0	18.64	24.41	4,866.2	1,331.7	593.9	1,457.9	0.00	0.00	0.00
5,200.0	18.64	24.41	4,961.0	1,360.8	607.1	1,489.9	0.00	0.00	0.00
5,300.0	18.64	24.41	5,055.7	1,390.0	620.3	1,521.8	0.00	0.00	0.00
5,400.0	18.64	24.41	5,150.5	1,419.1	633.5	1,553.8	0.00	0.00	0.00
5,500.0	18.64	24.41	5,245.2	1,448.2	646.8	1,585.7	0.00	0.00	0.00
5,600.0	18.64	24.41	5,340.0	1,477.3	660.0	1,617.7	0.00	0.00	0.00
5,700.0	18.64	24.41	5,434.8	1,506.4	673.2	1,649.6	0.00	0.00	0.00
5,800.0	18.64	24.41	5,529.5	1,535.5	686.4	1,681.6	0.00	0.00	0.00
5,900.0	18.64	24.41	5,624.3	1,564.6	699.6	1,713.5	0.00	0.00	0.00
6,000.0	18.64	24.41	5,719.0	1,593.7	712.8	1,745.5	0.00	0.00	0.00
6,100.0	18.64	24.41	5,813.8	1,622.8	726.0	1,777.4	0.00	0.00	0.00
6,200.0	18.64	24.41	5,908.5	1,651.9	739.2	1,809.4	0.00	0.00	0.00
6,300.0	18.64	24.41	6,003.3	1,681.0	752.4	1,841.3	0.00	0.00	0.00
6,400.0	18.64	24.41	6,098.0	1,710.1	765.6	1,873.3	0.00	0.00	0.00
6,500.0	18.64	24.41	6,192.8	1,739.2	778.8	1,905.2	0.00	0.00	0.00
6,600.0	18.64	24.41	6,287.5	1,768.3	792.0	1,937.2	0.00	0.00	0.00
6,700.0	18.64	24.41	6,382.3	1,797.4	805.3	1,969.2	0.00	0.00	0.00
6,800.0	18.64	24.41	6,477.1	1,826.5	818.5	2,001.1	0.00	0.00	0.00
6,900.0	18.64	24.41	6,571.8	1,855.6	831.7	2,033.1	0.00	0.00	0.00
Wasatch G									
6,915.0	18.64	24.41	6,586.0	1,860.0	833.6	2,037.8	0.00	0.00	0.00
7,000.0	18.64	24.41	6,666.6	1,884.7	844.9	2,065.0	0.00	0.00	0.00
7,100.0	18.64	24.41	6,761.3	1,913.8	858.1	2,097.0	0.00	0.00	0.00
7,200.0	18.64	24.41	6,856.1	1,943.0	871.3	2,128.9	0.00	0.00	0.00
7,300.0	18.64	24.41	6,950.8	1,972.1	884.5	2,160.9	0.00	0.00	0.00
Fort Union									
7,347.7	18.64	24.41	6,996.0	1,985.9	890.8	2,176.1	0.00	0.00	0.00
7,400.0	18.64	24.41	7,045.6	2,001.2	897.7	2,192.8	0.00	0.00	0.00
7,500.0	18.64	24.41	7,140.3	2,030.3	910.9	2,224.8	0.00	0.00	0.00
7,600.0	18.64	24.41	7,235.1	2,059.4	924.1	2,256.7	0.00	0.00	0.00
7,700.0	18.64	24.41	7,329.8	2,088.5	937.3	2,288.7	0.00	0.00	0.00
7,800.0	18.64	24.41	7,424.6	2,117.6	950.5	2,320.6	0.00	0.00	0.00
7,900.0	18.64	24.41	7,519.4	2,146.7	963.8	2,352.6	0.00	0.00	0.00
8,000.0	18.64	24.41	7,614.1	2,175.8	977.0	2,384.5	0.00	0.00	0.00
8,100.0	18.64	24.41	7,708.9	2,204.9	990.2	2,416.5	0.00	0.00	0.00
8,200.0	18.64	24.41	7,803.6	2,234.0	1,003.4	2,448.4	0.00	0.00	0.00
8,300.0	18.64	24.41	7,898.4	2,263.1	1,016.6	2,480.4	0.00	0.00	0.00
8,400.0	18.64	24.41	7,993.1	2,292.2	1,029.8	2,512.3	0.00	0.00	0.00
8,500.0	18.64	24.41	8,087.9	2,321.3	1,043.0	2,544.3	0.00	0.00	0.00
8,600.0	18.64	24.41	8,182.6	2,350.4	1,056.2	2,576.2	0.00	0.00	0.00
8,700.0	18.64	24.41	8,277.4	2,379.5	1,069.4	2,608.2	0.00	0.00	0.00
8,800.0	18.64	24.41	8,372.1	2,408.6	1,082.6	2,640.1	0.00	0.00	0.00
Drop 3° /100'									
8,885.9	18.64	24.41	8,453.6	2,433.6	1,094.0	2,667.6	0.00	0.00	0.00
8,900.0	18.22	24.41	8,466.9	2,437.7	1,095.8	2,672.0	3.00	-3.00	0.00
9,000.0	15.22	24.41	8,562.7	2,463.9	1,107.7	2,700.8	3.00	-3.00	0.00
9,100.0	12.22	24.41	8,659.8	2,485.5	1,117.5	2,724.5	3.00	-3.00	0.00
9,200.0	9.22	24.41	8,758.1	2,502.4	1,125.2	2,743.1	3.00	-3.00	0.00

Database:	KLXDirectional-AD	Local Co-ordinate Reference:	Well ELU A18 FED 14C-7-495 - Slot 14C-7
Company:	Caerus Oil & Gas	TVD Reference:	RKB=30' @ 8059.0usft (TBD)
Project:	Rio Blanco County, CO	MD Reference:	RKB=30' @ 8059.0usft (TBD)
Site:	ELU A18 495 Pad	North Reference:	True
Well:	ELU A18 FED 14C-7-495	Survey Calculation Method:	Minimum Curvature
Wellbore:	OH		
Design:	Design #5		

Planned Survey										
Measured Depth (usft)	Inclination (°)	Azimuth (°)	Vertical Depth (usft)	+N/-S (usft)	+E/-W (usft)	Vertical Section (usft)	Dogleg Rate (°/100usft)	Build Rate (°/100usft)	Turn Rate (°/100usft)	
9,300.0	6.22	24.41	8,857.1	2,514.6	1,130.7	2,756.5	3.00	-3.00	0.00	
9,400.0	3.22	24.41	8,956.8	2,522.1	1,134.1	2,764.7	3.00	-3.00	0.00	
EOD @ Vertical / Build 1.5° / 100' - Ohio Creek										
9,507.3	0.00	0.00	9,064.0	2,524.9	1,135.4	2,767.7	3.00	-3.00	0.00	
EOB @ 1.27° Inc. / 240.00° Azm										
9,592.0	1.27	240.00	9,148.7	2,524.4	1,134.6	2,767.0	1.50	1.50	0.00	
9,600.0	1.27	240.00	9,156.7	2,524.3	1,134.4	2,766.9	0.00	0.00	0.00	
9,700.0	1.27	240.00	9,256.7	2,523.2	1,132.5	2,765.1	0.00	0.00	0.00	
9,800.0	1.27	240.00	9,356.7	2,522.1	1,130.6	2,763.3	0.00	0.00	0.00	
9,900.0	1.27	240.00	9,456.7	2,521.0	1,128.6	2,761.5	0.00	0.00	0.00	
10,000.0	1.27	240.00	9,556.6	2,519.9	1,126.7	2,759.8	0.00	0.00	0.00	
10,100.0	1.27	240.00	9,656.6	2,518.8	1,124.8	2,758.0	0.00	0.00	0.00	
Williams Fork										
10,157.4	1.27	240.00	9,714.0	2,518.1	1,123.7	2,757.0	0.00	0.00	0.00	
10,200.0	1.27	240.00	9,756.6	2,517.7	1,122.9	2,756.2	0.00	0.00	0.00	
10,300.0	1.27	240.00	9,856.6	2,516.6	1,121.0	2,754.5	0.00	0.00	0.00	
10,400.0	1.27	240.00	9,956.5	2,515.4	1,119.0	2,752.7	0.00	0.00	0.00	
10,500.0	1.27	240.00	10,056.5	2,514.3	1,117.1	2,750.9	0.00	0.00	0.00	
10,600.0	1.27	240.00	10,156.5	2,513.2	1,115.2	2,749.2	0.00	0.00	0.00	
10,700.0	1.27	240.00	10,256.5	2,512.1	1,113.3	2,747.4	0.00	0.00	0.00	
10,800.0	1.27	240.00	10,356.4	2,511.0	1,111.4	2,745.6	0.00	0.00	0.00	
10,900.0	1.27	240.00	10,456.4	2,509.9	1,109.4	2,743.8	0.00	0.00	0.00	
11,000.0	1.27	240.00	10,556.4	2,508.8	1,107.5	2,742.1	0.00	0.00	0.00	
11,100.0	1.27	240.00	10,656.4	2,507.7	1,105.6	2,740.3	0.00	0.00	0.00	
11,200.0	1.27	240.00	10,756.3	2,506.6	1,103.7	2,738.5	0.00	0.00	0.00	
11,300.0	1.27	240.00	10,856.3	2,505.5	1,101.8	2,736.8	0.00	0.00	0.00	
11,400.0	1.27	240.00	10,956.3	2,504.4	1,099.8	2,735.0	0.00	0.00	0.00	
11,500.0	1.27	240.00	11,056.3	2,503.2	1,097.9	2,733.2	0.00	0.00	0.00	
11,600.0	1.27	240.00	11,156.2	2,502.1	1,096.0	2,731.4	0.00	0.00	0.00	
11,700.0	1.27	240.00	11,256.2	2,501.0	1,094.1	2,729.7	0.00	0.00	0.00	
11,800.0	1.27	240.00	11,356.2	2,499.9	1,092.1	2,727.9	0.00	0.00	0.00	
11,900.0	1.27	240.00	11,456.2	2,498.8	1,090.2	2,726.1	0.00	0.00	0.00	
12,000.0	1.27	240.00	11,556.1	2,497.7	1,088.3	2,724.4	0.00	0.00	0.00	
12,100.0	1.27	240.00	11,656.1	2,496.6	1,086.4	2,722.6	0.00	0.00	0.00	
12,200.0	1.27	240.00	11,756.1	2,495.5	1,084.5	2,720.8	0.00	0.00	0.00	
12,300.0	1.27	240.00	11,856.1	2,494.4	1,082.5	2,719.1	0.00	0.00	0.00	
12,400.0	1.27	240.00	11,956.0	2,493.3	1,080.6	2,717.3	0.00	0.00	0.00	
12,500.0	1.27	240.00	12,056.0	2,492.2	1,078.7	2,715.5	0.00	0.00	0.00	
12,600.0	1.27	240.00	12,156.0	2,491.0	1,076.8	2,713.7	0.00	0.00	0.00	
12,700.0	1.27	240.00	12,256.0	2,489.9	1,074.9	2,712.0	0.00	0.00	0.00	
12,800.0	1.27	240.00	12,355.9	2,488.8	1,072.9	2,710.2	0.00	0.00	0.00	
12,900.0	1.27	240.00	12,455.9	2,487.7	1,071.0	2,708.4	0.00	0.00	0.00	
13,000.0	1.27	240.00	12,555.9	2,486.6	1,069.1	2,706.7	0.00	0.00	0.00	
Cameo										
13,058.1	1.27	240.00	12,614.0	2,486.0	1,068.0	2,705.6	0.00	0.00	0.00	
13,100.0	1.27	240.00	12,655.9	2,485.5	1,067.2	2,704.9	0.00	0.00	0.00	
13,200.0	1.27	240.00	12,755.8	2,484.4	1,065.3	2,703.1	0.00	0.00	0.00	
13,300.0	1.27	240.00	12,855.8	2,483.3	1,063.3	2,701.3	0.00	0.00	0.00	
13,400.0	1.27	240.00	12,955.8	2,482.2	1,061.4	2,699.6	0.00	0.00	0.00	
13,500.0	1.27	240.00	13,055.8	2,481.1	1,059.5	2,697.8	0.00	0.00	0.00	
Rollins										
13,558.2	1.27	240.00	13,114.0	2,480.4	1,058.4	2,696.8	0.00	0.00	0.00	
13,600.0	1.27	240.00	13,155.7	2,480.0	1,057.6	2,696.0	0.00	0.00	0.00	
13,700.0	1.27	240.00	13,255.7	2,478.8	1,055.7	2,694.3	0.00	0.00	0.00	

Database:	KLXDirectional-AD	Local Co-ordinate Reference:	Well ELU A18 FED 14C-7-495 - Slot 14C-7
Company:	Caerus Oil & Gas	TVD Reference:	RKB=30' @ 8059.0usft (TBD)
Project:	Rio Blanco County, CO	MD Reference:	RKB=30' @ 8059.0usft (TBD)
Site:	ELU A18 495 Pad	North Reference:	True
Well:	ELU A18 FED 14C-7-495	Survey Calculation Method:	Minimum Curvature
Wellbore:	OH		
Design:	Design #5		

Planned Survey									
Measured Depth (usft)	Inclination (°)	Azimuth (°)	Vertical Depth (usft)	+N/-S (usft)	+E/-W (usft)	Vertical Section (usft)	Dogleg Rate (°/100usft)	Build Rate (°/100usft)	Turn Rate (°/100usft)
13,800.0	1.27	240.00	13,355.7	2,477.7	1,053.7	2,692.5	0.00	0.00	0.00
13,900.0	1.27	240.00	13,455.7	2,476.6	1,051.8	2,690.7	0.00	0.00	0.00
14,000.0	1.27	240.00	13,555.6	2,475.5	1,049.9	2,689.0	0.00	0.00	0.00
TD @ 14058.4' MD / 13614.0' TVD									
14,058.4	1.27	240.00	13,614.0	2,474.9	1,048.8	2,687.9	0.00	0.00	0.00

Design Targets									
Target Name - hit/miss target - Shape	Dip Angle (°)	Dip Dir. (°)	TVD (usft)	+N/-S (usft)	+E/-W (usft)	Northing (usft)	Easting (usft)	Latitude	Longitude
14C-7 - OHCR - plan hits target center - Point	0.00	0.00	9,064.0	2,524.9	1,135.4	14,435,840.27	2,455,924.55	39.716041	-108.100284
14C-7 - PBHL - plan hits target center - Ellipse (radii L100.0 W50.0 on 240.00 azi)	0.00	0.00	13,614.0	2,474.9	1,048.8	14,435,787.50	2,455,839.60	39.715904	-108.100592

Formations						
Measured Depth (usft)	Vertical Depth (usft)	Name	Lithology	Dip (°)	Dip Direction (°)	
4,223.8	4,036.0	Wasatch				
6,915.0	6,586.0	Wasatch G				
7,347.7	6,996.0	Fort Union				
9,507.3	9,064.0	Ohio Creek				
10,157.4	9,714.0	Williams Fork				
13,058.1	12,614.0	Cameo				
13,558.2	13,114.0	Rollins				

Plan Annotations				
Measured Depth (usft)	Vertical Depth (usft)	+N/-S (usft)	+E/-W (usft)	Comment
220.0	220.0	0.0	0.0	Build 3° / 100'
386.7	386.5	7.2	0.6	EOB @ 5.00° Inc. / 4.41° Azm : Build 3° / 100'
854.7	843.7	96.1	33.2	EOB @ 18.64° Inc. / 24.41° Azm
8,885.9	8,453.6	2,433.6	1,094.0	Drop 3° /100'
9,507.3	9,064.0	2,524.9	1,135.4	EOD @ Vertical / Build 1.5° / 100'
9,592.0	9,148.7	2,524.4	1,134.6	EOB @ 1.27° Inc. / 240.00° Azm
14,058.4	13,614.0	2,474.9	1,048.8	TD @ 14058.4' MD / 13614.0' TVD