

Project: Rio Blanco County, CO
 Site: ELU A18 495 Pad
 Well: ELU A18 FED 14A-7-495
 Wellbore: OH
 Design: Design #6
 Latitude: 39.709129
 Longitude: -108.104378
 Ground Level: 8029.0
 RKB=30' @ 8059.0usft (TBD)

PROJECT DETAILS: Rio Blanco County, CO

Geodetic System: Universal Transverse Mercator (US Survey Feet)
 Datum: NAD 1927 - Western US
 Ellipsoid: Clarke 1866
 Zone: Zone 12N (114 W to 108 W)
 System Datum: Mean Sea Level

REFERENCE INFORMATION

Vertical (TVD) Reference: RKB=30' @ 8059.0usft (TBD)
 Section (VS) Reference: Slot - 14A-7(0.0N, 0.0E)
 Measured Depth Reference: RKB=30' @ 8059.0usft (TBD)
 Calculation Method: Minimum Curvature

SECTION DETAILS

MD	Inc	Azi	TVD	+N/-S	+E/-W	Dleg	TFace	VSect	Annotation
0.0	0.00	0.00	0.0	0.0	0.0	0.00	0.00	0.0	
200.0	0.00	0.00	200.0	0.0	0.0	0.00	0.00	0.0	Build 3' / 100'
366.7	5.00	355.00	366.5	7.2	-0.6	3.00	355.00	6.7	EOB @ 5.00° Inc. / 355.00° Azm : Build 3' / 100'
1002.0	23.54	18.70	979.8	156.3	38.0	3.00	29.45	160.6	EOB @ 23.54° Inc. / 18.70° Azm
9040.3	23.54	18.70	8349.3	3196.9	1067.3	0.00	0.00	3369.7	Drop 3' / 100'
9824.8	0.00	0.00	9112.0	3347.4	1118.2	3.00	180.00	3528.6	EOD @ Vertical / Build 1.5" / 100'
9909.6	1.27	240.00	9196.7	3346.9	1117.4	1.50	240.00	3527.9	EOB @ 1.27° Inc. / 240.00° Azm
14375.9	1.27	240.00	13662.0	3297.4	1031.6	0.00	0.00	3455.0	TD @ 14375.9' MD / 13662.0' TVD

FORMATION TOP DETAILS

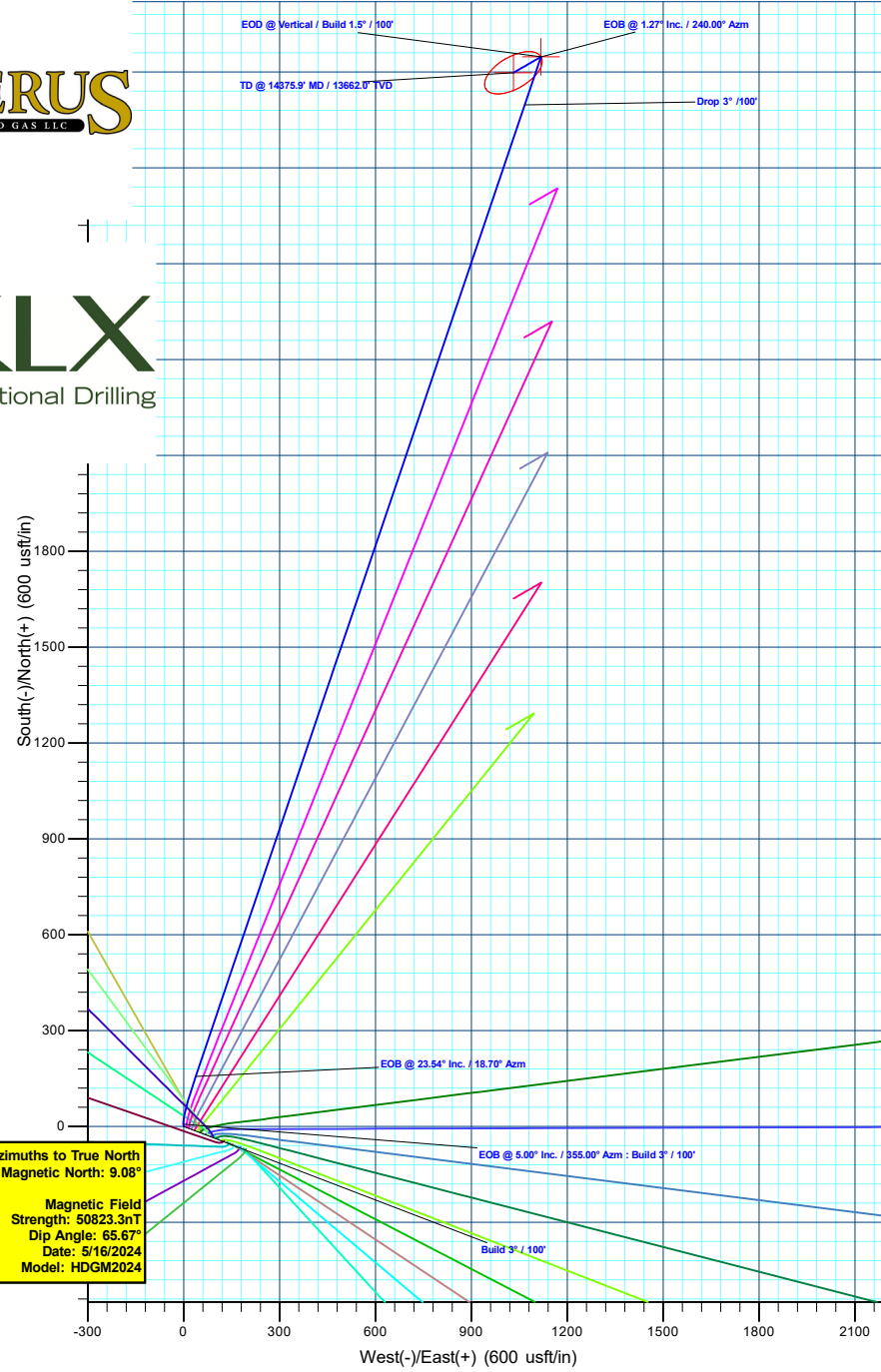
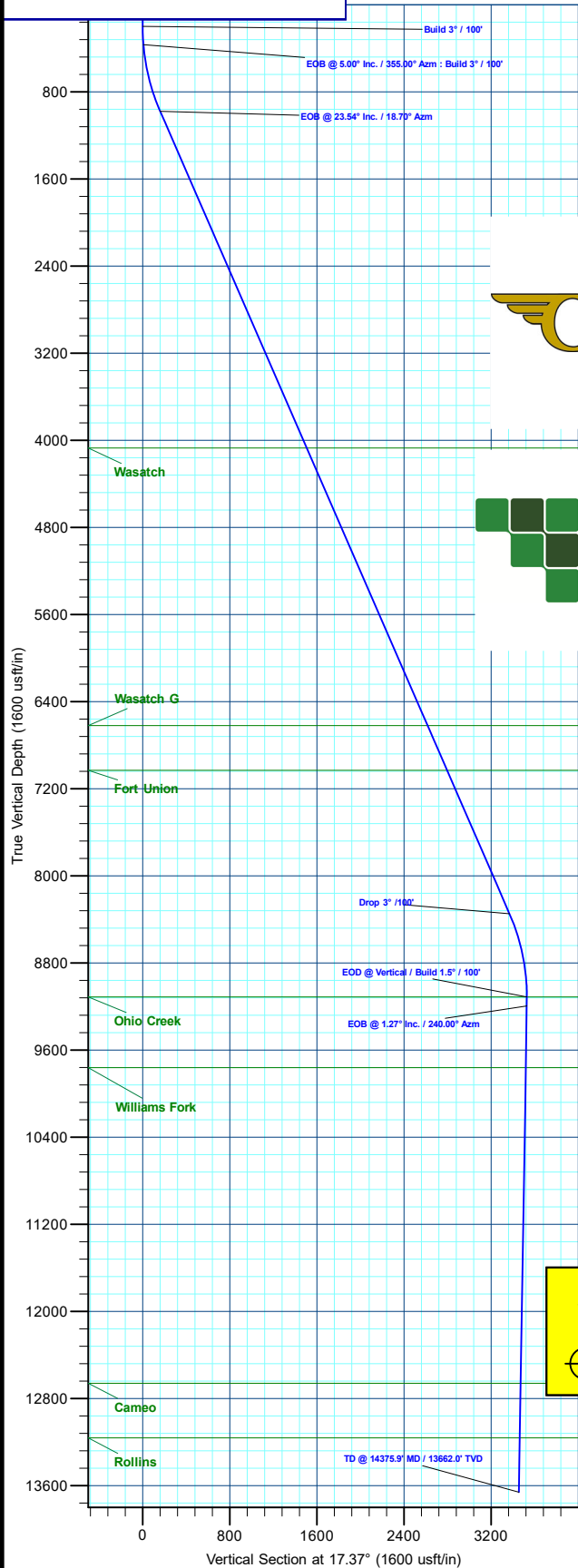
TVDPath	MDPath	Formation
4071.0	4373.7	Wasatch
6621.0	7155.1	Wasatch G
7031.0	7602.3	Fort Union
9112.0	9824.8	Ohio Creek
9762.0	10475.0	Williams Fork
12662.0	13375.7	Cameo
13162.0	13875.8	Rollins

DESIGN TARGET DETAILS

Name	TVD	+N/-S	+E/-W	Northing	Easting	Latitude	Longitude
14A-7 - OHCR	9112.0	3347.4	1118.2	14436667.37	2455863.74	39.718315	-108.100404
14A-7 - PBHL	13662.0	3297.4	1031.6	14436614.80	2455778.80	39.718178	-108.100712

WELL DETAILS: ELU A18 FED 14A-7-495

		Ground Level : 8029.0			
+N/-S	+E/-W	Northing	Easting	Latitude	Longitude
0.0	0.0	14433285.62	2454854.21	39.709129	-108.104378



T M
 Azimuths to True North
 Magnetic North: 9.08°
 Magnetic Field Strength: 50823.3nT
 Dip Angle: 65.67°
 Date: 5/16/2024
 Model: HDGM2024

Plan: Design #6 (ELU A18 FED 14A-7-495/OH)

Created By: Will Jircik Date: 21:36, June 09 2024



Caerus Oil & Gas

Rio Blanco County, CO

ELU A18 495 Pad

ELU A18 FED 14A-7-495 - Slot 14A-7

OH

Plan: Design #6

KLX Well Planning Report

09 June, 2024



Database:	KLXDirectional-AD	Local Co-ordinate Reference:	Well ELU A18 FED 14A-7-495 - Slot 14A-7
Company:	Caerus Oil & Gas	TVD Reference:	RKB=30' @ 8059.0usft (TBD)
Project:	Rio Blanco County, CO	MD Reference:	RKB=30' @ 8059.0usft (TBD)
Site:	ELU A18 495 Pad	North Reference:	True
Well:	ELU A18 FED 14A-7-495	Survey Calculation Method:	Minimum Curvature
Wellbore:	OH		
Design:	Design #6		

Project	Rio Blanco County, CO		
Map System:	Universal Transverse Mercator (US Survey Feet)	System Datum:	Mean Sea Level
Geo Datum:	NAD 1927 - Western US		
Map Zone:	Zone 12N (114 W to 108 W)		

Site	ELU A18 495 Pad				
Site Position:	Northing:	14,433,285.62 usft	Latitude:	39.709129	
From: Map	Easting:	2,454,854.21 usft	Longitude:	-108.104378	
Position Uncertainty:	0.0 usft	Slot Radius:	13-3/16 "	Grid Convergence:	1.85 °

Well	ELU A18 FED 14A-7-495 - Slot 14A-7					
Well Position	+N/-S	0.0 usft	Northing:	14,433,285.62 usft	Latitude:	39.709129
	+E/-W	0.0 usft	Easting:	2,454,854.21 usft	Longitude:	-108.104378
Position Uncertainty		0.0 usft	Wellhead Elevation:		Ground Level:	8,029.0 usft

Wellbore	OH				
Magnetics	Model Name	Sample Date	Declination (°)	Dip Angle (°)	Field Strength (nT)
	HDGM2024	5/16/2024	9.08	65.67	50,823.3000000

Design	Design #6			
Audit Notes:				
Version:	Phase:	PLAN	Tie On Depth:	0.0
Vertical Section:	Depth From (TVD) (usft)	+N/-S (usft)	+E/-W (usft)	Direction (°)
	0.0	0.0	0.0	17.37

Plan Sections										
Measured Depth (usft)	Inclination (°)	Azimuth (°)	Vertical Depth (usft)	+N/-S (usft)	+E/-W (usft)	Dogleg Rate (°/100usft)	Build Rate (°/100usft)	Turn Rate (°/100usft)	TFO (°)	Target
0.0	0.00	0.00	0.0	0.0	0.0	0.00	0.00	0.00	0.00	
200.0	0.00	0.00	200.0	0.0	0.0	0.00	0.00	0.00	0.00	
366.7	5.00	355.00	366.5	7.2	-0.6	3.00	3.00	0.00	355.00	
1,002.0	23.54	18.70	979.8	156.3	38.0	3.00	2.92	3.73	29.45	
9,040.3	23.54	18.70	8,349.3	3,196.9	1,067.3	0.00	0.00	0.00	0.00	
9,824.8	0.00	0.00	9,112.0	3,347.4	1,118.2	3.00	-3.00	0.00	180.00	14A-7 - OHCR
9,909.6	1.27	240.00	9,196.7	3,346.9	1,117.4	1.50	1.50	-141.63	240.00	
14,375.9	1.27	240.00	13,662.0	3,297.4	1,031.6	0.00	0.00	0.00	0.00	14A-7 - PBHL

Database:	KLXDirectional-AD	Local Co-ordinate Reference:	Well ELU A18 FED 14A-7-495 - Slot 14A-7
Company:	Caerus Oil & Gas	TVD Reference:	RKB=30' @ 8059.0usft (TBD)
Project:	Rio Blanco County, CO	MD Reference:	RKB=30' @ 8059.0usft (TBD)
Site:	ELU A18 495 Pad	North Reference:	True
Well:	ELU A18 FED 14A-7-495	Survey Calculation Method:	Minimum Curvature
Wellbore:	OH		
Design:	Design #6		

Planned Survey										
Measured Depth (usft)	Inclination (°)	Azimuth (°)	Vertical Depth (usft)	+N/-S (usft)	+E/-W (usft)	Vertical Section (usft)	Dogleg Rate (°/100usft)	Build Rate (°/100usft)	Turn Rate (°/100usft)	
0.0	0.00	0.00	0.0	0.0	0.0	0.0	0.00	0.00	0.00	0.00
100.0	0.00	0.00	100.0	0.0	0.0	0.0	0.00	0.00	0.00	0.00
Build 3° / 100'										
200.0	0.00	0.00	200.0	0.0	0.0	0.0	0.00	0.00	0.00	0.00
300.0	3.00	355.00	300.0	2.6	-0.2	2.4	3.00	3.00	3.00	0.00
EOB @ 5.00° Inc. / 355.00° Azm : Build 3° / 100'										
366.7	5.00	355.00	366.5	7.2	-0.6	6.7	3.00	3.00	3.00	0.00
400.0	5.89	359.79	399.6	10.4	-0.8	9.7	3.00	2.67	14.38	
500.0	8.71	8.09	498.8	23.0	0.3	22.1	3.00	2.82	8.30	
600.0	11.62	12.31	597.2	40.4	3.5	39.6	3.00	2.91	4.22	
700.0	14.56	14.85	694.6	62.4	8.9	62.2	3.00	2.95	2.54	
800.0	17.52	16.55	790.7	88.9	16.4	89.8	3.00	2.96	1.70	
900.0	20.50	17.77	885.3	120.1	26.0	122.3	3.00	2.97	1.22	
EOB @ 23.54° Inc. / 18.70° Azm										
1,002.0	23.54	18.70	979.8	156.3	38.0	160.6	3.00	2.98	0.92	
1,100.0	23.54	18.70	1,069.7	193.4	50.5	199.7	0.00	0.00	0.00	
1,200.0	23.54	18.70	1,161.3	231.3	63.3	239.6	0.00	0.00	0.00	
1,300.0	23.54	18.70	1,253.0	269.1	76.1	279.5	0.00	0.00	0.00	
1,400.0	23.54	18.70	1,344.7	306.9	89.0	319.5	0.00	0.00	0.00	
1,500.0	23.54	18.70	1,436.4	344.7	101.8	359.4	0.00	0.00	0.00	
1,600.0	23.54	18.70	1,528.1	382.6	114.6	399.3	0.00	0.00	0.00	
1,700.0	23.54	18.70	1,619.7	420.4	127.4	439.2	0.00	0.00	0.00	
1,800.0	23.54	18.70	1,711.4	458.2	140.2	479.2	0.00	0.00	0.00	
1,900.0	23.54	18.70	1,803.1	496.0	153.0	519.1	0.00	0.00	0.00	
2,000.0	23.54	18.70	1,894.8	533.9	165.8	559.0	0.00	0.00	0.00	
2,100.0	23.54	18.70	1,986.5	571.7	178.6	598.9	0.00	0.00	0.00	
2,200.0	23.54	18.70	2,078.1	609.5	191.4	638.9	0.00	0.00	0.00	
2,300.0	23.54	18.70	2,169.8	647.3	204.2	678.8	0.00	0.00	0.00	
2,400.0	23.54	18.70	2,261.5	685.2	217.0	718.7	0.00	0.00	0.00	
2,500.0	23.54	18.70	2,353.2	723.0	229.8	758.6	0.00	0.00	0.00	
2,600.0	23.54	18.70	2,444.9	760.8	242.6	798.5	0.00	0.00	0.00	
2,700.0	23.54	18.70	2,536.5	798.6	255.4	838.5	0.00	0.00	0.00	
2,800.0	23.54	18.70	2,628.2	836.5	268.2	878.4	0.00	0.00	0.00	
2,900.0	23.54	18.70	2,719.9	874.3	281.0	918.3	0.00	0.00	0.00	
3,000.0	23.54	18.70	2,811.6	912.1	293.8	958.2	0.00	0.00	0.00	
3,100.0	23.54	18.70	2,903.3	949.9	306.6	998.2	0.00	0.00	0.00	
3,200.0	23.54	18.70	2,994.9	987.8	319.4	1,038.1	0.00	0.00	0.00	
3,300.0	23.54	18.70	3,086.6	1,025.6	332.2	1,078.0	0.00	0.00	0.00	
3,400.0	23.54	18.70	3,178.3	1,063.4	345.1	1,117.9	0.00	0.00	0.00	
3,500.0	23.54	18.70	3,270.0	1,101.2	357.9	1,157.9	0.00	0.00	0.00	
3,600.0	23.54	18.70	3,361.7	1,139.1	370.7	1,197.8	0.00	0.00	0.00	
3,700.0	23.54	18.70	3,453.3	1,176.9	383.5	1,237.7	0.00	0.00	0.00	
3,800.0	23.54	18.70	3,545.0	1,214.7	396.3	1,277.6	0.00	0.00	0.00	
3,900.0	23.54	18.70	3,636.7	1,252.5	409.1	1,317.6	0.00	0.00	0.00	
4,000.0	23.54	18.70	3,728.4	1,290.4	421.9	1,357.5	0.00	0.00	0.00	
4,100.0	23.54	18.70	3,820.1	1,328.2	434.7	1,397.4	0.00	0.00	0.00	
4,200.0	23.54	18.70	3,911.7	1,366.0	447.5	1,437.3	0.00	0.00	0.00	
4,300.0	23.54	18.70	4,003.4	1,403.8	460.3	1,477.2	0.00	0.00	0.00	
Wasatch										
4,373.7	23.54	18.70	4,071.0	1,431.7	469.7	1,506.7	0.00	0.00	0.00	
4,400.0	23.54	18.70	4,095.1	1,441.7	473.1	1,517.2	0.00	0.00	0.00	
4,500.0	23.54	18.70	4,186.8	1,479.5	485.9	1,557.1	0.00	0.00	0.00	
4,600.0	23.54	18.70	4,278.5	1,517.3	498.7	1,597.0	0.00	0.00	0.00	
4,700.0	23.54	18.70	4,370.2	1,555.1	511.5	1,636.9	0.00	0.00	0.00	

Database:	KLXDirectional-AD	Local Co-ordinate Reference:	Well ELU A18 FED 14A-7-495 - Slot 14A-7
Company:	Caerus Oil & Gas	TVD Reference:	RKB=30' @ 8059.0usft (TBD)
Project:	Rio Blanco County, CO	MD Reference:	RKB=30' @ 8059.0usft (TBD)
Site:	ELU A18 495 Pad	North Reference:	True
Well:	ELU A18 FED 14A-7-495	Survey Calculation Method:	Minimum Curvature
Wellbore:	OH		
Design:	Design #6		

Planned Survey									
Measured Depth (usft)	Inclination (°)	Azimuth (°)	Vertical Depth (usft)	+N/-S (usft)	+E/-W (usft)	Vertical Section (usft)	Dogleg Rate (°/100usft)	Build Rate (°/100usft)	Turn Rate (°/100usft)
4,800.0	23.54	18.70	4,461.8	1,593.0	524.3	1,676.9	0.00	0.00	0.00
4,900.0	23.54	18.70	4,553.5	1,630.8	537.1	1,716.8	0.00	0.00	0.00
5,000.0	23.54	18.70	4,645.2	1,668.6	549.9	1,756.7	0.00	0.00	0.00
5,100.0	23.54	18.70	4,736.9	1,706.4	562.7	1,796.6	0.00	0.00	0.00
5,200.0	23.54	18.70	4,828.6	1,744.3	575.5	1,836.6	0.00	0.00	0.00
5,300.0	23.54	18.70	4,920.2	1,782.1	588.3	1,876.5	0.00	0.00	0.00
5,400.0	23.54	18.70	5,011.9	1,819.9	601.2	1,916.4	0.00	0.00	0.00
5,500.0	23.54	18.70	5,103.6	1,857.8	614.0	1,956.3	0.00	0.00	0.00
5,600.0	23.54	18.70	5,195.3	1,895.6	626.8	1,996.2	0.00	0.00	0.00
5,700.0	23.54	18.70	5,287.0	1,933.4	639.6	2,036.2	0.00	0.00	0.00
5,800.0	23.54	18.70	5,378.6	1,971.2	652.4	2,076.1	0.00	0.00	0.00
5,900.0	23.54	18.70	5,470.3	2,009.1	665.2	2,116.0	0.00	0.00	0.00
6,000.0	23.54	18.70	5,562.0	2,046.9	678.0	2,155.9	0.00	0.00	0.00
6,100.0	23.54	18.70	5,653.7	2,084.7	690.8	2,195.9	0.00	0.00	0.00
6,200.0	23.54	18.70	5,745.4	2,122.5	703.6	2,235.8	0.00	0.00	0.00
6,300.0	23.54	18.70	5,837.0	2,160.4	716.4	2,275.7	0.00	0.00	0.00
6,400.0	23.54	18.70	5,928.7	2,198.2	729.2	2,315.6	0.00	0.00	0.00
6,500.0	23.54	18.70	6,020.4	2,236.0	742.0	2,355.6	0.00	0.00	0.00
6,600.0	23.54	18.70	6,112.1	2,273.8	754.8	2,395.5	0.00	0.00	0.00
6,700.0	23.54	18.70	6,203.8	2,311.7	767.6	2,435.4	0.00	0.00	0.00
6,800.0	23.54	18.70	6,295.4	2,349.5	780.4	2,475.3	0.00	0.00	0.00
6,900.0	23.54	18.70	6,387.1	2,387.3	793.2	2,515.3	0.00	0.00	0.00
7,000.0	23.54	18.70	6,478.8	2,425.1	806.0	2,555.2	0.00	0.00	0.00
7,100.0	23.54	18.70	6,570.5	2,463.0	818.8	2,595.1	0.00	0.00	0.00
Wasatch G									
7,155.1	23.54	18.70	6,621.0	2,483.8	825.9	2,617.1	0.00	0.00	0.00
7,200.0	23.54	18.70	6,662.2	2,500.8	831.6	2,635.0	0.00	0.00	0.00
7,300.0	23.54	18.70	6,753.8	2,538.6	844.4	2,674.9	0.00	0.00	0.00
7,400.0	23.54	18.70	6,845.5	2,576.4	857.3	2,714.9	0.00	0.00	0.00
7,500.0	23.54	18.70	6,937.2	2,614.3	870.1	2,754.8	0.00	0.00	0.00
7,600.0	23.54	18.70	7,028.9	2,652.1	882.9	2,794.7	0.00	0.00	0.00
Fort Union									
7,602.3	23.54	18.70	7,031.0	2,653.0	883.2	2,795.6	0.00	0.00	0.00
7,700.0	23.54	18.70	7,120.6	2,689.9	895.7	2,834.6	0.00	0.00	0.00
7,800.0	23.54	18.70	7,212.2	2,727.7	908.5	2,874.6	0.00	0.00	0.00
7,900.0	23.54	18.70	7,303.9	2,765.6	921.3	2,914.5	0.00	0.00	0.00
8,000.0	23.54	18.70	7,395.6	2,803.4	934.1	2,954.4	0.00	0.00	0.00
8,100.0	23.54	18.70	7,487.3	2,841.2	946.9	2,994.3	0.00	0.00	0.00
8,200.0	23.54	18.70	7,579.0	2,879.0	959.7	3,034.3	0.00	0.00	0.00
8,300.0	23.54	18.70	7,670.6	2,916.9	972.5	3,074.2	0.00	0.00	0.00
8,400.0	23.54	18.70	7,762.3	2,954.7	985.3	3,114.1	0.00	0.00	0.00
8,500.0	23.54	18.70	7,854.0	2,992.5	998.1	3,154.0	0.00	0.00	0.00
8,600.0	23.54	18.70	7,945.7	3,030.3	1,010.9	3,193.9	0.00	0.00	0.00
8,700.0	23.54	18.70	8,037.4	3,068.2	1,023.7	3,233.9	0.00	0.00	0.00
8,800.0	23.54	18.70	8,129.0	3,106.0	1,036.5	3,273.8	0.00	0.00	0.00
8,900.0	23.54	18.70	8,220.7	3,143.8	1,049.3	3,313.7	0.00	0.00	0.00
9,000.0	23.54	18.70	8,312.4	3,181.6	1,062.1	3,353.6	0.00	0.00	0.00
Drop 3° /100'									
9,040.3	23.54	18.70	8,349.3	3,196.9	1,067.3	3,369.7	0.00	0.00	0.00
9,100.0	21.74	18.70	8,404.4	3,218.7	1,074.7	3,392.7	3.00	-3.00	0.00
9,200.0	18.74	18.70	8,498.3	3,251.4	1,085.8	3,427.3	3.00	-3.00	0.00
9,300.0	15.74	18.70	8,593.8	3,279.5	1,095.3	3,456.9	3.00	-3.00	0.00
9,400.0	12.74	18.70	8,690.7	3,302.8	1,103.2	3,481.5	3.00	-3.00	0.00

Database:	KLXDirectional-AD	Local Co-ordinate Reference:	Well ELU A18 FED 14A-7-495 - Slot 14A-7
Company:	Caerus Oil & Gas	TVD Reference:	RKB=30' @ 8059.0usft (TBD)
Project:	Rio Blanco County, CO	MD Reference:	RKB=30' @ 8059.0usft (TBD)
Site:	ELU A18 495 Pad	North Reference:	True
Well:	ELU A18 FED 14A-7-495	Survey Calculation Method:	Minimum Curvature
Wellbore:	OH		
Design:	Design #6		

Planned Survey									
Measured Depth (usft)	Inclination (°)	Azimuth (°)	Vertical Depth (usft)	+N/-S (usft)	+E/-W (usft)	Vertical Section (usft)	Dogleg Rate (°/100usft)	Build Rate (°/100usft)	Turn Rate (°/100usft)
9,500.0	9.74	18.70	8,788.7	3,321.3	1,109.4	3,501.0	3.00	-3.00	0.00
9,600.0	6.74	18.70	8,887.7	3,334.9	1,114.0	3,515.4	3.00	-3.00	0.00
9,700.0	3.74	18.70	8,987.3	3,343.5	1,116.9	3,524.5	3.00	-3.00	0.00
9,800.0	0.74	18.70	9,087.2	3,347.2	1,118.2	3,528.4	3.00	-3.00	0.00
EOD @ Vertical / Build 1.5° / 100' - Ohio Creek									
9,824.8	0.00	0.00	9,112.0	3,347.4	1,118.2	3,528.6	3.00	-3.00	0.00
EOB @ 1.27° Inc. / 240.00° Azm									
9,909.6	1.27	240.00	9,196.7	3,346.9	1,117.4	3,527.9	1.50	1.50	0.00
10,000.0	1.27	240.00	9,287.1	3,345.9	1,115.7	3,526.4	0.00	0.00	0.00
10,100.0	1.27	240.00	9,387.1	3,344.8	1,113.8	3,524.8	0.00	0.00	0.00
10,200.0	1.27	240.00	9,487.1	3,343.7	1,111.8	3,523.1	0.00	0.00	0.00
10,300.0	1.27	240.00	9,587.1	3,342.6	1,109.9	3,521.5	0.00	0.00	0.00
10,400.0	1.27	240.00	9,687.0	3,341.5	1,108.0	3,519.9	0.00	0.00	0.00
Williams Fork									
10,475.0	1.27	240.00	9,762.0	3,340.6	1,106.6	3,518.7	0.00	0.00	0.00
10,500.0	1.27	240.00	9,787.0	3,340.4	1,106.1	3,518.2	0.00	0.00	0.00
10,600.0	1.27	240.00	9,887.0	3,339.2	1,104.2	3,516.6	0.00	0.00	0.00
10,700.0	1.27	240.00	9,987.0	3,338.1	1,102.2	3,515.0	0.00	0.00	0.00
10,800.0	1.27	240.00	10,086.9	3,337.0	1,100.3	3,513.3	0.00	0.00	0.00
10,900.0	1.27	240.00	10,186.9	3,335.9	1,098.4	3,511.7	0.00	0.00	0.00
11,000.0	1.27	240.00	10,286.9	3,334.8	1,096.5	3,510.1	0.00	0.00	0.00
11,100.0	1.27	240.00	10,386.9	3,333.7	1,094.6	3,508.5	0.00	0.00	0.00
11,200.0	1.27	240.00	10,486.8	3,332.6	1,092.6	3,506.8	0.00	0.00	0.00
11,300.0	1.27	240.00	10,586.8	3,331.5	1,090.7	3,505.2	0.00	0.00	0.00
11,400.0	1.27	240.00	10,686.8	3,330.4	1,088.8	3,503.6	0.00	0.00	0.00
11,500.0	1.27	240.00	10,786.8	3,329.3	1,086.9	3,501.9	0.00	0.00	0.00
11,600.0	1.27	240.00	10,886.7	3,328.2	1,085.0	3,500.3	0.00	0.00	0.00
11,700.0	1.27	240.00	10,986.7	3,327.1	1,083.0	3,498.7	0.00	0.00	0.00
11,800.0	1.27	240.00	11,086.7	3,325.9	1,081.1	3,497.0	0.00	0.00	0.00
11,900.0	1.27	240.00	11,186.7	3,324.8	1,079.2	3,495.4	0.00	0.00	0.00
12,000.0	1.27	240.00	11,286.6	3,323.7	1,077.3	3,493.8	0.00	0.00	0.00
12,100.0	1.27	240.00	11,386.6	3,322.6	1,075.4	3,492.1	0.00	0.00	0.00
12,200.0	1.27	240.00	11,486.6	3,321.5	1,073.4	3,490.5	0.00	0.00	0.00
12,300.0	1.27	240.00	11,586.6	3,320.4	1,071.5	3,488.9	0.00	0.00	0.00
12,400.0	1.27	240.00	11,686.6	3,319.3	1,069.6	3,487.2	0.00	0.00	0.00
12,500.0	1.27	240.00	11,786.5	3,318.2	1,067.7	3,485.6	0.00	0.00	0.00
12,600.0	1.27	240.00	11,886.5	3,317.1	1,065.7	3,484.0	0.00	0.00	0.00
12,700.0	1.27	240.00	11,986.5	3,316.0	1,063.8	3,482.3	0.00	0.00	0.00
12,800.0	1.27	240.00	12,086.5	3,314.9	1,061.9	3,480.7	0.00	0.00	0.00
12,900.0	1.27	240.00	12,186.4	3,313.7	1,060.0	3,479.1	0.00	0.00	0.00
13,000.0	1.27	240.00	12,286.4	3,312.6	1,058.1	3,477.4	0.00	0.00	0.00
13,100.0	1.27	240.00	12,386.4	3,311.5	1,056.1	3,475.8	0.00	0.00	0.00
13,200.0	1.27	240.00	12,486.4	3,310.4	1,054.2	3,474.2	0.00	0.00	0.00
13,300.0	1.27	240.00	12,586.3	3,309.3	1,052.3	3,472.6	0.00	0.00	0.00
Cameo									
13,375.7	1.27	240.00	12,662.0	3,308.5	1,050.8	3,471.3	0.00	0.00	0.00
13,400.0	1.27	240.00	12,686.3	3,308.2	1,050.4	3,470.9	0.00	0.00	0.00
13,500.0	1.27	240.00	12,786.3	3,307.1	1,048.5	3,469.3	0.00	0.00	0.00
13,600.0	1.27	240.00	12,886.3	3,306.0	1,046.5	3,467.7	0.00	0.00	0.00
13,700.0	1.27	240.00	12,986.2	3,304.9	1,044.6	3,466.0	0.00	0.00	0.00
13,800.0	1.27	240.00	13,086.2	3,303.8	1,042.7	3,464.4	0.00	0.00	0.00
Rollins									
13,875.8	1.27	240.00	13,162.0	3,302.9	1,041.2	3,463.2	0.00	0.00	0.00
13,900.0	1.27	240.00	13,186.2	3,302.7	1,040.8	3,462.8	0.00	0.00	0.00

Database:	KLXDirectional-AD	Local Co-ordinate Reference:	Well ELU A18 FED 14A-7-495 - Slot 14A-7
Company:	Caerus Oil & Gas	TVD Reference:	RKB=30' @ 8059.0usft (TBD)
Project:	Rio Blanco County, CO	MD Reference:	RKB=30' @ 8059.0usft (TBD)
Site:	ELU A18 495 Pad	North Reference:	True
Well:	ELU A18 FED 14A-7-495	Survey Calculation Method:	Minimum Curvature
Wellbore:	OH		
Design:	Design #6		

Planned Survey										
Measured Depth (usft)	Inclination (°)	Azimuth (°)	Vertical Depth (usft)	+N/-S (usft)	+E/-W (usft)	Vertical Section (usft)	Dogleg Rate (°/100usft)	Build Rate (°/100usft)	Turn Rate (°/100usft)	
14,000.0	1.27	240.00	13,286.2	3,301.5	1,038.9	3,461.1	0.00	0.00	0.00	
14,100.0	1.27	240.00	13,386.1	3,300.4	1,036.9	3,459.5	0.00	0.00	0.00	
14,200.0	1.27	240.00	13,486.1	3,299.3	1,035.0	3,457.9	0.00	0.00	0.00	
14,300.0	1.27	240.00	13,586.1	3,298.2	1,033.1	3,456.2	0.00	0.00	0.00	
TD @ 14375.9' MD / 13662.0' TVD										
14,375.9	1.27	240.00	13,662.0	3,297.4	1,031.6	3,455.0	0.00	0.00	0.00	

Design Targets										
Target Name	Dip Angle (°)	Dip Dir. (°)	TVD (usft)	+N/-S (usft)	+E/-W (usft)	Northing (usft)	Easting (usft)	Latitude	Longitude	
14A-7 - OHCR - hit/miss target - Shape - Point	0.00	0.00	9,112.0	3,347.4	1,118.2	14,436,667.37	2,455,863.75	39.718315	-108.100405	
14A-7 - PBHL - plan hits target center - Ellipse (radii L100.0 W50.0 on 240.00 azi)	0.00	0.00	13,662.0	3,297.4	1,031.6	14,436,614.60	2,455,778.80	39.718178	-108.100713	

Formations						
Measured Depth (usft)	Vertical Depth (usft)	Name	Lithology	Dip (°)	Dip Direction (°)	
4,373.7	4,071.0	Wasatch				
7,155.1	6,621.0	Wasatch G				
7,602.3	7,031.0	Fort Union				
9,824.8	9,112.0	Ohio Creek				
10,475.0	9,762.0	Williams Fork				
13,375.7	12,662.0	Cameo				
13,875.8	13,162.0	Rollins				

Plan Annotations					
Measured Depth (usft)	Vertical Depth (usft)	+N/-S (usft)	+E/-W (usft)	Comment	
200.0	200.0	0.0	0.0	Build 3° / 100'	
366.7	366.5	7.2	-0.6	EOB @ 5.00° Inc. / 355.00° Azm : Build 3° / 100'	
1,002.0	979.8	156.3	38.0	EOB @ 23.54° Inc. / 18.70° Azm	
9,040.3	8,349.3	3,196.9	1,067.3	Drop 3° / 100'	
9,824.8	9,112.0	3,347.4	1,118.2	EOD @ Vertical / Build 1.5° / 100'	
9,909.6	9,196.7	3,346.9	1,117.4	EOB @ 1.27° Inc. / 240.00° Azm	
14,375.9	13,662.0	3,297.4	1,031.6	TD @ 14375.9' MD / 13662.0' TVD	