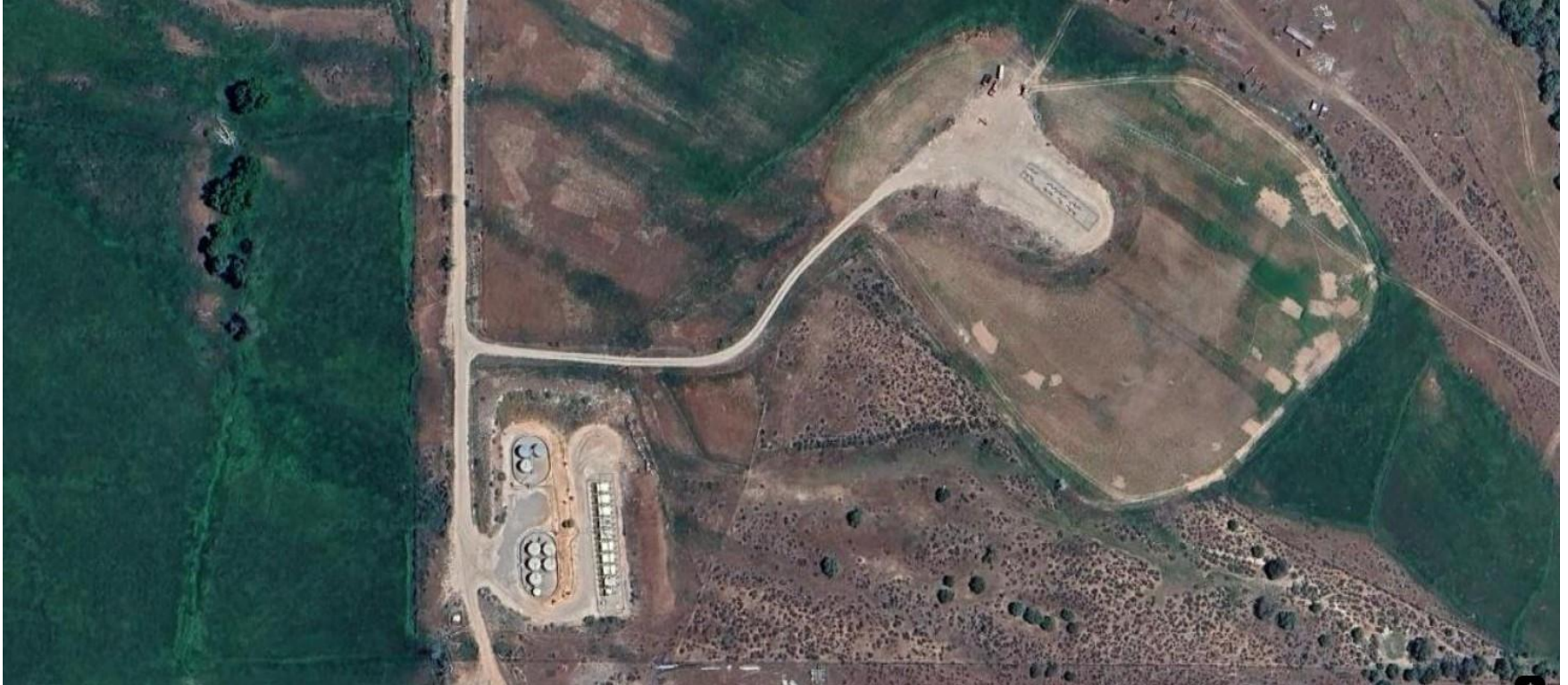


Storm Water Management and Erosion control

Location Name: TEP ROCKY MOUNTAIN LLC JOHNSON RWF 434-30 Pad

Location ID: 335509



Location Overview: Location is within High Priority/Density/Black Bear Habitat areas/Bald Eagle Roost site & in close proximity to NSO Habitat area & Bald Eagle Nest site. Location is approximately 464 yards from Cache Creek.

Section/Township/Range: 30 6S94W



COLORADO
Energy & Carbon Management
Commission
Department of Natural Resources

Storm water Management and Erosion control
Location Name: TEP ROCKY MOUNTAIN LLC JOHNSON RWF 434-30 Pad
Location ID: 335509



North West corner of location.



North East corner of location.



South West corner of location.



South East corner of location.