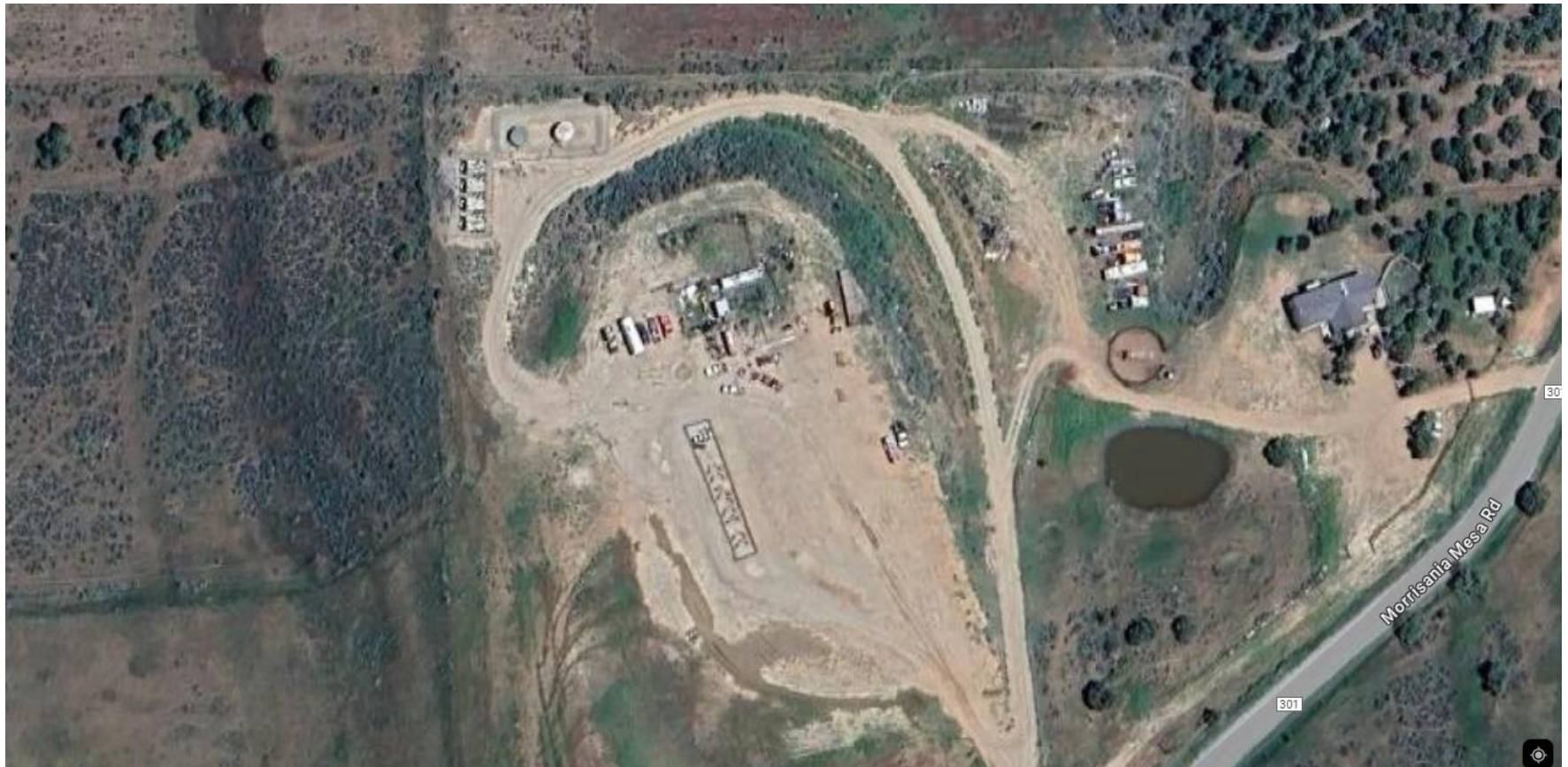


Storm Water Management and Erosion control
Location Name: TEP ROCKY MOUNTAIN LLC STUBBS RWF 11-5 Pad
Location ID: 334713



**Location Overview: Location is within High
Priority/Density/Black Bear Habitat areas.**

Section/Township/Range: 5 7S94W



Storm water Management and Erosion control
Location Name: TEP ROCKY MOUNTAIN LLC STUBBS RWF 11-5 Pad
Location ID: 334713



North West corner of location.



North East corner of location.



South West corner of location.



South East corner of location.

Storm water Management and Erosion control
Location Name: TEP ROCKY MOUNTAIN LLC STUBBS RWF 11-5 Pad
Location ID: 334713



Photo # 306 Chemical drum with no BMP's



Photo # 307 Chemical drum with no BMP's

Storm water Management and Erosion control
Location Name: TEP ROCKY MOUNTAIN LLC STUBBS RWF 11-5 Pad
Location ID: 334713



Photo # 308 Improperly stored battery & chemicals



Photo # 309 Improperly stored batteries

Storm water Management and Erosion control
Location Name: TEP ROCKY MOUNTAIN LLC STUBBS RWF 11-5 Pad
Location ID: 334713



Photo # 310 Improperly stored batteries



Photo # 311 Improperly stored chemical bucket

Storm water Management and Erosion control
Location Name: TEP ROCKY MOUNTAIN LLC STUBBS RWF 11-5 Pad
Location ID: 334713



Photo # 312 Vehicle tracks in the interim area



Photo # 313 Vehicle tracks in the interim area

Storm water Management and Erosion control
Location Name: TEP ROCKY MOUNTAIN LLC STUBBS RWF 11-5 Pad
Location ID: 334713



Photo # 314 Vehicle tracks in the interim area