

## Attachment B



<b>SITE NAME:</b> PDC Merritt Combined Wellheads							<b>DATE:</b> 2/26/2024	<b>REM. PROJECT #:</b> 33447	<b>WEATHER:</b> 60s windy		
<b>SITE DIRECTIONS:</b> CR 31 & 72, W 0.3 miles, S 0.1 M, then W into site							<b>CLIENT:</b> PDC				
<b>LEGALS AND LAT/LONG:</b> 40.509320, -104.781140							<b>TASMAN PERSONNEL:</b> JH				
<b>SOIL TYPES:</b> Well Graded Sand - SW							<b>SURFACE GRADIENT:</b> South				
<b>SOIL SAMPLING</b>							<b>FACILITY INFRASTRUCTURE</b>				
Date/Time	Soil Sample ID	PID (ppm)	Visual	Olfactory	Photo?	Grab or Lab Sample?	EQUIPMENT		Quantity		
							Above Ground Storage Tank (AST)				
2/27/2024 14:35	WH01-B @ 6'	0.7	No Staining	No Odor	Yes	Lab	Buried or Partially Buried Vessel				
2/27/2024 14:40	WH01-N @ 4'	0.3	No Staining	No Odor	Yes	On-Hold	Separator				
2/27/2024 14:45	WH01-W @ 4'	0.4	HC Staining	No Odor	Yes	On-Hold	Emission Control Device (ECD)				
2/27/2024 14:50	WH01-S @ 4'	0.6	No Staining	No Odor	Yes	Lab	Dump Line				
2/27/2024 14:55	WH01-E @ 4'	0.1	No Staining	No Odor	Yes	On-Hold	Wellhead				
2/27/2024 13:35	WH02 @ 6'	9.2	HC Staining	Slight HC Odor	Yes	Lab	Flowline				
2/27/2024 13:40	FLR02 @ 4'	0.4	HC Staining	Slight HC Odor	Yes	Lab	Other:				
2/27/2024 13:45	COMP01-FL02 @ 4'	0.1	HC Staining	Slight HC Odor	Yes	Lab	Soil Loads Removed				
2/28/2024 09:54	WHS01-N @ 0-6"	0.3	No Staining	No Odor	Yes	Grab	<b>IMPACTED SOIL IDENTIFIED?</b>				
2/28/2024 09:54	WHS01-W @ 0-6"	0.3	No Staining	No Odor	Yes	Grab	<b>ESTIMATED VOLUME OF IMPACTS:</b>				
2/28/2024 09:54	WHS01-S @ 0-6"	2.2	No Staining	No Odor	Yes	Grab	Date		Number		CY
2/28/2024 09:55	WHS02-N @ 0-6"	0.2	No Staining	No Odor	Yes	Grab	2/27/2024		1		9
2/28/2024 09:53	WHS02-S @ 0-6"	0.3	No Staining	No Odor	Yes	Grab	2/28/2024		1		9
2/28/2024 09:53	WHS02-E @ 0-6"	0.1	No Staining	No Odor	Yes	Grab					
2/28/2024 09:20	WC01 @ 4'	143.4	HC Staining	HC Odor	Yes	Grab					
2/28/2024 10:30	WH03-B @ 6'	3.1	HC Staining	No Odor	Yes	Lab	Total Removed		2		18
2/28/2024 10:35	WH03-N @ 4'	17.0	HC Staining	No Odor	Yes	On-Hold	<b>Disposal Facility:</b> North Weld				
2/28/2024 10:40	WH03-W @ 4'	41.7	HC Staining	No Odor	Yes	Lab	Groundwater Recovery				
2/28/2024 10:45	WH03-S @ 4'	4.5	No Staining	No Odor	Yes	On-Hold	<b>DATE GW ENCOUNTERED:</b>		<b>DEPTH:</b>		
2/28/2024 10:50	WH03-E @ 4'	23.1	HC Staining	No Odor	Yes	On-Hold	<b>GROUNDWATER IN CONTACT WITH IMPACTED SOIL?</b>				
							<b>LNAPL OR SHEEN OBSERVED ON GW?</b>				
<b>GROUNDWATER SAMPLING</b>							Date		BBLs		
Date/Time	Groundwater Sample ID	Depth Collected	Turbid?	Sheen?	Odor?	Photo?					
							Total Removed		0		
							<b>Disposal Facility:</b>				



### Photographic Log

					
Material:	Volume:	Contents:	Material:	Volume:	Contents:
Notes/Conditions: WH01-B @ 6'			Notes/Conditions: WH01-N @ 4'		

Photographic Log



<b>Equipment ID:</b>		<b>Equipment Type:</b>		<b>Equipment ID:</b>		<b>Equipment Type:</b>	
<b>Material:</b>	<b>Volume:</b>	<b>Contents:</b>		<b>Material:</b>	<b>Volume:</b>	<b>Contents:</b>	
<b>Notes/Conditions:</b> WH01-W @ 4'				<b>Notes/Conditions:</b> WH01-S @ 4'			

**Photographic Log**


<b>Equipment ID:</b>		<b>Equipment Type:</b>	
<b>Material:</b>	<b>Volume:</b>	<b>Contents:</b>	

**Notes/Conditions:** WH01-E @ 4'

<b>Equipment ID:</b>		<b>Equipment Type:</b>	
<b>Material:</b>	<b>Volume:</b>	<b>Contents:</b>	

**Notes/Conditions:** WH02 @ 6'

Photographic Log



<b>Equipment ID:</b>		<b>Equipment Type:</b>	
<b>Material:</b>	<b>Volume:</b>	<b>Contents:</b>	

**Notes/Conditions:** FLR02 @ 4'

<b>Equipment ID:</b>		<b>Equipment Type:</b>	
<b>Material:</b>	<b>Volume:</b>	<b>Contents:</b>	

**Notes/Conditions:** COMP01-FL02 @ 4'

Photographic Log



<b>Equipment ID:</b>		<b>Equipment Type:</b>	
<b>Material:</b>	<b>Volume:</b>	<b>Contents:</b>	

**Notes/Conditions:** WHS01-N

<b>Equipment ID:</b>		<b>Equipment Type:</b>	
<b>Material:</b>	<b>Volume:</b>	<b>Contents:</b>	

**Notes/Conditions:** WHS01-W

Photographic Log



**Equipment ID:**                      **Equipment Type:**

**Material:**                      **Volume:**                      **Contents:**

**Notes/Conditions:** WHS01-S

**Equipment ID:**                      **Equipment Type:**

**Material:**                      **Volume:**                      **Contents:**

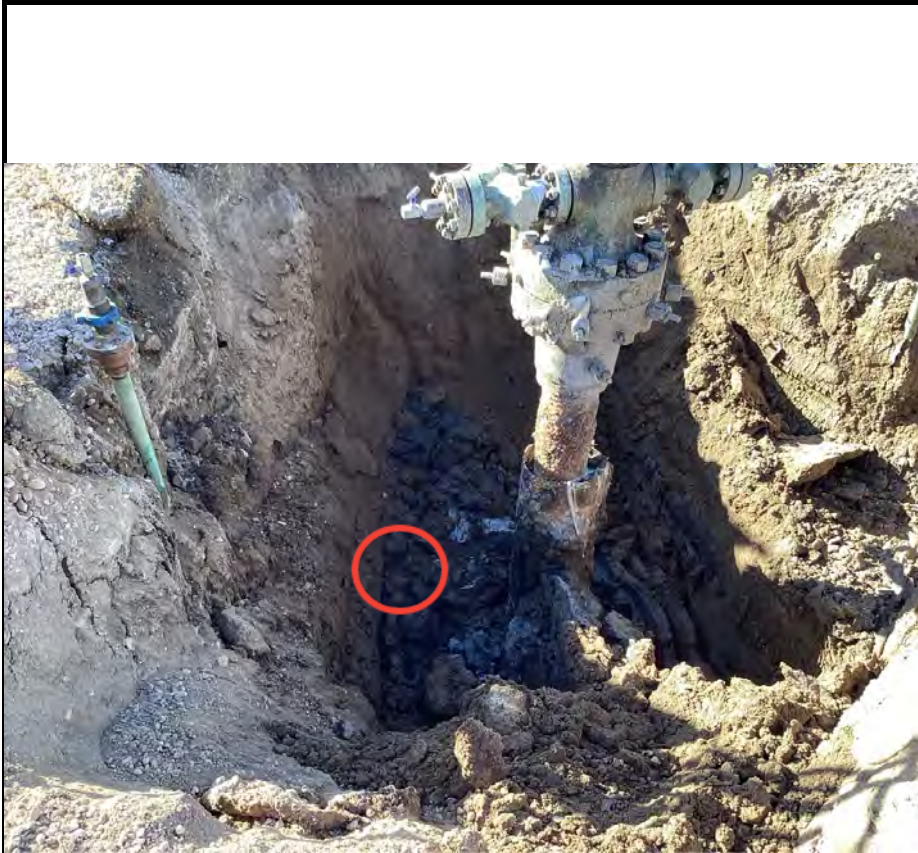
**Notes/Conditions:** WHS02-N

Photographic Log



<b>Equipment ID:</b>		<b>Equipment Type:</b>		<b>Equipment ID:</b>		<b>Equipment Type:</b>	
<b>Material:</b>	<b>Volume:</b>	<b>Contents:</b>		<b>Material:</b>	<b>Volume:</b>	<b>Contents:</b>	
<b>Notes/Conditions:</b> WHS02-E				<b>Notes/Conditions:</b> WHS02-S			

### Photographic Log



<b>Equipment ID:</b>		<b>Equipment Type:</b>	
<b>Material:</b>	<b>Volume:</b>	<b>Contents:</b>	
<b>Notes/Conditions:</b> WC01 @ 4'			

<b>Equipment ID:</b>		<b>Equipment Type:</b>	
<b>Material:</b>	<b>Volume:</b>	<b>Contents:</b>	
<b>Notes/Conditions:</b> WHS03-B @ 6'			

**Photographic Log**


<b>Equipment ID:</b>		<b>Equipment Type:</b>	
<b>Material:</b>	<b>Volume:</b>	<b>Contents:</b>	

**Notes/Conditions:** WHS03-N @ 4'

<b>Equipment ID:</b>		<b>Equipment Type:</b>	
<b>Material:</b>	<b>Volume:</b>	<b>Contents:</b>	

**Notes/Conditions:** WHS03-W

### Photographic Log



<b>Equipment ID:</b>		<b>Equipment Type:</b>	
<b>Material:</b>	<b>Volume:</b>	<b>Contents:</b>	

**Notes/Conditions:** WHS03-S @ 4'

<b>Equipment ID:</b>		<b>Equipment Type:</b>	
<b>Material:</b>	<b>Volume:</b>	<b>Contents:</b>	

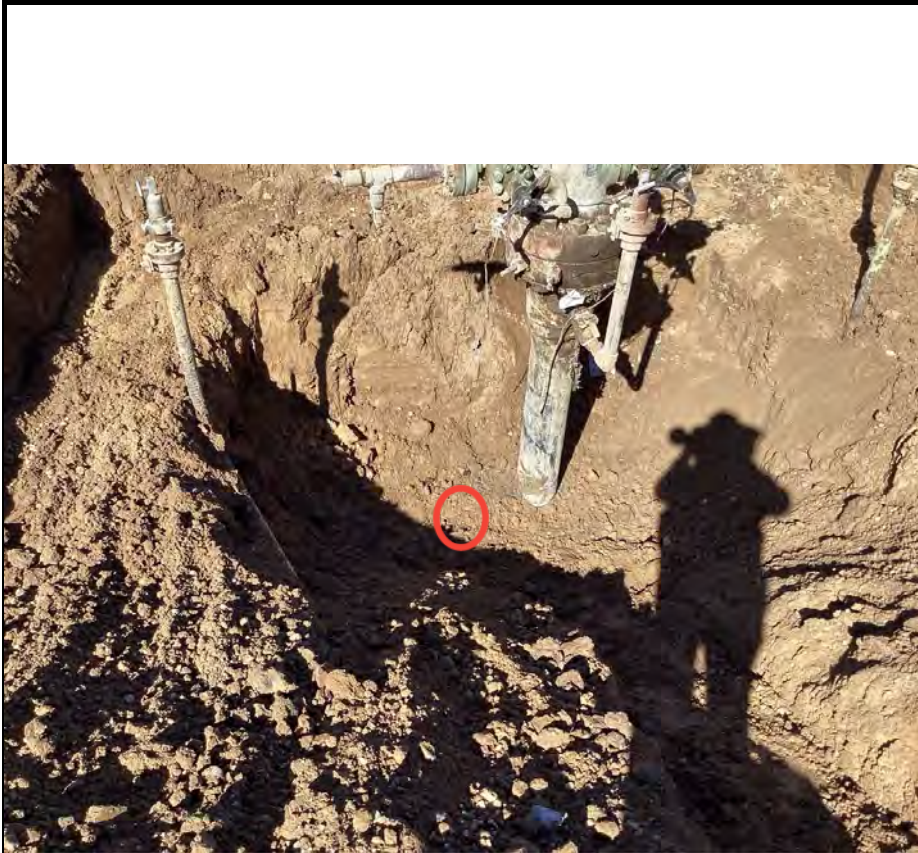
**Notes/Conditions:** WHS03-E @ 4'



<b>SITE NAME:</b> PDC Merritt Combined Wellhead							<b>DATE:</b> 2/28/2024	<b>REM. PROJECT #:</b> 33447	<b>WEATHER:</b> 60s		
<b>SITE DIRECTIONS:</b> CR 31 & 72, W 0.3 miles, S 0.1 M, then W into site							<b>CLIENT:</b> PDC				
<b>LEGALS AND LAT/LONG:</b> 40.509320, -104.781140							<b>TASMAN PERSONNEL:</b> JH				
<b>SOIL TYPES:</b> Well Graded Sand - SW							<b>SURFACE GRADIENT:</b> South				
SOIL SAMPLING							FACILITY INFRASTRUCTURE				
Date/Time	Soil Sample ID	PID (ppm)	Visual	Olfactory	Photo?	Grab or Lab Sample?	EQUIPMENT		Quantity		
							Above Ground Storage Tank (AST)				
2/28/2024 14:00	WH04 @ 8'	0.6	No Staining	No Odor	Yes	Lab	Buried or Partially Buried Vessel				
2/28/2024 14:05	FLR04 @ 4'	0.5	No Staining	No Odor	Yes	Lab	Separator				
2/28/2024 14:10	COMP01-FL04 @ 4'	0.3	No Staining	No Odor	Yes	Lab	Emission Control Device (ECD)				
2/28/2024 13:30	WHS04-N @ 0-6"	0.0	No Staining	No Odor	Yes	Grab	Dump Line				
2/28/2024 13:35	WHS04-W @ 0-6"	0.1	No Staining	No Odor	Yes	Grab	Wellhead				
2/28/2024 13:40	WHS04-S @ 0-6"	0.1	No Staining	No Odor	Yes	Grab	Flowline				
2/29/2024 09:20	WH06 @ 8'	0.9	Organic Content	Organic Odor	Yes	Lab	Other:				
2/29/2024 09:25	FLR06 @ 4'	0.8	Organic Content	Organic Odor	Yes	Lab	Soil Loads Removed				
2/29/2024 09:30	COMP01-FL06 @ 4'	1.0	Organic Content	Organic Odor	Yes	Lab	IMPACTED SOIL IDENTIFIED?				
2/29/2024 09:35	WHS06-N @ 0-6"	0.7	No Staining	No Odor	Yes	Grab	ESTIMATED VOLUME OF IMPACTS:				
2/29/2024 09:40	WHS06-S @ 0-6"	1.0	No Staining	No Odor	Yes	Grab	Date	Number	CY		
2/29/2024 10:35	WH07 @ 8'	1.0	Organic Content	Organic Odor	Yes	Lab					
2/29/2024 10:40	FLR07 @ 4'	0.7	No Staining	No Odor	Yes	Lab					
2/29/2024 10:45	COMP01-FL07 @ 4'	1.1	No Staining	No Odor	Yes	Lab					
2/29/2024 12:05	WHS07-N @ 0-6"	0.4	No Staining	No Odor	Yes	Grab					
2/29/2024 12:10	WHS07-S @ 0-6"	0.1	No Staining	No Odor	Yes	Grab	Total Removed		0	0	
2/29/2024 14:30	WH08-B @ 9'	1.0	Organic Content	Organic Odor	Yes	Lab	Disposal Facility:				
2/29/2024 14:35	WH08-N @ 4'	1.0	No Staining	No Odor	Yes	On-Hold	Groundwater Recovery				
2/29/2024 14:40	WH08-W @ 4'	1.5	No Staining	No Odor	Yes	On-Hold	DATE GW ENCOUNTERED:			DEPTH:	
2/29/2024 13:40	WHS08-N @ 0-6"	0.0	No Staining	No Odor	Yes	Grab	GROUNDWATER IN CONTACT WITH IMPACTED SOIL?				
2/29/2024 13:45	WHS08-S @ 0-6"	0.4	No Staining	No Odor	Yes	Grab					
2/29/2024 14:45	WH08-S @ 4'	1.6	No Staining	No Odor	Yes	Lab	LNAPL OR SHEEN OBSERVED ON GW?				
GROUNDWATER SAMPLING							Date		BBLs		
Date/Time	Groundwater Sample ID	Depth Collected	Turbid?	Sheen?	Odor?	Photo?					
							Total Removed		0		
							Disposal Facility:				



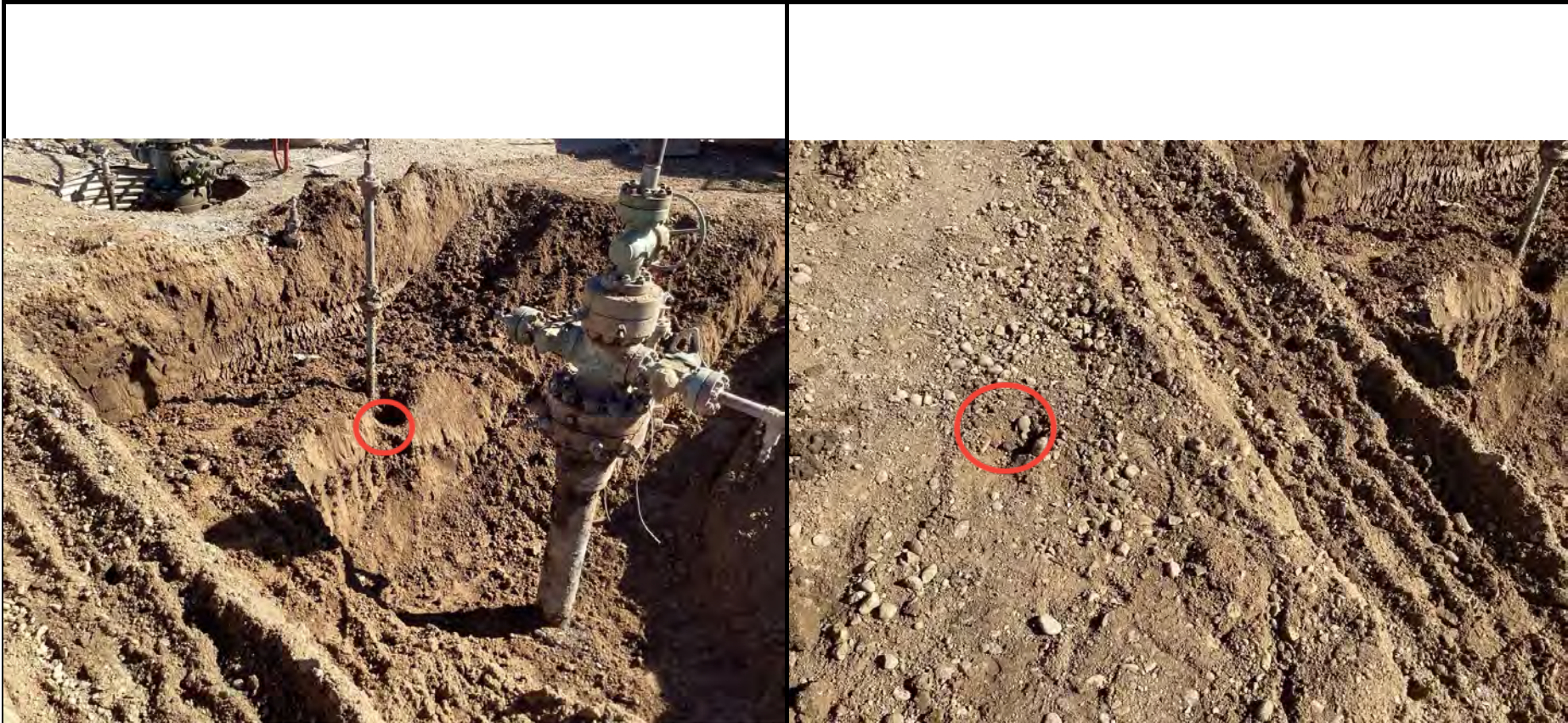
Photographic Log



<b>Equipment ID:</b>		<b>Equipment Type:</b>	
<b>Material:</b>	<b>Volume:</b>	<b>Contents:</b>	
<b>Notes/Conditions:</b> WH04 @ 8'			

<b>Equipment ID:</b>		<b>Equipment Type:</b>	
<b>Material:</b>	<b>Volume:</b>	<b>Contents:</b>	
<b>Notes/Conditions:</b> FLR04 @ 4'			

### Photographic Log



<b>Equipment ID:</b>		<b>Equipment Type:</b>	
<b>Material:</b>	<b>Volume:</b>	<b>Contents:</b>	
<b>Notes/Conditions:</b> COMP01-FL04 @ 4'			

<b>Equipment ID:</b>		<b>Equipment Type:</b>	
<b>Material:</b>	<b>Volume:</b>	<b>Contents:</b>	
<b>Notes/Conditions:</b> WHS04-N @ 0-6"			

Photographic Log



<b>Equipment ID:</b>	<b>Equipment Type:</b>
<b>Material:</b>	<b>Volume:</b>
<b>Contents:</b>	

**Notes/Conditions:** WHS04-W @ 0-6"

<b>Equipment ID:</b>	<b>Equipment Type:</b>
<b>Material:</b>	<b>Volume:</b>
<b>Contents:</b>	

**Notes/Conditions:** WHS04-S @ 0-6"

### Photographic Log



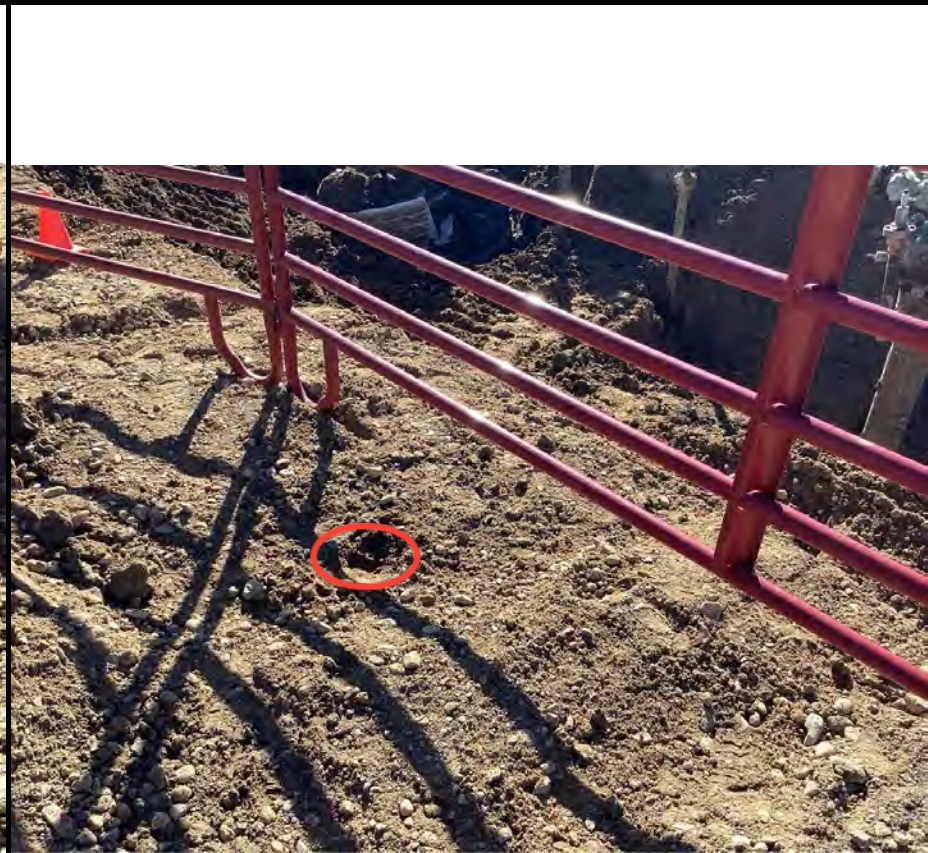
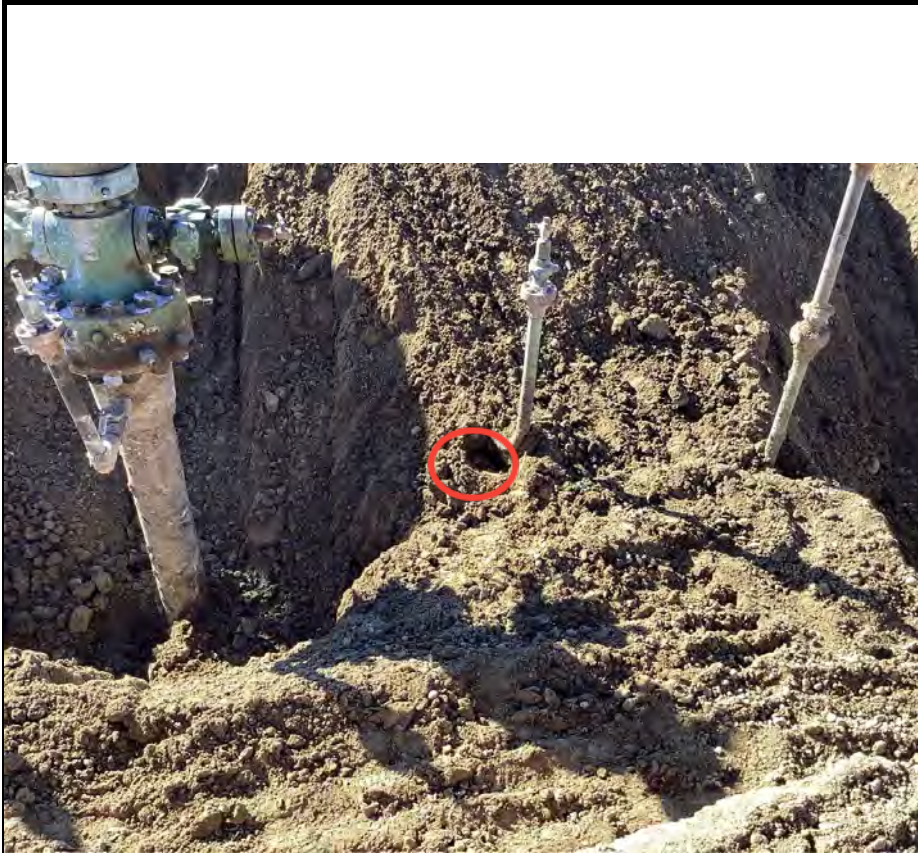
<b>Equipment ID:</b>		<b>Equipment Type:</b>	
<b>Material:</b>	<b>Volume:</b>	<b>Contents:</b>	

**Notes/Conditions:** WH06 @ 8'

<b>Equipment ID:</b>		<b>Equipment Type:</b>	
<b>Material:</b>	<b>Volume:</b>	<b>Contents:</b>	

**Notes/Conditions:** COMP01-FL06 @ 4'

Photographic Log



<b>Equipment ID:</b>		<b>Equipment Type:</b>	
<b>Material:</b>	<b>Volume:</b>	<b>Contents:</b>	
<b>Notes/Conditions:</b> FLR06 @ 4'			

<b>Equipment ID:</b>		<b>Equipment Type:</b>	
<b>Material:</b>	<b>Volume:</b>	<b>Contents:</b>	
<b>Notes/Conditions:</b> WHS06-N @ 0-6"			

Photographic Log



<b>Equipment ID:</b>		<b>Equipment Type:</b>	
<b>Material:</b>	<b>Volume:</b>	<b>Contents:</b>	

**Notes/Conditions:** WHS06-S @ 0-6"

<b>Equipment ID:</b>		<b>Equipment Type:</b>	
<b>Material:</b>	<b>Volume:</b>	<b>Contents:</b>	

**Notes/Conditions:** WH07 @ 8'

Photographic Log





<b>Equipment ID:</b>	<b>Equipment Type:</b>
<b>Material:</b>	<b>Volume:</b>
<b>Contents:</b>	

**Notes/Conditions:** FLR07 @ 4'

<b>Equipment ID:</b>	<b>Equipment Type:</b>
<b>Material:</b>	<b>Volume:</b>
<b>Contents:</b>	

**Notes/Conditions:** COMP01-FL07 @ 4'

Photographic Log

									
						Equipment ID:			Equipment Type:
Material:		Volume:	Contents:		Material:		Volume:	Contents:	
Notes/Conditions: WHS07-N @ 0-6"					Notes/Conditions: WHS07-S @ 0-6"				

### Photographic Log



<b>Equipment ID:</b>		<b>Equipment Type:</b>		<b>Equipment ID:</b>		<b>Equipment Type:</b>	
<b>Material:</b>	<b>Volume:</b>	<b>Contents:</b>		<b>Material:</b>	<b>Volume:</b>	<b>Contents:</b>	
<b>Notes/Conditions:</b> wc02 @ 8'				<b>Notes/Conditions:</b> WH08-B @ 9'			

Photographic Log



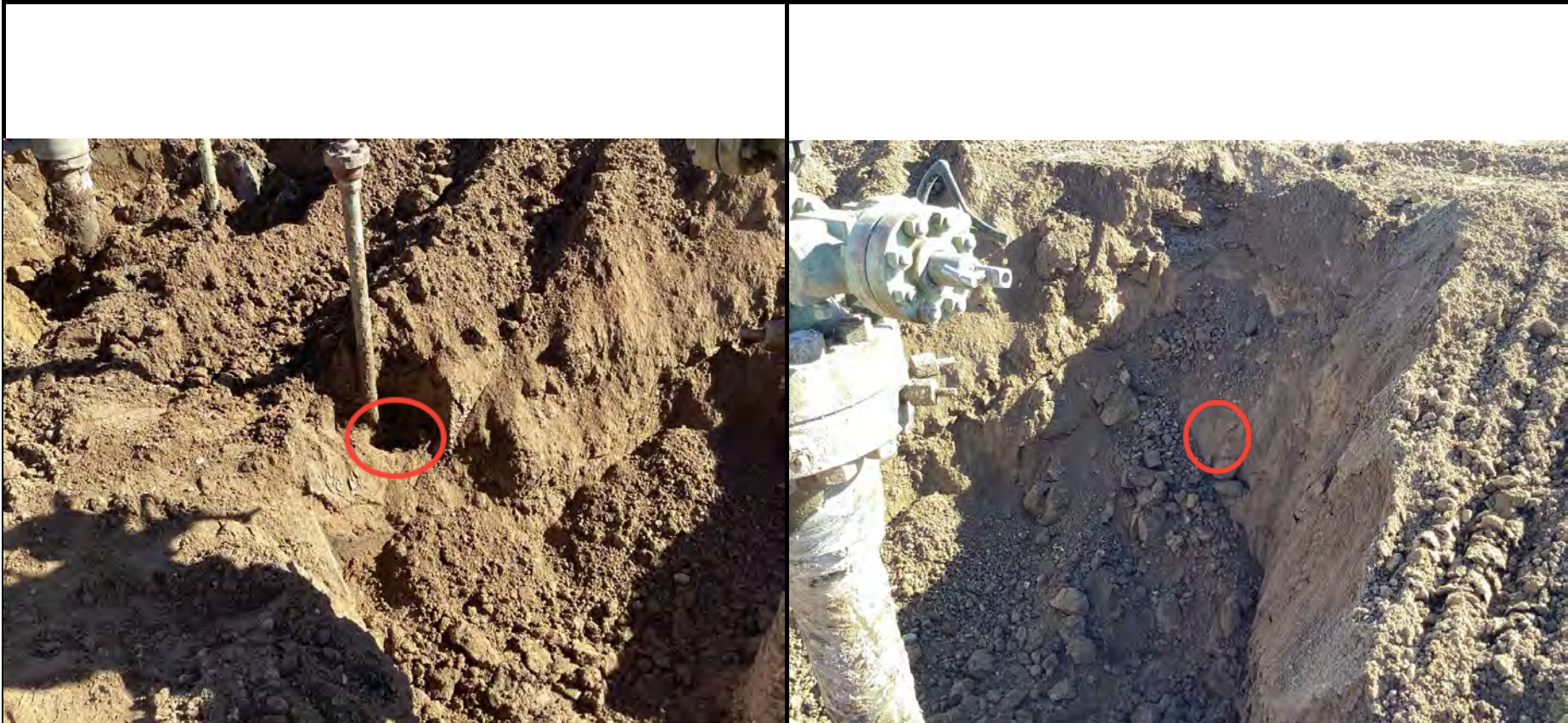
<b>Equipment ID:</b>		<b>Equipment Type:</b>	
<b>Material:</b>	<b>Volume:</b>	<b>Contents:</b>	

**Notes/Conditions:** WH08-N @ 4'

<b>Equipment ID:</b>		<b>Equipment Type:</b>	
<b>Material:</b>	<b>Volume:</b>	<b>Contents:</b>	

**Notes/Conditions:** WH08-W @ 4'

Photographic Log





<b>Equipment ID:</b>		<b>Equipment Type:</b>	
<b>Material:</b>	<b>Volume:</b>	<b>Contents:</b>	

**Notes/Conditions:** WH08-E @ 4'

<b>Equipment ID:</b>		<b>Equipment Type:</b>	
<b>Material:</b>	<b>Volume:</b>	<b>Contents:</b>	

**Notes/Conditions:** WH08-S @ 4'

Photographic Log

					
<b>Equipment ID:</b>		<b>Equipment Type:</b>	<b>Equipment ID:</b>		<b>Equipment Type:</b>
<b>Material:</b>	<b>Volume:</b>	<b>Contents:</b>	<b>Material:</b>	<b>Volume:</b>	<b>Contents:</b>
<b>Notes/Conditions:</b> WHS08-N @ 0-6"			<b>Notes/Conditions:</b> WHS08-S @ 0-6"		



<b>SITE NAME:</b> Merritt Combined Wellheads							<b>DATE:</b> 2/29/2024	<b>REM. PROJECT #:</b> 33447	<b>WEATHER:</b> 60s		
<b>SITE DIRECTIONS:</b> CR 31 & 72, W 0.3 miles, S 0.1 M, then W into site							<b>CLIENT:</b> PDC				
<b>LEGALS AND LAT/LONG:</b> 40.509320, -104.781140							<b>TASMAN PERSONNEL:</b> JH				
<b>SOIL TYPES:</b> Well Graded Sand - SW							<b>SURFACE GRADIENT:</b> South				
SOIL SAMPLING							FACILITY INFRASTRUCTURE				
Date/Time	Soil Sample ID	PID (ppm)	Visual	Olfactory	Photo?	Grab or Lab Sample?	EQUIPMENT		Quantity		
							Above Ground Storage Tank (AST)				
2/29/2024 14:20	WC02 @ 8'	339.1	HC Staining	Slight HC Odor	Yes	On-Hold	Buried or Partially Buried Vessel				
2/29/2024 14:50	WH08-E @ 4'	0.7	No Staining	No Odor	Yes	On-Hold	Separator				
3/1/2024 09:15	WH09 @ 8'	0.4	Organic Content	Organic Odor	Yes	Lab	Emission Control Device (ECD)				
3/1/2024 09:20	FLR09 @ 4'	0.4	No Staining	No Odor	Yes	Lab	Dump Line				
3/1/2024 09:25	COMP01-FL09 @ 4'	0.1	No Staining	No Odor	Yes	Lab	Wellhead				
3/1/2024 09:30	WHS09-N @ 0-6"	3.7	No Staining	No Odor	Yes	Grab	Flowline				
3/1/2024 09:29	WHS09-S @ 0-6"	0.5	No Staining	No Odor	Yes	Grab	Other:				
3/1/2024 09:28	WHS09-E @ 0-6"	1.4	No Staining	No Odor	Yes	Grab	Soil Loads Removed				
3/1/2024 11:30	SS01 @ 9'	0.7	No Staining	No Odor	Yes	Lab	IMPACTED SOIL IDENTIFIED?				
3/1/2024 11:35	SS02 @ 6'	0.8	No Staining	No Odor	Yes	Lab	ESTIMATED VOLUME OF IMPACTS:				
3/1/2024 11:40	SS03 @ 6'	0.6	No Staining	No Odor	Yes	Lab	Date	Number	CY		
3/1/2024 11:45	SS04 @ 6'	1.1	No Staining	No Odor	Yes	Lab	3/1/2024	2	15		
3/1/2024 11:50	SS05 @ 6'	2.3	No Staining	No Odor	Yes	Lab					
3/1/2024 11:55	SS06 @ 2.5'	0.8	No Staining	No Odor	Yes	Lab					
3/1/2024 13:20	BKG01 @ 4'	0.7	No Staining	No Odor	Yes	Lab					
3/1/2024 13:25	BKG01 @ 6'	1.0	No Staining	No Odor	Yes	Lab	Total Removed		2	15	
3/1/2024 13:30	BKG01 @ 8'	0.0	No Staining	No Odor	Yes	Lab	Disposal Facility: North Weld Ault-WM				
							Groundwater Recovery				
							DATE GW ENCOUNTERED:		DEPTH:		
							GROUNDWATER IN CONTACT WITH IMPACTED SOIL?				
							LNAPL OR SHEEN OBSERVED ON GW?				
GROUNDWATER SAMPLING							Date	BBLs			
Date/Time	Groundwater Sample ID	Depth Collected	Turbid?	Sheen?	Odor?	Photo?					
							Total Removed		0		
							Disposal Facility:				



### Photographic Log



<b>Equipment ID:</b>		<b>Equipment Type:</b>	
<b>Material:</b>	<b>Volume:</b>	<b>Contents:</b>	

**Notes/Conditions:** WH09 @ 8'

<b>Equipment ID:</b>		<b>Equipment Type:</b>	
<b>Material:</b>	<b>Volume:</b>	<b>Contents:</b>	

**Notes/Conditions:** FLR09 @ 4'

### Photographic Log



<b>Equipment ID:</b>		<b>Equipment Type:</b>		<b>Equipment ID:</b>		<b>Equipment Type:</b>	
<b>Material:</b>	<b>Volume:</b>	<b>Contents:</b>		<b>Material:</b>	<b>Volume:</b>	<b>Contents:</b>	
<b>Notes/Conditions:</b> COMP01-FL09 @ 4'				<b>Notes/Conditions:</b> WHS09-N @ 0-6"			

Photographic Log



<b>Equipment ID:</b>		<b>Equipment Type:</b>	
<b>Material:</b>	<b>Volume:</b>	<b>Contents:</b>	

**Notes/Conditions:** WHS09-E @ 0-6"

<b>Equipment ID:</b>		<b>Equipment Type:</b>	
<b>Material:</b>	<b>Volume:</b>	<b>Contents:</b>	

**Notes/Conditions:** WHS09-S @ 0-6"

### Photographic Log



<b>Equipment ID:</b>	<b>Equipment Type:</b>		
<b>Material:</b>	<b>Volume:</b>	<b>Contents:</b>	

**Notes/Conditions:** SS05 @ 6'

<b>Equipment ID:</b>	<b>Equipment Type:</b>		
<b>Material:</b>	<b>Volume:</b>	<b>Contents:</b>	

**Notes/Conditions:** SS04 @ 6'

### Photographic Log



<b>Equipment ID:</b>		<b>Equipment Type:</b>	
<b>Material:</b>	<b>Volume:</b>	<b>Contents:</b>	

**Notes/Conditions:** SS03 @ 6'

<b>Equipment ID:</b>		<b>Equipment Type:</b>	
<b>Material:</b>	<b>Volume:</b>	<b>Contents:</b>	

**Notes/Conditions:** SS02 @ 6'

Photographic Log



<b>Equipment ID:</b>		<b>Equipment Type:</b>	
<b>Material:</b>	<b>Volume:</b>	<b>Contents:</b>	
<b>Notes/Conditions:</b> SS01 @ 9'			

<b>Equipment ID:</b>		<b>Equipment Type:</b>	
<b>Material:</b>	<b>Volume:</b>	<b>Contents:</b>	
<b>Notes/Conditions:</b> SS06 @ 2.5'			

**Photographic Log**

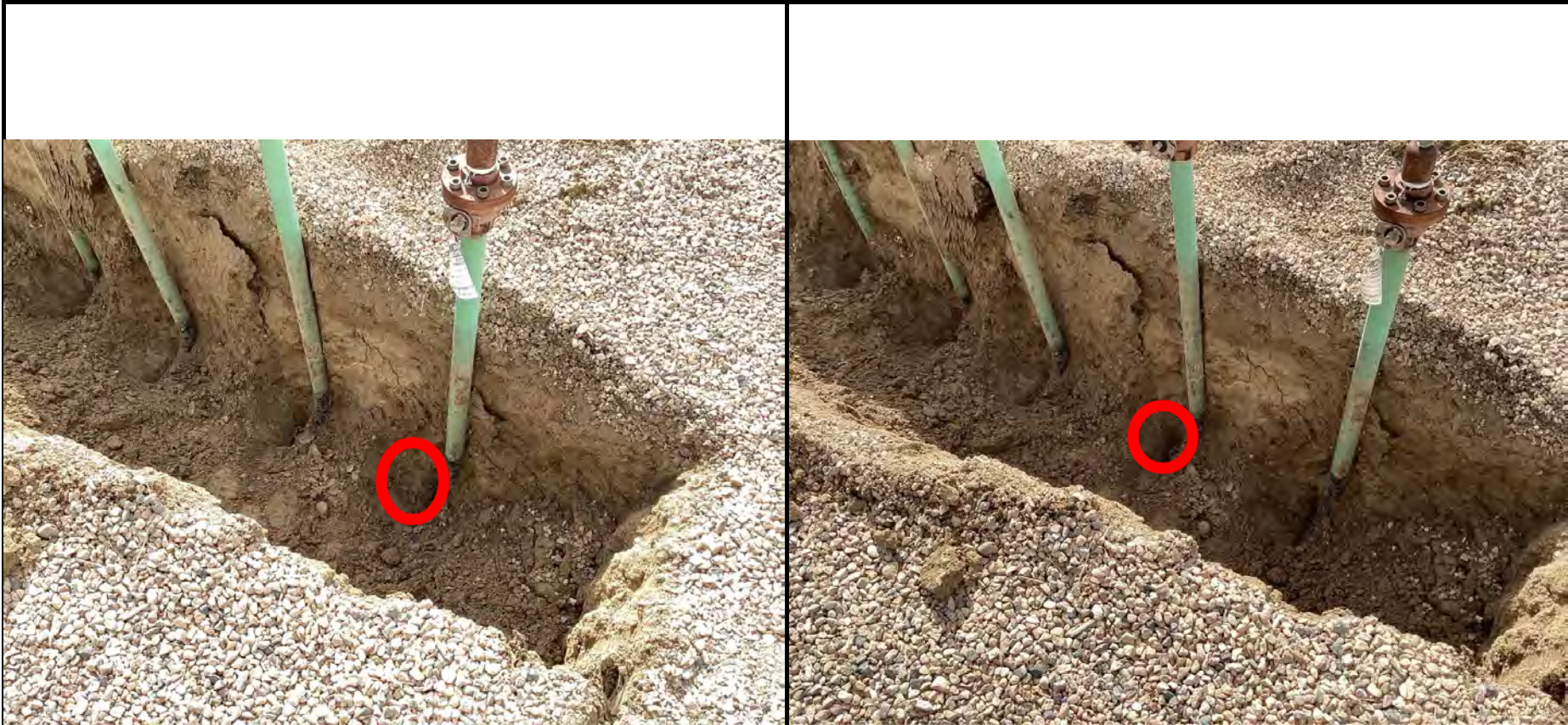
					
<b>Equipment ID:</b>		<b>Equipment Type:</b>	<b>Equipment ID:</b>		<b>Equipment Type:</b>
<b>Material:</b>	<b>Volume:</b>	<b>Contents:</b>	<b>Material:</b>	<b>Volume:</b>	<b>Contents:</b>
<b>Notes/Conditions:</b> bkg01			<b>Notes/Conditions:</b>		



<b>SITE NAME:</b> Merritt Combined Wellheads							<b>DATE:</b> 3/12/2024	<b>REM. PROJECT #:</b> 33447	<b>WEATHER:</b> 60s		
<b>SITE DIRECTIONS:</b> CR 31 & 72, W 0.25 miles, S 0.1 M into site							<b>CLIENT:</b> PDC				
<b>LEGALS AND LAT/LONG:</b> 40.509320, -104.781140							<b>TASMAN PERSONNEL:</b> JH				
<b>SOIL TYPES:</b> Well Graded Sand - SW							<b>SURFACE GRADIENT:</b> South				
<b>SOIL SAMPLING</b>							<b>FACILITY INFRASTRUCTURE</b>				
Date/Time	Soil Sample ID	PID (ppm)	Visual	Olfactory	Photo?	Grab or Lab Sample?	EQUIPMENT		Quantity		
							Above Ground Storage Tank (AST)				
3/12/2024 10:30	MAN01-FL01 @ 3'	0.0	No Staining	No Odor	Yes	Lab	Buried or Partially Buried Vessel				
3/12/2024 10:35	MAN01-FL02 @ 3'	0.0	No Staining	No Odor	Yes	Lab	Separator				
3/12/2024 10:40	MAN01-FL03 @ 3'	0.0	No Staining	No Odor	Yes	Lab	Emission Control Device (ECD)				
3/12/2024 10:45	MAN01-FL04 @ 3'	0.0	No Staining	No Odor	Yes	Lab	Dump Line				
3/12/2024 10:50	MAN01-FL05 @ 3'	0.0	No Staining	No Odor	Yes	Lab	Wellhead				
3/12/2024 10:55	MAN01-FL06 @ 3'	0.0	No Staining	No Odor	Yes	Lab	Flowline				
3/12/2024 11:00	MAN01-FL07 @ 3'	0.0	No Staining	No Odor	Yes	Lab	Other:				
3/12/2024 11:05	MAN01-FL08 @ 3'	0.0	No Staining	No Odor	Yes	Lab	Soil Loads Removed				
3/12/2024 11:10	MAN02-DL01 @ 3'	0.0	No Staining	No Odor	Yes	Lab	<b>IMPACTED SOIL IDENTIFIED?</b>				
3/12/2024 11:15	MAN02-DL02 @ 3'	0.1	No Staining	No Odor	Yes	Lab	<b>ESTIMATED VOLUME OF IMPACTS:</b>				
3/12/2024 11:20	MAN02-DL03 @ 3'	0.0	No Staining	No Odor	Yes	Lab	Date		Number	CY	
3/12/2024 11:25	MAN02-DL04 @ 3'	0.0	No Staining	No Odor	Yes	Lab					
3/12/2024 11:30	MAN02-DL05 @ 3'	0.1	No Staining	No Odor	Yes	Lab					
3/12/2024 11:35	MAN02-DL06 @ 3'	0.0	No Staining	No Odor	Yes	Lab					
3/12/2024 11:40	MAN02-DL07 @ 3'	0.0	No Staining	No Odor	Yes	Lab					
3/12/2024 11:45	MAN02-DL08 @ 3'	0.1	No Staining	No Odor	Yes	Lab	Total Removed		0	0	
3/12/2024 11:50	MAN02-DL09 @ 3'	0.1	No Staining	No Odor	Yes	Lab	<b>Disposal Facility:</b>				
3/13/2024 11:53	FLR05 @ 4'	39.0	No Staining	HC Odor	Yes	Lab	Groundwater Recovery				
3/13/2024 11:54	MAN01-DL04 @ 4'	0.0	No Staining	No Odor	Yes	Lab	<b>DATE GW ENCOUNTERED:</b>			<b>DEPTH:</b>	
3/13/2024 11:55	COMP01-FL05 @ 4'	0.0	No Staining	No Odor	Yes	Lab	<b>GROUNDWATER IN CONTACT WITH IMPACTED SOIL?</b>				
3/13/2024 13:40	FL07-02 @ 4'	0.0	No Staining	No Odor	Yes	Lab					
							<b>LNAPL OR SHEEN OBSERVED ON GW?</b>				
<b>GROUNDWATER SAMPLING</b>							Date		BBLs		
Date/Time	Groundwater Sample ID	Depth Collected	Turbid?	Sheen?	Odor?	Photo?					
							Total Removed		0		
							<b>Disposal Facility:</b>				





Photographic Log

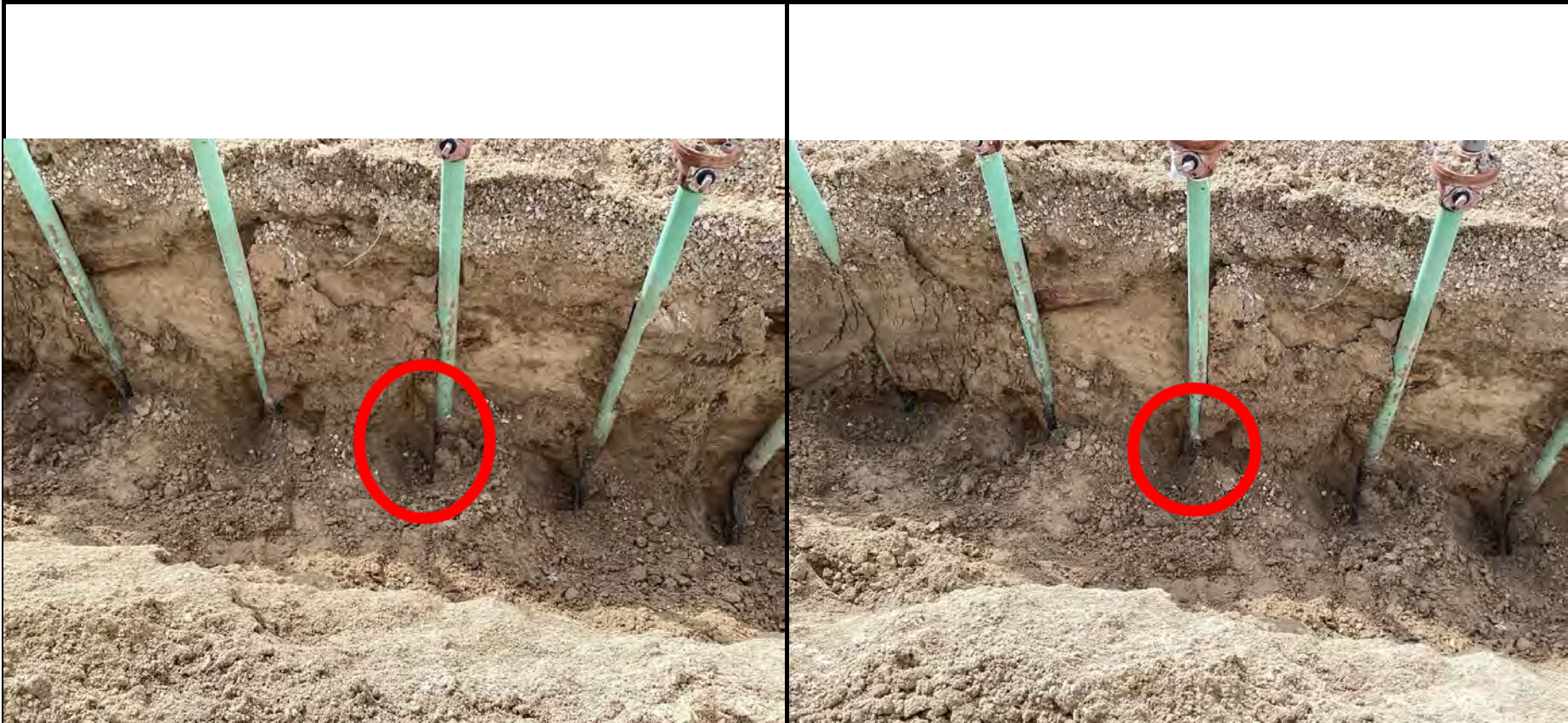


<b>Equipment ID:</b>		<b>Equipment Type:</b>		<b>Equipment ID:</b>		<b>Equipment Type:</b>	
<b>Material:</b>	<b>Volume:</b>	<b>Contents:</b>		<b>Material:</b>	<b>Volume:</b>	<b>Contents:</b>	
<b>Notes/Conditions:</b> MAN01-FL01				<b>Notes/Conditions:</b> MAN01-FL02			

Photographic Log

					
Material:	Volume:	Contents:	Material:	Volume:	Contents:
Notes/Conditions: MAN01-FL03			Notes/Conditions: MAN01-FL04		

Photographic Log



<b>Equipment ID:</b>		<b>Equipment Type:</b>	
<b>Material:</b>	<b>Volume:</b>	<b>Contents:</b>	
<b>Notes/Conditions:</b> MAN01-FL05			

<b>Equipment ID:</b>		<b>Equipment Type:</b>	
<b>Material:</b>	<b>Volume:</b>	<b>Contents:</b>	
<b>Notes/Conditions:</b> MAN01-FL06			

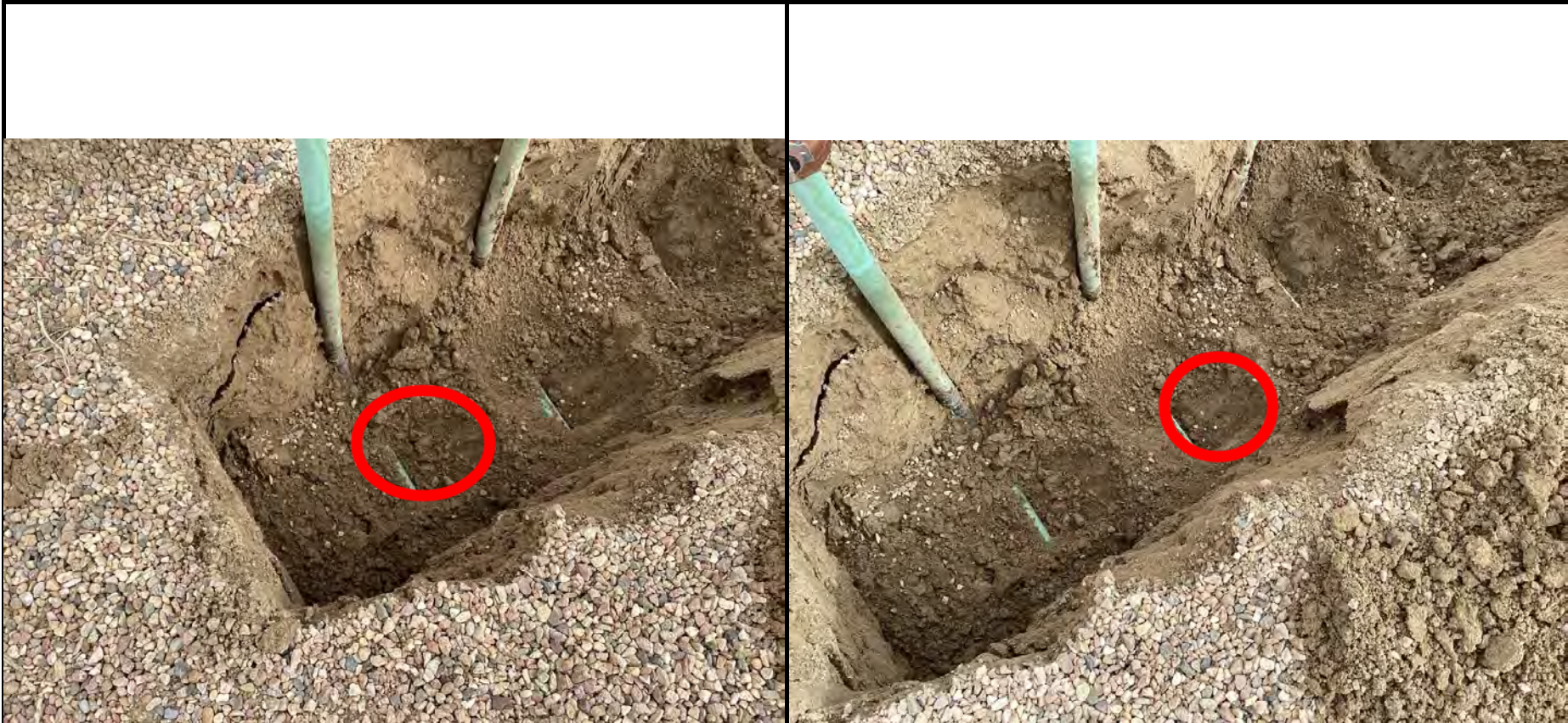
Photographic Log



<b>Equipment ID:</b>		<b>Equipment Type:</b>	
<b>Material:</b>	<b>Volume:</b>	<b>Contents:</b>	
<b>Notes/Conditions:</b> MAN01-FL07			

<b>Equipment ID:</b>		<b>Equipment Type:</b>	
<b>Material:</b>	<b>Volume:</b>	<b>Contents:</b>	
<b>Notes/Conditions:</b> MAN01-FL08			

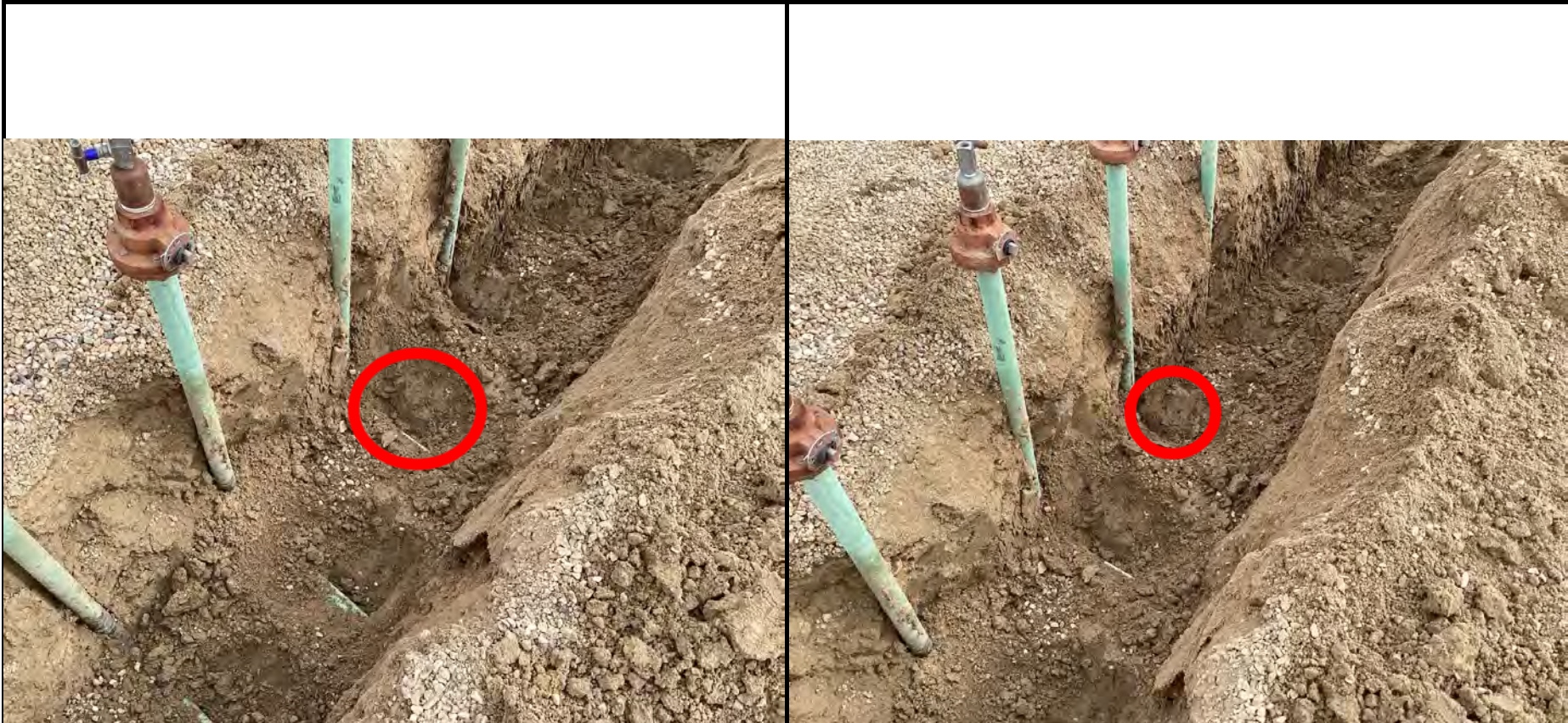
Photographic Log



<b>Equipment ID:</b>		<b>Equipment Type:</b>	
<b>Material:</b>	<b>Volume:</b>	<b>Contents:</b>	
<b>Notes/Conditions:</b> MAN02-DL01			

<b>Equipment ID:</b>		<b>Equipment Type:</b>	
<b>Material:</b>	<b>Volume:</b>	<b>Contents:</b>	
<b>Notes/Conditions:</b> MAN02-DL02			

### Photographic Log



<b>Equipment ID:</b>	<b>Equipment Type:</b>
<b>Material:</b>	<b>Volume:</b>
<b>Contents:</b>	

**Notes/Conditions:** MAN02-DL03

<b>Equipment ID:</b>	<b>Equipment Type:</b>
<b>Material:</b>	<b>Volume:</b>
<b>Contents:</b>	

**Notes/Conditions:** MAN02-DL04

Photographic Log



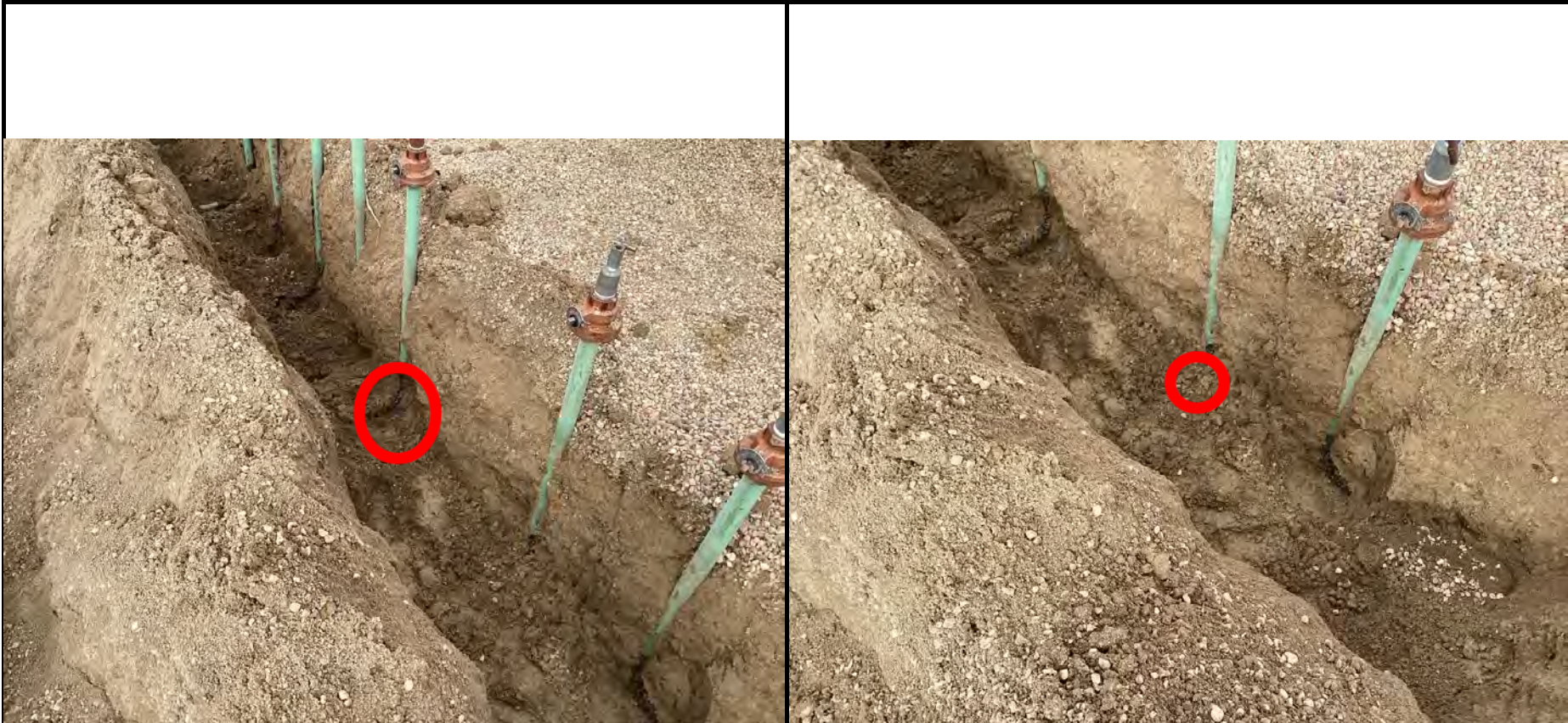
<b>Equipment ID:</b>		<b>Equipment Type:</b>	
<b>Material:</b>	<b>Volume:</b>	<b>Contents:</b>	

**Notes/Conditions:** MAN02-DL05

<b>Equipment ID:</b>		<b>Equipment Type:</b>	
<b>Material:</b>	<b>Volume:</b>	<b>Contents:</b>	

**Notes/Conditions:** MAN02-DL06

### Photographic Log



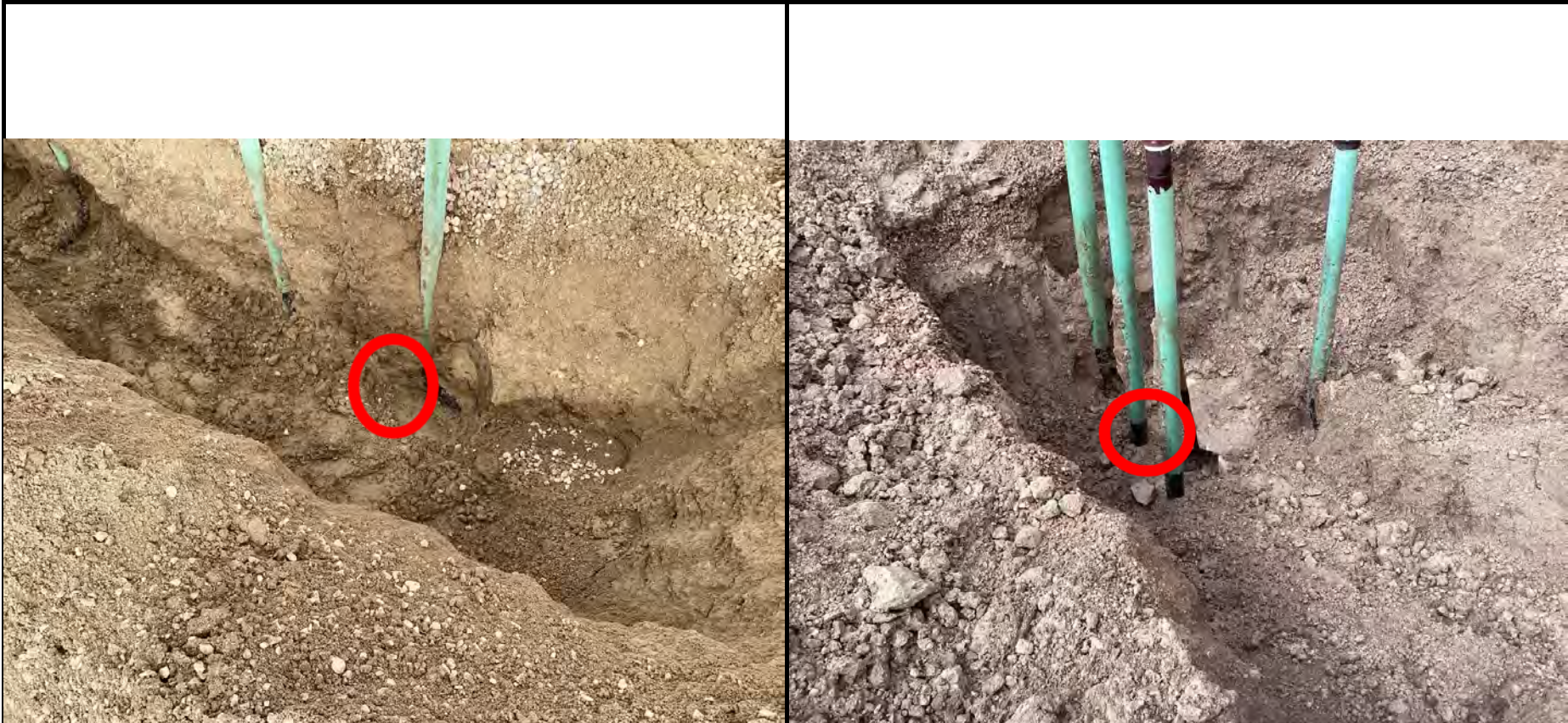
<b>Equipment ID:</b>	<b>Equipment Type:</b>
<b>Material:</b>	<b>Volume:</b>
<b>Contents:</b>	

**Notes/Conditions:** MAN02-DL07

<b>Equipment ID:</b>	<b>Equipment Type:</b>
<b>Material:</b>	<b>Volume:</b>
<b>Contents:</b>	

**Notes/Conditions:** MAN02-DL08

Photographic Log



<b>Equipment ID:</b>	<b>Equipment Type:</b>
<b>Material:</b>	<b>Volume:</b>
<b>Contents:</b>	

**Notes/Conditions:** MAN02-DL09

<b>Equipment ID:</b>	<b>Equipment Type:</b>
<b>Material:</b>	<b>Volume:</b>
<b>Contents:</b>	

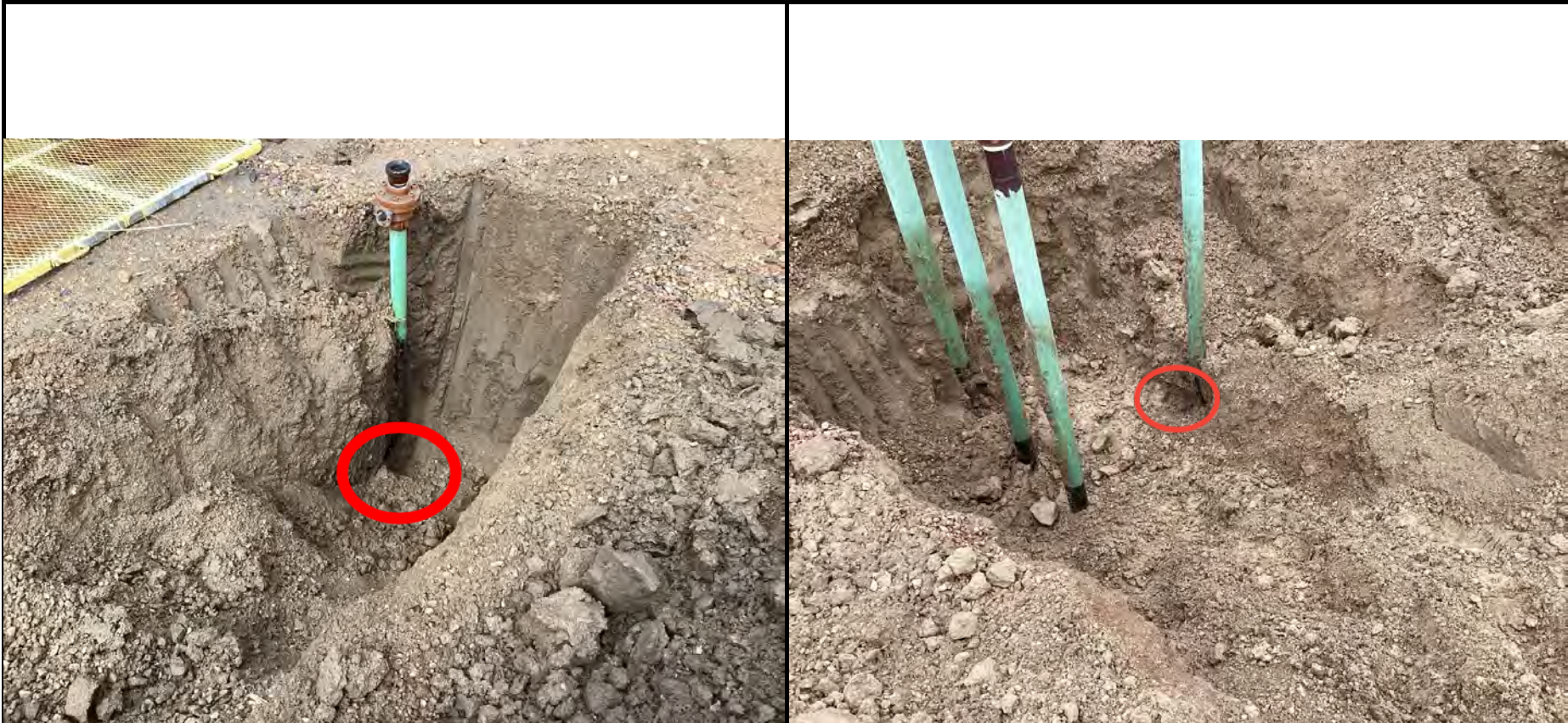
**Notes/Conditions:** MAN01-DL04

Photographic Log



<b>Equipment ID:</b>		<b>Equipment Type:</b>		<b>Equipment ID:</b>		<b>Equipment Type:</b>	
<b>Material:</b>	<b>Volume:</b>	<b>Contents:</b>		<b>Material:</b>	<b>Volume:</b>	<b>Contents:</b>	
<b>Notes/Conditions:</b> MAN02-FL01				<b>Notes/Conditions:</b> FLR05			

Photographic Log



<b>Equipment ID:</b>		<b>Equipment Type:</b>	
<b>Material:</b>	<b>Volume:</b>	<b>Contents:</b>	
<b>Notes/Conditions:</b> COMP01-FL05			

<b>Equipment ID:</b>		<b>Equipment Type:</b>	
<b>Material:</b>	<b>Volume:</b>	<b>Contents:</b>	
<b>Notes/Conditions:</b> FL07-02			



<b>SITE NAME:</b> Merritt Sec 9 Tank Battery							<b>DATE:</b> 3/13/2024	<b>REM. PROJECT #:</b> 33447	<b>WEATHER:</b> 50s Rain		
<b>SITE DIRECTIONS:</b> CR 31 & 72, W 0.25 miles, S 0.1 M into site							<b>CLIENT:</b> PDC				
<b>LEGALS AND LAT/LONG:</b> 40.509320, -104.781140							<b>TASMAN PERSONNEL:</b> JH				
<b>SOIL TYPES:</b> Well Graded Sand - SW							<b>SURFACE GRADIENT:</b> South				
<b>SOIL SAMPLING</b>							<b>FACILITY INFRASTRUCTURE</b>				
Date/Time	Soil Sample ID	PID (ppm)	Visual	Olfactory	Photo?	Grab or Lab Sample?	EQUIPMENT		Quantity		
							Above Ground Storage Tank (AST)				
3/13/2024 11:00	FL04-01 @ 4'	0.2	No Staining	No Odor	Yes	Lab	Buried or Partially Buried Vessel				
3/13/2024 11:05	FL09-01 @ 4'	0.0	No Staining	No Odor	Yes	Lab	Separator				
3/13/2024 11:10	COMP01-FL08-01 @ 4'	0.7	HC Staining	Slight HC Odor	Yes	Lab	Emission Control Device (ECD)				
3/13/2024 11:15	FL06-01 @ 4'	0.0	No Staining	No Odor	Yes	Lab	Dump Line				
3/13/2024 11:20	COMP01-FL04-01 @ 4'	0.0	No Staining	No Odor	Yes	Lab	Wellhead				
3/13/2024 11:21	FL07-01 @ 4'	0.0	No Staining	No Odor	Yes	Lab	Flowline				
3/13/2024 11:22	FL08-01 @ 4'	0.0	No Staining	No Odor	Yes	Lab	Other:				
3/13/2024 11:23	COMP01-FL06-01 @ 4'	0.0	No Staining	No Odor	Yes	Lab	Soil Loads Removed				
3/13/2024 11:24	COMP01-FL07-01 @ 4'	0.0	No Staining	No Odor	Yes	Lab	<b>IMPACTED SOIL IDENTIFIED?</b>				
3/13/2024 11:30	FL01-01 @ 4'	0.0	No Staining	No Odor	Yes	Lab	<b>ESTIMATED VOLUME OF IMPACTS:</b>				
3/13/2024 11:31	COMP01-FL01-01 @ 4'	0.0	No Staining	No Odor	Yes	Lab	Date		Number		CY
3/13/2024 11:32	FL02-01 @ 4'	0.1	No Staining	No Odor	Yes	Lab					
3/13/2024 11:33	COMP01-FL02-01 @ 4'	0.0	No Staining	No Odor	Yes	Lab					
3/13/2024 11:34	FL03-01 @ 4'	0.0	No Staining	No Odor	Yes	Lab					
3/13/2024 11:45	COMP01-FL03-01 @ 4'	0.0	No Staining	No Odor	Yes	Lab					
3/13/2024 11:46	FL05-01 @ 4'	0.0	No Staining	No Odor	Yes	Lab	Total Removed		0		0
3/13/2024 11:47	COMP01-FL05-01 @ 4'	0.0	No Staining	No Odor	Yes	Lab	<b>Disposal Facility:</b>				
3/13/2024 11:48	COMP01-FL09-01 @ 4'	0.0	No Staining	No Odor	Yes	Lab	Groundwater Recovery				
3/13/2024 11:49	MAN02-FL01 @ 4'	0.0	No Staining	No Odor	Yes	Lab	<b>DATE GW ENCOUNTERED:</b>			<b>DEPTH:</b>	
3/13/2024 11:50	MAN01-DL01 @ 4'	0.0	No Staining	No Odor	Yes	Lab	<b>GROUNDWATER IN CONTACT WITH IMPACTED SOIL?</b>				
3/13/2024 11:51	MAN01-DL02 @ 4'	0.0	No Staining	No Odor	Yes	Lab					
3/13/2024 11:52	MAN01-DL03 @ 4'	0.0	No Staining	No Odor	Yes	Lab	<b>LNAPL OR SHEEN OBSERVED ON GW?</b>				
<b>GROUNDWATER SAMPLING</b>							Date		BBLs		
Date/Time	Groundwater Sample ID	Depth Collected	Turbid?	Sheen?	Odor?	Photo?					
							Total Removed		0		
							<b>Disposal Facility:</b>				

**Photographic Log**


<b>Equipment ID:</b>		<b>Equipment Type:</b>	
<b>Material:</b>	<b>Volume:</b>	<b>Contents:</b>	
<b>Notes/Conditions:</b> FL04-01			

<b>Equipment ID:</b>		<b>Equipment Type:</b>	
<b>Material:</b>	<b>Volume:</b>	<b>Contents:</b>	
<b>Notes/Conditions:</b> FL06-01			

**Photographic Log**


<b>Equipment ID:</b>		<b>Equipment Type:</b>	
<b>Material:</b>	<b>Volume:</b>	<b>Contents:</b>	
<b>Notes/Conditions:</b> COMP01-FL04-01			

<b>Equipment ID:</b>		<b>Equipment Type:</b>	
<b>Material:</b>	<b>Volume:</b>	<b>Contents:</b>	
<b>Notes/Conditions:</b> COMP01-FL06-01			

### Photographic Log



<b>Equipment ID:</b>		<b>Equipment Type:</b>	
<b>Material:</b>	<b>Volume:</b>	<b>Contents:</b>	
<b>Notes/Conditions:</b> FL07-01			

<b>Equipment ID:</b>		<b>Equipment Type:</b>	
<b>Material:</b>	<b>Volume:</b>	<b>Contents:</b>	
<b>Notes/Conditions:</b> COMP01-FL07-01			

**Photographic Log**


<b>Equipment ID:</b>		<b>Equipment Type:</b>	
<b>Material:</b>	<b>Volume:</b>	<b>Contents:</b>	
<b>Notes/Conditions:</b> FL08-01			

<b>Equipment ID:</b>		<b>Equipment Type:</b>	
<b>Material:</b>	<b>Volume:</b>	<b>Contents:</b>	
<b>Notes/Conditions:</b> COMP01-FL08-01			

Photographic Log



<b>Equipment ID:</b>		<b>Equipment Type:</b>	
<b>Material:</b>	<b>Volume:</b>	<b>Contents:</b>	
<b>Notes/Conditions:</b> FL09-01			

<b>Equipment ID:</b>		<b>Equipment Type:</b>	
<b>Material:</b>	<b>Volume:</b>	<b>Contents:</b>	
<b>Notes/Conditions:</b> COMP01-FL09-01			

### Photographic Log



<b>Equipment ID:</b>		<b>Equipment Type:</b>	
<b>Material:</b>	<b>Volume:</b>	<b>Contents:</b>	
<b>Notes/Conditions:</b> COMP01-FL05-01			

<b>Equipment ID:</b>		<b>Equipment Type:</b>	
<b>Material:</b>	<b>Volume:</b>	<b>Contents:</b>	
<b>Notes/Conditions:</b> FL05-01			

## Photographic Log



<b>Equipment ID:</b>		<b>Equipment Type:</b>	
<b>Material:</b>	<b>Volume:</b>	<b>Contents:</b>	
<b>Notes/Conditions:</b> COMP01-FL03-01			

<b>Equipment ID:</b>		<b>Equipment Type:</b>	
<b>Material:</b>	<b>Volume:</b>	<b>Contents:</b>	
<b>Notes/Conditions:</b> FL03-01			

Photographic Log



<b>Equipment ID:</b>		<b>Equipment Type:</b>	
<b>Material:</b>	<b>Volume:</b>	<b>Contents:</b>	
<b>Notes/Conditions:</b> COMP01-FL02-01			

<b>Equipment ID:</b>		<b>Equipment Type:</b>	
<b>Material:</b>	<b>Volume:</b>	<b>Contents:</b>	
<b>Notes/Conditions:</b> FL03-01			

### Photographic Log



<b>Equipment ID:</b>		<b>Equipment Type:</b>	
<b>Material:</b>	<b>Volume:</b>	<b>Contents:</b>	
<b>Notes/Conditions:</b> COMP01-FL02-01			

<b>Equipment ID:</b>		<b>Equipment Type:</b>	
<b>Material:</b>	<b>Volume:</b>	<b>Contents:</b>	
<b>Notes/Conditions:</b> FL01-01			

Photographic Log





<b>Equipment ID:</b>		<b>Equipment Type:</b>		<b>Equipment ID:</b>		<b>Equipment Type:</b>	
<b>Material:</b>	<b>Volume:</b>	<b>Contents:</b>		<b>Material:</b>	<b>Volume:</b>	<b>Contents:</b>	
<b>Notes/Conditions:</b> MAN01-DL01/MAN01-DL02				<b>Notes/Conditions:</b> MAN01-DL03			



<b>SITE NAME:</b> Merritt Sec 9 Tank Battery							<b>DATE:</b> 3/20/2024	<b>REM. PROJECT #:</b> 33447	<b>WEATHER:</b> 50s		
<b>SITE DIRECTIONS:</b> CR 31 & 72, W 0.3 miles, S 0.1 M, then W into site							<b>CLIENT:</b> PDC				
<b>LEGALS AND LAT/LONG:</b> 40.509320, -104.781140							<b>TASMAN PERSONNEL:</b> JH				
<b>SOIL TYPES:</b> Well Graded Sand - SW							<b>SURFACE GRADIENT:</b> South				
<b>SOIL SAMPLING</b>							<b>FACILITY INFRASTRUCTURE</b>				
Date/Time	Soil Sample ID	PID (ppm)	Visual	Olfactory	Photo?	Grab or Lab Sample?	EQUIPMENT		Quantity		
							Above Ground Storage Tank (AST)				
3/20/2024 11:00	FL01-02 @ 4'	0.1	No Staining	No Odor	Yes	Grab	Buried or Partially Buried Vessel				
3/20/2024 11:05	FL01-03 @ 4'	0.1	No Staining	No Odor	Yes	Lab	Separator				
3/20/2024 11:55	FL01-04 @ 4'	0.4	No Staining	No Odor	Yes	Lab	Emission Control Device (ECD)				
3/20/2024 14:10	FL01-05 @ 6'	0.0	No Staining	No Odor	Yes	Lab	Dump Line				
3/20/2024 14:40	FL01-06 @ 7'	0.0	No Staining	No Odor	Yes	Lab	Wellhead				
3/20/2024 12:45	FL01-07 @ 4'	0.0	No Staining	No Odor	Yes	Grab	Flowline				
3/20/2024 13:10	FL01-08 @ 4'	0.0	No Staining	No Odor	Yes	Lab	Other:				
3/20/2024 13:25	GL02-02 @ 4'	0.0	No Staining	No Odor	Yes	Lab	Soil Loads Removed				
3/21/2024 10:30	GL02-01 @ 7'	0.1	No Staining	No Odor	Yes	Lab	<b>IMPACTED SOIL IDENTIFIED?</b>				
3/21/2024 10:35	FL02-02 @ 7'	0.0	No Staining	No Odor	Yes	Lab	<b>ESTIMATED VOLUME OF IMPACTS:</b>				
3/21/2024 10:40	GL01-01 @ 7'	0.0	No Staining	No Odor	Yes	Lab	Date		Number		CY
							Total Removed		0	0	
							<b>Disposal Facility:</b> WM - Ault				
							<b>Groundwater Recovery</b>				
							<b>DATE GW ENCOUNTERED:</b>			<b>DEPTH:</b>	
							<b>GROUNDWATER IN CONTACT WITH IMPACTED SOIL?</b>				
							<b>LNAPL OR SHEEN OBSERVED ON GW?</b>				
<b>GROUNDWATER SAMPLING</b>							Date		BBLs		
Date/Time	Groundwater Sample ID	Depth Collected	Turbid?	Sheen?	Odor?	Photo?					
							Total Removed		0		
							<b>Disposal Facility:</b>				



### Photographic Log

					
Material:	Volume:	Contents:	Material:	Volume:	Contents:
Notes/Conditions: FL01-02 @ 4'			Notes/Conditions: FL01-03 @ 4'		

### Photographic Log



<b>Equipment ID:</b>		<b>Equipment Type:</b>	
<b>Material:</b>	<b>Volume:</b>	<b>Contents:</b>	

**Notes/Conditions:** FL01-04 @ 4'

<b>Equipment ID:</b>		<b>Equipment Type:</b>	
<b>Material:</b>	<b>Volume:</b>	<b>Contents:</b>	

**Notes/Conditions:** FL01-07 @ 4'

Photographic Log

					
Material:	Volume:	Contents:	Material:	Volume:	Contents:
Notes/Conditions: FL01-08 @ 4'			Notes/Conditions: GL02-02 @ 4'		

Photographic Log

									
						Equipment ID:			Equipment Type:
Material:		Volume:	Contents:		Material:		Volume:	Contents:	
Notes/Conditions: FL01-05					Notes/Conditions: FL01-06 @ 4'				

Photographic Log



<b>Equipment ID:</b>			<b>Equipment Type:</b>			<b>Equipment ID:</b>			<b>Equipment Type:</b>		
<b>Material:</b>		<b>Volume:</b>		<b>Contents:</b>		<b>Material:</b>		<b>Volume:</b>		<b>Contents:</b>	
<b>Notes/Conditions:</b>						<b>Notes/Conditions:</b> GL02-01 @ 7'					

Photographic Log



<b>Equipment ID:</b>		<b>Equipment Type:</b>		<b>Equipment ID:</b>		<b>Equipment Type:</b>	
<b>Material:</b>	<b>Volume:</b>	<b>Contents:</b>		<b>Material:</b>	<b>Volume:</b>	<b>Contents:</b>	
<b>Notes/Conditions:</b> GL01-01				<b>Notes/Conditions:</b> FL02-02			



<b>SITE NAME:</b> Merritt Combined Wellheads							<b>DATE:</b> 4/3/2024	<b>REM. PROJECT #:</b> 33447	<b>WEATHER:</b> 70s	
<b>SITE DIRECTIONS:</b> CR 31 & 72, W 0.3 miles, S 0.1 M, then W into site							<b>CLIENT:</b> PDC			
<b>LEGALS AND LAT/LONG:</b> 40.509320, -104.781140							<b>TASMAN PERSONNEL:</b> JH			
<b>SOIL TYPES:</b> Well Graded Sand - SW							<b>SURFACE GRADIENT:</b> South			
<b>SOIL SAMPLING</b>							<b>FACILITY INFRASTRUCTURE</b>			
Date/Time	Soil Sample ID	PID (ppm)	Visual	Olfactory	Photo?	Grab or Lab Sample?	EQUIPMENT		Quantity	
							Above Ground Storage Tank (AST)			
4/3/2024 11:00	BKG02 @ 4'	0.5	No Staining	No Odor	Yes	Lab	Buried or Partially Buried Vessel			
4/3/2024 11:05	BKG02 @ 6'	0.4	No Staining	No Odor	Yes	Lab	Separator			
4/3/2024 11:10	BKG02 @ 8'	0.4	No Staining	No Odor	Yes	Lab	Emission Control Device (ECD)			
							Dump Line			
							Wellhead			
							Flowline			
							Other:			
							<b>Soil Loads Removed</b>			
							<b>IMPACTED SOIL IDENTIFIED?</b>			
							<b>ESTIMATED VOLUME OF IMPACTS:</b>			
							<b>Date</b>	<b>Number</b>	<b>CY</b>	
							<b>Total Removed</b>		0	
							<b>Disposal Facility:</b>			
							<b>Groundwater Recovery</b>			
							<b>DATE GW ENCOUNTERED:</b>		<b>DEPTH:</b>	
							<b>GROUNDWATER IN CONTACT WITH IMPACTED SOIL?</b>			
							<b>LNAPL OR SHEEN OBSERVED ON GW?</b>			
<b>GROUNDWATER SAMPLING</b>							<b>Date</b>	<b>BBLS</b>		
Date/Time	Groundwater Sample ID	Depth Collected	Turbid?	Sheen?	Odor?	Photo?				
							<b>Total Removed</b>		0	
							<b>Disposal Facility:</b>			

Photographic Log



<b>Equipment ID:</b>			<b>Equipment Type:</b>			<b>Equipment ID:</b>			<b>Equipment Type:</b>		
<b>Material:</b>		<b>Volume:</b>		<b>Contents:</b>		<b>Material:</b>		<b>Volume:</b>		<b>Contents:</b>	
<b>Notes/Conditions:</b>						<b>Notes/Conditions:</b> BKG02					