

DATE:	March 13, 2024
DESIGNED BY:	C. Hamlin
DRAWN BY:	J. Hestmark



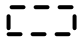



**Tasman, Inc.**  
6855 W. 119<sup>th</sup> Ave.  
Broomfield, CO 80020

**PDC Energy, Inc. (69175) – DJ Basin**  
**Former Merritt Combined Wellheads**  
NWNE, Section 9, Township 6 North, Range 66 West  
Weld County, Colorado

SOIL SAMPLE  
LOCATION MAP  
(WELLHEADS)

FIGURE  
1

**Legend**

-  Excavation Extent  
(Collected via Trimble GPS)
-  Shared Flowline Trench Extent  
(Collected via Trimble GPS)
-  Underground Flowline Location  
(Collected via Trimble GPS)
-  Laboratory Soil Sample Location  
(Collected via Trimble GPS)

**Notes**

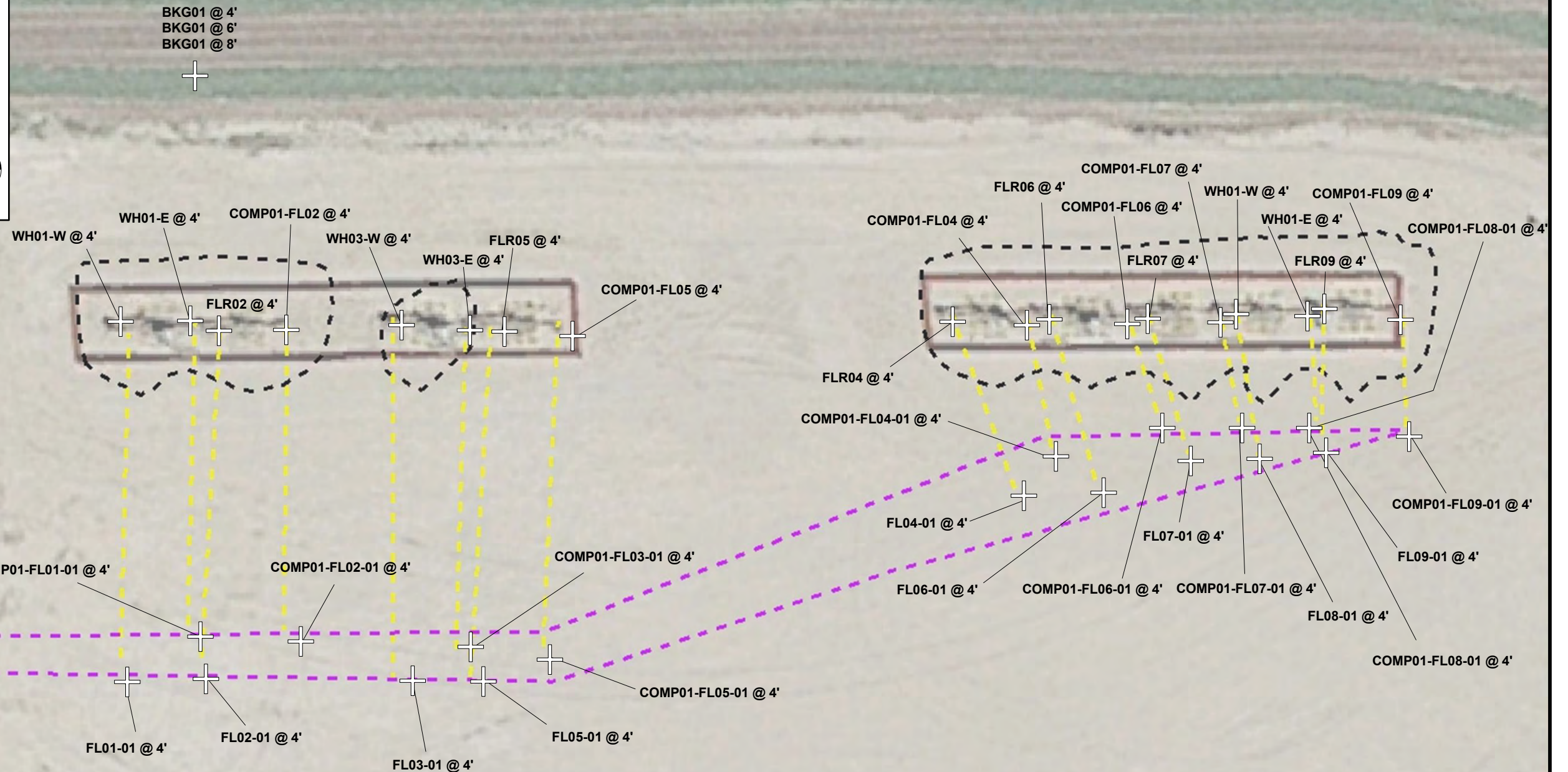
All locations are approximate unless otherwise noted.

GPS – Global Positioning System

0 ft.      20 ft.      40 ft.



Image Source: Google Earth; June 2021  
Projection: WGS 84 UTM Zone 13 North



DATE: March 13, 2024

DESIGNED BY: C. Hamlin

DRAWN BY: J. Marcus



**Tasman, Inc.**  
6855 W. 119<sup>th</sup> Ave.  
Broomfield, CO 80020

**PDC Energy, Inc. (69175) – DJ Basin**  
**Former Merritt Combined Flowlines**  
NWNE, Section 9, Township 6 North, Range 66 West  
Weld County, Colorado

SOIL SAMPLE  
LOCATION MAP  
(FLOWLINE)

FIGURE  
2



DATE:	March 13, 2024
DESIGNED BY:	C. Hamlin
DRAWN BY:	J. Marcus

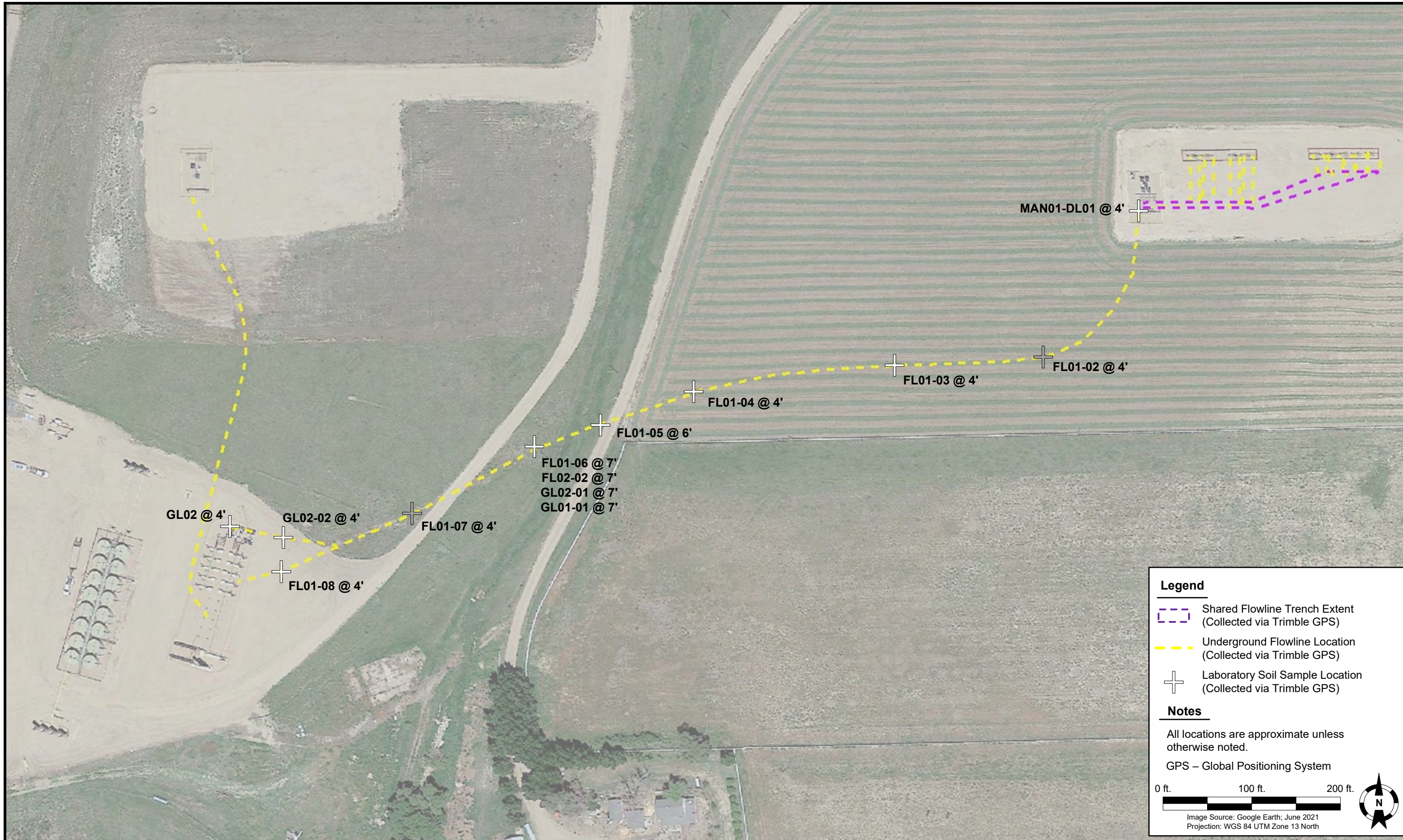


**Tasman, Inc.**  
 6855 W. 119<sup>th</sup> Ave.  
 Broomfield, CO 80020

**PDC Energy, Inc. (69175) – DJ Basin**  
**Former Merritt Combined Wellheads**  
 NWNE, Section 9, Township 6 North, Range 66 West  
 Weld County, Colorado

SOIL SAMPLE  
 LOCATION MAP  
 (MANIFOLDS)

FIGURE  
 3



DATE: March 26, 2024

DESIGNED BY: C. Hamlin

DRAWN BY: J. Hestmark



**Tasman, Inc.**  
6855 W. 119<sup>th</sup> Ave.  
Broomfield, CO 80020

**PDC Energy, Inc. (69175) – DJ Basin**  
**Former Merritt Combined Wellheads**  
NWNE, Section 9, Township 6 North, Range 66 West  
Weld County, Colorado

**SOIL SAMPLE**  
**LOCATION MAP**  
**(FLOWLINES)**

**FIGURE**  
**4**