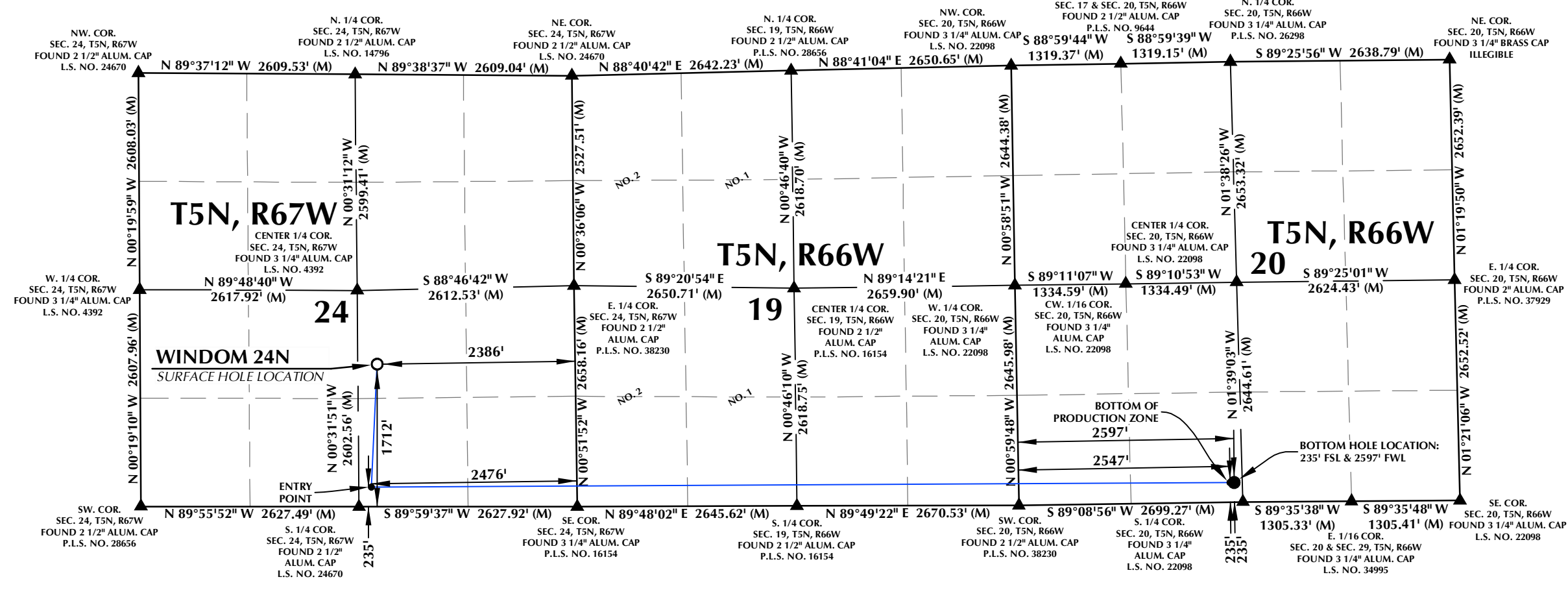



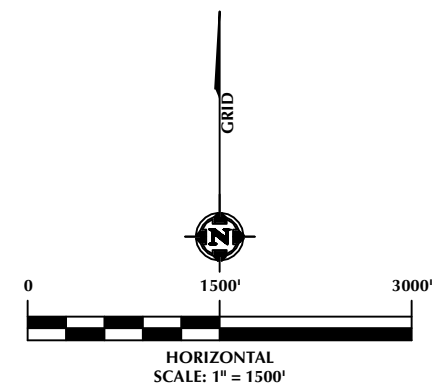
K:\ENERGY\RESOURCES\2018\18-55-WINDOM-CHOPPER\_DSU\_207\_8\_-208-T5N\_R67W\_SEC\_24\PLATS\WINDOM\WINDOM 13-24.dwg, 2/22/2024 7:45:19 AM, smiller



**SURFACE HOLE LOCATION: NAD 83**  
**GROUND ELEVATION= 5003.2'**  
**LATITUDE= 40.382522°**  
**LONGITUDE= -104.840708°**  
**ENTRY POINT: NAD 83**  
**LATITUDE= 40.378468°**  
**LONGITUDE= -104.840990°**  
**BOTTOM OF PRODUCTION ZONE: NAD 83**  
**LATITUDE= 40.378403°**  
**LONGITUDE= -104.803881°**  
**BOTTOM HOLE LOCATION: NAD 83**  
**LATITUDE= 40.378403°**  
**LONGITUDE= -104.803701°**


**CERTIFICATE OF SURVEYOR:**  
 THIS IS TO CERTIFY THAT THE ABOVE PLAT WAS PREPARED FROM FIELD NOTES OF ACTUAL SURVEYS MADE BY ME OR UNDER MY SUPERVISION AND THAT THE SAME ARE TRUE AND CORRECT TO THE BEST OF MY KNOWLEDGE AND BELIEF. THIS CERTIFICATE DOES NOT REPRESENT A LAND SURVEY PLAT OR IMPROVEMENT SURVEY PLAT AS DEFINED BY C.R.S. 38-51-102 AND CANNOT BE RELIED UPON TO DETERMINE OWNERSHIP.  
  
 RANDALL K. FRENCH 3/1/24  
 PROFESSIONAL LAND SURVEYOR  
 COLORADO REGISTRATION NUMBER 38512  
 NOTICE:  
 ACCORDING TO COLORADO STATE LAW YOU MUST COMMENCE ANY LEGAL ACTION BASED UPON ANY DEFECT IN THIS SURVEY WITHIN THREE YEARS AFTER YOU FIRST DISCOVER SUCH DEFECT. IN NO EVENT MAY ANY ACTION BASED UPON ANY DEFECT IN THIS SURVEY BE COMMENCED MORE THAN TEN YEARS FROM THE DATE ON THE CERTIFICATION SHOWN HEREON.

- NOTES:**
- ▲ INDICATES SECTION CORNER.
  - INDICATES CALCULATED CORNER.
  - ELEVATION BASED ON NAVD88 (GEOID12B).
  - BASIS OF BEARINGS DERIVED FROM COLORADO COORDINATE SYSTEM OF 1983, NORTH ZONE.
  - ALL MEASURED DISTANCES ARE GRID.  
COMBINED SCALE FACTOR: .99972442 CALCULATED FROM THE C. 1/4 CORNER OF SECTION 24, T5N, R67W.
  - OPERATOR: RYAN GROVES / PDOP = 1.5
  - WELL FOOTAGES ARE MEASURED AT RIGHT ANGLES TO THE SECTION LINES.




LOVELAND OFFICE  
 6706 North Franklin Avenue  
 Loveland, Colorado 80538  
 Phone 970-776-4331

SHERIDAN OFFICE  
 1095 Saberton Avenue  
 Sheridan, Wyoming 82801  
 Phone 307-674-0609



PDC ENERGY  
 1099 18th Street  
 Granite Tower, Suite 1500  
 Denver, Colorado 80202

On August 7, 2023, Chevron acquired PDC Energy, Inc. ("PDC").  
 PDC is continuing to operate as a wholly owned subsidiary of Chevron.

WELL PAD - WINDOM 5N67W24 1-24			
<b>WINDOM 24N</b> <b>WELL LOCATION CERTIFICATE</b> <b>1712' FSL &amp; 2386' FEL (NWSE) (SURFACE HOLE LOCATION)</b> <b>235' FSL &amp; 2476' FEL (SWSE) (ENTRY POINT)</b> <b>LOCATED IN SECTION 24</b> <b>T5N, R67W, 6TH P.M.</b> <b>235' FSL &amp; 2547' FWL (SESW) (BOTTOM OF PRODUCTION ZONE)</b> <b>235' FSL &amp; 2597' FWL (SESW) (BOTTOM HOLE LOCATION)</b> <b>LOCATED IN SECTION 20</b> <b>T5N, R66W, 6TH P.M.</b> <b>WELD COUNTY, COLORADO</b>			
DRAFTED BY:	SJM	CHECKED BY:	RKF
DATE DRAFTED:	10/30/21	DATE SURVEYED:	2/12/24
REVISED:	3/1/24	FILE NAME:	18-55