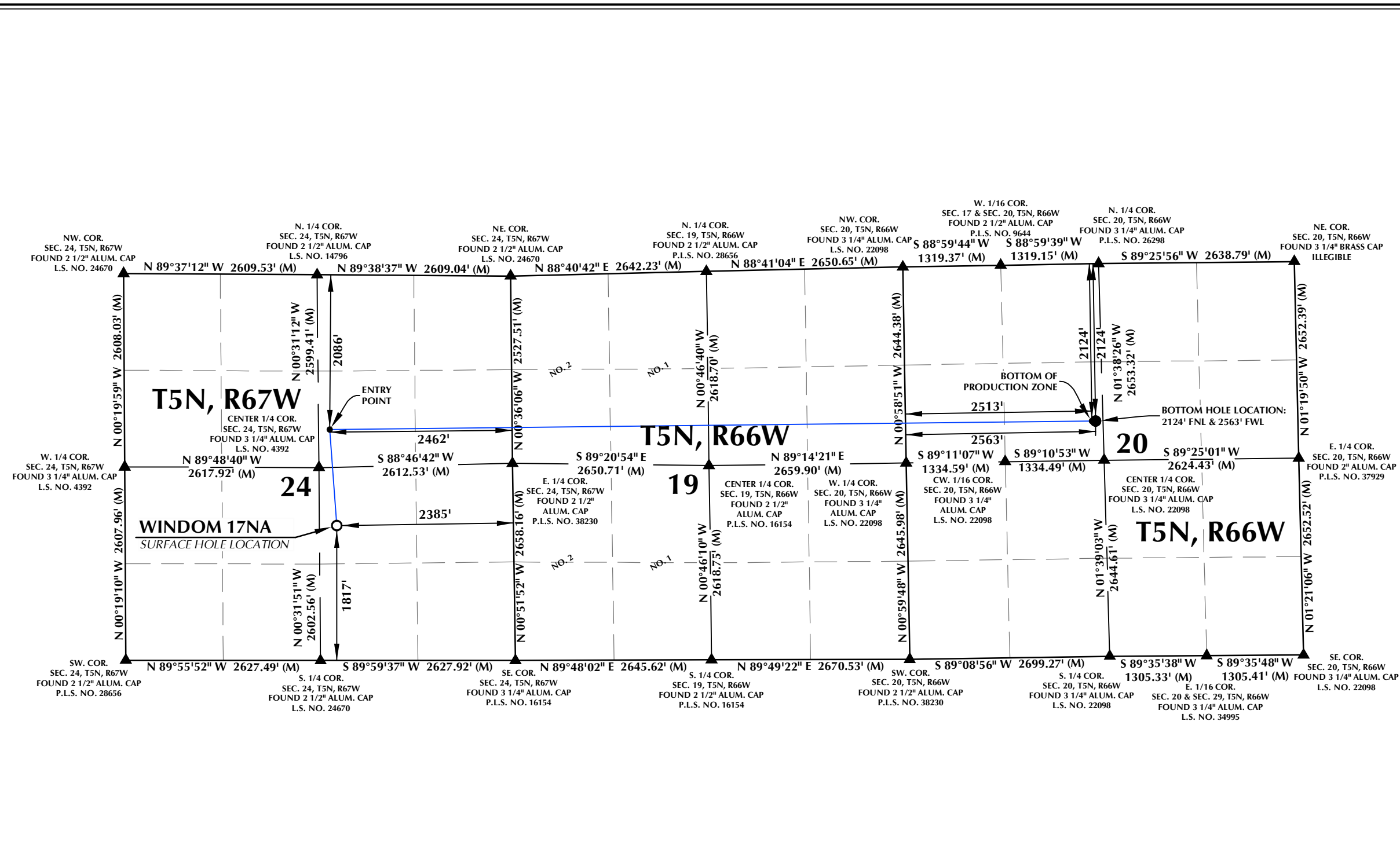


K:\SYNERGY\RESOURCES\20181018\2018_55_WINDOM_CHOPPER_DSU_207_8_208_T5N_R67W_SEC_24\PLATS\WINDOM\WINDOM 13-24.dwg, 2/22/2024 7:45:04 AM, smiller



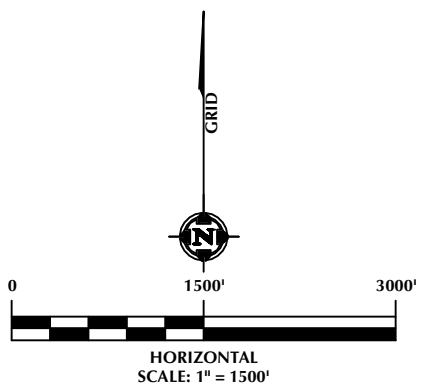
SURFACE HOLE LOCATION: NAD 83
GROUND ELEVATION= 5000.2'
LATITUDE= 40.382810°
LONGITUDE= -104.840705°
ENTRY POINT: NAD 83
LATITUDE= 40.386372°
LONGITUDE= -104.841009°
BOTTOM OF PRODUCTION ZONE: NAD 83
LATITUDE= 40.386468°
LONGITUDE= -104.804102°
BOTTOM HOLE LOCATION: NAD 83
LATITUDE= 40.386468°
LONGITUDE= -104.803922°

CERTIFICATE OF SURVEYOR:
 THIS IS TO CERTIFY THAT THE ABOVE PLAT WAS PREPARED FROM FIELD NOTES OF ACTUAL SURVEYS MADE BY ME OR UNDER MY SUPERVISION AND THAT THE SAME ARE TRUE AND CORRECT TO THE BEST OF MY KNOWLEDGE AND BELIEF. THIS CERTIFICATE DOES NOT REPRESENT A LAND SURVEY PLAT OR IMPROVEMENT SURVEY PLAT AS DEFINED BY C.R.S. 38-51-102 AND CANNOT BE RELIED UPON TO DETERMINE OWNERSHIP.

Randall K. French
 RANDALL K. FRENCH
 PROFESSIONAL LAND SURVEYOR
 COLORADO REGISTRATION NUMBER 38512
 3/1/24

NOTICE:
 ACCORDING TO COLORADO STATE LAW YOU MUST COMMENCE ANY LEGAL ACTION BASED UPON ANY DEFECT IN THIS SURVEY WITHIN THREE YEARS AFTER YOU FIRST DISCOVER SUCH DEFECT. IN NO EVENT MAY ANY ACTION BASED UPON ANY DEFECT IN THIS SURVEY BE COMMENCED MORE THAN TEN YEARS FROM THE DATE ON THE CERTIFICATION SHOWN HEREON.

- NOTES:**
- ▲ INDICATES SECTION CORNER.
 - INDICATES CALCULATED CORNER.
 - ELEVATION BASED ON NAVD88 (GEOID12B).
 - BASIS OF BEARINGS DERIVED FROM COLORADO COORDINATE SYSTEM OF 1983, NORTH ZONE.
 - ALL MEASURED DISTANCES ARE GRID.
 COMBINED SCALE FACTOR: .99972442 CALCULATED FROM THE C. 1/4 CORNER OF SECTION 24, T5N, R67W.
 - OPERATOR: RYAN GROVES / PDOP = 1.5
 - WELL FOOTAGES ARE MEASURED AT RIGHT ANGLES TO THE SECTION LINES.



609 CONSULTING, LLC

LOVELAND OFFICE
 6706 North Franklin Avenue
 Loveland, Colorado 80538
 Phone 970-776-4331

SHERIDAN OFFICE
 1095 Saberton Avenue
 Sheridan, Wyoming 82801
 Phone 307-674-0609

Chevron

PDC ENERGY
 1099 18th Street
 Granite Tower, Suite 1500
 Denver, Colorado 80202

On August 7, 2023, Chevron acquired PDC Energy, Inc. ("PDC").
 PDC is continuing to operate as a wholly owned subsidiary of Chevron.

WELL PAD - WINDOM 5N67W24 1-24			
WINDOM 17NA WELL LOCATION CERTIFICATE 1817' FSL & 2385' FEL (NWSE) (SURFACE HOLE LOCATION) 2086' FNL & 2462' FEL (SWNE) (ENTRY POINT) LOCATED IN SECTION 24 T5N, R67W, 6TH P.M. 2124' FNL & 2513' FWL (SENW) (BOTTOM OF PRODUCTION ZONE) 2124' FNL & 2563' FWL (SEW) (BOTTOM HOLE LOCATION) LOCATED IN SECTION 20 T5N, R66W, 6TH P.M. WELD COUNTY, COLORADO			
DRAFTED BY:	SJM	CHECKED BY:	RKF
DATE DRAFTED:	10/30/21	DATE SURVEYED:	2/12/24
REVISED:	3/1/24	FILE NAME:	18-55