

LOCATION PICTURES

REMORA 6 PAD
BLINK 4-63 6-32-1
BISON OIL & GAS IV



VIEW NORTH ①



VIEW SOUTH ②



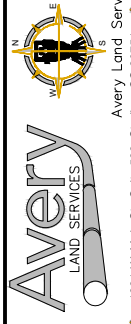
VIEW WEST ③



VIEW EAST ④



PICTURE VIEW LOCATIONS



Avery Land Services
1321 W. Main St., Suite 522, Sterling, CO 80751

LOCATION PICTURES

REMORA 6 PAD
LOCATION DESCRIPTION:
SW 1/4 OF NW 1/4 (ALSO REFERRED TO AS LOT 3)
OF SECTION 6, T-4-S, R-63-W, 6th P.M.
ARAPAHOE COUNTY, COLORADO

Revision	Date	Description
REV-1	3/12/2024	South & West Pictures Adjusted

Field Date: 8/25/2023

Drawing Date: 8/29/23

Drawn By: SRC

Sheet Number: 1 OF 1