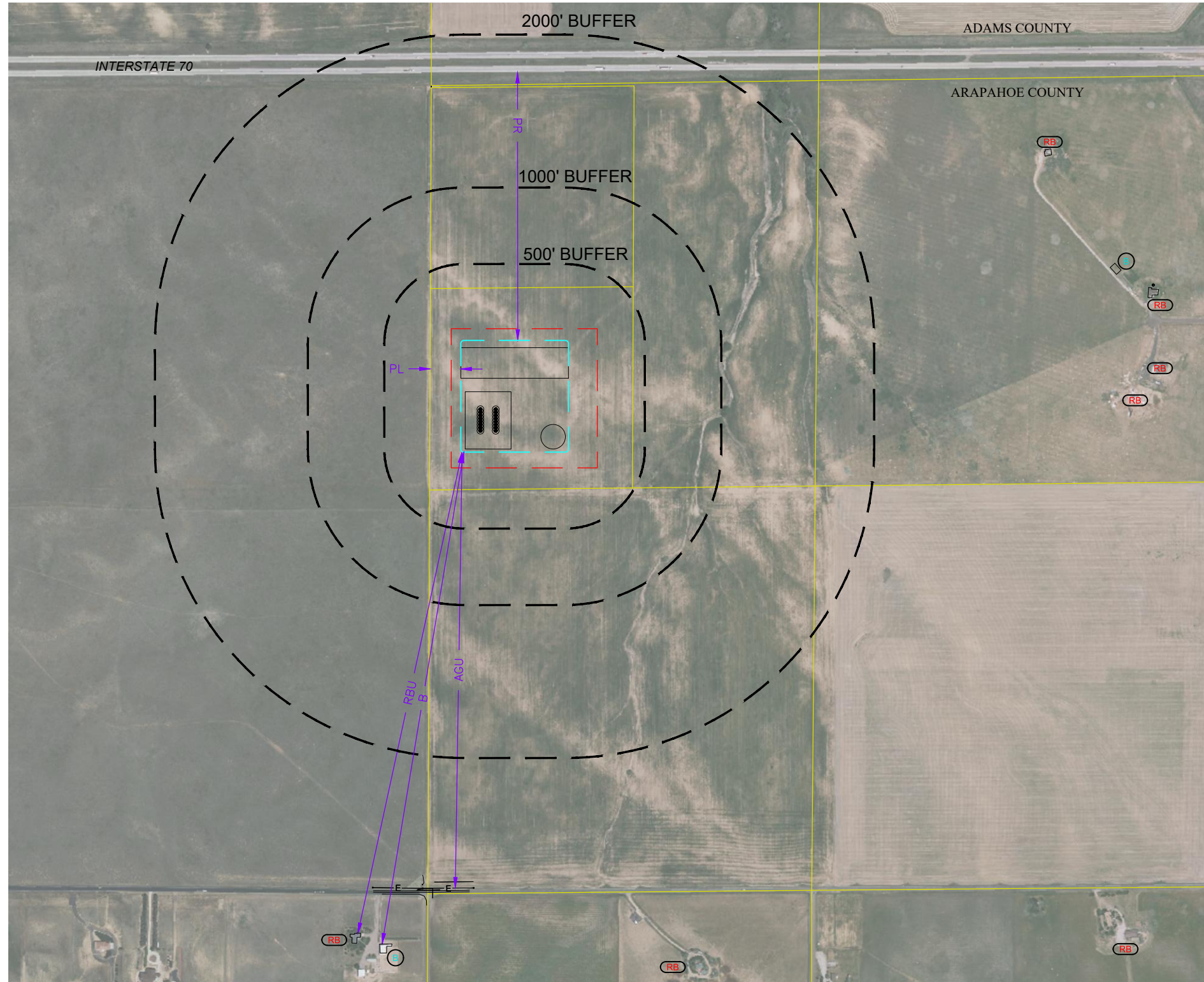


CULTURAL ITEMS MAP
 REMORA 6 PAD
 BISON OIL & GAS IV



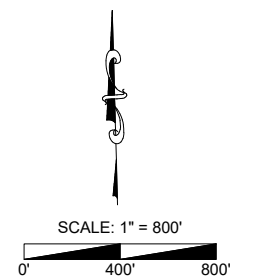
LEGEND

- PARCEL LINE
- WORKING PAD SURFACE
- OIL AND GAS LOCATION
- PROPOSED WELL
- BUILDING
- BUILDING UNIT
- RESIDENTIAL BUILDING

NOTE:
 VISIBLE IMPROVEMENTS SHOWN AND LISTED HEREON MAY HAVE BEEN OBTAINED FROM THE AERIAL PHOTO AND OTHER PUBLICLY AVAILABLE DATA. THE ACCURACY OF ANY AND ALL DATA HAS NOT BEEN VERIFIED BY AVERY LAND SERVICES, LLC. EXISTING CONDITIONS MAY DIFFER FROM WHAT IS DEPICTED HEREON.

	MEASURED FROM THE NEAREST	PROPOSED WELL HEAD	EDGE OF WORKING PAD
B	BUILDING	±3425'	±3268'
BU	BUILDING UNIT	5280'+	5280'+
RB	RESIDENTIAL BUILDING	±3383'	±3223'
HOBUS	HIGH OCCUPANCY BUILDING UNIT	5280'+	5280'+
S	SCHOOL FACILITY	5280'+	5280'+
DOAA	DESIGNATED OUTSIDE ACTIVITY AREA	5280'+	5280'+
DIC	DISPROPORTIONATELY IMPACTED COMMUNITY BOUNDARY	5280'+	5280'+
DIC/BU/ RBU/ HOBUS/ S	BUILDING UNIT/RESIDENTIAL BUILDING UNIT/HIGH OCCUPANCY BUILDING UNIT/SCHOOL FACILITY WITHIN DISPROPORTIONATELY IMPACTED COMMUNITY BOUNDARY	5280'+	5280'+
CC	CHILD CARE CENTER	5280'+	5280'+
PR	PUBLIC ROAD (I 70)	±2200'	±1754'
AGU	ABOVE GROUND UTILITY (OVERHEAD POWER)	±2990'	±2850'
RR	RAILROAD	5280'+	5280'+
PL	PROPERTY LINE	±331'	±202'

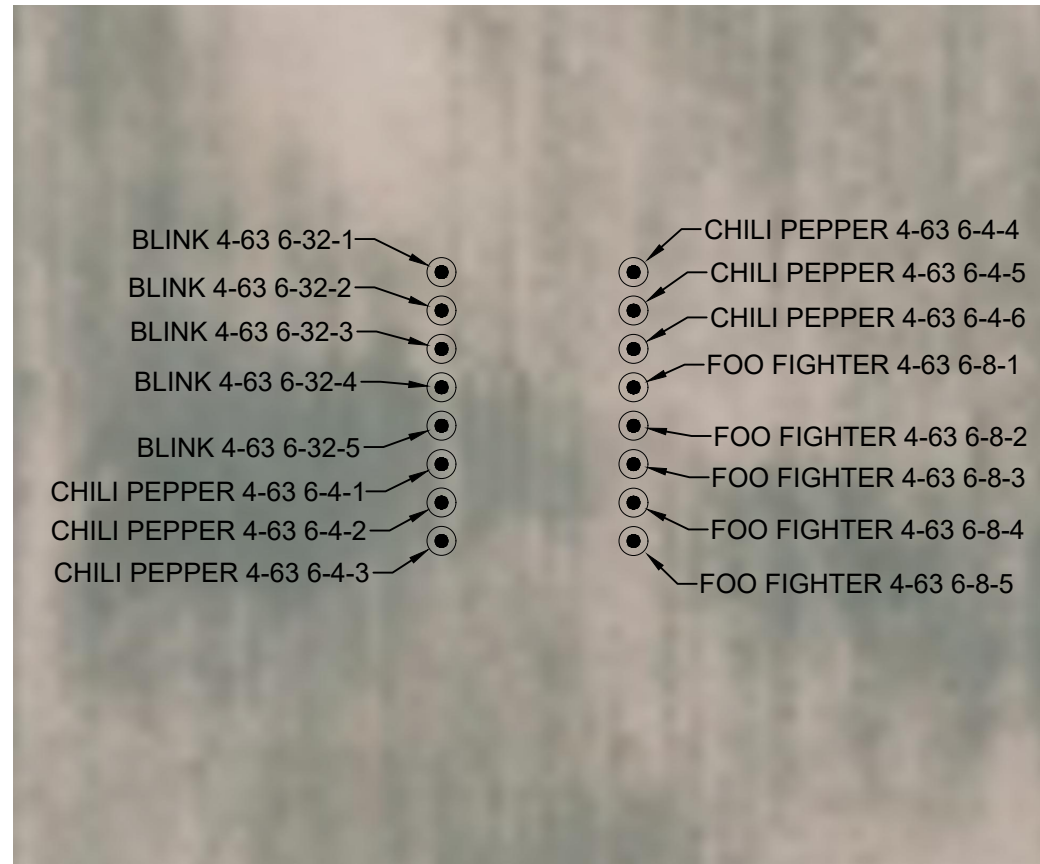
WORKING PAD RADII	0-500 FEET	501-1000 FEET	1001-2000 FEET
BUILDING	0	0	0
BUILDING UNIT	0	0	0
RESIDENTIAL BUILDING	0	0	0
HIGH OCCUPANCY BUILDING UNIT	0	0	0
SCHOOL PROPERTIES	0	0	0
SCHOOL FACILITY	0	0	0
DESIGNATED OUTDOOR ACTIVITY AREA	0	0	0



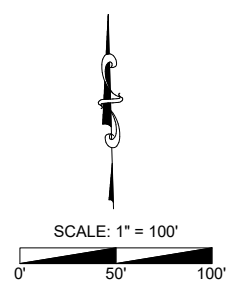
CULTURAL ITEMS MAP
 REMORA 6 PAD
 LOCATION DESCRIPTION:
 SW 1/4 OF NW 1/4 OF (ALSO REFERRED TO AS LOT-3)
 OF SECTION 6 T-4-S; R-63-W, 6th P.M.
 ARAPAHOE COUNTY, COLORADO

Description	Updated Nearest Residential Building & Building
Date	9/28/23
Revision	1
Field Date:	8/25/2023
Drawing Date:	9/28/23
Drawn By:	SRC
Sheet Number:	1 OF 2

CULTURAL ITEMS MAP
 REMORA 6 PAD
 BISON OIL & GAS IV



MEASURED FROM NEAREST	BLINK 4-63 6-32-1	BLINK 4-63 6-32-2	BLINK 4-63 6-32-3	BLINK 4-63 6-32-4	BLINK 4-63 6-32-5	CHILI PEPPER 4-63 6-4-1	CHILI PEPPER 4-63 6-4-2	CHILI PEPPER 4-63 6-4-3	CHILI PEPPER 4-63 6-4-4	CHILI PEPPER 4-63 6-4-5	CHILI PEPPER 4-63 6-4-6	FOO FIGHTER 4-63 6-8-1	FOO FIGHTER 4-63 6-8-2	FOO FIGHTER 4-63 6-8-3	FOO FIGHTER 4-63 6-8-4	FOO FIGHTER 4-63 6-8-5
RESIDENTIAL BUILDING	±3520' SW	±3500' SW	±3481' SW	±3461' SW	±3442' SW	±3422' SW	±3403' SW	±3384' SW	±3544' SW	±3525' SW	±3505' SW	±3486' SW	±3467' SW	±3447' SW	±3428' SW	±3409' SW
BUILDING	±3555' SW	±3535' SW	±3515' SW	±3496' SW	±3476' SW	±3456' SW	±3437' SW	±3417' SW	±3547' SW	±3555' SW	±3535' SW	±3515' SW	±3496' SW	±3476' SW	±3457' SW	±3437' SW
BUILDING UNIT	5280'+	5280'+	5280'+	5280'+	5280'+	5280'+	5280'+	5280'+	5280'+	5280'+	5280'+	5280'+	5280'+	5280'+	5280'+	5280'+
PUBLIC ROAD (INTERSTATE 70)	±2195' N	±2215' N	±2235' N	±2255' N	±2275' N	±2295' N	±2315' N	±2335' N	±2195' N	±2215' N	±2235' N	±2255' N	±2275' N	±2295' N	±2315' N	±2335' N
ABOVE GROUND UTILITY	±2990' S	±3010' S	±3030' S	±3050' S	±3070' S	±3090' S	±3110' S	±3130' S	±2990' S	±3010' S	±3030' S	±3050' S	±3070' S	±3090' S	±3110' S	±3130' S
RAILROAD	5280'+	5280'+	5280'+	5280'+	5280'+	5280'+	5280'+	5280'+	5280'+	5280'+	5280'+	5280'+	5280'+	5280'+	5280'+	5280'+
PROPERTY LINE	±331' W	±331' W	±331' W	±331' W	±331' W	±331' W	±331' W	±331' W	±431' W	±431' W	±431' W	±431' W	±431' W	±431' W	±431' W	±431' W



CULTURAL ITEMS MAP
 REMORA 6 PAD
 LOCATION DESCRIPTION:
 SW ¼ OF NW ¼ OF (ALSO REFERRED TO AS LOT-3)
 OF SECTION 6 T-4-S, R-63-W, 6th P.M.,
 ARAPAHOE COUNTY, COLORADO

Description	Updated Nearest Residential Building & Building
Date	9/28/23
Revision	1
Field Date:	8/25/2023
Drawing Date:	9/28/23
Drawn By:	SRC
Sheet Number:	2 OF 2