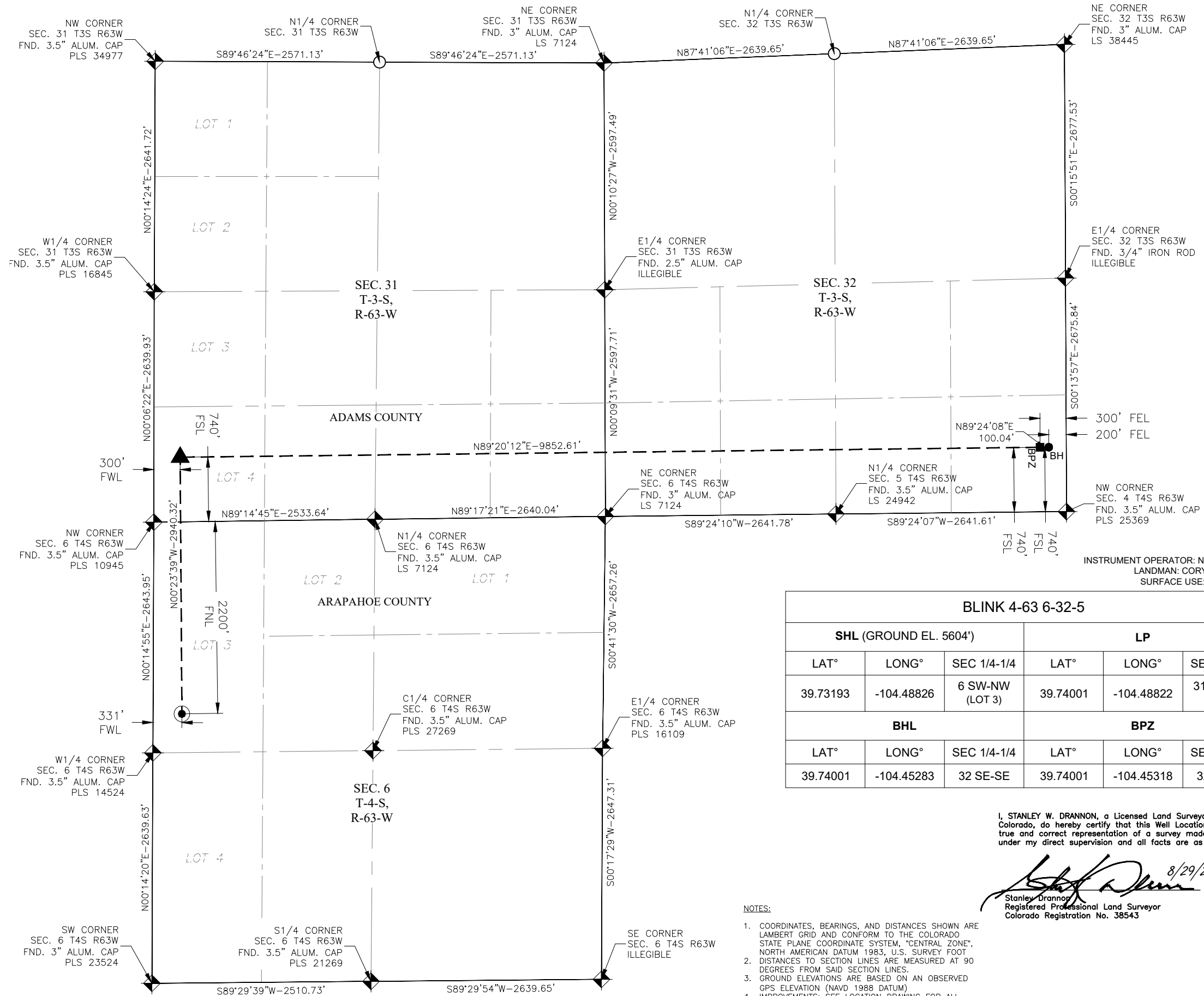
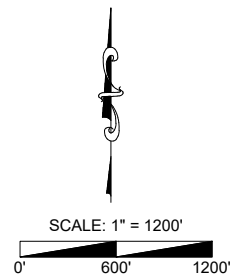


WELL LOCATION CERTIFICATE

REMORA 6 PAD
BLINK 4-63 6-32-5
BISON OIL & GAS IV



PDOP: 1.2
INSTRUMENT OPERATOR: NATHAN NASIF
LANDMAN: CORY NEIGHBORS
SURFACE USE: RANGELAND

BLINK 4-63 6-32-5					
SHL (GROUND EL. 5604')			LP		
LAT°	LONG°	SEC 1/4-1/4	LAT°	LONG°	SEC 1/4-1/4
39.73193	-104.48826	6 SW-NW (LOT 3)	39.74001	-104.48822	31 SW-SW (LOT 4)
BHL			BPZ		
LAT°	LONG°	SEC 1/4-1/4	LAT°	LONG°	SEC 1/4-1/4
39.74001	-104.45283	32 SE-SE	39.74001	-104.45318	32 SE-SE

I, STANLEY W. DRANNON, a Licensed Land Surveyor in the State of Colorado, do hereby certify that this Well Location Certificate is a true and correct representation of a survey made on the ground under my direct supervision and all facts are as shown herein.

Stanley W. Drannon 8/29/2023
Stanley Drannon
Registered Professional Land Surveyor
Colorado Registration No. 38543



NOTES:

- COORDINATES, BEARINGS, AND DISTANCES SHOWN ARE LAMBERT GRID AND CONFORM TO THE COLORADO STATE PLANE COORDINATE SYSTEM, "CENTRAL ZONE", NORTH AMERICAN DATUM 1983, U.S. SURVEY FOOT
- DISTANCES TO SECTION LINES ARE MEASURED AT 90 DEGREES FROM SAID SECTION LINES.
- GROUND ELEVATIONS ARE BASED ON AN OBSERVED GPS ELEVATION (NAVD 1988 DATUM)
- IMPROVEMENTS: SEE LOCATION DRAWING FOR ALL VISIBLE IMPROVEMENTS.
- THIS MAP DOES NOT REPRESENT A BOUNDARY SURVEY.

LEGEND

- ALIQUOT MONUMENT AS DESCRIBED
- CALCULATED POSITION
- SURFACE HOLE LOCATION (SHL)
- BOTTOM HOLE LOCATION (BHL)
- LANDING POINT (LP)
- BASE PRODUCTION ZONE (BPZ)

WELL LOCATION CERTIFICATE

REMORA 6 PAD
LOCATION DESCRIPTION:
SW 1/4 OF NW 1/4 OF (ALSO REFERRED TO AS LOT-3)
OF SECTION 6 T-4-S, R-63-W, 6th P.M.I.
ARAPAHOE COUNTY, COLORADO

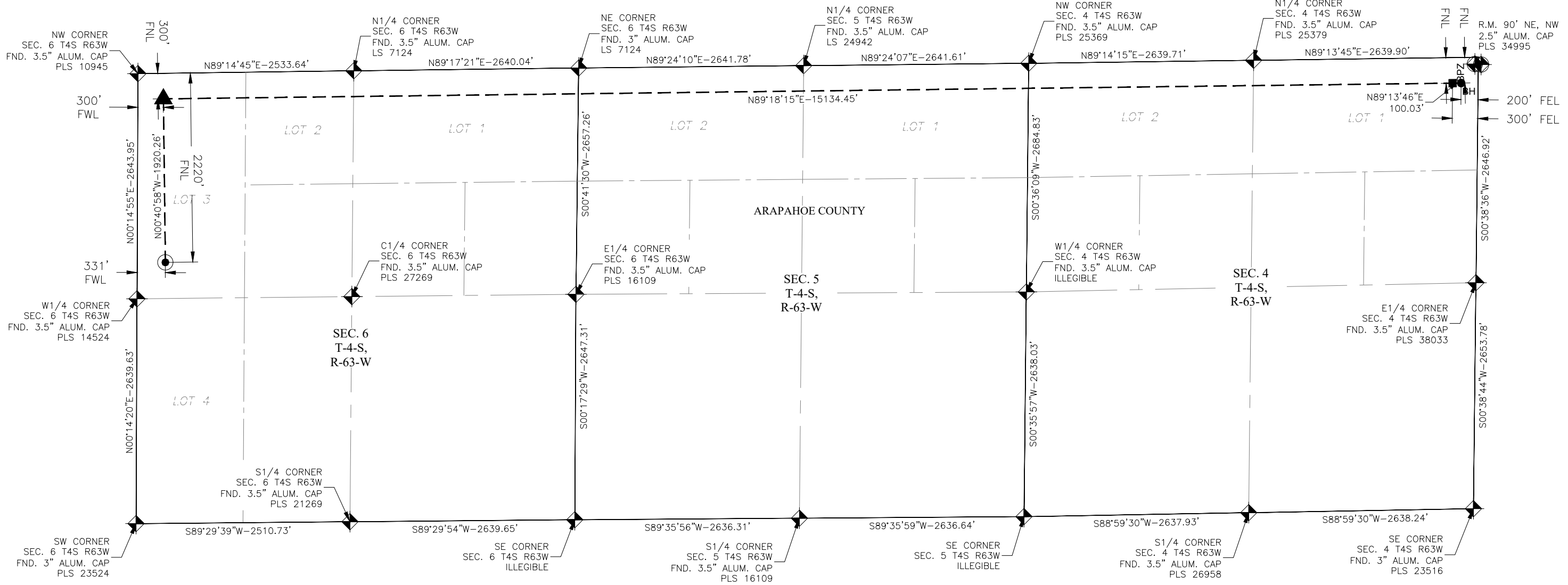
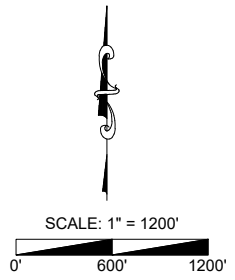
Revision	Date	Description



Avery Land Services
1321 W. Main St., Suite 522, Sterling, CO 80751

WELL LOCATION CERTIFICATE

REMORA 6 PAD
CHILI PEPPER 4-63 6-4-1
BISON OIL & GAS IV



- LEGEND**
- ◆ - ALIQUOT MONUMENT AS DESCRIBED
 - - CALCULATED POSITION
 - - SURFACE HOLE LOCATION (SHL)
 - - BOTTOM HOLE LOCATION (BHL)
 - ▲ - LANDING POINT (LP)
 - - BASE PRODUCTION ZONE (BPZ)

- NOTES:**
1. COORDINATES, BEARINGS, AND DISTANCES SHOWN ARE LAMBERT GRID AND CONFORM TO THE COLORADO STATE PLANE COORDINATE SYSTEM, "CENTRAL ZONE", NORTH AMERICAN DATUM 1983, U.S. SURVEY FOOT
 2. DISTANCES TO SECTION LINES ARE MEASURED AT 90 DEGREES FROM SAID SECTION LINES.
 3. GROUND ELEVATIONS ARE BASED ON AN OBSERVED GPS ELEVATION (NAVD 1988 DATUM)
 4. IMPROVEMENTS: SEE LOCATION DRAWING FOR ALL VISIBLE IMPROVEMENTS.
 5. THIS MAP DOES NOT REPRESENT A BOUNDARY SURVEY.

CHILI PEPPER 4-63 6-4-1					
SHL (GROUND EL. 5604')			LP		
LAT°	LONG°	SEC 1/4-1/4	LAT°	LONG°	SEC 1/4-1/4
39.73188	-104.48826	6 SW-NW (LOT 3)	39.73715	-104.48827	6 NW-NW (LOT 3)
BHL			BPZ		
LAT°	LONG°	SEC 1/4-1/4	LAT°	LONG°	SEC 1/4-1/4
39.73718	-104.43410	4 NE-NE (LOT 1)	39.73718	-104.43445	4 NE-NE (LOT 1)

PDOP: 1.4
INSTRUMENT OPERATOR: NATHAN NASIF
LANDMAN: CORY NEIGHBORS
SURFACE USE: RANGELAND

I, STANLEY W. DRANNON, a Licensed Land Surveyor in the State of Colorado, do hereby certify that this Well Location Certificate is a true and correct representation of a survey made on the ground under my direct supervision and all facts are as shown herein.

Stanley W. Drannon 8/29/2023
Stanley W. Drannon
Registered Professional Land Surveyor
Colorado Registration No. 38543



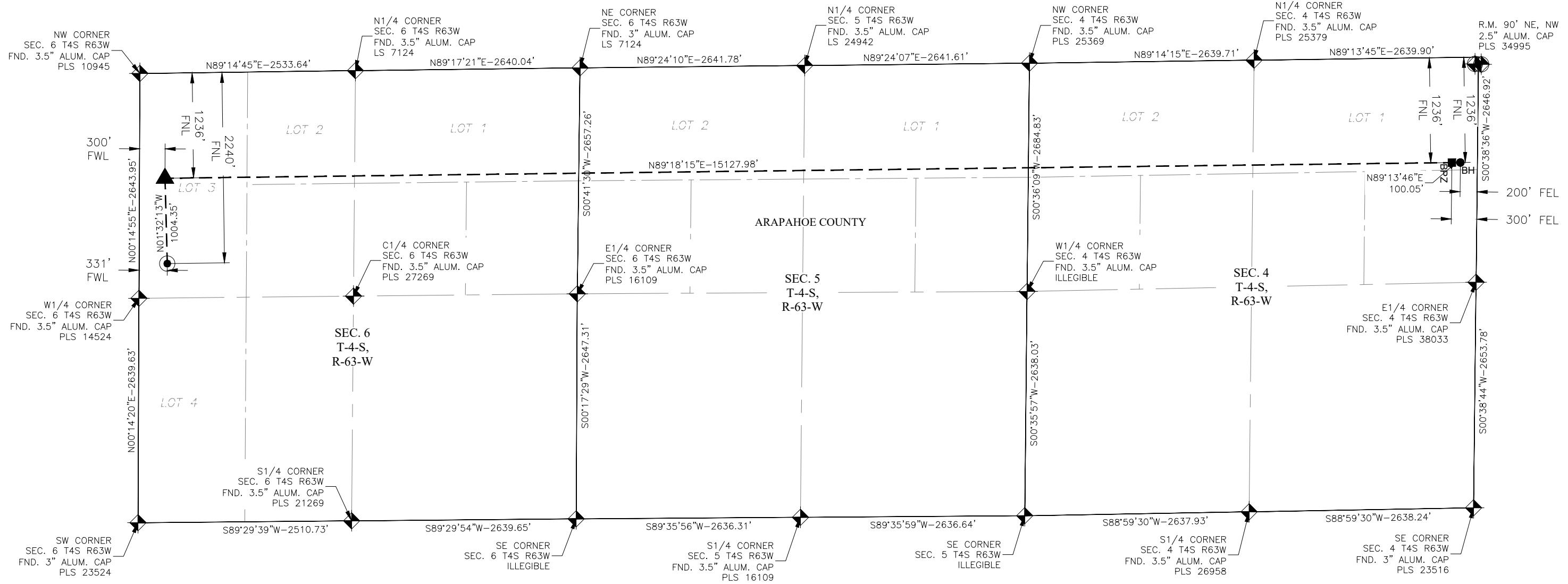
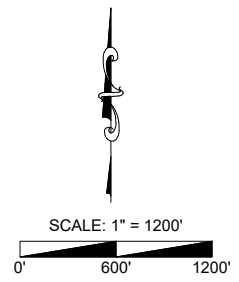
WELL LOCATION CERTIFICATE
REMORA 6 PAD
LOCATION DESCRIPTION:
SW 1/4 OF NW 1/4 OF (ALSO REFERRED TO AS LOT-3)
OF SECTION 6 T-4-S, R-63-W, 6th P.M.I.
ARAPAHOE COUNTY, COLORADO

Revision	Date	Description

Field Date: 8/25/2023
Drawing Date: 8/29/23
Drawn By: SRC
Sheet Number: 1 OF 1

WELL LOCATION CERTIFICATE

REMORA 6 PAD
CHILI PEPPER 4-63 6-4-2
BISON OIL & GAS IV



- LEGEND**
- ◆ - ALIQUOT MONUMENT AS DESCRIBED
 - - CALCULATED POSITION
 - - SURFACE HOLE LOCATION (SHL)
 - BH - BOTTOM HOLE LOCATION (BHL)
 - ▲ - LANDING POINT (LP)
 - BPZ - BASE PRODUCTION ZONE (BPZ)

- NOTES:**
1. COORDINATES, BEARINGS, AND DISTANCES SHOWN ARE LAMBERT GRID AND CONFORM TO THE COLORADO STATE PLANE COORDINATE SYSTEM, "CENTRAL ZONE", NORTH AMERICAN DATUM 1983, U.S. SURVEY FOOT
 2. DISTANCES TO SECTION LINES ARE MEASURED AT 90 DEGREES FROM SAID SECTION LINES.
 3. GROUND ELEVATIONS ARE BASED ON AN OBSERVED GPS ELEVATION (NAVD 1988 DATUM)
 4. IMPROVEMENTS: SEE LOCATION DRAWING FOR ALL VISIBLE IMPROVEMENTS.
 5. THIS MAP DOES NOT REPRESENT A BOUNDARY SURVEY.

CHILI PEPPER 4-63 6-4-2					
SHL (GROUND EL. 5604')			LP		
LAT°	LONG°	SEC 1/4-1/4	LAT°	LONG°	SEC 1/4-1/4
39.73182	-104.48826	6 SW-NW (LOT 3)	39.73458	-104.48832	6 NW-NW (LOT 3)
BHL			BPZ		
LAT°	LONG°	SEC 1/4-1/4	LAT°	LONG°	SEC 1/4-1/4
39.73461	-104.43417	4 NE-NE (LOT 1)	39.73461	-104.43453	4 NE-NE (LOT 1)

PDOP: 1.5
INSTRUMENT OPERATOR: NATHAN NASIF
LANDMAN: CORY NEIGHBORS
SURFACE USE: RANGELAND

I, STANLEY W. DRANNON, a Licensed Land Surveyor in the State of Colorado, do hereby certify that this Well Location Certificate is a true and correct representation of a survey made on the ground under my direct supervision and all facts are as shown herein.

Stanley W. Drannon 8/29/2023
Stanley Drannon
Registered Professional Land Surveyor
Colorado Registration No. 38543



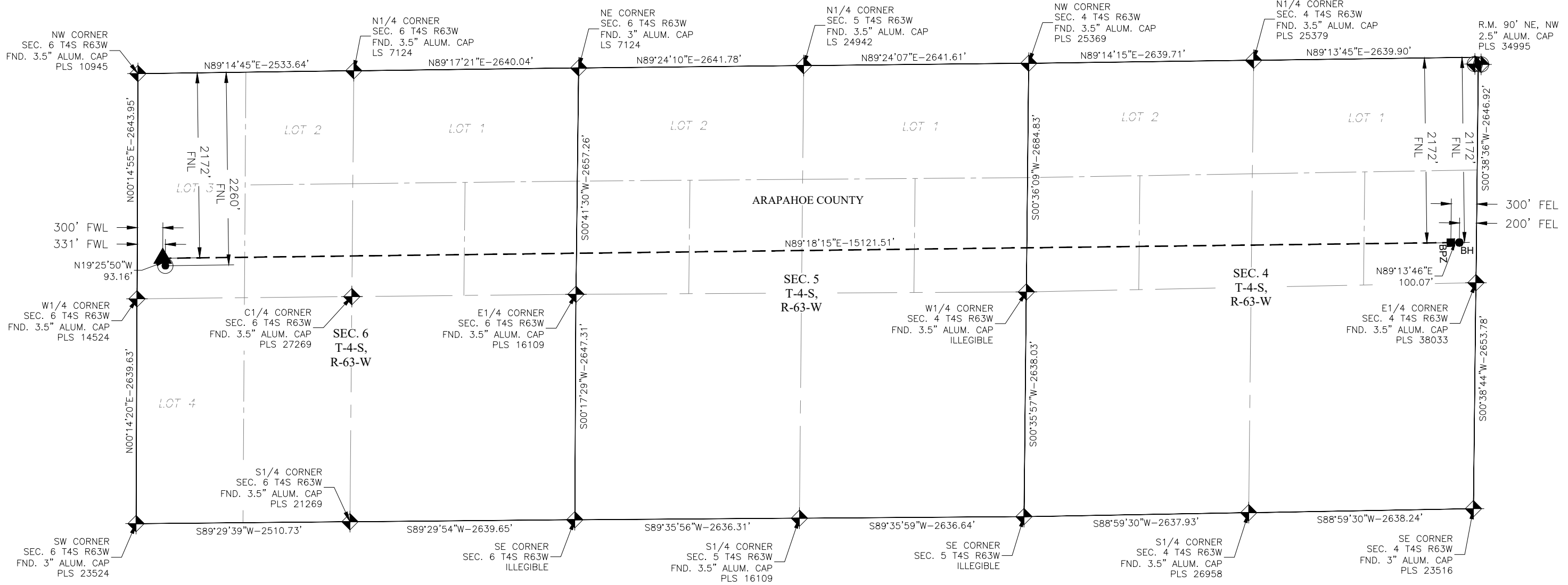
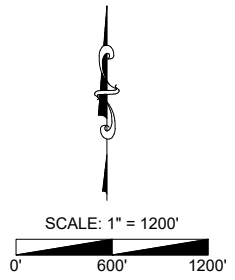
WELL LOCATION CERTIFICATE
REMORA 6 PAD
LOCATION DESCRIPTION:
SW 1/4 OF NW 1/4 OF (ALSO REFERRED TO AS LOT-3)
OF SECTION 6 T-4-S, R-63-W, 6th P.M.
ARAPAHOE COUNTY, COLORADO

Revision	Date	Description

Field Date: 8/25/2023
Drawing Date: 8/29/23
Drawn By: SRC
Sheet Number: 1 OF 1

WELL LOCATION CERTIFICATE

REMORA 6 PAD
CHILI PEPPER 4-63 6-4-3
BISON OIL & GAS IV



- LEGEND**
- ◆ - ALIQUOT MONUMENT AS DESCRIBED
 - - CALCULATED POSITION
 - - SURFACE HOLE LOCATION (SHL)
 - - BOTTOM HOLE LOCATION (BHL)
 - ▲ - LANDING POINT (LP)
 - - BASE PRODUCTION ZONE (BPZ)

- NOTES:**
1. COORDINATES, BEARINGS, AND DISTANCES SHOWN ARE LAMBERT GRID AND CONFORM TO THE COLORADO STATE PLANE COORDINATE SYSTEM, "CENTRAL ZONE", NORTH AMERICAN DATUM 1983, U.S. SURVEY FOOT
 2. DISTANCES TO SECTION LINES ARE MEASURED AT 90 DEGREES FROM SAID SECTION LINES.
 3. GROUND ELEVATIONS ARE BASED ON AN OBSERVED GPS ELEVATION (NAVD 1988 DATUM)
 4. IMPROVEMENTS: SEE LOCATION DRAWING FOR ALL VISIBLE IMPROVEMENTS.
 5. THIS MAP DOES NOT REPRESENT A BOUNDARY SURVEY.

CHILI PEPPER 4-63 6-4-3					
SHL (GROUND EL. 5604')			LP		
LAT°	LONG°	SEC 1/4-1/4	LAT°	LONG°	SEC 1/4-1/4
39.73177	-104.48826	6 SW-NW (LOT 3)	39.73201	-104.48837	6 SW-NW (LOT 3)
BHL			BPZ		
LAT°	LONG°	SEC 1/4-1/4	LAT°	LONG°	SEC 1/4-1/4
39.73204	-104.43425	4 SE-NE	39.73204	-104.43461	4 SE-NE

PDOP: 1.5
INSTRUMENT OPERATOR: NATHAN NASIF
LANDMAN: CORY NEIGHBORS
SURFACE USE: RANGELAND

I, STANLEY W. DRANNON, a Licensed Land Surveyor in the State of Colorado, do hereby certify that this Well Location Certificate is a true and correct representation of a survey made on the ground under my direct supervision and all facts are as shown herein.

Stanley W. Drannon 8/29/2023
Stanley Drannon
Registered Professional Land Surveyor
Colorado Registration No. 38543



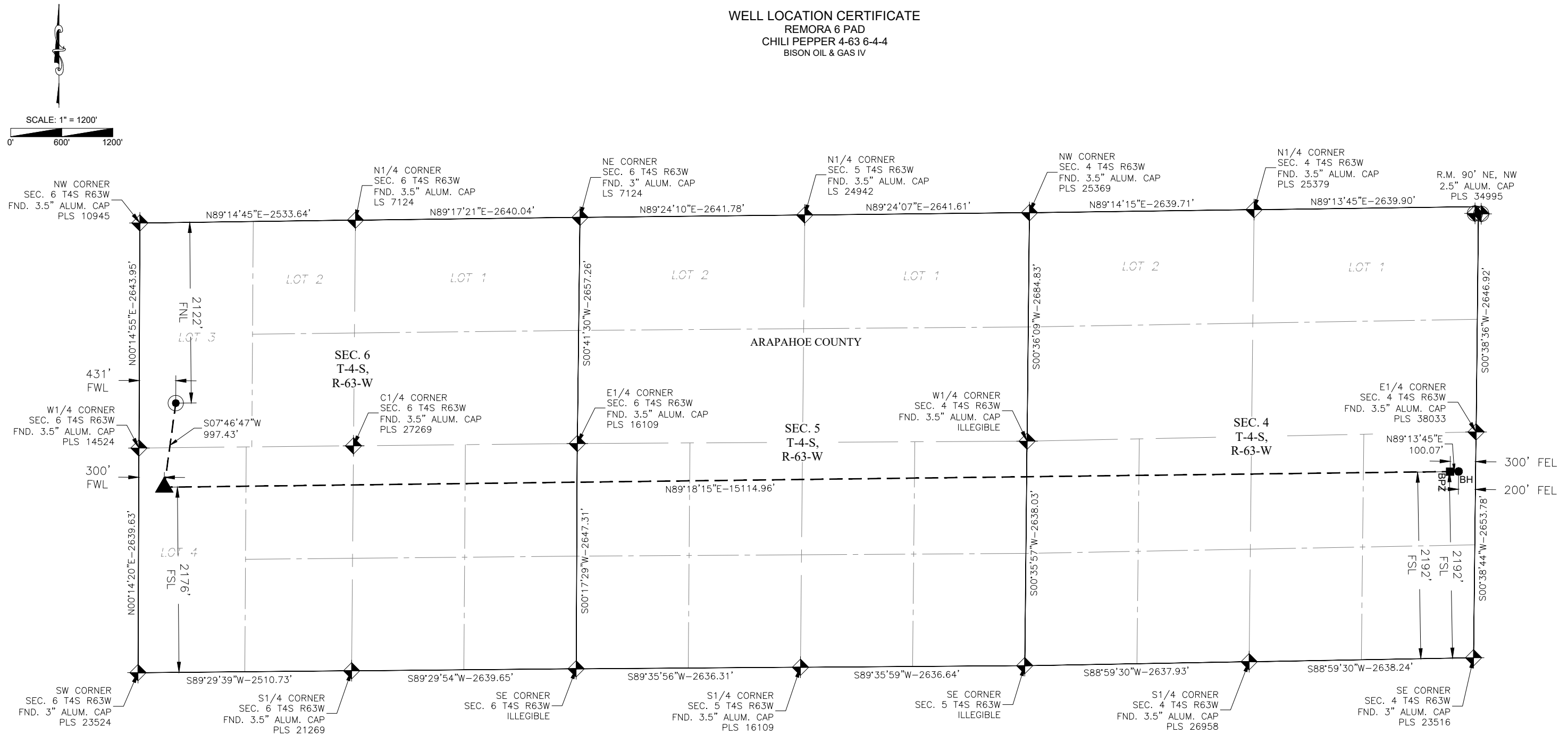
WELL LOCATION CERTIFICATE
REMORA 6 PAD
LOCATION DESCRIPTION:
SW 1/4 OF NW 1/4 OF (ALSO REFERRED TO AS LOT-3)
OF SECTION 6 T-4-S, R-63-W, 6th P.M.
ARAPAHOE COUNTY, COLORADO

Revision	Date	Description

Field Date: 8/25/2023
Drawing Date: 8/29/23
Drawn By: SRC
Sheet Number: 1 OF 1

WELL LOCATION CERTIFICATE

REMORA 6 PAD
CHILI PEPPER 4-63 6-4-4
BISON OIL & GAS IV



- LEGEND**
- ◆ - ALIQUOT MONUMENT AS DESCRIBED
 - - CALCULATED POSITION
 - - SURFACE HOLE LOCATION (SHL)
 - - BOTTOM HOLE LOCATION (BHL)
 - ▲ - LANDING POINT (LP)
 - - BASE PRODUCTION ZONE (BPZ)

NOTES:

1. COORDINATES, BEARINGS, AND DISTANCES SHOWN ARE LAMBERT GRID AND CONFORM TO THE COLORADO STATE PLANE COORDINATE SYSTEM, "CENTRAL ZONE", NORTH AMERICAN DATUM 1983, U.S. SURVEY FOOT
2. DISTANCES TO SECTION LINES ARE MEASURED AT 90 DEGREES FROM SAID SECTION LINES.
3. GROUND ELEVATIONS ARE BASED ON AN OBSERVED GPS ELEVATION (NAVD 1988 DATUM)
4. IMPROVEMENTS: SEE LOCATION DRAWING FOR ALL VISIBLE IMPROVEMENTS.
5. THIS MAP DOES NOT REPRESENT A BOUNDARY SURVEY.

CHILI PEPPER 4-63 6-4-4					
SHL (GROUND EL. 5603')			LP		
LAT°	LONG°	SEC 1/4-1/4	LAT°	LONG°	SEC 1/4-1/4
39.73215	-104.48790	6 SW-NW (LOT 3)	39.72944	-104.48842	6 NW-SW (LOT 4)
BHL			BPZ		
LAT°	LONG°	SEC 1/4-1/4	LAT°	LONG°	SEC 1/4-1/4
39.72947	-104.43433	4 NE-SE	39.72947	-104.43468	4 NE-SE

PDOP: 1.2
INSTRUMENT OPERATOR: NATHAN NASIF
LANDMAN: CORY NEIGHBORS
SURFACE USE: RANGELAND

I, STANLEY W. DRANNON, a Licensed Land Surveyor in the State of Colorado, do hereby certify that this Well Location Certificate is a true and correct representation of a survey made on the ground under my direct supervision and all facts are as shown herein.

Stanley W. Drannon 8/29/2023
Stanley Drannon
Registered Professional Land Surveyor
Colorado Registration No. 38543



BISON
IV OPERATING

Avery
LAND SERVICES

1321 W. Main St., Suite 522, Sterling, CO 80751

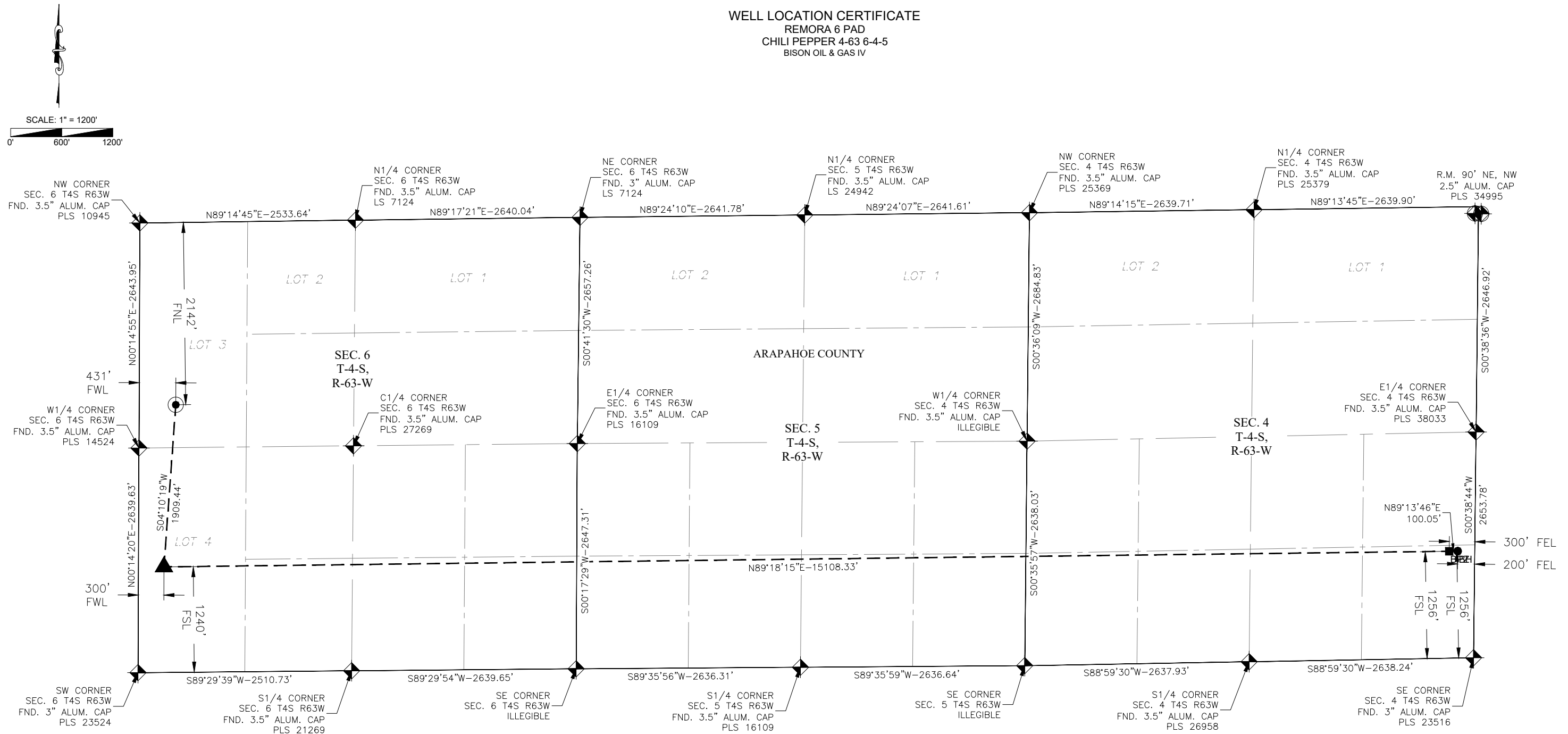
WELL LOCATION CERTIFICATE
REMORA 6 PAD
LOCATION DESCRIPTION:
SW 1/4 OF NW 1/4 OF (ALSO REFERRED TO AS LOT-3)
OF SECTION 6 T-4-S, R-63-W, 6th P.M.I.
ARAPAHOE COUNTY, COLORADO

Revision	Date	Description

Field Date: 8/25/2023
Drawing Date: 8/29/23
Drawn By: SRC
Sheet Number: 1 OF 1

WELL LOCATION CERTIFICATE

REMORA 6 PAD
CHILI PEPPER 4-63 6-4-5
BISON OIL & GAS IV



CHILI PEPPER 4-63 6-4-5

SHL (GROUND EL. 5603')						LP					
LAT°	LONG°	SEC 1/4-1/4	LAT°	LONG°	SEC 1/4-1/4	LAT°	LONG°	SEC 1/4-1/4	LAT°	LONG°	SEC 1/4-1/4
39.73209	-104.48790	6 SW-NW (LOT 3)	39.72687	-104.48847	6 SW-SW (LOT 4)						
BHL						BPZ					
LAT°	LONG°	SEC 1/4-1/4	LAT°	LONG°	SEC 1/4-1/4	LAT°	LONG°	SEC 1/4-1/4	LAT°	LONG°	SEC 1/4-1/4
39.72690	-104.43440	4 SE-SE	39.72690	-104.43476	4 SE-SE						

PDOP: 1.2
INSTRUMENT OPERATOR: NATHAN NASIF
LANDMAN: CORY NEIGHBORS
SURFACE USE: RANGELAND

NOTES:

- COORDINATES, BEARINGS, AND DISTANCES SHOWN ARE LAMBERT GRID AND CONFORM TO THE COLORADO STATE PLANE COORDINATE SYSTEM, "CENTRAL ZONE", NORTH AMERICAN DATUM 1983, U.S. SURVEY FOOT
- DISTANCES TO SECTION LINES ARE MEASURED AT 90 DEGREES FROM SAID SECTION LINES.
- GROUND ELEVATIONS ARE BASED ON AN OBSERVED GPS ELEVATION (NAVD 1988 DATUM)
- IMPROVEMENTS: SEE LOCATION DRAWING FOR ALL VISIBLE IMPROVEMENTS.
- THIS MAP DOES NOT REPRESENT A BOUNDARY SURVEY.

I, STANLEY W. DRANNON, a Licensed Land Surveyor in the State of Colorado, do hereby certify that this Well Location Certificate is a true and correct representation of a survey made on the ground under my direct supervision and all facts are as shown herein.

Stanley W. Drannon
8/29/2023
Stanley Drannon
Registered Professional Land Surveyor
Colorado Registration No. 38543



- LEGEND**
- ◆ - ALIQUOT MONUMENT AS DESCRIBED
 - - CALCULATED POSITION
 - - SURFACE HOLE LOCATION (SHL)
 - BH - BOTTOM HOLE LOCATION (BHL)
 - ▲ - LANDING POINT (LP)
 - BPZ - BASE PRODUCTION ZONE (BPZ)

BISON
IV OPERATING

Avery
LAND SERVICES

1321 W. Main St., Suite 522, Sterling, CO 80751

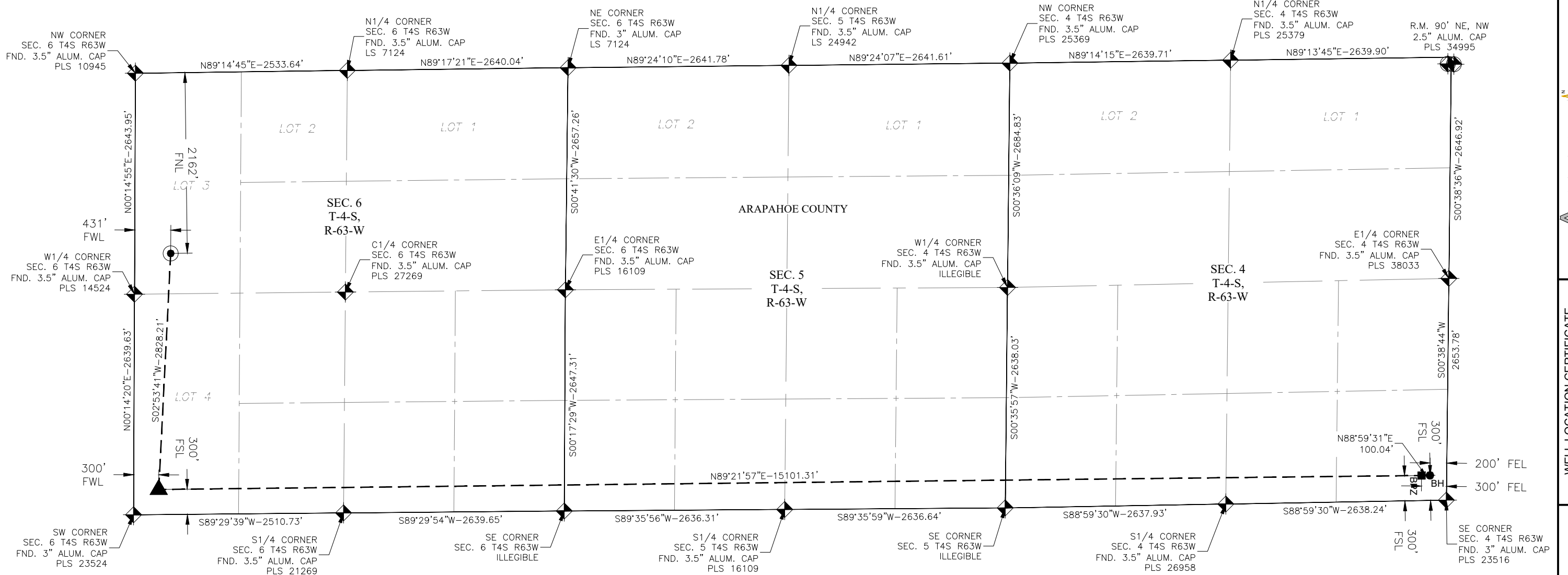
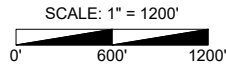
WELL LOCATION CERTIFICATE
REMORA 6 PAD
LOCATION DESCRIPTION:
SW 1/4 OF NW 1/4 OF (ALSO REFERRED TO AS LOT-3)
OF SECTION 6 T-4-S, R-63-W, 6th P.M.
ARAPAHOE COUNTY, COLORADO

Revision	Date	Description

Field Date: 8/25/2023
Drawing Date: 8/29/23
Drawn By: SRC
Sheet Number: 1 OF 1

WELL LOCATION CERTIFICATE

REMORA 6 PAD
CHILI PEPPER 4-63 6-4-6
BISON OIL & GAS IV



- LEGEND**
- ◆ - ALIQUOT MONUMENT AS DESCRIBED
 - - CALCULATED POSITION
 - - SURFACE HOLE LOCATION (SHL)
 - BH - BOTTOM HOLE LOCATION (BHL)
 - ▲ - LANDING POINT (LP)
 - BPZ - BASE PRODUCTION ZONE (BPZ)

NOTES:

1. COORDINATES, BEARINGS, AND DISTANCES SHOWN ARE LAMBERT GRID AND CONFORM TO THE COLORADO STATE PLANE COORDINATE SYSTEM, "CENTRAL ZONE", NORTH AMERICAN DATUM 1983, U.S. SURVEY FOOT
2. DISTANCES TO SECTION LINES ARE MEASURED AT 90 DEGREES FROM SAID SECTION LINES.
3. GROUND ELEVATIONS ARE BASED ON AN OBSERVED GPS ELEVATION (NAVD 1988 DATUM)
4. IMPROVEMENTS: SEE LOCATION DRAWING FOR ALL VISIBLE IMPROVEMENTS.
5. THIS MAP DOES NOT REPRESENT A BOUNDARY SURVEY.

CHILI PEPPER 4-63 6-4-6					
SHL (GROUND EL. 5603')			LP		
LAT°	LONG°	SEC 1/4-1/4	LAT°	LONG°	SEC 1/4-1/4
39.73204	-104.48790	6 SW-NW (LOT 3)	39.72429	-104.48852	6 SW-SW (LOT 4)
BHL			BPZ		
LAT°	LONG°	SEC 1/4-1/4	LAT°	LONG°	SEC 1/4-1/4
39.72428	-104.43448	4 SE-SE	39.72428	-104.43484	4 SE-SE

PDOP: 1.2
INSTRUMENT OPERATOR: NATHAN NASIF
LANDMAN: CORY NEIGHBORS
SURFACE USE: RANGELAND

I, STANLEY W. DRANNON, a Licensed Land Surveyor in the State of Colorado, do hereby certify that this Well Location Certificate is a true and correct representation of a survey made on the ground under my direct supervision and all facts are as shown herein.

Stanley W. Drannon 8/29/2023
Stanley Drannon
Registered Professional Land Surveyor
Colorado Registration No. 38543



WELL LOCATION CERTIFICATE

REMORA 6 PAD
LOCATION DESCRIPTION:
SW 1/4 OF NW 1/4 OF (ALSO REFERRED TO AS LOT-3)
OF SECTION 6 T-4-S, R-63-W, 6th P.M.I.
ARAPAHOE COUNTY, COLORADO

Description

Date

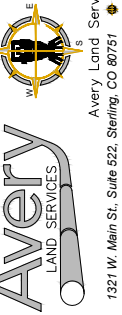
Revision

Field Date:

Drawing Date:

Drawn By:

Sheet Number:



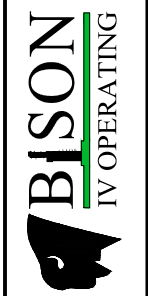
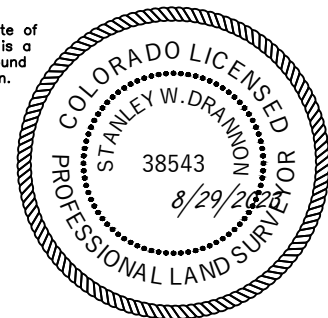
Avery Land Services
1321 W. Main St., Suite 522, Sterling, CO 80751



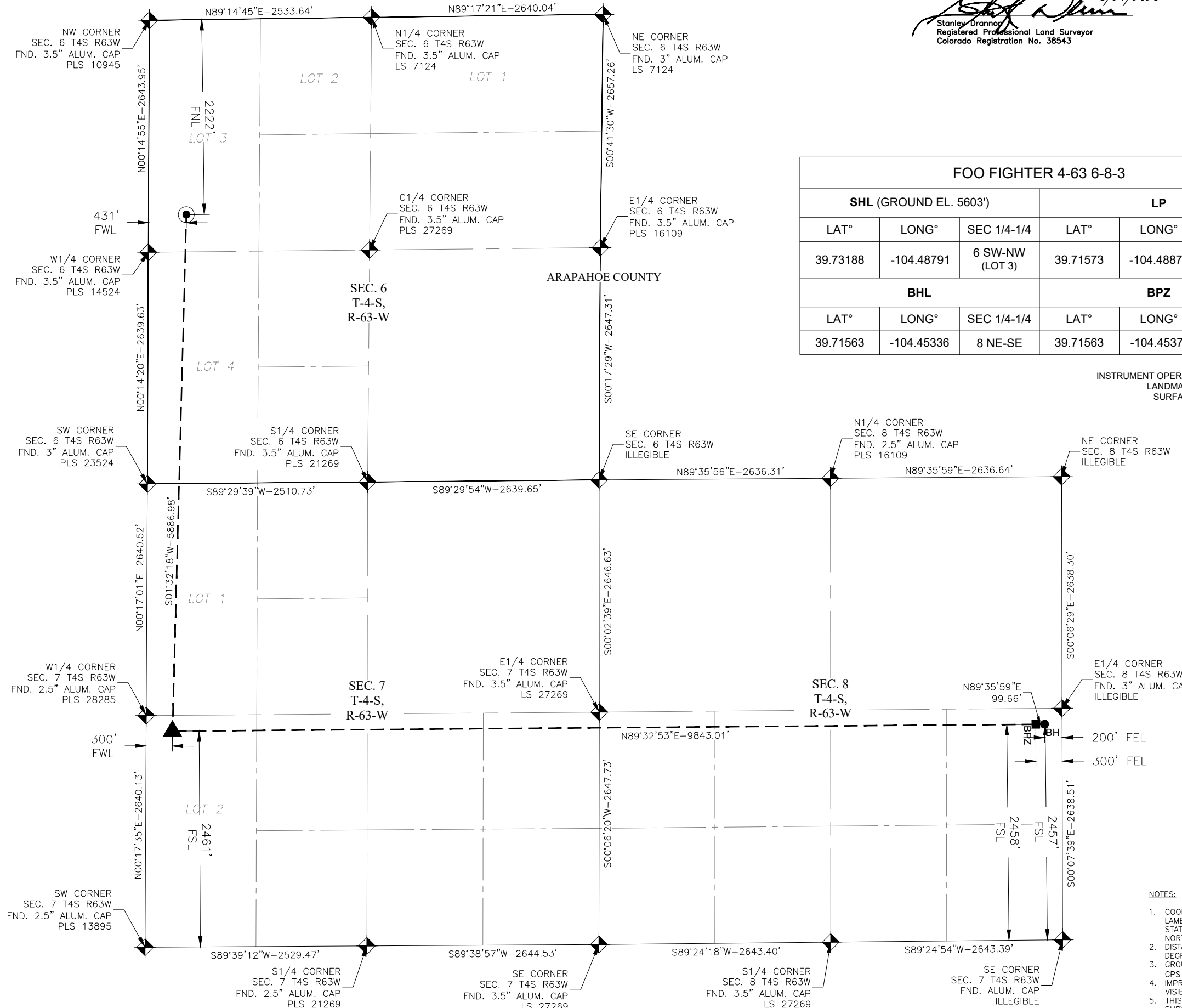
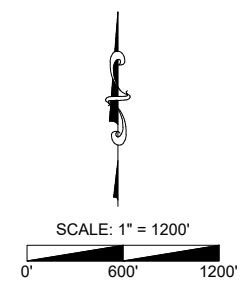
WELL LOCATION CERTIFICATE
 REMORA 6 PAD
 FOO FIGHTER 4-63 6-8-3
 BISON OIL & GAS IV

I, STANLEY W. DRANNON, a Licensed Land Surveyor in the State of Colorado, do hereby certify that this Well Location Certificate is a true and correct representation of a survey made on the ground under my direct supervision and all facts are as shown herein.

Stanley W. Drannon
 8/29/2023
 Stanley Drannon
 Registered Professional Land Surveyor
 Colorado Registration No. 38543



WELL LOCATION CERTIFICATE
 REMORA 6 PAD
 LOCATION DESCRIPTION:
 SW 1/4 OF NW 1/4 OF (ALSO REFERRED TO AS LOT-3)
 OF SECTION 6 T-4-S, R-63-W, 6th P.M.
 ARAPAHOE COUNTY, COLORADO



FOO FIGHTER 4-63 6-8-3					
SHL (GROUND EL. 5603')			LP		
LAT°	LONG°	SEC 1/4-1/4	LAT°	LONG°	SEC 1/4-1/4
39.73188	-104.48791	6 SW-NW (LOT 3)	39.71573	-104.48870	7 NW-SW (LOT 2)
BHL			BPZ		
LAT°	LONG°	SEC 1/4-1/4	LAT°	LONG°	SEC 1/4-1/4
39.71563	-104.45336	8 NE-SE	39.71563	-104.45371	8 NE-SE

PDOP: 1.2
 INSTRUMENT OPERATOR: NATHAN NASIF
 LANDMAN: CORY NEIGHBORS
 SURFACE USE: RANGELAND

- LEGEND**
- ◆ - ALIQUOT MONUMENT AS DESCRIBED
 - - CALCULATED POSITION
 - - SURFACE HOLE LOCATION (SHL)
 - - BOTTOM HOLE LOCATION (BHL)
 - ▲ - LANDING POINT (LP)
 - - BASE PRODUCTION ZONE (BPZ)

- NOTES:**
- COORDINATES, BEARINGS, AND DISTANCES SHOWN ARE LAMBERT GRID AND CONFORM TO THE COLORADO STATE PLANE COORDINATE SYSTEM, "CENTRAL ZONE", NORTH AMERICAN DATUM 1983, U.S. SURVEY FOOT
 - DISTANCES TO SECTION LINES ARE MEASURED AT 90 DEGREES FROM SAID SECTION LINES.
 - GROUND ELEVATIONS ARE BASED ON AN OBSERVED GPS ELEVATION (NAVD 1988 DATUM)
 - IMPROVEMENTS: SEE LOCATION DRAWING FOR ALL VISIBLE IMPROVEMENTS.
 - THIS MAP DOES NOT REPRESENT A BOUNDARY SURVEY.

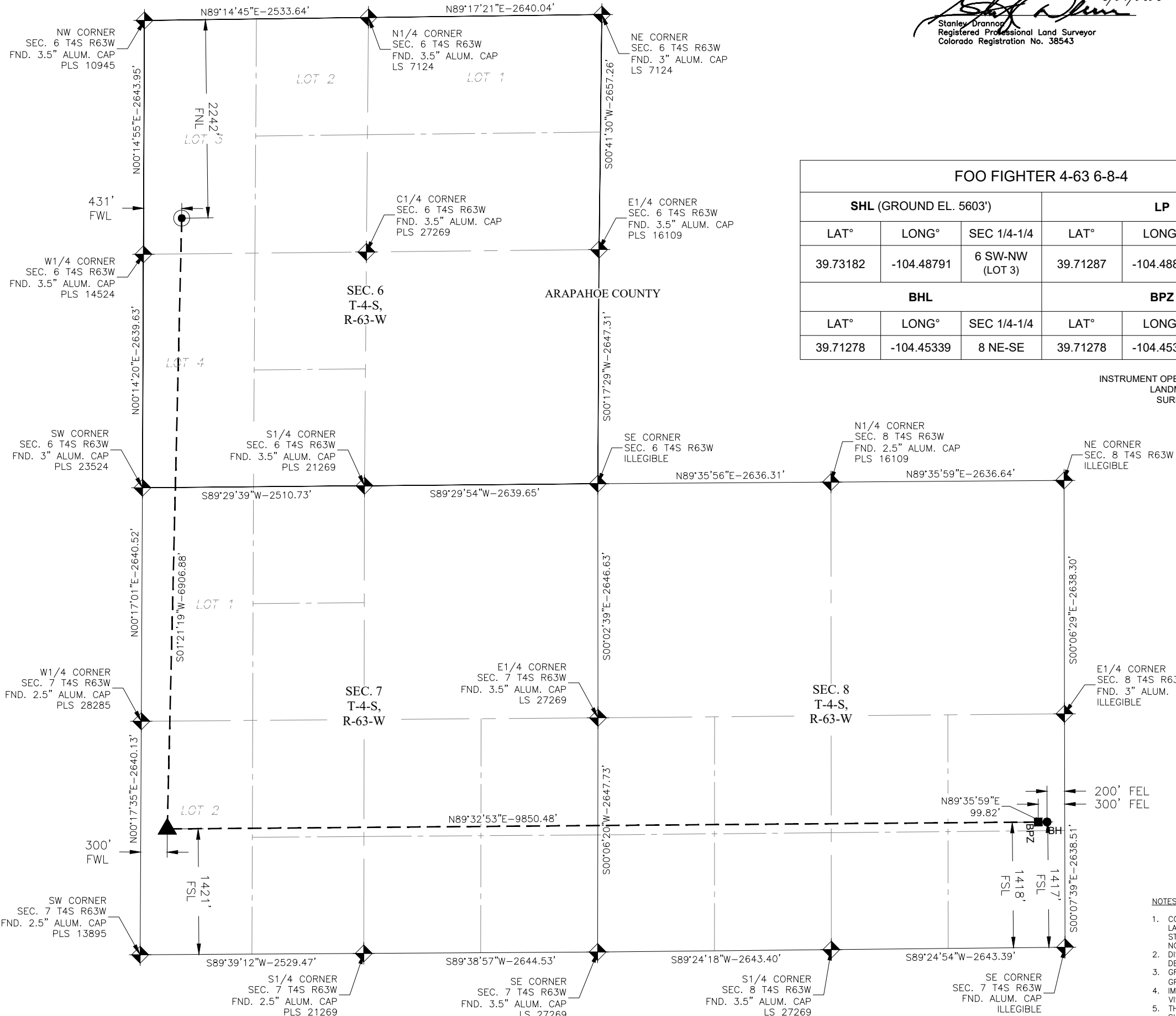
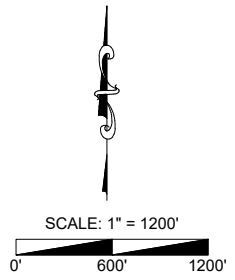
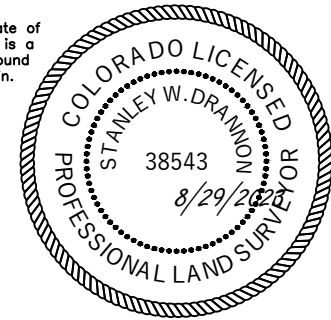
Revision	Date	Description

Field Date: 8/25/2023
 Drawing Date: 8/29/23
 Drawn By: SRC
 Sheet Number: 1 OF 1

WELL LOCATION CERTIFICATE
REMORA 6 PAD
FOO FIGHTER 4-63 6-8-4
 BISON OIL & GAS IV

I, STANLEY W. DRANNON, a Licensed Land Surveyor in the State of Colorado, do hereby certify that this Well Location Certificate is a true and correct representation of a survey made on the ground under my direct supervision and all facts are as shown herein.

Stanley W. Drannon
 8/29/2023
 Stanley Drannon
 Registered Professional Land Surveyor
 Colorado Registration No. 38543



FOO FIGHTER 4-63 6-8-4					
SHL (GROUND EL. 5603')			LP		
LAT°	LONG°	SEC 1/4-1/4	LAT°	LONG°	SEC 1/4-1/4
39.73182	-104.48791	6 SW-NW (LOT 3)	39.71287	-104.48876	7 NW-SW (LOT 2)
BHL			BPZ		
LAT°	LONG°	SEC 1/4-1/4	LAT°	LONG°	SEC 1/4-1/4
39.71278	-104.45339	8 NE-SE	39.71278	-104.45375	8 NE-SE

PDOP: 1.3
 INSTRUMENT OPERATOR: NATHAN NASIF
 LANDMAN: CORY NEIGHBORS
 SURFACE USE: RANGELAND

- LEGEND**
- ◆ - ALIQUOT MONUMENT AS DESCRIBED
 - - CALCULATED POSITION
 - - SURFACE HOLE LOCATION (SHL)
 - - BOTTOM HOLE LOCATION (BHL)
 - ▲ - LANDING POINT (LP)
 - - BASE PRODUCTION ZONE (BPZ)

- NOTES:**
- COORDINATES, BEARINGS, AND DISTANCES SHOWN ARE LAMBERT GRID AND CONFORM TO THE COLORADO STATE PLANE COORDINATE SYSTEM, "CENTRAL ZONE", NORTH AMERICAN DATUM 1983, U.S. SURVEY FOOT
 - DISTANCES TO SECTION LINES ARE MEASURED AT 90 DEGREES FROM SAID SECTION LINES.
 - GROUND ELEVATIONS ARE BASED ON AN OBSERVED GPS ELEVATION (NAVD 1988 DATUM)
 - IMPROVEMENTS: SEE LOCATION DRAWING FOR ALL VISIBLE IMPROVEMENTS.
 - THIS MAP DOES NOT REPRESENT A BOUNDARY SURVEY.

WELL LOCATION CERTIFICATE
 REMORA 6 PAD
 LOCATION DESCRIPTION:
 SW 1/4 OF NW 1/4 OF (ALSO REFERRED TO AS LOT-3)
 OF SECTION 6 T-4-S, R-63-W, 6th P.M.,
 ARAPAHOE COUNTY, COLORADO

Revision	Date	Description

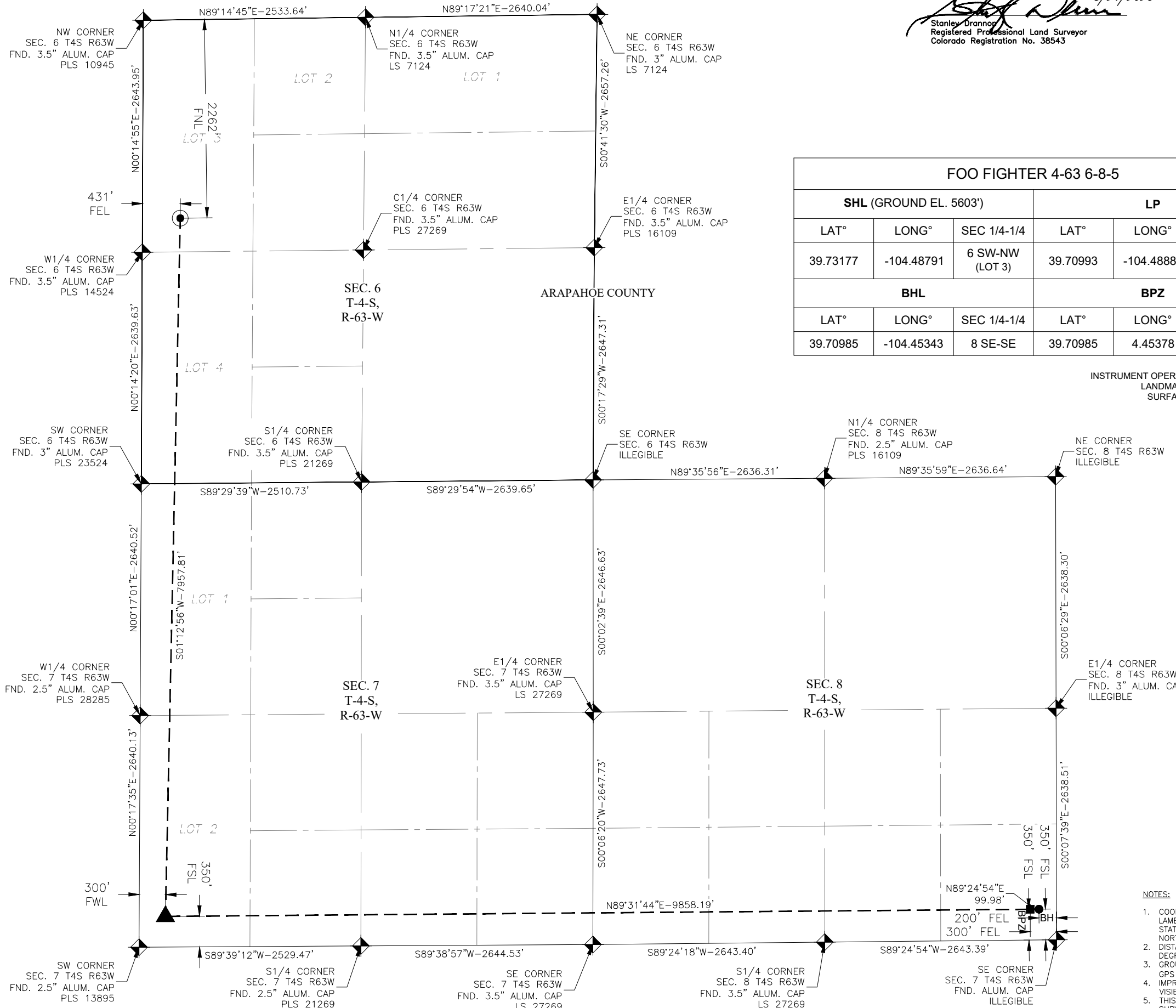
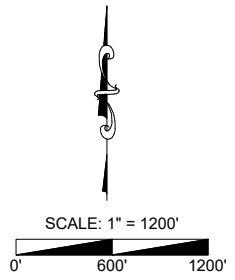
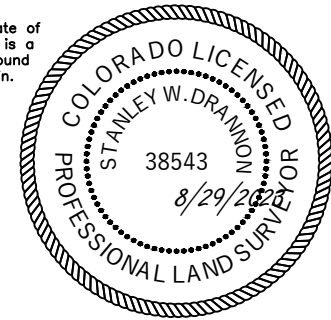
Field Date: 8/25/2023
 Drawing Date: 8/29/23
 Drawn By: SRC
 Sheet Number: 1 OF 1

Avery Land Services
 1321 W. Main St., Suite 522, Sterling, CO 80751

WELL LOCATION CERTIFICATE
 REMORA 6 PAD
 FOO FIGHTER 4-63 6-8-5
 BISON OIL & GAS IV

I, STANLEY W. DRANNON, a Licensed Land Surveyor in the State of Colorado, do hereby certify that this Well Location Certificate is a true and correct representation of a survey made on the ground under my direct supervision and all facts are as shown herein.

Stanley W. Drannon
 8/29/2023
 Stanley Drannon
 Registered Professional Land Surveyor
 Colorado Registration No. 38543



FOO FIGHTER 4-63 6-8-5					
SHL (GROUND EL. 5603')			LP		
LAT°	LONG°	SEC 1/4-1/4	LAT°	LONG°	SEC 1/4-1/4
39.73177	-104.48791	6 SW-NW (LOT 3)	39.70993	-104.48882	7SW-SW (LOT 2)
BHL			BPZ		
LAT°	LONG°	SEC 1/4-1/4	LAT°	LONG°	SEC 1/4-1/4
39.70985	-104.45343	8 SE-SE	39.70985	4.45378	8 SE-SE

PDOP: 1.4
 INSTRUMENT OPERATOR: NATHAN NASIF
 LANDMAN: CORY NEIGHBORS
 SURFACE USE: RANGELAND

- LEGEND**
- ALIQUOT MONUMENT AS DESCRIBED
 - CALCULATED POSITION
 - SURFACE HOLE LOCATION (SHL)
 - BOTTOM HOLE LOCATION (BHL)
 - LANDING POINT (LP)
 - BASE PRODUCTION ZONE (BPZ)

- NOTES:**
- COORDINATES, BEARINGS, AND DISTANCES SHOWN ARE LAMBERT GRID AND CONFORM TO THE COLORADO STATE PLANE COORDINATE SYSTEM, "CENTRAL ZONE", NORTH AMERICAN DATUM 1983, U.S. SURVEY FOOT
 - DISTANCES TO SECTION LINES ARE MEASURED AT 90 DEGREES FROM SAID SECTION LINES.
 - GROUND ELEVATIONS ARE BASED ON AN OBSERVED GPS ELEVATION (NAVD 1988 DATUM)
 - IMPROVEMENTS: SEE LOCATION DRAWING FOR ALL VISIBLE IMPROVEMENTS.
 - THIS MAP DOES NOT REPRESENT A BOUNDARY SURVEY.

WELL LOCATION CERTIFICATE
 REMORA 6 PAD
 LOCATION DESCRIPTION:
 SW 1/4 OF NW 1/4 OF (ALSO REFERRED TO AS LOT-3)
 OF SECTION 6 T-4-S, R-63-W, 6th P.M.
 ARAPAHOE COUNTY, COLORADO

Revision	Date	Description

Field Date: 8/25/2023
 Drawing Date: 8/29/23
 Drawn By: SRC
 Sheet Number: 1 OF 1

BISON
 OIL & GAS
 OPERATING

Avery Land Services
 1321 W. Main St., Suite 522, Sterling, CO 80751