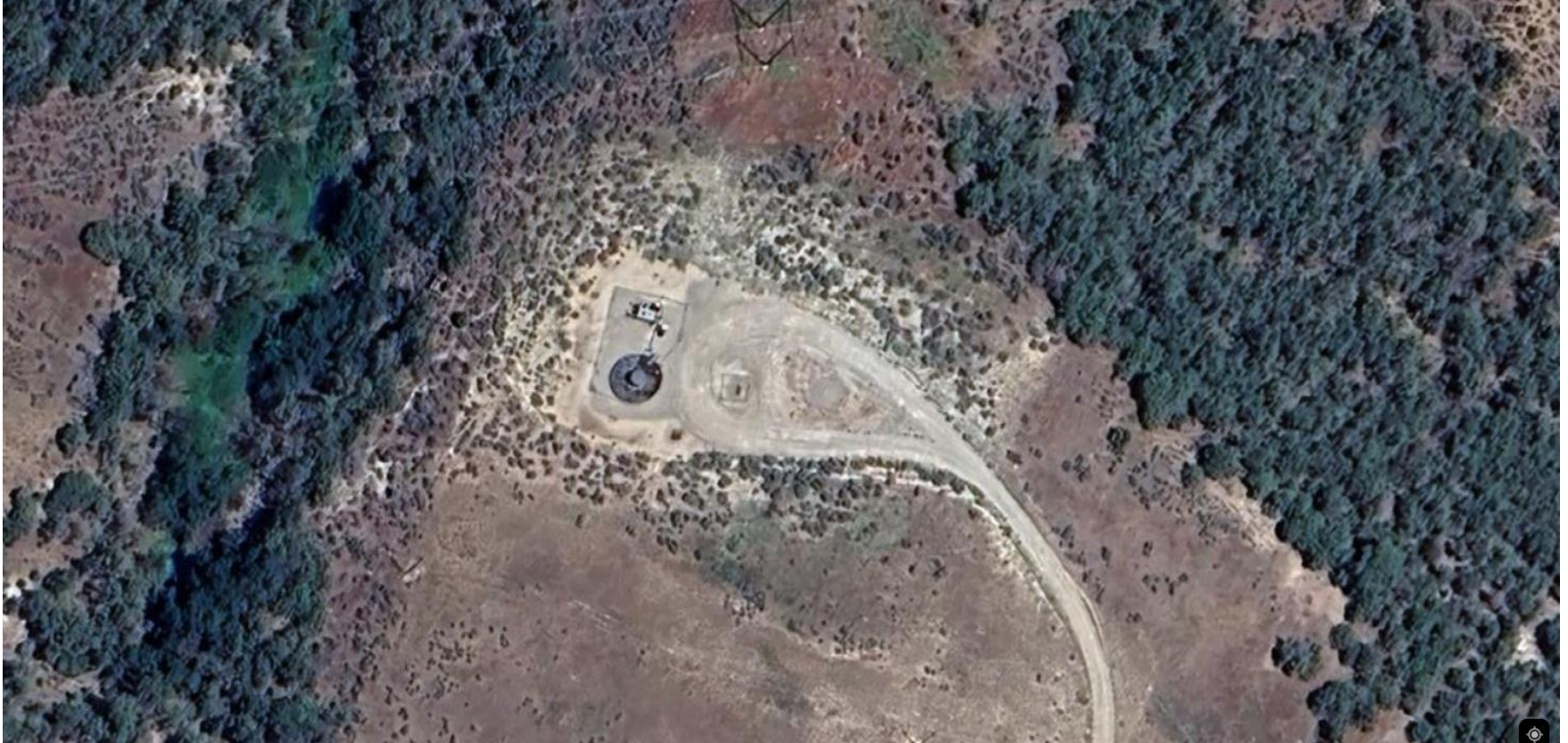


## **Storm Water Management and Erosion control**

**Location Name: TEP ROCKY MOUNTAIN LLC SAVAGE RMV 105-33 Pad**

**Location ID: 324027**



**Location Overview: Location is within High  
Priority/Density/Black Bear Habitat areas.**

**Section/Township/Range: 33 6S94W**



**COLORADO**  
Energy & Carbon Management  
Commission  
Department of Natural Resources



**Storm water Management and Erosion control**  
**Location Name: TEP ROCKY MOUNTAIN LLC SAVAGE RMV 105-33 Pad**  
**Location ID: 324027**



**North West corner of location.**



**North East corner of location.**



**South West corner of location.**



**South East corner of location.**