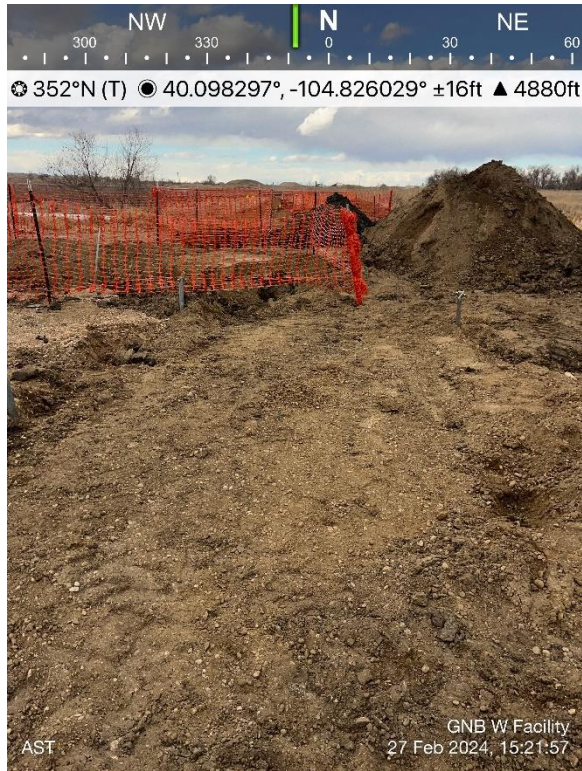


PHOTO LOG
GNB W 31-3,4,5J,6 FACILITY
WELD COUNTY, COLORADO
KERR-MCGEE OIL & GAS ONSHORE, LP

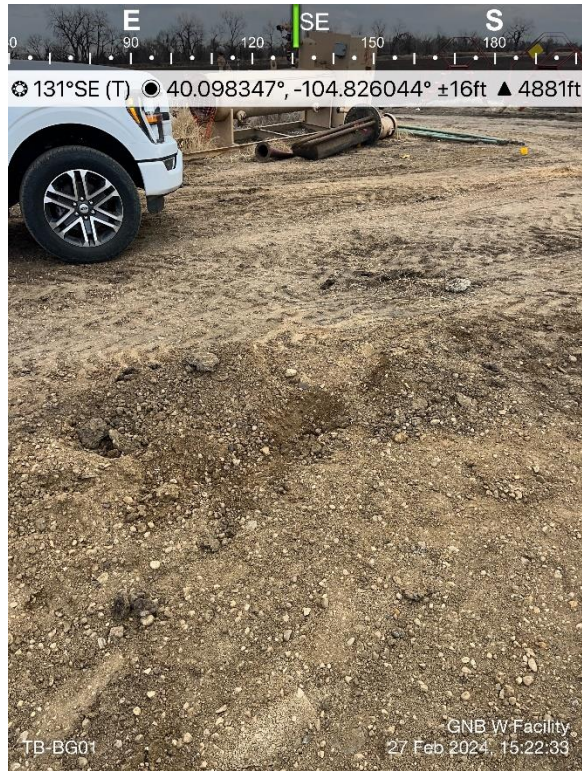


Aboveground Storage Tank Footprint



AST Footprint Location

PHOTO LOG
GNB W 31-3,4,5J,6 FACILITY
WELD COUNTY, COLORADO
KERR-MCGEE OIL & GAS ONSHORE, LP



Background Sample Location



PWV Excavation

PHOTO LOG
GNB W 31-3,4,5J,6 FACILITY
WELD COUNTY, COLORADO
KERR-MCGEE OIL & GAS ONSHORE, LP



Dump Line Location



FL01@5' Sample Location

PHOTO LOG
GNB W 31-3,4,5J,6 FACILITY
WELD COUNTY, COLORADO
KERR-MCGEE OIL & GAS ONSHORE, LP



Separator Outlet



Separator Inlet

PHOTO LOG
GNB W 31-3,4,5J,6 FACILITY
WELD COUNTY, COLORADO
KERR-MCGEE OIL & GAS ONSHORE, LP



Background Sample Location



AST Tank Bottom

PHOTO LOG
GNB W 31-3,4,5J,6 FACILITY
WELD COUNTY, COLORADO
KERR-MCGEE OIL & GAS ONSHORE, LP



Ground Water 01 Sample

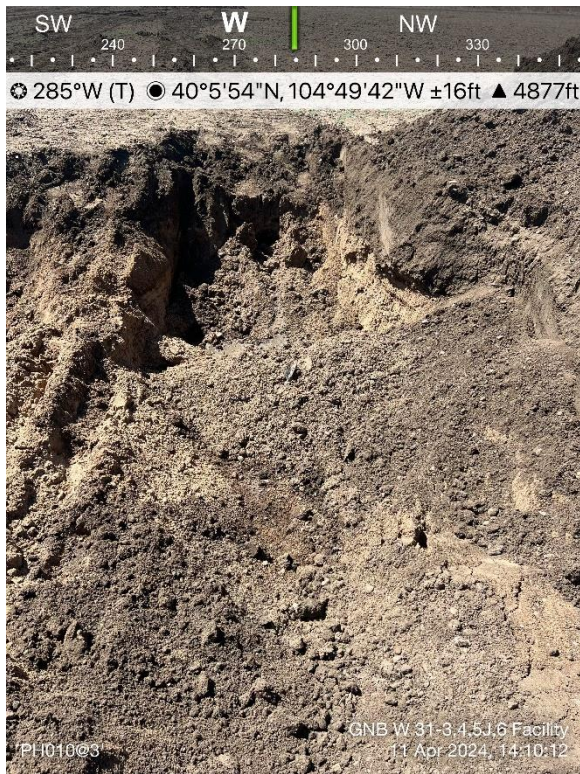


Flowline 08 Sample

PHOTO LOG
GNB W 31-3,4,5J,6 FACILITY
WELD COUNTY, COLORADO
KERR-MCGEE OIL & GAS ONSHORE, LP

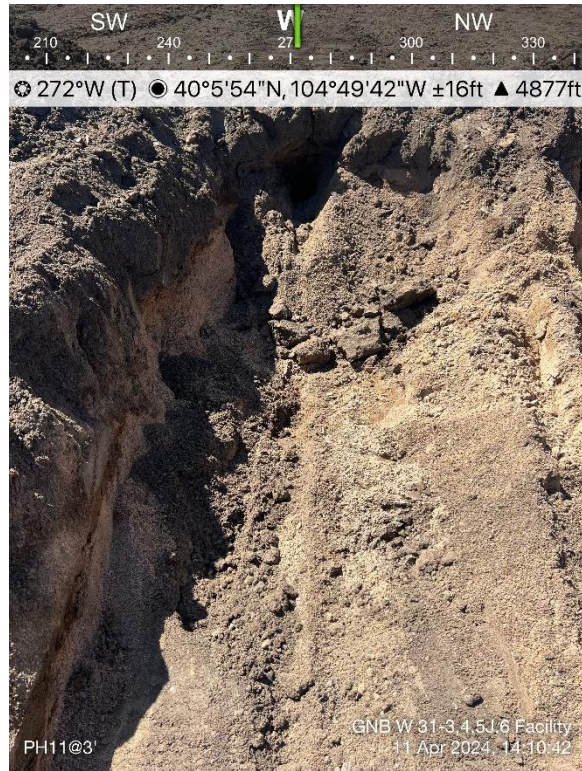


Pothole 09 Sample



Pothole 10 Sample

PHOTO LOG
GNB W 31-3,4,5J,6 FACILITY
WELD COUNTY, COLORADO
KERR-MCGEE OIL & GAS ONSHORE, LP

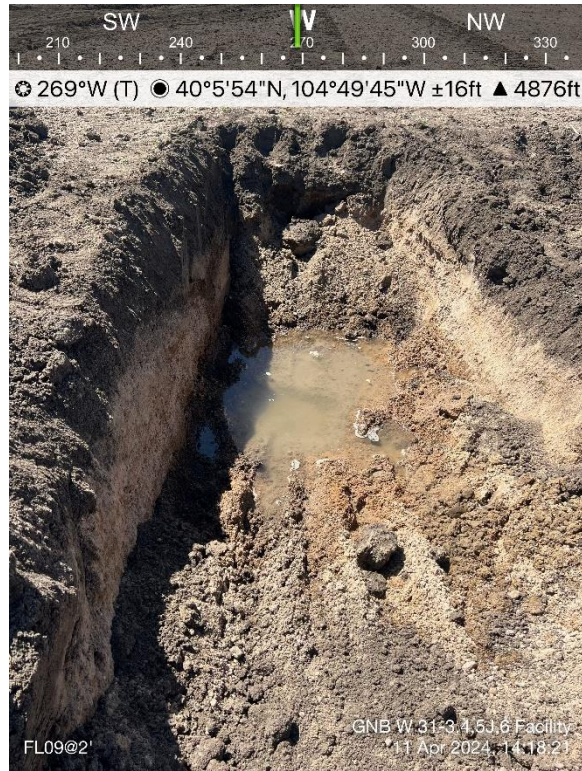


Pothole 11 Sample



Pothole 12 Sample

PHOTO LOG
GNB W 31-3,4,5J,6 FACILITY
WELD COUNTY, COLORADO
KERR-MCGEE OIL & GAS ONSHORE, LP



Flowline 09 Sample

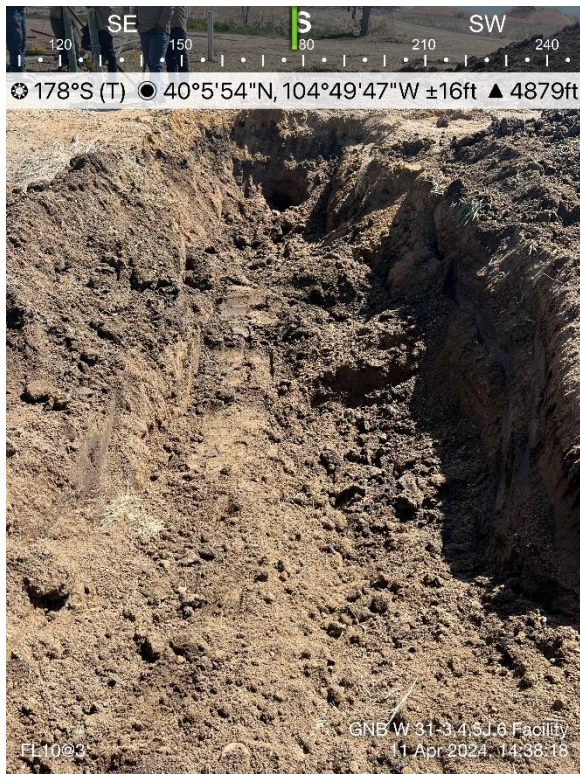


Pothole 14 Sample

PHOTO LOG
GNB W 31-3,4,5J,6 FACILITY
WELD COUNTY, COLORADO
KERR-MCGEE OIL & GAS ONSHORE, LP

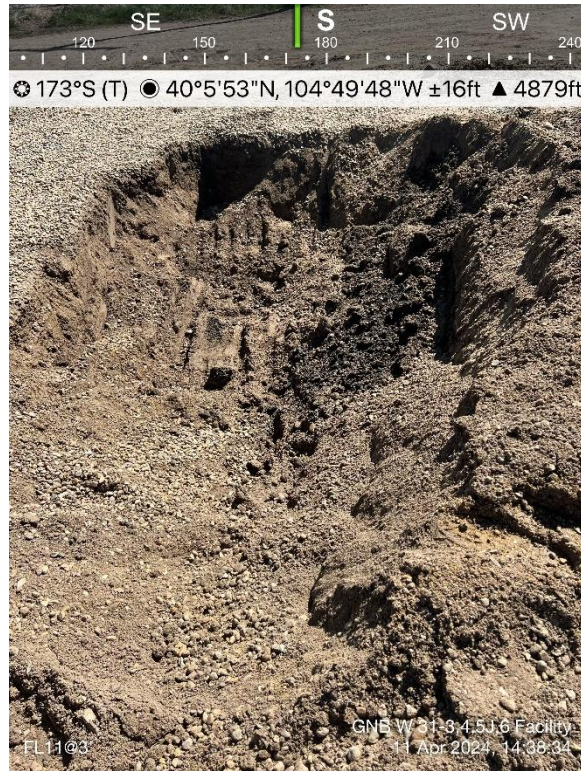


Pothole 15 Sample



Flowline 10 Sample

PHOTO LOG
GNB W 31-3,4,5J,6 FACILITY
WELD COUNTY, COLORADO
KERR-MCGEE OIL & GAS ONSHORE, LP

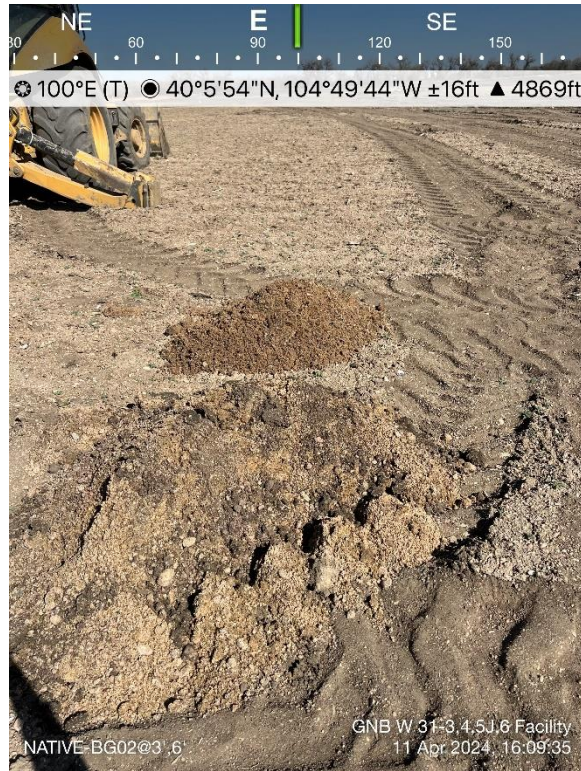


Flowline 11 Sample

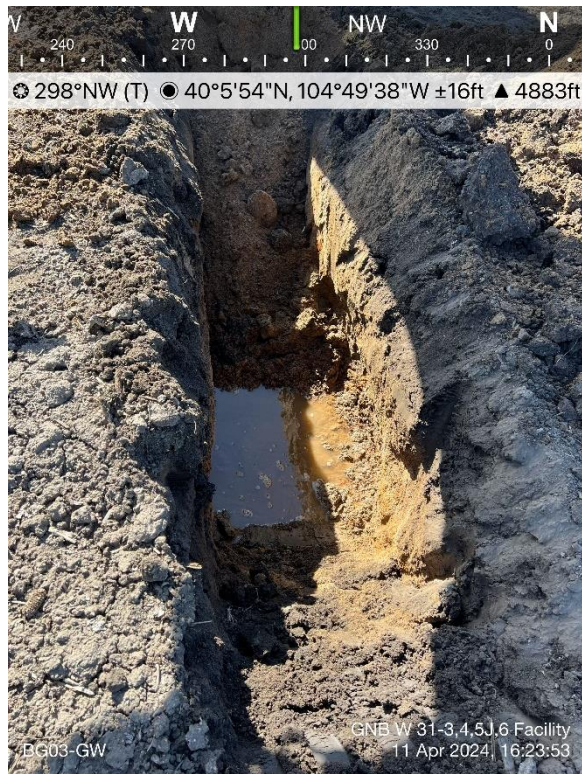


Groundwater at Background Sample BG02

PHOTO LOG
GNB W 31-3,4,5J,6 FACILITY
WELD COUNTY, COLORADO
KERR-MCGEE OIL & GAS ONSHORE, LP



Background Sample Location

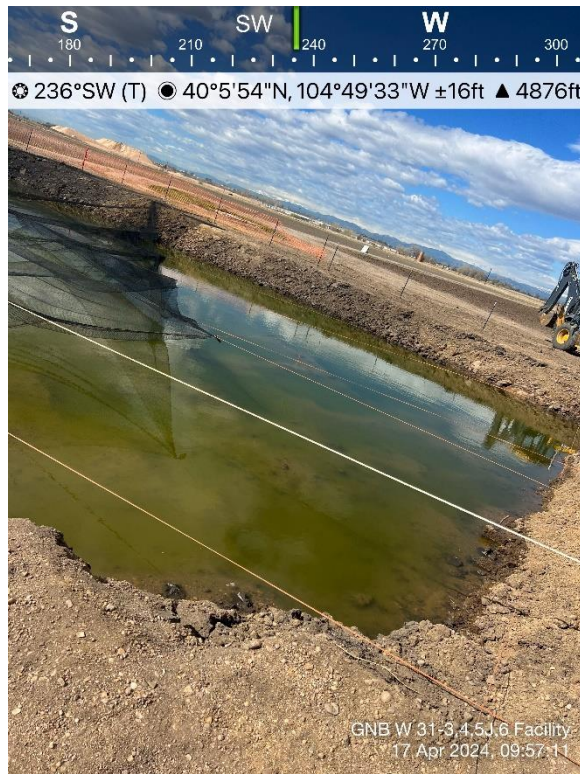


Groundwater at Background Sample BG03

PHOTO LOG
GNB W 31-3,4,5J,6 FACILITY
WELD COUNTY, COLORADO
KERR-MCGEE OIL & GAS ONSHORE, LP



Background Sample Location

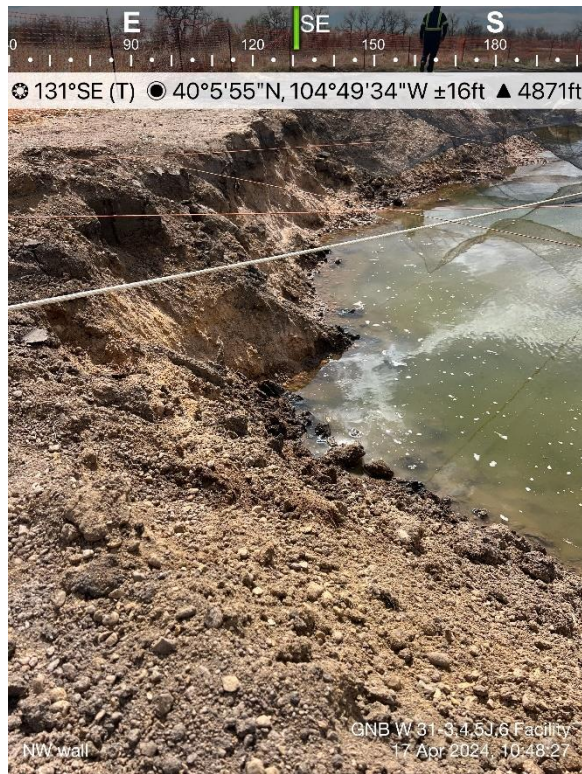


Excavation Extent

PHOTO LOG
GNB W 31-3,4,5J,6 FACILITY
WELD COUNTY, COLORADO
KERR-MCGEE OIL & GAS ONSHORE, LP



Excavation Extent



Northwest sidewall of excavation extent

PHOTO LOG
GNB W 31-3,4,5J,6 FACILITY
WELD COUNTY, COLORADO
KERR-MCGEE OIL & GAS ONSHORE, LP



North and West side wall of excavation extent