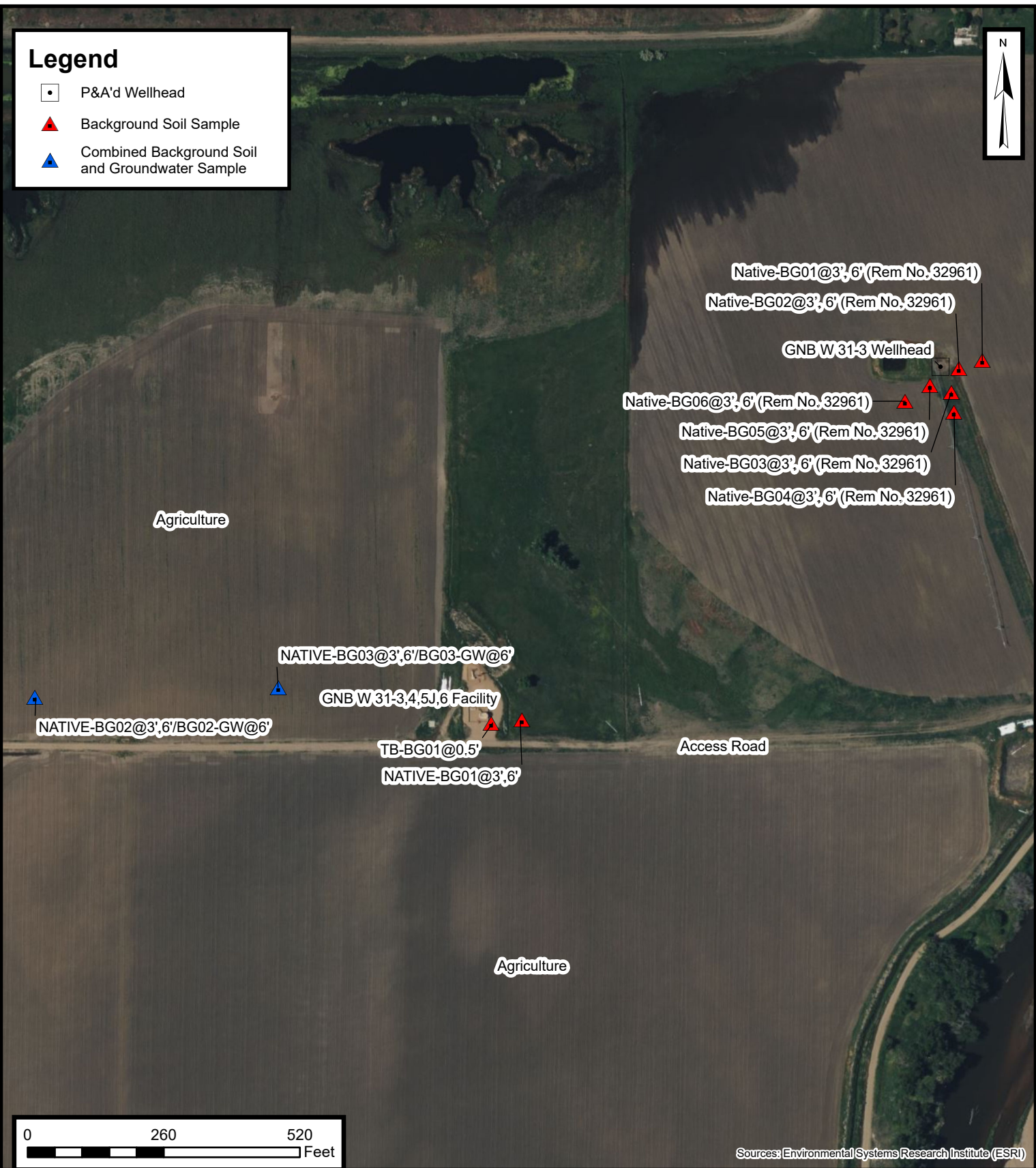


# Legend

- ◻ P&A'd Wellhead
- ▲ Background Soil Sample
- ▲ Combined Background Soil and Groundwater Sample



Default Folder: C:\Users\Margan.TalOneDrive - ENSOLUM,LLC\Ensolium\GIS0 - Projects\Kerr-McGee Oil & Gas Onshore, LP\09A1417648 - GNB W 31-3,4,5J,6 Facility



## Background Sample Location Map

GNB W 31-3,4,5J,6 Facility  
Kerr-McGee Oil & Gas Onshore, LP  
NWNW SEC 31-T2N-R66W  
Weld County, CO

Project Number: 09A1417648

FIGURE  
3