

Beeman Oil & Gas Inc
Stoddard 33-30
Location ID: 423933



Oily waste and stained soil

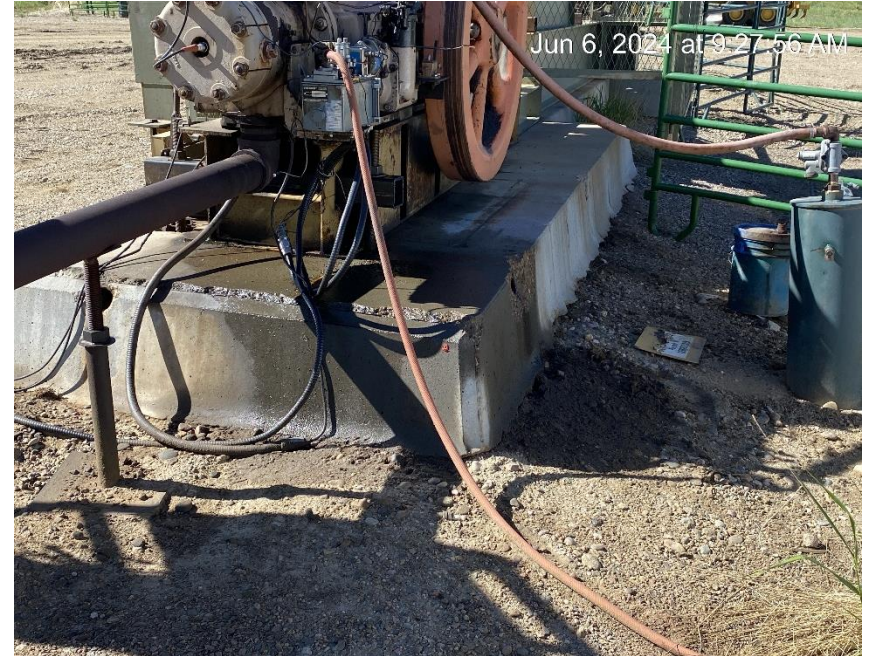


Debris

**Beeman Oil & Gas Inc
Stoddard 33-30
Location ID: 423933**



Containment open to wildlife



Equipment leak and stained soil

Beeman Oil & Gas Inc
Stoddard 33-30
Location ID: 423933



Debris

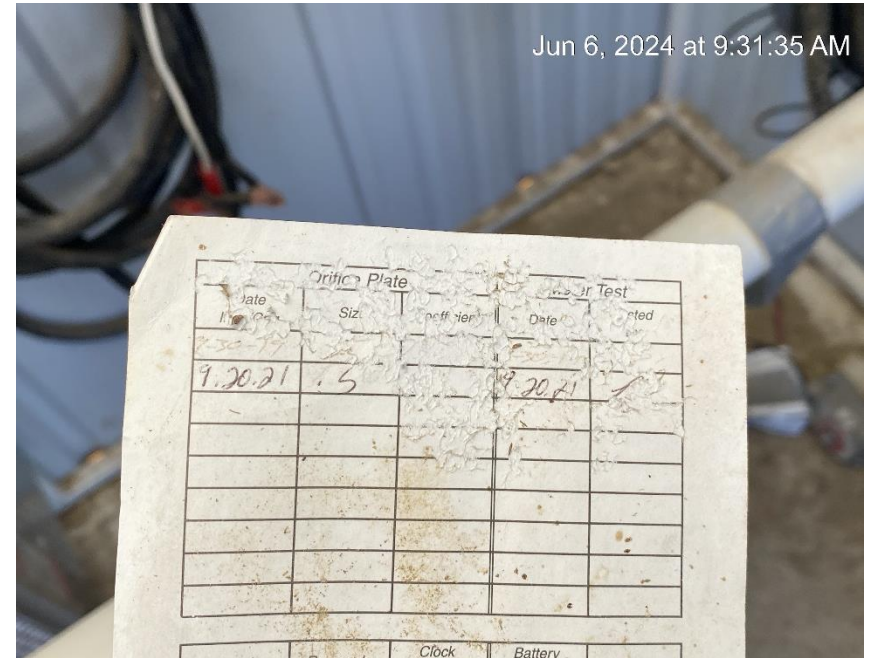


Unlabeled and disconnected chemical tank

Beeman Oil & Gas Inc
Stoddard 33-30
Location ID: 423933



Relief riser missing protective cover



Calibration card on the floor and out of date

Beeman Oil & Gas Inc
Stoddard 33-30
Location ID: 423933



Open ended load line



Soil staining at truck loadout

Beeman Oil & Gas Inc
Stoddard 33-30
Location ID: 423933



Location from Southwest corner



Location from Northwest corner

Beeman Oil & Gas Inc
Stoddard 33-30
Location ID: 423933



Location from Northeast corner



Location from Southeast corner