

## Flowline Closure Checklist

### COGCC Rule 911.a.(4) Environmental Site Closure Assessment Field Form

Additional Attachments:		Tank Battery Closure	—	Wellhead Closure	—	Pit Closure	—	Partially Buried Vault Closure	—
Site Name & COGCC Facility Number: Storer A #12-2		Date: 5/20/24			Remediation Project #: 33867				
Associated Wells: 05-123-23275		Age of Site:      years			Number of Photos Attached: 2				
Starting point: (GPS coordinates and descriptions) 40.506220 / -104.495530 (@ Wellhead)									
End point: (GPS coordinates and descriptions) 40.501635 / -104.492512 (@ Separator)									
USCS Soil Type: Clayey SAND					Estimated Depth to Groundwater: ~15-25'				
Hydrocarbon Impacted Soils / Spills: (Note estimated size and if impact appears to be surficial or extends to an unknown depth) None observed									
Salt Crusted Soils or Impacted Vegetation: (Note estimated size and if impact appears to be surficial or extends to an unknown depth) None observed									
Flowlines									
Flowline type	O, G, W								
Depth	~4'								
Age	years								
Length	~1,865'								
Construction Material	Steel								
Were flowlines pulled?	No - Abandoned in Place								
Visual Integrity of lines	Good								
Visual impacts if trenched	None observed								
PID Readings if trenched	0.2	1.1							
Sample taken? Location/Sample ID#	FL01R-W	FL02R-S							
Photo Number(s)	See photo log								
Other observations regarding on location flowlines: Flowline abandoned in place. Flowline Pt A and Pt B assessed + lab analyzed.									
Summary									
Was impacted soil identified? <input checked="" type="radio"/> No      Yes - less than 10 cubic yards      Yes - more than 10 cubic yards									
Total number of samples field screened: 2					Total number of samples collected: 2				
Highest PID Reading: 1.1					Total number of samples submitted to lab for analysis: 2				
If more than 10 cubic yards of impacted soil were observed:									
Vertical extent:					Estimated spill volume:				
Lateral extent: N/A					Volume of soil removed:				
Is additional investigation required?									
Was groundwater encountered during the investigation? <input checked="" type="radio"/> No      Yes - not impacted or in contact with impacted soils      Yes - groundwater impacted and/or in contact with impacted soils									
Measured depth to groundwater:					Was remedial groundwater removal conducted? Yes      No				
Date Groundwater was encountered:					Commencement date of removal:				
Sheen on groundwater?      Yes      No					Volume of groundwater removed prior to sampling:				
Free product observed?      Yes      No					Volume of groundwater removed post sampling:				
Total number of samples collected:					Total Volume of groundwater removed:				
Total number of samples submitted to lab for analysis:									



## **FIGURES**

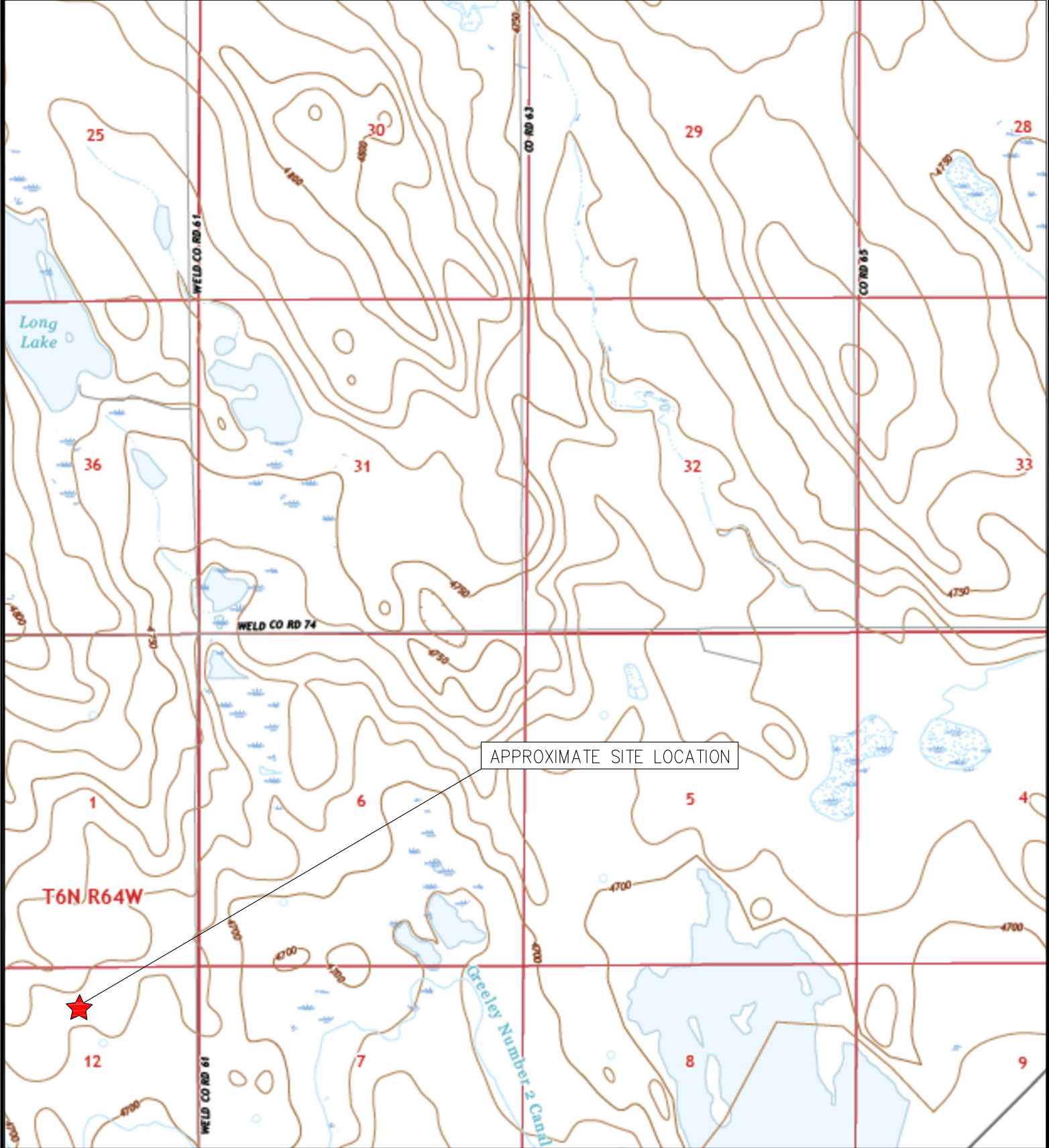
**Figure 1: Topographic Site Location Map**

**Figure 2: Aerial Site Location Map**

**Figure 3: Soil Analytical Map**

**Figure 4: Polycyclic Aromatic Hydrocarbons (PAH) Map**

**Figure 5: Metals in Soil Map**



APPROXIMATE SITE LOCATION

T6N/R64W



TOPOGRAPHIC SITE LOCATION MAP  
 STORER A #12-2  
 CLOSURE ASSESSMENT  
 40.506220 / -104.495530  
 NW¼ NE¼ SEC.12 T6N R64W 6PM  
 WELD COUNTY, COLORADO  
 API # 05-123-23275  
 REMEDIATION # 33867



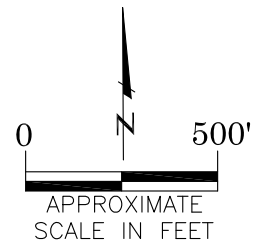
**EAGLE**  
 ENVIRONMENTAL  
 CONSULTING, LLC

8000 W 44th Ave, Wheat Ridge, CO 80033  
 Ph: 303-433-0479 • F: 303-325-5449



**LEGEND**

- STORER A #12-2 WELLHEAD
- ASSOCIATED SEPARATOR
- APPROXIMATE FLOWLINE LOCATION (ABANDONED IN PLACE)



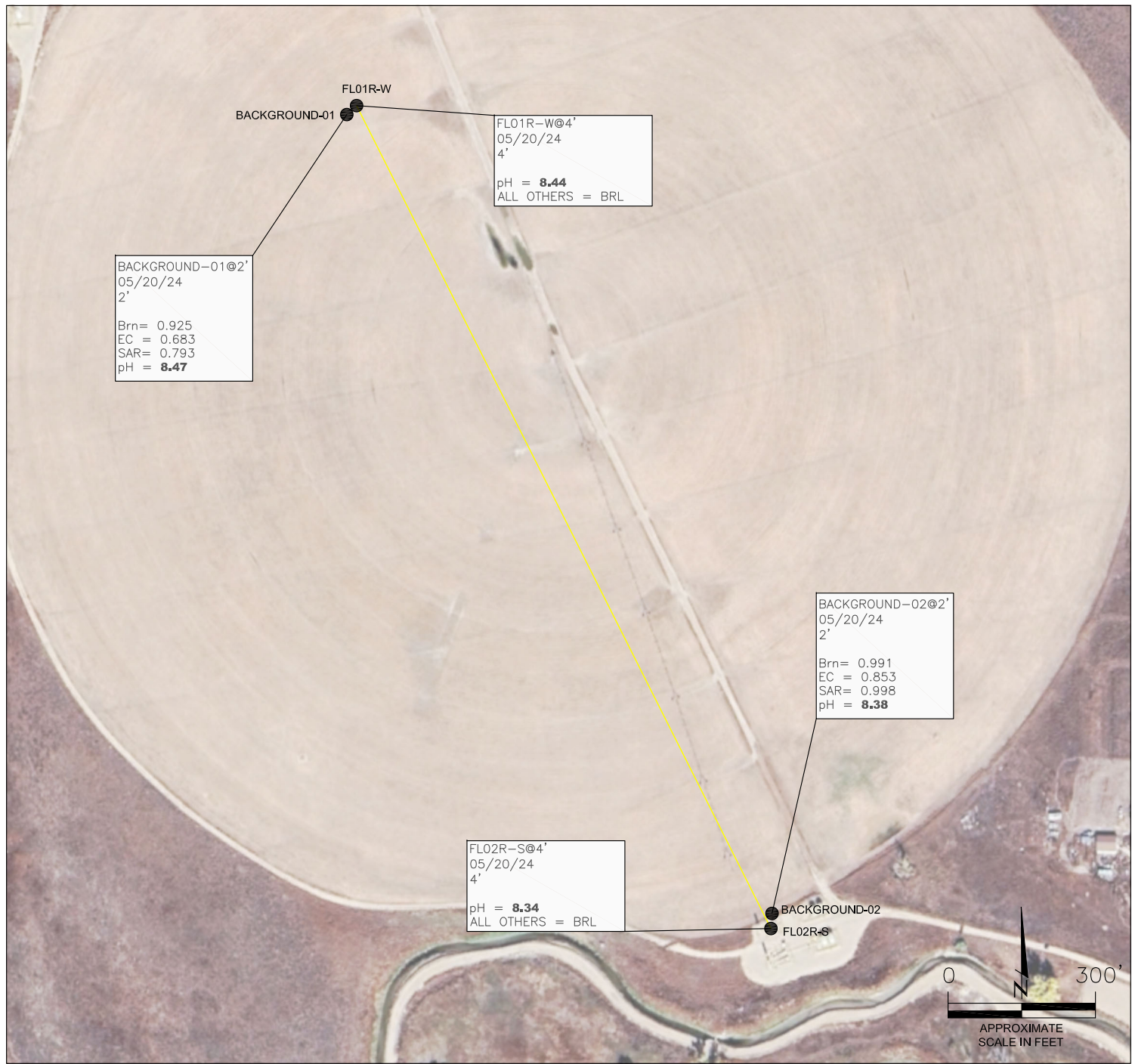
AERIAL SITE LOCATION MAP  
 STORER A #12-2  
 CLOSURE ASSESSMENT  
 40.506220 / -104.495530  
 NW¼ NE¼ SEC.12 T6N R64W 6PM  
 WELD COUNTY, COLORADO  
 API # 05-123-23275  
 REMEDIATION # 33867

FIGURE NO.  
2

DRAWN BY:  
EG



**EAGLE**  
 ENVIRONMENTAL  
 CONSULTING, LLC  
 8000 W 44th Ave, Wheat Ridge, CO 80033  
 Ph: 303-433-0479 • F: 303-325-5449



BACKGROUND-01@2'  
05/20/24  
2'

Brn= 0.925  
EC = 0.683  
SAR= 0.793  
pH = **8.47**

FL01R-W@4'  
05/20/24  
4'

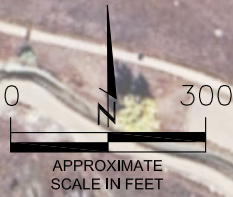
pH = **8.44**  
ALL OTHERS = BRL

BACKGROUND-02@2'  
05/20/24  
2'

Brn= 0.991  
EC = 0.853  
SAR= 0.998  
pH = **8.38**

FL02R-S@4'  
05/20/24  
4'

pH = **8.34**  
ALL OTHERS = BRL



**LEGEND**

- APPROXIMATE FLOWLINE LOCATION (ABANDONED IN PLACE)
- APPROXIMATE LOCATION OF SOIL SAMPLES SUBMITTED FOR LABORATORY ANALYSIS

**PARAMETERS**

**SAMPLE LOCATION**  
DATE  
DEPTH (FEET)  
B = BENZENE (mg/kg)  
T = TOLUENE (mg/kg)  
E = ETHYLBENZENE (mg/kg)  
X = TOTAL XYLENES (mg/kg)  
N = NAPHTHALENE (mg/kg)  
G = TPH-GRO (mg/kg)  
D = TPH-DRO (mg/kg)  
O = TPH-ORO (mg/kg)  
1,2,4-TMB = 1,2,4 TRIMETHYLBENZENE (mg/kg)  
1,3,5-TMB = 1,3,5 TRIMETHYLBENZENE (mg/kg)  
Brn= BORON (mg/L)  
pH = pH (pH UNITS)  
SAR= SODIUM ADSORPTION RATIO  
EC = SPECIFIC CONDUCTANCE (mmhos/cm)

mg/kg = MILLIGRAMS PER KILOGRAM  
mg/L = MILLIGRAMS PER LITER  
mmhos/cm = MILLIMHOS PER CENTIMETER

BRL = BELOW REGULATORY LIMITS

TPH-GRO = TOTAL PETROLEUM HYDROCARBONS - GASOLINE RANGE ORGANICS  
TPH-DRO = TOTAL PETROLEUM HYDROCARBONS - DIESEL RANGE ORGANICS  
TPH-ORO = TOTAL PETROLEUM HYDROCARBONS - OIL RANGE ORGANICS

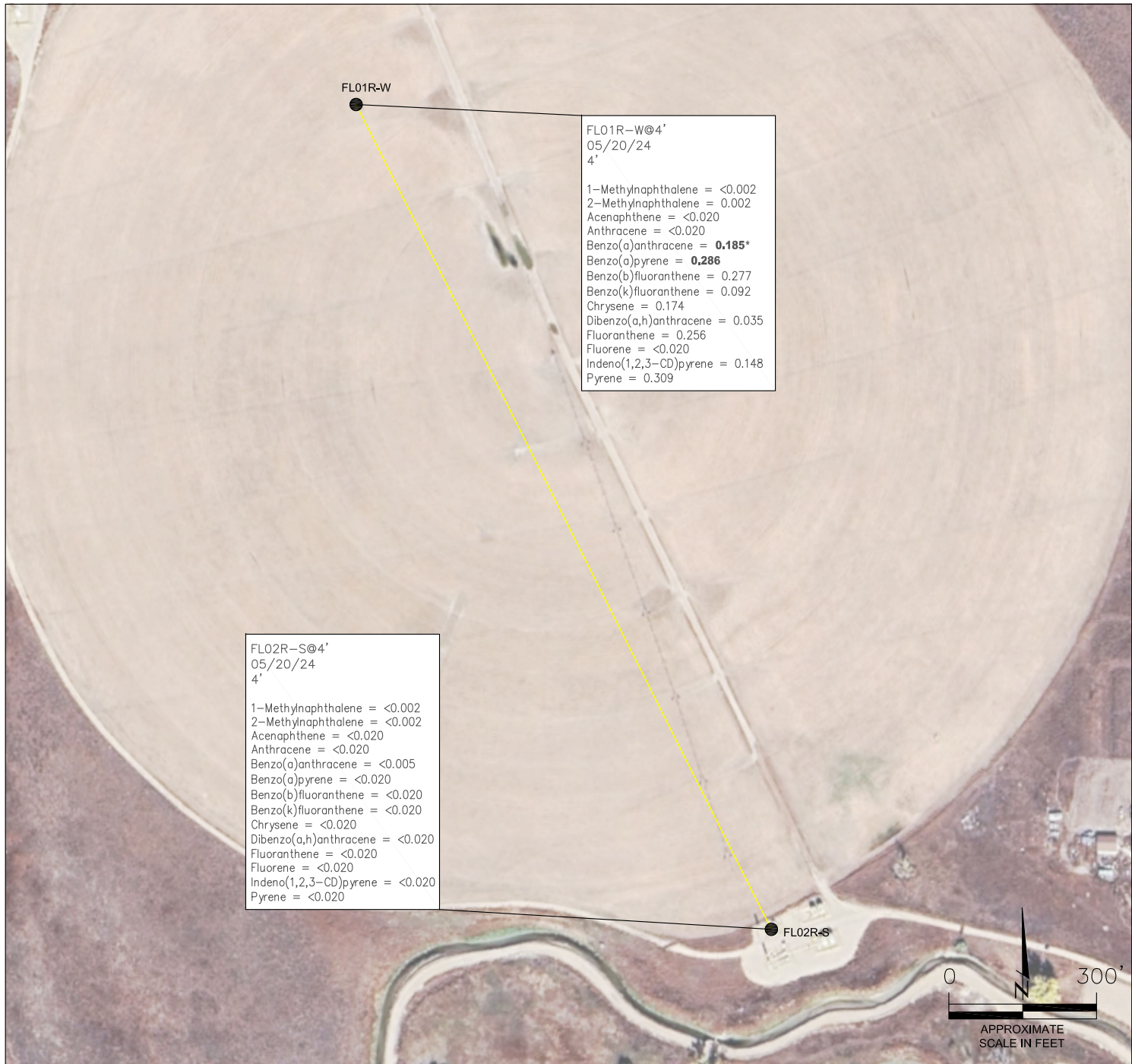
NOTES:  
VALUES PRESENTED IN **BOLD** EXCEED ECMC TABLE 915-1 REGULATORY LIMITS.

ECMC = ENERGY & CARBON MANAGEMENT COMMISSION

SOIL ANALYTICAL MAP  
STORER A #12-2  
CLOSURE ASSESSMENT  
40.506220 / -104.495530  
NW¼ NE¼ SEC.12 T6N R64W 6PM  
WELD COUNTY, COLORADO  
API # 05-123-23275  
REMEDATION # 33867

FIGURE NO.  
3  
DRAWN BY:  
RA

**EAGLE**  
ENVIRONMENTAL  
CONSULTING, LLC  
8000 W 44th Ave, Wheat Ridge, CO 80033  
Ph: 303-433-0479 • F: 303-325-5449



FL01R-W

FL01R-W@4'  
05/20/24  
4'

1-Methylnaphthalene = <0.002  
2-Methylnaphthalene = 0.002  
Acenaphthene = <0.020  
Anthracene = <0.020  
Benzo(a)anthracene = **0.185\***  
Benzo(a)pyrene = **0.286**  
Benzo(b)fluoranthene = 0.277  
Benzo(k)fluoranthene = 0.092  
Chrysene = 0.174  
Dibenzo(a,h)anthracene = 0.035  
Fluoranthene = 0.256  
Fluorene = <0.020  
Indeno(1,2,3-CD)pyrene = 0.148  
Pyrene = 0.309

FL02R-S@4'  
05/20/24  
4'

1-Methylnaphthalene = <0.002  
2-Methylnaphthalene = <0.002  
Acenaphthene = <0.020  
Anthracene = <0.020  
Benzo(a)anthracene = <0.005  
Benzo(a)pyrene = <0.020  
Benzo(b)fluoranthene = <0.020  
Benzo(k)fluoranthene = <0.020  
Chrysene = <0.020  
Dibenzo(a,h)anthracene = <0.020  
Fluoranthene = <0.020  
Fluorene = <0.020  
Indeno(1,2,3-CD)pyrene = <0.020  
Pyrene = <0.020

FL02R-S



**LEGEND**

- APPROXIMATE FLOWLINE LOCATION (ABANDONED IN PLACE)
- APPROXIMATE LOCATION OF SOIL SAMPLES SUBMITTED FOR LABORATORY ANALYSIS

**PARAMETERS**

SAMPLE LOCATION  
DATE SAMPLE COLLECTED  
APPROXIMATE DEPTH

POLYCYCLIC AROMATIC HYDROCARBONS (PAHs) (mg/kg)

mg/kg = MILLIGRAMS PER KILOGRAM

NOTES:  
VALUES PRESENTED WITH A LESS THAN SYMBOL (<) DID NOT CONTAIN CONCENTRATIONS AT OR ABOVE LABORATORY DETECTION LIMITS.

VALUES PRESENTED IN **BOLD** EXCEED ECMC TABLE 915-1 REGULATORY LIMITS.

VALUES PRESENTED WITH AN ASTERISK (\*) EXCEED ECMC TABLE 915-1 GROUNDWATER SOIL SCREENING LEVELS, ONLY.

ECMC = ENERGY & CARBON MANAGEMENT COMMISSION

**POLYCYCLIC AROMATIC HYDROCARBONS MAP**

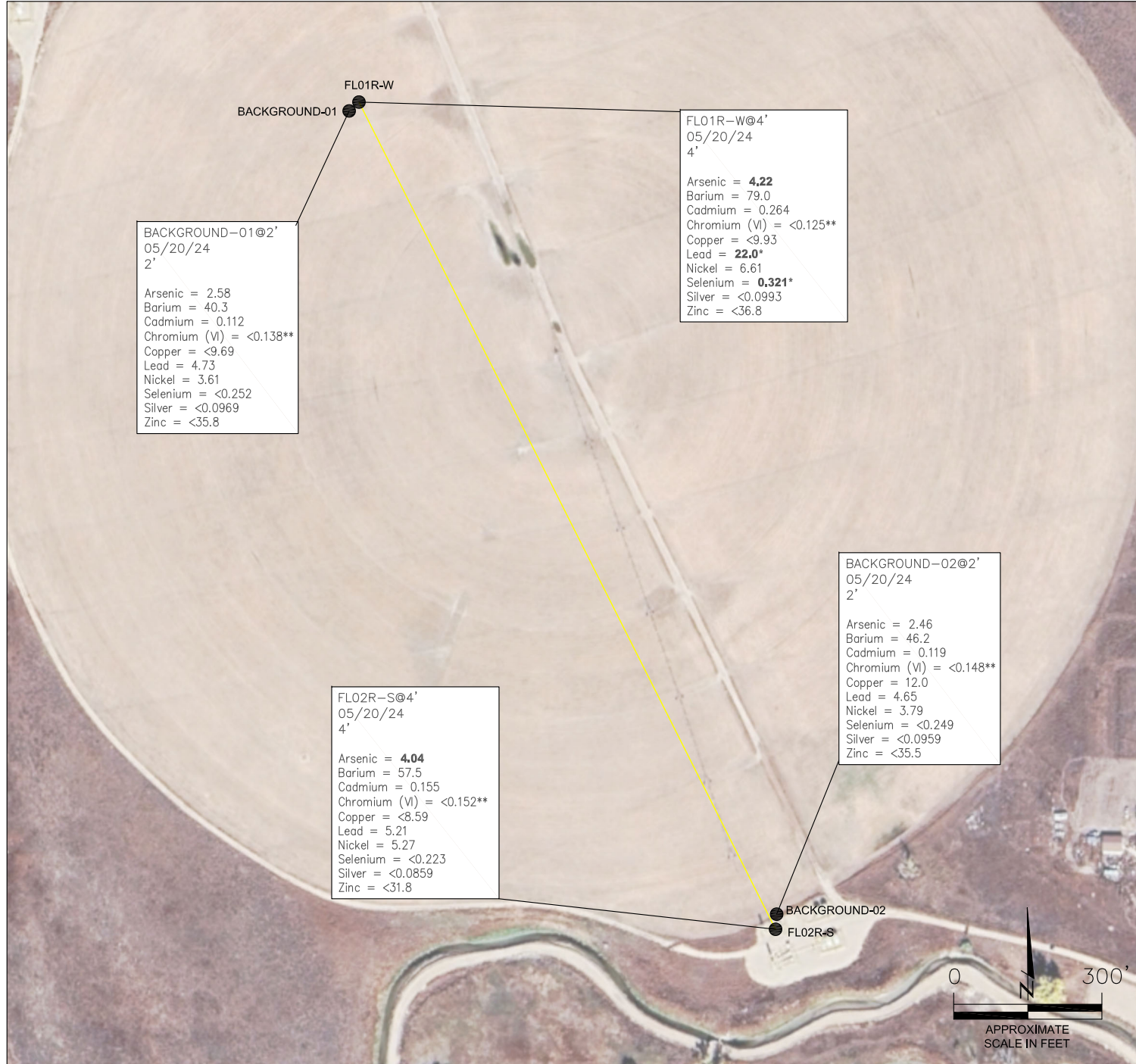
STORER A #12-2  
CLOSURE ASSESSMENT  
40.506220 / -104.495530  
NW¼ NE¼ SEC.12 T6N R64W 6PM  
WELD COUNTY, COLORADO  
API # 05-123-23275  
REMEDATION # 33867

FIGURE NO.  
4

DRAWN BY:  
RA



**EAGLE**  
ENVIRONMENTAL  
CONSULTING, LLC  
8000 W 44th Ave, Wheat Ridge, CO 80033  
Ph: 303-433-0479 • F: 303-325-5449



BACKGROUND-01@2'  
05/20/24  
2'

Arsenic = 2.58  
Barium = 40.3  
Cadmium = 0.112  
Chromium (VI) = <0.138\*\*  
Copper = <9.69  
Lead = 4.73  
Nickel = 3.61  
Selenium = <0.252  
Silver = <0.0969  
Zinc = <35.8

FL01R-W@4'  
05/20/24  
4'

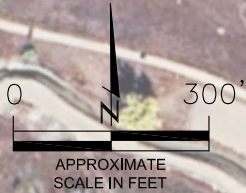
Arsenic = **4.22**  
Barium = 79.0  
Cadmium = 0.264  
Chromium (VI) = <0.125\*\*  
Copper = <9.93  
Lead = **22.0\***  
Nickel = 6.61  
Selenium = **0.321\***  
Silver = <0.0993  
Zinc = <36.8

BACKGROUND-02@2'  
05/20/24  
2'

Arsenic = 2.46  
Barium = 46.2  
Cadmium = 0.119  
Chromium (VI) = <0.148\*\*  
Copper = 12.0  
Lead = 4.65  
Nickel = 3.79  
Selenium = <0.249  
Silver = <0.0959  
Zinc = <35.5

FLO2R-S@4'  
05/20/24  
4'

Arsenic = **4.04**  
Barium = 57.5  
Cadmium = 0.155  
Chromium (VI) = <0.152\*\*  
Copper = <8.59  
Lead = 5.21  
Nickel = 5.27  
Selenium = <0.223  
Silver = <0.0859  
Zinc = <31.8



**LEGEND**

- APPROXIMATE FLOWLINE LOCATION (ABANDONED IN PLACE)
- APPROXIMATE LOCATION OF SOIL SAMPLES SUBMITTED FOR LABORATORY ANALYSIS

**PARAMETERS**

SAMPLE LOCATION  
DATE SAMPLE COLLECTED  
APPROXIMATE DEPTH  
Arsenic = (mg/kg)  
Barium = (mg/kg)  
Cadmium = (mg/kg)  
Chromium (VI) = (mg/kg)  
Copper = (mg/kg)  
Lead = (mg/kg)  
Nickel = (mg/kg)  
Selenium = (mg/kg)  
Silver = (mg/kg)  
Zinc = (mg/kg)

mg/kg = MILLIGRAMS PER KILOGRAM

NOTES:  
VALUES PRESENTED WITH A LESS THAN SYMBOL (<) DID NOT CONTAIN CONCENTRATIONS AT/OR ABOVE LABORATORY REPORTING LIMITS AND/OR MINIMUM DETECTION LIMITS.

ELEVATED METALS ARE NATURALLY OCCURRING IN COLORADO. LOCAL CLEAN-UP LEVELS ARE 1.25\*BACKGROUND HIGH CONCENTRATIONS WHERE APPLICABLE.

VALUES PRESENTED IN **BOLD** EXCEED ECMC TABLE 915-1 REGULATORY LIMITS AND APPLICABLE LOCAL CLEAN-UP LEVELS.

\*VALUES EXCEED ECMC TABLE 915-1 PROTECTION OF GROUNDWATER SOIL SCREENING LEVELS, ONLY.

\*\*ACHIEVABLE PRACTICAL QUANTITATIVE LIMITS FOR HEXAVALENT CHROMIUM (Cr VI) IN SOILS IS IN THE RANGE OF 0.1 TO 1 mg/kg.

ECMC = ENERGY & CARBON MANAGEMENT COMMISSION

METALS IN SOIL MAP  
STORER A #12-2  
CLOSURE ASSESSMENT  
40.506220 / -104.495530  
NW¼ NE¼ SEC.12 T6N R64W 6PM  
WELD COUNTY, COLORADO  
API # 05-123-23275  
REMEDATION # 33867

FIGURE NO.  
5

DRAWN BY:  
RA

**EAGLE**  
ENVIRONMENTAL  
CONSULTING, LLC  
8000 W 44th Ave, Wheat Ridge, CO 80033  
Ph: 303-433-0479 • F: 303-325-5449



## **TABLES**

**Table 1: Field Data Summary**

**Table 2: Summary of Volatile Organic Soil Chemistry Data**

**Table 3: Summary of PAH Soil Chemistry Data**

**Table 4: Summary of Soil Suitability for Reclamation**

**Table 5: Summary of Metals in Soil Chemistry Data**

**TABLE 1**  
**FIELD DATA SUMMARY TABLE**  
**NOBLE ENERGY 100322**  
**STORER A #12-2, WELD COUNTY, COLORADO**  
**REM # 33867**

Sample ID	Sample Date	Depth	GPS Data		VOC Concentration (ppm)
			Latitude	Longitude	
FL01R-W @ 4'	5/20/2024	4	40.506223	-104.495522	0.2
FL02R-S @ 4'	5/20/2024	4	40.501633	-104.492524	1.1
Background-01 @ 2'	5/20/2024	2	40.506158	-104.495585	0.7
Background-02 @ 2'	5/20/2024	2	40.501718	-104.492513	0.6

1. Global Positioning System (GPS) data is provided in decimal degrees using North American Datum (NAD) 83 UTMZone 13 North.

2. Volatile organic compound (VOC) concentrations are measured in the field using a photoionization detector (PID).

PDOP = Position Dilution of Precision

ppm = Parts per million

in. = Inches

ft. = Feet

bgs = Below ground surface

TABLE 2  
SUMMARY OF VOLATILE ORGANIC SOIL CHEMISTRY DATA  
NOBLE ENERGY 100322  
STORER A #12-2, WELD COUNTY, COLORADO  
REM # 33867

Sample ID	Sample Date	Depth (ft)	Benzene (mg/kg)	Toluene (mg/kg)	Ethyl-Benzene (mg/kg)	Xylenes (mg/kg)	1,2,4-Trimethyl-Benzene (mg/kg)	1,3,5-Trimethyl-Benzene (mg/kg)	Naphthalene (mg/kg)	TPH (mg/kg)	TPH GRO (mg/kg)	TPH DRO (mg/kg)	TPH ORO (mg/kg)
ECMC Table 915-1 Limits (Residential SSL)			1.2	490	5.8	58	30	27	2	500	500**		
ECMC Table 915-1 Limits (Protection of Groundwater SSL)			0.0026	0.69	0.78	9.9	0.0081	0.0087	0.0038	500	500**		
FLO1R-W @ 4'	5/20/2024	4	<0.00200	<0.00200	<0.00200	<0.00200	<0.00200	<0.00200	<0.00380	<500	<0.200	<25.0	<100
FLO2R-S @ 4'	5/20/2024	4	<0.00200	<0.00200	<0.00200	<0.00200	<0.00200	<0.00200	<0.00380	<500	<0.200	<25.0	<100

1. Bold values are equal to or exceed the ECMC Table 915-1 limit(s)
2. Red & blue highlighted soil analytical values indicate an exceedance of the referenced soil screening level (SSL)
3. \* Indicates laboratory minimum detection limit in excess of SSL
4. \*\* Summation of GRO+DRO+ORO must be less than 500 mg/kg

TABLE 3  
SUMMARY OF POLYCYCLIC AROMATIC HYDROCARBON SOIL CHEMISTRY DATA  
NOBLE ENERGY 100322  
STORER A #12-2, WELD COUNTY, COLORADO  
REM # 33867

Sample ID	Sample Date	Depth (ft)	Acenaphthene (mg/kg)	Anthracene (mg/kg)	Benzo (a) Anthracene (mg/kg)	Benzo (a) Pyrene (mg/kg)	Benzo (b) Fluoranthene (mg/kg)	Benzo (k) Fluoranthene (mg/kg)	Chrysene (mg/kg)	Dibenzo (a,h) Anthracene (mg/kg)	Fluoranthene (mg/kg)	Fluorene (mg/kg)	Indeno (1,2,3-cd) Pyrene (mg/kg)	Pyrene (mg/kg)	1-Methyl - Naphthalene (mg/kg)	2-Methyl- Naphthalene (mg/kg)
ECMC Table 915-1 Limits (Residential SSL)			360	1800	1.1	0.11	1.1	11	110	0.11	240	240	1.1	180	18	24
ECMC Table 915-1 Limits (Protection of Groundwater SSL)			0.55	5.8	0.011	0.24	0.3	2.9	9	0.096	8.9	0.54	0.98	1.3	0.006	0.019
FL01R-W @ 4'	5/20/2024	4	<0.020	<0.020	<b>0.185</b>	<b>0.286</b>	0.277	0.092	0.174	0.035	0.256	<0.020	0.148	0.309	<0.002	0.002
FL02R-S @ 4'	5/20/2024	4	<0.020	<0.020	<0.005	<0.020	<0.020	<0.020	<0.020	<0.020	<0.020	<0.020	<0.020	<0.020	<0.002	<0.002

1. Bold values are equal to or exceed the ECMC Table 915-1 limit(s)

2. Red & blue highlighted soil analytical values indicate an exceedance of the referenced soil screening level (SSL)

3. \* Indicates laboratory minimum detection limit in excess of SSL

TABLE 4  
SUMMARY OF SOIL SUITABILITY FOR RECLAMATION  
NOBLE ENERGY 100322  
STORER A #12-2, WELD COUNTY, COLORADO  
REM # 33867

Sample ID	Sample Date	Depth (ft)	pH (Standard Units)	EC (mmhos/cm)	SAR (Standard Units)	Boron (mg/L)
ECMC Table 915-1 Soil Suitability Limits			6 - 8.3	<4	<6	2
FL01R-W @ 4'	5/20/2024	4	<b>8.44</b>	0.409	0.984	0.199
FL02R-S @ 4'	5/20/2024	4	<b>8.34</b>	0.208	0.0736	0.119
Background-01 @ 2'	5/20/2024	2	<b>8.47</b>	0.683	0.793	0.925
Background-02 @ 2'	5/20/2024	2	<b>8.38</b>	0.853	0.998	0.991
Maximum Background Concentration			<b>8.47</b>	0.853	0.998	0.991
Average Background Concentration			<b>8.43</b>	0.768	0.896	0.958

1. Bold values are equal to or exceed the ECMC Table 915-1 limit(s)
2. Blue highlighted soil analytical values indicate a regulatory exceedance

TABLE 5  
SUMMARY OF METALS IN SOIL CHEMISTRY DATA  
NOBLE ENERGY 100322  
STORER A #12-2, WELD COUNTY, COLORADO  
REM # 33867

Sample ID	Sample Date	Depth (ft)	Arsenic (mg/kg)	Barium (mg/kg)	Cadmium (mg/kg)	Chromium (VI) (mg/kg)	Copper (mg/kg)	Lead (mg/kg)	Nickel (mg/kg)	Selenium (mg/kg)	Silver (mg/kg)	Zinc (mg/kg)
ECMC Table 915-1 Limits (Residential SSL)			0.68	15000	71	0.3	3100	400	1500	390	390	23000
ECMC Table 915-1 Limits (Protection of Groundwater SSL)			0.29	82	0.38	0.00067	46	14	26	0.26	0.8	370
FL01R-W @ 4'	5/20/2024	4	<b>4.22</b>	79.0	0.264	<0.125*	<9.93	<b>22.0</b>	6.61	<b>0.321</b>	<0.0993	<36.8
FL02R-S @ 4'	5/20/2024	4	<b>4.04</b>	57.5	0.155	<0.152*	<8.59	5.21	5.27	<0.223	<0.0859	<31.8
Background-01 @ 2'	5/20/2024	2	<b>2.58</b>	40.3	0.112	<0.138*	<9.69	4.73	3.61	<0.252	<0.0969	<35.8
Background-02 @ 2'	5/20/2024	2	<b>2.46</b>	46.2	0.119	<0.148*	12.0	4.65	3.79	<0.249	<0.0959	<35.5
Maximum Background Concentration			<b>2.58</b>	46.2	0.119		12.0	4.73	3.79			
125% Maximum Background Concentration			<b>3.23</b>	57.8	0.149		15.0	5.91	4.74			

1. Bold values are equal to or exceed the ECMC Table 915-1 limit(s)
  2. Red & blue highlighted soil analytical values indicate an exceedance of the referenced soil screening level (SSL)
- \* Indicates laboratory minimum detection limit in excess of SSL



## **ATTACHMENT A**

### **Photo Log**

Storer A #12-2  
API # 05-123-23275  
Remediation # 33867

Closure Assessment

May 2024

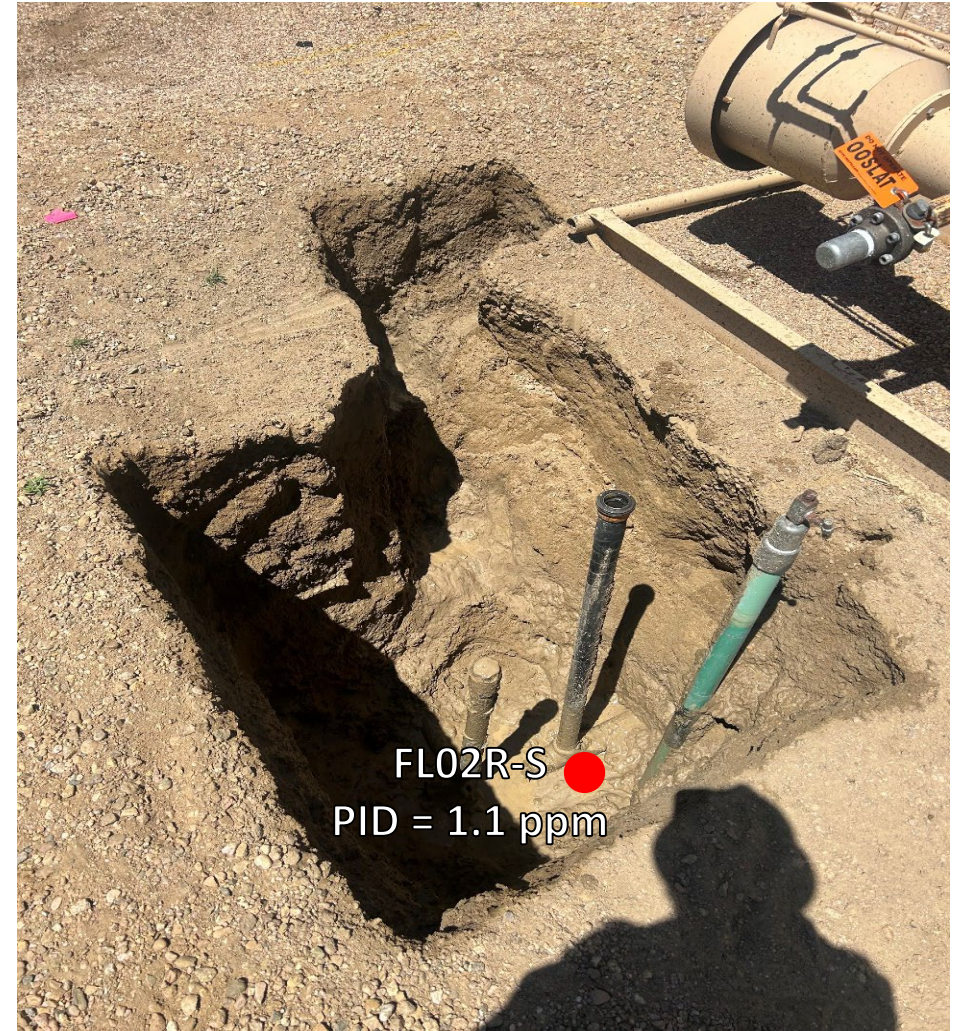


# Flowline Assessment – 05/20/24



Looking south at flowline Pt A at wellhead

No petroleum hydrocarbon staining or odor observed



Looking west at flowline Pt B/terminus at separator

No petroleum hydrocarbon staining or odor observed. Water in excavation from hydrovac, not groundwater



## **ATTACHMENT B**

### **Laboratory Analytical Report**



June 04, 2024

Eagle Environmental Consulting, LLC

Andrew Newberry

8000 W 44th Ave

Wheat Ridge CO 80033

Project Name - Noble - Storer A #12-2

Project Number - [none]

Attached are your analytical results for Noble - Storer A #12-2 received by Origins Laboratory, Inc. May 20, 2024. This project is associated with Origins project number Y405606-01.

The analytical results in the following report were analyzed under the guidelines of EPA Methods. These methods are identified as follows; "SW" are defined in SW-846, "EPA" are defined in 40CFR part 136 and "SM" are defined in the most current revision of Standard Methods For the Examination of Water and Wastewater.

The analytical results apply specifically to the samples and analyses specified per the attached Chain of Custody. As such, this report shall not be reproduced except in full, without the written approval of Origin's laboratory.

Unless otherwise noted, the analytical results for all soil samples are reported on a wet weight basis. All analytical analyses were performed under NELAP guidelines unless noted by a data qualifier.

Any holding time exceedances, deviations from the method specifications or deviations from Origins Laboratory's Standard Operating Procedures are outlined in the case narrative.

Thank you for selecting Origins for your analytical needs. Please contact us with any questions concerning this report, or if we can help with anything at all.

Origins Laboratory, Inc.  
303.433.1322  
o-squad@oelabinc.com



1725 Elk Place, Denver, CO 80211 | Phone: 303.433.1322 | Fax: 303.265.9645

Eagle Environmental Consulting, LLC  
8000 W 44th Ave  
Wheat Ridge CO 80033

Andrew Newberry  
Project Number: [none]  
Project: Noble - Storer A #12-2

CROSS REFERENCE REPORT

Sample ID	Laboratory ID	Matrix	Date Sampled	Date Received
FL01R-W@4'	Y405606-01	Soil	May 20, 2024 10:41	05/20/2024 15:41
FL02R-S@4'	Y405606-02	Soil	May 20, 2024 11:48	05/20/2024 15:41
Background-01@2'	Y405606-03	Soil	May 20, 2024 10:49	05/20/2024 15:41
Background-02@2'	Y405606-04	Soil	May 20, 2024 11:54	05/20/2024 15:41

Origins Laboratory, Inc.



*The results in this report apply to the samples analyzed in accordance with the chain of custody document. This analytical report must be reproduced in its entirety.*



Eagle Environmental Consulting, LLC  
 8000 W 44th Ave  
 Wheat Ridge CO 80033

Andrew Newberry  
 Project Number: [none]  
 Project: Noble - Storer A #12-2

Origins Laboratory

F-012207-01-R1  
 Effective Date: 01/09/12

**Sample Receipt Checklist**

Origins Work Order: 44056000

Client: Eagle  
 Client Project ID: Storer A 12-2

Checklist Completed by: EAD/SL  
 Date/time completed: 5/20/24

Shipped Via: HO  
 (UPS, FedEx, Hand Delivered, Pick-up, etc.)  
 Airbill #: N/A

Matrix(s) Received: (Check all that apply):  Soil/Solid  Water  Other: \_\_\_\_\_

Cooler Number/Temperature: 1417 °C / \_\_\_\_\_ °C / \_\_\_\_\_ °C (Describe) \_\_\_\_\_ °C

Thermometer ID: 1005

Requirement Description	Yes	No	N/A	Comments (if any)
If samples require cooling, was the temperature between 0°C to ≤ 6°C <sup>(1)</sup> ?	/			
Is there ice present (document if blue ice is used)	/			
Are custody seals present on cooler? (if so, document in comments if they are signed and dated, broken or intact)		/		
Are custody seals present on each sample container? (if so, document in comments if they are signed and dated, broken or intact)		/		
Were all samples received intact <sup>(1)</sup> ?	/			
Was adequate sample volume provided <sup>(1)</sup> ?	/			
Are short holding time analytes or samples with HTs due within 48 hours present <sup>(1)</sup> ?		/		
Is a chain-of-custody (COC) present and filled out completely <sup>(1)</sup> ?	/			
Does the COC agree with the number and type of sample bottles received <sup>(1)</sup> ?	/			
Do the sample IDs on the bottle labels match the COC <sup>(1)</sup> ?	/			
Is the COC properly relinquished by the client with date and time recorded <sup>(1)</sup> ?	/			
For volatiles in water – is there headspace (> ¼ inch bubble) present? If yes, contact client and note in narrative.			/	
Are samples preserved that require preservation and was it checked <sup>(1)</sup> ? (note ID of confirmation instrument used in comments) / (preservation is not confirmed for subcontracted analyses in order to insure sample integrity)/(pH <2 for samples preserved with HNO <sub>3</sub> , HCL, H <sub>2</sub> SO <sub>4</sub> ) / (pH >10 for samples preserved with NaAsO <sub>2</sub> +NaOH, ZnAc+NaOH)			/	
Additional Comments (if any):				

<sup>(1)</sup>If NO, then contact the client before proceeding with analysis and note date/time and person contacted as well as the corrective action to in the additional comments (above) and the case narrative.

Reviewed by (Project Manager) [Signature]

Date/Time Reviewed 5/21/24

Origins Laboratory, Inc.

[Signature]

The results in this report apply to the samples analyzed in accordance with the chain of custody document. This analytical report must be reproduced in its entirety.

Eagle Environmental Consulting, LLC  
 8000 W 44th Ave  
 Wheat Ridge CO 80033

Andrew Newberry  
 Project Number: [none]  
 Project: Noble - Storer A #12-2

**FL01R-W@4'**

**5/20/2024 10:41:00AM**

Analyte	Result	Min Detection Limit	Reporting Limit	Units	Dilution	Batch	Prepared	Analyzed	Notes
---------	--------	---------------------	-----------------	-------	----------	-------	----------	----------	-------

**Origins Laboratory, Inc.**  
**Y405606-01 (Soil)**

**Boron (DTPA Sorbitol)**

Boron	0.199		0.0993	mg/L	1	B4E2109	05/21/2024	05/22/2024	
-------	-------	--	--------	------	---	---------	------------	------------	--

**DRO/ORO by EPA 8015D**

Diesel (C10-C28)	ND		25.0	mg/kg	1	B4E2201	05/22/2024	05/24/2024	Ua
Residual Range Organics (C28-C40)	ND		100	"	"	"	"	"	Ua

Surrogate: o-Terphenyl	83.0 %		50-150			"	"	"	
------------------------	--------	--	--------	--	--	---	---	---	--

**GBTEX+TMBs by 8260D**

1,2,4-Trimethylbenzene	ND		0.00200	mg/kg	1	B4E2103	05/21/2024	05/22/2024	Ua
1,3,5-Trimethylbenzene	ND		0.00200	"	"	"	"	"	Ua
Benzene	ND		0.00200	"	"	"	"	"	Ua
Ethylbenzene	ND		0.00200	"	"	"	"	"	Ua
Naphthalene	ND		0.00380	"	"	"	"	"	Ua
Toluene	ND		0.00200	"	"	"	"	"	Ua
Xylenes, total	ND		0.00200	"	"	"	"	"	Ua
Gasoline Range Hydrocarbons	ND		0.200	"	"	"	"	"	Ua

Origins Laboratory, Inc.



The results in this report apply to the samples analyzed in accordance with the chain of custody document. This analytical report must be reproduced in its entirety.

Eagle Environmental Consulting, LLC  
 8000 W 44th Ave  
 Wheat Ridge CO 80033

Andrew Newberry  
 Project Number: [none]  
 Project: Noble - Storer A #12-2

**FL01R-W@4'**

**5/20/2024 10:41:00AM**

Analyte	Result	Min Detection Limit	Reporting Limit	Units	Dilution	Batch	Prepared	Analyzed	Notes
---------	--------	---------------------	-----------------	-------	----------	-------	----------	----------	-------

**Origins Laboratory, Inc.**  
**Y405606-01 (Soil)**

**GBTEX+TMBs by 8260D**

Surrogate: 1,2-Dichloroethane-d4	104 %		70-130			B4E21 03	05/21/2024	05/22/2024	
Surrogate: Toluene-d8	98.5 %		70-130			"	"	"	
Surrogate: 4-Bromofluorobenzene	110 %		70-130			"	"	"	

**Metals by Saturated Paste by EPA 6010**

Calcium	1.70		0.499	meq/L	10	[CALC]	05/22/2024	05/23/2024	
Magnesium	0.871		0.823	"	"	"	"	"	
Sodium	1.12		0.435	"	"	"	"	"	

**PAH by EPA 8270E**

1-Methylnaphthalene	ND		0.002	mg/kg	1	B4E2133	05/21/2024	05/25/2024	Ua
2-Methylnaphthalene	0.002		0.002	"	"	"	"	"	
Acenaphthene	ND		0.020	"	"	"	"	"	Ua
Anthracene	ND		0.020	"	"	"	"	"	Ua
Benzo (a) anthracene	0.185		0.005	"	"	"	"	"	
Benzo (a) pyrene	0.286		0.020	"	"	"	"	"	
Benzo (b) fluoranthene	0.277		0.020	"	"	"	"	"	
Benzo (k) fluoranthene	0.092		0.020	"	"	"	"	"	
Chrysene	0.174		0.020	"	"	"	"	"	
Dibenz (a,h) anthracene	0.035		0.020	"	"	"	"	"	
Fluoranthene	0.256		0.020	"	"	"	"	"	

Origins Laboratory, Inc.



The results in this report apply to the samples analyzed in accordance with the chain of custody document. This analytical report must be reproduced in its entirety.

Eagle Environmental Consulting, LLC  
 8000 W 44th Ave  
 Wheat Ridge CO 80033

Andrew Newberry  
 Project Number: [none]  
 Project: Noble - Storer A #12-2

**FL01R-W@4'**

**5/20/2024 10:41:00AM**

Analyte	Result	Min Detection Limit	Reporting Limit	Units	Dilution	Batch	Prepared	Analyzed	Notes
---------	--------	---------------------	-----------------	-------	----------	-------	----------	----------	-------

**Origins Laboratory, Inc.**  
**Y405606-01 (Soil)**

**PAH by EPA 8270E**

Fluorene	ND		0.020	mg/kg	1	B4E2133	05/21/2024	05/25/2024	Ua
Indeno (1,2,3-cd) pyrene	<b>0.148</b>		0.020	"	"	"	"	"	
Pyrene	<b>0.309</b>		0.020	"	"	"	"	"	

Surrogate: Fluorene-d10	99.7 %		60-130			"	"	"	
Surrogate: Anthracene-d10	95.1 %		60-130			"	"	"	
Surrogate: Pyrene-d10	97.2 %		60-130			"	"	"	
Surrogate: Benzo (a) pyrene-d12	104 %		60-130			"	"	"	

**pH in Soil by 9045D**

pH	<b>8.44</b>			pH Units	1	B4E2227	05/22/2024	05/23/2024	
----	-------------	--	--	----------	---	---------	------------	------------	--

**SAR by 20B Saturated Paste**

SAR	<b>0.984</b>		0.0100	SAR	1	B4E2216	05/22/2024	05/23/2024	
-----	--------------	--	--------	-----	---	---------	------------	------------	--

**Specific Conductance Mod. 9050A**

Specific Conductance (EC)	<b>0.409</b>		0.00500	mmhos/cm	1	B4E2227	05/22/2024	05/23/2024	
---------------------------	--------------	--	---------	----------	---	---------	------------	------------	--

**Table 915 metals by EPA 6020B**

Arsenic	<b>4.22</b>		0.288	mg/kg	10	B4E2044	05/21/2024	05/22/2024	
---------	-------------	--	-------	-------	----	---------	------------	------------	--

Origins Laboratory, Inc.



The results in this report apply to the samples analyzed in accordance with the chain of custody document. This analytical report must be reproduced in its entirety.

Eagle Environmental Consulting, LLC  
 8000 W 44th Ave  
 Wheat Ridge CO 80033

Andrew Newberry  
 Project Number: [none]  
 Project: Noble - Storer A #12-2

**FL01R-W@4'**

**5/20/2024 10:41:00AM**

Analyte	Result	Min Detection Limit	Reporting Limit	Units	Dilution	Batch	Prepared	Analyzed	Notes
---------	--------	---------------------	-----------------	-------	----------	-------	----------	----------	-------

**Origins Laboratory, Inc.**  
**Y405606-01 (Soil)**

**Table 915 metals by EPA 6020B**

Barium	79.0		9.93	mg/kg	10	B4E2044	05/21/2024	05/22/2024	
Cadmium	0.264		0.0993	"	"	"	"	"	
Copper	ND		9.93	"	"	"	"	"	
Lead	22.0		0.993	"	"	"	"	"	
Nickel	6.61		0.993	"	"	"	"	"	
Selenium	0.321		0.258	"	"	"	"	"	
Silver	ND		0.0993	"	"	"	"	"	
Zinc	ND		36.8	"	"	"	"	"	

**Total Metals by 7196A**

Hexavalent Chromium	ND	0.125	0.312	mg/kg dry	1	2618088	05/29/2024	05/29/2024	U
---------------------	----	-------	-------	-----------	---	---------	------------	------------	---

Origins Laboratory, Inc.



*The results in this report apply to the samples analyzed in accordance with the chain of custody document. This analytical report must be reproduced in its entirety.*

Eagle Environmental Consulting, LLC  
 8000 W 44th Ave  
 Wheat Ridge CO 80033

Andrew Newberry  
 Project Number: [none]  
 Project: Noble - Storer A #12-2

**FL02R-S@4'**

**5/20/2024 11:48:00AM**

Analyte	Result	Min Detection Limit	Reporting Limit	Units	Dilution	Batch	Prepared	Analyzed	Notes
---------	--------	---------------------	-----------------	-------	----------	-------	----------	----------	-------

**Origins Laboratory, Inc.**  
**Y405606-02 (Soil)**

**Boron (DTPA Sorbitol)**

Boron	0.119		0.0988	mg/L	1	B4E2109	05/21/2024	05/22/2024	
-------	-------	--	--------	------	---	---------	------------	------------	--

**DRO/ORO by EPA 8015D**

Diesel (C10-C28)	ND		25.0	mg/kg	1	B4E2201	05/22/2024	05/24/2024	Ua
Residual Range Organics (C28-C40)	ND		100	"	"	"	"	"	Ua

Surrogate: o-Terphenyl	85.9 %		50-150			"	"	"	
------------------------	--------	--	--------	--	--	---	---	---	--

**GBTEX+TMBs by 8260D**

1,2,4-Trimethylbenzene	ND		0.00200	mg/kg	1	B4E2103	05/21/2024	05/22/2024	Ua
1,3,5-Trimethylbenzene	ND		0.00200	"	"	"	"	"	Ua
Benzene	ND		0.00200	"	"	"	"	"	Ua
Ethylbenzene	ND		0.00200	"	"	"	"	"	Ua
Naphthalene	ND		0.00380	"	"	"	"	"	Ua
Toluene	ND		0.00200	"	"	"	"	"	Ua
Xylenes, total	ND		0.00200	"	"	"	"	"	Ua
Gasoline Range Hydrocarbons	ND		0.200	"	"	"	"	"	Ua

Origins Laboratory, Inc.



The results in this report apply to the samples analyzed in accordance with the chain of custody document. This analytical report must be reproduced in its entirety.

Eagle Environmental Consulting, LLC  
 8000 W 44th Ave  
 Wheat Ridge CO 80033

Andrew Newberry  
 Project Number: [none]  
 Project: Noble - Storer A #12-2

**FL02R-S@4'**

**5/20/2024 11:48:00AM**

Analyte	Result	Min Detection Limit	Reporting Limit	Units	Dilution	Batch	Prepared	Analyzed	Notes
---------	--------	---------------------	-----------------	-------	----------	-------	----------	----------	-------

**Origins Laboratory, Inc.**  
**Y405606-02 (Soil)**

**GBTEX+TMBs by 8260D**

Surrogate: 1,2-Dichloroethane-d4	102 %		70-130			B4E21 03	05/21/2024	05/22/2024	
Surrogate: Toluene-d8	97.3 %		70-130			"	"	"	
Surrogate: 4-Bromofluorobenzene	109 %		70-130			"	"	"	

**Metals by Saturated Paste by EPA 6010**

Calcium	1.22		0.499	meq/L	10	[CALC]	05/22/2024	05/23/2024	
Magnesium	ND		0.823	"	"	"	"	"	
Sodium	ND		0.435	"	"	"	"	"	

**PAH by EPA 8270E**

1-Methylnaphthalene	ND		0.002	mg/kg	1	B4E2133	05/21/2024	05/25/2024	Ua
2-Methylnaphthalene	ND		0.002	"	"	"	"	"	Ua
Acenaphthene	ND		0.020	"	"	"	"	"	Ua
Anthracene	ND		0.020	"	"	"	"	"	Ua
Benzo (a) anthracene	ND		0.005	"	"	"	"	"	Ua
Benzo (a) pyrene	ND		0.020	"	"	"	"	"	Ua
Benzo (b) fluoranthene	ND		0.020	"	"	"	"	"	Ua
Benzo (k) fluoranthene	ND		0.020	"	"	"	"	"	Ua
Chrysene	ND		0.020	"	"	"	"	"	Ua
Dibenz (a,h) anthracene	ND		0.020	"	"	"	"	"	Ua

Origins Laboratory, Inc.



The results in this report apply to the samples analyzed in accordance with the chain of custody document. This analytical report must be reproduced in its entirety.

Eagle Environmental Consulting, LLC  
 8000 W 44th Ave  
 Wheat Ridge CO 80033

Andrew Newberry  
 Project Number: [none]  
 Project: Noble - Storer A #12-2

**FL02R-S@4'**

**5/20/2024 11:48:00AM**

Analyte	Result	Min Detection Limit	Reporting Limit	Units	Dilution	Batch	Prepared	Analyzed	Notes
---------	--------	---------------------	-----------------	-------	----------	-------	----------	----------	-------

**Origins Laboratory, Inc.**  
**Y405606-02 (Soil)**

**PAH by EPA 8270E**

Fluoranthene	ND		0.020	mg/kg	1	B4E2133	05/21/2024	05/25/2024	Ua
Fluorene	ND		0.020	"	"	"	"	"	Ua
Indeno (1,2,3-cd) pyrene	ND		0.020	"	"	"	"	"	Ua
Pyrene	ND		0.020	"	"	"	"	"	Ua

Surrogate: Fluorene-d10	102 %		60-130			"	"	"	
Surrogate: Anthracene-d10	111 %		60-130			"	"	"	
Surrogate: Pyrene-d10	106 %		60-130			"	"	"	
Surrogate: Benzo (a) pyrene-d12	106 %		60-130			"	"	"	

**pH in Soil by 9045D**

pH	8.34			pH Units	1	B4E2227	05/22/2024	05/23/2024	
----	------	--	--	----------	---	---------	------------	------------	--

**SAR by 20B Saturated Paste**

SAR	0.0736		0.0100	SAR	1	B4E2216	05/22/2024	05/23/2024	
-----	--------	--	--------	-----	---	---------	------------	------------	--

**Specific Conductance Mod. 9050A**

Specific Conductance (EC)	0.208		0.00500	mmhos/cm	1	B4E2227	05/22/2024	05/23/2024	
---------------------------	-------	--	---------	----------	---	---------	------------	------------	--

**Table 915 metals by EPA 6020B**

Origins Laboratory, Inc.



The results in this report apply to the samples analyzed in accordance with the chain of custody document. This analytical report must be reproduced in its entirety.

Eagle Environmental Consulting, LLC  
 8000 W 44th Ave  
 Wheat Ridge CO 80033

Andrew Newberry  
 Project Number: [none]  
 Project: Noble - Storer A #12-2

**FL02R-S@4'**

**5/20/2024 11:48:00AM**

Analyte	Result	Min Detection Limit	Reporting Limit	Units	Dilution	Batch	Prepared	Analyzed	Notes
---------	--------	---------------------	-----------------	-------	----------	-------	----------	----------	-------

**Origins Laboratory, Inc.**  
**Y405606-02 (Soil)**

**Table 915 metals by EPA 6020B**

Arsenic	4.04		0.249	mg/kg	10	B4E2044	05/21/2024	05/22/2024	
Barium	57.5		8.59	"	"	"	"	"	
Cadmium	0.155		0.0859	"	"	"	"	"	
Copper	ND		8.59	"	"	"	"	"	
Lead	5.21		0.859	"	"	"	"	"	
Nickel	5.27		0.859	"	"	"	"	"	
Selenium	ND		0.223	"	"	"	"	"	
Silver	ND		0.0859	"	"	"	"	"	
Zinc	ND		31.8	"	"	"	"	"	

**Total Metals by 7196A**

Hexavalent Chromium	ND	0.152	0.381	mg/kg dry	1	2618088	05/29/2024	05/29/2024	U
---------------------	----	-------	-------	-----------	---	---------	------------	------------	---

Origins Laboratory, Inc.



*The results in this report apply to the samples analyzed in accordance with the chain of custody document. This analytical report must be reproduced in its entirety.*

Eagle Environmental Consulting, LLC  
 8000 W 44th Ave  
 Wheat Ridge CO 80033

Andrew Newberry  
 Project Number: [none]  
 Project: Noble - Storer A #12-2

**Background-01@2'**  
**5/20/2024 10:49:00AM**

Analyte	Result	Min Detection Limit	Reporting Limit	Units	Dilution	Batch	Prepared	Analyzed	Notes
---------	--------	---------------------	-----------------	-------	----------	-------	----------	----------	-------

**Origins Laboratory, Inc.**  
**Y405606-03 (Soil)**

**Boron (DTPA Sorbitol)**

Boron	0.925		0.101	mg/L	1	B4E2109	05/21/2024	05/22/2024	
-------	-------	--	-------	------	---	---------	------------	------------	--

**Metals by Saturated Paste by EPA 6010**

Calcium	1.71		0.499	meq/L	10	[CALC]	05/22/2024	05/23/2024	
Magnesium	1.28		0.823	"	"	"	"	"	
Sodium	0.970		0.435	"	"	"	"	"	

**pH in Soil by 9045D**

pH	8.47			pH Units	1	B4E2227	05/22/2024	05/23/2024	
----	------	--	--	----------	---	---------	------------	------------	--

**SAR by 20B Saturated Paste**

SAR	0.793		0.0100	SAR	1	B4E2216	05/22/2024	05/23/2024	
-----	-------	--	--------	-----	---	---------	------------	------------	--

**Specific Conductance Mod. 9050A**

Specific Conductance (EC)	0.683		0.00500	mmhos/cm	1	B4E2227	05/22/2024	05/23/2024	
---------------------------	-------	--	---------	----------	---	---------	------------	------------	--

**Table 915 metals by EPA 6020B**

Arsenic	2.58		0.281	mg/kg	10	B4E2044	05/21/2024	05/22/2024	
Barium	40.3		9.69	"	"	"	"	"	
Cadmium	0.112		0.0969	"	"	"	"	"	
Copper	ND		9.69	"	"	"	"	"	

Origins Laboratory, Inc.



*The results in this report apply to the samples analyzed in accordance with the chain of custody document. This analytical report must be reproduced in its entirety.*

Eagle Environmental Consulting, LLC  
 8000 W 44th Ave  
 Wheat Ridge CO 80033

Andrew Newberry  
 Project Number: [none]  
 Project: Noble - Storer A #12-2

**Background-01@2'**  
**5/20/2024 10:49:00AM**

Analyte	Result	Min Detection Limit	Reporting Limit	Units	Dilution	Batch	Prepared	Analyzed	Notes
---------	--------	---------------------	-----------------	-------	----------	-------	----------	----------	-------

**Origins Laboratory, Inc.**  
**Y405606-03 (Soil)**

**Table 915 metals by EPA 6020B**

Lead	4.73		0.969	mg/kg	10	B4E2044	05/21/2024	05/22/2024	
Nickel	3.61		0.969	"	"	"	"	"	
Selenium	ND		0.252	"	"	"	"	"	
Silver	ND		0.0969	"	"	"	"	"	
Zinc	ND		35.8	"	"	"	"	"	

**Total Metals by 7196A**

Hexavalent Chromium	ND	0.138	0.345	mg/kg dry	1	2618088	05/29/2024	05/29/2024	U
---------------------	----	-------	-------	-----------	---	---------	------------	------------	---

Origins Laboratory, Inc.



*The results in this report apply to the samples analyzed in accordance with the chain of custody document. This analytical report must be reproduced in its entirety.*

Eagle Environmental Consulting, LLC  
 8000 W 44th Ave  
 Wheat Ridge CO 80033

Andrew Newberry  
 Project Number: [none]  
 Project: Noble - Storer A #12-2

**Background-02@2'**  
**5/20/2024 11:54:00AM**

Analyte	Result	Min Detection Limit	Reporting Limit	Units	Dilution	Batch	Prepared	Analyzed	Notes
---------	--------	---------------------	-----------------	-------	----------	-------	----------	----------	-------

**Origins Laboratory, Inc.**  
**Y405606-04 (Soil)**

**Boron (DTPA Sorbitol)**

Boron	0.991		0.0991	mg/L	1	B4E2109	05/21/2024	05/22/2024	
-------	-------	--	--------	------	---	---------	------------	------------	--

**Metals by Saturated Paste by EPA 6010**

Calcium	2.41		0.499	meq/L	10	[CALC]	05/22/2024	05/23/2024	
Magnesium	1.74		0.823	"	"	"	"	"	
Sodium	1.44		0.435	"	"	"	"	"	

**pH in Soil by 9045D**

pH	8.38			pH Units	1	B4E2228	05/22/2024	05/23/2024	
----	------	--	--	----------	---	---------	------------	------------	--

**SAR by 20B Saturated Paste**

SAR	0.998		0.0100	SAR	1	B4E2217	05/22/2024	05/23/2024	
-----	-------	--	--------	-----	---	---------	------------	------------	--

**Specific Conductance Mod. 9050A**

Specific Conductance (EC)	0.853		0.00500	mmhos/cm	1	B4E2228	05/22/2024	05/23/2024	
---------------------------	-------	--	---------	----------	---	---------	------------	------------	--

**Table 915 metals by EPA 6020B**

Arsenic	2.46		0.278	mg/kg	10	B4E2044	05/21/2024	05/22/2024	
Barium	46.2		9.59	"	"	"	"	"	
Cadmium	0.119		0.0959	"	"	"	"	"	
Copper	12.0		9.59	"	"	"	"	"	

Origins Laboratory, Inc.



*The results in this report apply to the samples analyzed in accordance with the chain of custody document. This analytical report must be reproduced in its entirety.*

Eagle Environmental Consulting, LLC  
 8000 W 44th Ave  
 Wheat Ridge CO 80033

Andrew Newberry  
 Project Number: [none]  
 Project: Noble - Storer A #12-2

**Background-02@2'**  
**5/20/2024 11:54:00AM**

Analyte	Result	Min Detection Limit	Reporting Limit	Units	Dilution	Batch	Prepared	Analyzed	Notes
---------	--------	---------------------	-----------------	-------	----------	-------	----------	----------	-------

**Origins Laboratory, Inc.**  
**Y405606-04 (Soil)**

**Table 915 metals by EPA 6020B**

Lead	4.65		0.959	mg/kg	10	B4E2044	05/21/2024	05/22/2024	
Nickel	3.79		0.959	"	"	"	"	"	
Selenium	ND		0.249	"	"	"	"	"	
Silver	ND		0.0959	"	"	"	"	"	
Zinc	ND		35.5	"	"	"	"	"	

**Total Metals by 7196A**

Hexavalent Chromium	ND	0.148	0.369	mg/kg dry	1	2618088	05/29/2024	05/29/2024	U
---------------------	----	-------	-------	-----------	---	---------	------------	------------	---

Origins Laboratory, Inc.



*The results in this report apply to the samples analyzed in accordance with the chain of custody document. This analytical report must be reproduced in its entirety.*

Eagle Environmental Consulting, LLC  
 8000 W 44th Ave  
 Wheat Ridge CO 80033

Andrew Newberry  
 Project Number: [none]  
 Project: Noble - Storer A #12-2

**Volatile Organic Compounds by GC/MS SW846 8260D - Quality Control**  
**Origins Laboratory, Inc.**

Analyte	Result	Reporting Limit	Units	Spike Level	Source Result	%REC	%REC Limits	RPD	RPD Limit	Notes
---------	--------	-----------------	-------	-------------	---------------	------	-------------	-----	-----------	-------

**Batch B4E2103 - EPA 5030 (soil)**

**Blank (B4E2103-BLK1)**

Prepared: 05/21/2024 Analyzed: 05/21/2024

1,2,4-Trimethylbenzene	ND	0.00200	mg/kg							Ua
1,3,5-Trimethylbenzene	ND	0.00200	"							Ua
Benzene	ND	0.00200	"							Ua
Ethylbenzene	ND	0.00200	"							Ua
Naphthalene	ND	0.00380	"							Ua
Toluene	ND	0.00200	"							Ua
Xylenes, total	ND	0.00200	"							Ua
Gasoline Range Hydrocarbons	ND	0.200	"							Ua
Surrogate: 1,2-Dichloroethane-d4	0.12		"	0.125		96.6	70-130			
Surrogate: Toluene-d8	0.12		"	0.125		99.0	70-130			
Surrogate: 4-Bromofluorobenzene	0.13		"	0.125		108	70-130			

Origins Laboratory, Inc.



*The results in this report apply to the samples analyzed in accordance with the chain of custody document. This analytical report must be reproduced in its entirety.*

Eagle Environmental Consulting, LLC  
 8000 W 44th Ave  
 Wheat Ridge CO 80033

Andrew Newberry  
 Project Number: [none]  
 Project: Noble - Storer A #12-2

**Volatile Organic Compounds by GC/MS SW846 8260D - Quality Control**  
**Origins Laboratory, Inc.**

Analyte	Result	Reporting Limit	Units	Spike Level	Source Result	%REC	%REC Limits	RPD	RPD Limit	Notes
---------	--------	-----------------	-------	-------------	---------------	------	-------------	-----	-----------	-------

**Batch B4E2103 - EPA 5030 (soil)**

**LCS (B4E2103-BS1)**

Prepared: 05/21/2024 Analyzed: 05/21/2024

1,2,4-Trimethylbenzene	0.0971	0.00200	mg/kg	0.100		97.1	70-130			
1,3,5-Trimethylbenzene	0.0993	0.00200	"	0.100		99.3	70-130			
Benzene	0.0969	0.00200	"	0.100		96.9	70-130			
Ethylbenzene	0.0935	0.00200	"	0.100		93.5	70-130			
Naphthalene	0.111	0.00380	"	0.100		111	70-130			
Toluene	0.0944	0.00200	"	0.100		94.4	70-130			
o-Xylene	0.0927	0.00200	"	0.100		92.7	70-130			
m,p-Xylene	0.189	0.00400	"	0.200		94.5	70-130			
Surrogate: 1,2-Dichloroethane-d4	0.12		"	0.125		95.7	70-130			
Surrogate: Toluene-d8	0.12		"	0.125		97.8	70-130			
Surrogate: 4-Bromofluorobenzene	0.12		"	0.125		99.1	70-130			

Origins Laboratory, Inc.



*The results in this report apply to the samples analyzed in accordance with the chain of custody document. This analytical report must be reproduced in its entirety.*

Eagle Environmental Consulting, LLC  
 8000 W 44th Ave  
 Wheat Ridge CO 80033

Andrew Newberry  
 Project Number: [none]  
 Project: Noble - Storer A #12-2

**Volatile Organic Compounds by GC/MS SW846 8260D - Quality Control**  
**Origins Laboratory, Inc.**

Analyte	Result	Reporting Limit	Units	Spike Level	Source Result	%REC	%REC Limits	RPD	RPD Limit	Notes
---------	--------	-----------------	-------	-------------	---------------	------	-------------	-----	-----------	-------

Batch B4E2103 - EPA 5030 (soil)

Matrix Spike (B4E2103-MS1)	Source: Y405584-01			Prepared: 05/21/2024 Analyzed: 05/21/2024						
1,2,4-Trimethylbenzene	0.0706	0.00200	mg/kg	0.100	ND	70.6	70-130			
1,3,5-Trimethylbenzene	0.0717	0.00200	"	0.100	ND	71.7	70-130			
Benzene	0.0803	0.00200	"	0.100	ND	80.3	70-130			
Ethylbenzene	0.0748	0.00200	"	0.100	ND	74.8	70-130			
Naphthalene	0.0732	0.00380	"	0.100	ND	73.2	70-130			
Toluene	0.0749	0.00200	"	0.100	ND	74.9	70-130			
o-Xylene	0.0760	0.00200	"	0.100	ND	76.0	70-130			
m,p-Xylene	0.151	0.00400	"	0.200	ND	75.5	70-130			
Surrogate: 1,2-Dichloroethane-d4	0.13		"	0.125		102	70-130			
Surrogate: Toluene-d8	0.12		"	0.125		98.7	70-130			
Surrogate: 4-Bromofluorobenzene	0.13		"	0.125		102	70-130			

Origins Laboratory, Inc.



The results in this report apply to the samples analyzed in accordance with the chain of custody document. This analytical report must be reproduced in its entirety.

Eagle Environmental Consulting, LLC  
 8000 W 44th Ave  
 Wheat Ridge CO 80033

Andrew Newberry  
 Project Number: [none]  
 Project: Noble - Storer A #12-2

**Volatile Organic Compounds by GC/MS SW846 8260D - Quality Control**  
**Origins Laboratory, Inc.**

Analyte	Result	Reporting Limit	Units	Spike Level	Source Result	%REC	%REC Limits	RPD	RPD Limit	Notes
---------	--------	-----------------	-------	-------------	---------------	------	-------------	-----	-----------	-------

Batch B4E2103 - EPA 5030 (soil)

Matrix Spike Dup (B4E2103-MSD1)	Source: Y405584-01			Prepared: 05/21/2024 Analyzed: 05/23/2024						
1,2,4-Trimethylbenzene	0.0525	0.00200	mg/kg	0.100	ND	52.5	70-130	29.4	20	QM-07
1,3,5-Trimethylbenzene	0.0580	0.00200	"	0.100	ND	58.0	70-130	21.2	20	QM-07
Benzene	0.0774	0.00200	"	0.100	ND	77.4	70-130	3.73	20	
Ethylbenzene	0.0644	0.00200	"	0.100	ND	64.4	70-130	14.9	20	QM-07
Naphthalene	0.0691	0.00380	"	0.100	ND	69.1	70-130	5.74	20	QM-07
Toluene	0.0733	0.00200	"	0.100	ND	73.3	70-130	2.13	20	
o-Xylene	0.0672	0.00200	"	0.100	ND	67.2	70-130	12.3	20	QM-07
m,p-Xylene	0.126	0.00400	"	0.200	ND	63.0	70-130	18.1	20	QM-07
Surrogate: 1,2-Dichloroethane-d4	0.13		"	0.125		104	70-130			
Surrogate: Toluene-d8	0.13		"	0.125		106	70-130			
Surrogate: 4-Bromofluorobenzene	0.13		"	0.125		102	70-130			

Origins Laboratory, Inc.



The results in this report apply to the samples analyzed in accordance with the chain of custody document. This analytical report must be reproduced in its entirety.

Eagle Environmental Consulting, LLC  
 8000 W 44th Ave  
 Wheat Ridge CO 80033

Andrew Newberry  
 Project Number: [none]  
 Project: Noble - Storer A #12-2

**Volatile Organic Compounds by GC/MS SW846 8260D - Quality Control**  
**Origins Laboratory, Inc.**

Analyte	Result	Reporting Limit	Units	Spike Level	Source Result	%REC	%REC Limits	RPD	RPD Limit	Notes
<b>Batch B4E2201 - EPA 3550B</b>										
<b>Blank (B4E2201-BLK1)</b>										
					Prepared: 05/22/2024 Analyzed: 05/24/2024					
Diesel (C10-C28)	ND	25.0	mg/kg							Ua
Residual Range Organics (C28-C40)	ND	100	"							Ua
Surrogate: o-Terphenyl	23		"	24.9		91.2	50-150			

Origins Laboratory, Inc.



*The results in this report apply to the samples analyzed in accordance with the chain of custody document. This analytical report must be reproduced in its entirety.*

Eagle Environmental Consulting, LLC  
 8000 W 44th Ave  
 Wheat Ridge CO 80033

Andrew Newberry  
 Project Number: [none]  
 Project: Noble - Storer A #12-2

**Extractable Petroleum Hydrocarbons by 8015D - Quality Control**  
**Origins Laboratory, Inc.**

Analyte	Result	Reporting Limit	Units	Spike Level	Source Result	%REC	%REC Limits	RPD	RPD Limit	Notes
---------	--------	-----------------	-------	-------------	---------------	------	-------------	-----	-----------	-------

**Batch B4E2201 - EPA 3550B**

**LCS (B4E2201-BS1)**

Prepared: 05/22/2024 Analyzed: 05/24/2024

Diesel (C10-C28)	858	50.0	mg/kg	1000		85.8	70-130			
Residual Range Organics (C28-C40)	930	200	"	1000		93.0	70-130			
Surrogate: o-Terphenyl	53		"	49.8		106	50-150			

Origins Laboratory, Inc.



*The results in this report apply to the samples analyzed in accordance with the chain of custody document. This analytical report must be reproduced in its entirety.*

Eagle Environmental Consulting, LLC  
 8000 W 44th Ave  
 Wheat Ridge CO 80033

Andrew Newberry  
 Project Number: [none]  
 Project: Noble - Storer A #12-2

**Extractable Petroleum Hydrocarbons by 8015D - Quality Control**  
**Origins Laboratory, Inc.**

Analyte	Result	Reporting Limit	Units	Spike Level	Source Result	%REC	%REC Limits	RPD	RPD Limit	Notes
---------	--------	-----------------	-------	-------------	---------------	------	-------------	-----	-----------	-------

**Batch B4E2201 - EPA 3550B**

<b>Matrix Spike (B4E2201-MS1)</b>	<b>Source: Y405583-01</b>			Prepared: 05/22/2024 Analyzed: 05/24/2024						
Diesel (C10-C28)	925	50.0	mg/kg	1000	ND	92.5	70-130			
Residual Range Organics (C28-C40)	1010	200	"	1000	ND	101	70-130			
Surrogate: o-Terphenyl	53		"	49.8		107	50-150			

Origins Laboratory, Inc.



*The results in this report apply to the samples analyzed in accordance with the chain of custody document. This analytical report must be reproduced in its entirety.*

Eagle Environmental Consulting, LLC  
 8000 W 44th Ave  
 Wheat Ridge CO 80033

Andrew Newberry  
 Project Number: [none]  
 Project: Noble - Storer A #12-2

**Extractable Petroleum Hydrocarbons by 8015D - Quality Control**  
**Origins Laboratory, Inc.**

Analyte	Result	Reporting Limit	Units	Spike Level	Source Result	%REC	%REC Limits	RPD	RPD Limit	Notes
<b>Batch B4E2201 - EPA 3550B</b>										
<b>Matrix Spike Dup (B4E2201-MSD1)</b>		<b>Source: Y405583-01</b>			Prepared: 05/22/2024 Analyzed: 05/24/2024					
Diesel (C10-C28)	890	50.0	mg/kg	1000	ND	89.0	70-130	3.87	35	
Residual Range Organics (C28-C40)	972	200	"	1000	ND	97.2	70-130	3.39	35	
Surrogate: o-Terphenyl	50		"	49.8		101	50-150			

Origins Laboratory, Inc.



*The results in this report apply to the samples analyzed in accordance with the chain of custody document. This analytical report must be reproduced in its entirety.*

Eagle Environmental Consulting, LLC  
 8000 W 44th Ave  
 Wheat Ridge CO 80033

Andrew Newberry  
 Project Number: [none]  
 Project: Noble - Storer A #12-2

**Extractable Petroleum Hydrocarbons by 8015D - Quality Control**  
**Origins Laboratory, Inc.**

Analyte	Result	Reporting Limit	Units	Spike Level	Source Result	%REC	%REC Limits	RPD	RPD Limit	Notes
---------	--------	-----------------	-------	-------------	---------------	------	-------------	-----	-----------	-------

**Metals by EPA 6000/7000 Series Methods - Quality Control**  
**Origins Laboratory, Inc.**

Analyte	Result	Reporting Limit	Units	Spike Level	Source Result	%REC	%REC Limits	RPD	RPD Limit	Notes
---------	--------	-----------------	-------	-------------	---------------	------	-------------	-----	-----------	-------

**Batch B4E2044 - EPA 3050B**

**Blank (B4E2044-BLK1)**

Prepared: 05/21/2024 Analyzed: 05/23/2024

Arsenic	ND	0.290	mg/kg							
Barium	ND	10.0	"							
Cadmium	ND	0.100	"							
Copper	ND	10.0	"							
Lead	ND	1.00	"							
Nickel	ND	1.00	"							
Selenium	ND	0.260	"							
Silver	ND	0.100	"							
Zinc	ND	37.0	"							

**LCS (B4E2044-BS1)**

Prepared: 05/21/2024 Analyzed: 05/23/2024

Arsenic	5.13	0.290	mg/kg	5.00		103	80-120			
Barium	545	10.0	"	500		109	80-120			
Cadmium	5.50	0.100	"	5.00		110	80-120			
Copper	52.5	10.0	"	50.0		105	80-120			
Lead	5.27	1.00	"	5.00		105	80-120			
Nickel	5.26	1.00	"	5.00		105	80-120			
Selenium	9.90	0.260	"	9.50		104	80-120			
Silver	5.11	0.100	"	5.00		102	80-120			
Zinc	52.6	37.0	"	50.0		105	80-120			

**Matrix Spike (B4E2044-MS1)**

Source: Y405604-01

Prepared: 05/21/2024 Analyzed: 05/23/2024

Origins Laboratory, Inc.



*The results in this report apply to the samples analyzed in accordance with the chain of custody document. This analytical report must be reproduced in its entirety.*

Eagle Environmental Consulting, LLC  
 8000 W 44th Ave  
 Wheat Ridge CO 80033

Andrew Newberry  
 Project Number: [none]  
 Project: Noble - Storer A #12-2

**Metals by EPA 6000/7000 Series Methods - Quality Control**  
**Origins Laboratory, Inc.**

Analyte	Result	Reporting Limit	Units	Spike Level	Source Result	%REC	%REC Limits	RPD	RPD Limit	Notes
---------	--------	-----------------	-------	-------------	---------------	------	-------------	-----	-----------	-------

**Batch B4E2044 - EPA 3050B**

<b>Matrix Spike (B4E2044-MS1)</b>		<b>Source: Y405604-01</b>			Prepared: 05/21/2024 Analyzed: 05/23/2024					
Arsenic	8.43	0.278	mg/kg	4.79	3.29	107	75-125			
Barium	605	9.59	"	479	64.0	113	75-125			
Cadmium	5.54	0.0959	"	4.79	0.348	108	75-125			
Copper	60.2	9.59	"	47.9	11.9	101	75-125			
Lead	21.7	0.959	"	4.79	19.4	49.5	75-125			QM-07
Nickel	11.4	0.959	"	4.79	5.83	117	75-125			
Selenium	8.91	0.249	"	9.11	0.205	95.6	75-125			
Silver	4.76	0.0959	"	4.79	0.142	96.3	75-125			
Zinc	112	35.5	"	47.9	52.9	123	75-125			

<b>Matrix Spike Dup (B4E2044-MSD1)</b>		<b>Source: Y405604-01</b>			Prepared: 05/21/2024 Analyzed: 05/23/2024					
Arsenic	7.38	0.279	mg/kg	4.81	3.29	85.1	75-125	13.3	20	
Barium	591	9.61	"	481	64.0	110	75-125	2.22	20	
Cadmium	5.41	0.0961	"	4.81	0.348	105	75-125	2.40	20	
Copper	59.4	9.61	"	48.1	11.9	98.7	75-125	1.32	20	
Lead	21.4	0.961	"	4.81	19.4	42.4	75-125	1.56	20	QM-07
Nickel	9.97	0.961	"	4.81	5.83	86.1	75-125	13.6	20	
Selenium	9.13	0.250	"	9.13	0.205	97.7	75-125	2.36	20	
Silver	5.05	0.0961	"	4.81	0.142	102	75-125	5.89	20	
Zinc	97.9	35.6	"	48.1	52.9	93.7	75-125	13.3	20	

Origins Laboratory, Inc.



*The results in this report apply to the samples analyzed in accordance with the chain of custody document. This analytical report must be reproduced in its entirety.*

Eagle Environmental Consulting, LLC  
 8000 W 44th Ave  
 Wheat Ridge CO 80033

Andrew Newberry  
 Project Number: [none]  
 Project: Noble - Storer A #12-2

**EPA 8270E (SW846) - Semivolatile Organic Compounds - Quality Control**  
**Origins Laboratory, Inc.**

Analyte	Result	Reporting Limit	Units	Spike Level	Source Result	%REC	%REC Limits	RPD	RPD Limit	Notes
---------	--------	-----------------	-------	-------------	---------------	------	-------------	-----	-----------	-------

**Batch B4E2133 - EPA 3580**

**Blank (B4E2133-BLK1)**

Prepared: 05/21/2024 Analyzed: 05/24/2024

1-Methylnaphthalene	ND	0.002	mg/kg							Ua
2-Methylnaphthalene	ND	0.002	"							Ua
Acenaphthene	ND	0.020	"							Ua
Anthracene	ND	0.020	"							Ua
Benzo (a) anthracene	ND	0.005	"							Ua
Benzo (a) pyrene	ND	0.020	"							Ua
Benzo (b) fluoranthene	ND	0.020	"							Ua
Benzo (g,h,i) perylene	ND	0.020	"							Ua
Benzo (k) fluoranthene	ND	0.020	"							Ua
Chrysene	ND	0.020	"							Ua
Dibenz (a,h) anthracene	ND	0.020	"							Ua
Fluoranthene	ND	0.020	"							Ua
Fluorene	ND	0.020	"							Ua
Indeno (1,2,3-cd) pyrene	ND	0.020	"							Ua
Naphthalene	ND	0.002	"							Ua
Phenanthrene	ND	0.020	"							Ua
Pyrene	ND	0.020	"							Ua
Surrogate: Fluorene-d10	200		ug/kg	200		102	60-130			
Surrogate: Anthracene-d10	200		"	200		102	60-130			
Surrogate: Pyrene-d10	210		"	200		106	60-130			
Surrogate: Benzo (a) pyrene-d12	200		"	200		98.0	60-130			

**LCS (B4E2133-BS1)**

Prepared: 05/21/2024 Analyzed: 05/24/2024

1-Methylnaphthalene	0.205	0.002	mg/kg	0.200		102	70-130			
2-Methylnaphthalene	0.202	0.002	"	0.200		101	70-130			
Acenaphthene	0.204	0.020	"	0.200		102	70-130			
Anthracene	0.218	0.020	"	0.200		109	70-130			

Origins Laboratory, Inc.



The results in this report apply to the samples analyzed in accordance with the chain of custody document. This analytical report must be reproduced in its entirety.

Eagle Environmental Consulting, LLC  
 8000 W 44th Ave  
 Wheat Ridge CO 80033

Andrew Newberry  
 Project Number: [none]  
 Project: Noble - Storer A #12-2

**EPA 8270E (SW846) - Semivolatile Organic Compounds - Quality Control**  
**Origins Laboratory, Inc.**

Analyte	Result	Reporting Limit	Units	Spike Level	Source Result	%REC	%REC Limits	RPD	RPD Limit	Notes
---------	--------	-----------------	-------	-------------	---------------	------	-------------	-----	-----------	-------

**Batch B4E2133 - EPA 3580**

**LCS (B4E2133-BS1)**

Prepared: 05/21/2024 Analyzed: 05/24/2024

Benzo (a) anthracene	0.213	0.005	mg/kg	0.200		106	70-130			
Benzo (a) pyrene	0.205	0.020	"	0.200		102	70-130			
Benzo (b) fluoranthene	0.186	0.020	"	0.200		92.9	70-130			
Benzo (g,h,i) perylene	0.188	0.020	"	0.200		94.0	70-130			
Benzo (k) fluoranthene	0.168	0.020	"	0.200		83.9	70-130			
Chrysene	0.209	0.020	"	0.200		104	70-130			
Dibenz (a,h) anthracene	0.208	0.020	"	0.200		104	70-130			
Fluoranthene	0.206	0.020	"	0.200		103	70-130			
Fluorene	0.212	0.020	"	0.200		106	70-130			
Indeno (1,2,3-cd) pyrene	0.207	0.020	"	0.200		103	70-130			
Naphthalene	0.205	0.002	"	0.200		102	70-130			
Phenanthrene	0.193	0.020	"	0.200		96.6	70-130			
Pyrene	0.216	0.020	"	0.200		108	70-130			

Surrogate: Fluorene-d10	210		ug/kg	200		107	60-130			
Surrogate: Anthracene-d10	200		"	200		100	60-130			
Surrogate: Pyrene-d10	210		"	200		104	60-130			
Surrogate: Benzo (a) pyrene-d12	200		"	200		99.6	60-130			

**Matrix Spike (B4E2133-MS1)**

**Source: Y405604-02**

Prepared: 05/21/2024 Analyzed: 05/24/2024

1-Methylnaphthalene	0.195	0.002	mg/kg	0.200	ND	97.3	70-130			
2-Methylnaphthalene	0.194	0.002	"	0.200	ND	97.1	70-130			
Acenaphthene	0.192	0.020	"	0.200	0.001	95.7	70-130			
Anthracene	0.189	0.020	"	0.200	ND	94.7	70-130			
Benzo (a) anthracene	0.189	0.005	"	0.200	0.0007	94.2	70-130			
Benzo (a) pyrene	0.213	0.020	"	0.200	0.002	105	70-130			
Benzo (b) fluoranthene	0.190	0.020	"	0.200	0.0005	94.5	70-130			
Benzo (g,h,i) perylene	0.203	0.020	"	0.200	0.002	100	70-130			

Origins Laboratory, Inc.



The results in this report apply to the samples analyzed in accordance with the chain of custody document. This analytical report must be reproduced in its entirety.

Eagle Environmental Consulting, LLC  
 8000 W 44th Ave  
 Wheat Ridge CO 80033

Andrew Newberry  
 Project Number: [none]  
 Project: Noble - Storer A #12-2

**EPA 8270E (SW846) - Semivolatile Organic Compounds - Quality Control**  
**Origins Laboratory, Inc.**

Analyte	Result	Reporting Limit	Units	Spike Level	Source Result	%REC	%REC Limits	RPD	RPD Limit	Notes
---------	--------	-----------------	-------	-------------	---------------	------	-------------	-----	-----------	-------

**Batch B4E2133 - EPA 3580**

<b>Matrix Spike (B4E2133-MS1)</b>		<b>Source: Y405604-02</b>			Prepared: 05/21/2024 Analyzed: 05/24/2024					
Benzo (k) fluoranthene	0.178	0.020	mg/kg	0.200	0.0007	88.4	70-130			
Chrysene	0.197	0.020	"	0.200	0.002	97.7	70-130			
Dibenz (a,h) anthracene	0.208	0.020	"	0.200	ND	104	70-130			
Fluoranthene	0.185	0.020	"	0.200	0.0004	92.0	70-130			
Fluorene	0.182	0.020	"	0.200	0.0009	90.8	70-130			
Indeno (1,2,3-cd) pyrene	0.222	0.020	"	0.200	ND	111	70-130			
Naphthalene	0.202	0.002	"	0.200	ND	101	70-130			
Phenanthrene	0.185	0.020	"	0.200	ND	92.6	70-130			
Pyrene	0.196	0.020	"	0.200	ND	98.0	70-130			
Surrogate: Fluorene-d10	180		ug/kg	200		92.4	60-130			
Surrogate: Anthracene-d10	180		"	200		92.4	60-130			
Surrogate: Pyrene-d10	190		"	200		95.4	60-130			
Surrogate: Benzo (a) pyrene-d12	210		"	200		103	60-130			

<b>Matrix Spike Dup (B4E2133-MSD1)</b>		<b>Source: Y405604-02</b>			Prepared: 05/21/2024 Analyzed: 05/24/2024					
1-Methylnaphthalene	0.197	0.002	mg/kg	0.200	ND	98.5	70-130	1.23	20	
2-Methylnaphthalene	0.202	0.002	"	0.200	ND	101	70-130	3.87	20	
Acenaphthene	0.195	0.020	"	0.200	0.001	96.8	70-130	1.15	20	
Anthracene	0.201	0.020	"	0.200	ND	101	70-130	6.08	20	
Benzo (a) anthracene	0.232	0.005	"	0.200	0.0007	116	70-130	20.4	20	QR-02
Benzo (a) pyrene	0.215	0.020	"	0.200	0.002	106	70-130	0.761	20	
Benzo (b) fluoranthene	0.213	0.020	"	0.200	0.0005	106	70-130	11.8	20	
Benzo (g,h,i) perylene	0.207	0.020	"	0.200	0.002	103	70-130	2.41	20	
Benzo (k) fluoranthene	0.175	0.020	"	0.200	0.0007	87.2	70-130	1.34	20	
Chrysene	0.214	0.020	"	0.200	0.002	106	70-130	8.28	20	
Dibenz (a,h) anthracene	0.211	0.020	"	0.200	ND	105	70-130	1.27	20	
Fluoranthene	0.212	0.020	"	0.200	0.0004	106	70-130	14.0	20	

Origins Laboratory, Inc.



The results in this report apply to the samples analyzed in accordance with the chain of custody document. This analytical report must be reproduced in its entirety.

Eagle Environmental Consulting, LLC  
 8000 W 44th Ave  
 Wheat Ridge CO 80033

Andrew Newberry  
 Project Number: [none]  
 Project: Noble - Storer A #12-2

**EPA 8270E (SW846) - Semivolatile Organic Compounds - Quality Control**  
**Origins Laboratory, Inc.**

Analyte	Result	Reporting Limit	Units	Spike Level	Source Result	%REC	%REC Limits	RPD	RPD Limit	Notes
---------	--------	-----------------	-------	-------------	---------------	------	-------------	-----	-----------	-------

Batch B4E2133 - EPA 3580

Matrix Spike Dup (B4E2133-MSD1)	Source: Y405604-02			Prepared: 05/21/2024 Analyzed: 05/24/2024						
Fluorene	0.204	0.020	mg/kg	0.200	0.0009	102	70-130	11.3	20	
Indeno (1,2,3-cd) pyrene	0.207	0.020	"	0.200	ND	103	70-130	7.09	20	
Naphthalene	0.204	0.002	"	0.200	ND	102	70-130	0.854	20	
Phenanthrene	0.194	0.020	"	0.200	ND	97.1	70-130	4.76	20	
Pyrene	0.236	0.020	"	0.200	ND	118	70-130	18.5	20	
Surrogate: Fluorene-d10	210		ug/kg	200		105	60-130			
Surrogate: Anthracene-d10	200		"	200		97.9	60-130			
Surrogate: Pyrene-d10	220		"	200		111	60-130			
Surrogate: Benzo (a) pyrene-d12	200		"	200		100	60-130			

Origins Laboratory, Inc.



*The results in this report apply to the samples analyzed in accordance with the chain of custody document. This analytical report must be reproduced in its entirety.*

Eagle Environmental Consulting, LLC  
 8000 W 44th Ave  
 Wheat Ridge CO 80033

Andrew Newberry  
 Project Number: [none]  
 Project: Noble - Storer A #12-2

**Classical Chemistry Parameters - Quality Control**  
**Origins Laboratory, Inc.**

Analyte	Result	Reporting Limit	Units	Spike Level	Source Result	%REC	%REC Limits	RPD	RPD Limit	Notes
---------	--------	-----------------	-------	-------------	---------------	------	-------------	-----	-----------	-------

**Batch B4E2109 - DTPA Sorbitol Preparation**

**Blank (B4E2109-BLK1)**

Prepared: 05/21/2024 Analyzed: 05/22/2024

Boron ND 0.100 mg/L

**Duplicate (B4E2109-DUP1)**

**Source: Y405584-01**

Prepared: 05/21/2024 Analyzed: 05/22/2024

Boron 0.349 0.102 mg/L 0.347 0.785 50

**Batch B4E2216 - Saturated Paste Metals**

**Blank (B4E2216-BLK1)**

Prepared: 05/22/2024 Analyzed: 05/23/2024

Calcium PPM ND 10.0 mg/L

SAR ND 0.0100 SAR

Magnesium PPM ND 10.0 mg/L

Sodium PPM ND 10.0 "

**Duplicate (B4E2216-DUP1)**

**Source: Y405584-01**

Prepared: 05/22/2024 Analyzed: 05/23/2024

SAR ND 0.0100 SAR 2.46 200

Calcium PPM 31.1 10.0 mg/L 33.5 7.59 50

Magnesium PPM 6.19 10.0 " 6.79 9.24 50

Sodium PPM 56.4 10.0 " 59.7 5.72 50

**Batch B4E2217 - Saturated Paste Metals**

**Blank (B4E2217-BLK1)**

Prepared: 05/22/2024 Analyzed: 05/23/2024

SAR ND 0.0100 SAR

Calcium PPM ND 10.0 mg/L

Magnesium PPM ND 10.0 "

Sodium PPM ND 10.0 "

Origins Laboratory, Inc.



*The results in this report apply to the samples analyzed in accordance with the chain of custody document. This analytical report must be reproduced in its entirety.*

Eagle Environmental Consulting, LLC  
 8000 W 44th Ave  
 Wheat Ridge CO 80033

Andrew Newberry  
 Project Number: [none]  
 Project: Noble - Storer A #12-2

**Classical Chemistry Parameters - Quality Control**  
**Origins Laboratory, Inc.**

Analyte	Result	Reporting Limit	Units	Spike Level	Source Result	%REC	%REC Limits	RPD	RPD Limit	Notes
---------	--------	-----------------	-------	-------------	---------------	------	-------------	-----	-----------	-------

**Batch B4E2217 - Saturated Paste Metals**

Duplicate (B4E2217-DUP1)	Source: Y405606-04			Prepared: 05/22/2024 Analyzed: 05/23/2024						
Calcium PPM	47.3	10.0	mg/L		48.4			2.13	50	
SAR	ND	0.0100	SAR		0.998				200	
Magnesium PPM	20.8	10.0	mg/L		21.1			1.33	50	
Sodium PPM	30.5	10.0	"		33.0			7.86	50	

Origins Laboratory, Inc.



*The results in this report apply to the samples analyzed in accordance with the chain of custody document. This analytical report must be reproduced in its entirety.*

Eagle Environmental Consulting, LLC  
 8000 W 44th Ave  
 Wheat Ridge CO 80033

Andrew Newberry  
 Project Number: [none]  
 Project: Noble - Storer A #12-2

**Saturated Paste - Quality Control**  
**Origins Laboratory, Inc.**

Analyte	Result	Reporting Limit	Units	Spike Level	Source Result	%REC	%REC Limits	RPD	RPD Limit	Notes
---------	--------	-----------------	-------	-------------	---------------	------	-------------	-----	-----------	-------

**Batch B4E2227 - Saturated Paste pH/EC**

**Blank (B4E2227-BLK1)**

Prepared: 05/22/2024 Analyzed: 05/23/2024

Specific Conductance (EC) ND 0.00500 mmhos/cm

**Duplicate (B4E2227-DUP1)**

**Source: Y405584-01**

Prepared: 05/22/2024 Analyzed: 05/23/2024

pH 8.35 pH Units 8.51 1.90 25

Specific Conductance (EC) 0.576 0.00500 mmhos/cm 0.584 1.21 25

**Batch B4E2228 - Saturated Paste pH/EC**

**Blank (B4E2228-BLK1)**

Prepared: 05/22/2024 Analyzed: 05/23/2024

Specific Conductance (EC) ND 0.00500 mmhos/cm

**Duplicate (B4E2228-DUP1)**

**Source: Y405606-04**

Prepared: 05/22/2024 Analyzed: 05/23/2024

Specific Conductance (EC) 0.895 0.00500 mmhos/cm 0.853 4.84 25

pH 8.46 pH Units 8.38 0.950 25

Origins Laboratory, Inc.



*The results in this report apply to the samples analyzed in accordance with the chain of custody document. This analytical report must be reproduced in its entirety.*

Eagle Environmental Consulting, LLC  
 8000 W 44th Ave  
 Wheat Ridge CO 80033

Andrew Newberry  
 Project Number: [none]  
 Project: Noble - Storer A #12-2

**Total Metals by 7196A - Quality Control**  
**GEL Laboratories, LLC**

Analyte	Result	Reporting Limit	Units	Spike Level	Source Result	%REC	%REC Limits	RPD	RPD Limit	Notes
<b>Batch 2618088 - SW846 3060A</b>										
<b>BLANK (1205746190-BLK)</b>					Prepared: 05/29/2024 Analyzed: 05/29/2024					
Hexavalent Chromium	ND	0.269	mg/kg				-			U
<b>LCS (1205746191-BKS)</b>					Prepared: 05/29/2024 Analyzed: 05/29/2024					
Hexavalent Chromium	2.74	0.280	mg/kg	2.80		97.7	80-120			
<b>DUP (1205746192 D)</b>					Source: 668734001 Prepared: 05/29/2024 Analyzed: 05/29/2024					
Hexavalent Chromium	ND	0.300	mg/kg dry		<0.120		0-50	N/A	50	U
<b>MS (1205746193 S)</b>					Source: 668734001 Prepared: 05/29/2024 Analyzed: 05/29/2024					
Hexavalent Chromium	1.40	0.300	mg/kg dry	3.00	<0.120	43.3	75-125			
<b>DUP (1205746194 D)</b>					Source: Y405606-02 Prepared: 05/29/2024 Analyzed: 05/29/2024					
Hexavalent Chromium	ND	0.381	mg/kg dry		<0.153		0-50	N/A	50	U
<b>MS (1205746195 S)</b>					Source: Y405606-02 Prepared: 05/29/2024 Analyzed: 05/29/2024					
Hexavalent Chromium	2.50	0.381	mg/kg dry	3.81	<0.153	63.2	75-125			
<b>ILCS (1205746196-ILCS)</b>					Prepared: 05/29/2024 Analyzed: 05/29/2024					
Hexavalent Chromium	5.96	0.278	mg/kg	5.78		103	80-120			

Origins Laboratory, Inc.



*The results in this report apply to the samples analyzed in accordance with the chain of custody document. This analytical report must be reproduced in its entirety.*

Eagle Environmental Consulting, LLC  
8000 W 44th Ave  
Wheat Ridge CO 80033

Andrew Newberry  
Project Number: [none]  
Project: Noble - Storer A #12-2

---

### Notes and Definitions

Ua Sample is Non-Detect.

U Result not detected above the detection limit

QR-02 The RPD result exceeded the QC control limits; however, both percent recoveries were acceptable. Sample results for the QC batch were accepted based on percent recoveries and completeness of QC data.

QM-07 The spike recovery was outside acceptance limits for the MS and/or MSD. The batch was accepted based on acceptable LCS recovery.

ND Analyte NOT DETECTED at or above the reporting limit

RPD Relative Percent Difference

All soil results are reported on a wet weight basis.

Calculated results may use J-flag data (instead of reported "ND") as part of calculation to provide a more accurate result.

Origins Laboratory, Inc.



*The results in this report apply to the samples analyzed in accordance with the chain of custody document. This analytical report must be reproduced in its entirety.*

---

Jordan A. Bynon, Project Manager