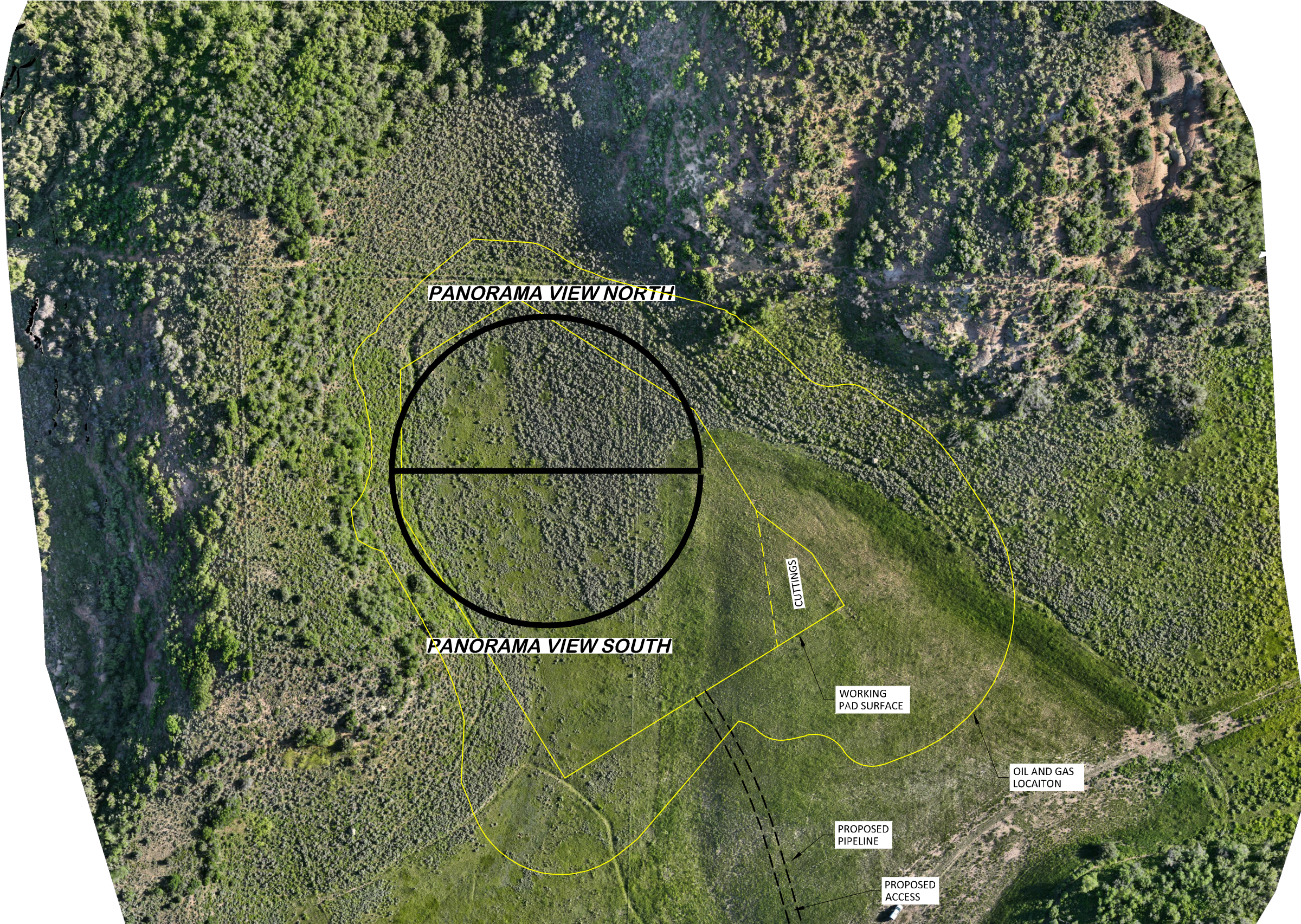
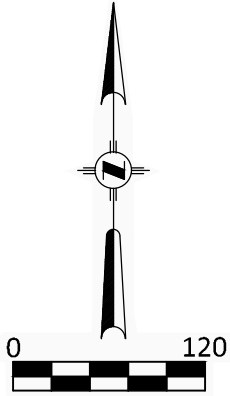



AERIAL LOCATION PHOTO



AERIAL PHOTO SOURCE
AERIAL UNMANNED AIRCRAFT PHOTOGRAMMETRY AT 150' ABOVE
GROUND LEVEL (AGL) TAKEN 6/26/2023

PAD LOCATION:
LAT: 39.254781 N
LONG: 107.784158 W

LARAMIE 0993-29-01

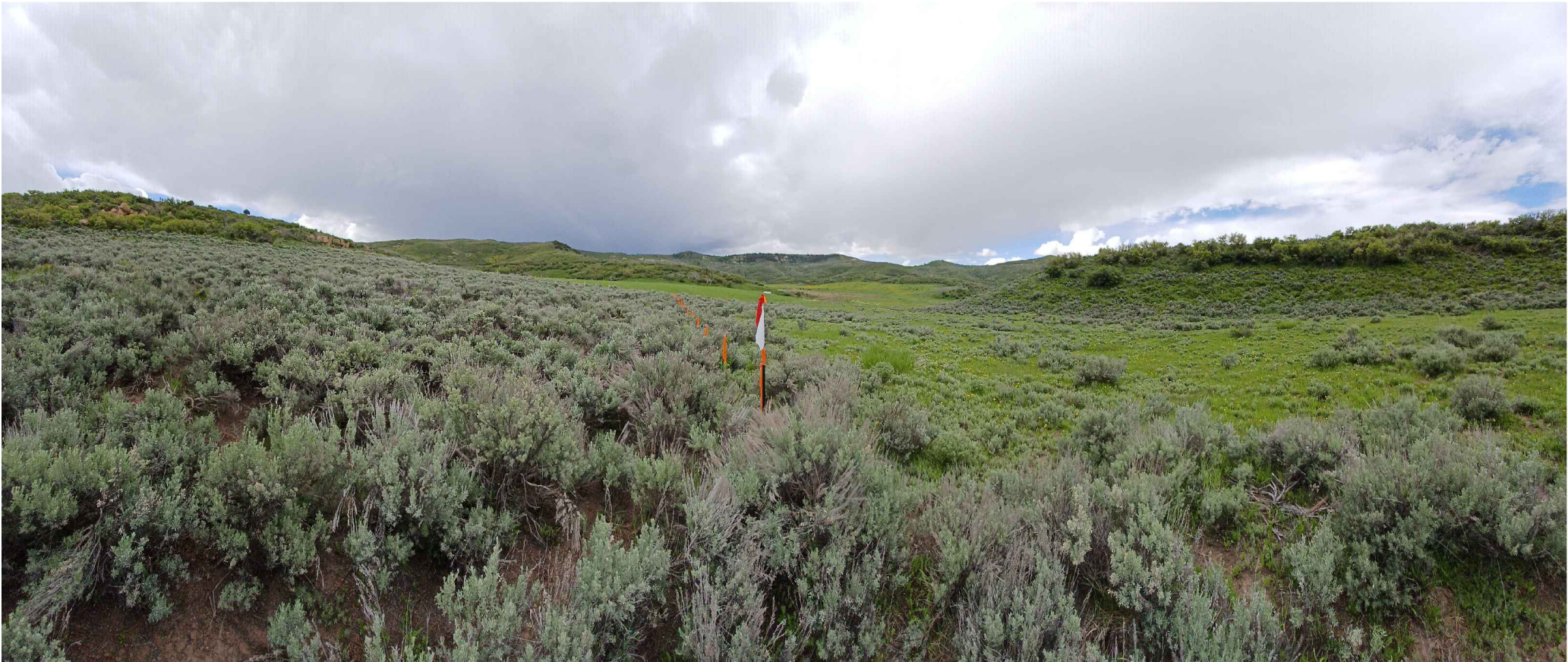
 <small>(307) 362-5028</small>			
1414 ELK ST., ROCK SPRINGS, WY 82901			
DRAWN: 8/10/2023 - DEH	SCALE: 1" = 120'		
REVISED: 9/11/2023 - DEH	DRG JOB No. 22334		
MISC. REVISIONS	304b(4) LOC PIC (1)		

LOCATION PICTURES 1 OF 4

LARAMIE ENERGY, LLC
LARAMIE 0993-29-01
NENE, SECTION 29, T.9 S., R. 93 W., 6th P.M.,
MESA COUNTY, COLORADO



W N E
LOCATION AREA PANORAMA LOOKING NORTH

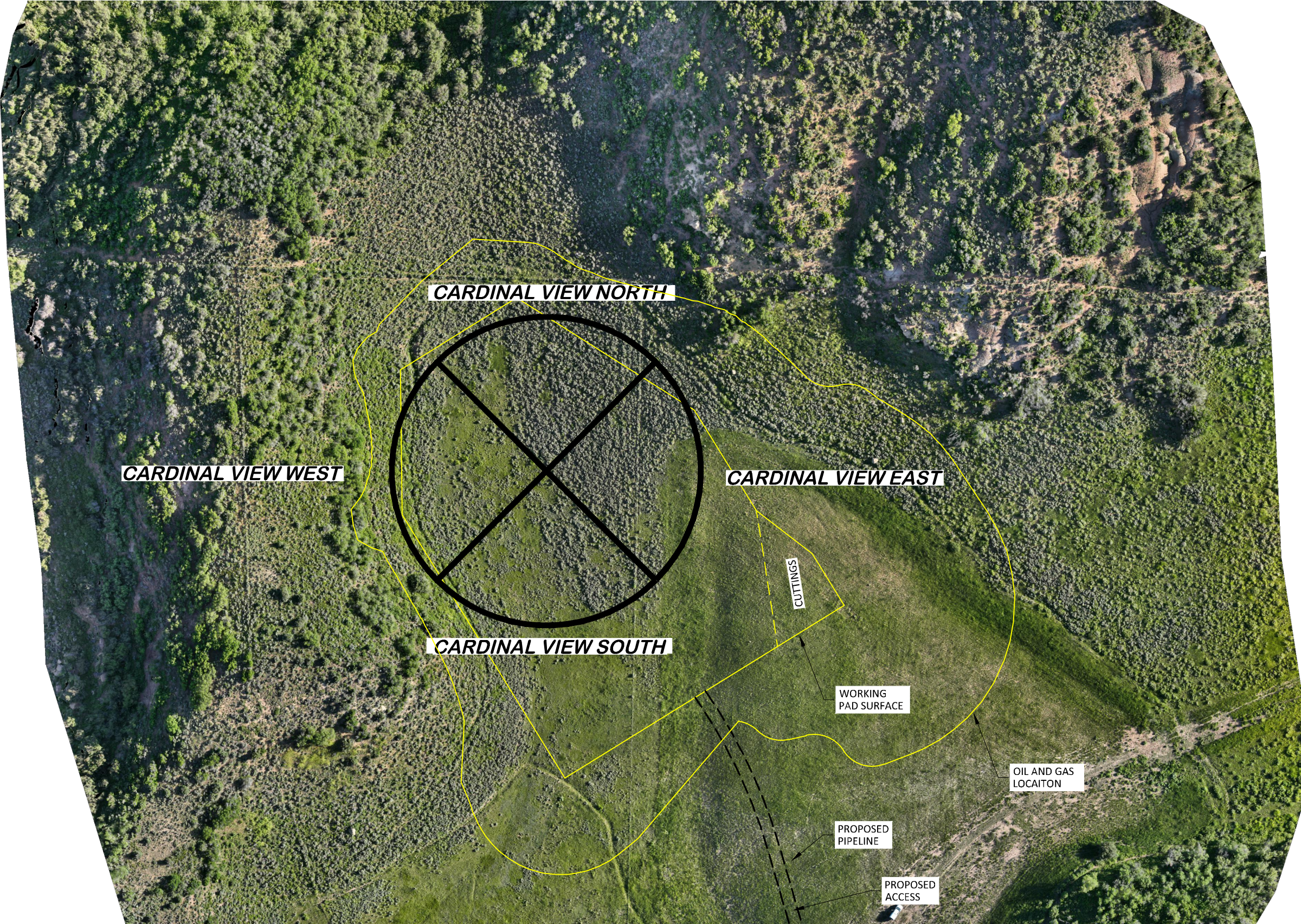
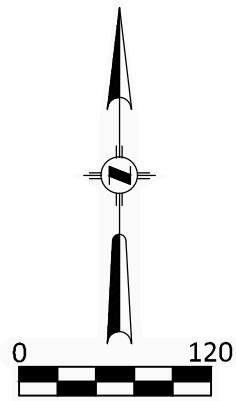


E S W
LOCATION AREA PANORAMA LOOKING SOUTH

LARAMIE 0993-29-01

LOCATION PICTURES 2 OF 4			
 <small>(307) 362-5028</small>		LARAMIE ENERGY, LLC LARAMIE 0993-29-01 NENE, SECTION 29, T. 9 S., R. 93 W., 6th P.M., MESA COUNTY, COLORADO	
		DRAWN: 8/10/2023 - DEH	SCALE: NOT TO SCALE
REVISED: 8/31/2023 - DEH		DRG JOB No. 22334	
MISC. REVISIONS		304b(4) LOC PIC (2)	


AERIAL LOCATION PHOTO



AERIAL PHOTO SOURCE
AERIAL UNMANNED AIRCRAFT PHOTOGRAMMETRY AT 150' ABOVE
GROUND LEVEL (AGL) TAKEN 6/26/2023

PAD LOCATION:
LAT: 39.254781 N
LONG: 107.784158 W

LARAMIE 0993-29-01

 <small>(307) 362-5028</small>		DRG RIFFIN & ASSOCIATES, INC. 1414 ELK ST., ROCK SPRINGS, WY 82901	
DRAWN: 8/10/2023 - DEH		SCALE: 1" = 120'	
REVISED: 9/11/2023 - DEH		DRG JOB No. 22334	
MISC. REVISIONS		304b(4) LOC PIC (3)	

LOCATION PICTURES 3 OF 4

LARAMIE ENERGY, LLC
LARAMIE 0993-29-01
NENE, SECTION 29, T.9 S., R. 93 W., 6th P.M.,
MESA COUNTY, COLORADO

