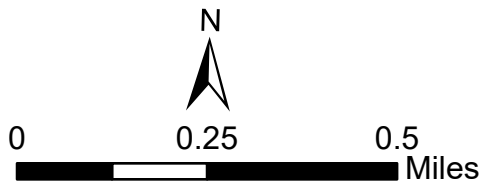


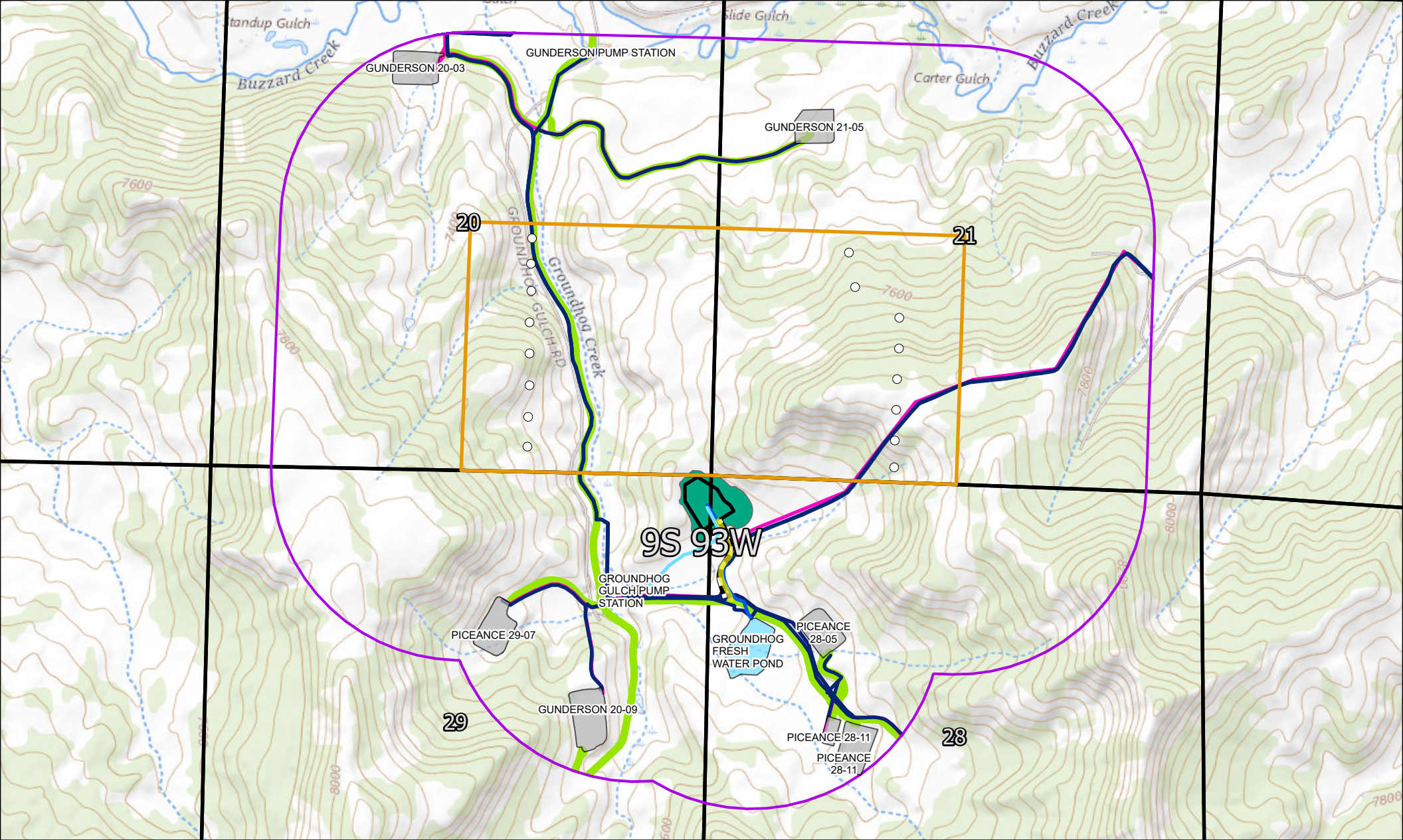
- Laramie 0993-29-01 Proposed BHL
- Existing Gas Pipeline
- Existing Water Pipeline
- Proposed Buried Gas Pipeline & Water Gathering Line
- Proposed Water Lines**
  - Temporary Dedicated Fresh Water Surface Line
  - Temporary Produced Water Surface Line
  - Proposed Access Road
- Existing Private Lease Road
- LARAMIE 0993-29-01
- LARAMIE 0993-29-01 Disturbance
- Mineral Development Area
- 2023 Laramie 0993-29-01 OGD Development 2000ft Buffer
- Facility
- Pads
- Man-made Fresh Water Source Support Pond (Operator Owned)



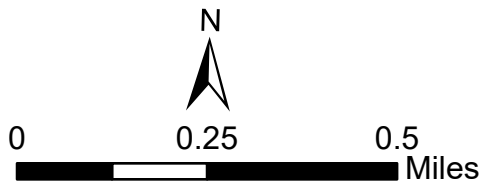
**Related Location & Flowline Map**  
 ECMC Rule 301.b.(7).G.  
 Laramie 0993-29-01  
 NENE, Sec. 29  
 T9S R93W 6th PM  
 Mesa County, CO







- Laramie 0993-29-01 Proposed BHL
- Existing Gas Pipeline
- Existing Water Pipeline
- Proposed Buried Gas Pipeline & Water Gathering Line
- Proposed Water Lines**
- Temporary Dedicated Fresh Water Surface Line
- Temporary Produced Water Surface Line
- Proposed Access Road
- Existing Private Lease Road
- LARAMIE 0993-29-01
- LARAMIE 0993-29-01 Disturbance
- Mineral Development Area
- 2023 Laramie 0993-29-01 OGD Development 2000ft Buffer
- Facility
- Pads
- Man-made Fresh Water Source Support Pond (Operator Owned)



**Related Location & Flowline Map**  
 ECOM Rule 301.b.(7).G.  
 Laramie 0993-29-01  
 NENE, Sec. 29  
 T9S R93W 6th PM  
 Mesa County, CO



**Laramie 0993-29-01 Well Pad**  
**Related Location & Flowline Map**  
**ECMC Rule 304.b.(7).G.**



Operator Number	Operator	Location ID	Location Name	General Description	Document #	Legal Description	Lat/Long
10433	Laramie Energy, LLC	334436	Piceance 29-07 Pad	Well Pad (Production)	401118116	SWNE Sec. 29, T9S, R93W	39.251017 / -107.791608
10433	Laramie Energy, LLC	334426	Gunderson 29-09 Pad	Well Pad (Production)	401139697	SENE Sec. 29, T9S, R93W	39.248406 / -107.788322
10433	Laramie Energy, LLC	438499	Piceance 28-11 Pad	Well Pad (Production)	400604661	NESW Sec. 28, T9S, R93W	39.247810 / -107.778090
10433	Laramie Energy, LLC	334427	Piceance 28-05 Pad	Well Pad (Production)	400768923	SWNW Sec. 28, T9S, R93W	39.251250 / -107.779610
10433	Laramie Energy, LLC	444154	Groundhog Gulch Pump Station	Support Facility - Water Transfer	400897675	NENE Sec. 29, T9S, R93W	39.252017 / -107.786531
10433	Laramie Energy, LLC	449070	Gunderson 20-03 Pad	Well Pad (Production)	401214673	NENW Sec. 20, T9S, R93W	39.266756 / -107.795281
10433	Laramie Energy, LLC	452797	Gunderson 0993-21-05 Pad	Well Pad (Production)	401412105	SWNW Sec. 21, T9S, R93W	39.265506 / -107.780128