

Operator: CRESTONE PEAK RESOURCES OPERATING LLC

Location Name: State Challenger 5-65 2-3 3BYH

Loc ID: 451622

Inspection: 713900625



Exhibit A

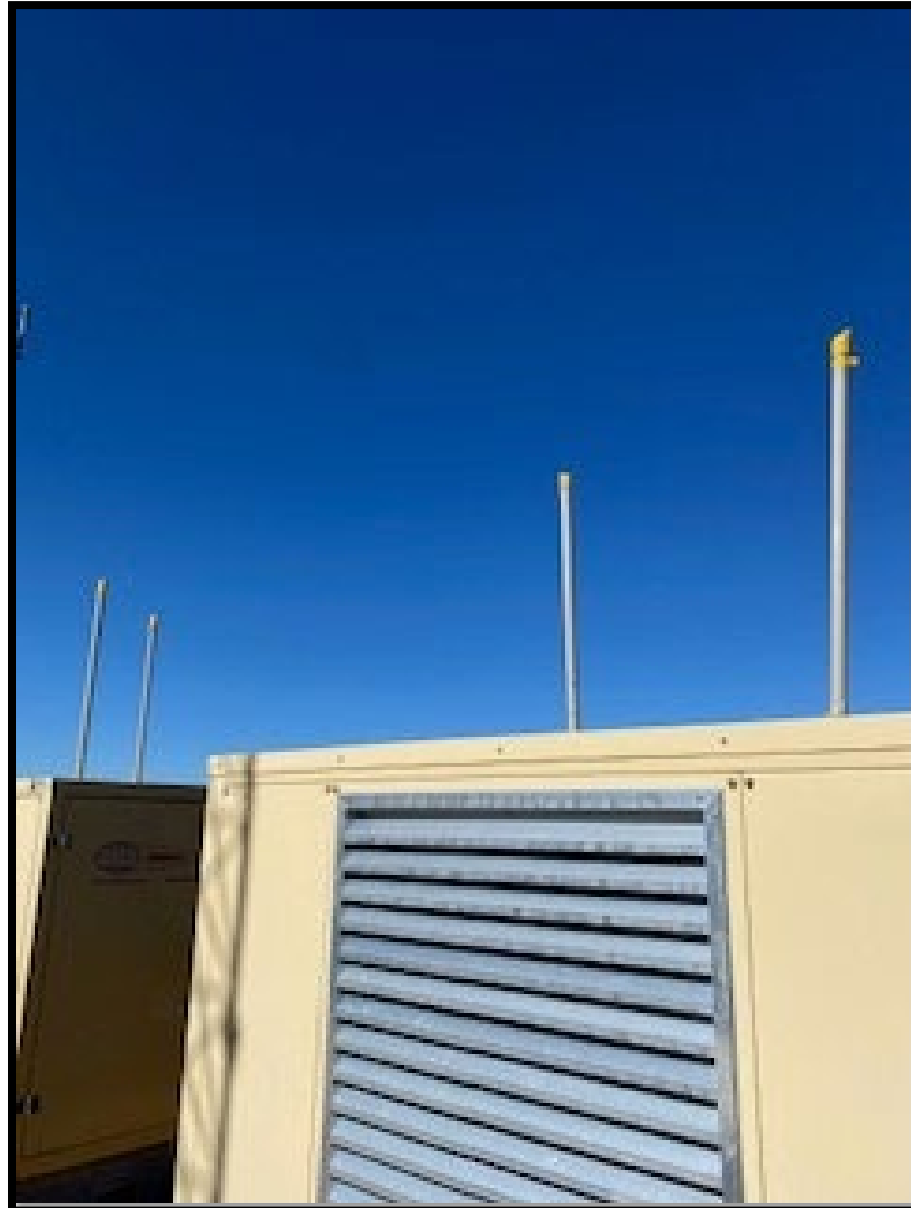


Exhibit B



Exhibit C



Exhibit D

CA: Cover on production equipment exhaust has fallen off. See inspection photos for details. Install wildlife protection equipment per Rule 608.a.

CA Resolution: Operator has reported that rain caps have been installed on all PRVs to comply with Rule 608.a.

CA: During the inspection the wellhead cellar cover was observed to be not adequately covering the cellar sufficiently to keep out wildlife and the cellar was observed to be full of water which has floated the wooden wildlife ramp that also appears to not be sufficient as a wildlife BMP. Maintain the wellhead cellar to sufficiently keep out wildlife per Rule 608.a.

CA Resolution: Operator has reported that wellhead cellar has been bottomed out and maintenance ticket has been submitted to have new wellhead grating installed to comply with Rule 608.a.



Exhibit A



Exhibit B

CA: Production sled containment was observed with a sheen as well as no freeboard during the inspection. Stained soil was also observed along the edge of the sled on the pad. Remove stained soil and clean out containment on sled per Rule 912.a.

CA Resolution: Operator has reported that the identified areas with stained soil have been appropriately cleaned and stained soil has been disposed of to comply with Rule 905.e.



Exhibit A



Exhibit B



State Challenger
24 May 2024, 1:35:52 PM

Exhibit C



Exhibit D



Exhibit E

CA: Ponding on the center and Northwest side of the production pad as well as head cuts along the ditch above the sediment trap were observed at the time of the inspection. Some of the ponding around the wellhead and other equipment may create a safety hazard for getting to equipment in the event of emergency. Refer to the inspection photos for more details. Erosion along the ditch should be repaired and low spots on the production pad should be re-graded as not pond water to comply with Rule 1002.f.

CA Resolution: Operator has reported that identified erosion along the eastern drainage ditch feeding into the sediment basin has been repaired, and additional rock check dams were installed to slow the velocity of the water flow. In addition to the repairs, a native seed mix was hand broadcasted into these areas. The Pad surface was also regraded to facilitate positive water shed towards the drainage swales. Location currently complies with Rule 1002.f.