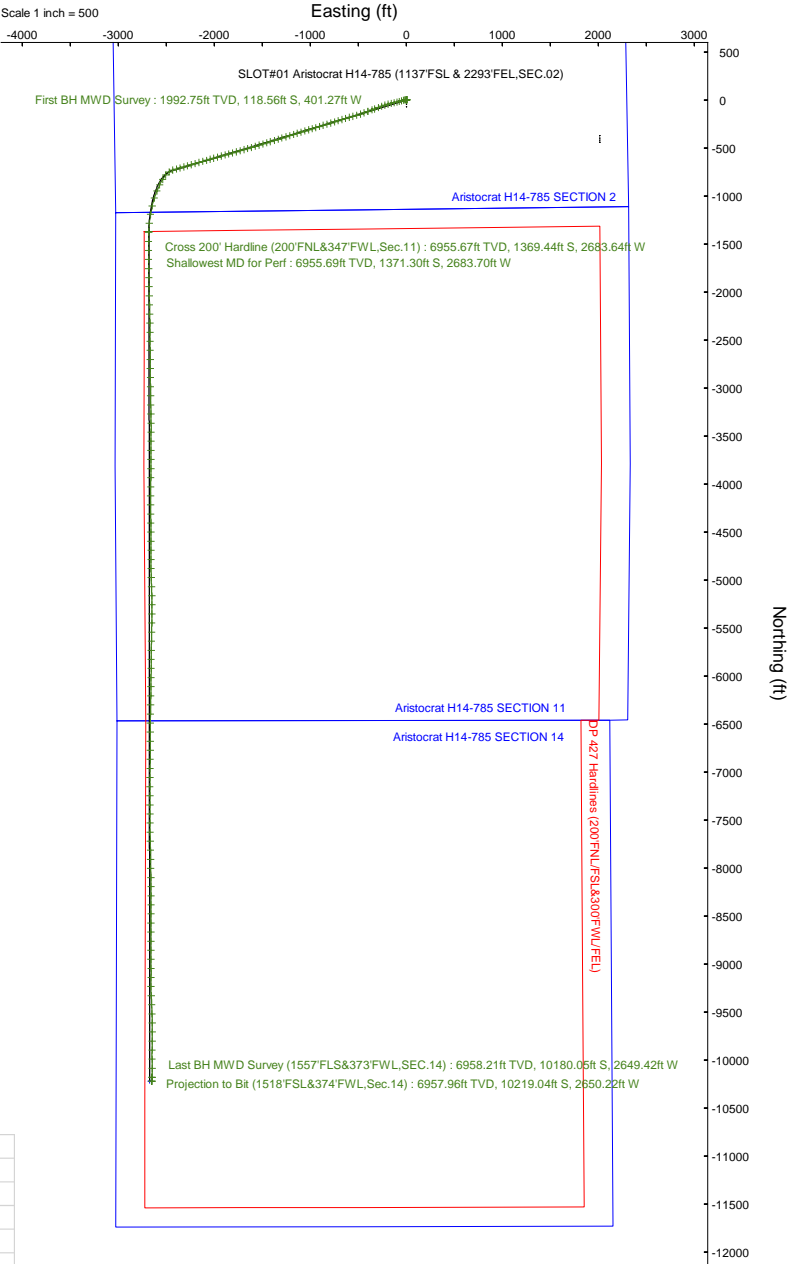
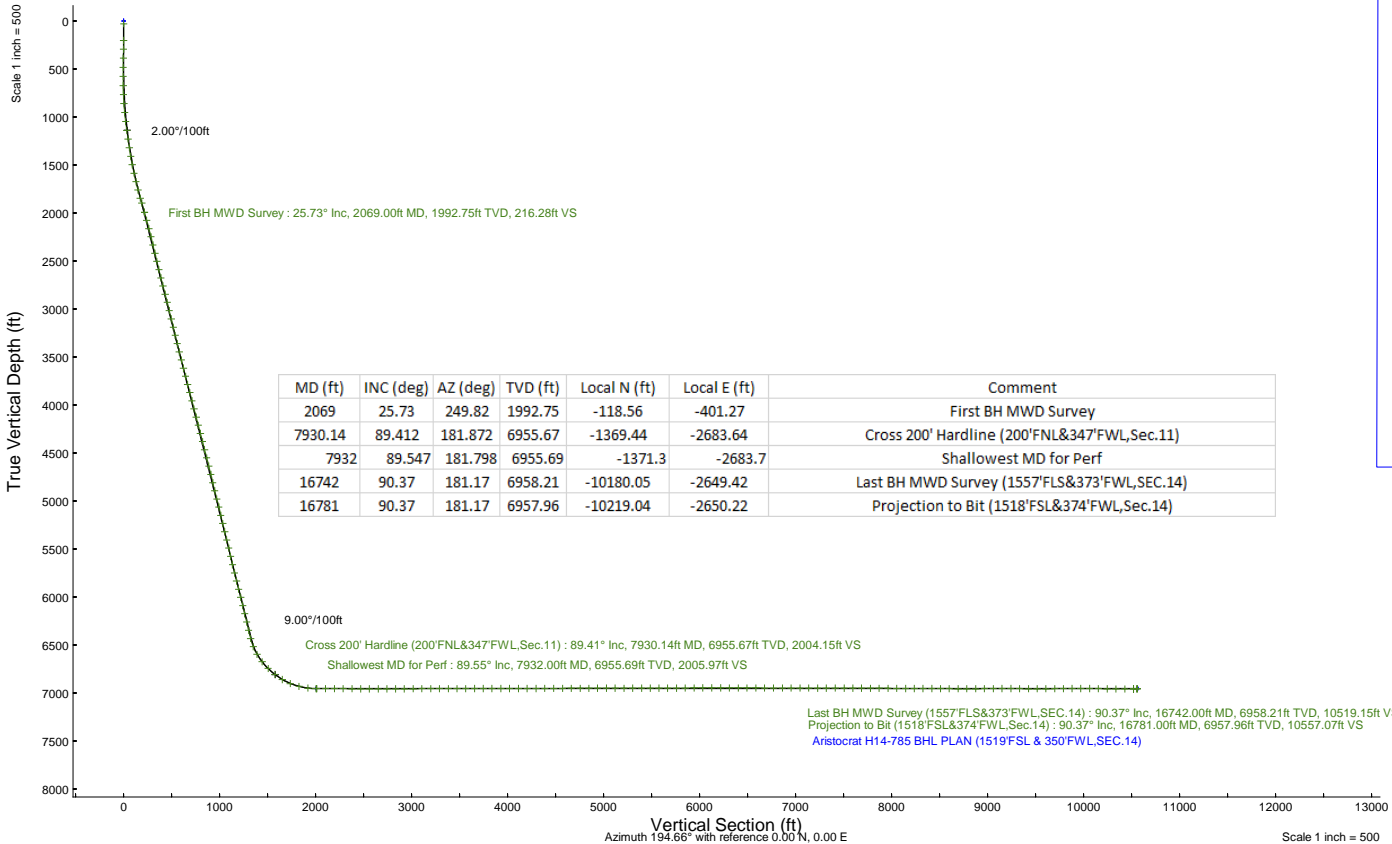


# NOBLE ENERGY, INC

Location:	COLORADO	Slot:	SLOT#01 Aristocrat H14-785 (1137FSL & 2293FEL,SEC.02)
Field:	WELD COUNTY (NOBLE NAD 83 GRID)	Well:	Aristocrat H14-785
Facility:	SEC.02-T03N-R65W	Wellbore:	Aristocrat H14-785 PWB

Plot reference wellpath is Aristocrat H14-785 (REV-C.0) PWP	Grid System: NAD83 / Lambert Colorado SP, Northern Zone (501), US feet
True vertical depths are referenced to RIG (4780'GL+30'KB@4810'RKB) (RKB)	North Reference: Grid north
Reference wellpath measured depths are referenced to RIG (4780'GL+30'KB@4810'RKB) (RKB)	Scale: True distance
RIG (4780'GL+30'KB@4810'RKB) (RKB) to Mean Sea Level: 4810 feet	Coordinates are in feet referenced to Slot
Mean Sea Level to Ground level (At Slot: SLOT#01 Aristocrat H14-785 (1137FSL & 2293FEL,SEC.02)): 0 feet	Depths are in feet
Offset wellpath MDs are referenced to each path's default MD datum	Created by: guenaler on 2024-05-29; Database: WA_Denver

Location Information						
Facility Name			Grid East (US ft)	Grid North (US ft)	Latitude	Longitude
SEC.02-T03N-R65W			3243139.604	1335198.361	40°15'0.8640"N	104°37'44.0760"W
Slot	Local N (ft)	Local E (ft)	Grid East (US ft)	Grid North (US ft)	Latitude	Longitude
SLOT#01 Aristocrat H14-785 (1137FSL & 2293FEL,SEC.02)	0.00	0.00	3243139.604	1335198.361	40°15'0.8640"N	104°37'44.0760"W
RIG (4780'GL+30'KB@4810'RKB) (RKB) to Ground level (At Slot: SLOT#01 Aristocrat H14-785 (1137FSL & 2293FEL,SEC.02))					4810ft	
Mean Sea Level to Ground level (At Slot: SLOT#01 Aristocrat H14-785 (1137FSL & 2293FEL,SEC.02))					0ft	
RIG (4780'GL+30'KB@4810'RKB) (RKB) to Mean Sea Level					4810ft	





Actual Wellpath Report  
Aristocrat H14-785 AWP  
Page 1 of 7



REFERENCE WELLPATH IDENTIFICATION			
Operator	NOBLE ENERGY, INC	Well	Aristocrat H14-785
Field	WELD COUNTY (NOBLE NAD 83 GRID)	API	05-123-49085
Facility	SEC.02-T03N-R65W	Wellbore	Aristocrat H14-785 AWB
Slot	SLOT#01 Aristocrat H14-785 (1137'FSL & 2293'FEL,SEC.02)		

REPORT SETUP INFORMATION			
Projection System	NAD83 / Lambert Colorado SP, Northern Zone (501), US feet	Software System	WellArchitect® 6.0
North Reference	Grid	User	Guenaler
Scale	0.999957	Report Generated	5/29/2024 at 8:18:33 AM
Convergence at slot	0.56° East	Database	WA_Denver

WELLPATH LOCATION						
	Local coordinates		Grid coordinates		Geographic coordinates	
	North[ft]	East[ft]	Easting[US ft]	Northing[US ft]	Latitude	Longitude
Slot Location	0.00	0.00	3243139.60	1335198.36	40.2502400°	-104.6289100°
Facility Reference Pt			3243139.60	1335198.36	40.2502400°	-104.6289100°
Field Reference Pt			3000000.00	4454105.15	48.7761986°	-105.5000000°

WELLPATH DATUM			
Calculation method	Minimum curvature	RIG (4780'GL+30'KB@4810'RKB) (RKB) to Facility Vertical Datum	4810.00ft
Horizontal Reference Pt	Slot	RIG (4780'GL+30'KB@4810'RKB) (RKB) to Mean Sea Level	4810.00ft
Vertical Reference Pt	RIG (4780'GL+30'KB@4810'RKB) (RKB)	RIG (4780'GL+30'KB@4810'RKB) (RKB) to Ground Level at Slot (SLOT#01 Aristocrat H14-785 (1137'FSL & 2293'FEL,SEC.02))	4810.00ft
MD Reference Pt	RIG (4780'GL+30'KB@4810'RKB) (RKB)	Section Origin	N 0.00, E 0.00 ft
Field Vertical Reference	Mean Sea Level	Section Azimuth	194.66°



Actual Wellpath Report  
Aristocrat H14-785 AWP  
Page 2 of 7



REFERENCE WELLPATH IDENTIFICATION			
Operator	NOBLE ENERGY, INC	Well	Aristocrat H14-785
Field	WELD COUNTY (NOBLE NAD 83 GRID)	API	05-123-49085
Facility	SEC.02-T03N-R65W	Wellbore	Aristocrat H14-785 AWB
Slot	SLOT#01 Aristocrat H14-785 (1137'FSL & 2293'FEL,SEC.02)		

WELLPATH DATA (181 stations) † = interpolated, ‡ = extrapolated station										
MD [ft]	Inclination [°]	Azimuth [°]	TVD [ft]	Vert Sect [ft]	North [ft]	East [ft]	Latitude	Longitude	DLS [°/100ft]	Comments
0.00†	0.000	41.940	0.00	0.00	0.00	0.00	40.2502400	-104.6289100	0.00	
30.00	0.000	41.940	30.00	0.00	0.00	0.00	40.2502400	-104.6289100	0.00	
204.00	0.790	41.940	203.99	-1.07	0.89	0.80	40.2502424	-104.6289071	0.45	
294.00	0.880	51.440	293.98	-2.17	1.78	1.76	40.2502449	-104.6289036	0.18	
389.00	1.140	45.460	388.97	-3.57	2.90	3.00	40.2502479	-104.6288991	0.29	
484.00	1.320	54.600	483.95	-5.22	4.20	4.57	40.2502514	-104.6288935	0.28	
579.00	0.970	273.620	578.94	-5.90	4.88	4.66	40.2502533	-104.6288931	2.28	
673.00	2.730	265.540	672.89	-5.02	4.76	1.63	40.2502530	-104.6289040	1.89	
768.00	5.800	257.980	767.61	-2.12	3.58	-5.32	40.2502500	-104.6289289	3.28	
863.00	7.910	260.270	861.93	2.74	1.48	-16.46	40.2502445	-104.6289689	2.24	
957.00	10.550	253.940	954.71	9.80	-2.00	-31.11	40.2502354	-104.6290215	3.00	
1052.00	13.540	252.710	1047.60	20.14	-7.71	-50.09	40.2502202	-104.6290897	3.16	
1147.00	15.740	255.340	1139.52	32.33	-14.27	-73.18	40.2502028	-104.6291726	2.42	
1241.00	17.320	256.570	1229.63	45.17	-20.75	-99.12	40.2501857	-104.6292658	1.72	
1336.00	18.910	257.630	1319.92	58.82	-27.33	-127.92	40.2501684	-104.6293692	1.71	
1431.00	19.790	256.750	1409.55	73.35	-34.32	-158.61	40.2501501	-104.6294794	0.98	
1525.00	21.100	254.640	1497.63	89.27	-42.45	-190.41	40.2501286	-104.6295936	1.60	
1620.00	21.630	251.480	1586.10	107.40	-52.54	-223.51	40.2501018	-104.6297125	1.33	
1715.00	22.690	249.890	1674.08	127.44	-64.40	-257.32	40.2500702	-104.6298340	1.28	
1809.00	24.090	249.190	1760.36	148.91	-77.45	-292.27	40.2500353	-104.6299597	1.52	
1904.00	27.080	248.660	1846.03	172.88	-92.21	-330.55	40.2499958	-104.6300974	3.16	
1963.00	28.230	249.720	1898.29	188.77	-101.93	-356.15	40.2499698	-104.6301894	2.12	
2069.00	25.730	249.820	1992.75	216.28	-118.56	-401.27	40.2499254	-104.6303516	2.36	First BH MWD Survey
2163.00	25.690	250.980	2077.44	239.23	-132.24	-439.68	40.2498889	-104.6304897	0.54	
2258.00	25.850	250.740	2162.99	262.21	-145.79	-478.70	40.2498527	-104.6306300	0.20	
2353.00	25.390	253.960	2248.66	284.17	-158.25	-517.83	40.2498196	-104.6307706	1.54	
2447.00	25.100	254.150	2333.68	304.58	-169.26	-556.37	40.2497904	-104.6309090	0.32	
2542.00	24.620	253.750	2419.88	324.98	-180.30	-594.76	40.2497611	-104.6310469	0.54	
2636.00	25.390	252.870	2505.07	345.66	-191.71	-632.81	40.2497308	-104.6311836	0.91	
2731.00	24.230	253.750	2591.30	366.40	-203.17	-670.99	40.2497004	-104.6313208	1.28	
2826.00	26.100	252.850	2677.28	387.43	-214.79	-709.68	40.2496696	-104.6314598	2.01	
2920.00	26.100	252.470	2761.69	409.35	-227.11	-749.15	40.2496368	-104.6316016	0.18	
3015.00	26.090	252.810	2847.01	431.51	-239.58	-789.04	40.2496036	-104.6317450	0.16	
3110.00	26.190	254.060	2932.29	453.21	-251.51	-829.15	40.2495720	-104.6318891	0.59	
3204.00	23.630	251.600	3017.54	474.05	-263.16	-866.98	40.2495410	-104.6320250	2.94	
3299.00	25.980	252.720	3103.77	495.45	-275.35	-904.92	40.2495086	-104.6321613	2.52	
3394.00	24.740	253.390	3189.62	516.78	-287.21	-943.84	40.2494770	-104.6323012	1.34	
3488.00	24.010	253.490	3275.24	536.89	-298.27	-981.03	40.2494477	-104.6324348	0.78	
3583.00	25.550	252.660	3361.49	557.75	-309.87	-1019.11	40.2494169	-104.6325716	1.66	
3678.00	25.490	252.790	3447.22	579.40	-322.02	-1058.20	40.2493846	-104.6327120	0.09	
3772.00	25.470	252.840	3532.08	600.74	-333.97	-1096.83	40.2493528	-104.6328509	0.03	
3867.00	25.750	252.970	3617.74	622.35	-346.04	-1136.08	40.2493207	-104.6329919	0.30	
3961.00	26.110	252.890	3702.28	643.97	-358.11	-1175.37	40.2492887	-104.6331331	0.38	
4056.00	26.370	253.060	3787.49	666.03	-370.41	-1215.53	40.2492560	-104.6332774	0.28	
4151.00	26.430	252.630	3872.58	688.30	-382.86	-1255.89	40.2492229	-104.6334224	0.21	



Actual Wellpath Report  
Aristocrat H14-785 AWP  
Page 3 of 7



REFERENCE WELLPATH IDENTIFICATION			
Operator	NOBLE ENERGY, INC	Well	Aristocrat H14-785
Field	WELD COUNTY (NOBLE NAD 83 GRID)	API	05-123-49085
Facility	SEC.02-T03N-R65W	Wellbore	Aristocrat H14-785 AWB
Slot	SLOT#01 Aristocrat H14-785 (1137'FSL & 2293'FEL,SEC.02)		

WELLPATH DATA (181 stations) † = interpolated, ‡ = extrapolated station										
MD [ft]	Inclination [°]	Azimuth [°]	TVD [ft]	Vert Sect [ft]	North [ft]	East [ft]	Latitude	Longitude	DLS [°/100ft]	Comments
4246.00	26.400	252.580	3957.66	710.74	-395.50	-1296.22	40.2491893	-104.6335673	0.04	
4340.00	26.210	252.740	4041.93	732.81	-407.91	-1335.99	40.2491563	-104.6337102	0.22	
4435.00	26.130	252.790	4127.19	754.95	-420.33	-1376.00	40.2491233	-104.6338539	0.09	
4530.00	26.300	252.820	4212.42	777.10	-432.74	-1416.09	40.2490903	-104.6339980	0.18	
4624.00	26.000	252.830	4296.80	798.96	-444.97	-1455.67	40.2490578	-104.6341402	0.32	
4719.00	25.860	252.790	4382.23	820.88	-457.25	-1495.36	40.2490251	-104.6342828	0.15	
4814.00	26.150	252.930	4467.62	842.83	-469.52	-1535.16	40.2489925	-104.6344258	0.31	
4908.00	26.370	252.760	4551.92	864.76	-481.79	-1574.90	40.2489599	-104.6345686	0.25	
5003.00	26.040	253.850	4637.15	886.59	-493.84	-1615.08	40.2489279	-104.6347129	0.61	
5098.00	24.480	254.040	4723.06	907.30	-505.05	-1654.04	40.2488982	-104.6348529	1.64	
5193.00	24.740	253.960	4809.44	927.47	-515.96	-1692.07	40.2488692	-104.6349895	0.28	
5287.00	26.130	253.810	4894.32	948.13	-527.17	-1730.85	40.2488395	-104.6351288	1.48	
5382.00	26.400	253.620	4979.51	969.75	-538.95	-1771.20	40.2488082	-104.6352738	0.30	
5477.00	26.060	253.700	5064.73	991.38	-550.77	-1811.49	40.2487769	-104.6354185	0.36	
5571.00	24.550	255.820	5149.71	1011.42	-561.35	-1850.25	40.2487489	-104.6355577	1.87	
5666.00	25.840	253.950	5235.67	1031.52	-571.91	-1889.28	40.2487210	-104.6356979	1.60	
5761.00	25.490	253.750	5321.30	1052.60	-583.35	-1928.80	40.2486906	-104.6358399	0.38	
5855.00	25.840	253.910	5406.03	1073.46	-594.69	-1967.90	40.2486605	-104.6359804	0.38	
5950.00	24.020	253.970	5492.17	1093.92	-605.77	-2006.38	40.2486311	-104.6361186	1.92	
6045.00	23.610	254.120	5579.08	1113.46	-616.31	-2043.27	40.2486032	-104.6362511	0.44	
6139.00	25.210	253.720	5664.68	1133.32	-627.07	-2080.59	40.2485746	-104.6363851	1.71	
6234.00	26.120	253.860	5750.30	1154.43	-638.56	-2120.10	40.2485442	-104.6365271	0.96	
6329.00	26.020	253.590	5835.64	1175.89	-650.26	-2160.18	40.2485131	-104.6366710	0.16	
6423.00	26.060	253.750	5920.10	1197.14	-661.86	-2199.78	40.2484823	-104.6368133	0.09	
6518.00	25.950	253.800	6005.48	1218.52	-673.50	-2239.77	40.2484515	-104.6369570	0.12	
6613.00	25.770	253.700	6090.96	1239.81	-685.10	-2279.55	40.2484207	-104.6370999	0.19	
6707.00	24.760	253.920	6175.97	1260.39	-696.28	-2318.08	40.2483910	-104.6372383	1.08	
6802.00	24.650	253.760	6262.28	1280.73	-707.33	-2356.22	40.2483617	-104.6373753	0.14	
6897.00	25.110	253.740	6348.46	1301.27	-718.52	-2394.59	40.2483320	-104.6375131	0.48	
6991.00	26.080	253.870	6433.23	1322.09	-729.84	-2433.58	40.2483020	-104.6376532	1.03	
7086.00	28.040	235.470	6517.98	1349.74	-748.34	-2472.11	40.2482523	-104.6377919	9.01	
7180.00	32.740	219.770	6599.17	1389.56	-780.47	-2506.65	40.2481650	-104.6379167	9.78	
7275.00	39.440	211.410	6675.94	1441.81	-826.04	-2538.86	40.2480407	-104.6380337	8.74	
7370.00	46.270	205.780	6745.57	1504.48	-882.79	-2569.57	40.2478858	-104.6381457	8.24	
7464.00	51.810	202.780	6807.17	1574.44	-947.49	-2598.67	40.2477090	-104.6382521	6.37	
7559.00	59.140	198.230	6861.00	1652.23	-1020.77	-2625.92	40.2475086	-104.6383523	8.66	
7653.00	67.980	192.580	6902.84	1736.26	-1101.83	-2648.09	40.2472867	-104.6384346	10.83	
7748.00	75.660	190.040	6932.46	1826.29	-1190.27	-2665.74	40.2470444	-104.6385009	8.47	
7843.00	83.090	185.350	6949.97	1918.87	-1282.71	-2678.18	40.2467910	-104.6385486	9.20	
7930.14†	89.412	181.872	6955.67	2004.15	-1369.44	-2683.64	40.2465531	-104.6385712	8.28	Cross 200' Hardline (200'FNL&347'FWL,Sec.11)
7932.00†	89.547	181.798	6955.69	2005.97	-1371.30	-2683.70	40.2465480	-104.6385715	8.28	Shallowest MD for Perf
7937.00	89.910	181.600	6955.71	2010.84	-1376.29	-2683.85	40.2465343	-104.6385722	8.28	
8032.00	90.000	180.440	6955.79	2103.16	-1471.28	-2685.54	40.2462736	-104.6385816	1.22	
8127.00	89.910	179.730	6955.86	2195.10	-1566.28	-2685.68	40.2460128	-104.6385854	0.75	
8221.00	90.030	180.130	6955.91	2286.01	-1660.27	-2685.57	40.2457548	-104.6385883	0.44	



Actual Wellpath Report  
Aristocrat H14-785 AWP  
Page 4 of 7



REFERENCE WELLPATH IDENTIFICATION			
Operator	NOBLE ENERGY, INC	Well	Aristocrat H14-785
Field	WELD COUNTY (NOBLE NAD 83 GRID)	API	05-123-49085
Facility	SEC.02-T03N-R65W	Wellbore	Aristocrat H14-785 AWB
Slot	SLOT#01 Aristocrat H14-785 (1137'FSL & 2293'FEL,SEC.02)		

WELLPATH DATA (181 stations)										
MD [ft]	Inclination [°]	Azimuth [°]	TVD [ft]	Vert Sect [ft]	North [ft]	East [ft]	Latitude	Longitude	DLS [°/100ft]	Comments
8316.00	89.140	178.350	6956.60	2377.58	-1755.26	-2684.31	40.2454941	-104.6385870	2.09	
8411.00	89.910	179.060	6957.39	2468.91	-1850.23	-2682.16	40.2452333	-104.6385827	1.10	
8505.00	89.940	178.900	6957.51	2559.42	-1944.22	-2680.49	40.2449753	-104.6385799	0.17	
8600.00	89.970	178.270	6957.58	2650.70	-2039.19	-2678.14	40.2447146	-104.6385748	0.66	
8695.00	90.400	178.890	6957.28	2741.98	-2134.16	-2675.79	40.2444538	-104.6385697	0.79	
8790.00	89.880	178.740	6957.04	2833.37	-2229.13	-2673.82	40.2441931	-104.6385660	0.57	
8884.00	90.220	178.360	6956.96	2923.67	-2323.10	-2671.45	40.2439351	-104.6385607	0.54	
8979.00	90.490	180.220	6956.37	3015.27	-2418.09	-2670.27	40.2436743	-104.6385598	1.98	
9074.00	90.060	179.330	6955.92	3107.08	-2513.09	-2669.90	40.2434136	-104.6385618	1.04	
9168.00	90.030	179.740	6955.84	3197.82	-2607.08	-2669.13	40.2431555	-104.6385623	0.44	
9263.00	90.000	179.280	6955.82	3289.52	-2702.08	-2668.32	40.2428948	-104.6385627	0.49	
9358.00	90.090	179.320	6955.74	3381.12	-2797.07	-2667.16	40.2426340	-104.6385619	0.10	
9452.00	90.220	179.800	6955.49	3471.88	-2891.07	-2666.44	40.2423760	-104.6385626	0.53	
9547.00	90.180	179.100	6955.16	3563.55	-2986.06	-2665.53	40.2421152	-104.6385626	0.74	
9642.00	90.220	179.370	6954.83	3655.12	-3081.06	-2664.26	40.2418544	-104.6385614	0.29	
9736.00	90.030	178.740	6954.62	3745.65	-3175.04	-2662.71	40.2415964	-104.6385591	0.70	
9831.00	89.910	179.010	6954.67	3837.07	-3270.02	-2660.84	40.2413357	-104.6385557	0.31	
9926.00	90.150	179.320	6954.62	3928.62	-3365.01	-2659.46	40.2410749	-104.6385540	0.41	
10021.00	90.060	180.630	6954.45	4020.51	-3460.01	-2659.42	40.2408141	-104.6385572	1.38	
10115.00	90.220	180.170	6954.22	4111.61	-3554.01	-2660.07	40.2405561	-104.6385628	0.52	
10210.00	90.180	180.820	6953.89	4203.72	-3649.00	-2660.89	40.2402954	-104.6385691	0.69	
10305.00	90.090	180.120	6953.66	4295.82	-3744.00	-2661.67	40.2400347	-104.6385752	0.74	
10399.00	90.030	179.460	6953.56	4386.67	-3838.00	-2661.33	40.2397767	-104.6385772	0.71	
10494.00	90.340	181.350	6953.26	4478.74	-3932.99	-2662.00	40.2395159	-104.6385829	2.02	
10589.00	90.310	180.100	6952.72	4570.94	-4027.98	-2663.20	40.2392552	-104.6385905	1.32	
10683.00	90.060	180.560	6952.42	4662.01	-4121.98	-2663.74	40.2389972	-104.6385957	0.56	
10778.00	90.310	179.680	6952.11	4753.97	-4216.98	-2663.94	40.2387365	-104.6385997	0.96	
10873.00	90.090	179.520	6951.78	4845.70	-4311.97	-2663.28	40.2384757	-104.6386007	0.29	
10967.00	90.250	178.970	6951.50	4936.32	-4405.96	-2662.04	40.2382177	-104.6385995	0.61	
11062.00	89.880	179.350	6951.39	5027.86	-4500.95	-2660.65	40.2379569	-104.6385978	0.56	
11157.00	89.820	180.280	6951.64	5119.69	-4595.95	-2660.34	40.2376962	-104.6386000	0.98	
11251.00	90.060	179.590	6951.74	5210.60	-4689.95	-2660.23	40.2374382	-104.6386029	0.78	
11346.00	90.370	179.850	6951.38	5302.39	-4784.95	-2659.77	40.2371774	-104.6386046	0.43	
11441.00	89.880	179.900	6951.17	5394.24	-4879.95	-2659.56	40.2369166	-104.6386071	0.52	
11535.00	90.090	178.150	6951.20	5484.75	-4973.93	-2657.96	40.2366586	-104.6386047	1.88	
11630.00	90.030	178.290	6951.10	5575.87	-5068.88	-2655.01	40.2363979	-104.6385974	0.16	
11725.00	89.690	177.710	6951.33	5666.88	-5163.83	-2651.70	40.2361372	-104.6385888	0.71	
11819.00	90.650	179.970	6951.05	5757.31	-5257.80	-2649.79	40.2358792	-104.6385853	2.61	
11914.00	90.770	181.250	6949.87	5849.46	-5352.78	-2650.80	40.2356185	-104.6385922	1.35	
12009.00	90.830	180.660	6948.55	5941.74	-5447.76	-2652.39	40.2353579	-104.6386012	0.62	
12103.00	89.780	180.650	6948.05	6032.94	-5541.75	-2653.46	40.2350999	-104.6386083	1.12	
12198.00	90.180	181.840	6948.08	6125.35	-5636.73	-2655.53	40.2348393	-104.6386190	1.32	
12293.00	89.750	180.790	6948.14	6217.78	-5731.70	-2657.71	40.2345786	-104.6386301	1.19	
12388.00	89.910	180.200	6948.42	6309.89	-5826.70	-2658.53	40.2343179	-104.6386364	0.64	
12482.00	89.850	180.240	6948.62	6400.92	-5920.70	-2658.89	40.2340599	-104.6386409	0.08	





Actual Wellpath Report  
Aristocrat H14-785 AWP  
Page 5 of 7



REFERENCE WELLPATH IDENTIFICATION			
Operator	NOBLE ENERGY, INC	Well	Aristocrat H14-785
Field	WELD COUNTY (NOBLE NAD 83 GRID)	API	05-123-49085
Facility	SEC.02-T03N-R65W	Wellbore	Aristocrat H14-785 AWB
Slot	SLOT#01 Aristocrat H14-785 (1137'FSL & 2293'FEL,SEC.02)		

WELLPATH DATA (181 stations)										
MD [ft]	Inclination [°]	Azimuth [°]	TVD [ft]	Vert Sect [ft]	North [ft]	East [ft]	Latitude	Longitude	DLS [°/100ft]	Comments
12577.00	90.060	181.400	6948.69	6493.16	-6015.69	-2660.25	40.2337992	-104.6386491	1.24	
12672.00	89.690	180.220	6948.90	6585.39	-6110.67	-2661.59	40.2335385	-104.6386572	1.30	
12766.00	89.540	180.850	6949.53	6676.55	-6204.67	-2662.47	40.2332806	-104.6386636	0.69	
12861.00	90.000	180.790	6949.91	6768.79	-6299.66	-2663.83	40.2330199	-104.6386718	0.49	
12956.00	90.090	181.530	6949.84	6861.16	-6394.64	-2665.75	40.2327592	-104.6386820	0.78	
13050.00	89.850	181.260	6949.89	6952.65	-6488.61	-2668.04	40.2325013	-104.6386935	0.38	
13145.00	89.940	179.110	6950.06	7044.63	-6583.60	-2668.35	40.2322406	-104.6386979	2.27	
13240.00	89.910	180.230	6950.19	7136.39	-6678.60	-2667.80	40.2319798	-104.6386992	1.18	
13334.00	89.940	180.380	6950.31	7227.46	-6772.60	-2668.30	40.2317218	-104.6387043	0.16	
13429.00	90.120	180.330	6950.26	7319.51	-6867.60	-2668.89	40.2314611	-104.6387097	0.20	
13524.00	89.910	180.950	6950.23	7411.68	-6962.59	-2669.95	40.2312004	-104.6387168	0.69	
13619.00	89.850	181.040	6950.43	7503.99	-7057.57	-2671.60	40.2309397	-104.6387260	0.11	
13713.00	89.690	179.690	6950.81	7595.07	-7151.57	-2672.20	40.2306817	-104.6387314	1.45	
13808.00	89.750	179.390	6951.27	7686.78	-7246.57	-2671.44	40.2304209	-104.6387320	0.32	
13903.00	89.660	179.390	6951.76	7778.43	-7341.56	-2670.42	40.2301602	-104.6387317	0.09	
13997.00	89.880	180.130	6952.14	7869.26	-7435.56	-2670.03	40.2299021	-104.6387335	0.82	
14092.00	89.570	179.670	6952.60	7961.13	-7530.55	-2669.86	40.2296414	-104.6387362	0.58	
14187.00	89.570	179.910	6953.31	8052.94	-7625.55	-2669.52	40.2293806	-104.6387383	0.25	
14282.00	89.630	178.250	6953.97	8144.44	-7720.53	-2667.99	40.2291199	-104.6387361	1.75	
14376.00	89.880	179.170	6954.38	8234.82	-7814.51	-2665.87	40.2288619	-104.6387318	1.01	
14471.00	89.940	179.670	6954.52	8326.48	-7909.50	-2664.91	40.2286011	-104.6387317	0.53	
14566.00	89.780	178.770	6954.76	8418.05	-8004.49	-2663.62	40.2283403	-104.6387304	0.96	
14660.00	89.660	178.690	6955.22	8508.44	-8098.47	-2661.54	40.2280823	-104.6387262	0.15	
14755.00	89.630	179.230	6955.80	8599.89	-8193.45	-2659.81	40.2278216	-104.6387233	0.57	
14850.00	89.880	180.220	6956.21	8691.68	-8288.45	-2659.36	40.2275608	-104.6387250	1.07	
14944.00	90.090	180.330	6956.24	8782.73	-8382.45	-2659.81	40.2273028	-104.6387299	0.25	
15039.00	90.090	180.100	6956.09	8874.72	-8477.44	-2660.16	40.2270421	-104.6387344	0.24	
15134.00	90.150	180.190	6955.89	8966.69	-8572.44	-2660.40	40.2267813	-104.6387386	0.11	
15228.00	90.550	180.160	6955.31	9057.70	-8666.44	-2660.69	40.2265233	-104.6387429	0.43	
15323.00	90.250	180.140	6954.65	9149.66	-8761.44	-2660.94	40.2262626	-104.6387471	0.32	
15417.00	89.510	180.100	6954.85	9240.65	-8855.44	-2661.14	40.2260045	-104.6387511	0.79	
15512.00	89.380	179.670	6955.77	9332.50	-8950.43	-2660.95	40.2257438	-104.6387537	0.47	
15607.00	89.450	178.830	6956.74	9424.08	-9045.42	-2659.70	40.2254830	-104.6387525	0.89	
15701.00	90.430	181.010	6956.84	9514.98	-9139.41	-2659.57	40.2252250	-104.6387553	2.54	
15796.00	90.280	180.110	6956.25	9607.11	-9234.40	-2660.50	40.2249643	-104.6387620	0.96	
15891.00	90.090	176.790	6955.94	9698.32	-9329.36	-2657.93	40.2247036	-104.6387561	3.50	
15985.00	90.920	177.530	6955.11	9787.97	-9423.24	-2653.27	40.2244458	-104.6387427	1.18	
16080.00	90.000	177.970	6954.35	9878.85	-9518.16	-2649.54	40.2241852	-104.6387326	1.07	
16174.00	89.970	179.350	6954.37	9969.21	-9612.13	-2647.35	40.2239272	-104.6387280	1.47	
16269.00	89.230	179.500	6955.04	10060.87	-9707.12	-2646.39	40.2236664	-104.6387279	0.79	
16364.00	89.970	181.550	6955.70	10152.98	-9802.11	-2647.26	40.2234057	-104.6387343	2.29	
16458.00	88.280	180.790	6957.14	10244.37	-9896.08	-2649.18	40.2231478	-104.6387445	1.97	
16553.00	89.910	179.090	6958.64	10336.23	-9991.06	-2649.08	40.2228871	-104.6387474	2.48	
16648.00	90.120	180.080	6958.61	10427.96	-10086.05	-2648.39	40.2226263	-104.6387482	1.07	
16742.00	90.370	181.170	6958.21	10519.15	-10180.05	-2649.42	40.2223684	-104.6387552	1.19	Last BH MWD Survey (1557'FSL&373'FWL,SEC.14)



Actual Wellpath Report

Aristocrat H14-785 AWP

Page 6 of 7



REFERENCE WELLPATH IDENTIFICATION			
Operator	NOBLE ENERGY, INC	Well	Aristocrat H14-785
Field	WELD COUNTY (NOBLE NAD 83 GRID)	API	05-123-49085
Facility	SEC.02-T03N-R65W	Wellbore	Aristocrat H14-785 AWB
Slot	SLOT#01 Aristocrat H14-785 (1137'FSL & 2293'FEL,SEC.02)		

WELLPATH DATA (181 stations) † = interpolated, ‡ = extrapolated station										
MD [ft]	Inclination [°]	Azimuth [°]	TVD [ft]	Vert Sect [ft]	North [ft]	East [ft]	Latitude	Longitude	DLS [°/100ft]	Comments
16781.00‡	90.370	181.170	6957.96	10557.07	-10219.04	-2650.22	40.2222614	-104.6387594	0.00	Projection to Bit (1518'FSL&374'FWL,Sec.14)

TARGETS								
Name	TVD [ft]	North [ft]	East [ft]	Grid East [US ft]	Grid North [US ft]	Latitude	Longitude	Shape
Aristocrat H14-785 SECTION 11	0.00	0.00	0.00	3243139.60	1335198.36	40.2502400	-104.6289100	polygon
	2D Polygon: dimensions not calculated							
Aristocrat H14-785 SECTION 14	0.00	0.00	0.00	3243139.60	1335198.36	40.2502400	-104.6289100	polygon
	2D Polygon: dimensions not calculated							
Aristocrat H14-785 SECTION 2	0.00	0.00	0.00	3243139.60	1335198.36	40.2502400	-104.6289100	polygon
	2D Polygon: dimensions not calculated							
Aristocrat H14-785 BHL PLAN (1519'FSL & 350'FWL,SEC.14)	6954.00	-10220.31	-2674.19	3240465.54	1324978.51	40.2222585	-104.6388453	point
Aristocrat H14-785 LP PLAN (200'FNL & 350'FWL,SEC.11)	6954.00	-1369.44	-2680.83	3240458.90	1333828.98	40.2465530	-104.6385612	point
DP 427 Hardlines (200'FNL/FSL&300'FWL/FEL)	7301.00	0.00	0.00	3243139.60	1335198.36	40.2502400	-104.6289100	polygon
	2D Polygon: dimensions not calculated							

WELLPATH COMPOSITION - Ref Wellbore: Aristocrat H14-785 AWB    Ref Wellpath: Aristocrat H14-785 AWP					
Start MD [ft]	End MD [ft]	Positional Uncertainty Model	Log Name/Comment	Wellbore	Survey Date
30.00	1963.00	OWSG MWD rev2 - Standard	13.5" Ensign Surface OWSG MWD rev2 - Standard	Aristocrat H14-785 AWB	5/26/2024
1963.00	16781.00	OWSG MWD rev2 (MS+IFR1)	8.5" ATC OWSG MWD rev2 (MS+IFR1) <2069'-16742'>	Aristocrat H14-785 AWB	5/26/2024



Actual Wellpath Report  
Aristocrat H14-785 AWP  
Page 7 of 7



REFERENCE WELLPATH IDENTIFICATION			
Operator	NOBLE ENERGY, INC	Well	Aristocrat H14-785
Field	WELD COUNTY (NOBLE NAD 83 GRID)	API	05-123-49085
Facility	SEC.02-T03N-R65W	Wellbore	Aristocrat H14-785 AWB
Slot	SLOT#01 Aristocrat H14-785 (1137'FSL & 2293'FEL,SEC.02)		

WELLPATH COMMENTS				
MD [ft]	Inclination [°]	Azimuth [°]	TVD [ft]	Comment
2069.00	25.730	249.820	1992.75	First BH MWD Survey
7930.14	89.412	181.872	6955.67	Cross 200' Hardline (200'FNL&347'FWL,Sec.11)
7932.00	89.547	181.798	6955.69	Shallowest MD for Perf
16742.00	90.370	181.170	6958.21	Last BH MWD Survey (1557'FLS&373'FWL,SEC.14)
16781.00	90.370	181.170	6957.96	Projection to Bit (1518'FSL&374'FWL,Sec.14)