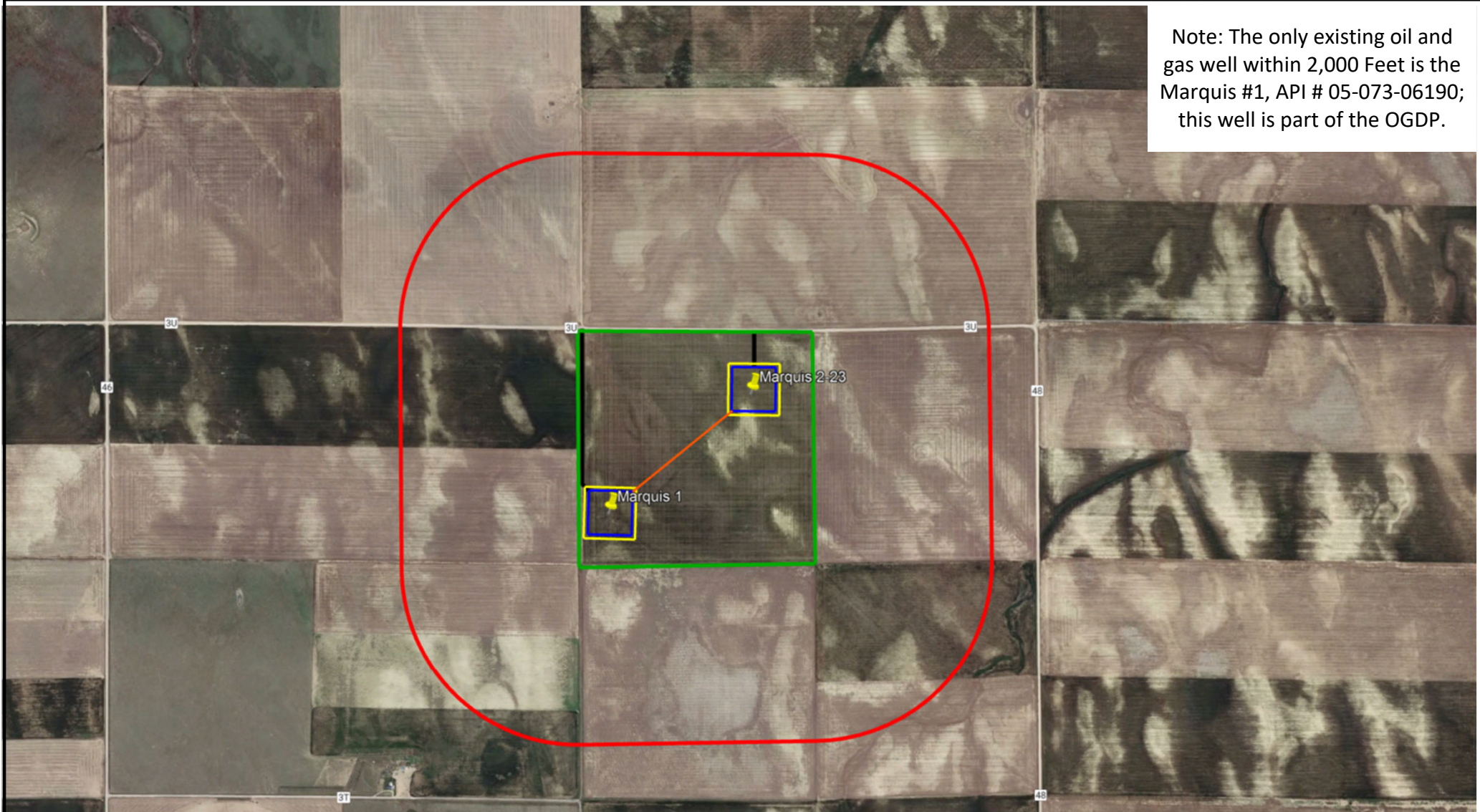


Note: The only existing oil and gas well within 2,000 Feet is the Marquis #1, API # 05-073-06190; this well is part of the OGDG.



Marquis OGDG  
Great Plains Energy Operating, LLC  
Section 23, T7S R52W  
Related Location and Flowline Map

**Legend**

-  Working Pad Surface
-  Oil and Gas Location
-  Proposed Access Road
-  Off-Location Flowline
-  OGDG Boundary & Proposed Mineral Development Area
-  2,000' Buffer



Prepared By:  
Ardor Environmental LLC

February 16, 2024